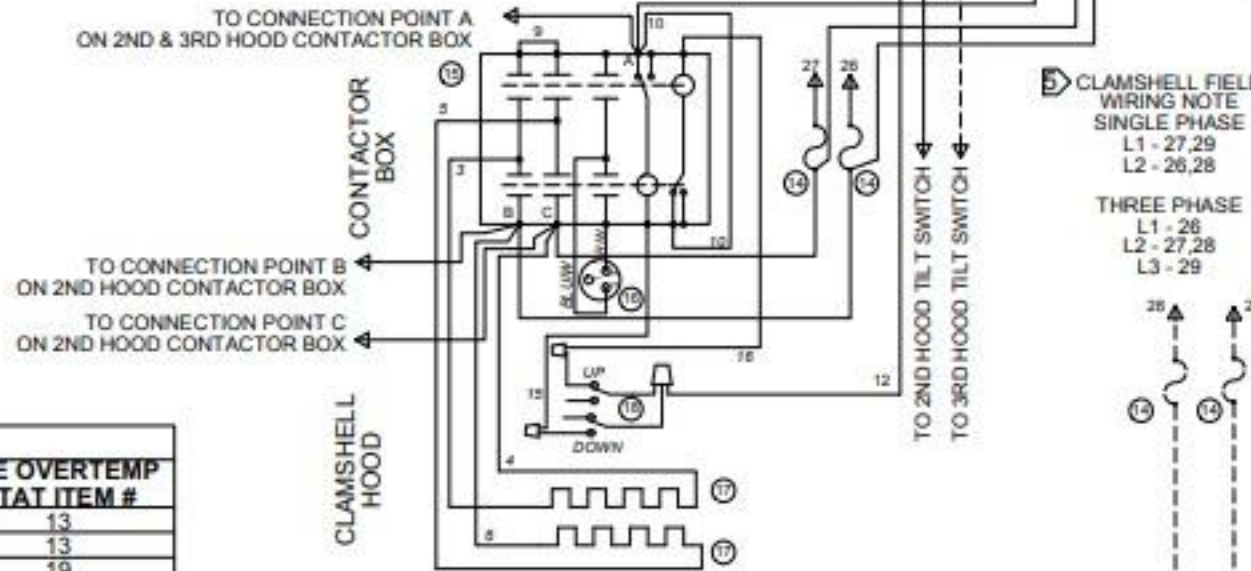
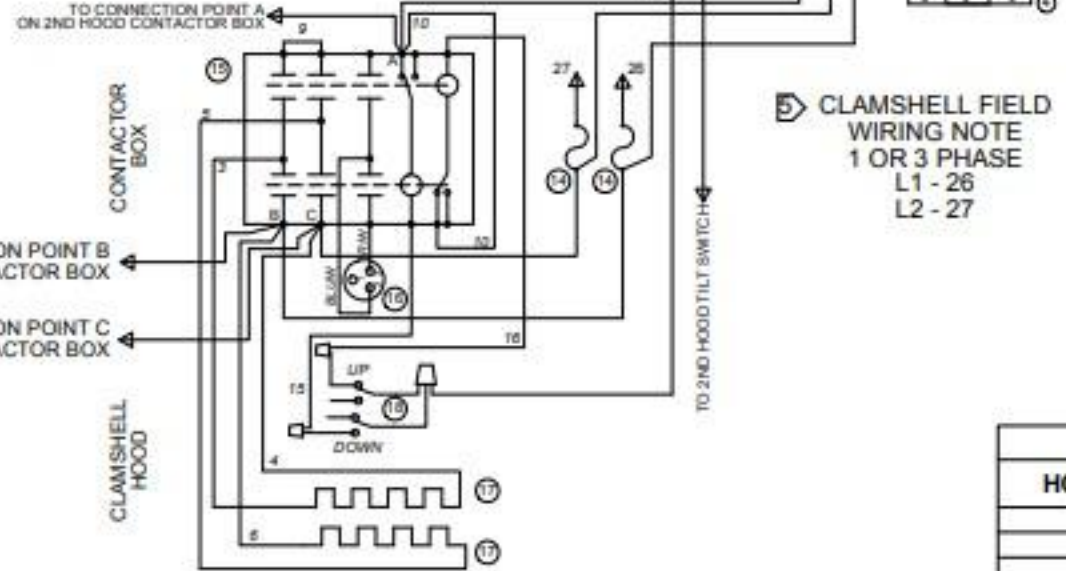
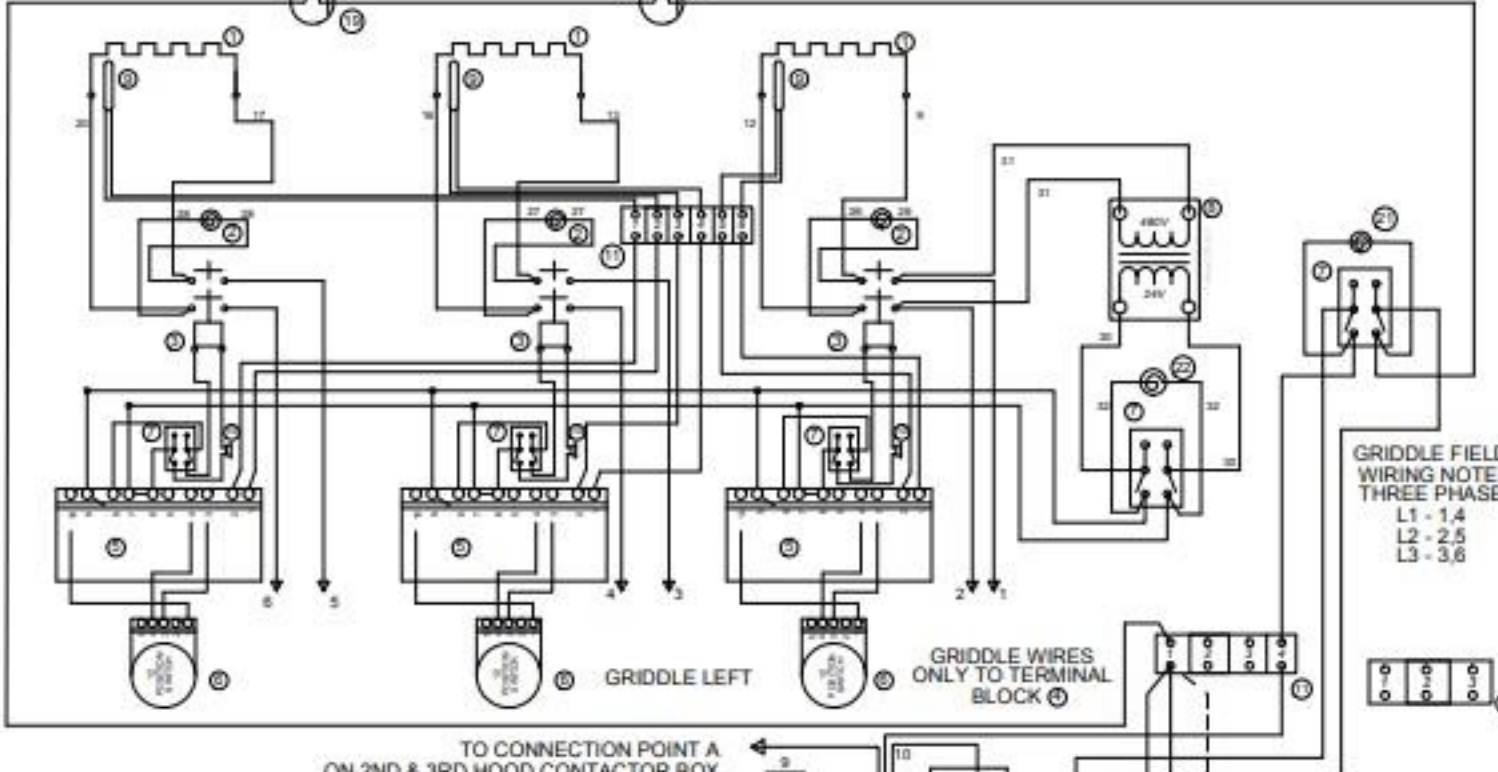
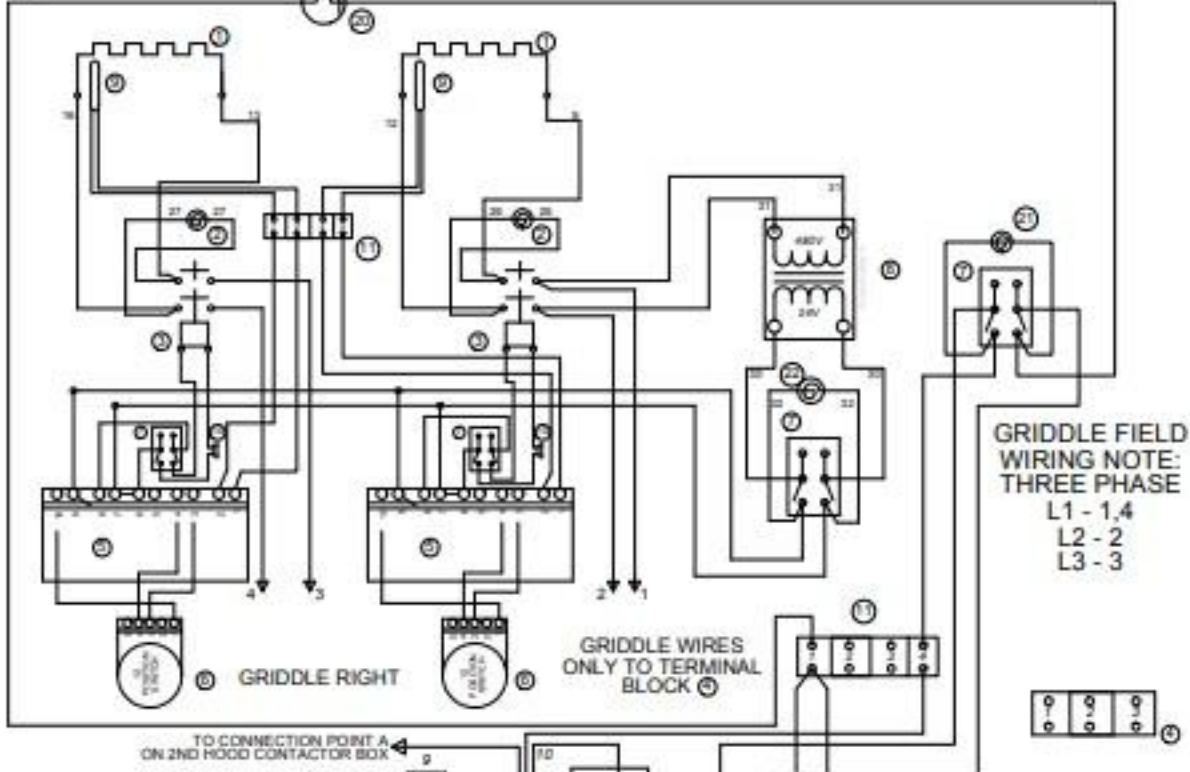


- 1 GRIDDLE ELEMENTS
- 2 GRIDDLE PILOT LAMP-480V
- 3 CONTACTOR - GRIDDLE
- 4 PWR CONNECT TERM BLK
- 5 TEMP CONTROL BOARD
- 6 12 POSITION SWITCH
- 7 TOGGLE SWITCH
- 8 TRANSFORMER, CL2
- 9 PROBE
- 10 OVERTEMP STAT - GRID
- 11 TERMINAL BLOCK
- 12 HOOD PILOT LAMP
- 13 HOOD OVERTEMP STAT #1
- 14 FUSES
- 15 CONTACTOR - HOOD
- 16 TIMER PLUGS
- 17 HOOD ELEMENTS
- 18 HOOD TILT SWITCH
- 19 HOOD OVERTEMP STAT #2
- 20 HOOD OVERTEMP STAT #3
- 21 CLAMSHELL PILOT LAMP-250V
- 22 GRIDDLE PILOT LAMP-28V



- NOTES:
- FUSE BLOCK PAIR REQUIRED FOR EVERY 1 OR 2 CLAMSHELL COMBINATION ON EACH POWER CONNECTION.
  - OVERTEMP STATS ARE LOCATED ON THE UNDERSIDE OF THE GRIDDLE PLATE. SEE TABLE 1 FOR ITEM 13,19 & 20 USAGE.
  - DASHED COMPONENTS ARE REQUIRED ONLY WHEN 3 HOODS ARE USED ON ONE POWER CONNECTION.
  - CLAMSHELL VOLTAGE MAY BE DIFFERENT THAN GRIDDLE VOLTAGE. SEE CLAMSHELL NAMEPLATE FOR PROPER VOLTAGE FOR CLAMSHELL.

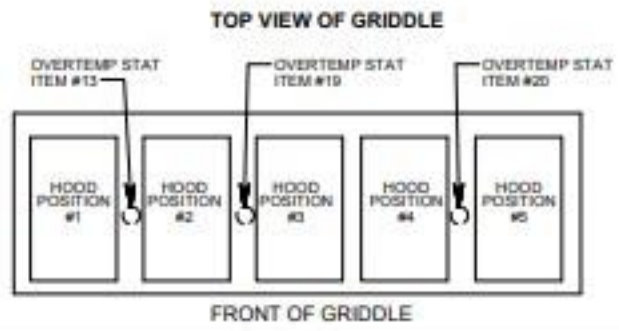


TABLE 1

HOOD POSITION #	USE OVERTEMP STAT ITEM #
1	13
2	13
3	19
4	20
5	20
1,2	13
1,3	13,19
1,4	13,20
1,5	13,20
2,3	19
2,4	13,20
2,5	13,20
3,4	19,20
3,5	19,20
4,5	20
1,2,3	13,19
1,2,4	13,20
1,2,5	13,20
1,4,5	13,20

TABLE 1

HOOD POSITION #	USE OVERTEMP STAT ITEM #
2,3,4	19,20
2,3,5	19,20
2,4,5	13,20
3,4,5	19,20
1,2,4,5	13,20
2,3,4,5	19,20
ALL OTHER COMBINATIONS	13,19 & 20

**Note:**

1. Add one more section for a single connection LG-48 (148S)
2. Add two more sections for a LG-60 (160S)
3. This wiring diagram shows 1/2 section for a LG-72 (172S) model
4. Do not use more than 4 contactors to one transformer

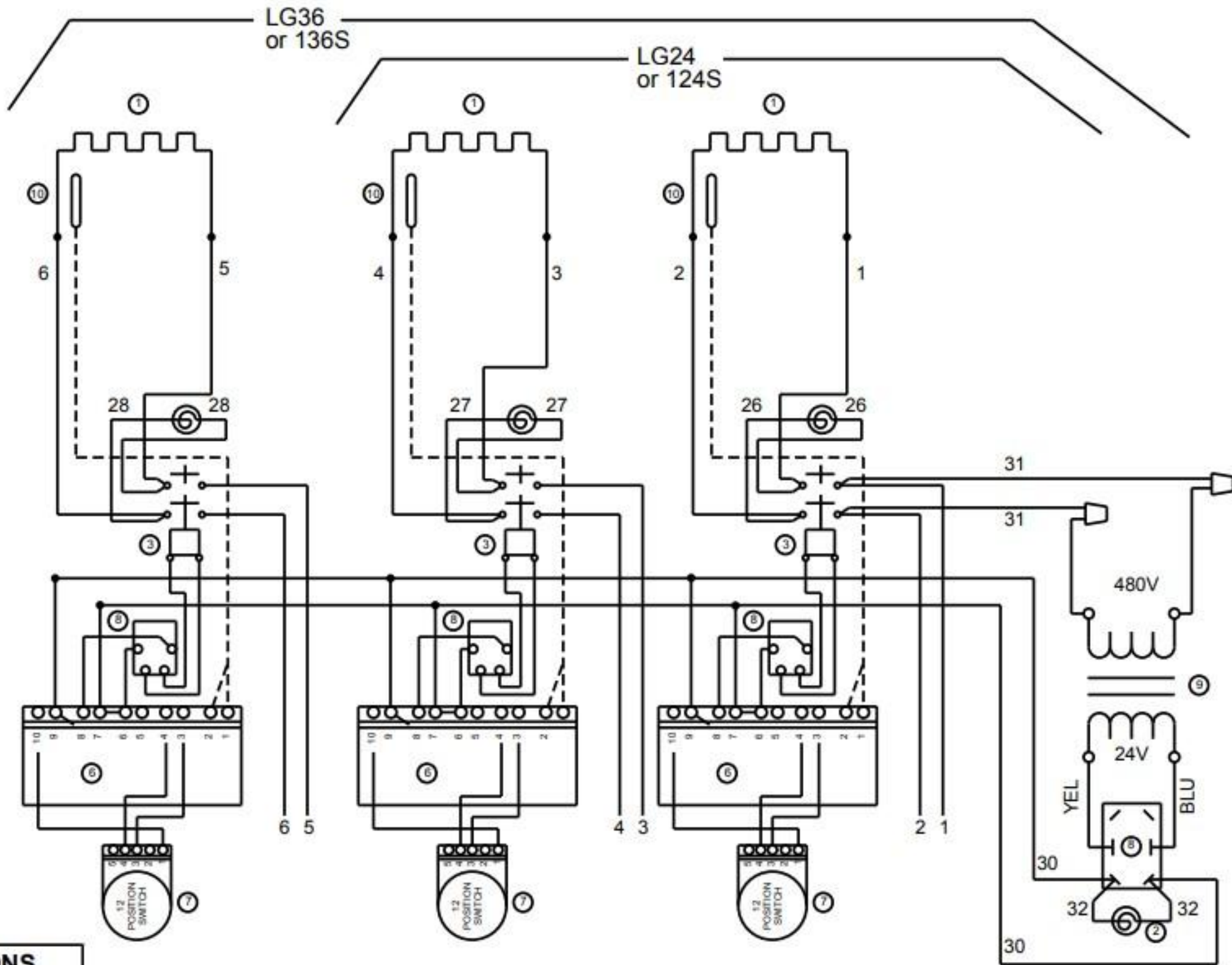
- ① GRIDDLE ELEMENTS
- ② GRIDDLE PILOT LAMP
- ③ CONTACTOR
- ④ JUMPER
- ⑤ TERMINAL BLOCK
- ⑥ TEMP. CONTROL BOARD
- ⑦ 12 POSITION SWITCH
- ⑧ TOGGLE SWITCH
- ⑨ TRANSFORMER, CLASS 2
- ⑩ PROBE

NOTE: SOME LG48 (148S) AND ALL LG60 (160S) & LG72 (172S) HAVE TWO POWER SUPPLY CONNECTIONS

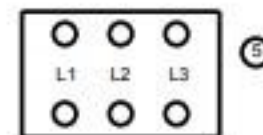
LG48 (148S): CONN # 1 USE LG24 (124S)  
CONN # 2 USE LG24 (124S)

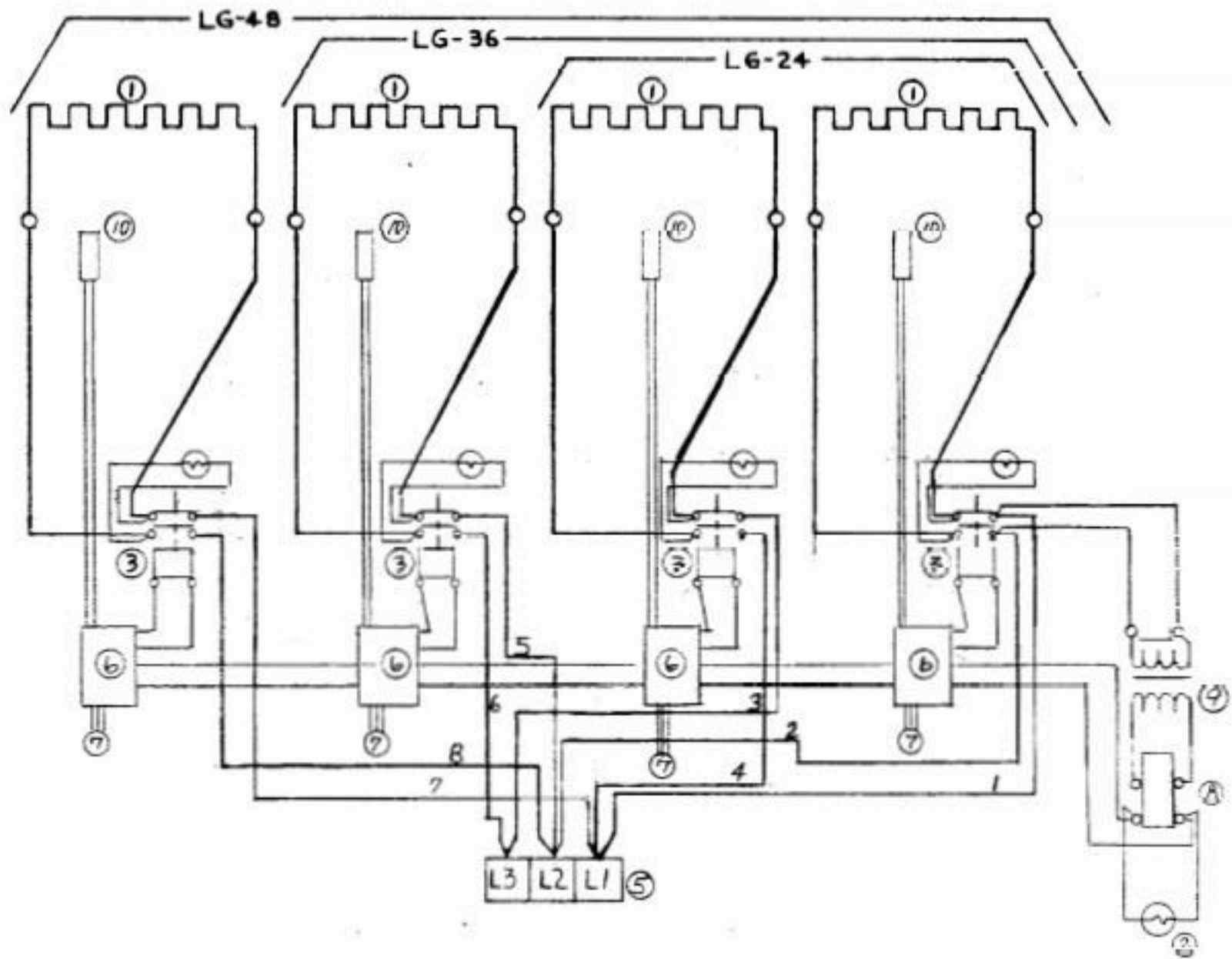
LG60 (160S): CONN # 1 USE LG36 (136S)  
CONN # 2 USE LG24 (124S)

LG72 (172S): CONN # 1 USE LG36 (136S)  
CONN # 1 USE LG36 (136S)



AMP TOTAL				SERVICE CONNECTIONS			
Model	L1	L2	L3	Model	Three Phase		
					L1	L2	L3
24	22	13	13	24	1,4	2	3
36	22	22	22	36	1,4	2,5	3,6
48	33	33	22	48	1,4,7	2,5,8	3,6
60	43	33	33				
72	43	43	43				





Note:

1. Add one more section for a single connection "48"
2. Add two more sections for a 60"
3. This wiring diagram shows 1/2 section for a 72" model
4. Do not use more than 4 contactors to one transformer

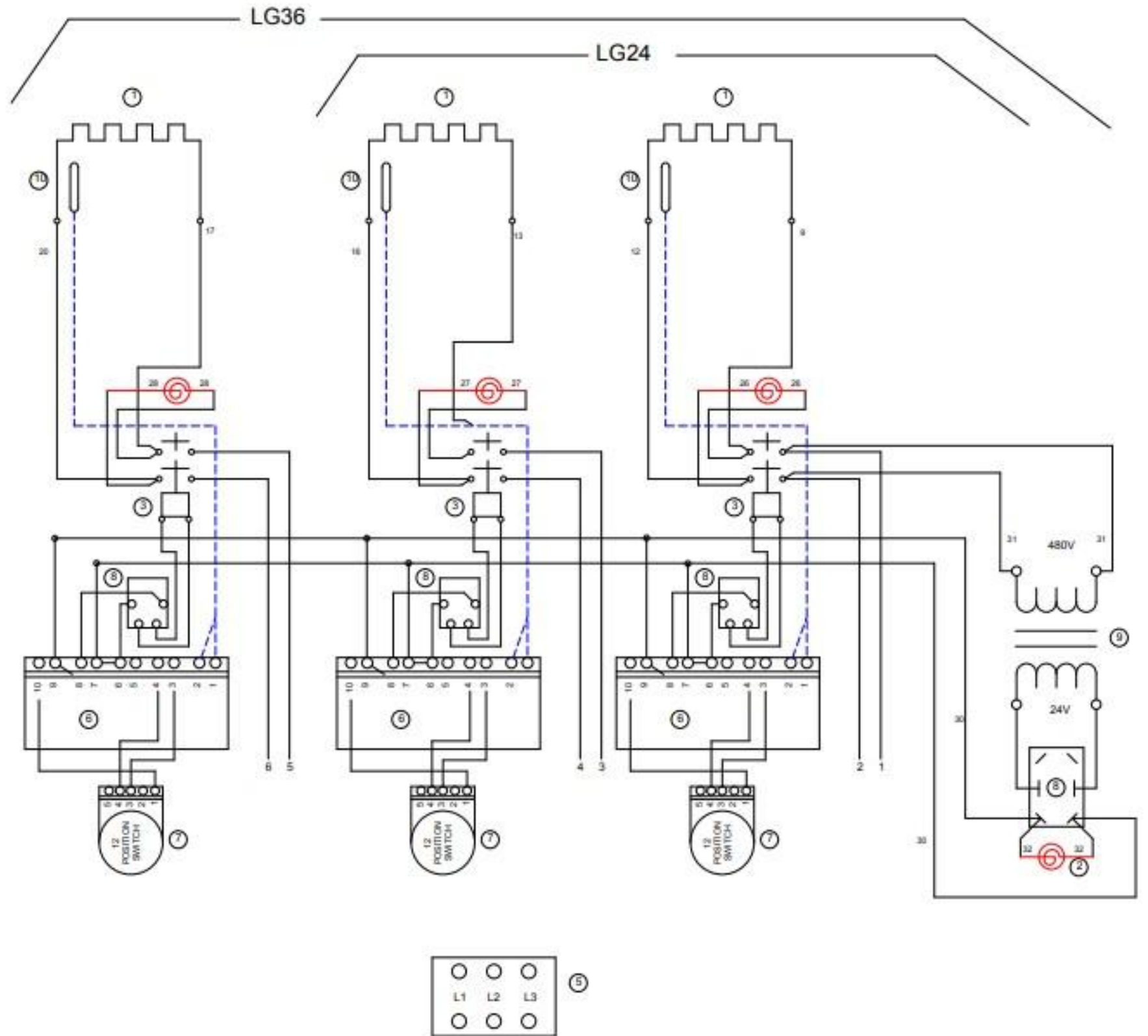
- ① GRIDDLE ELEMENTS
- ② GRIDDLE PILOT LAMP
- ③ CONTACTOR
- ④ JUMPER
- ⑤ TERMINAL BLOCK
- ⑥ TEMP. CONTROL BOARD
- ⑦ 12 POSITION SWITCH
- ⑧ TOGGLE SWITCH
- ⑨ TRANSFORMER
- ⑩ PROBE

NOTE: SOME 48" AND ALL 60" & 72" GRIDDLES HAVE TWO POWER SUPPLY CONNECTIONS

48": CONN # 1 USE LG24  
CONN # 2 USE LG24

60": CONN # 1 USE LG36  
CONN # 2 USE LG24

72": CONN # 1 USE LG36  
CONN # 1 USE LG36



ELEMENT HOOKUP	
208V	240V
INSTALL JUMPER	REMOVE JUMPER
④	④

- ① GRIDDLE ELEMENTS
- ② GRIDDLE PILOT LAMP
- ③ CONTACTOR
- ④ JUMPER
- ⑤ TERMINAL BLOCK
- ⑥ TEMP. CONTROL BOARD
- ⑦ 12 POSITION SWITCH
- ⑧ TOGGLE SWITCH
- ⑨ TRANSFORMER
- ⑩ PROBE

