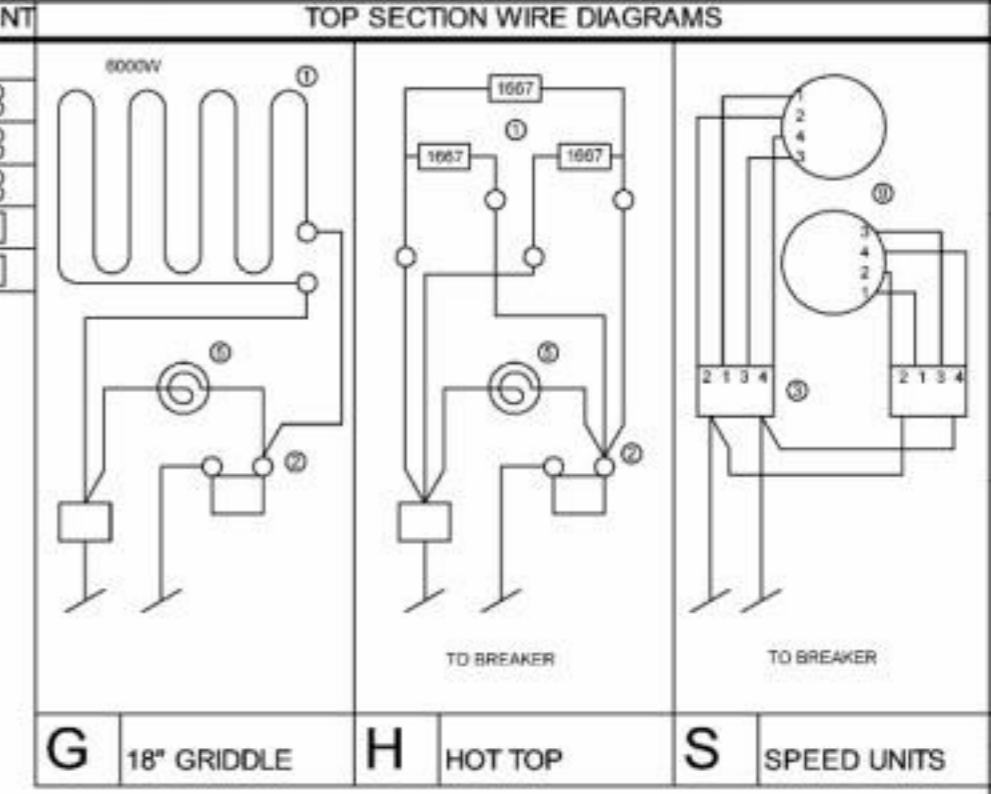


MODEL DESIGNATION	TOP ARRANGEMENT		
	SEC-1	SEC-2	
CCR30-SS & CMR30-SS	S	S	8 8
CCR30-HS & CMR30-HS	H	S	8 8
CCR30-GS & CMR30-GS	G	S	8 8
CCR30-HH & CMR30-HH	H	H	8 8
CCR30-GH & CMR30-GH	G	H	8 8

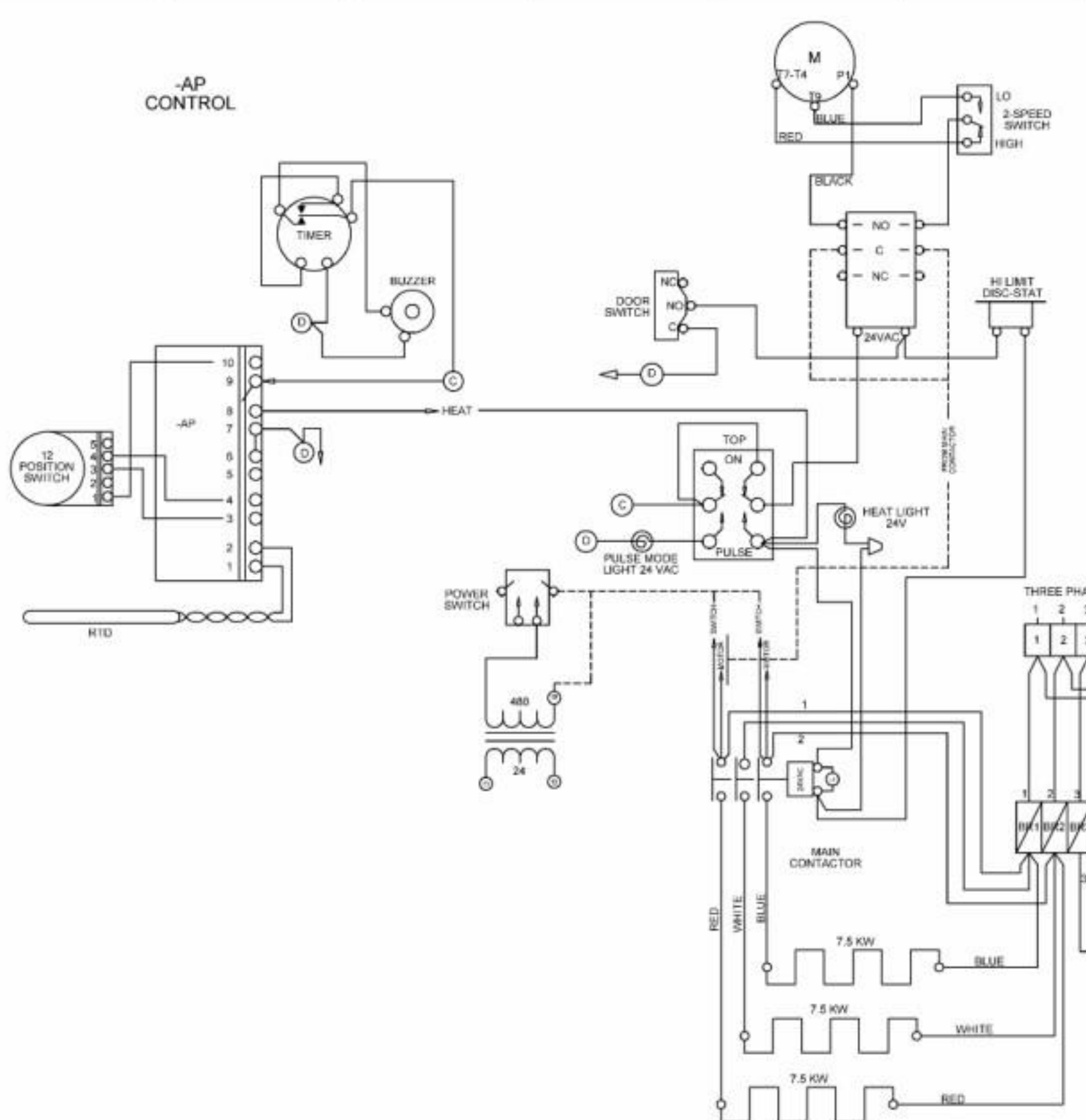
① HEAT ELEMENT
 ② THERMOSTAT
 ③ 6 HEAT SWITCH
 ④ MOTOR
 ⑤ PILOT LAMP
 ⑥ CONTACTOR
 ⑦ POWER SWITCH
 ⑧ SPEED UNIT
 ⑩ MICRO SWITCH



IMPORTANT
 RANGE TOP WIRES MUST BE CONNECTED IN OVEN CONTROL AREA.

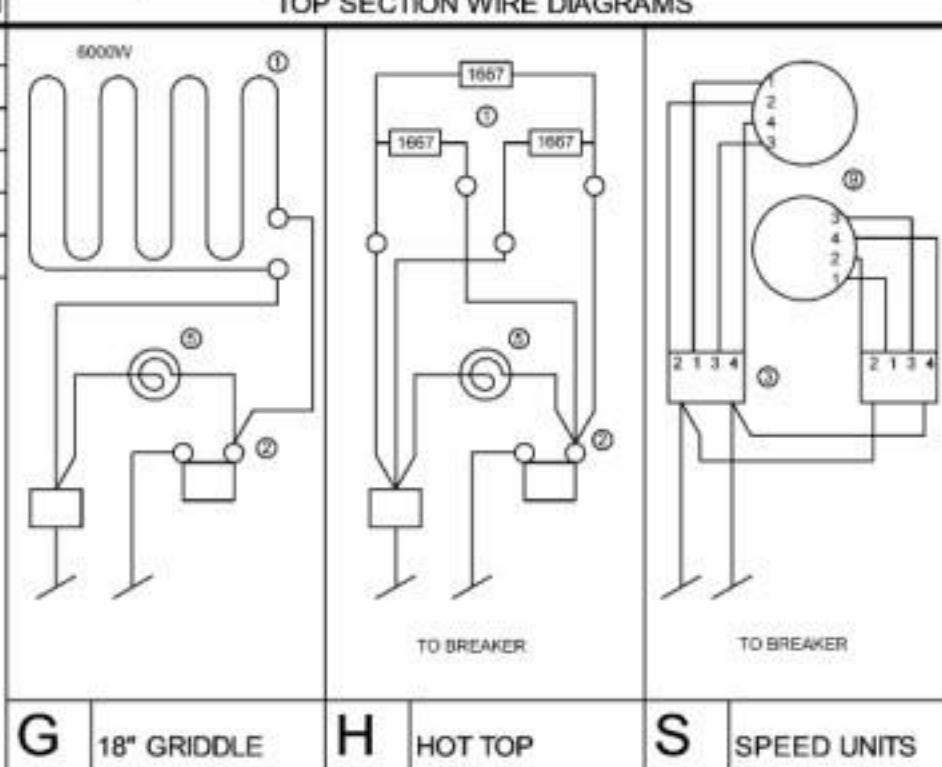
MODEL NUMBER	CONVECTION OVEN / RANGE ELEC DATA												
	SINGLE PHASE				THREE PHASE								
	KW	AMPS			KW PER PHASE				AMPS				
		208V	240V		L1-L2	L2-L3	L1-L3	TOTAL	208V		240V		
								L1	L	L3	L1	L2	L3
***-SS	17.9	86	75	7.5	5.2	5.2	17.9	61	61	50	53	53	44
***-HS	17.7	85	74	7.5	5.2	5.0	17.7	60	61	49	52	53	43
***-GS	18.7	90	78	7.5	5.2	6.0	18.7	61	65	54	53	56	47
***-SG	18.7	90	78	7.5	6.0	5.2	18.7	65	61	54	56	53	47
***-HH	17.5	84	73	7.5	5.0	5.0	17.5	60	60	48	52	52	42
***-GH	18.5	89	77	7.5	5.0	6.0	18.5	65	60	53	56	52	46

-AP CONTROL



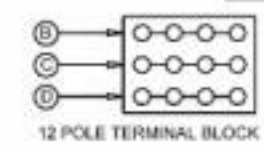
MODEL DESIGNATION	TOP ARRANGEMENT	
	SEC-1	SEC-2
CCR30-SS & CMR30-SS	S	S
CCR30-HS & CMR30-HS	H	S
CCR30-GS & CMR30-GS	G	S
CCR30-HH & CMR30-HH	H	H
CCR30-GH & CMR30-GH	G	H

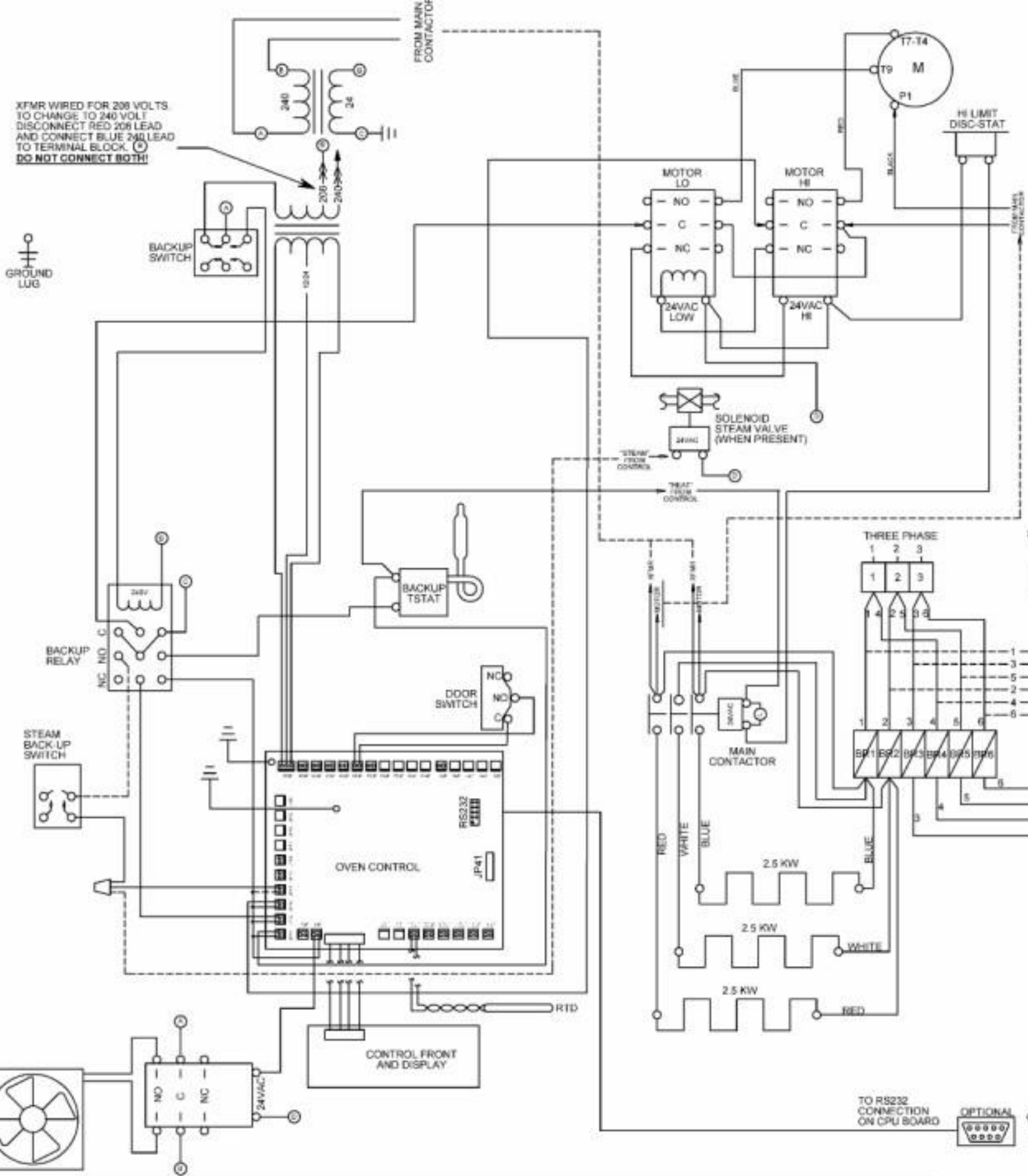
①	HEAT ELEMENT
②	THERMOSTAT
③	6 HEAT SWITCH
④	MOTOR
⑤	PILOT LAMP
⑥	CONTACTOR
⑦	POWER SWITCH
⑧	SPEED UNIT
⑩	MICRO SWITCH



IMPORTANT
RANGE TOP WIRES MUST BE CONNECTED IN OVEN CONTROL AREA.

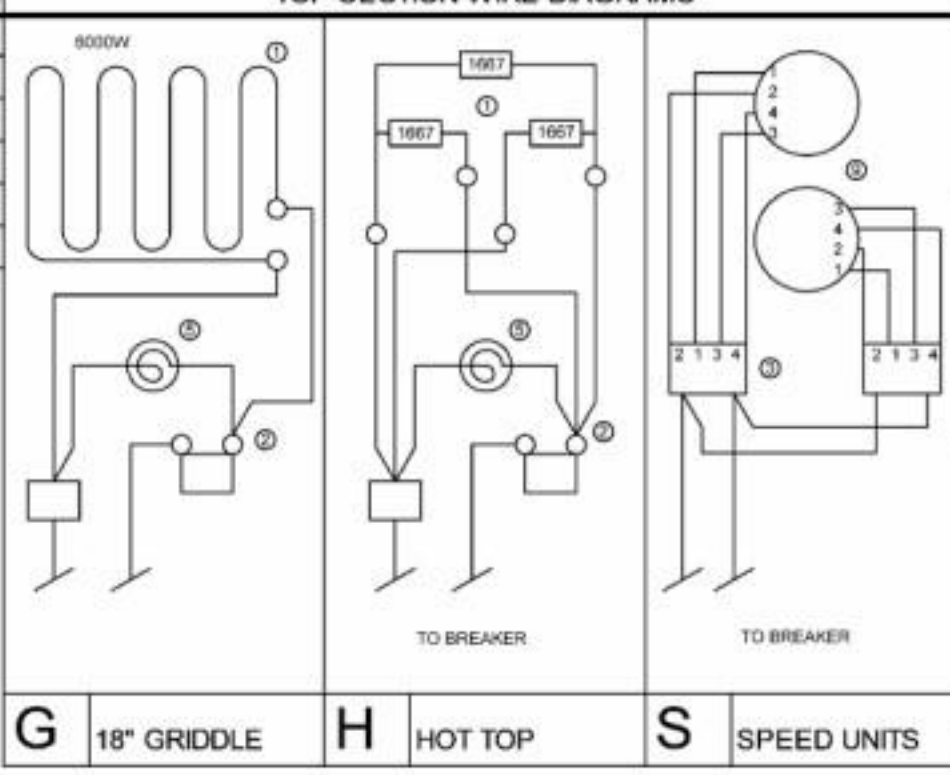
MODEL NUMBER	KW PER PHASE				AMPS		
	L1-L2	L2-L3	L1-L3	TOTAL	L1	L2	L3
***-SS	7.5	5.2	5.2	17.9	26	26	22
***-HS	7.5	5.2	5.0	17.7	26	26	21
***-GS	7.5	5.2	6.0	18.7	26	28	23
***-SG	7.5	6.0	5.2	16.5	28	26	23
***-HH	7.5	5.0	5.0	17.5	26	26	21
***-GH	7.5	5.0	6.0	18.5	28	26	23





MODEL DESIGNATION	TOP ARRANGEMENT	
	SEC-1	SEC-2
CCR30-SS & CMR30-SS	S	S
CCR30-HS & CMR30-HS	H	S
CCR30-GS & CMR30-GS	G	S
CCR30-HH & CMR30-HH	H	H
CCR30-GH & CMR30-GH	G	H

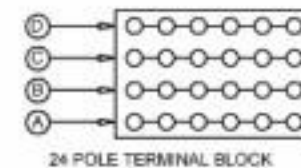
- ① HEAT ELEMENT
- ② THERMOSTAT
- ③ 6 HEAT SWITCH
- ④ MOTOR
- ⑤ PILOT LAMP
- ⑥ CONTACTOR
- ⑦ POWER SWITCH
- ⑧ SPEED UNIT
- ⑩ MICRO SWITCH



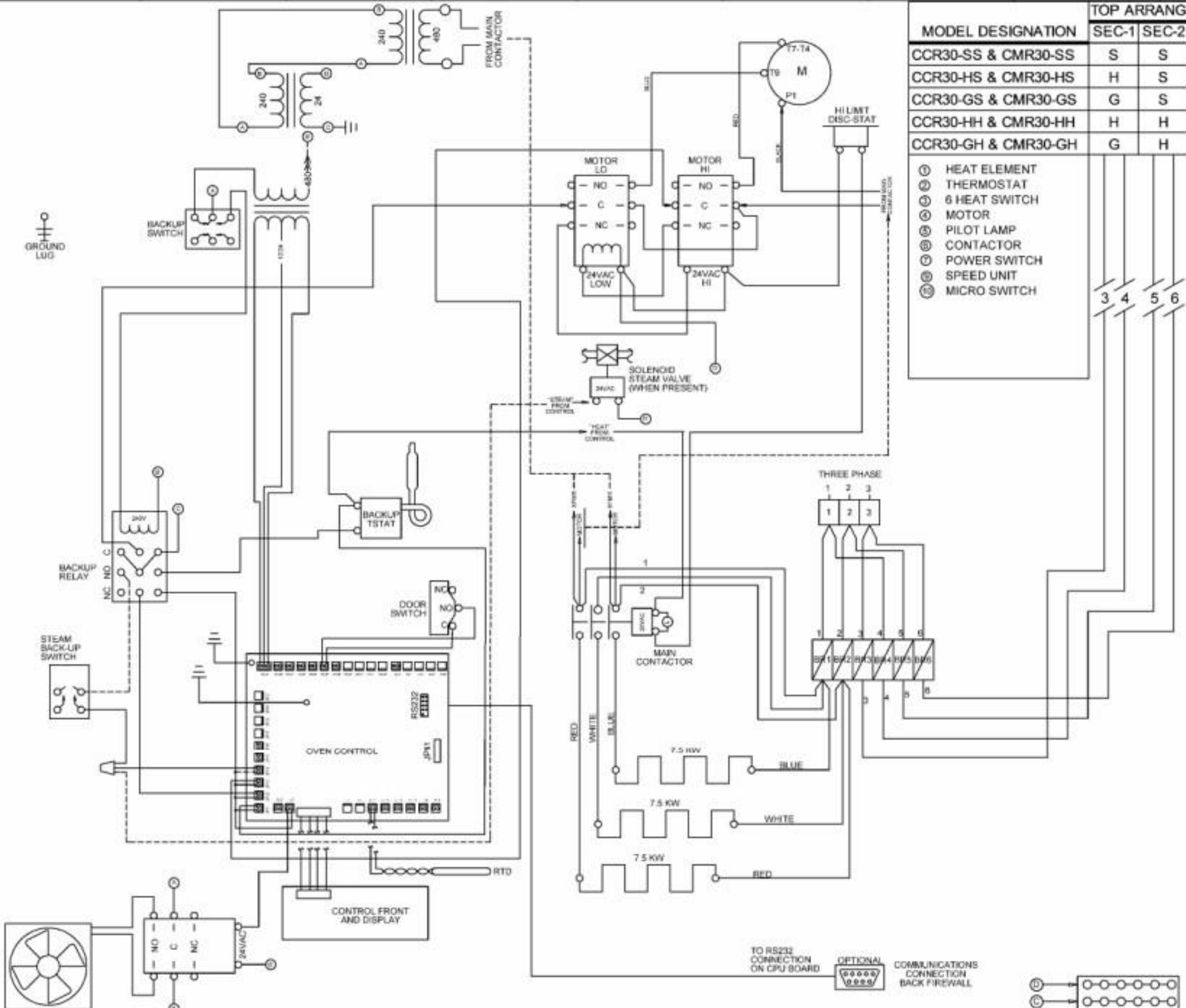
G 18" GRIDDLE **H** HOT TOP **S** SPEED UNITS

IMPORTANT
RANGE TOP WIRES MUST BE CONNECTED IN OVEN CONTROL AREA.

MODEL NUMBER	SINGLE PHASE			CONVECTION OVEN / RANGE ELEC DATA									
	KW	AMPS		THREE PHASE				AMPS					
		208V	240V	KW PER PHASE			208V			240V			
			L1-L2	L2-L3	L1-L3	TOTAL	L1	L	L3	L1	L2	L3	
***-SS	17.9	86	75	7.5	5.2	5.2	17.9	61	61	50	53	53	44
***-HS	17.7	85	74	7.5	5.2	5.0	17.7	60	61	49	52	53	43
***-GS	18.7	90	78	7.5	5.2	6.0	18.7	61	65	54	53	56	47
***-SG	18.7	90	78	7.5	6.0	5.2	18.7	65	61	54	56	53	47
***-HH	17.5	84	73	7.5	5.0	5.0	17.5	60	60	48	52	52	42
***-GH	18.5	89	77	7.5	5.0	6.0	18.5	65	60	53	56	52	46

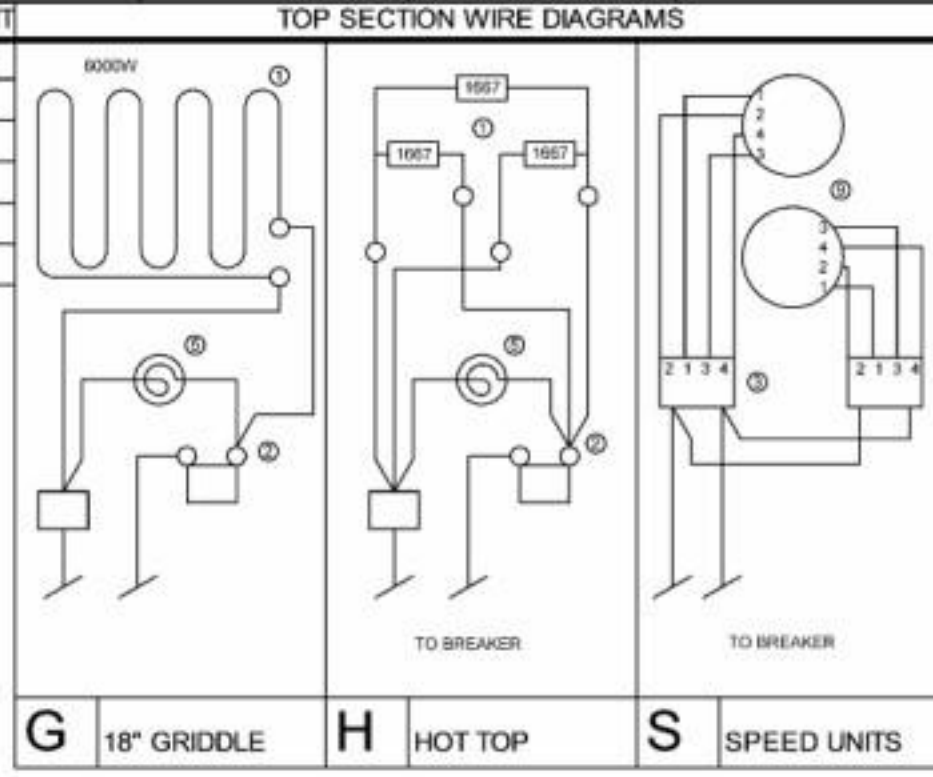


- JP11=HEAT
- JP12=HI SP MOTOR
- JP13=LO SP MOTOR
- JP14=OPT STEAM
- JP21=RTD
- JP35=DOOR SW
- JP37=ON-OFF
- GP3=CHASSIS GROUND
- GP4=CHASSIS GROUND
- JP41=RS232 CONNECTOR



MODEL DESIGNATION	TOP ARRANGEMENT	
	SEC-1	SEC-2
CCR30-SS & CMR30-SS	S	S
CCR30-HS & CMR30-HS	H	S
CCR30-GS & CMR30-GS	G	S
CCR30-HH & CMR30-HH	H	H
CCR30-GH & CMR30-GH	G	H

①	HEAT ELEMENT
②	THERMOSTAT
③	6 HEAT SWITCH
④	MOTOR
⑤	PILOT LAMP
⑥	CONTACTOR
⑦	POWER SWITCH
⑧	SPEED UNIT
⑨	MICRO SWITCH



IMPORTANT
 RANGE TOP WIRES MUST BE CONNECTED IN OVEN CONTROL AREA.

MODEL NUMBER	KW PER PHASE				AMPS		
	L1-L2	L2-L3	L1-L3	TOTAL	L1	L2	L3
***-SS	7.5	5.2	5.2	17.9	26	26	22
***-HS	7.5	5.2	5.0	17.7	26	26	21
***-GS	7.5	5.2	6.0	18.7	26	28	23
***-SG	7.5	6.0	5.2	16.5	28	26	23
***-HH	7.5	5.0	5.0	17.5	26	26	21
***-GH	7.5	5.0	6.0	18.5	28	26	23

- JP11=HEAT
- JP12=HI SP MOTOR
- JP13=LO SP MOTOR
- JP14=OPT STEAM
- JP21=RTD
- JP35=DOOR SW
- JP37=ON-OFF
- GP3=CHASSIS GROUND
- GP4=CHASSIS GROUND
- JP41=RS232 CONNECTOR