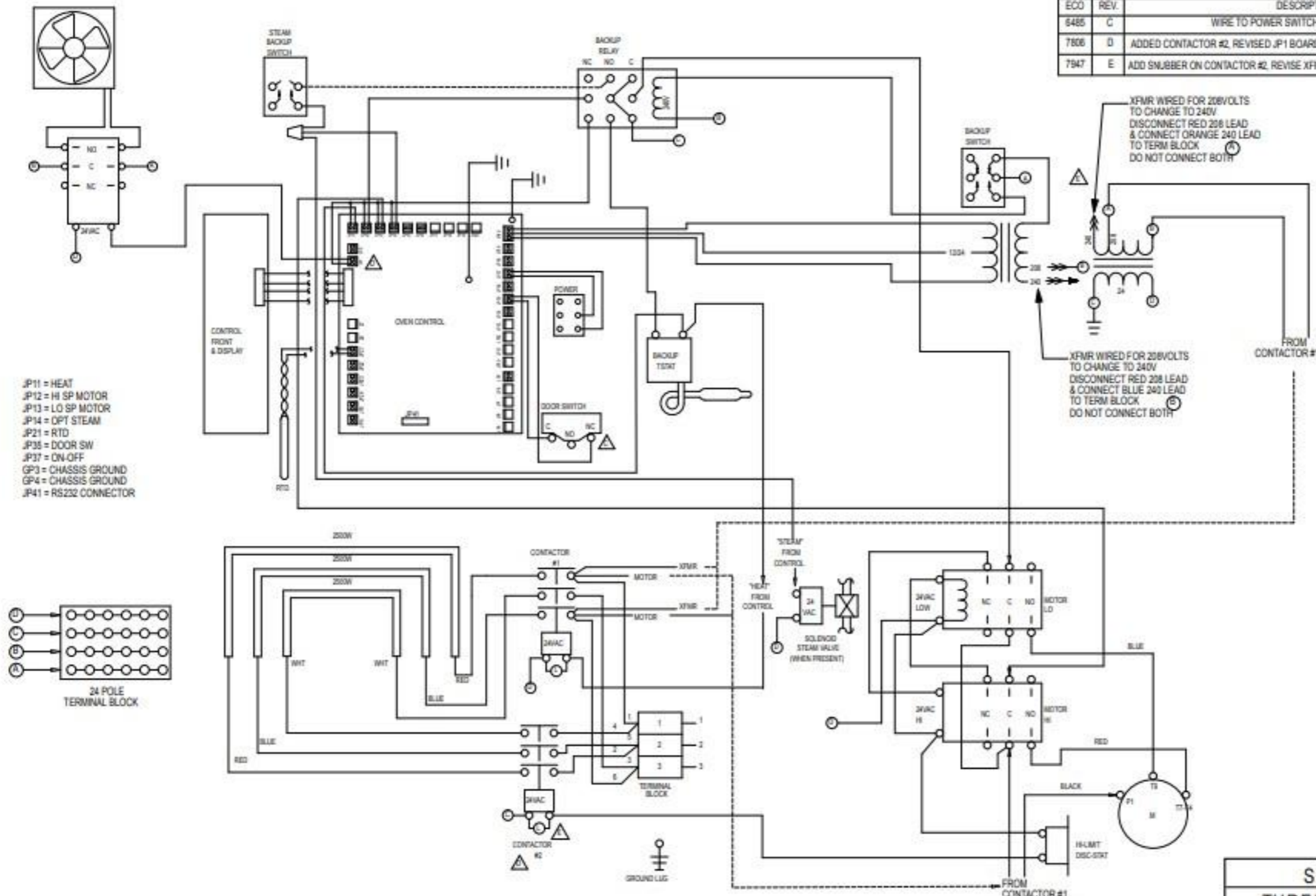
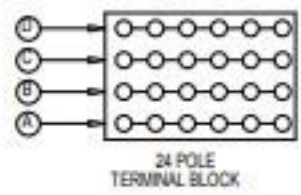


ECO	REV.	DESCRIPTION	DATE	APPR.
6485	C	WIRE TO POWER SWITCH NC WAS NO	1/14/2008	
7806	D	ADDED CONTACTOR #2, REVISED JP1 BOARD WIRING TO MATCH PRODUCTION	4/2/2009	DJS
7947	E	ADD SNUBBER ON CONTACTOR #2, REVISE XFMR WIRING, ADD XFMR NOTE, REV KW & AMP VALUES	5/19/2009	DJS



- JP11 = HEAT
- JP12 = HI SP MOTOR
- JP13 = LO SP MOTOR
- JP14 = OPT STEAM
- JP21 = RTD
- JP35 = DOOR SW
- JP37 = ON-OFF
- GP3 = CHASSIS GROUND
- GP4 = CHASSIS GROUND
- JP41 = RS232 CONNECTOR

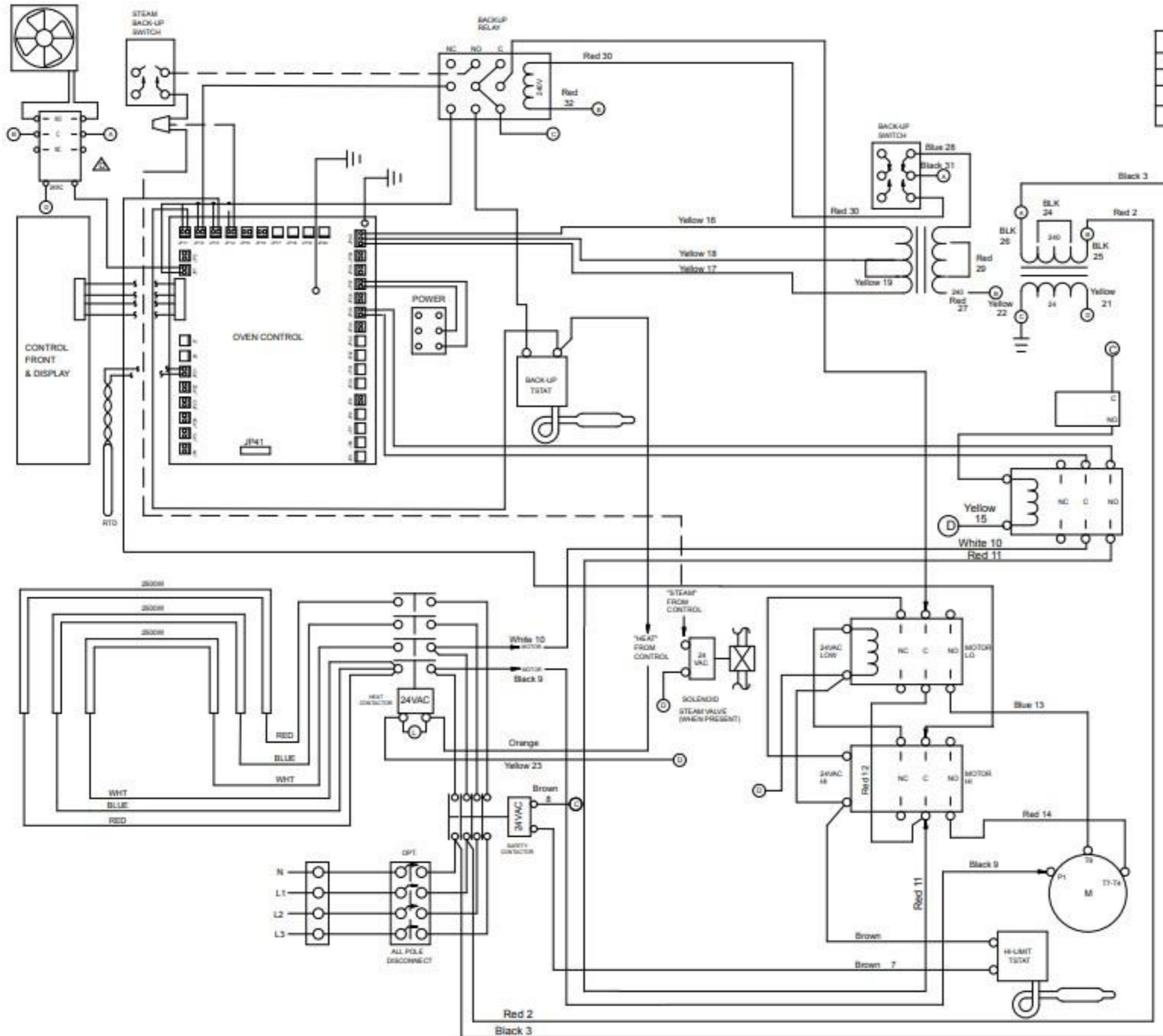


XFMR WIRED FOR 208VOLTS TO CHANGE TO 240V DISCONNECT RED 208 LEAD & CONNECT ORANGE 240 LEAD TO TERM BLOCK DO NOT CONNECT BOTH

XFMR WIRED FOR 208VOLTS TO CHANGE TO 240V DISCONNECT RED 208 LEAD & CONNECT BLUE 240 LEAD TO TERM BLOCK DO NOT CONNECT BOTH

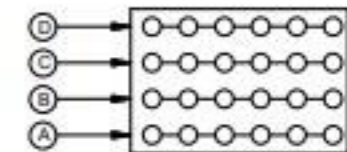
SERVICE CONNECTIONS				
THREE PHASE			SINGLE PHASE	
L1	L2	L3	L1	L2
1-4	2-5	3-6	1-3-5	2-4-6

VOLTS	KW				AMPS			
	L1-L2	L2-L3	L3-L1	TOTAL	L1	L2	L3	1 PHASE
208	2.5	2.5	2.8	7.8	22.1	20.8	22.1	37.5
240	2.5	2.5	2.8	7.8	19.1	18.0	19.1	32.5



REVISION BLOCK						
REV	ECH NO.	DESCRIPTION	DR.	MFG	ENG	DATE
C		ADDED SAFETY CONTACTOR	BJM			1-18-99
D	6485	ADDED FAN PICTORALLY	JMM			1/14/2008
E	7806	REV JP1 WRING TO MATCH PROD	DJS			4/3/2009

- JP11 = HEAT
- JP12 = HI SP MOTOR
- JP13 = LO SP MOTOR
- JP14 = OPT STEAM
- JP21 = RTD
- JP35 = DOOR SW
- JP37 = ON-OFF
- GP3 = CHASSIS GROUND
- GP4 = CHASSIS GROUND
- JP41 = RS232 CONNECTOR

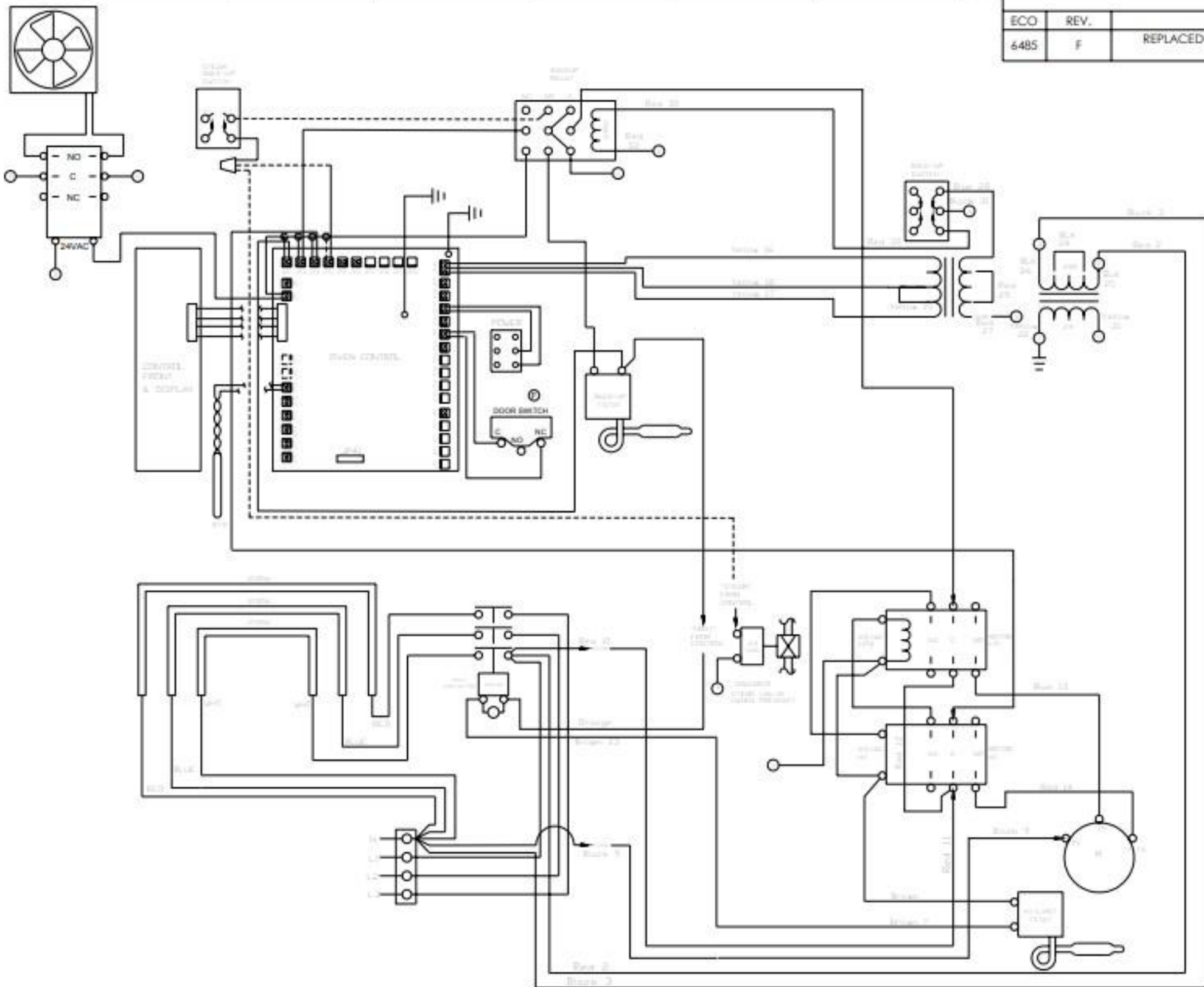


24 POLE  
TERMINAL BLOCK

VOLTS	KW				AMPS			
	L1	L2	L3	N	L1	L2	L3	N
220/380	2.3	1.9	1.9	.75	10.7	8.6	8.6	3.4
240/415	3.0	2.2	2.2	.99	12.5	9.17	9.19	4.15

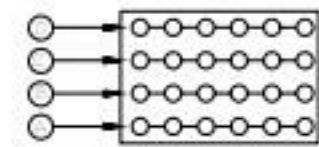
### PURPLE-PLUS

QTY	ITEM	PART NUMBER	DESCRIPTION / MATERIAL
<b>LANG MANUFACTURING</b>			
DR: 6EM DATE: 10-6-98		TITLE: W/D EH PP WITH 2 SPEED CE	
OK: DC DATE: 10-20-98		220/380 & 240/415 VAC	
TOLERANCES FRACTIONS DECIMALS +.154 .X + .28 .0005 .XX + .03 .0 .X UNLESS OTHERWISE SPECIFIED DIMENSIONS ARE IN INCHES		NEXT HIGHER ASSY.	SHEET
SCALE: TO FIT		1 of 1	DRAWING NUMBER
			REV
		2M-61111-170	E



REVISIONS				
ECO	REV.	DESCRIPTION	DATE	APPROVED
6485	F	REPLACED THE DOOR SWITCH WITH CORRECT PICTORIAL VIEW.	1/17/2008	JMM

- JP11 = HEAT
- JP12 = HI SP MOTOR
- JP13 = LO SP MOTOR
- JP14 = OPT STEAM
- JP21 = RTD
- JP22 = DEER SW
- JP27 = ON-OFF
- GP3 = CHASSIS GROUND
- GP4 = CHASSIS GROUND
- JP41 = RS232 CONNECTOR



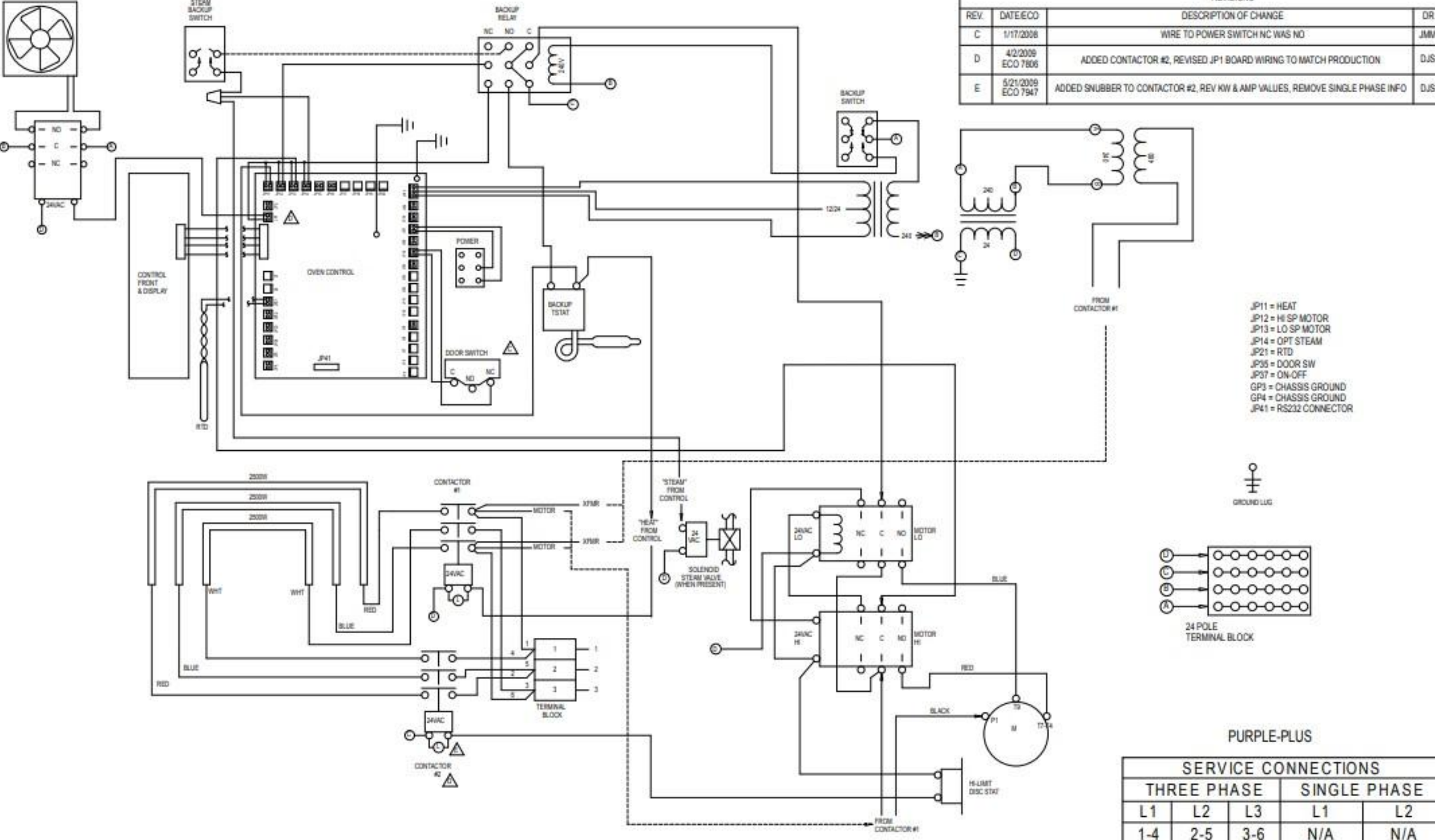
24 PILE TERMINAL BLOCK

PURPLE-PLUS

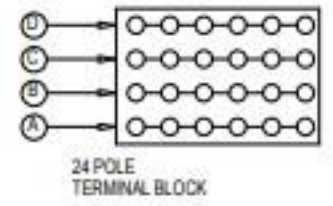
	DWN. BY: DLG	DWN. DATE: 11-24-03	REV. BY:	REV. DATE:	CHK. BY:	CHK. DATE:
	DESCRIPTION: W/D EH PP WITH 2 SPEED - 220/380 & 240/415 VAC					
	CAD FILE: FROM ACAD		DWG. NO: OB-61111-151		SHEET 1 OF 1	

	VOLTS	Kw				AMPS			
		L1-N	L2-N	L3-N	TOTAL	L1	L2	L3	N
EH	220/380	2.8	2.1	2.1	7.0	12.7	9.5	9.5	12.7
EH	240/415	3.2	2.5	2.5	8.2	13.3	10.4	10.4	13.3

REV.	DATE/ECO	DESCRIPTION OF CHANGE	DR
C	1/17/2008	WIRE TO POWER SWITCH NC WAS NO	JMM
D	4/2/2009 ECO 7806	ADDED CONTACTOR #2, REVISED JP1 BOARD WIRING TO MATCH PRODUCTION	DJS
E	5/21/2009 ECO 7947	ADDED SNUBBER TO CONTACTOR #2, REV KW & AMP VALUES, REMOVE SINGLE PHASE INFO	DJS



- JP11 = HEAT
- JP12 = HI SP MOTOR
- JP13 = LO SP MOTOR
- JP14 = OPT STEAM
- JP21 = RTD
- JP35 = DOOR SW
- JP37 = ON-OFF
- GP3 = CHASSIS GROUND
- GP4 = CHASSIS GROUND
- JP41 = RS232 CONNECTOR



PURPLE-PLUS

SERVICE CONNECTIONS				
THREE PHASE			SINGLE PHASE	
L1	L2	L3	L1	L2
1-4	2-5	3-6	N/A	N/A

	VOLTS	KW				AMPS			
		L1-L2	L2-L3	L3-L1	TOTAL	L1	L2	L3	1 PHASE
ECOH	480	2.5	2.5	2.8	7.8	9.5	9.0	9.5	N/A