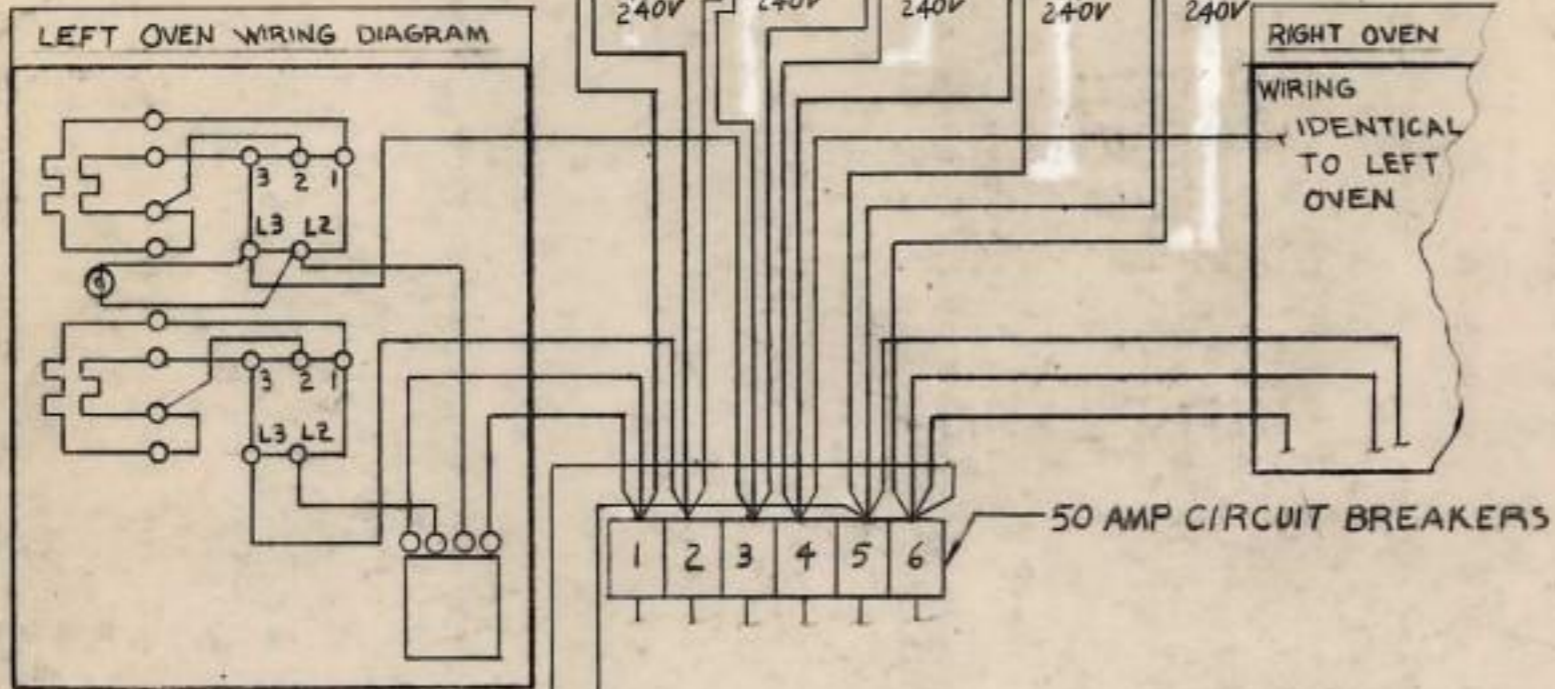
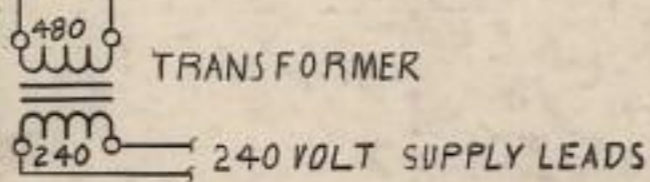


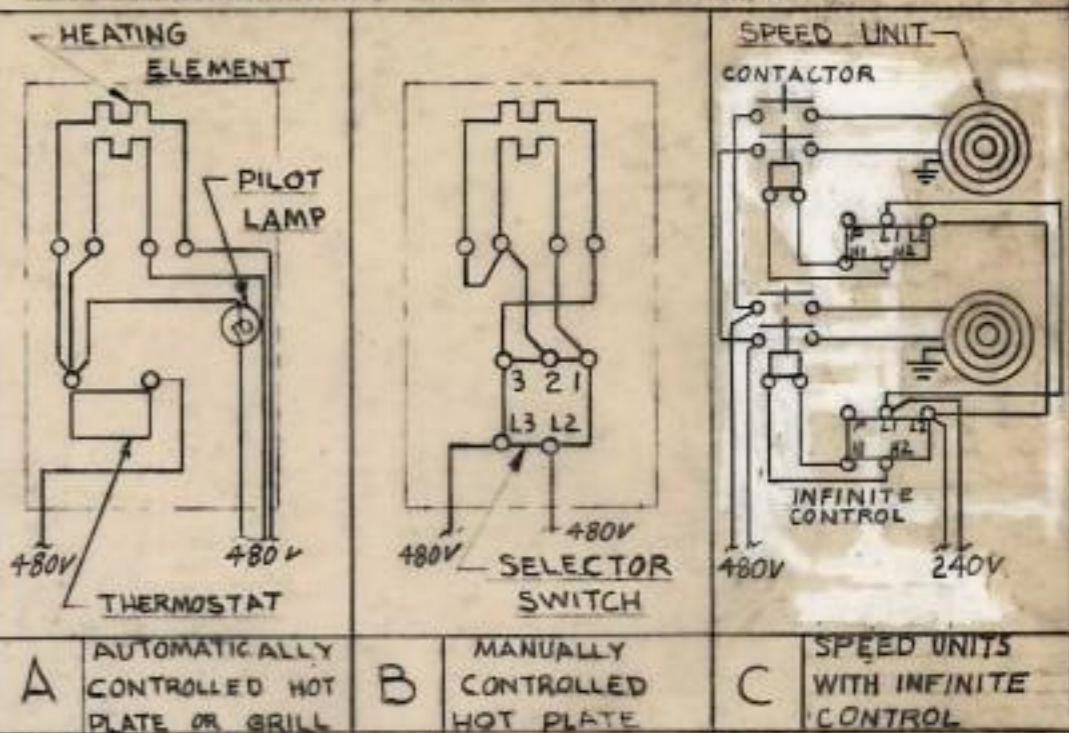
MODEL DESIGNATION	TOP ARRANGEMENT				
	SECTION 1	SECTION 2	SECTION 3	SECTION 4	SECTION 5
500S-A + 500S-ACT	B	B	B	B	B
500S-B + 500S-BCT	B	B	B	B	C
500S-C + 500S-CCT	A	A	B	B	C
500S-D + 500S-DCT	A	A	A	B	C
500S-E + 500S-ECT	A	A	A	A	B
500S-F + 500S-FCT	A	A	A	A	C
500S-G + 500S-GCT	A	A	A	A	A



SERVICE CONNECTION		
THREE PHASE	L1	1,4
	L2	2,5
	L3	3,6
KW PER PHASE	L1-L2	13
	L2-L3	13
	L3-L1	11



### TOP SECTION WIRING DIAGRAMS



### NOTES

- 1 EXAMPLE FOR DETERMINING THE WIRING OF A LANG RANGE.
- 1.1 VIEWED FROM THE FRONT, LEFT TO RIGHT, THE TOP ONE FOOT SECTIONAL ARRANGEMENT FOR A 500S-C RANGE IS A,A,B,B&C (AS DETERMINED BY THE TOP ARRANGEMENT CHART) EACH OF THE LETTERS REPRESENT ONE OF THE TYPICAL WIRING DIAGRAMS SHOWN ABOVE.
- 1.2 THE POWER INPUT LEADS TO EACH TOP SECTION AND THE OVEN ARE SHOWN IN THE DIAGRAM AT THE LEFT. CONNECTED TO THEIR RESPECTIVE CIRCUIT BREAKERS.
- 1.3 PROPER RANGE PHASING AND POWER DISTRIBUTION TO EACH CIRCUIT MAY BE DETERMINED BY REFERRING TO THE SERVICE CONNECTION CHART.

USE ON SERIAL NO. A16251 AND ON.

QTY.		MATERIAL	
LANG MFG. CO.		500 SERIES RANGE	
REDMOND, WA.		480 V. AC.	
DR. MGW	7-6-79	DWG. NO.	61104-02
CK. BJM	7-6-79	REV. NO.	