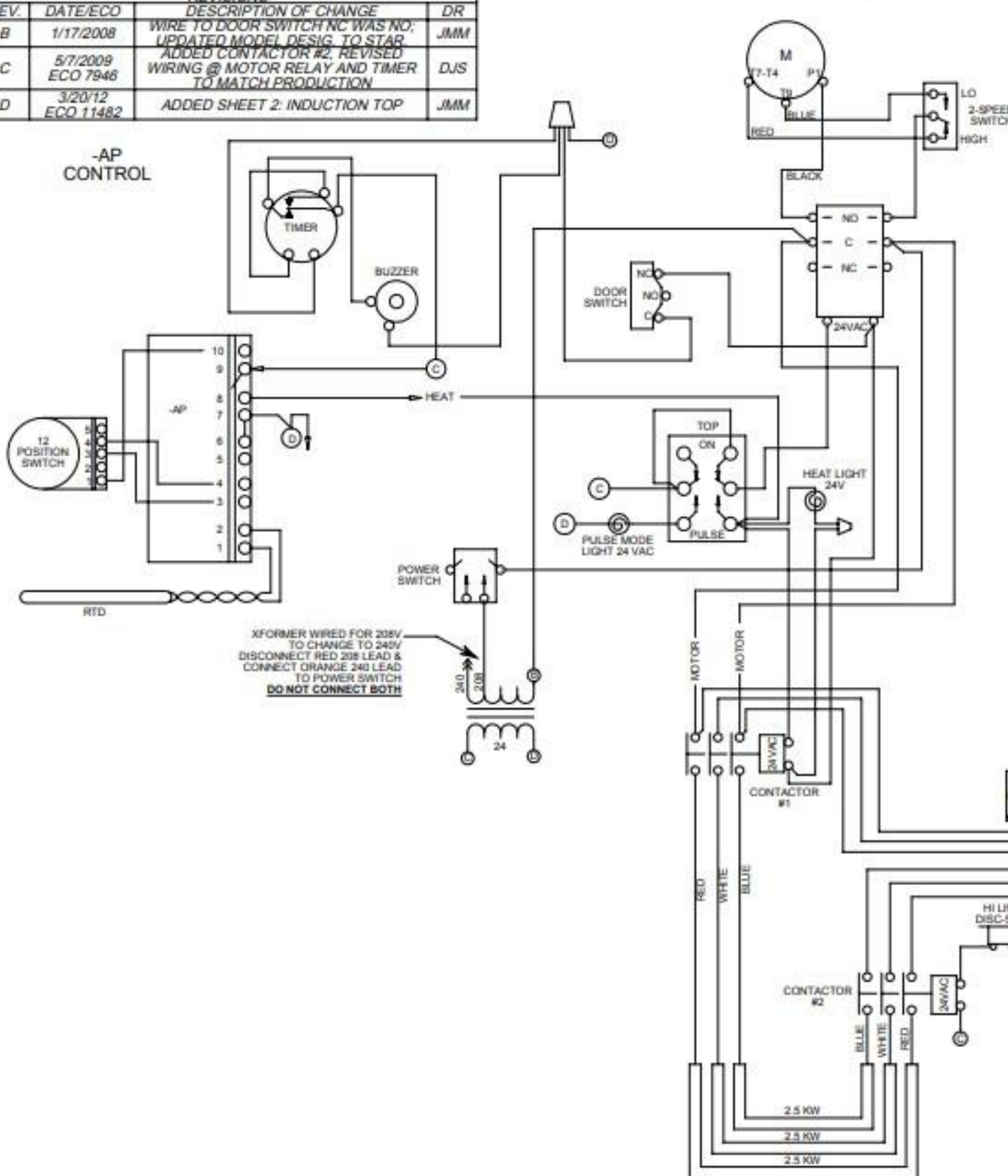


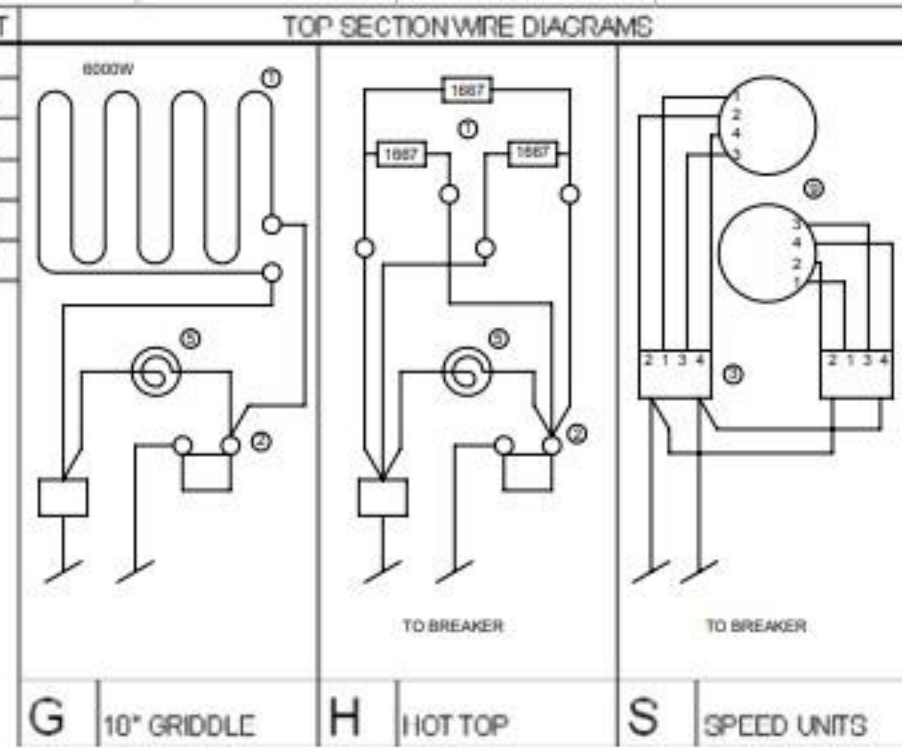


REV.	DATE/ECO	REVISIONS	DR
B	1/17/2008	WIRE TO DOOR SWITCH NC WAS NO; UPDATED MODEL DESIG. TO STAR	JMM
C	5/7/2009 ECO 7946	ADDED CONTACTOR #2, REVISED WIRING @ MOTOR RELAY AND TIMER TO MATCH PRODUCTION	DJS
D	3/20/12 ECO 11482	ADDED SHEET 2: INDUCTION TOP	JMM

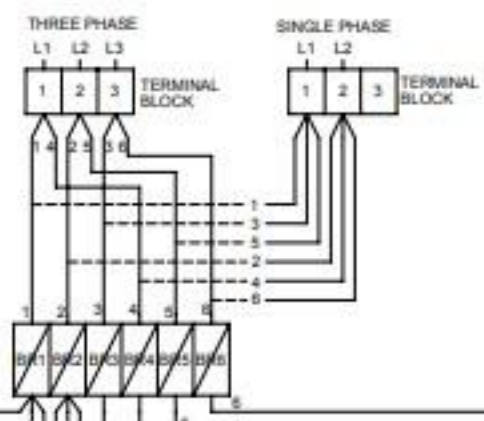


MODEL DESIGNATION	TOP ARRANGEMENT		
	SFC-1	SFC-2	
CCR30-A & CMR30-A	S	S	88
CCR30-B & CMR30-B	H	S	88
CCR30-D & CMR30-D	C	S	88
CCR30-C & CMR30-C	H	H	88
CCR30-F & CMR30-F	G	H	88

**IMPORTANT**  
RANGE TOP WIRES MUST BE CONNECTED IN OVEN CONTROL AREA.

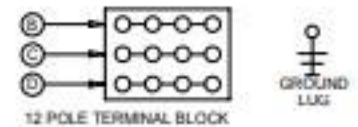


**SEE SHEET 2 FOR INDUCTION**



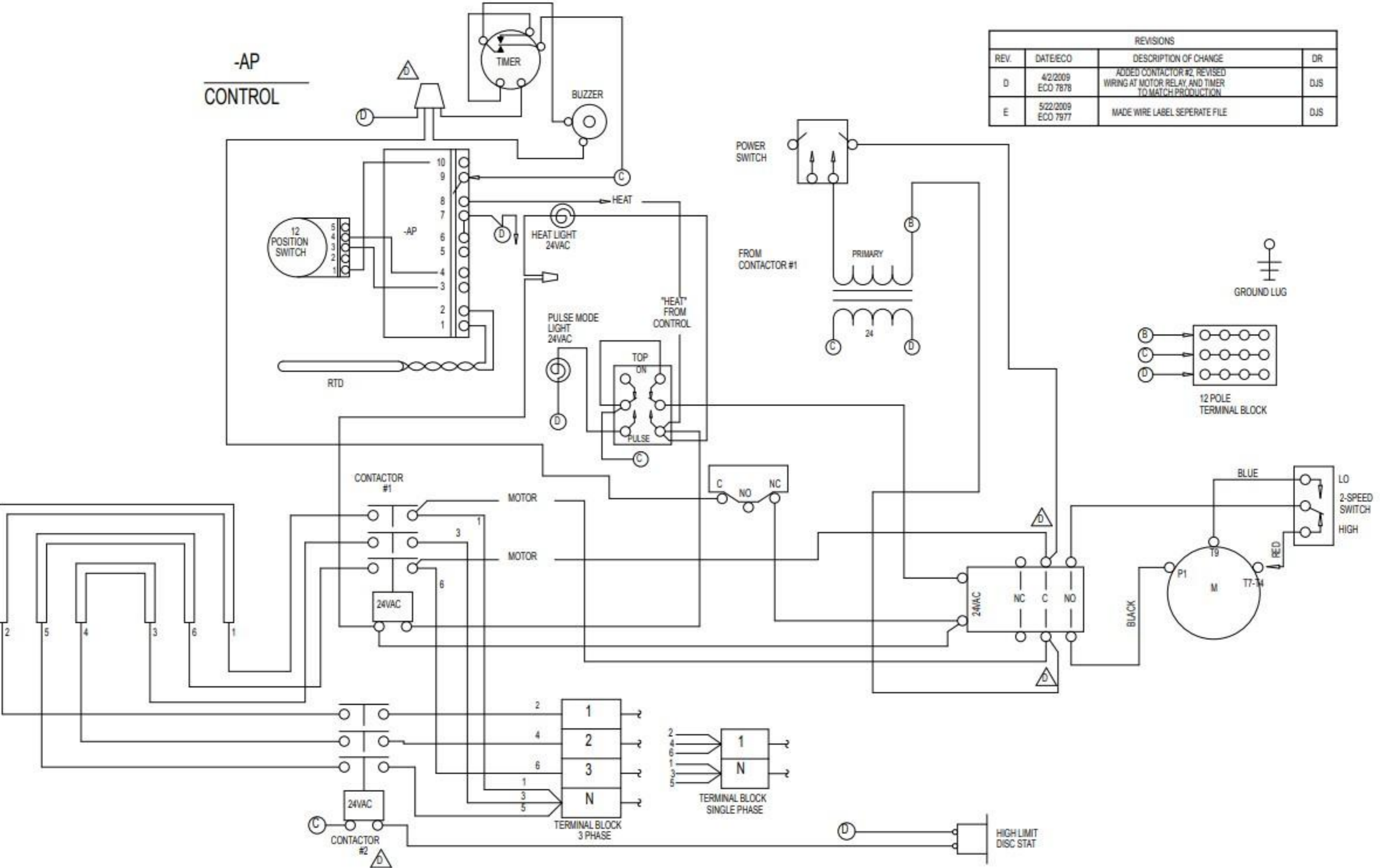
SERVICE CONNECTIONS				
3 PHASE			SINGLE PHASE	
L1	L2	L3	L1	L2
1,4	2,5	3,6	1,3,5	2,4,6

MODEL NUMBER	CONVECTION OVEN RANGE ELECTRICAL DATA											
	LOADING				AMPS THREE PHASE						SINGLE PHASE	
	KW/PER PHASE				200 VOLT			240 VOLT			200	240
	L1-L2	L2-L3	L1-L3	TOTAL	L1	L2	L3	L1	L2	L3		
***A	7.8	5.2	5.2	18.2	54.5	54.5	43.3	47.2	47.2	37.5	87.5	75.8
***B	7.8	5.2	6.0	18.0	53.7	54.5	42.6	46.6	47.2	36.8	86.5	75.0
***C	7.8	5.0	5.0	17.8	53.7	53.7	41.6	46.6	46.6	36.1	85.6	74.2
***D	7.8	5.2	6.0	18.5	57.6	54.5	46.7	49.9	47.2	40.4	79.3	68.8
***E	7.8	5.0	6.0	18.8	57.6	53.7	45.9	49.9	46.6	39.6	90.4	78.3
***F	7.8	5.5	5.5	18.8	55.7	55.7	45.8	48.2	48.2	39.7	90.4	78.3
***G	7.8	6.0	5.2	19.0	54.5	57.6	46.7	47.2	49.9	40.4	91.3	79.2



-AP  
CONTROL

REVISIONS			
REV.	DATE/ECO	DESCRIPTION OF CHANGE	DR
D	4/2/2009 ECO 7878	ADDED CONTACTOR #2, REVISED WIRING AT MOTOR RELAY, AND TIMER TO MATCH PRODUCTION	DJS
E	5/22/2009 ECO 7977	MADE WIRE LABEL SEPERATE FILE	DJS

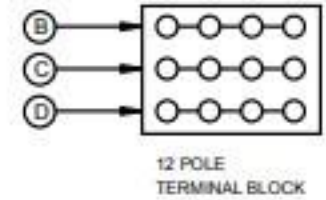




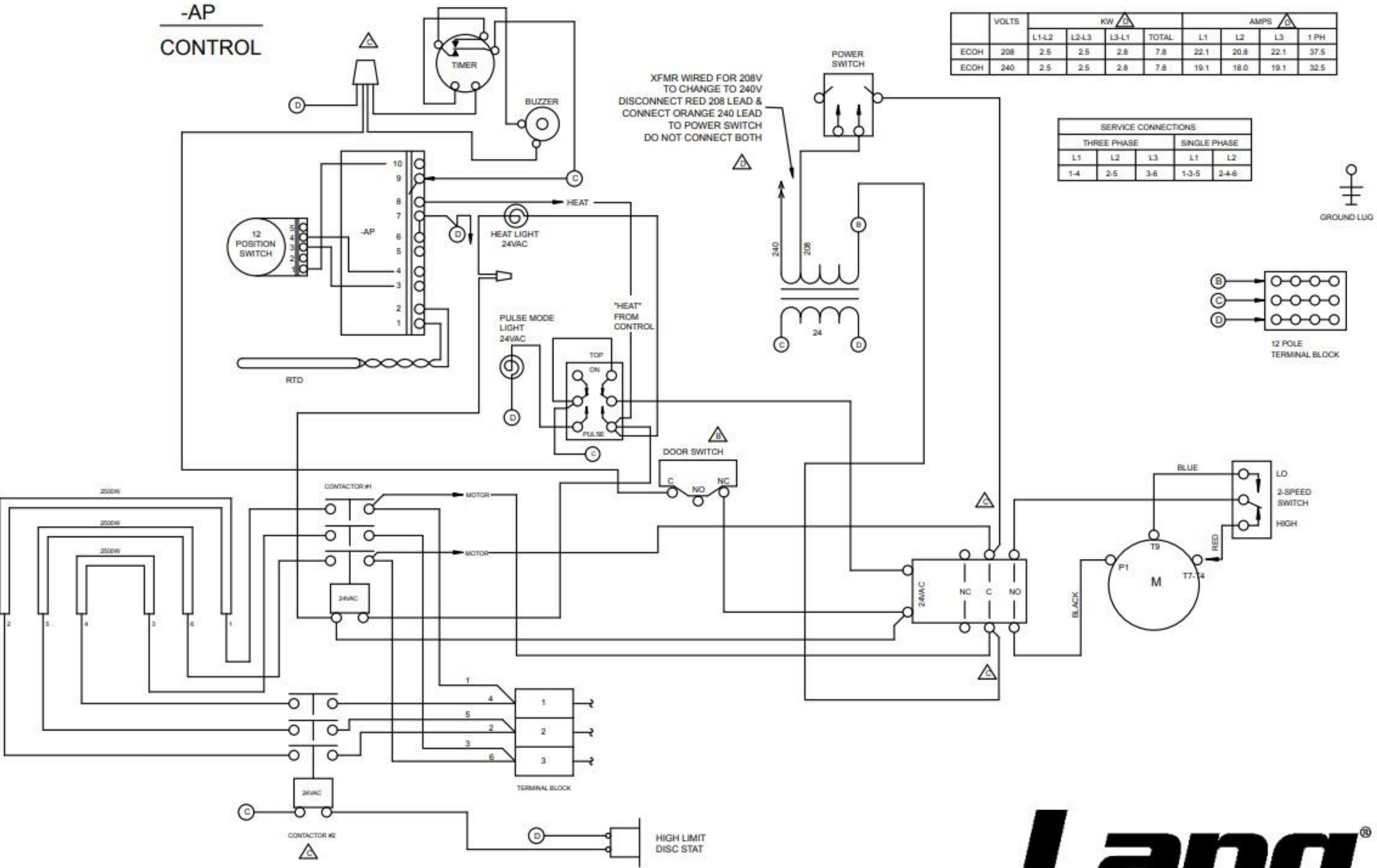
**-AP  
CONTROL**

	VOLTS	KW $\Delta$				AMPS $\Delta$			
		L1-L2	L2-L3	L3-L1	TOTAL	L1	L2	L3	1 PH
ECOH	208	2.5	2.5	2.8	7.8	22.1	20.8	22.1	37.5
ECOH	240	2.5	2.5	2.8	7.8	19.1	18.0	19.1	32.5

SERVICE CONNECTIONS					
THREE PHASE			SINGLE PHASE		
L1	L2	L3	L1	L2	
1-4	2-5	3-6	1-3-5	2-4-6	



XFMR WIRED FOR 208V  
TO CHANGE TO 240V  
DISCONNECT RED 208 LEAD &  
CONNECT ORANGE 240 LEAD  
DO NOT CONNECT BOTH



THIS DRAWING CONTAINS INFORMATION CONFIDENTIAL TO STAR MFG. INT'L. INC.  
NO REPRODUCTION OR DISCLOSURE OF ITS CONTENTS IS PERMITTED.

**MODELS:**  
ECOH-AP, RCOH-AP 208/240VAC  
EHS-AP, 208/240VAC

