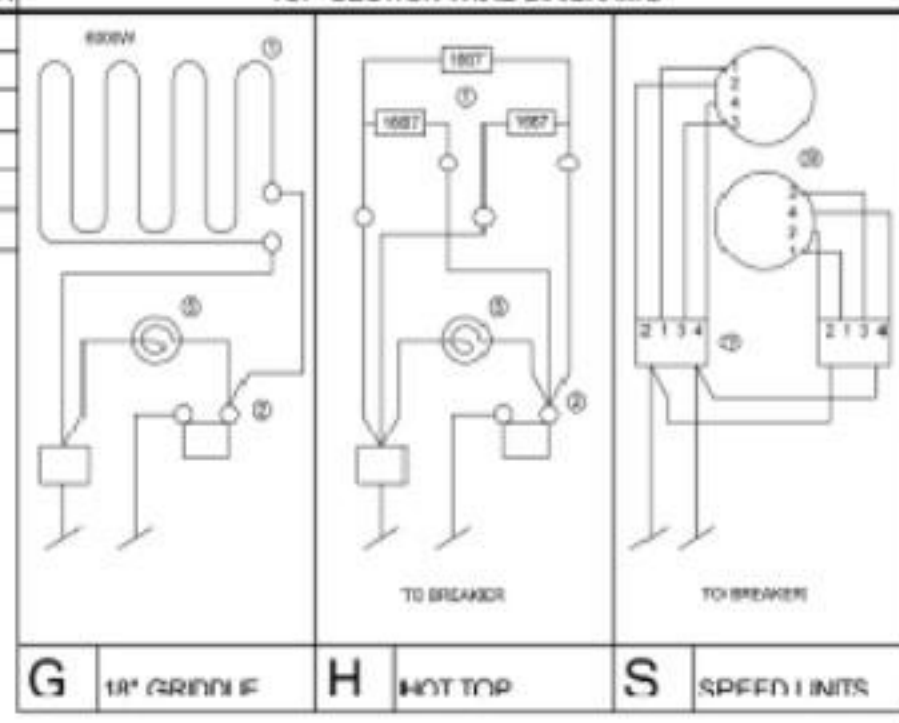


MODEL DESIGNATION	TOP ARRANGEMENT	
	SEC-1	SEC-2
CCR30-SS & CMR30-SS	S	S
CCR30-HS & CMR30-HS	H	S
CCR30-GS & CMR30-GS	G	S
CCR30-HH & CMR30-HH	H	H
CCR30-GH & CMR30-GH	G	H

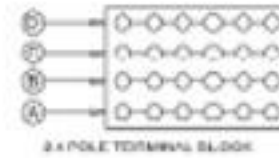
①	HEAT ELEMENT
②	THERMOSTAT
③	6 HEAT SWITCH
④	MOTOR
⑤	PILOT LAMP
⑥	CONTACTOR
⑦	POWER SWITCH
⑧	SPEED UNIT
⑨	MICRO SWITCH



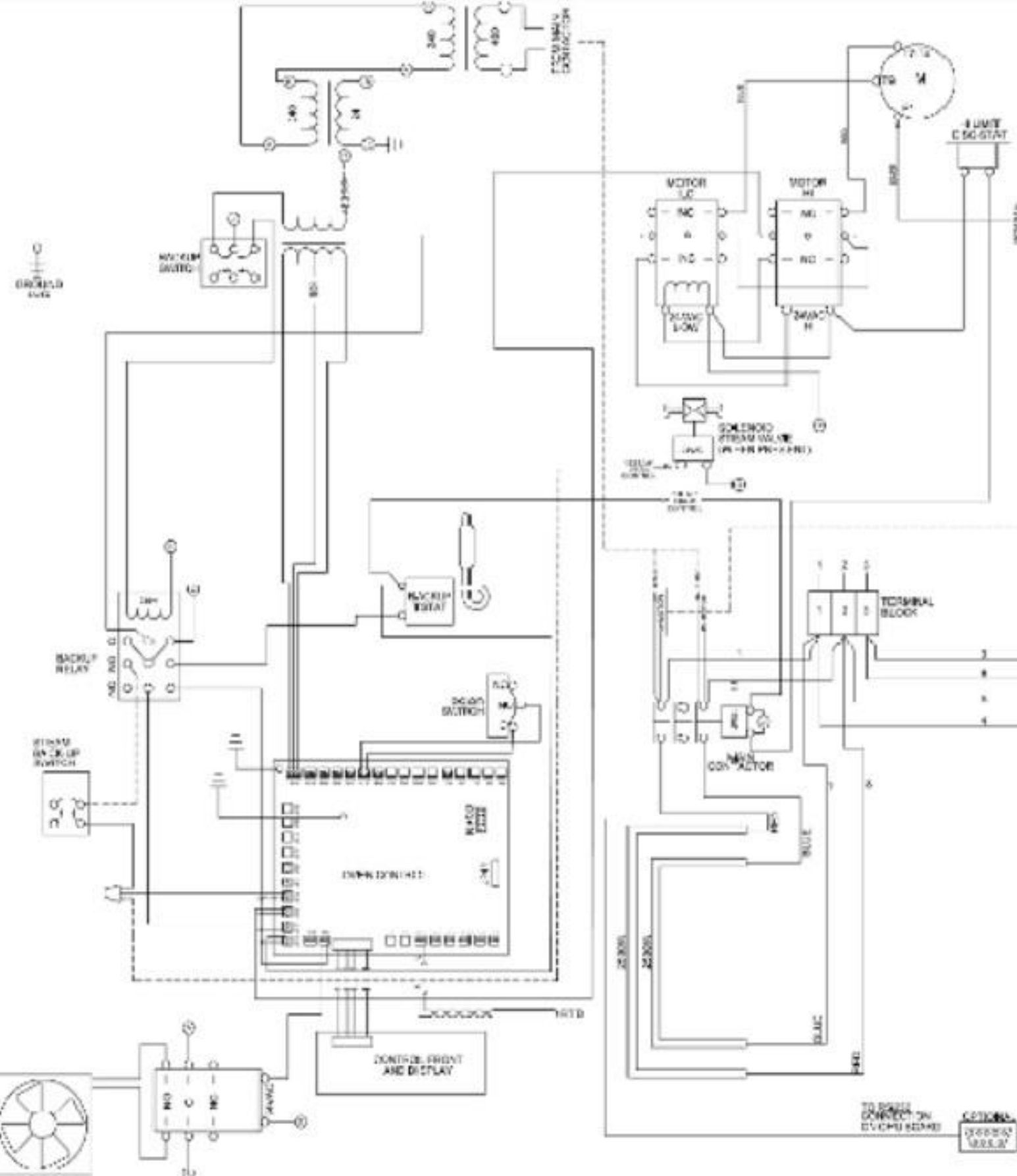
**IMPORTANT**  
RANGE TOP WIRES MUST BE CONNECTED IN OVEN CONTROL AREA.

CONNECTIONS		
3 PHASE		
L1	L2	L3
1,4,7	2,5,8	3,6

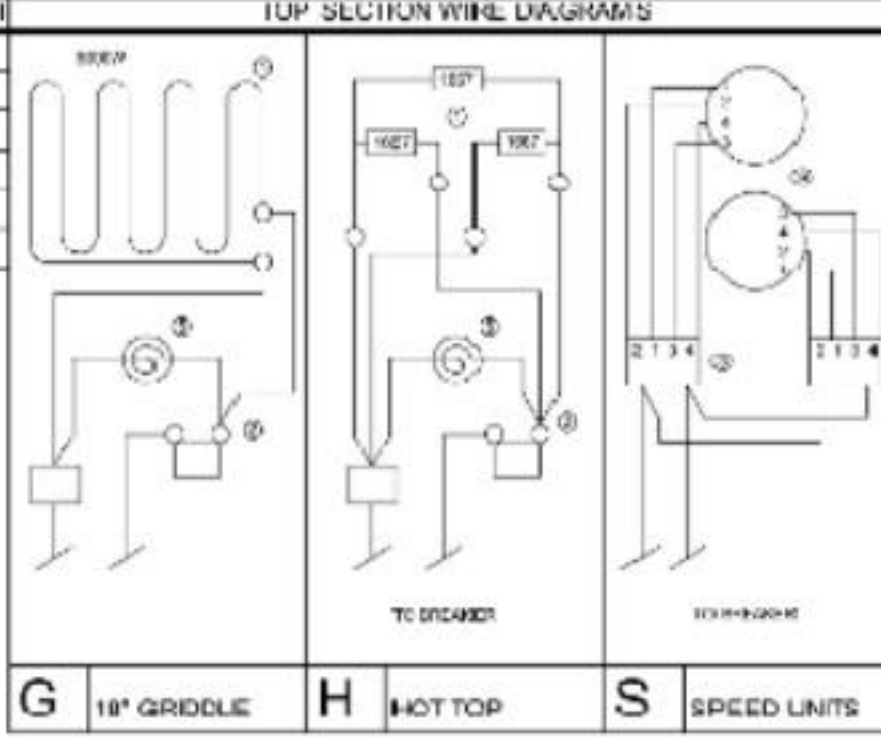
MODEL NUMBER	CONVECTION OVEN/RANGE ELECTRICAL DATA											
	LOADING				AMPS THREE PHASE						SINGLE PHASE	
	KW PER PHASE				208 VOLT			240 VOLT			208	240
	L1-L2	L2-L3	L1-L3	TOTAL	L1	L2	L3	L1	L2	L3	L1	L2
***-SS	5.3	5.2	5.2	15.7	43.7	43.7	43.3	37.9	37.9	37.5	N/A	N/A
***-HS	5.3	5.2	5.0	15.5	42.9	43.7	42.5	37.2	37.9	36.8	N/A	N/A
***-GS	5.3	6.0	5.2	16.5	43.7	47.1	46.7	37.9	40.8	40.5	N/A	N/A
***-SG	5.3	5.2	6.0	16.5	47.1	43.7	46.7	40.8	37.9	40.5	N/A	N/A
***-HH	5.3	5.0	5.0	15.3	42.9	42.9	41.6	37.2	37.2	36.1	N/A	N/A
***-GH	5.3	5.0	6.0	16.3	47.8	42.0	45.0	40.8	37.2	39.8	N/A	N/A



- JP11=HEAT
- JP12=H SP MOTOR
- JP13=L0 SP MOTOR
- JP14=OPT STEAM
- JP21=RTD
- JP25=FLUX SW
- JP37=ON-OFF
- GP3=CHASSIS GROUND
- GP4=CHASSIS GROUND
- JP41=ROSE CONNECTOR



MODEL DESIGNATION	TOP ARRANGEMENT	
	SEC-1	SEC-2
CCR30-SS & CMR30-SS	0	0
CCR30-HS & CMR30-HS	H	S
CCR30-GS & CMR30-GS	G	S
CCR30-HH & CMR30-HH	H	H
CCR30-GH & CMR30-GH	G	H



**IMPORTANT**  
REMOVE TOP WIRE FIRST AT DISCONNECT IN DOWN POSITION

CONNECTIONS		
3 PHASE		
L1	L2	L3
1,4,7	2,5,8	3,6

MODEL NUMBER	LOADING				AMPS THREE PHASE		
	KW PER PHASE				480 Volt		
	1-1,2	1-2,3	1-4,5	TOTAL	1,1	1,2	1,3
***-SS	5.3	5.2	5.2	15.7	18.9	18.9	18.9
***-HS	5.3	5.2	5.0	15.5	18.6	18.9	18.4
***-GS	5.3	6.0	5.2	16.5	18.9	20.4	20.2
***-SG	5.3	5.2	6.0	16.5	20.4	18.9	20.2
***-HH	5.3	5.0	5.0	15.3	18.6	18.6	18.0
***-GH	5.3	5.0	6.0	16.3	20.4	18.6	19.9

