

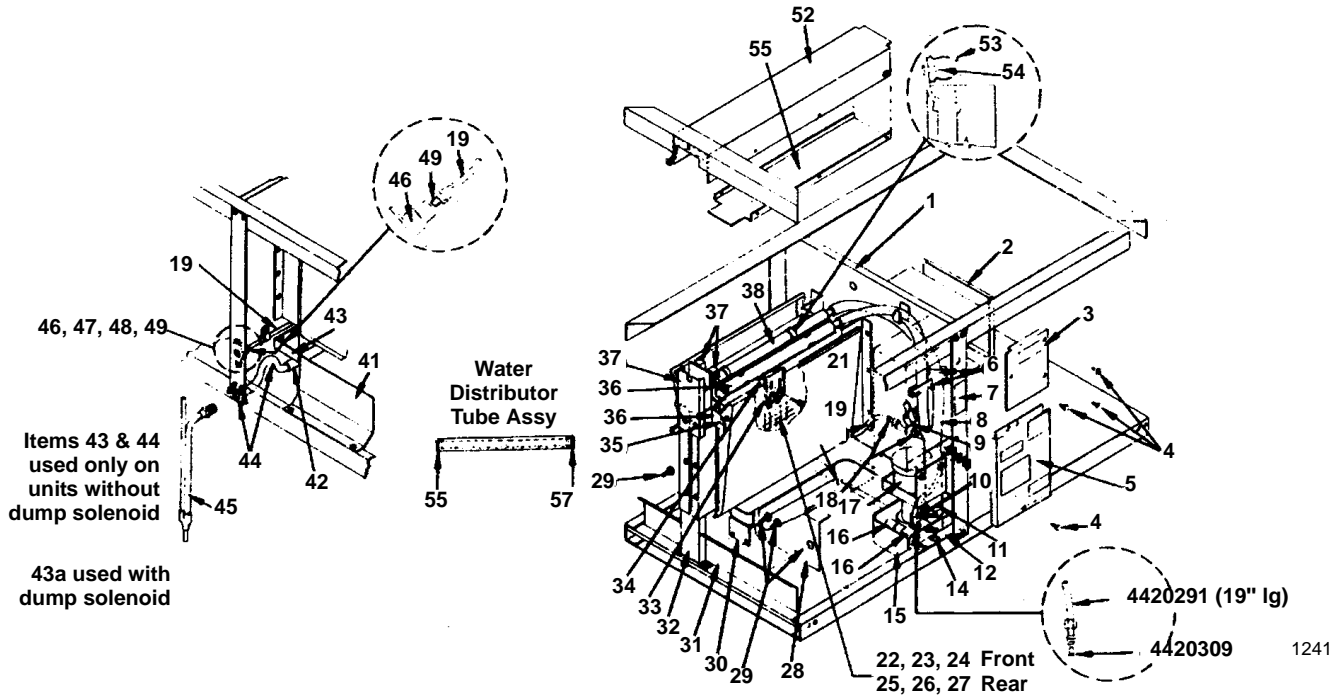


**Ice Machine Parts List for
Series G1200 Cuber Models**

R502 System

Manufactured February 1986 through February 1993

G1200



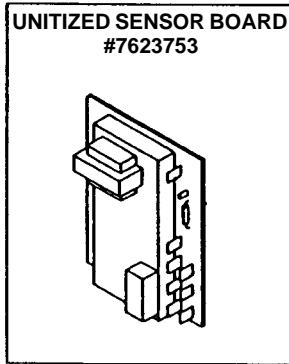
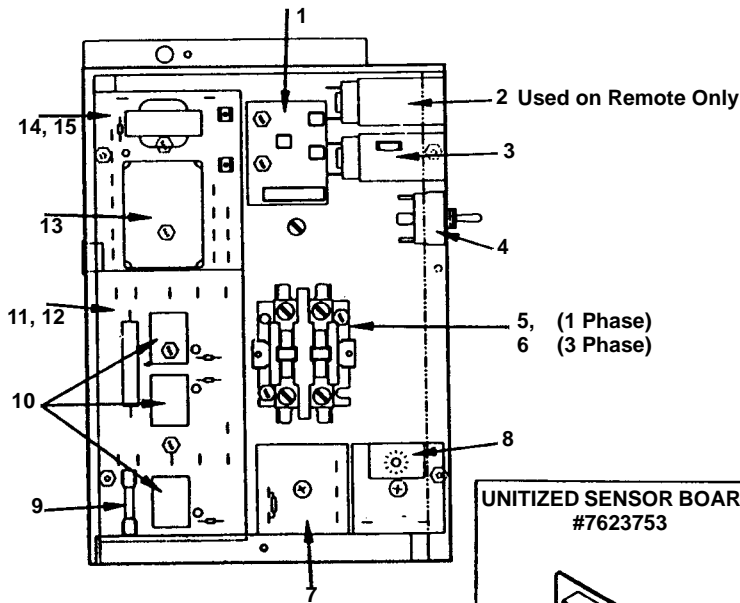
	PART NO.
1	Foam Tape † 9202509
2	Side Cover (start component box) . . No Longer Available
3	Front Cover (start component box) . . No Longer Available
4	10-24 x 3/8" Hex Head Screw † 5202109
5	Control Box Cover No Longer Available
6	Water Flow Clamp Assembly 7620543
7	Toggle Switch Label 8131243
8	Water Pump Discharge Tube (Using siphon) No Longer Available
	Discharge Tube (With dump valve) No Longer Available
9	Water Strainer † 1260033
10	Barbed Tee No Longer Available
11	Plastic Clamp (For mounting water discharge tube to water pump) † 5650539
12	Sump Trough Support Bracket Up to SN 870860000 No Longer Available
13	Sump Trough Support Bracket After SN 870860000 No Longer Available
14	#8-32 Wing Nut (For mounting items 12 & 16) † 5489139
15	Sump Trough Assembly Up to SN 870860000 No Longer Available
15a	Sump Trough Assembly After SN 870860000 No Longer Available
15b	Sump Plug † 4300529
16	Float Valve Assembly † 8369059
16a	Float Valve Mounting Bracket No Longer Available
17	Water Pump Assy † 7626013
18	Poly Flow Union (Used at water strainer only) No Longer Available
19	Poly Flow Water Supply Tube 1/4" OD 4420291
20	Drain Tube Bracket No Longer Available
21	Water Curtain Assembly (Front and rear) 6866414
22	Evaporator Assembly Front Reg. Cube No Longer Available
23	Evaporator Assembly Front Dice Cube † 7622409
24	Evaporator Assembly Front Half Dice Cube No Longer Available
25	Evaporator Assy Rear Reg. Cube No Longer Available
26	Evaporator Assy Rear Dice Cube † 7622419
27	Evaporator Assy Rear Half Dice Cube No Longer Available

	PART NO.
28	Front Water Curtain Stop No Longer Available
29	Thumbscrew (For mounting items 28, 30, 31) (4 per) † 5305049
30	Left Hand Sump Trough Support No Longer Available
31	Splash Shield No Longer Available
32	Evaporator Support Post No Longer Available
33	Ice Thickness Control † 7620613
34	Ice Thickness Control Bracket 6185814
35	Water Curtain Hanger (Pin on curtain) † 5650459
36	Water Curtain LH and RH Bracket Kit † 7621773
37	Water Distributor Tube Assembly (Front) 7623133
38	Water Distributor Tube Assembly (Rear) 7622523
39	Raceway Support No Longer Available
40	Bin Switch (2 per) † 6246419
41	Water Curtain Limiter Bracket No Longer Available
42	Tygon Drain Tube 5/8 ID x 7/8 OD † 4420383
43	Right Hand Sump Trough Support No Longer Available
44	Water Drain Overflow Tube Assembly No Longer Available
44a	Drain Fitting Used w/Dump Valve No Longer Available
45	Water Siphon Tube Assembly No Longer Available
46	Fresh Water Inlet Adapter 6002421
47	#8-32 x 1/2" Machine Screw † 5026249
48	#8-32 Hex Nut † 5429069
49	#8 Lockwasher † 5544599
50	Union (Used with item 46) 1360961
51	Bottom Channel No Longer Available
52	Top Channel No Longer Available
53	Mounting Clip (For water distributor tube) No Longer Available
54	Centering Pin (For water distributor tube) † 5013139
55	End Plug † 4408209
56	Tube Seal † 4408219
57	Dump Valve 208-230V 000001768
	Front Switch Protector No Longer Available
	Rear Switch Protector No Longer Available
	To replace siphon with water dump solenoid use Retrofit No Longer Available

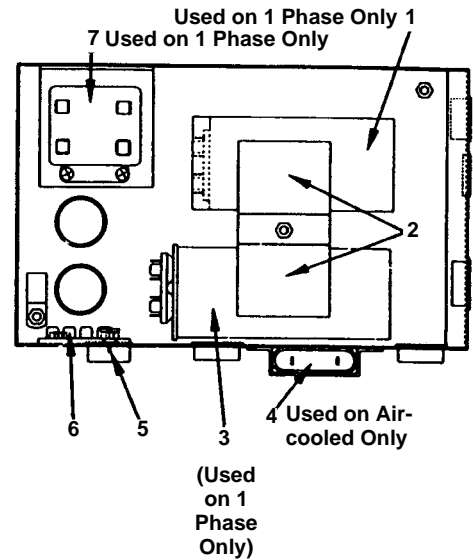
NOTE: FOR 50 HZ PARTS, SEE PAGE 3

G1200, CONTINUED

CONTROL BOX ASSEMBLY



START COMPONENT BOX ASSEMBLY



1 AND 3 PHASE CONTROL BOX ASSEMBLY

	PART NO.
1 Terminal Board	No Longer Available
2 Low Pressure Control Up to SN 870860000	No Longer Available
Low Pressure Control After SN 870860000	2355273
3 High Pressure Control Up to SN 870860000	2355213
High Pressure Control After SN 870860000	No Longer Available
High Pressure Control McDonald's Only	No Longer Available
4 Toggle Switch	† 2300849
5 Contactor (1 Phase)	No Longer Available
6 Contactor (3 Phase)	No Longer Available
7 Delay Timer 7 Seconds	† 2406353
8 Water Pump Delay Timer (Used with siphon)	† 2406423
Interval Timer (Used with dump valve)	† 2406433
9 Fuse (Pkg. of 6) 5 Amp	† 2510379
10 Relay (3 per)	No Longer Available
11 Relay Board	No Longer Available
12 Mounting Track (relay board)	No Longer Available
13 Ice Sensor Module*	Use † 7623753
14 Transformer Board*	Use † 7623753
15 Mounting Track (For transformer board)	4408013
16 Water Shield (Used when stacking)	No Longer Available
*Unitized Sensor Board	† 7623753

(Used to replace both the transformer board and sensor module)

1 PHASE START COMPONENT BOX ASSEMBLY

(Also Used On 3 Phase, Less Start Components)

	PART NO.
1 Start Capacitor	See Page 9
2 Capacitor Mounting Bracket	No Longer Available
3 Run Capacitor	See Page 9
4 Fan Motor Capacitor (Air-cooled only)	No Longer Available
5 Ground Screw #10-32	† 5027019
6 Terminal Board	No Longer Available
7 Start Relay	See Page 9

G1200 50 HZ PARTS

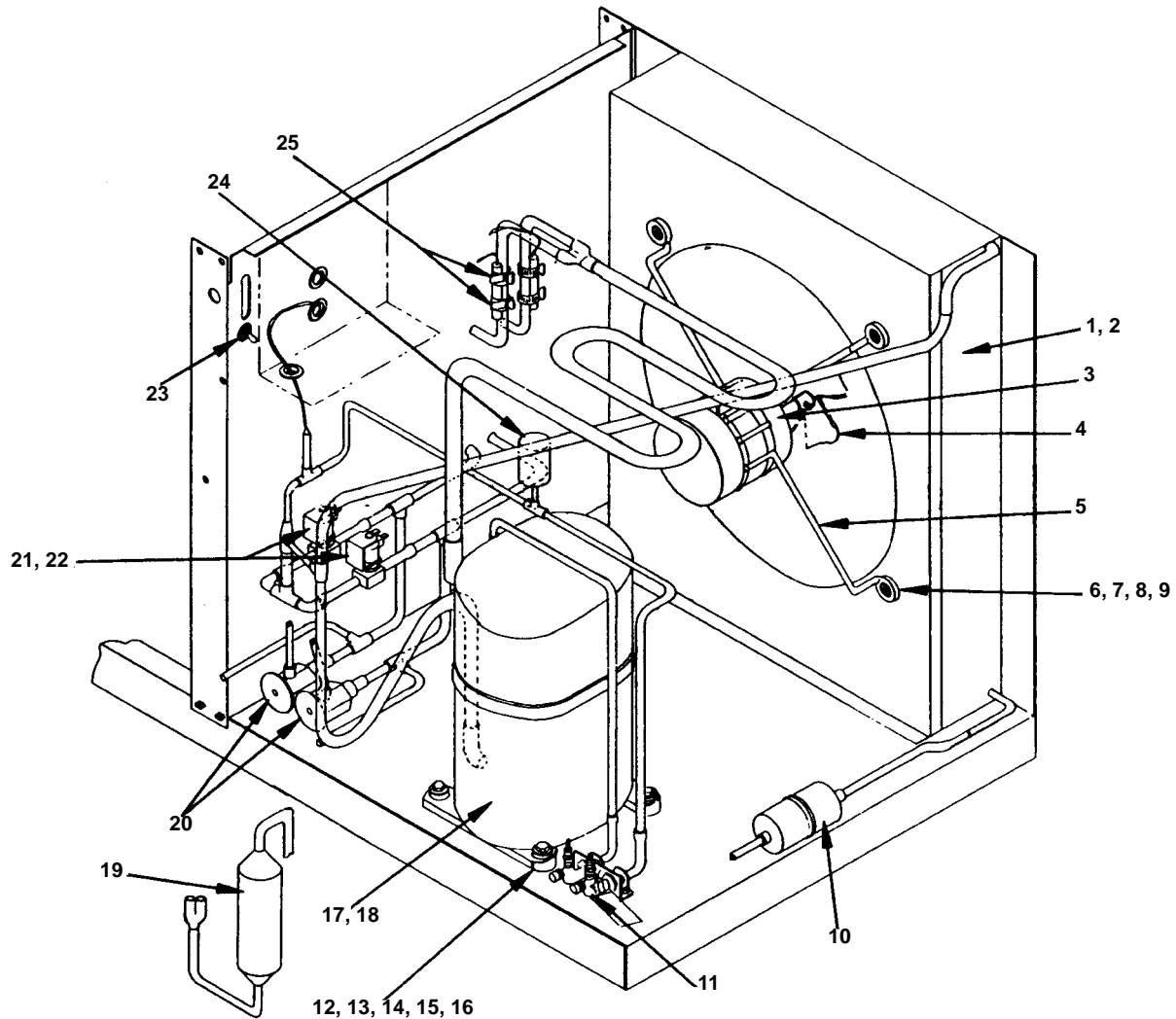
	PART NO.
Compressor 50 Hz 1 Phase 220-240V	† 7603303
Starting Relay	See Page 9
Start Capacitor	See Page 9
Run Capacitor	See Page 9
Compressor 50 Hz 3 Phase 380-415V	No Longer Available
Water Pump with Mounting Bracket & Cover	† 7626013
Unitized Sensor Board	No Longer Available

REMAINING PARTS ARE SAME AS USED ON 60 HZ CUBER.

1242

† Refer to Cross Reference Guide

G1200 COMPRESSOR COMPARTMENT AIR-COOLED



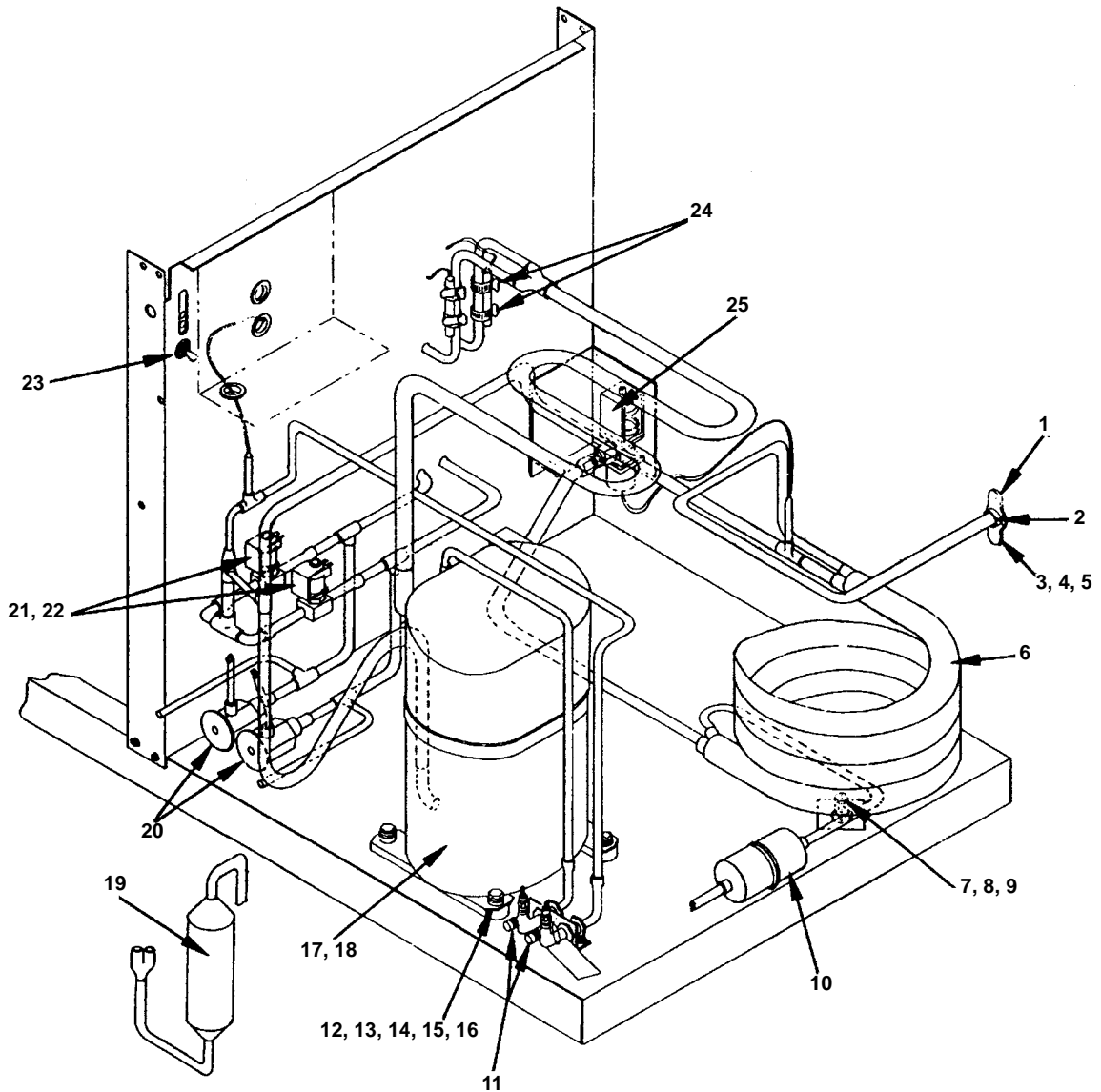
1243

PART NO.		PART NO.	
1	Air Condenser (With shroud)	No Longer Available	
2	Air Condenser (Only)	No Longer Available	
3	Fan Motor	2412433	
4	Fan Blade	No Longer Available	
5	Hold Down Bracket (For fan motor)	3006843	
6	1/4 x 1.75 Screw	† 5033589	
7	1/4 Lockwasher	† 5545109	
8	1/4 Flat Washer	† 5573059	
9	Grommet & Nut	† 5429559	
10	Drier	† 8930279	
11	High and Low Side Process Valve	† 8373109	
12	Grommet (4 per)	† 8503069	
13	Sleeve (4 per)	† 8503949	
14	3/8 ID Flat Washer (4 per)	† 5573099	
15	3/8 Lockwasher	† 5545149	
16	3/8-16 x 1-3/4" Screw	No Longer Available	
17	Compressor 1 Phase 230V (For electrical starting components, See Page 9)	† 7603283	
17a	Compressor Crankcase Heater (for Bristol)	No Longer Available	
18	Compressor 3 Phase 230V (For electrical starting components, See Page 9)	† 7603293	
19	Receiver	000008892	
20	Expansion Valve	† 7622513	
21	Solenoid Valve Assembly w/Coil (Hot gas)	7630101	
22	Solenoid Valve Coil Only Alco	† 2404483	
23	Toggle Switch	† 2300849	
24	Fan Cycle Control	2301153	
25	Worm Drive Clamp (For expansion valve bulb)	† 5650529	
	Air Baffle	No Longer Available	

NOTE: FOR 50 HZ PARTS, See PAGE 3

† Refer to Cross Reference Guide

G1200 COMPRESSOR COMPARTMENT WATER-COOLED



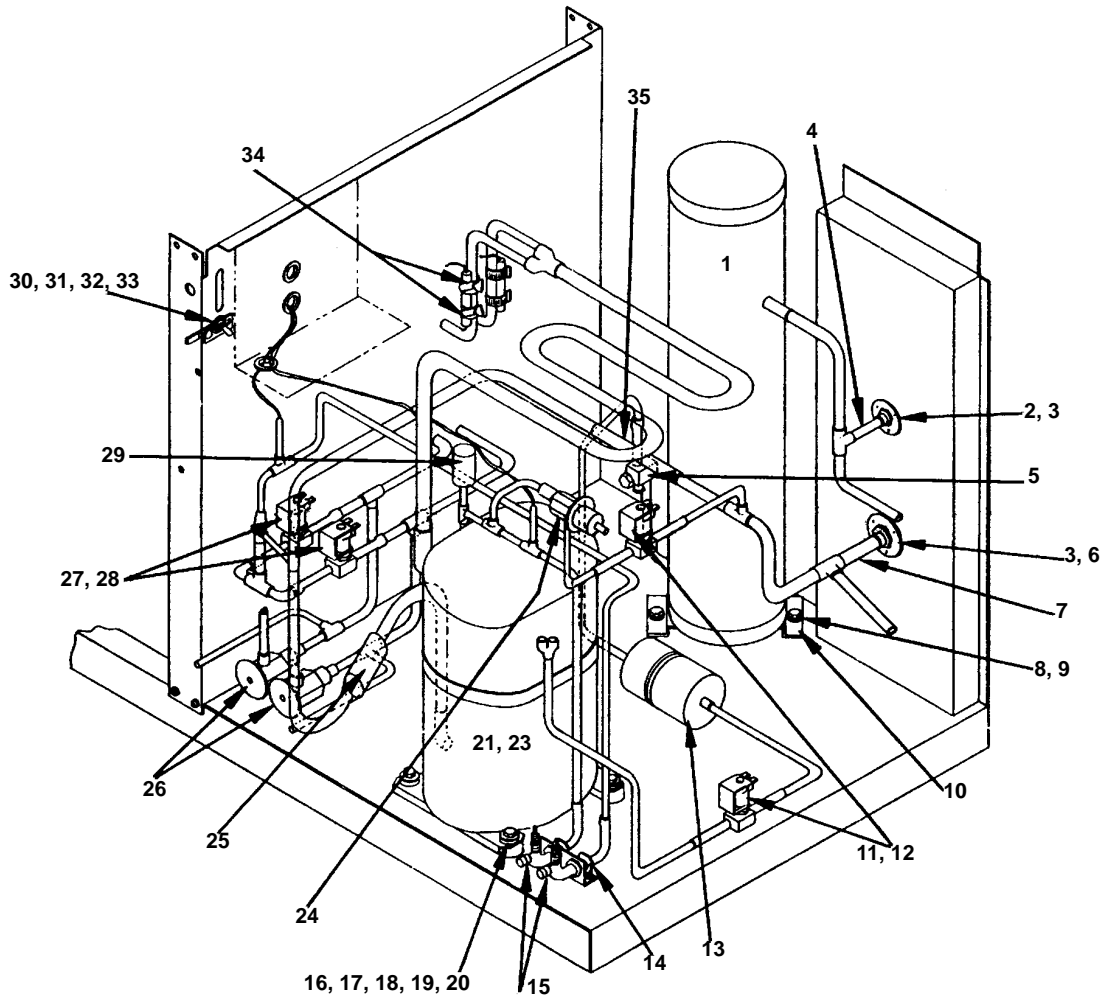
1244

	PART NO.		PART NO.
1	Water Adapter	1706021	
2	Flush Bushing	† 1300059	
3	#8-32 x 1/2" Mounting Screw	† 5026249	
4	#8 Lockwasher	† 5544599	
5	Hex Nut	† 5429069	
6	Water Condenser	No Longer Available	
7	1/4 - 20 x 5/8" Screw	5032389	
8	9/32 Flat Washer	† 5573179	
9	#8 Lockwasher	† 5544599	
10	Drier	† 8930279	
11	High and Low Side Process Valve	† 8373109	
12	Grommet	† 8503069	
13	Sleeve	† 8503949	
14	3/8 ID Flat Washer	† 5573099	
15	3/8 Lockwasher	† 5545149	
16	3/8-16 x 1-3/4" Screw	No Longer Available	
17	Compressor 1 Phase 230V (For electrical starting components, See Page 9)	† 7603283	
			17a Compressor Crankcase Heater (for Bristol)
			No Longer Available
			18 Compressor 3 Phase 230V (For electrical starting components, See Page 9)
			† 7603293
			19 Receiver
			000008892
			20 Expansion Valve
			† 7622513
			21 Solenoid Valve Assembly w/Coil (Hot gas)
			7630101
			22 Solenoid Valve Coil (Only) (For hot gas valve 7630101) Alco
			† 2404483
			23 Toggle Switch
			† 2300849
			24 Worm Drive Clamp (For mounting expansion valve bulb)
			† 5650529
			25 Water Regulator Valve
			† 8372069

NOTE: FOR 50 HZ PARTS, See PAGE 3

† Refer to Cross Reference Guide

G1200 REMOTE UP TO SN 870860000



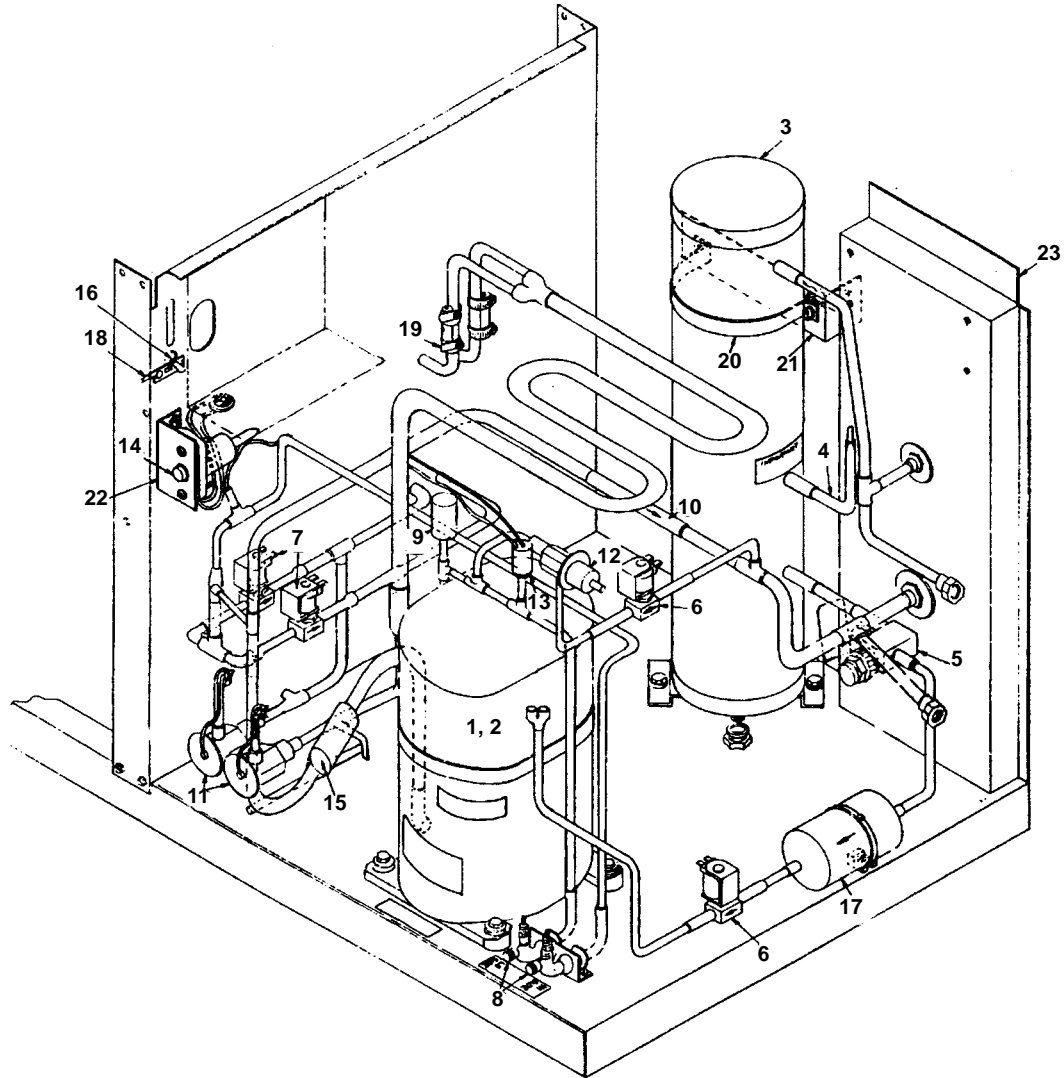
1245

	PART NO.	PART NO.	
1	Receiver No Longer Available	20	3/8"-16 x 1-3/4" Screw No Longer Available
2	Male Coupling Mounting Flange 1/2" 8360183	21	Compressor 1 Phase 230V (For electrical starting components, See Page 9) † 7603283
3	#10-24 x 3/8" Hex Head Screw (Mounting items 2 & 6) † 5202109	22	Compressor Crank Case Heater No Longer Available
4	Male Coupling Assembly 3/8" No Longer Available	23	Compressor 3 Phase 230V (For electrical starting components, See Page 9) † 7603293
5	Service Valve (For receiver) † 8373169	24	Harvest Pressure Expansion Valve † 8367533
6	Male Coupling Mounting Flange 3/8" 8360173	25	Heater (Discharge line) No Longer Available
7	Male Coupling Assembly 1/2" No Longer Available	26	Expansion Valve † 7622513
8	3/8"-16 x 7/8" Screw (Mounting receiver bracket) No Longer Available	27	Solenoid Valve Assembly w/Coil (Hot gas defrost) 7630101
9	3/8" Lockwasher (Mounting receiver bracket) 5545149	28	Solenoid Valve Coil (Only) (Hot gas defrost) for solenoid valve 7630101 Alco † 2404483
10	Mounting Bracket (For receiver) No Longer Available	29	Suction Pressure Switch No Longer Available
11	Solenoid Valve Assembly w/Coil (For liquid line pump down or harvest assist) 208-230V/50-60 Hz (Danfoss) 7630081	30	Toggle Switch † 2300849
12	Solenoid Valve Coil (Only) (For solenoid valve 7630081) Alco 2404483	31	Toggle Switch Lever No Longer Available
13	Drier † 8930279	32	Toggle Switch End Cap No Longer Available
14	Palnut (Mounting processing valve) † 5475039	33	Brass Stud (Mounting item 31) † 5013089
15	High and Low Side Processing Valve † 8373109	34	Worm Drive Clamp (Mounting expansion valve bulb) † 5650529
16	Grommet (4 per) † 8503069	35	Magni-check Valve † 8373159
17	Sleeve (4 per) † 8503949		
18	3/8" Flat Washer (4 per) † 5573099		
19	3/8" Lockwasher (4 per) † 5545149		

NOTE: FOR 50 HZ PARTS, See PAGE 3

† Refer to Cross Reference Guide

G1200 REMOTE AFTER SN 870860000

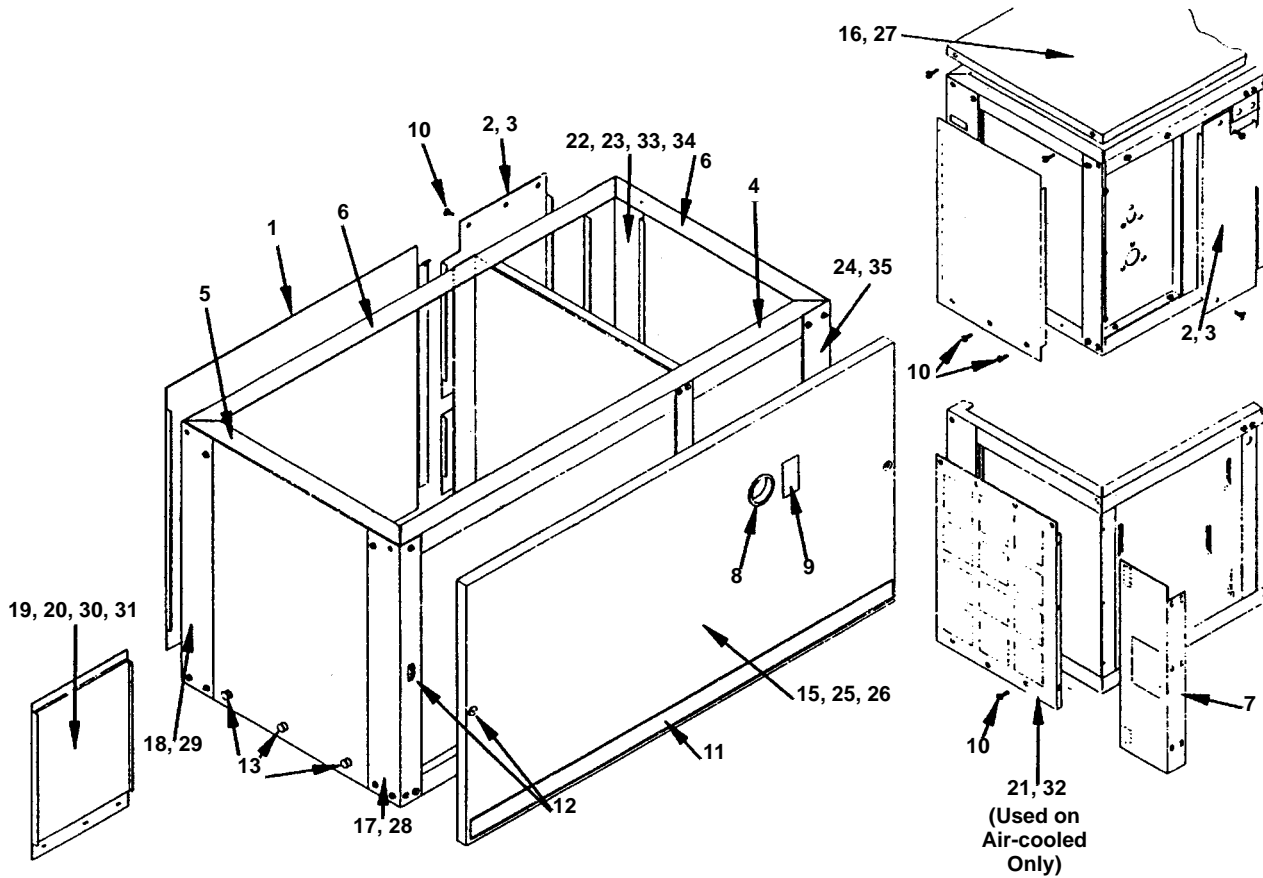


1246

		PART NO.
1	Compressor, 1 Phase 230V	† 7603283
2	Compressor, 3 Phase 230V	† 7603293
3	Receiver	No Longer Available
4	Soft Plug Weldment	No Longer Available
5	Receiver Service Valve	† 8373169
6	Solenoid Valve, Harvest & Liquid Line 208-230V/50-60 Hz (Danfoss)	† 7630081
7	Solenoid Valve, Hot Gas	7630101
8	Process Valve	† 8373109
9	Suction Pressure Switch	No Longer Available
10	Magni-check Valve	† 8373159
11	Expansion Valve	† 7622513
12	Harvest Pressure Expansion Valve	† 8367533
13	Low Pressure Control	2355273
14	High Pressure Control	No Longer Available
15	Heater	No Longer Available
16	Toggle Switch	† 2300849
17	Drier	† 8930279
18	Toggle Switch Lever	No Longer Available
19	Worm Drive Clamp	† 5650529
20	Receiver Strap	No Longer Available
21	Receiver Strap Mounting Bracket	No Longer Available
22	Mounting Bracket High Pressure Control	No Longer Available
23	Remote Coupling Mounting Panel	No Longer Available

† Refer to Cross Reference Guide

G1200 OUTER PANELS



1247

COMMON PARTS

	PART NO.
1 Back Panel Assembly	No Longer Available
2 Back Panel -Remote.	No Longer Available
3 Back Panel -Water-cooled	No Longer Available
4 Front Rail	No Longer Available
5 Left Hand End Rail	No Longer Available
6 Rear & Right Hand Rail	No Longer Available
7 Air Baffle - Air-cooled	No Longer Available
8 Bushing (Used on remote only)	† 2500139
9 Toggle Switch Label	8131243
10 Screw 10-24 x 3/8" for Mounting Outer Panels	† 5202109
11 Label Trim for Front Panel	8132013
12 Mounting Screw & Cage Nut (Pkg. of 2).	7622263
12a Spacer For Front Panel.	† 3718199
13 Thumbscrew (Used on left hand end panel only)	No Longer Available
14 Cartoning Assembly	† 7108259

OUTER PANELS - FAWN

15 Front Panel - Air-cooled	No Longer Available
Front Panel - Water-cooled.	No Longer Available
Front Panel - Remote	No Longer Available
16 Top Cover	No Longer Available
17 Left Hand Front Column Assembly. . .	No Longer Available
18 Left Hand Rear Column Assembly . .	No Longer Available
19 Left Hand End Panel - Air-cooled . .	No Longer Available

PART NO.

20 Right Hand & Left Hand End Panel Remote & Water.	No Longer Available
21 Right Hand End Panel - Air-cooled . .	No Longer Available
22 Right Hand Rear Column Water-cooled	No Longer Available
23 Right Hand Rear Column - Remote .	No Longer Available
24 Right Hand Front Column.	No Longer Available

OUTER PANELS - STAINLESS STEEL

25 Front Panel - Air-cooled	No Longer Available
Front Panel - Water-cooled.	No Longer Available
Front Panel - Remote	No Longer Available
26 Front Panel (McDonald's) Air-cooled Front Panel (McDonald's) Water-cooled	No Longer Available
Front Panel (McDonald's) Remote . .	No Longer Available
27 Top Cover	No Longer Available
28 Left Hand Front Column Assembly. .	No Longer Available
29 Left Hand Rear Column Assembly . .	No Longer Available
30 RH & LH End Panel - Remote & Water	No Longer Available
31 Left Hand End Panel - Air-cooled . .	No Longer Available
32 Right Hand End Panel - Air-cooled . .	No Longer Available
33 Right Hand Rear Column Water-cooled	No Longer Available
34 Right Hand Rear Column - Remote .	No Longer Available
35 Right Hand Front Column.	No Longer Available

PART NO.

† Refer to Cross Reference Guide

COMPRESSOR COMPONENTS FOR G1200

230V/60 HZ/1 PH

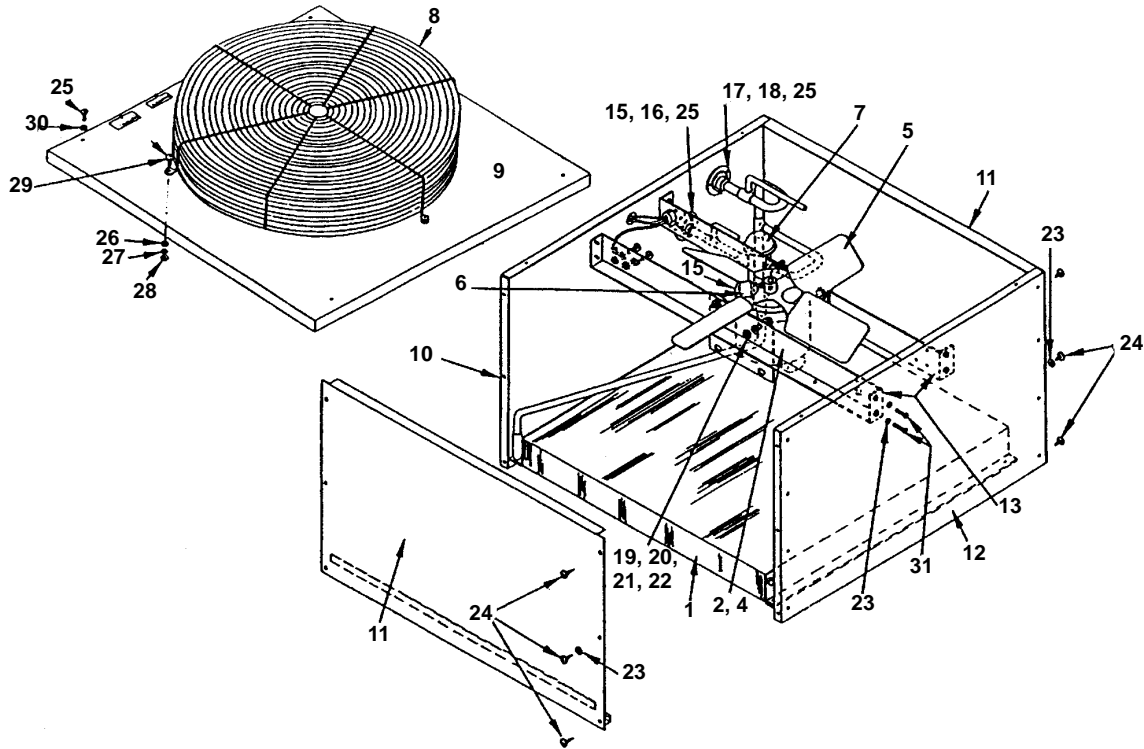
Compressor Model Number	Start Relay	Start Capacitor	Run Capacitor
Tecumseh AV5542E	No Longer Available	† 8503163	† 000000028
Bristol	No Longer Available	† 8503853	† 2010133
Tecumseh AVA7524ZXN	2007519	8505513	000001395
Copeland	2007563	8505133	000000028

230V/50 HZ/1 PH

Compressor Model Number	Start Relay	Start Capacitor	Run Capacitor
Bristol	No Longer Available	† 8503853	† 2010133
Tecumseh	2007529	8505513	† 000000028
Copeland	2007533	8505133	000000028

† Refer to Cross Reference Guide

REMOTE CONDENSER AC1295

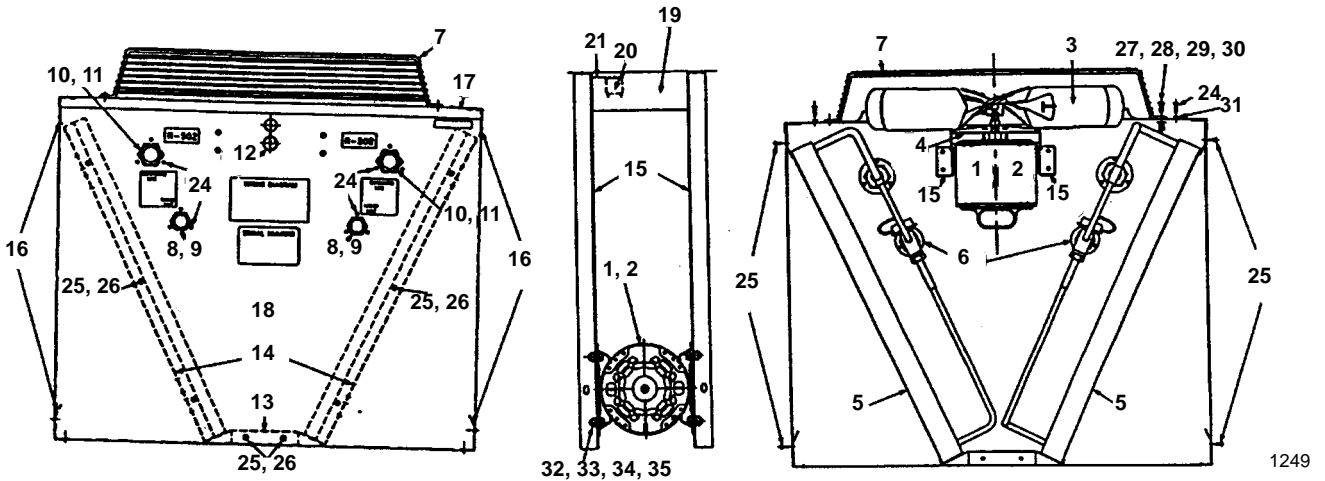


1248

	PART NO.
1 Air Condenser	† 8850899
2 Fan Motor, 60 Hz 230V	† 7629413
3 Run Capacitor (Emerson)	8503353
3a Run Capacitor (Magnatec)	No Longer Available
4 Fan Blade	2416113
5 Fan Motor, 50 Hz 230V	† 7629413
6 Rain Shield	2415053
7 Head Pressure Control	† 8368069
8 Fan Grill	3400643
9 Top Cover	† 6017751
10 Rear Panel	No Longer Available
11 Panel, Right & Left End	No Longer Available
12 Front Panel	† 6017721
13 Bracket, Fan Motor & Base	† 6017681
14 Legs (Condenser Mounting)	† 6017691
15 Coupling Mounting Flange	8360183
16 Coupling Assembly 3/8 OD	No Longer Available
17 Coupling Mounting Flange	8360173
18 Coupling Assembly 1/2 OD	No Longer Available
19 Lockwasher 5/16 Split	† 5573139
20 Flatwasher	† 5573099
21 Hex Nut 5/16-18	† 5429759
22 Screw 5/16-18 Hex Head	† 5035659
23 Lockwasher #8	† 5544599
24 Screw #8-1/2	† 5121539
25 Screw #10-24 x 5/8	† 5202059
26 Hex Nut 1/4-20	† 5429529
27 Flatwasher 1/4"	† 5573049
28 Lockwasher 1/4" Split	† 5545119
29 Screw 1/2-20 x 5/8	† 5033459
30 Lockwasher #10	† 5544649
31 Screw, #8-32 x 1/2	† 5026249
32 Female Coupling Kit	0700663

† Refer to Cross Reference Guide

REMOTE CONDENSER DC1296A



1249

	PART NO.
1 Fan Motor, 115V/60 Hz	† 7629423
2 Fan Motor, 230V/50-60 Hz	† 7629413
3 Fan Blade	2416113
4 Rain Slinger	2415053
5 Air Condenser DC1296A (Uses 2)	† 8850899
6 Headmaster Control - R502	† 8368069
7 Fan Guard	3400643
8 Male Coupling, 1-1/8 x 3/8 OD	No Longer Available
9 Coupling Flange for Male Coupling, 1-1/8" x 3/8 OD	8360183
10 Male Coupling, 1-7/16 - 16 x 1/2 OD	No Longer Available
11 Coupling Flange	8360173
12 Hole Plug for 7/8" Hole	4301463
13 Base	6017791
14 Condenser Mounting Angle	6017771
15 Base Bracket for Fan Mounting	† 6017681
16 Support Bracket	† 6017781
17 Top Cover	6017891
18 Front Panel	No Longer Available
19 Electrical Box Cover	† 6017761
20 Relay	No Longer Available
21 Relay Mounting Bracket	No Longer Available
22 Transformer (Not shown)	No Longer Available
23 Electrical Junction Box (Not shown)	2515013
24 Screw, #10-24 x 0.62	† 5202059
25 Screw, #8 x 0.50	† 5121539
26 Lockwasher, #8	† 5544599
27 Screw, 0.25 x 0.62	† 5033459
28 Lockwasher, 0.25 Split SS	† 5545119
29 Washer - Flat 0.25 SS	† 5573049
30 Nut 0.25-20 Steel Hex	† 5429529
31 Lockwasher #10	† 5544649
32 Screw, 3118 x 0.62 Hex Head	† 5035659
33 Nut 0.31-18 Steel Hex Head	† 5429759
34 Washer, Flat 0.31 ID	† 5573099
35 Lockwasher 0.31 Split Zinc	† 5573139
36 Back Panel (Not shown)	† 6017881

NOTE: Items 20, 21, 22 and 23 are used only when the optional K00095 Relay/Transformer Kit has been installed.

† Refer to Cross Reference Guide

INTENTIONALLY LEFT BLANK