



Manitowoc
Foodservice
Parts Manual

For more Parts Information:

<https://manitowocfsg.sysonline.com/Default.aspx>

TABLE OF CONTENTS

Manitowoc Foodservice [Updated: Sep. 30, 2013]

Manitowoc - Ice & Related

Parts Catalog

Ice Machine

Indigo Series

Indigo Model - Prison

i0522P Indigo

i0522P Control Box 1

i0522P Evaporator Compartment - Common Components 3

i0522P Refrigeration Components - Common Components 5

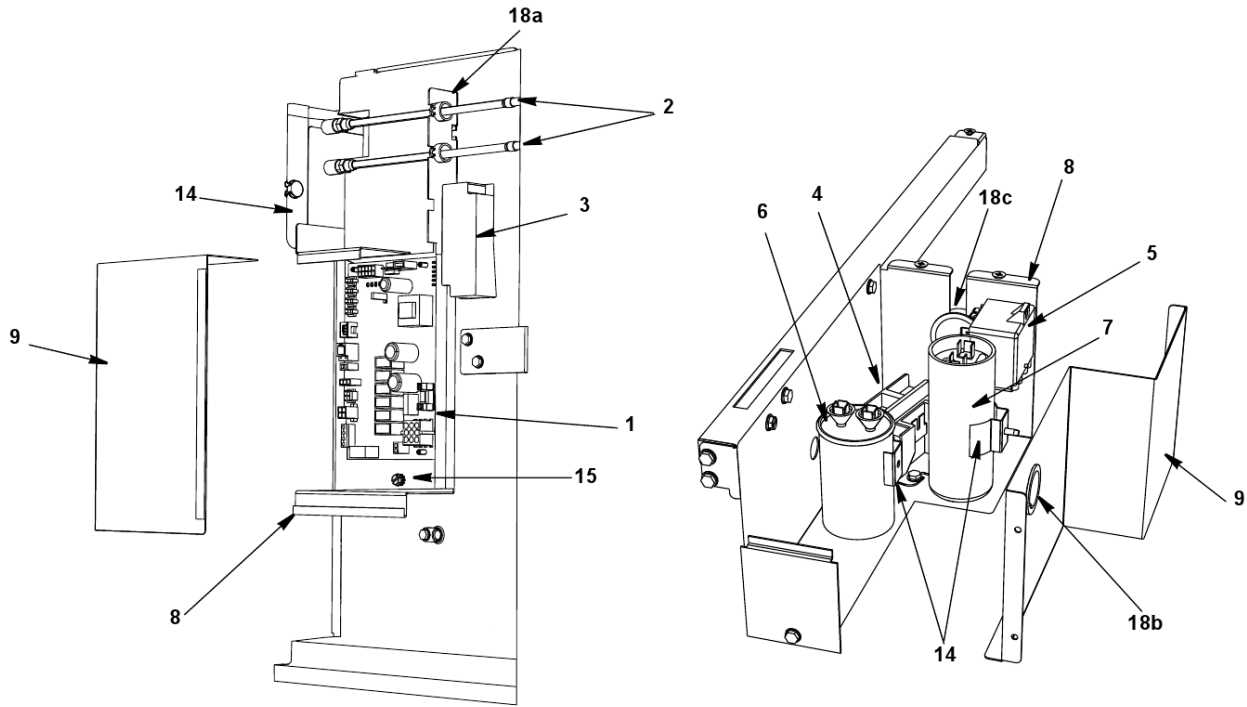
i0522P Refrigeration Compartment – Air-cooled 8

i0522P Refrigeration Compartment – Water-cooled 10

i0522P Panels 12

i0522P Indigo

I0522P CONTROL BOX



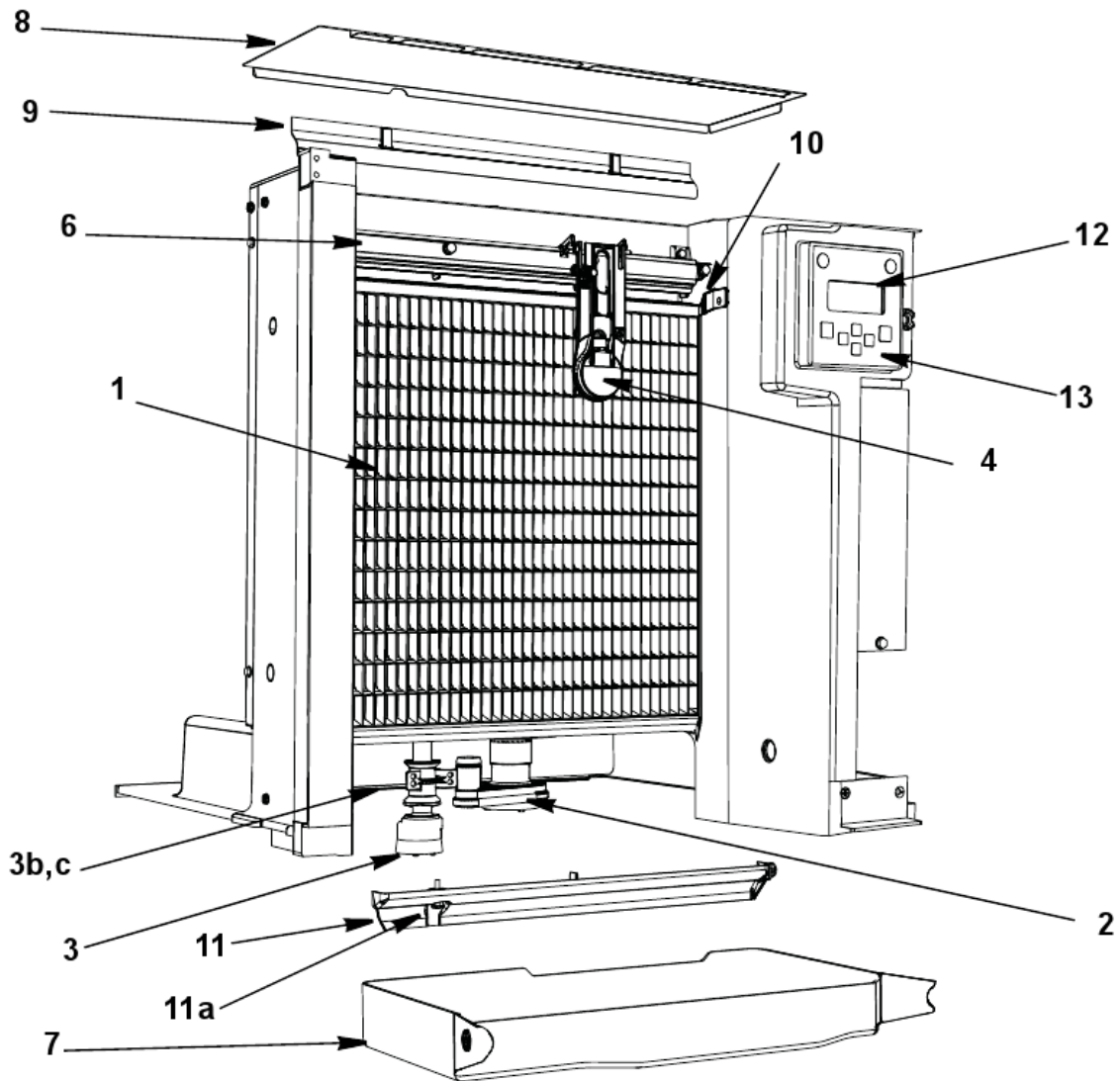
i0522P Indigo

I0522P CONTROL BOX

#	PART #	DESCRIPTION	QTY	Note
1	000008309	Control Board		
1a	000009181	8 amp Ceramic Fuse - Mounted on Control Board		
2	8373263	Refrigeration Service Valve Assembly		
3	K00424	LuminIce		
4		Contactator		
4a	2006589	Contactator - 115V/60 Hz/1 Ph		
4b	2006599	Contactator - 230V/50-60 Hz/1 Ph		
5		Start Relay		
5a	2002053	Start Potential Relay - 115V/60 Hz/1 Ph		
5b	2007929	Start Potential Relay - 208-230V/50-60 Hz/1 Ph		
6		Run Capacitor		
6a	2010143	Run Capacitor - 115V/60 Hz/1 Ph		
6b	000007675	Run Capacitor - 208-230V/50-60 Hz/1 Ph		
6c	8504003	Run Capacitor - 208-230V/50-60 Hz/1 Ph		
7		Start Capacitor		
7a	8505773	Start Capacitor - 115V/60 Hz/1 Ph		
7b	8503833	Start Capacitor - 208-230V/50-60 Hz/1 Ph		
8	000007927	Control Board Box		
9	000007928	Control Board Box Cover		
10	000008623	Start Components Box		
11	6069681	Start Components Box Top Cover		
12	000008620	Start Components Box Side Cover		
13	4302253	Control Board Mounting Supports		
14	5005303	Capacitor Mounting Brackets		
15	5202169	Screw - #10-24 x 0.50" Ground		
15a	5573209	Star Washer		
16	5202069	Screw - #10-24 x 0.50" HEX		
17	5573209	Star Washer		
18		Control Box Bushings		
18a	2502189	Bushing - 0.625"		
18b	2500019	Bushing - 1.187"		
18c	2500139	Bushing - 1.5"		
19		Control Box Wiring Harness		
19a	000007839	Control Box Wiring Harness - 115V/60 Hz/1 Ph		
19b	000007840	Control Box Wiring Harness - 230V/60 Hz/1 Ph		
19c	000007841	Control Box Wiring Harness - 230V/50 Hz/1 Ph		
20	2008523	Compressor Compartment Wiring Harness		

i0522P Indigo

I0522P EVAPORATOR COMPARTMENT - COMMON COMPONENTS



i0522P Indigo

I0522P EVAPORATOR COMPARTMENT - COMMON COMPONENTS

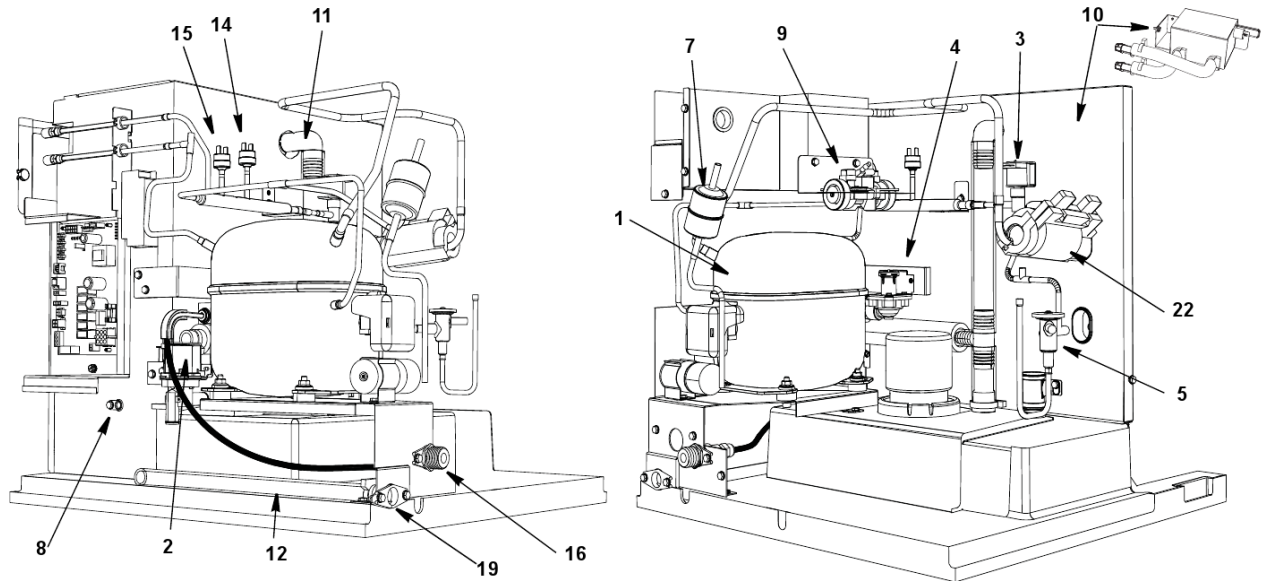
#	PART #	DESCRIPTION	QTY	Note
1		Evaporator Assembly		
1a	000011339	Evaporator - Dice Cube		
1b	000011340	Evaporator - Half Dice Cube		
1c	000011341	Evaporator - Regular Cube		
2		Water Pump		
2a	2008929	Water Pump - 115V/60 Hz		
2b	2008939	Water Pump - 230V/60 Hz		
2c	2008949	Water Pump - 230V/50 Hz		
3	000007052	Water Level Probe		
3a	000007099	Wire - Control Box to Probe		
3b	000007053	Water Level Probe - Holder		
3c	5202099	Screw - #10-24 x 0.50" PHIL		[1]
4	000008660	Ice Thickness Control Probe		
5	4011189	Water Curtain		
6	7602789	Water Distribution Tube - 22" Models		
6a	5004649	O-Rings		[2]
7		Water Trough - See Note for Serial Break		
7a	4009149	Water Trough - without Tabs		[3]
7b	000010336	Water Trough - with Tabs		[4]
8	000009188	Foodzone Seal Panel		
9	6065389	Evaporator Top Filler Panel		
9a	6063339	Bracket - Top Filler Panel		
9b	5202099	Screw - #10-24 x 0.50" PHIL		
10	7602799	Evaporator Top Frame Assembly		
11	7602213	Water Diverter - 30" Models		
11a	5305123	Thumbscrew SS - #8-32 x 0.44"		
12	000006728	LCD Display		
13	000007974	Touch Pad with Housing		
14	000007828	LCD Wiring Harness - 20" Long		
15	000007746	Touch Pad/Housing Mounting Bracket		
16	5004799	Thumbscrew SS - #8-32 x 0.375"		[5]
16a	5004629	O-Ring - 0.125" ID		
17	5004619	Screw - #12-16 x 0.687"		
18	5004659	Water Pump Base O-Ring - 4.00" ID		
19	5004679	Water Pump Outlet O-Ring - 0.875" ID		

PART NOTES:

- [1] - Mount Water Level Probe Holder
- [2] - Back of Distribution Assembly
- [3] - \water trough.jpg" width=311 height=143>
- [4] - \water trough with tabs.jpg" width=355 height=194>
- [5] - Water Distribution Tube Mounting

i0522P Indigo

I0522P REFRIGERATION COMPONENTS - COMMON COMPONENTS



i0522P Indigo

I0522P REFRIGERATION COMPONENTS - COMMON COMPONENTS

#	PART #	DESCRIPTION	QTY	Note
1		Compressor		
1a	000003919	Compressor - Danfoss SC15MLX.2 - 115V/60 Hz/1 Ph		
1b	000003920	Compressor - Danfoss SC15MLX.2 - 208-230V/50-60 Hz/1 Ph		
2		Water Dump Valve		[1]
2a	2008709	Dump Valve 115V/60 Hz		
2b	2008719	Dump Valve 208-230V/50-60 Hz		
2c	6058459	Water Dump Valve Mounting Bracket		
2d	4420383	Clear Tubing - 0.625" ID		
3		Harvest Valve		
3a	000007029	Harvest Valve Including 115V/60 Hz Electrical Coil		
3b	000005156	Danfoss Solenoid Valve Coil Only - 115V/60 Hz		[2]
3c	000007028	Harvest Valve Including 208-230V / 50-60 Hz Electrical Coil		
3d	000005157	Danfoss Solenoid Valve Coil Only - 230V/50-60 Hz		[3]
4		Water Inlet Valve		
4a	000000375	Water Inlet Valve - 115V/60 Hz/1 Ph		
4b	000000376	Water Inlet Valve - 208-230V/50-60 Hz		
4c	000007594	Water Inlet Valve Bracket		
5	7602903	Expansion Valve		
5a	4000363	Valve Insulation Boot - Body		
5b	4007203	Valve Insulation Boot - Bulb		[4]
6	000008310	Thermistor with Spring Clips		
7	8930259	Drier		
8	000007888	Magnetic Bin Switch		
8a	000007410	Bin Switch Wiring Harness		
9		Air Assist		
9a	000007222	Air Assist - 115V/60 Hz		
9b	000007223	Air Assist - 230V/50-60 Hz		
9c	4011739	Air Manifold		[5]
9d	000006489	Air Assist Bracket		
9e	3001453	Air Assist Nozzle		
10	K00424	LuminIce		
10a	K00425	LuminIce Bulb		
10b	000007409	LuminIce Wiring Harness		
10c	000007990	Bulkhead Fitting 2.25"		
10d	000008269	Bulkhead Fitting 2.75"		
11	000010896	Insulated Tube		[6]
11a	5650603	Snap Clamp - 1.0" ID		
11b	5650703	Snap Clamp - 0.799"/0.899" ID		
12	000001382	Vinyl Tubing 0.625" ID		[7]
12a	6038831	Insulation 0.88 ID X 0.25W X 13.50L		
12b	5650709	Snap Clamp - 0.799"/0.899" ID		
13	000008364	Manifold Strainer		

i0522P Indigo

I0522P REFRIGERATION COMPONENTS - COMMON COMPONENTS

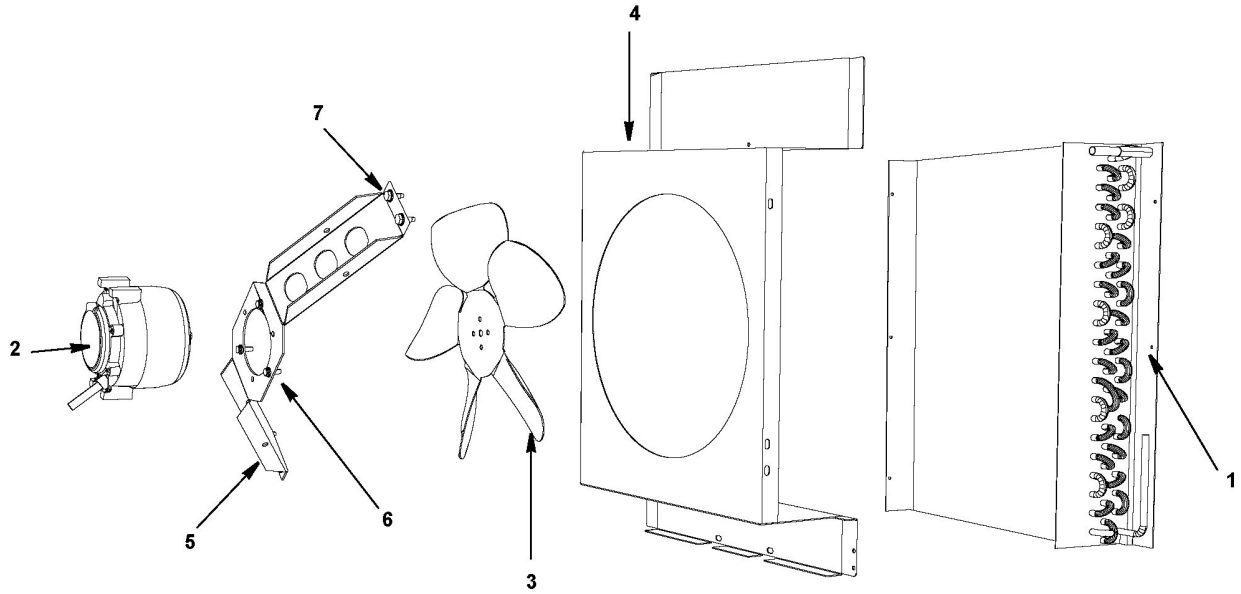
#	PART #	DESCRIPTION	QTY	Note
13a	6058571	Bracket		
14	2001243	High Pressure Cut-out Control		
15	2001263	Fan Cycling Control - 200-250 psig		[8]
16	8706093	Female Wing Adapter - 0.375"		
16a	1360961	Male Connector		
17	4010439	Tubing - Water Inlet Valve		[9]
17a	00000288	Clip-on Tubing Elbow		[10]
18	1360989	Connector - Water Inlet Valve		
19	8706133	Female Wing Adapter - 0.50"		
20		Compressor Mounting		
20a	6060269	Compressor Mounting Base		
20b	8503069	Mounting - Rubber Grommet		
20c	8503949	Mounting - Sleeve		
20d	5004819	Compressor Mounting - Bolt		
20e	5004829	Compressor Mounting - Nut		
21	5650529	Clamp - Expansion Valve Bulb		
22	3000503	Strap - Expansion Valve Bulb - 0.5"		
23	5202069	Screw - #10-24 x 0.50" HEX		

PART NOTES:

- [1] - with bracket
- [2] - \pages from 000005156_02.jpg" width=280 height=256>
- [3] - \pages from 000005156_02.jpg" width=266 height=183>
- [4] - \pages from 400720_08.jpg" width=923 height=583>
- [5] - Air Pump Tubing Outlet
- [6] - vinyl tubing from distribution tube to water pump & dump valve
- [7] - dump valve to drain adapter
- [8] - \pages from 200126_09.jpg" width=150 height=306>
- [9] - \pages from 401043_05.jpg" width=1797 height=2238>
- [10] - \pages from 00000288_01.jpg" width=228 height=183>

i0522P Indigo

I0522P REFRIGERATION COMPARTMENT – AIR-COOLED



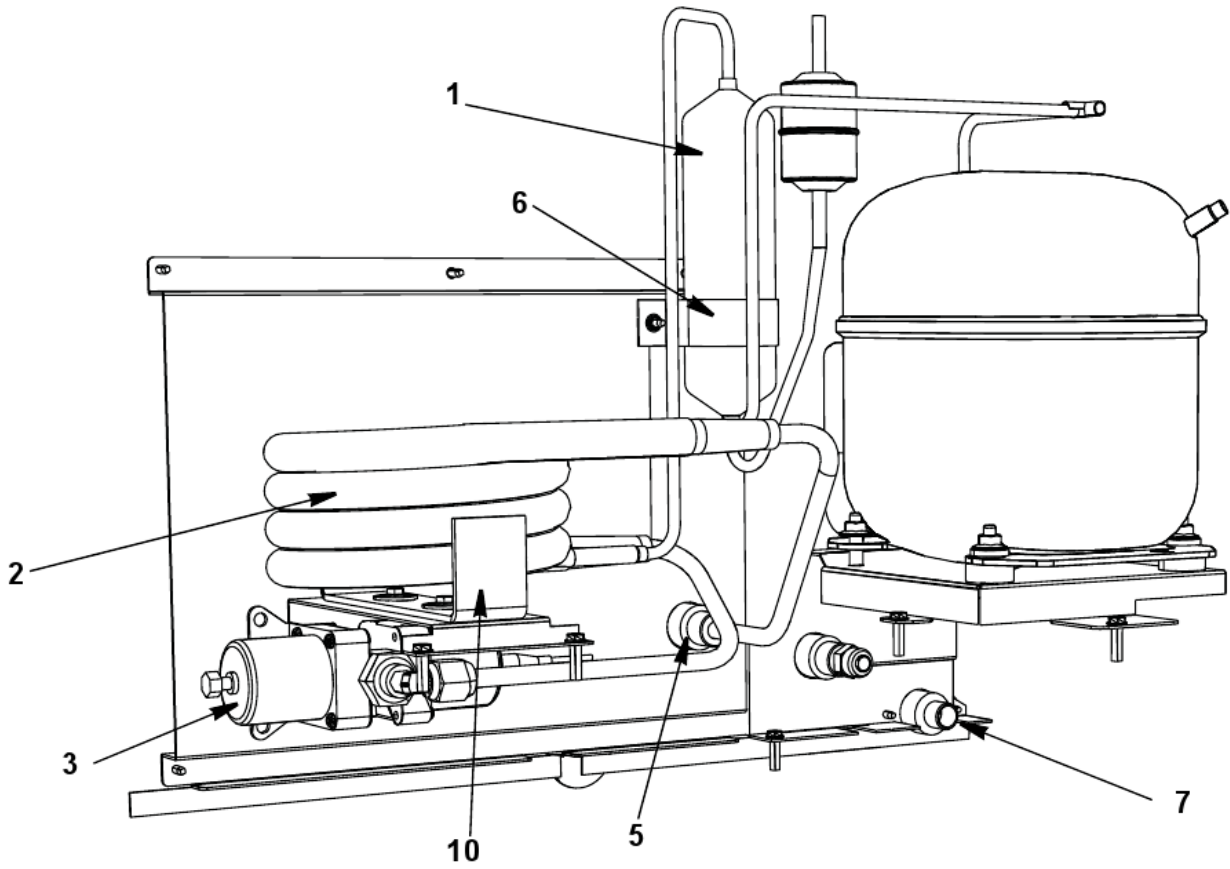
i0522P Indigo

I0522P REFRIGERATION COMPARTMENT – AIR-COOLED

#	PART #	DESCRIPTION	QTY	Note
1	8252129	Air Condenser		
2		Fan Motor		
2a	2412929	Fan Motor 115V/60 Hz/1 Ph		
2b	2412939	Fan Motor 208-230V/50-60 Hz		
3	2416203	Fan Blade		
4	6061689	Fan Shroud		
5	6061869	Fan Motor Bracket		
6	5033589	Mounting - Screw		
6a	5545109	Lockwasher		
6b	5429529	Mounting - Hexnut		
7		Fan Bracket Mounting		
7a	5032389	Fan Bracket Mounting Screw		
7b	5545109	Lockwasher		
7c	5573059	Mounting - Flatwasher		
7d	5429559	Mounting - Rubber Wellnut		
8	5202069	Screw - #10-24 x 0.50" HEX		

i0522P Indigo

I0522P REFRIGERATION COMPARTMENT – WATER-COOLED



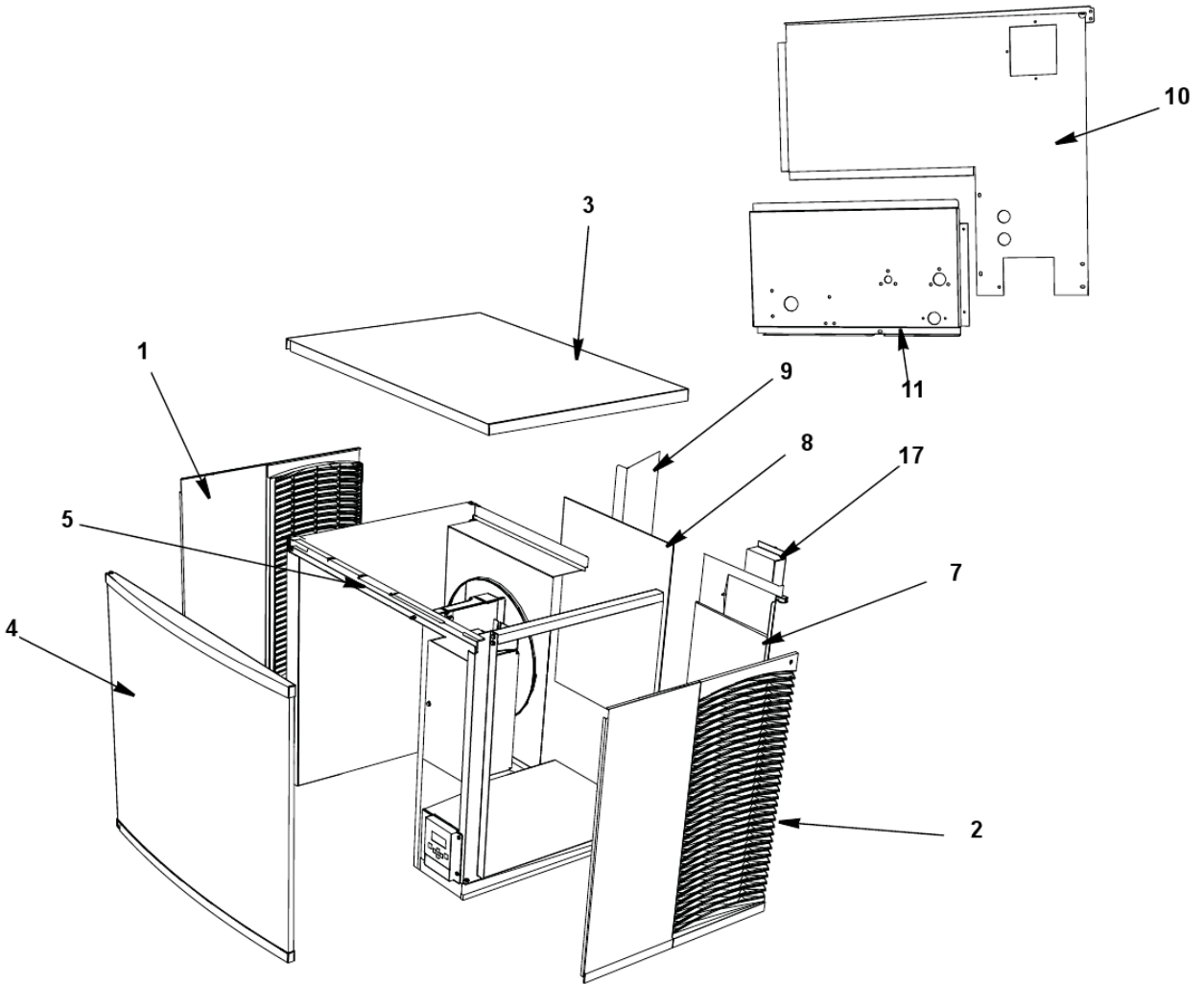
i0522P Indigo

I0522P REFRIGERATION COMPARTMENT – WATER-COOLED

#	PART #	DESCRIPTION	QTY	Note
1	000008892	Receiver		
2	000000046	Water-cooled Condenser		
3	000007546	Water Regulating Valve		
3a	000007695	Bracket - Water Regulating Valve		
4	000007553	High Pressure Water Regulating Valve		
4a	000008482	Panel - High Pressure Regulating Valve		
5	8706083	Female Wing Adapter - 0.50"		
6	6000541	Receiver Strap		
7	5002159	Elbow 3/8 MF x 3/8 MPT		
8	5202063	Screw - #10-24 x 0.50" HEX		
9	5573419	Washer		
10	6058659	Base, Water Condenser/Receiver		

i0522P Indigo

I0522P PANELS



i0522P Indigo

I0522P PANELS

#	PART #	DESCRIPTION	QTY	Note
1		Left Side Panel		
1a	6070151	Left Side Panel - Louvered		
1b	6070171	Left Side Panel - Non-Louvered		
2		Right Side Panel		
2a	6070161	Right Side Panel - Louvered		
2b	6070181	Right Side Panel - Non-Louvered		
3	6070071	Top Cover		
4	000008119	Front Panel Assembly		
5	6070091	Front Top Support		
5a	5005379	Mounting Screw - #8-32 x 1" PHIL		
5b	5005099	Mounting Screw - #10-16 x 0.625" PHIL		
6	6061709	Compressor Mounting Base Air-cooled Back Panels		
7	000008621	Back Panel with Electrical Connection Box, Air-cooled Models		
8	3005939	Air Filter		
9	000007314	Air Baffle Assembly Water-cooled Back Panels		
10	000008622	Back Panel with Electrical Connection Box,		
11	000008022	Back Coupling Panel, Water-cooled Connections		
12	8706083	Female Wing Adapter - 0.50"		
13	7602263	Bottom Door Frame		
13a	5005379	Mounting Screw - #8-32 x 1" PHIL		
13b	5202099	Screw - #10-24 x 0.50" PHIL		
14	6068649	Left Top Channel		
15	6071459	Right Top Channel		
16	6069379	Left Corner Post		
17		Electrical Box on Rear of Ice Machine		
17a	6067289	Rear Connection Box		
17b	6067299	Rear Connection Box Cover		
17c	2006143	Terminal Block - 50 Hz - 3 Pole		
17d	5202169	Screw - #10-24 x 0.50" Ground		
18	5005353	Front Panel Screw		
19	5005343	Screws - #12-16 x 0.50" TORX		
20	5800053	Screwdriver Bit Front Panel - #4-40 TX-15-H		
21	5800043	Screwdriver Bit Side Panels - #4-40 TX-25-H		
22	7112319	Cartoning		