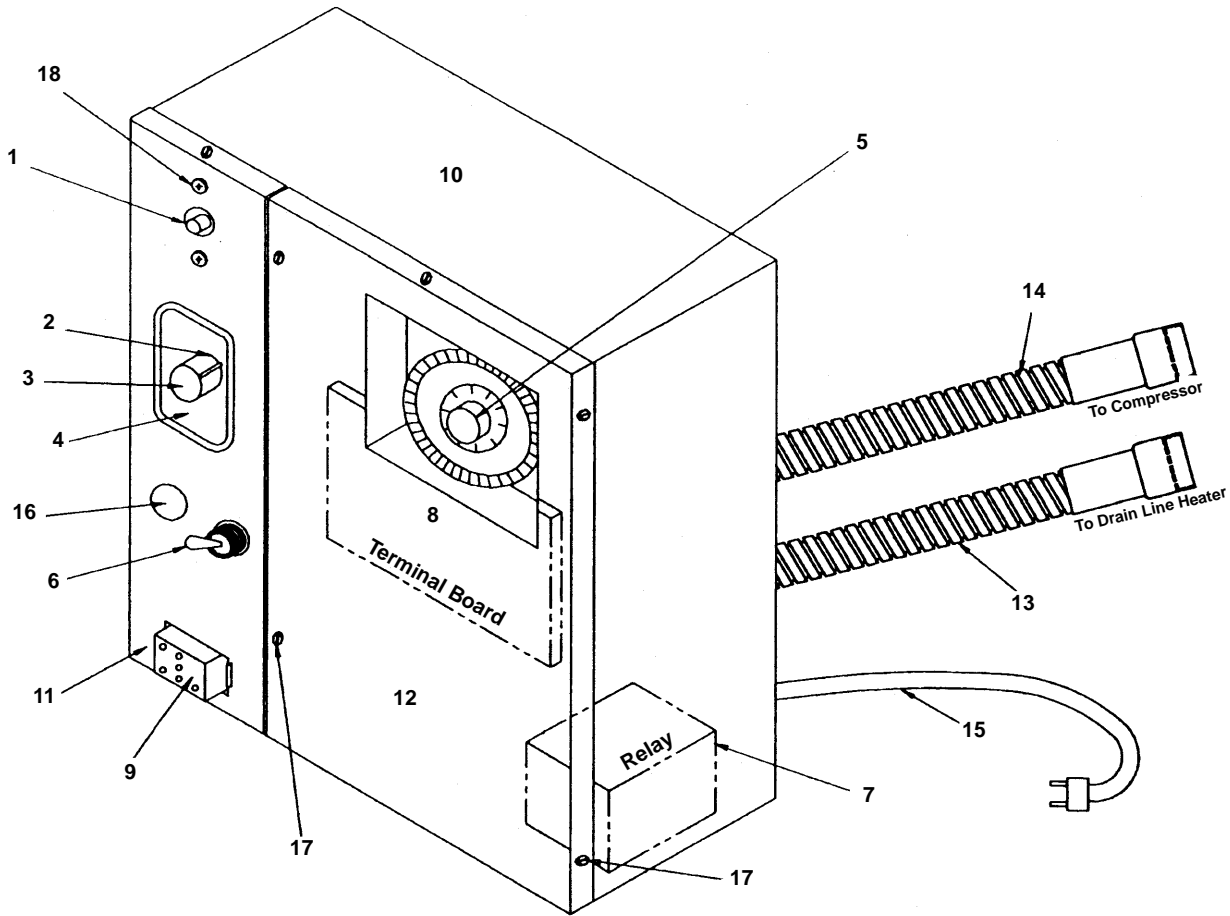




Ice Machine Parts List for Reach-In Freezers

ONE DOOR FREEZER CONTROL BOX



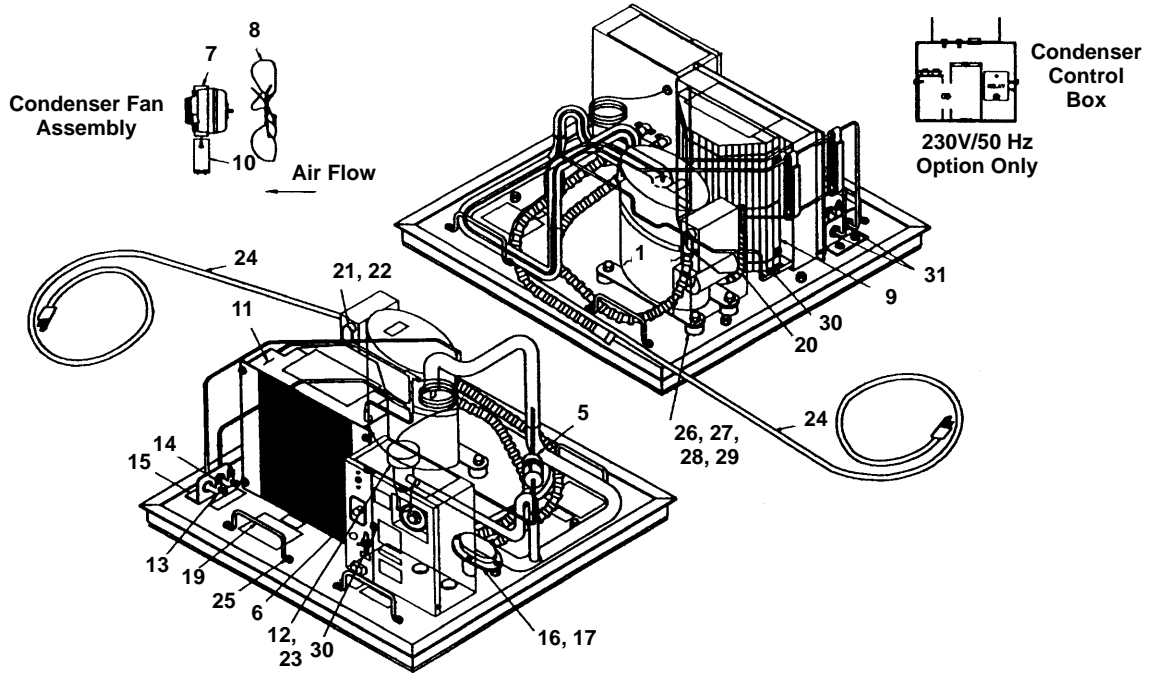
7025

	Up to SN 920880000	920880000 to SN 931280000	931280000 to SN 960480009	Beginning With SN 960480009
1 High Pressure Cut-out	No Longer Available	No Longer Available	† 2355369	None
2 Temperature Control	2351083	2351083	2351083	2351083
3 Control Knob Only	2519043	2519043	2519043	2519043
4 Control Plate Only	No Longer Available	No Longer Available	No Longer Available	No Longer Available
5 Defrost Timer	No Longer Available	No Longer Available	No Longer Available	No Longer Available
6 Power Toggle Switch	No Longer Available	No Longer Available	No Longer Available	No Longer Available
7 Relay 60 Hz	† 2408223	† 2408223	† 2408223	None
8 Terminal Board	2510743	No Longer Available	No Longer Available	No Longer Available
9 Wiring Harness	No Longer Available	2031133	2031553	2031553
10 Control Box Weldment	No Longer Available	No Longer Available	No Longer Available	No Longer Available
11 Control Box Cover, Left Hand	No Longer Available	No Longer Available	No Longer Available	No Longer Available
12 Control Box Cover, Right Hand	No Longer Available	No Longer Available	No Longer Available	No Longer Available
13 Wiring Harness To Drain Line Heater	No Longer Available	No Longer Available	2031573	2031573
14 Wiring Harness To Compressor	No Longer Available	No Longer Available	No Longer Available	No Longer Available
15 Power Cord	2030763	2030763	No Longer Available	
16 Hole Plug	No Longer Available	No Longer Available	No Longer Available	No Longer Available
17 Screw, #10-24 x 1/2	† 5202069	† 5202069	† 5202069	† 5202069
18 Screw, #8-32 x 1/2	† 5026249	† 5121669	† 5121669	None
19 Start Capacitor		(See Page 7)		
20 Run Capacitor		(See Page 7)		
21 Start Relay		(See Page 7)		

NOTE: For 230V/50 or 230V/60 Hz parts, see Page 6.

† Refer to Cross Reference Guide

ONE DOOR FREEZER CONDENSER



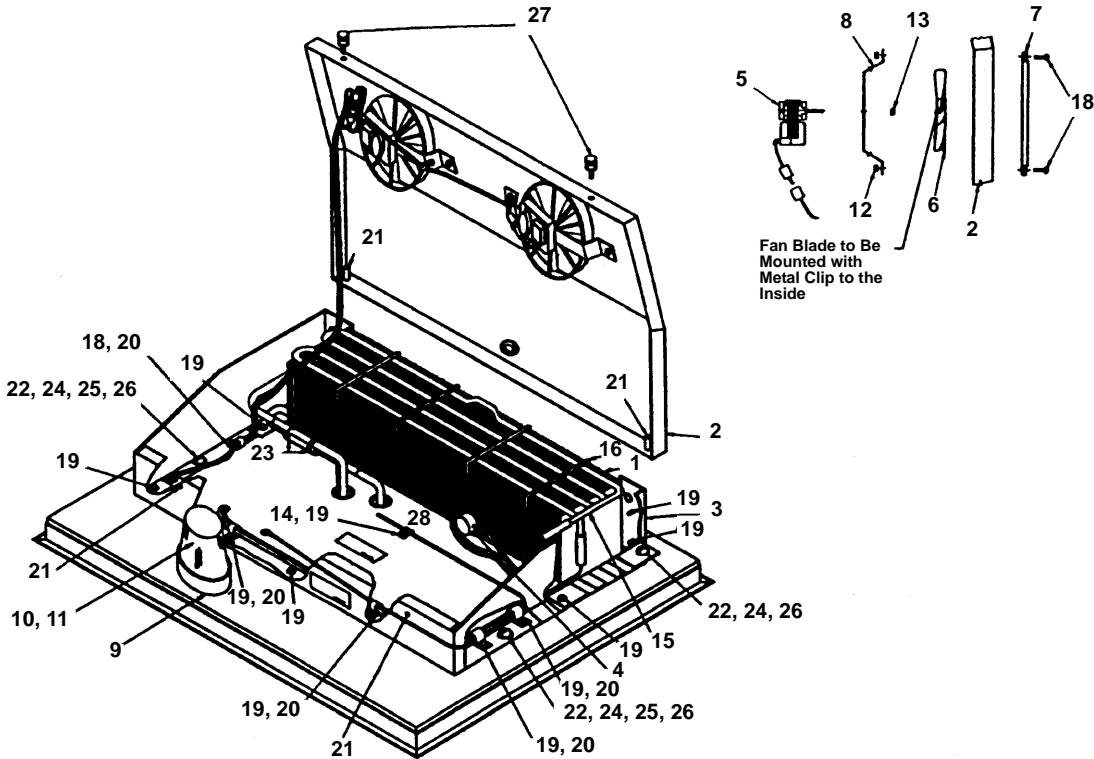
7026

	Up to SN 920880000	920880000 to SN 931280000	931280000 to SN 960480009	Beginning With SN 960480009
1 Compressor 60 Hz	No Longer Available	No Longer Available	No Longer Available	No Longer Available
2 Start Relay			(See Page 7)	
3 Start Capacitor			(See Page 7)	
4 Overload			(See Page 7)	
5 Drier	† 8930259	† 8930259	† 8930259	† 8930259
6 Condenser	No Longer Available	No Longer Available	No Longer Available	No Longer Available
7 Condenser Fan Motor 115/60	No Longer Available	No Longer Available	No Longer Available	† 2412813
8 Condenser Fan Blade	No Longer Available	2400151	2400151	2400151
9 Condenser Fan Guard	No Longer Available	No Longer Available	No Longer Available	No Longer Available
10 Motor Bracket – Copeland	No Longer Available			
10a Motor Bracket Used with Emerson Motor		No Longer Available	No Longer Available	
10b Motor Bracket Used with Morrill Motor			No Longer Available	No Longer Available
11 Condenser Fan Shroud	No Longer Available	No Longer Available	No Longer Available	No Longer Available
11a Fan Shroud, Black Fiberboard		No Longer Available		
12 Expansion Valve	No Longer Available	No Longer Available	No Longer Available	No Longer Available
13 Process Valve		† 8373109	† 8373109	8373223
14 Valve Core Only		No Longer Available		
15 Process Valve Bracket		No Longer Available	No Longer Available	No Longer Available
16 Vacuum Release Top		No Longer Available	No Longer Available	No Longer Available
17 Vacuum Release Ball		No Longer Available	No Longer Available	No Longer Available
17a Screw Fasteners		† 5012169	† 5012169	† 5012169
17b Barrier Screen		No Longer Available	No Longer Available	No Longer Available
18 Retrofit Vacuum Release Assembly	No Longer Available	No Longer Available	No Longer Available	
19 Lift Handle	3000683	3000683	3000683	3000683
20 Conduit, Extra Flex 0.38 ID		2506003	2506043	2506043
21 Anti-short Bushing		No Longer Available	No Longer Available	
22 Conduit Connector		2501221	2501221	
23 Neoprene TXV Boot – Body		4080263	4080263	4007213
24 Power Cord	2030763	2030763	No Longer Available	
25 Fastener 1/4-20 x 3/4	No Longer Available	No Longer Available	No Longer Available	No Longer Available
26 Fastener to Condensing Unit	† 5035729	† 5035729	† 5035729	† 5035729
27 Mounting Grommet		† 8503069	† 8503069	† 8503069
28 Sleeve		† 8503949	† 8503949	† 8503949
29 Washer SS		No Longer Available	No Longer Available	No Longer Available
30 Screw		† 5202069	† 5202069	† 5202069
31 Hex Locknut – Palnut		† 5475039	† 5475039	† 5475039
32 Liquid Injection Valve			No Longer Available	None

NOTE: For 230V/50 or 230V/60 Hz, see parts Page 6.

† Refer to Cross Reference Guide

ONE DOOR FREEZER EVAPORATOR



7027

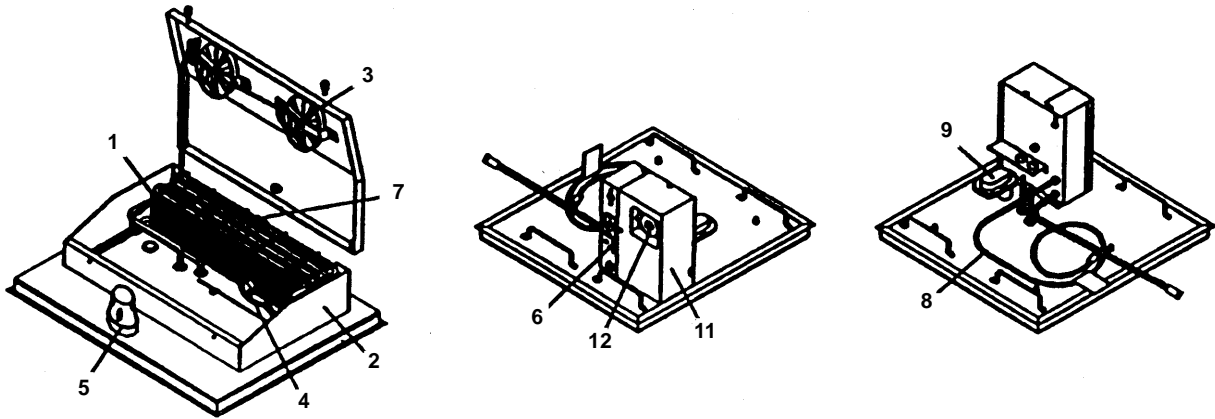
	Up to SN 920880000	920880000 to SN 931280000	931280000 to SN 960480009	Beginning With SN 960480009
1	Evaporator	No Longer Available	No Longer Available	No Longer Available
2	Evaporator Fan Shroud	No Longer Available	No Longer Available	No Longer Available
3	Evaporator Housing Shroud	No Longer Available	No Longer Available	No Longer Available
4	Thermostat	No Longer Available	No Longer Available	No Longer Available
5	Fan Motor 60 Hz	No Longer Available	No Longer Available	No Longer Available
6	Fan Blade – Evaporator	2416163	2416163	2416163
7	Fan Guard – Evaporator	2418103	2418103	2418103
8	Motor Bracket	No Longer Available	No Longer Available	No Longer Available
9	Light Receptacle with Cover	† 2202299	† 2202299	† 2202299
10	Light Cover Only	2202213	2202213	2202213
11	Appliance Light Bulb 60 Hz	2202203	2202203	2202203
12	Nut with Plastic Insert	No Longer Available	No Longer Available	No Longer Available
13	Hex Nut with Nylon Insert	† 5429129	† 5429129	† 5429129
14	Nylon Cable Clamp	† 5650039	† 5650039	† 5650039
15	Defrost Heater Calrod	No Longer Available	No Longer Available	No Longer Available
16	Calrod Clip	No Longer Available	5648213	5648213
17	Heater Limit Control (Not shown)	No Longer Available	No Longer Available	No Longer Available
18	Screw, #12-24 x 3/4 SS	No Longer Available	No Longer Available	No Longer Available
19	Screw, #10-16 x 0.50	No Longer Available	No Longer Available	No Longer Available
20	Nylon Wire Harness Clip	† 5650799	† 5650799	† 5650799
21	Riv-nut, #8-32	5768561	5768561	5768561
22	Screw, 5/16-18 x 2.00	5035743	5035743	5035743
23	Wormdrive Clamp SS	† 5650529	† 5650529	† 5650529
24	Nut, 5/16-18 SS	No Longer Available	No Longer Available	No Longer Available
25	Washer SS	No Longer Available	No Longer Available	No Longer Available
26	Lockwasher SS	No Longer Available	No Longer Available	No Longer Available
27	Thumbscrew	† 5000013	† 5000013	† 5000013
28	Screw, #6 x 3/8	† 5121629	† 5121629	† 5121629
NOT SHOWN – MOUNTED UNDER CABINET				
	Condensate Vaporizor	2202183	2202183	2202183
	Condensate Vaporizor Bracket	No Longer Available	No Longer Available	No Longer Available
	Vaporizor Cord Only	2030939	2030939	2030939

NOTE: For 230V/50 or 230V/60 Hz parts, see Page 6.

† Refer to Cross Reference Guide

REMOTE MODEL FREEZERS

Manitowoc Remote Evaporator Sections (FR1, FR2, FR3) must be used in conjunction with a Maniowoc Reach-In.



7028

The following parts are the same as the one door, self-contained freezer head section. Refer to previous pages for part numbers and serial number breaks.

- | | | | |
|---|--|----|---------------------------------------|
| 1 | Evaporator Coil (with stub copper connections) | 7 | Electric Defrost Heaters |
| 2 | Evaporator Housing | 8 | Power Cord (FR1, FR2) |
| 3 | Evaporator Fan(s) | 9 | Cabinet Vacuum Release |
| 4 | Thermostat | 10 | Wiring for Liquid Line Solenoid Valve |
| 5 | Interior Cabinet Light | 11 | Electrical Control Box |
| 6 | Main On/Off Switch | 12 | Defrost Time Clock |

Field Supplied Components:

- | | | | |
|---|----------------------------------|---|--|
| 1 | Remote Condensing Unit | 5 | Low Pressure Cut-out Control |
| 2 | Expansion Valve | 6 | Inter-connecting Tubing |
| 3 | Liquid Line Drier | 7 | Separate Power Supply |
| 4 | Liquid Line Solenoid (Pump Down) | 8 | Other Parts or Hardware to Complete Installation |

ONE DOOR FREEZER

230V/50 Hz Application

All parts are the same as 115V/60 Hz application with the following exceptions:

	Up to SN 931280000	931280000 to SN 960480009	Beginning With SN 960480009
CONTROL BOX			
Relay	2408233	2408233	None
Defrost Timer	No Longer Available	No Longer Available	No Longer Available
CONDENSER			
Compressor	No Longer Available	No Longer Available	No Longer Available
Start Capacitor		(See Page 7)	
Run Capacitor		(See Page 7)	
Start Relay		(See Page 7)	
Condenser Fan Motor	No Longer Available	No Longer Available	† 2412823
Power Cord	No Longer Available	No Longer Available	No Longer Available
EVAPORATOR			
Evaporator Fan Motor	No Longer Available	No Longer Available	No Longer Available
Appliance Light Bulb	No Longer Available	No Longer Available	No Longer Available
Condensate Vaporizor	2202303	2202303	2202303
Defrost Calrod Heater	No Longer Available	8800783	8800783

230V/60 Hz Application

All parts are the same as 115V/60 Hz application with the following exceptions:

	931280000 to SN 960480009	Beginning With SN 960480009
CONTROL BOX		
Relay	2408233	None
Defrost Timer	No Longer Available	
CONDENSER		
Compressor	No Longer Available	No Longer Available
Start Capacitor		(See Page 7)
Start Relay		(See Page 7)
Run Capacitor		(See Page 7)
Condenser Fan Motor	† 2412823	† 2412823
Power Cord	No Longer Available	No Longer Available
EVAPORATOR		
Evaporator Fan Motor	No Longer Available	No Longer Available
Appliance Light Bulb	2402313	2402313
Condensate Vaporizor	2202303	2202303
Evaporator Calrod Heater	8800783	8800783

† Refer to Cross Reference Guide

COMPRESSOR COMPONENTS FOR ONE DOOR FREEZER

115V/60 Hz/1 Ph

Compressor Model Number	Start Relay	Start Capacitor	Run Capacitor	Overload
Copeland RSU5-0050-IAA-208	No Longer Available	No Longer Available	None	No Longer Available
Tecumseh AK9458J B/M AK162AT-039-A4D . .	2007993	8503723	None	8504293
Copeland RS64CIE-CAA-233	2007539	8503723	None	8505433

230V/50 Hz/1 Ph

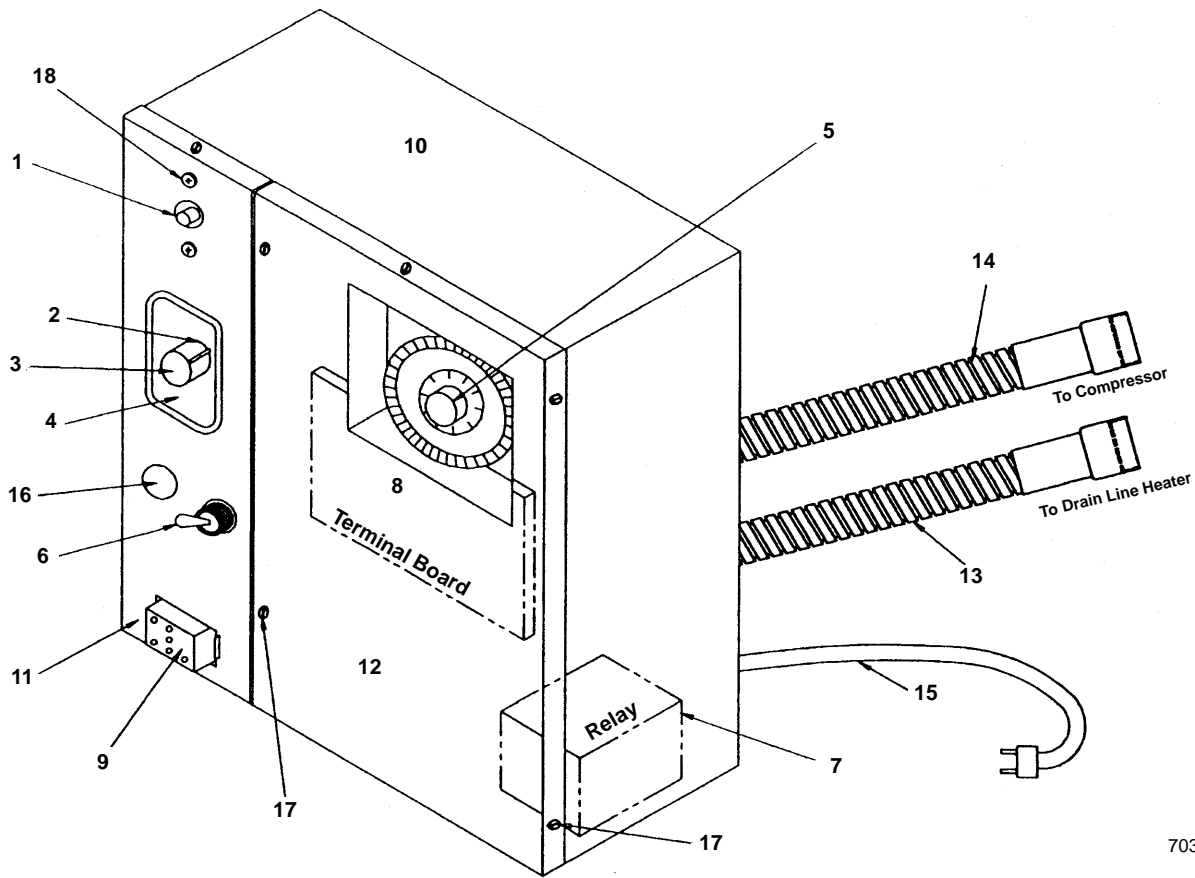
Compressor Model Number	Start Relay	Start Capacitor	Run Capacitor	Overload
Copeland RSU5-0050-CAZ-202	No Longer Available	No Longer Available	No Longer Available	None
Tecumseh AK9458J B/M AK162JT-039-A4D . .	8504483	8503723	8504003	None
Copeland RS64CIE-IAZ-233	No Longer Available	8503143	None	8505453

230V/60 Hz/1 Ph

Compressor Model Number	Start Relay	Start Capacitor	Run Capacitor	Overload
Tecumseh AK9458J B/M AK162ET-039-A4D . .	8504553	8503723	8504003	None
Copeland RS64CIE-CAV-223	2007549	8503143	8504003	No Longer Available

† Refer to Cross Reference Guide

TWO DOOR FREEZER CONTROL BOX



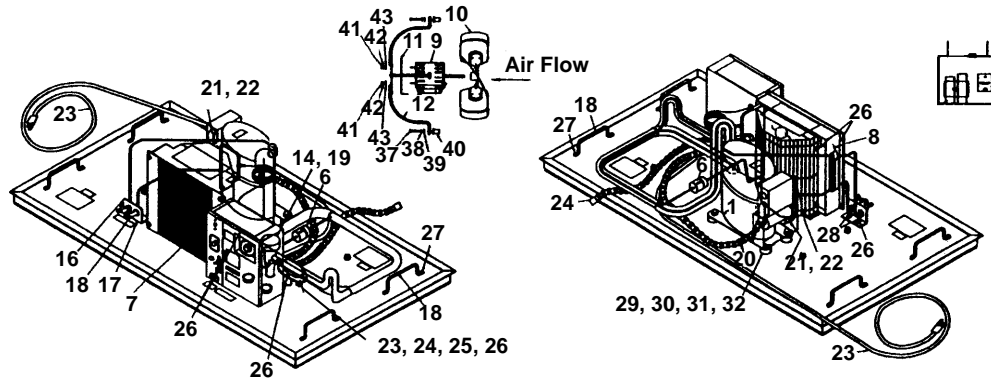
7031

	Up to SN 921180000	921180000 to SN 931180000	931180000 to SN 960780000	Beginning With SN 960780000
1 High Pressure Cut-out	No Longer Available	No Longer Available	† 2355369	None
2 Temperature Control	2351083	2351083	2351083	2351083
3 Control Knob Only	2519043	2519043	2519043	2519043
4 Control Plate Only	No Longer Available	No Longer Available	No Longer Available	No Longer Available
5 Defrost Timer	No Longer Available	No Longer Available	No Longer Available	No Longer Available
6 Power Toggle Switch	No Longer Available	No Longer Available	No Longer Available	No Longer Available
7 Relay 60 Hz	† 2408223	† 2408223	† 2408223	None
8 Terminal Board	2510743	No Longer Available	No Longer Available	No Longer Available
9 Wiring Harness	No Longer Available	2031133	2031553	2031553
10 Control Box Weldment	No Longer Available	No Longer Available	No Longer Available	No Longer Available
11 Control Box Cover, Left Hand	No Longer Available	No Longer Available	No Longer Available	No Longer Available
12 Control Box Cover, Right Hand	No Longer Available	No Longer Available	No Longer Available	No Longer Available
13 Wiring Harness to Drain Line Heater	No Longer Available	No Longer Available	No Longer Available	2031573
14 Wiring Harness to Compressor	No Longer Available	No Longer Available	No Longer Available	No Longer Available
15 Power Cord	No Longer Available	No Longer Available	2031683	2031683
16 Hole Plug	No Longer Available	No Longer Available	No Longer Available	No Longer Available
17 Screw, #10-24 x 1/2	† 5202069	† 5202069	† 5202069	† 5202069
18 Screw, #8-32 x 1/2	† 5026249	† 5121669	† 5121669	None
19 Start Capacitor		(See Page 13)		
20 Run Capacitor		(See Page 13)		
21 Start Relay		(See Page 13)		

NOTE: For 230V/50 or 230V/60 Hz parts, see Page 12.

† Refer to Cross Reference Guide

TWO DOOR FREEZER CONDENSER



230V/60 Hz
Option Only

7032

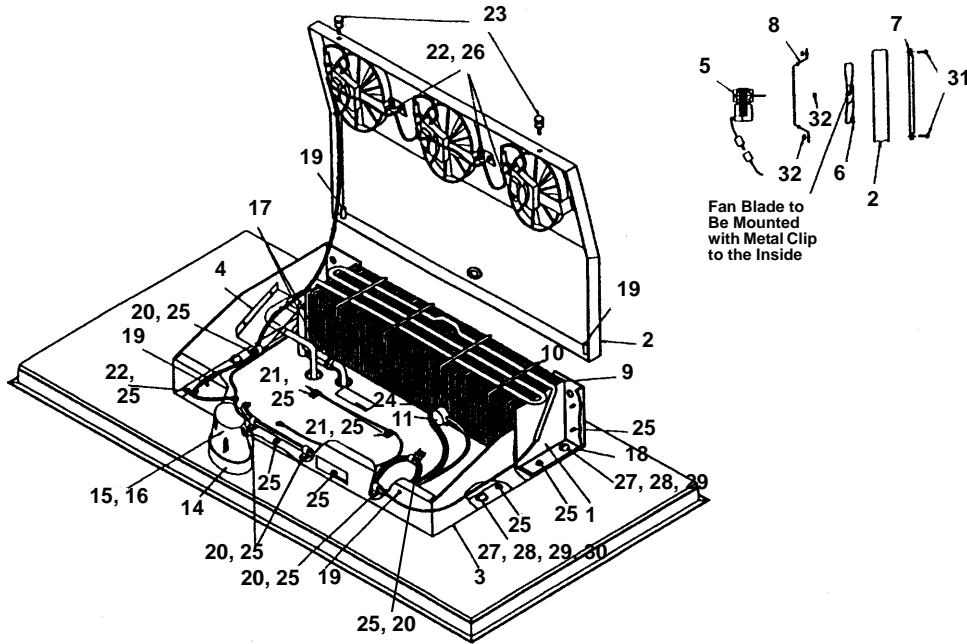
	Up to SN 921180000	921180000 to SN 931180000	931180000 to SN 960780000	Beginning With SN 960780000
1 Compressor 60 Hz	No Longer Available	No Longer Available	No Longer Available	No Longer Available
2 Start Relay		(See Page 13)		
3 Start Capacitor		(See Page 13)		
4 Drier	† 8930259	† 8930259	† 8930259	† 8930259
5 Overload		(See Page 13)		
6 Run Capacitor		(See Page 13)		
7 Drain Tube Extension (Not shown)		No Longer Available		
8 Condenser 60 Hz	No Longer Available	No Longer Available	No Longer Available	8851203
9 Condenser Fan Shroud	No Longer Available	No Longer Available	No Longer Available	No Longer Available
10 Fan Shroud, Black Fiberboard				7111873
11 Fan Motor 115/60 (see note below)	No Longer Available	† 2412929	† 2412929	† 2412929
12 Fan Blade	No Longer Available	2416213	2416213	2416213
13 Fan Motor Bracket	No Longer Available	No Longer Available		6505791
14 Fan Motor Mount		No Longer Available	No Longer Available	No Longer Available
15 Fan Guard	No Longer Available	No Longer Available		No Longer Available
16 Expansion Valve	No Longer Available	No Longer Available	No Longer Available	† 7627313
17 Process Valve		† 8373109	† 8373109	† 8373109
18 Valve Core Only		No Longer Available		
19 Process Valve Bracket		No Longer Available	No Longer Available	No Longer Available
20 Lift Handle	3000683	3000683	3000683	3000683
21 Neoprene TXV Boot		4080263	4080263	4007213
22 Conduit, Extra Flex 0.38 ID		2506023	2506023	2506023
23 Anti-short Bushing		No Longer Available	No Longer Available	No Longer Available
24 Conduit Connector		2502033	2502033	2502033
25 Power Cord		No Longer Available	2031683	2031683
26 Wire Harness to Drain Line Heater		No Longer Available	2031573	2031573
27 Wire Harness to Compressor		No Longer Available	No Longer Available	No Longer Available
28 Screw		† 5202069	† 5202069	† 5202069
29 Fastener		No Longer Available	No Longer Available	No Longer Available
30 Hex Locknut – Palnut		† 5475039	† 5475039	† 5475039
31 Fastener to Condensing Unit		† 5035729	† 5035729	† 5035729
32 Mounting Grommet		No Longer Available	† 8503069	† 8503069
33 Sleeve		No Longer Available	† 8503949	† 8503949
34 Washer SS		No Longer Available	No Longer Available	No Longer Available
35 Vacuum Release Top		No Longer Available	No Longer Available	No Longer Available
36 Retrofit Vacuum Release Assembly	No Longer Available	No Longer Available	No Longer Available	No Longer Available
37 Vacuum Release Ball		No Longer Available	No Longer Available	No Longer Available
38 Barrier Screen		No Longer Available	No Longer Available	No Longer Available
39 Screw, 0.25-20 x 1.25		† 5033589	† 5033589	† 5033589
40 Lockwasher, 0.25 Split		† 5545109	† 5545109	† 5545109
41 Flatwasher		† 5573059	† 5573059	† 5573059
42 Well-nut, 0.25-20 Rubber		† 5429559	† 5429559	† 5429559
43 Hex Nut, #8-32		† 5429069	† 5429069	None
44 Lockwasher #8		† 5544599	† 5544599	None
45 Flatwasher, 0.203 ID SS		† 5504279	† 5504279	† 5504279
46 Liquid Injection Valve		No Longer Available	No Longer Available	None

NOTE: When replacing Fan Motor 2412929, order Bracket 6505791 and Screw 5429139.

NOTE: For 230V/50 or 230V/60 Hz parts, see Page 12.

† Refer to Cross Reference Guide

TWO DOOR FREEZER EVAPORATOR



7033

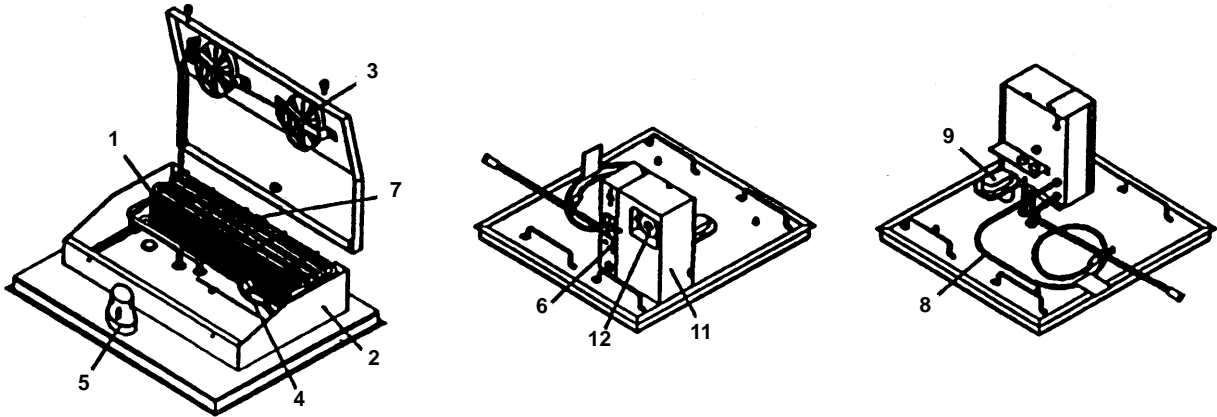
	Up to SN 921180000	921180000 to SN 931180000	931180000 to SN 960780000	Beginning With SN 960780000
1 Evaporator	8850723	No Longer Available	No Longer Available	No Longer Available
2 Evaporator Fan Shroud	No Longer Available	† 7627893	† 7627893	† 7627893
3 Evaporator Housing Shroud		No Longer Available	No Longer Available	No Longer Available
4 Guard		No Longer Available	No Longer Available	No Longer Available
5 Fan Motor 60 Hz	No Longer Available	No Longer Available	No Longer Available	No Longer Available
6 Fan Blade – Evaporator	2416163	2416163	2416163	2416163
7 Fan Guard – Evaporator	2418103	2418103	2418103	2418103
8 Fan Motor Bracket	No Longer Available	No Longer Available	No Longer Available	No Longer Available
9 Defrost Heater Calrod	2202243	8800713	8800713	8800713
10 Calrod Clip	No Longer Available	5648183	5648183	5648183
11 Thermostat	No Longer Available	No Longer Available	No Longer Available	No Longer Available
12 Terminal Board (Not shown)	No Longer Available			
13 Terminal Board Cover (Not shown)	No Longer Available			
14 Light Receptacle with Cover	† 2202299	† 2202299	† 2202299	† 2202299
15 Light Cover Only	2202213	2202213	2202213	2202213
16 Appliance Light Bulb 60 Hz	2202203	2202203	2202203	2202203
17 Wormdrive Clamps (Pkg of 2)		† 5650529	† 5650529	† 5650529
18 Plate		No Longer Available	6503271	No Longer Available
19 Riv-nut, #8-32		5768569	5768569	5768569
20 Nylon Wire Harness Clip		† 5650799	† 5650799	† 5650799
21 Nylon Cable Clamp		† 5650039	† 5650039	† 5650039
22 Cable Tie with Mounting Hole		† 5650659	† 5650659	† 5650659
23 Thumbscrew		† 5000013	† 5000013	† 5000013
24 Screw, #6 x 0.375		† 5121629	† 5121629	† 5121629
25 Screw, #10-16 x 0.50		No Longer Available	No Longer Available	No Longer Available
26 Screw, #10-24 x 0.50		† 5202069	† 5202069	† 5202069
27 Screw, 5/16-18 x 2.00		5035743	5035743	5035743
28 Nut, 5/16-18 SS		No Longer Available	No Longer Available	No Longer Available
29 Lockwasher, 5/16 SS		No Longer Available	No Longer Available	No Longer Available
30 Washer, 0.39 ID SS		No Longer Available	No Longer Available	No Longer Available
31 Screw		No Longer Available	No Longer Available	No Longer Available
32 Nut, #12-24 with Plastic Insert		No Longer Available	No Longer Available	No Longer Available
NOT SHOWN – MOUNTED UNDER CABINET				
Condensate Vaporizor	2202183	2202183	2202183	2202183
Condensate Vaporizor Bracket	No Longer Available	No Longer Available	No Longer Available	No Longer Available
Vaporizor Cord Only	2030939	2030939	2030939	2030939

NOTE: For 230V/50 or 230V/60 Hz parts, see Page 12.

† Refer to Cross Reference Guide

REMOTE MODEL FREEZER

Manitowoc Remote Evaporator Sections (FR1, FR2, FR3) must be used in conjunction with a Manitowoc Reach-In.



7034

The following parts are the same as the two door, self-contained freezer head section. Refer to previous pages for part numbers and serial number breaks.

- | | | | |
|---|--|----|---------------------------------------|
| 1 | Evaporator Coil (with stub copper connections) | 7 | Electric Defrost Heaters |
| 2 | Evaporator Housing | 8 | Power Cord (FR1, FR2) |
| 3 | Evaporator Fan(s) | 9 | Cabinet Vacuum Release |
| 4 | Thermostat | 10 | Wiring for Liquid Line Solenoid Valve |
| 5 | Interior Cabinet Light | 11 | Electrical Control Box |
| 6 | Main On/Off Switch | 12 | Defrost Time Clock |

Field Supplied Components:

- | | | | |
|---|----------------------------------|---|--|
| 1 | Remote Condensing Unit | 5 | Low Pressure Cut-out Control |
| 2 | Expansion Valve | 6 | Inter-connecting Tubing |
| 3 | Liquid Line Drier | 7 | Separate Power Supply |
| 4 | Liquid Line Solenoid (Pump Down) | 8 | Other Parts or Hardware to Complete Installation |

TWO DOOR FREEZER

230V/50 Hz Application

All parts are the same as 115V/60 Hz application with the following exceptions:

	Up to SN 931180000	931180000 to SN 960780000	Beginning With SN 960780000
CONTROL BOX			
Relay	2408233	2408233	None
Defrost Timer	No Longer Available	No Longer Available	No Longer Available
CONDENSER			
Compressor	No Longer Available	No Longer Available	No Longer Available
Start Capacitor		(See Page 13)	
Run Capacitor		(See Page 13)	
Start Relay		(See Page 13)	
Condenser Fan Motor (see note below)	† 2412939	† 2412939	† 2412939
Power Cord	No Longer Available	No Longer Available	No Longer Available
EVAPORATOR			
Evaporator Fan Motor	No Longer Available	No Longer Available	No Longer Available
Appliance Light Bulb	No Longer Available	No Longer Available	No Longer Available
Condensate Vaporizer	2202303	2202303	2202303
Defrost Calrod Heater	No Longer Available	No Longer Available	No Longer Available

NOTE: When replacing Fan Motor 2412939, order Bracket 6505791 and Screw 5429139.

230V/60 Hz Application

All parts are the same as 115V/60 Hz application with the following exceptions:

	Up to SN 960780000	Beginning With SN 960780000
CONTROL BOX		
Relay	2408233	None
Defrost Timer	No Longer Available	
CONDENSER		
Compressor	No Longer Available	No Longer Available
Start Capacitor		(See Page 13)
Start Relay		(See Page 13)
Run Capacitor		(See Page 13)
Condenser Fan Motor (see note below)	† 2412939	2412933
Power Cord	No Longer Available	No Longer Available
EVAPORATOR		
Evaporator Fan Motor	No Longer Available	No Longer Available
Appliance Light Bulb	2402313	2402313
Condensate Vaporizer	2202303	2202303
Evaporator Calrod Heater	No Longer Available	No Longer Available

NOTE: When replacing Fan Motor 2412939, order Bracket 6505791 and Screw 5429139.

† Refer to Cross Reference Guide

COMPRESSOR COMPONENTS FOR TWO DOOR FREEZER

115V/60 Hz/1 Ph

Compressor Model Number	Start Relay	Start Capacitor	Run Capacitor	Overload
Copeland RSN5-0075-IAA-709	No Longer Available	8504203	None	No Longer Available
Tecumseh AK9474J B/M AK160AT-036-K4D . .	2007993	8503723	† 8503423	No Longer Available
Bristol L61B452BBAB	2007519	† 1500021	† 8503423	None
Copeland RS64CIE-CAA-233	2007539	8503723	8503933	

230V/50 Hz/1 Ph

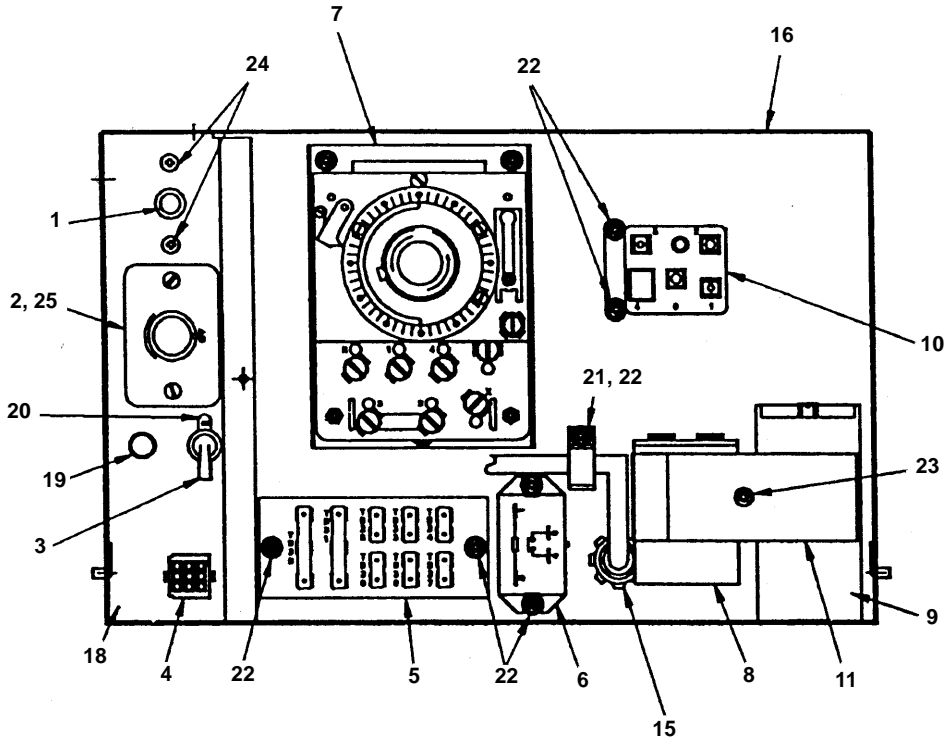
Compressor Model Number	Start Relay	Start Capacitor	Run Capacitor	Overload
Copeland RSN5-0075-PAZ-204	No Longer Available	No Longer Available	8504653	None
Tecumseh AK9474J B/M AM 60JT-036-K4D . .	8504593	8503723	8504003	None
Bristol L61B562BBKB	8504893	8503643	8504003	None

230V/60 Hz/1 Ph

Compressor Model Number	Start Relay	Start Capacitor	Run Capacitor	Overload
Tecumseh AK9474J B/M AK160ET-036-K4D . .	No Longer Available	8503723	8504003	None
Bristol L61B452BBCB	8504883	8503643	8504003	None
Copeland RS64CIE-CAV-233	2007549	8503143	8504003	

† Refer to Cross Reference Guide

THREE DOOR FREEZER CONTROL BOX



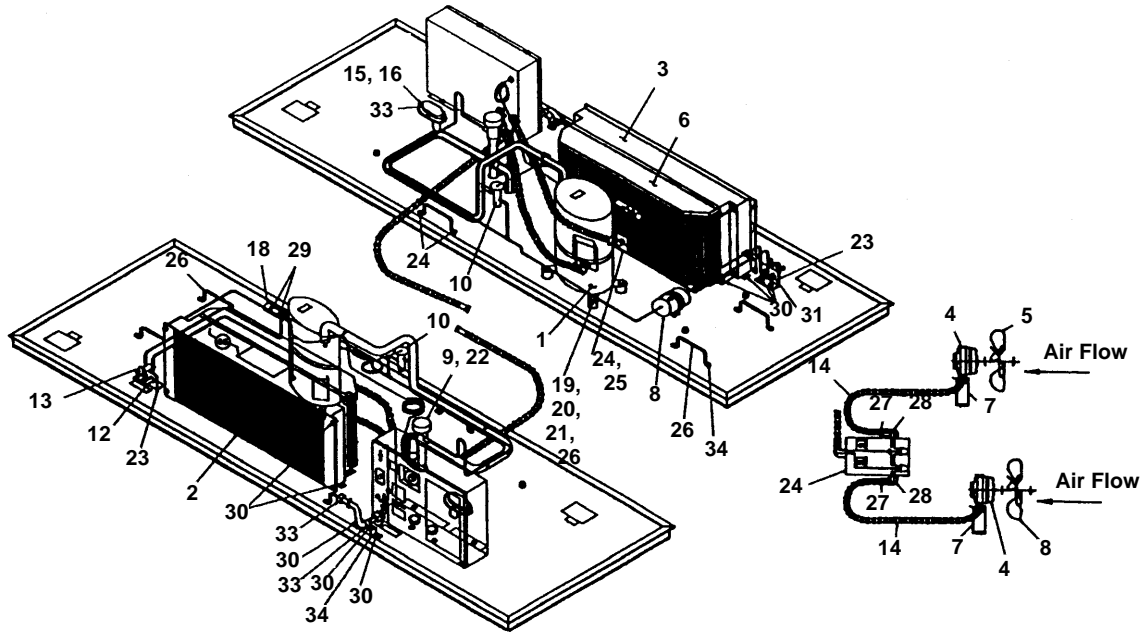
7037

	Up to SN 93048000	93048000 to SN 960380014	Beginning with SN 960380014
1 High Pressure Cut-out	No Longer Available	No Longer Available	None
2 Temperature Control	2351083	2351083	2351083
3 Power Toggle Switch	No Longer Available	No Longer Available	No Longer Available
4 Wiring Harness	No Longer Available	2031133	2031133
5 Terminal Board.	2510743	No Longer Available	No Longer Available
6 Relay 60 Hz	No Longer Available	† 2408223	None
7 Defrost Timer	No Longer Available	No Longer Available	No Longer Available
8 Run Capacitor		(See Page 19)	
9 Start Capacitor		(See Page 19)	
10 Start Relay		(See Page 19)	
11 Capacitor Bracket		No Longer Available	No Longer Available
12 Wiring Harness to Compressor		2031323	
13 Wiring Harness to Drain Line Heater	No Longer Available	No Longer Available	2031573
14 Wiring Harness to Condenser		2031243	2031243
15 Power Cord		2031343	2031343
16 Control Box Weldment	No Longer Available	No Longer Available	No Longer Available
17 Control Box Cover, Right Hand	No Longer Available	No Longer Available	No Longer Available
18 Control Box Cover, Left Hand	No Longer Available	No Longer Available	No Longer Available
19 Hole Plug	No Longer Available	No Longer Available	No Longer Available
20 On/Off Switch Plate		No Longer Available	No Longer Available
21 Nylon Wire Harness Clip		† 5650799	† 5650799
22 Screw, #10-24 x 1/2	† 5202069	† 5202069	† 5202069
23 Screw, #10-24 x 2.25		No Longer Available	No Longer Available
24 Screw, #8 x 0.75		† 5121669	None
25 Poly Tubing 1/4"		4420291	4420291
26 Overload (Not shown)	No Longer Available		
27 Wire Harness – Control Box Jumper (Used to extend Harness)	No Longer Available	No Longer Available	

NOTE: For 230V/50 Hz parts, see Page 18.

† Refer to Cross Reference Guide

THREE DOOR FREEZER CONDENSER

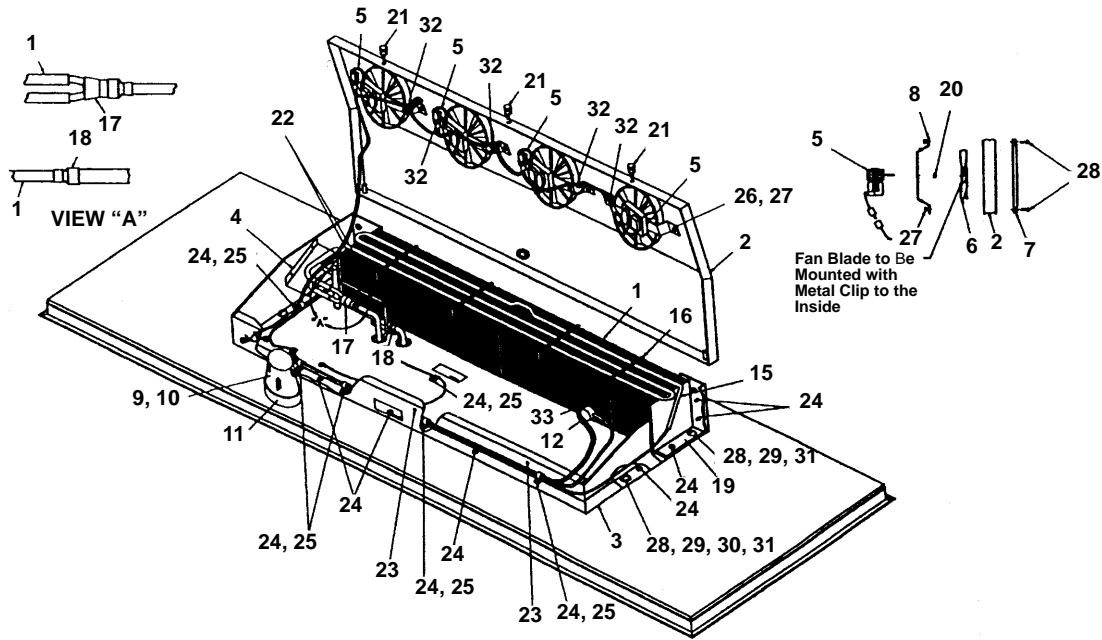


7038

	Up to SN 93048000	93048000 to SN 960380014	Beginning with SN 960380014
1 Compressor 60 Hz	No Longer Available	No Longer Available	No Longer Available
2 Condenser	No Longer Available	8850863	No Longer Available
3 Condenser Fan Shroud – Metal	No Longer Available	No Longer Available	No Longer Available
LH Shroud – Black Fiberboard			7111883
RH Shroud – Black Fiberboard			7111893
4 Fan Motor 230V/50-60 Hz	No Longer Available	No Longer Available	No Longer Available
5 Fan Blade	No Longer Available	2400151	2400151
6 Fan Guard	No Longer Available	No Longer Available	3406843
7 Fan Motor Bracket (Copeland)	No Longer Available	No Longer Available	No Longer Available
Fan Motor Bracket (Emerson)		No Longer Available	No Longer Available
Fan Motor Bracket (Morril)		No Longer Available	No Longer Available
8 Drier	† 8930259	† 8930279	† 8930259
9 Expansion Valve	No Longer Available	No Longer Available	† 7627343
10 Liquid Injection Valve		No Longer Available	None
11 Pressure Control (Not shown)	No Longer Available		
12 Process Valve		† 8373109	8373223
13 Valve Core Only		No Longer Available	
14 Conduit		2506013	2506013
15 Vacuum Release Top		No Longer Available	No Longer Available
16 Vacuum Release Ball		No Longer Available	No Longer Available
17 Retrofit Vacuum Release Assembly	No Longer Available	No Longer Available	No Longer Available
18 Neoprene Bulb Boot		4080273	4007203
19 Sleeve		† 8503949	† 8503949
20 Fastener to Condensing Unit	† 5035729	† 5035729	† 5035729
21 Washer SS		No Longer Available	No Longer Available
22 Neoprene TXV Boot		4080263	4002213
23 Process Valve Bracket		No Longer Available	No Longer Available
24 Electrical Box		No Longer Available	No Longer Available
25 Electrical Box Cover		2515033	2515033
26 Lift Handle	3000683	3000683	3000683
27 Anti-short Bushing		No Longer Available	No Longer Available
28 Conduit Connector		2501221	2501221
29 Wormdrive Clamp, SS		† 5650529	† 5650529
30 Screw		† 5202069	† 5202069
31 Hex Locknut – Palnut		† 5475039	† 5475039
32 Conduit Bracket		No Longer Available	No Longer Available
33 Jiffy Clip		5650783	5650783
34 Fastener		No Longer Available	No Longer Available
35 Thumbscrew #8-1/2 SS		† 5012169	† 5012169
36 Mounting Grommet		† 8503069	† 8503069

NOTE: For 230V/50 Hz parts, see Page 18.

THREE DOOR FREEZER EVAPORATOR



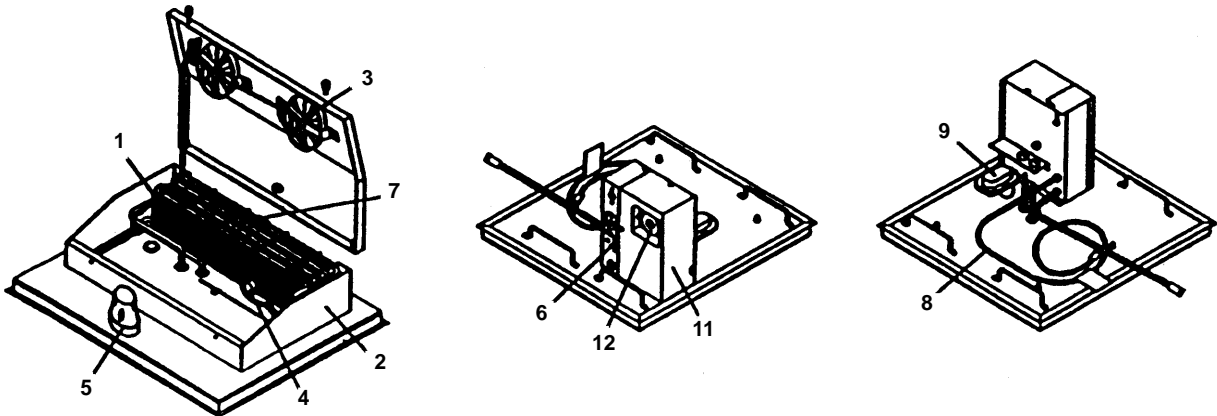
7039

	Up to SN 93048000	93048000 to SN 960380014	Beginning with SN 960380014	
1	Evaporator	No Longer Available	8850883	No Longer Available
2	Evaporator Fan Shroud Weldment	No Longer Available	No Longer Available	No Longer Available
3	Evaporator Housing Shroud	No Longer Available	No Longer Available	No Longer Available
4	Evaporator Guard	No Longer Available	No Longer Available	No Longer Available
5	Fan Motor 60 Hz	No Longer Available	No Longer Available	No Longer Available
6	Fan Blade – Evaporator.	No Longer Available	2416163	2416163
7	Fan Guard – Evaporator	No Longer Available	2418103	2418103
8	Fan Motor Bracket	No Longer Available	No Longer Available	No Longer Available
9	Light Receptacle with Cover	† 2202299	† 2202299	† 2202299
10	Light Cover Only	2202213	2202213	2202213
11	Appliance Light Bulb 60 Hz	2202203	2202203	2202203
12	Thermostat.	No Longer Available	No Longer Available	No Longer Available
13	Terminal Board (Not shown)	No Longer Available	No Longer Available	No Longer Available
14	Terminal Board Cover (Not shown)	No Longer Available	No Longer Available	No Longer Available
15	Defrost Heater Calrod	No Longer Available	No Longer Available	No Longer Available
16	Calrod Clip.	No Longer Available	5648183	5648183
17	Distributor	No Longer Available	No Longer Available	No Longer Available
18	Reducing Coupling	No Longer Available	8300673	8300673
19	Plate.	No Longer Available	No Longer Available	No Longer Available
20	Nut, #8-32 w/Nylon Insert	No Longer Available	† 5429129	† 5429129
21	Thumbscrew	No Longer Available	† 5000013	† 5000013
22	Wormdrive Clamp SS	No Longer Available	† 5650529	† 5650529
23	Riv-nut #8-32.	No Longer Available	5768561	5768561
24	Screw, #10-16 x 0.50 Hex Head	No Longer Available	No Longer Available	No Longer Available
25	Nylon Wire Harness Clip	No Longer Available	† 5650799	† 5650799
26	Screw, #12-24 x 0.75 SS	No Longer Available	No Longer Available	No Longer Available
27	Nut #12-24 w/Plastic Insert	No Longer Available	No Longer Available	No Longer Available
28	Screw, 5/16-18 x 2.00 SS	No Longer Available	5035743	5035743
29	Nut, 5/16-18 SS.	No Longer Available	No Longer Available	No Longer Available
30	Washer, SS 0.39 ID x 0.875 OD	No Longer Available	No Longer Available	No Longer Available
31	Lockwasher 5/16 SS	No Longer Available	No Longer Available	No Longer Available
32	Plastic Cable Tie	No Longer Available	† 5650429	† 5650659
33	Screw, #6 x 0.375	No Longer Available	† 5121629	† 5121629
NOT SHOWN – MOUNTED UNDER CABINET				
	Condensate Vaporizor	2202183	2202183	2202183
	Condensate Vaporizor Bracket.	No Longer Available	No Longer Available	No Longer Available
	Vaporizor Cord Only.	2030939	2030939	2030939
For 230V/50 Hz parts, see Page 18.				

† Refer to Cross Reference Guide

REMOTE MODEL FREEZER

Manitowoc Remote Evaporator Sections (FR1, FR2, FR3) must be used in conjunction with a Manitowoc Reach-In.



7040

The following parts are the same as the three door, self-contained freezer head section. Refer to previous pages for part numbers and serial number breaks.

- | | | | |
|---|--|----|---------------------------------------|
| 1 | Evaporator Coil (with stub copper connections) | 7 | Electric Defrost Heaters |
| 2 | Evaporator Housing | 8 | Power Cord (FR1, FR2) |
| 3 | Evaporator Fan(s) | 9 | Cabinet Vacuum Release |
| 4 | Thermostat | 10 | Wiring for Liquid Line Solenoid Valve |
| 5 | Interior Cabinet Light | 11 | Electrical Control Box |
| 6 | Main On/Off Switch | 12 | Defrost Time Clock |

Field Supplied Components:

- | | | | |
|---|----------------------------------|---|--|
| 1 | Remote Condensing Unit | 5 | Low Pressure Cut-out Control |
| 2 | Expansion Valve | 6 | Inter-connecting Tubing |
| 3 | Liquid Line Drier | 7 | Separate Power Supply |
| 4 | Liquid Line Solenoid (Pump Down) | 8 | Other Parts or Hardware to Complete Installation |

THREE DOOR FREEZER

230V/50 Hz Application

All parts are the same as 115V/60 Hz application with the following exceptions:

	Up to SN 930680014	Beginning With SN 930680014
CONTROL BOX		
Relay	2408233	None
Defrost Timer	No Longer Available	No Longer Available
Run Capacitor	(See Page 19)	
Start Capacitor	(See Page 19)	
Start Relay	(See Page 19)	
CONDENSER		
Compressor	No Longer Available	† 7628003
Condenser Fan Motor	† 2412823	2412829
Power Cord	No Longer Available	No Longer Available
EVAPORATOR		
Evaporator Fan Motor	No Longer Available	No Longer Available
Appliance Light Bulb	No Longer Available	No Longer Available
Condensate Vaporizer	2202303	2202303
Defrost Calrod Heater	No Longer Available	No Longer Available

† Refer to Cross Reference Guide

COMPRESSOR COMPONENTS FOR THREE DOOR FREEZER

208-230V/60 Hz/1 Ph

Compressor Model Number	Start Relay	Start Capacitor	Run Capacitor
Copeland KAJ3-0100-CAV-800	2007579	† 8504223	No Longer Available
Bristol L51B652BBCB	No Longer Available	8503643	† 8503413
Bristol L61B752BBCB	No Longer Available	8503643	8503933
Tecumseh AWA2460ZXD	2007579	8505723	000001395

230V/50 Hz/1 Ph

Compressor Model Number	Start Relay	Start Capacitor	Run Capacitor
Bristol L51B562BBKB	No Longer Available	8503643	8504003
Bristol L61B752BBCB	No Longer Available	8503643	8503933
Tecumseh AWA2460ZXC	2007559	8505513	No Longer Available

† Refer to Cross Reference Guide

INTENTIONALLY LEFT BLANK