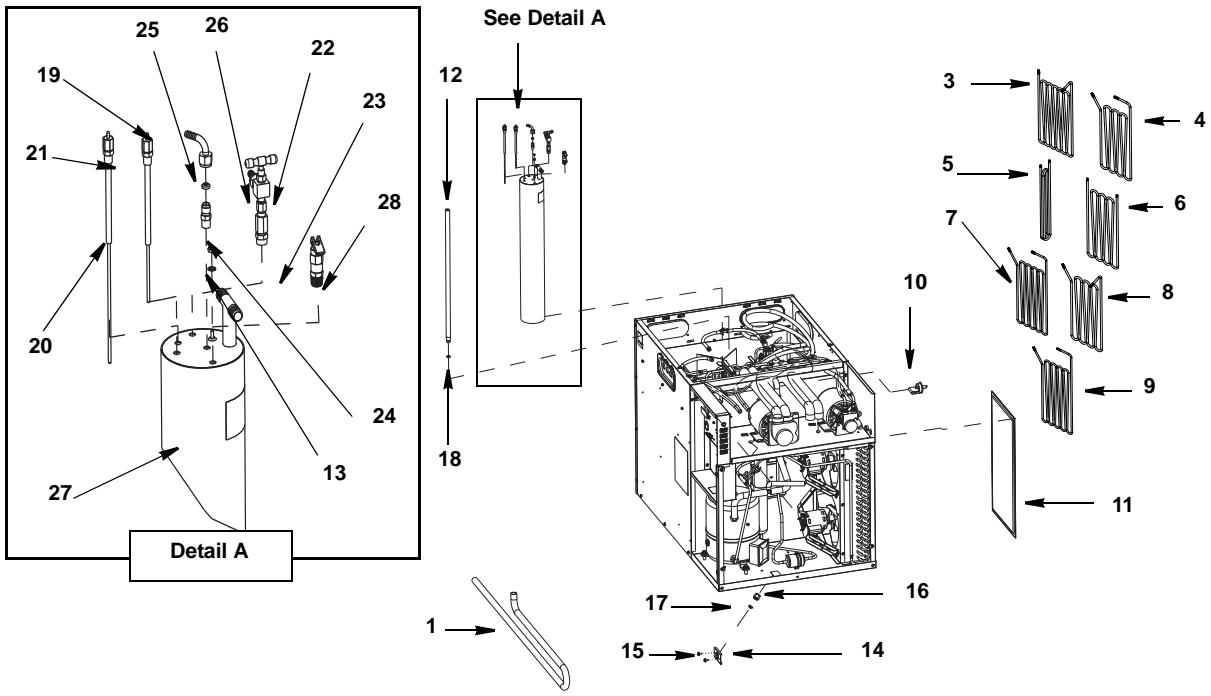




Model 42 & 44 (SS & TS) Series Soda Post-Mix Refrigeration Unit Parts List for Models

42MA04	44MRX04T
42MR04	44MWX04T
42MW04	44MAX04
42MAX04	44MRX04
42MRX04	44MWX04
42MWX04	44GA04
44EAX04	44GR04
44ERX04	44GW04
44EWX04	44GAX04T
44MA04	44GRX04T
44MR04	44GAX04
44MW04	44GRX04
44MAX04T	44GWX04

TUBES, FILTER & CARBONATOR



Applies To:
 SS904480-261
 SS904481-261
 SS904482-261
 SS904496-251
 SS904483-251
 SS904497-251
 SS904484-251
 SS904498-251
 SS904485-251
 SS904450-251
 SS904451-251
 SS904452-251
 TS904480E-261
 TS904481E-261
 TS904482E-261
 TS904496E-251
 TS904497E-251
 TS904498E-251
 TS904247E-261
 TS904248E-261
 TS904249E-261
 TS904250E-251
 TS904251E-251
 TS904252E-251
 TS904480G-261
 TS904496G-251
 HC904496G-251
 TS904482G-261
 TS904498G-251
 HC904498G-251
 TS904481G-261
 TS904497G-251
 HC904497G-251

DESCRIPTION

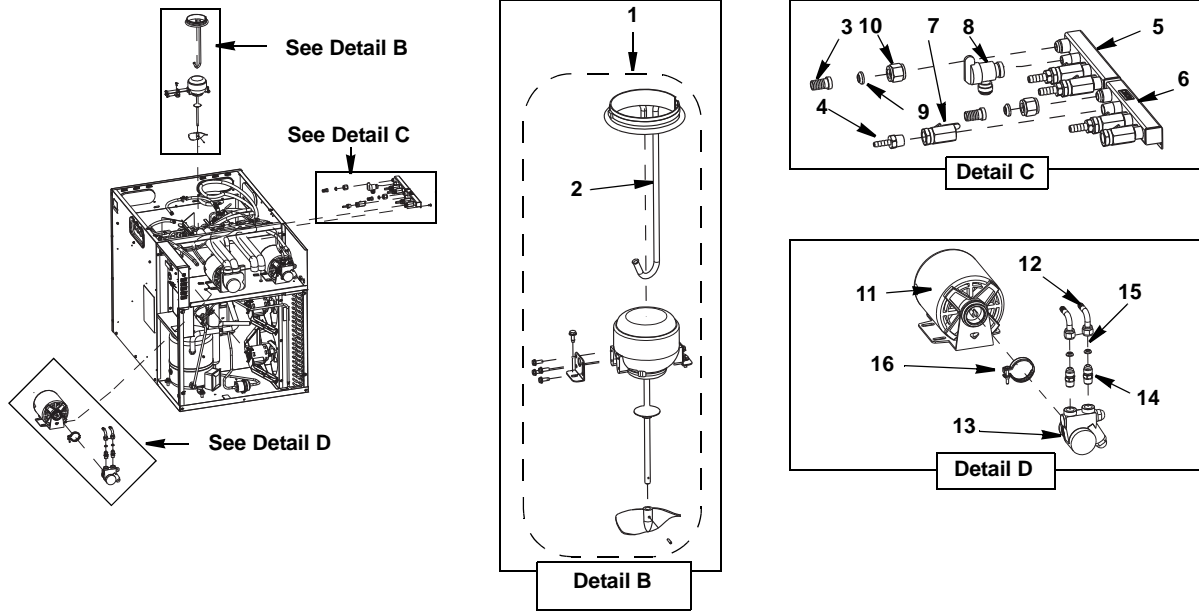
1	Tube Rubber.75ID x.125w x72 (Model 44 only)	00000979
2	Switch Cover	00001755
3	Coil Assy Plain Water 44M	3002113
4	Coil Assy Circ. Inlet/outlet (Model 44 only)	3002063
5	Coil Syrup 3/8OD X 11.5ft SS 44	3002153
6	Coil Syrup 3/8 ODX15ft S/SMOD	3002093
7	Coil Assy Pre-cool Primary	3002123
8	Coil Assy Circulating Outlet	3002103
9	Coil Assy Pre-cool Second	3002053
10	Switch, press. 4psi Low Water	2002743
11	Filter Air	4040163
12	Pipe, Stand - 24.25 Lg	3001723
13	Adaptor, 1/4MF x 1/8MPT.90 S/S	00216384
14	Bracket, Hose Retainer	6052031
15	Screws Bracket, Hose Retainer	5001673
16	Tub Drain Fitting	5001063
17	Drain Nut	00206387
18	O-ring, Rubber -.750 Od X.625 Id	5001613

Detail A (Carbonator Tank)

19	Electrode Assembly, 11.6" (29.4 cm) Carbonator, White (Model 44 only)	Y0212104
20	Electrode Assembly, 8.9" (22.6 cm) Carbonator, Black	Y0212105
21	Electrode Assembly, 6.2" (15.7 cm) Carbonator, Red	Y0212106
22	Valve, Shut Off 1/4 X 1/4	8251513
23	Single Check Valve 1/8 NPT SS	00701312
24	Washer, Tapered -.250 Flare	5001823
25	Barb-stem Ell - 1/4x1/4 Swv S/s	5001903
26	Barb-stem Adpt 1/4barbx1/4sw (Model 44 only)	5001873
27	Tank, Carb - Assy	3001743
28	Valve, Toggle Relif 150# 1/8mpt	00701334

PART NO.

AGITATOR, MANIFOLD, CARB PUMP & MOTOR



Applies To:
 SS904480-261
 SS904481-261
 SS904482-261
 SS904496-251
 SS904483-251
 SS904497-251
 SS904484-251
 SS904498-251
 SS904485-251
 SS904450-251
 SS904451-251
 SS904452-251
 TS904480E-261
 TS904481E-261
 TS904482E-261
 TS904496E-251
 TS904497E-251
 TS904498E-251
 TS904247E-261
 TS904248E-261
 TS904249E-261
 TS904250E-251
 TS904251E-251
 TS904252E-251
 TS904480G-261
 TS904496G-251
 HC904496G-251
 TS904482G-261
 TS904498G-251
 HC904498G-251
 SS904481G-261
 SS904497G-251
 HC904497G-251

DESCRIPTION

Detail B (Agitator Motor)

1	Motor Assembly Kit (Agitator w/Heat Sink Tube) Domestic/International - 230 VAC, 50/60 Hz.	00213237
a.	Agitator Motor Mounting Bracket.	00215727
b.	Water Slinger Washer	00377102
c.	Plastic Propeller	00751208
d.	Internal Tooth Washer	00856302
e.	Tab-clamp 3.909-4.035 SS	00859119
f.	Roll Pin 3/32 X 9/16 SS	00859503
g.	Electrical Sleeve Tubing	RM156120
h.	Agitator Motor 25w 230/50/60	00213018
2	Heat Sink Tube Asm And Clamp	6052321

Detail C (Manifold)

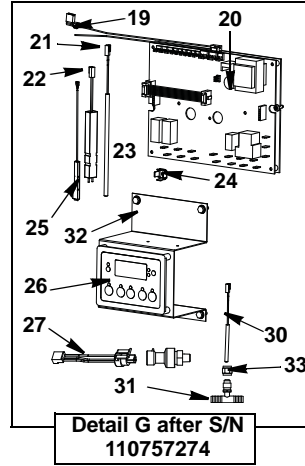
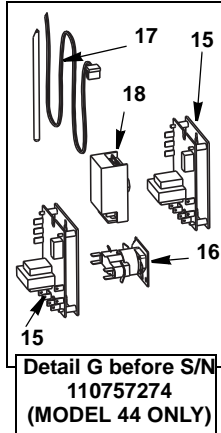
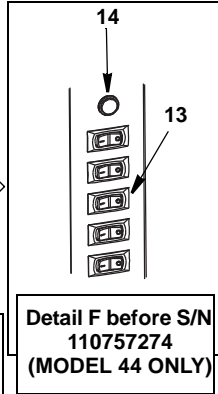
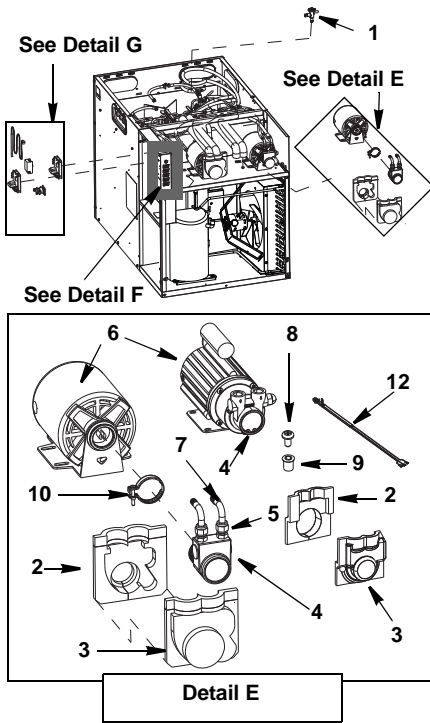
3	Barb-stem Adpt 1/2barbx1/2sw.	5001983
4	Adapter -.250 Barbx.375 Mpt	5001963
5	Manifold Water 3 Outlet	000001973
6	Manifold Water 3 Outlet (Model 44 only)	000002232
7	Valve Ball 3/8 Fptx3/8 Fpt Bras.	5001023
8	Valve, shutoff-1/4 Turn,jg,1/4fptx3/8 Tube	5001343
9	Washer Tapered-.50 Flare-nyl	5001793
10	Nut SWV 1/2 Flare NP Brass	5002033

Detail D (Carbonator Motor & Pump)

11	Motor - 230V, 1/3hp	2002543
12	Adaptor, Elbow 3/8 SWV x 3/8 Barb	5001943
13	Pump, 100 Gph-brass,fltr,250 Psi	2002763
14	Coupling-3/8 Flare X 3/8 Npt	8332023
15	Washer Tapered-.38 Flare-nyl	5001833
16	Clamp Pump Carb	2002753

PART NO.

BASE PARTS LIST

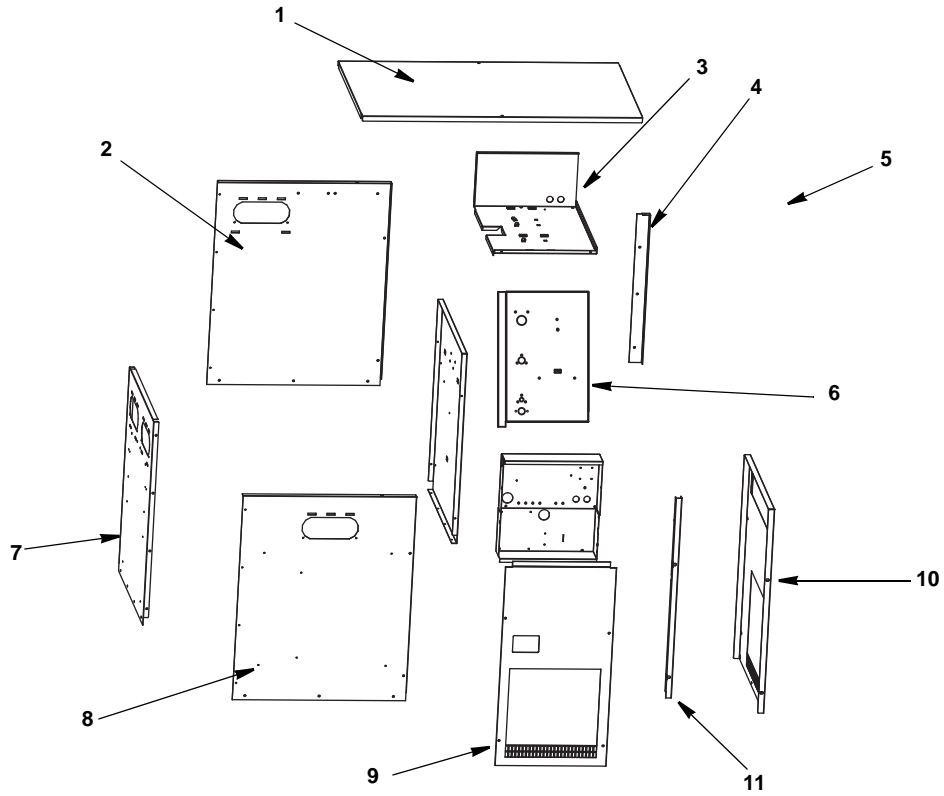


Applies To:
 SS904480-261
 SS904481-261
 SS904482-261
 SS904496-251
 SS904483-251
 SS904497-251
 SS904484-251
 SS904498-251
 SS904485-251
 SS904450-251
 SS904451-251
 SS904452-251
 TS904480E-261
 TS904481E-261
 TS904482E-261
 TS904496E-251
 TS904497E-251
 TS904498E-251
 TS904247E-261
 TS904248E-261
 TS904249E-261
 TS904250E-251
 TS904251E-251
 TS904252E-251
 TS904480G-261
 TS904496G-251
 HC904496G-251
 TS904482G-261
 TS904498G-251
 HC904498G-251
 TS904481G-261
 TS904497G-251
 HC904497G-251

DESCRIPTION

	PART NO.
1 Thermal Expansion Valve	
a. Non-ERC Units	8251483
b. ERC Units	000003206
Detail E (Circulator Motor & Pump)	
2 Boot Front, Motor Pump	
a. All Other Model 44M	4010243
b. For Model 44G only	020003214
3 Boot Rear, Motor Pump	
a. All Other Model 44M	4010253
b. For Model 44G only	020003212
4 Pump	
a. 100 Gph - S/Steel	2002753
b. 100 Gph - S/Steel w/Bypass (Model 44G only)	020003449
5 Adaptor, 3/8mf X 3/8 Mpt S/S	5001803
6 Motor	
a. 230V, 1/3hp Motor only	2002543
b. 230/115V 50/60HZ with Pump (Model 44G only)	020003095
c. 230/115 50/60 HZ Motor only (Model 44G only)	020003769
7 Adaptor, Elbow 3/8 SWV x 3/8 Barb	5001943
8 Model 44G Only - SCR-PAN HD PHIL ZC.25-20X.50	000008884
9 Model 44G Only - INSERT-THD NUT.25-20ID ALUM	000008883
10 Clamp Pump Carb	000006753
11 Motor Shelf (Not Shown)	
a. All Other Model 44M	000002652
b. For Model 44G only	000008466
12 Harness Motor/Pump	
a. All Other Model 44M	000001462
b. For Model 44G only	020003207
Detail F (Switches Non-ERC Model 44 only)	
13 Switch, Rocker - SPST, 16a	2002893
14 Lamp Ind 250v Red W/3/16 Tabs	2002523
Detail G (Liquid Level & Ice Bank Controls Non-ERC Model 44 only)	
15 Liquid Level Control	
a. Domestic - 120V	00219104
b. International - 220V	00219105
16 Relay, therm. Time Delay Dpstnc	2002483
17 Sensor, Elec. Ice Bank Cntrl	2002733
18 Ctrl Elec Ice Bank 230v 1H1	020001414
Detail G (ERC Controls Model 42 & 44)	
19 HPCO Wiring Harness	020002329
20 Control Board	020001985
21 Water/Glycol Water Bath temperature sensor	020002142
22 Water Level Sensor	020002143
23 Ribbon Cable	020001987
24 Ground Terminal	000001452
25 Ice Bank Control	020002091
26 Display Keypad	020001986
27 Pressure Switch Wiring Harness	020002070
28 Pressure Switch	020001992
29 Key pad Mounting Screws	000001986
30 Recirc Temperature Sensor (Model 44 only)	020001991
31 Tee	5003143
32 Bracket	000003157
33 Nut (Model 44 only)	5002003

PANELS



Applies To:
 SS904480-261
 SS904481-261
 SS904482-261
 SS904496-251
 SS904483-251
 SS904497-251
 SS904484-251
 SS904498-251
 SS904485-251
 SS904450-251
 SS904451-251
 SS904452-251
 TS904480E-261
 TS904481E-261
 TS904482E-261
 TS904496E-251
 TS904497E-251
 TS904498E-251
 TS904247E-261
 TS904248E-261
 TS904249E-261
 TS904250E-251
 TS904251E-251
 TS904252E-251
 TS904480G-261
 TS904496G-251
 HC904496G-251
 TS904482G-261
 TS904498G-251
 HC904498G-251
 TS904481G-261
 TS904497G-251
 HC904497G-251

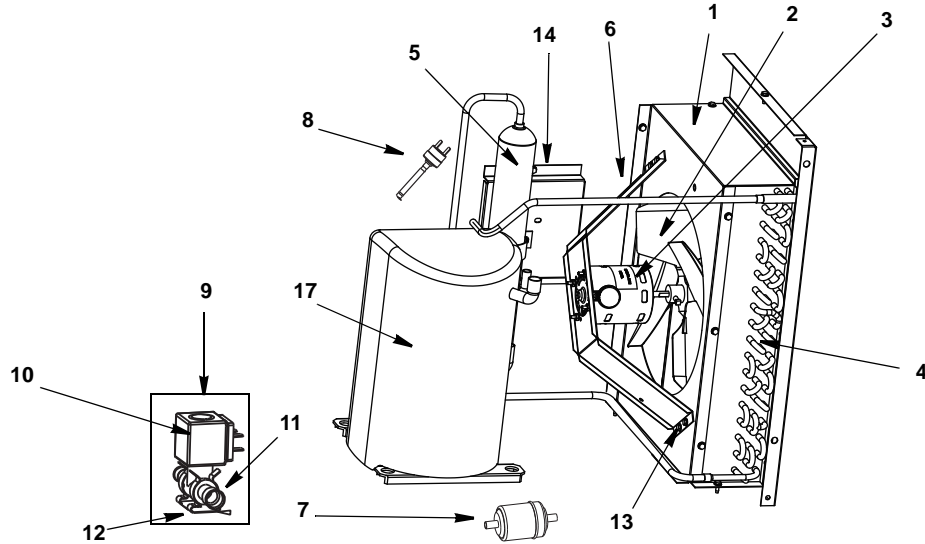
DESCRIPTION

1	Top Cover Panel	
2	Panel	
3	Panel	
4	Panel	
5	Panel	
6	Panel	
7	Left Side Panel	
8	Panel	
9	Front Panel	
10	Right Side Panel	
11	Corner Frame	
12	Remote + Water (not shown)	

PART NO.

6051791
00002649
00002652
00002657
00002647
00002653
00002650
00002648
00002953
00002651
00002654
00002658

AIR COOLED PARTS

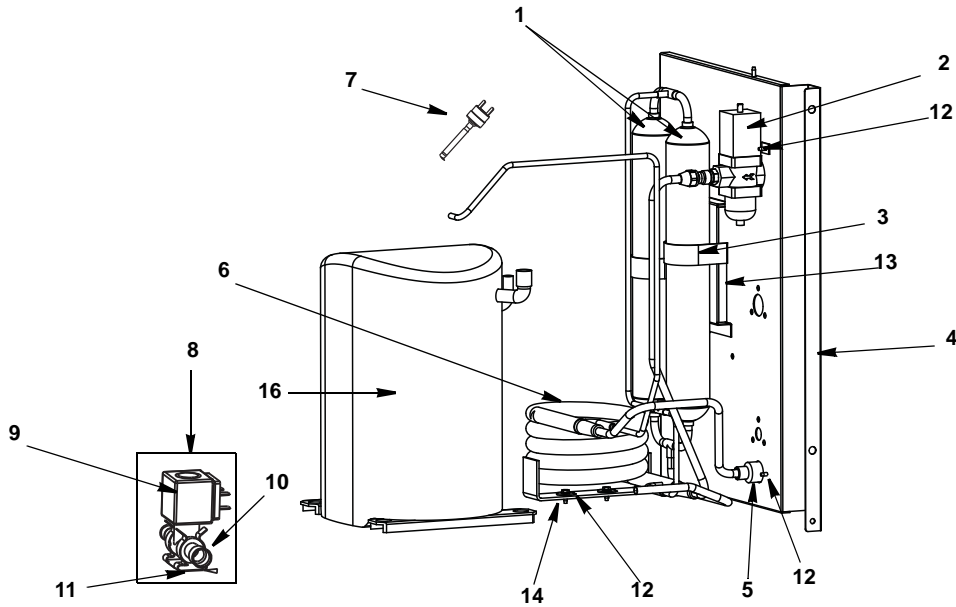


Applies To:
 SS904480-261
 SS904496-251
 SS904483-251
 SS904450-251
 TS904480E-261
 TS904496E-251
 TS904247E-261
 TS904250E-251
 TS904480G-261
 TS904496G-251

DESCRIPTION

	PART NO.
1 Condenser Housing	000002656
2 Fan	2416203
3 Fan Motor 220V/50/60Hz	00753725
4 Condenser Coil	000002689
5 Receiver	8900353
6 Fan Motor Bracket	6072461
7 Drier	8930279
8 High Pressure Cutout Control (Model 44 Only)	2001243
9 Liquid Line Solenoid Assembly Kit	
a. 230VAC - Valve/Solenoid/Coupler For Units Prior to Serial 110952651	7630091
10 Solenoid	
a. 230V	000005157
11 Refrigerant Solenoid Valve	
a. Solenoid EVU4 Valve (.500 in - .375 out) For Units Prior to Serial 110952651	8251373
b. Valve Refrigerant Solenoid EVUL3 (3/8in x 3/8in) For Serial 110952651 and Up	000006495
Miscellaneous – Brackets, Screws, etc.	
12 Danfoss Valve Bracket For Units Prior to Serial 110952651	000000805
13 Screw	5202063
14 Receiver Bracket	000001329
15 REF Manifold (not shown)	000001426
16 Sensors	
a. Suction Line Temp	020001991
b. Discharge Line Temp	020001991
c. Circ A Temp	020001991
d. Circ B Temp	020001991
17 Compressor	
a. Domestic - 230V 1PH 60HZ 1HP (For SS Units)	8251453
• Relay	2002563
• Start Cap	8503143
• Run Cap	000001396
b. Domestic - Copeland 208-230/60/1 1HP (For TS & ERC Units)	000001736
• Relay	2007539
• Start Cap	8503853
• Run Cap	8503933
c. International - Copeland 208-230/50 1HP (For SS Units)	00219080
• Relay	2004333
• Start Cap	2004343
• Run Cap	00215798
• Protector	00217389
d. International - Copeland 208-230 / 50 HZ 1HP (For TS & ERC Units)	000001738
• Relay	2007549
• Start Cap	8505513
• Run Cap	8503933

WATER COOLED PARTS

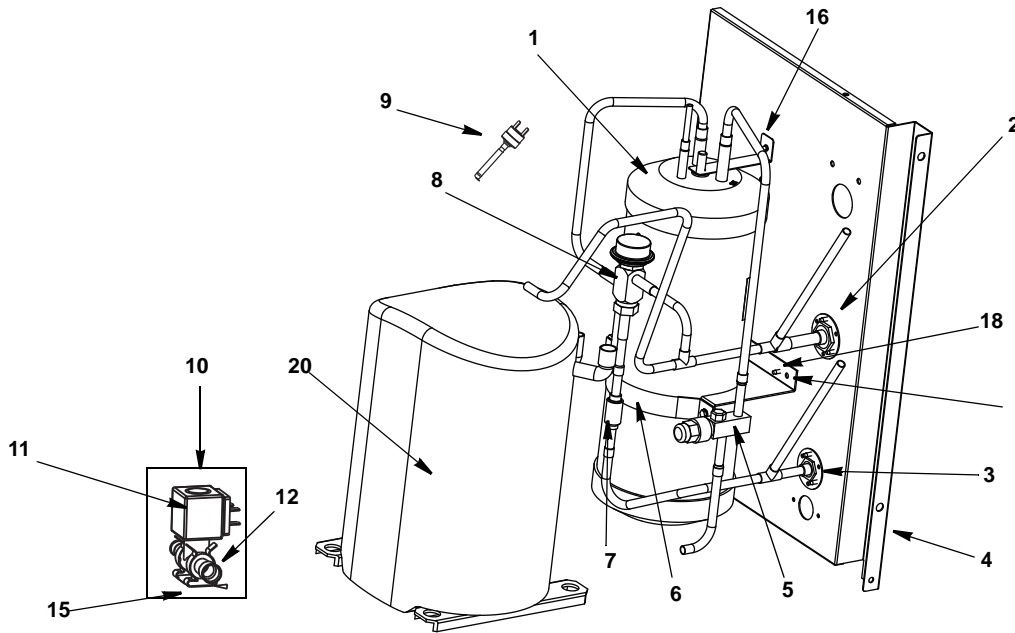


Applies To:
 SS904482-261
 SS904498-251
 SS904485-251
 SS904452-251
 TS904482E-261
 TS904498E-251
 TS904249E-261
 TS904252E-251
 TS904482G-261
 TS904498G-251

DESCRIPTION

	PART NO.
1 Receiver	8900353
2 Water Regulating Valve	8372069
3 Receiver Strap	6020541
4 Panel	000002658
5 Female Adapter	8706083
6 Water Condenser	000000046
7 High Pressure Cutout Control (Model 44 Only)	2001243
8 Liquid Line Solenoid Assembly Kit	
a. 230VAC - Valve/Solenoid/Coupler For Units Prior to Serial 110952651	7630091
9 Solenoid	
a. 230V	000005157
10 Refrigerant Solenoid Valve	
a. Solenoid EVU4 Valve (.500 in - .375 out) For Units Prior to Serial 110952651.	8251373
b. Valve Refrigerant Solenoid EVUL3 (3/8in x 3/8in) For Serial 110952651 and Up	000006495
Miscellaneous – Brackets, Screws, etc.	
11 Danfoss Valve Bracket For Units Prior to Serial 110952651	000000805
12 Screw	5202063
13 Receiver Bracket	000001329
14 Washer	5573413
15 Sensors	
a. Suction Line Temp	020001991
b. Discharge Line Temp	020001991
c. Circ A Temp	020001991
d. Circ B Temp	020001991
16 Compressor	
a. Domestic - 230V 1PH 60HZ 1HP (For SS Units)	8251453
• Relay	2002563
• Start Cap	8503143
• Run Cap	000001396
b. Domestic - Copeland 208-230/60/1 1HP (For TS & ERC Units)	000001736
• Relay	2007539
• Start Cap	8503853
• Run Cap	8503933
c. International - Copeland 208-230/50 1HP (For SS Units)	00219080
• Relay	2004333
• Start Cap	2004343
• Run Cap	00215798
• Protector	00217389
d. International - Copeland 208-230 / 50 HZ 1HP (For TS & ERC Units)	000001738
• Relay	2007549
• Start Cap	8505513
• Run Cap	8503933

REMOTE COOLED PARTS

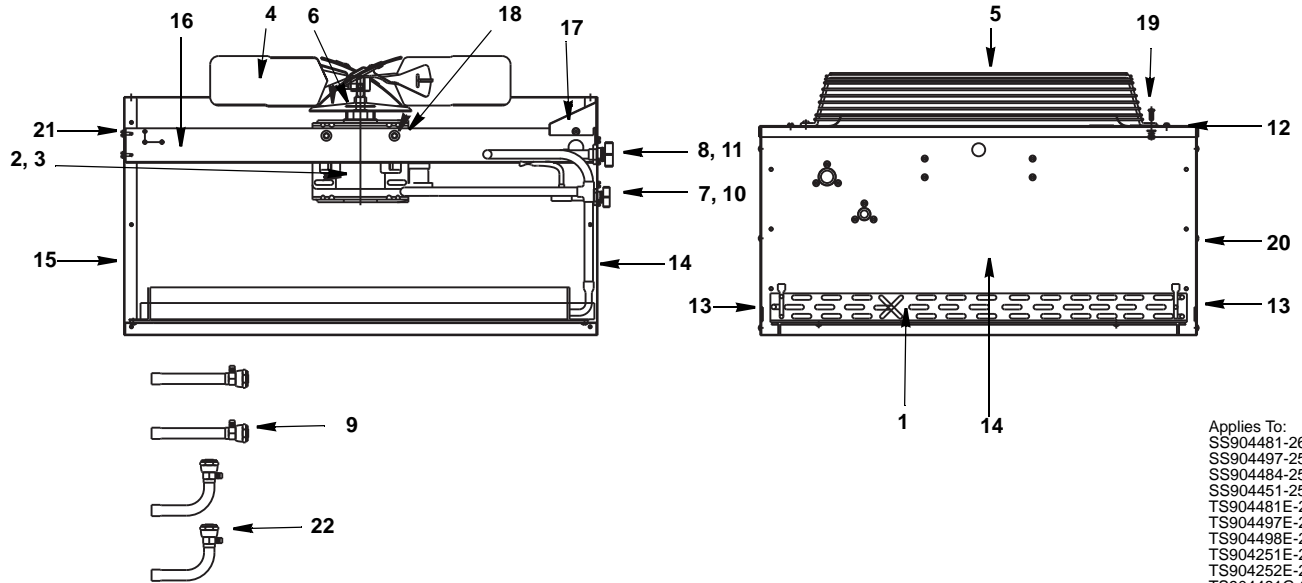


Applies To:
 SS904481-261
 SS904497-251
 SS904484-251
 SS904451-251
 TS904481E-261
 TS904497E-251
 TS904498E-251
 TS904251E-251
 TS904252E-251
 TS904481G-261
 TS904497G-251

DESCRIPTION

DESCRIPTION	PART NO.
1 Receiver	7629573
2 Top Quick Connector	8360063
3 Bottom Quick Connector	8360053
4 Panel	00002658
5 Shut Off Valve.	8373169
6 Receiver Strap	6020541
7 Check Valve	8373149
8 Head Pressure Control Valve	00209235
9 High Pressure Cutout Control (Model 44 Only)	2001243
10 Liquid Line Solenoid Assembly Kit	
a. 230VAC - Valve/Solenoid/Coupler For Units Prior to Serial 110952651	7630091
11 Solenoid	
a. 230V	000005157
12 Refrigerant Solenoid Valve	
a. Solenoid EVU4 Valve (.500 in - .375 out) For Units Prior to Serial 110952651	8251373
b. Valve Refrigerant Solenoid EVUL3 (3/8in x 3/8in) For Serial 110952651 and Up	000006495
13 Liquid Line Solenoid Wiring Harness - NOT SHOWN	000001460
14 Evaporator	000010581
Miscellaneous – Brackets, Screws, etc.	
15 Danfoss Valve Bracket For Serial 110952651 and Previous	000000805
16 Top Receiver Bracket	000000412
17 Bottom Receiver Bracket	6000561
18 Screw	5202063
19 Sensors	
a. Suction Line Temp	020001991
b. Discharge Line Temp	020001991
c. Circ A Temp	020001991
d. Circ B Temp	020001991
20 Compressor	
a. Domestic - 230V 1PH 60HZ 1HP (For SS Units)	8251453
• Relay	2002563
• Start Cap	8503143
• Run Cap.	000001396
b. Domestic - Copeland 208-230/60/1 1HP (For TS & ERC Units)	000001736
• Relay	2007539
• Start Cap	8503853
• Run Cap.	8503933
c. International - Copeland 208-230/50 1HP (For SS Units)	00219080
• Relay	2004333
• Start Cap	2004343
• Run Cap.	00215798
• Protector	00217389
d. International - Copeland 208-230 / 50 HZ 1HP (For TS & ERC Units)	000001738
• Relay	2007549
• Start Cap	8505513
• Run Cap.	8503933

REMOTE CONDENSER TS0895



Applies To:
 SS904481-261
 SS904497-251
 SS904484-251
 SS904451-251
 TS904481E-261
 TS904497E-251
 TS904498E-251
 TS904251E-251
 TS904252E-251
 TS904481G-261
 TS904497G-251

DESCRIPTION

	PART NO.
1 Air Condenser	8850629
2 Fan Motor (208-230V 50/60 Hz/1 Ph)	2009673
3 Fan Motor Run Capacitor	
a. Emerson	8504583
b. Magnatec	N/A
4 Fan Blade	2416113
5 Fan Guard	3400643
6 Rain Slinger	2415053
7 Coupling – Male, 5/8-18	8360343
8 Coupling – Male, 1-1/6-12	8360353
9 Female Line Set Coupling Kit (Sold as Finished Goods Sales Kit)	Sales K0129

Miscellaneous – Brackets, Screws, Etc.

10 Coupling Mounting Flange (for 5/8-18)	8360053
11 Coupling Mounting Flange (for 1-1/16-12)	8360063
12 Top Cover	6017751
13 Panel – Side	6017741
14 Panel – Rear	6017731
15 Panel – Front	6017721
16 Fan Motor Mounting Bracket	6017681
17 Electrical Box Cover	6017761
18 Fan Motor Mounting Screw (5/16-18 x 5/8)	5035659
a. Fan Motor Mounting Flat washer	5573099
b. Fan Motor Mounting Lock washer	5573139
c. Fan Motor Mounting Hexnut	5429759
19 Fan Guard Mounting Screw (1/4-20 x 5/8)	5033459
a. Fan Guard Mounting Flat washer	5573049
b. Fan Guard Mounting Lock washer	5545119
c. Fan Guard Mounting Hex nut	5429529
20 Panel/Condenser Mounting Screw (#8 x 1/2)	5121539
a. Panel/Condenser Mounting Lock washer	5544599
21 Screw (#10-24 x 1/2)	5202069
22 Valve Cores (used in line sets)	7626843
23 Legs (Not shown)	6017691