



# MARKET FORGE

**IMPORTANT FOR FUTURE REFERENCE**

Please complete this information and retain this manual for the life of the equipment:

Model #: \_\_\_\_\_

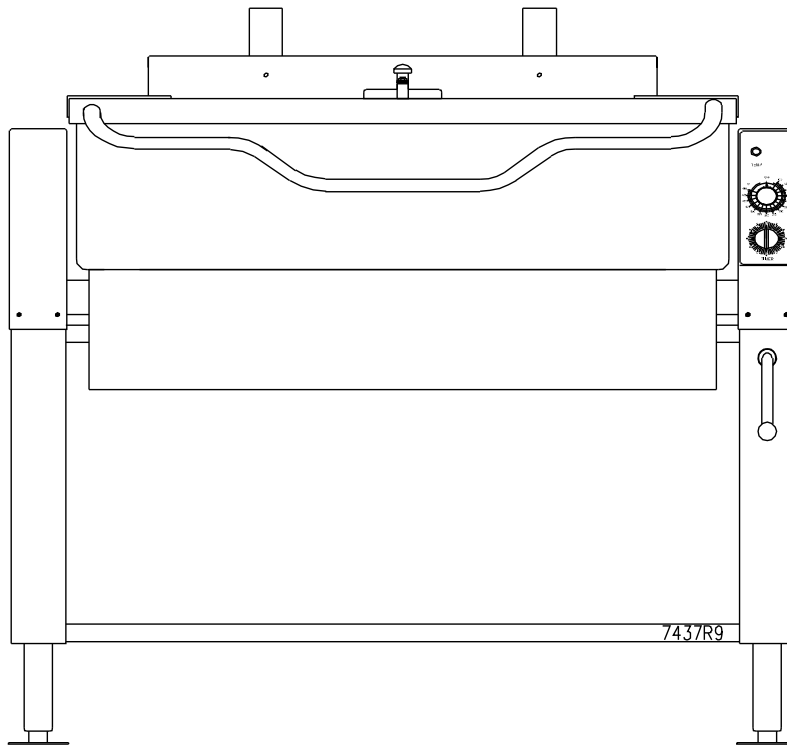
Serial #: \_\_\_\_\_

Date Purchased: \_\_\_\_\_

## PARTS LIST

### UniVerse Plus- Gas Tilting Skillet


30P-ST; L (-LX) 40P-ST; L (-LX) 30P-ST; M (-LX) 40P-ST; M (-LX)



### WARNING

Improper installation, adjustment, alteration, service or maintenance can cause property damage, injury or death. Read the installation, operating and maintenance instructions thoroughly before installing or servicing this equipment.

### CROWN FOOD SERVICE EQUIPMENT

 A Middleby Company

70 Oakdale Road, Downsview (Toronto) Ontario, Canada, M3N 1V9

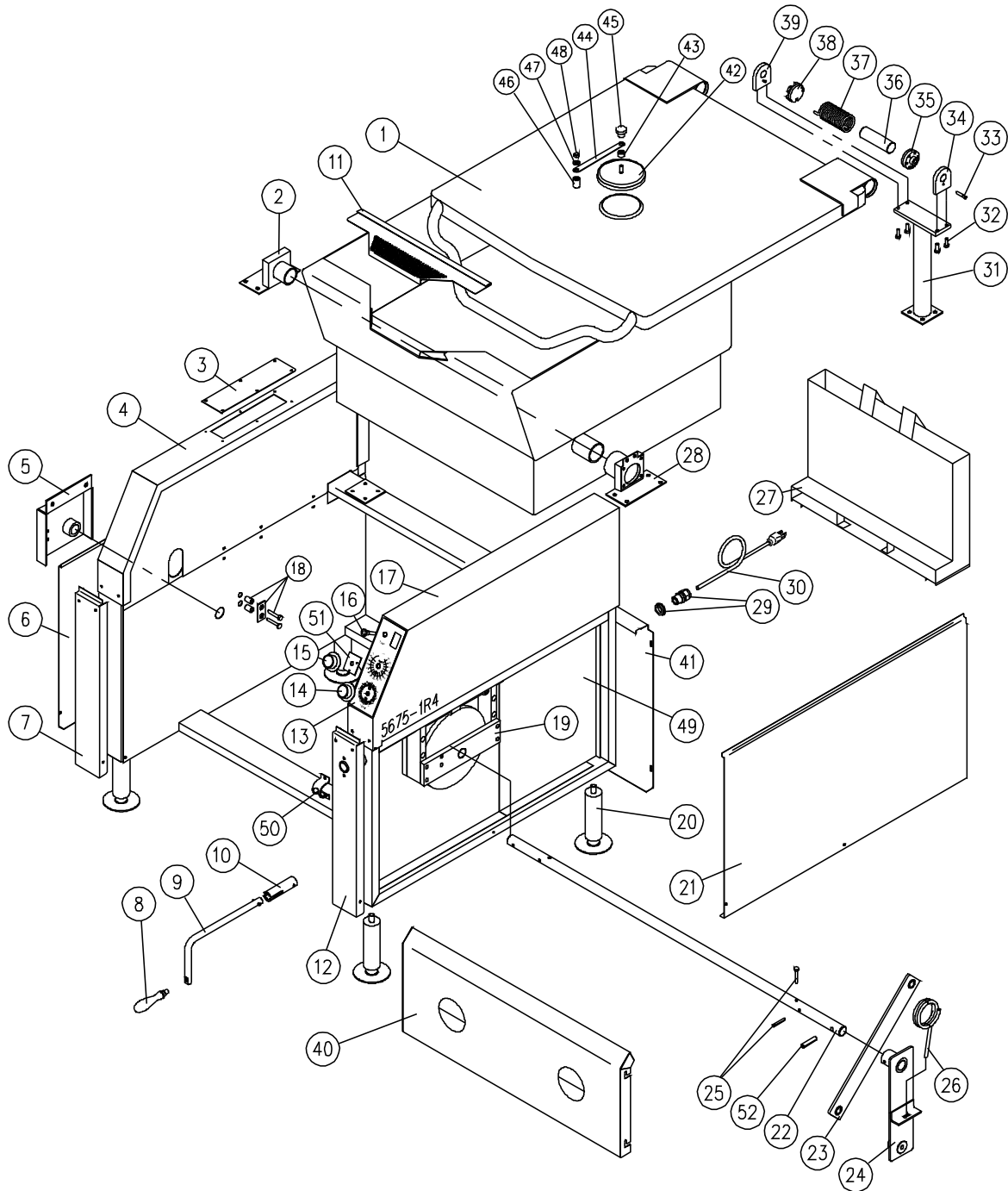
Telephone: 919-762-1000 [www.crownsteamgroup.com](http://www.crownsteamgroup.com)

Printed in Canada



PARTS LIST, GAS FIRED FRYING & BRAISING PANS, MODELS: 30P-STGL, 30P-STGL-LX,  
40P-STGL, 40P-STGL-LX, 30P-STGM, 30P-STGM-LX, 40P-STGM, 40P-STGM-LX

**FIGURE 1**



PARTS LIST, GAS FIRED FRYING & BRAISING PANS, MODELS: 30P-STGL, 30P-STGL-LX,  
40P-STGL, 40P-STGL-LX, 30P-STGM, 30P-STGM-LX, 40P-STGM, 40P-STGM-LX

**FIGURE 1**

| <u>ITEM</u> | <u>PART No.</u> | <u>DESCRIPTION</u>                           | <u>30</u>          | <u>40</u> |   |
|-------------|-----------------|--|--------------------|-----------|---|
| 1.          | 7593-1          | Pan Cover Assembly                           | 1                  |           |   |
|             | 7592-1          | Pan Cover Assembly                           |                    | 1         |   |
| 2.          | 7429-1          | Left Hand Trunnion Assembly                  | 1                  | 1         |   |
| **          | 3.              | 7423-1                                       | Faucet Cover Plate | 1         | 1 |
|             | 8764-1          | Faucet Mounting Plate Pantry Faucet          | 1                  | 1         |   |
|             | 8765-1          | Faucet Mounting Plate Double Faucet          | 1                  | 1         |   |
| 4.          | 7502-1          | Left Hand Console Top Cover                  | 1                  | 1         |   |
| 5.          | 7492-1          | Left Hand Console Tilt Shaft Bearing Bracket | 1                  | 1         |   |
| 6.          | 7416-2          | Lower Console Side Panel, Left Hand          | 1                  | 1         |   |
| 7.          | 7410-1          | Left Hand Console, Front Cover               | 1                  | 1         |   |
| 8.          | 3560-1          | Handle (8-2054-1)                            | 1                  | 1         |   |
| **          | 9.              | 5667-1                                       | Crank Handle       | 1         | 1 |
|             | 5667-2          | Crank Handle (Right Hand Draw-Off Valve)     | 1                  | 1         |   |
| 10.         | 7500-1          | Input Shaft Adaptor                          | 1                  | 1         |   |
| 11.         | 7404-1          | Pour Lip Strainer                            | 1                  | 1         |   |
| 12.         | 7409-1          | Right Hand Front Console Cover               | 1                  | 1         |   |
| **          | 13.             | 5661-1                                       | Decal              | 1         | 1 |
|             | 5661-2          | Decal, with cutout for tilt switch           | 1                  | 1         |   |
| 14.         | 9169-1          | Timer complete with Dial                     | 1                  | 1         |   |
| 15.         | 9148-1          | Thermostat Dial                              | 1                  | 1         |   |
| *           | 9109-1          | Rotary Shaft Seal                            | 1                  | 1         |   |
| 16.         | 4661-2          | Pilot Light - Temperature, Red               | 1                  | 1         |   |
| 17.         | 7501-1          | Right Hand Console Top Cover                 | 1                  | 1         |   |

PARTS LIST, GAS FIRED FRYING & BRAISING PANS, MODELS: 30P-STGL, 30P-STGL-LX,  
40P-STGL, 40P-STGL-LX, 30P-STGM, 30P-STGM-LX, 40P-STGM, 40P-STGM-LX

| <u>ITEM</u> | <u>PART No.</u> | <u>DESCRIPTION</u>                  | <u>30</u>                       | <u>40</u> |   |
|-------------|-----------------|-------------------------------------|---------------------------------|-----------|---|
| 18.         | 5688-1          | Spring Retainer                     | 2                               | 2         |   |
| *           | M50C-51618-112  | Hex HD Screw                        | 4                               | 4         |   |
| *           | F105N-516       | Washer                              | 4                               | 4         |   |
| *           | 5693-1          | Spacer                              | 4                               | 4         |   |
| 19.         | 7403-1          | Gear Box Assembly                   | 1                               | 1         |   |
| **          | 20.             | 5379-1                              | Flanged Adjustable Foot         | 4         | 4 |
|             |                 | 5381-1                              | Swivel Caster, c/w Brake, Front | 2         | 2 |
|             |                 | 5382-1                              | Swivel Caster, Rear             | 2         | 2 |
| 21.         | 7416-1          | Lower Console Side Cover Right Hand | 1                               | 1         |   |
| 22.         | 7427-1          | Tilt Shaft                          | 1                               |           |   |
|             |                 | 7427-2                              | Tilt Shaft                      |           | 1 |
| 23.         | 7419-1          | Tilt Arm Extension                  | 2                               | 2         |   |
| 24.         | 7417-1          | Arm, Lift                           | 2                               | 2         |   |
| 25.         | 9193-2          | Roll Pin                            | 2                               | 2         |   |
|             | M50S-1420-134   | Hex Bolt                            | 2                               | 2         |   |
| 26.         | 9695-1          | Spring, Right Hand                  | 1                               | 1         |   |
|             | 9694-1          | Spring, Left Hand                   | 1                               | 1         |   |
| 27.         | 7588-1          | Flue Assembly                       | 1                               |           |   |
|             | 7589-1          | Flue Assembly                       |                                 | 1         |   |
| 28.         | 7428-1          | Right Hand Trunnion Assembly        | 1                               | 1         |   |
| 29.         | 9176-1          | Liquid Tight Connector              | 1                               | 1         |   |
|             | 9176-2          | Locknut                             | 1                               | 1         |   |
| 30.         | 4127-3          | Cord Set                            | 1                               | 1         |   |
| 31.         | 7424-1          | Post Assembly                       | 2                               | 2         |   |
| 32.         | M50S-1420-34    | Hex HD Screw                        | 8                               | 8         |   |

PARTS LIST, GAS FIRED FRYING & BRAISING PANS, MODELS: 30P-STGL, 30P-STGL-LX,  
40P-STGL, 40P-STGL-LX, 30P-STGM, 30P-STGM-LX, 40P-STGM, 40P-STGM-LX

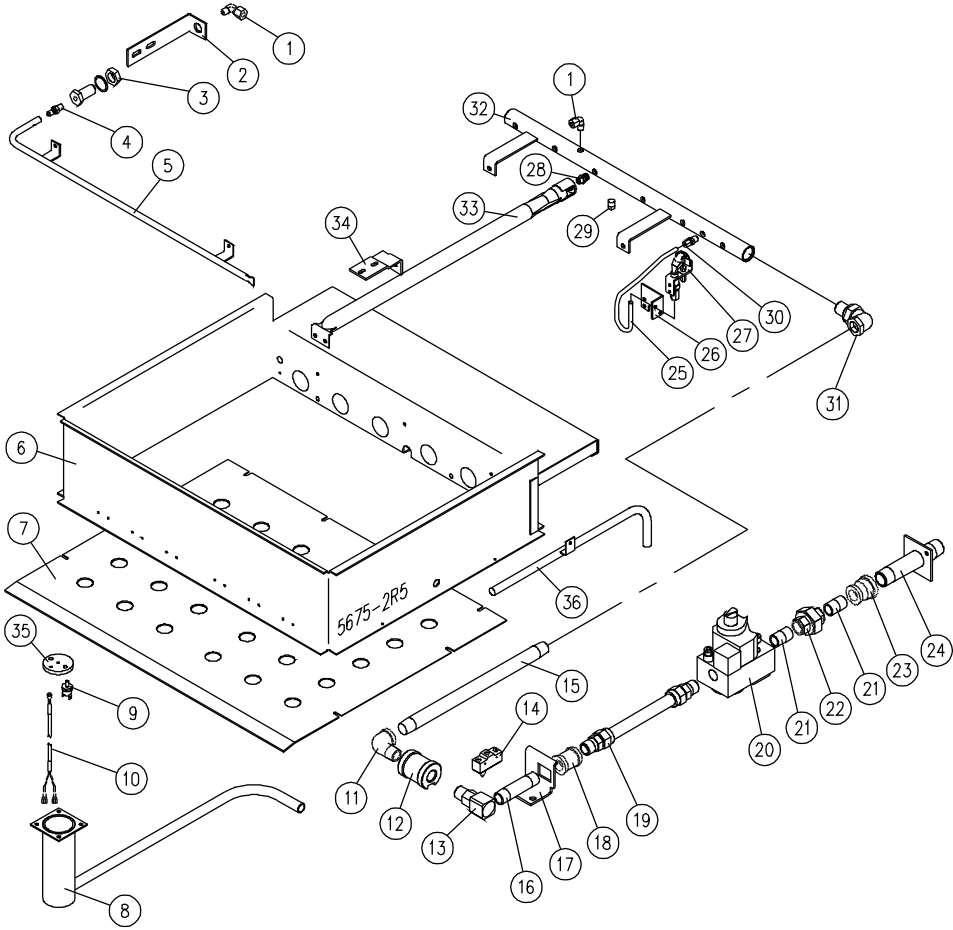
| <u>ITEM</u> | <u>PART No.</u> | <u>DESCRIPTION</u>                | <u>30</u>                            | <u>40</u> |   |
|-------------|-----------------|-----------------------------------|--------------------------------------|-----------|---|
| 33.         | 3725-1          | Lock Pin (8-2029)                 | 2                                    | 2         |   |
| 34.         | 37261           | End Lock Plate (8-2035L)          | 2                                    | 2         |   |
| 35.         | 5428-1          | Stationary Disc                   | 2                                    | 2         |   |
| 36.         | 5430-1          | Core                              | 2                                    | 2         |   |
| 37.         | 4008-1          | Spring (8-2026)                   | 2                                    | 2         |   |
| 38.         | 5429-1          | Rotary Disc                       | 2                                    | 2         |   |
| 39.         | 3727-1          | End Stop Plate (8-2021)           | 2                                    | 2         |   |
| 40.         | 7607-1          | Front Cover Panel (Modular Units) | 1                                    |           |   |
|             | 7607-2          | Front Cover Panel (Modular Units) |                                      | 1         |   |
| 41.         | 7598-1          | Back Cover Panel (Modular Units)  | 1                                    |           |   |
|             | 7598-2          | Back Cover Panel (Modular Units)  |                                      | 1         |   |
| 42.         | 4139-1          | Vent Cover                        | 1                                    | 1         |   |
| 43.         | 4355-1          | Swivel Spacer                     | 1                                    | 1         |   |
| 44.         | 5817-1          | Arm                               | 1                                    | 1         |   |
| 45.         | 9248-1          | Knob                              | 1                                    | 1         |   |
| 46.         | 4355-1          | Swivel Base                       | 1                                    | 1         |   |
| 47.         | F105N-14        | Flat Washer                       | 1                                    | 1         |   |
| 48.         | 9031-5          | Acorn Nut                         | 1                                    | 1         |   |
| **          | 49.             | 7413-1                            | Console Panel (Manual Tilt Skillets) | 1         | 1 |
|             |                 | 7608-1                            | Console Panel (Power Tilt Skillets)  | 1         | 1 |
| 50.         | 5694-1          | Tilt Handle Bracket               | 1                                    | 1         |   |
| 51.         | 5611-1          | Potentiometer Spacer              | 1                                    | 1         |   |
| 52.         | 9032-9          | Spring Pin                        | 2                                    | 2         |   |

\* NOT SHOWN.

\*\* SELECT AS REQUIRED.

PARTS LIST, GAS FIRED FRYING & BRAISING PANS, MODELS: 30P-STGL, 30P-STGL-LX,  
 40P-STGL, 40P-STGL-LX, 30P-STGM, 30P-STGM-LX, 40P-STGM, 40P-STGM-LX

**FIGURE 2**



PARTS LIST, GAS FIRED FRYING & BRAISING PANS, MODELS: 30P-STGL, 30P-STGL-LX, 40P-STGL, 40P-STGL-LX, 30P-STGM, 30P-STGM-LX, 40P-STGM, 40P-STGM-LX

**FIGURE 2**

**BURNER BASKET AND GAS LINE COMPONENTS**

| <u>ITEM</u> | <u>PART NO.</u> | <u>DESCRIPTION</u>                        | <u>30</u> | <u>40</u> |
|-------------|-----------------|---|-----------|-----------|
| 1.          | 9659-1          | Elbow, Brass 90° (3-694A)                 | 2         | 2         |
| 2.          | 3991-1          | Lighter Tube Bracket                      | 1         | 1         |
| 3.          | 9698-1          | Terminal Bolt (3-129B)                    | 1         | 1         |
| ** 4.       | 9-3335-56       | Lighter Tube Orifice, Natural, #56        | 1         | 1         |
|             | 9-3335-72       | Lighter Tube Orifice, Liquid Propane, #72 | 1         | 1         |
| 5.          | 7487-1          | Lighter Tube                              | 1         |           |
|             | 7487-2          | Lighter Tube                              |           | 1         |
| 6.          | 7587-1          | Burner Basket Assembly                    | 1         |           |
|             | 7586-1          | Burner Basket Assembly                    |           | 1         |
| 7.          | 7426-1          | Bottom Cover                              | 1         |           |
|             | 7425-1          | Bottom Cover                              |           | 1         |
| 8.          | 7498-1          | High-Limit Thermocouple Cover             | 1         | 1         |
| 9.          | 4914-2          | High-Limit Safety Thermostat              | 1         | 1         |
| 10.         | 5697-1          | High-Limit and Thermocouple Wire Kit      | 1         | 1         |
|             | 9288-100        | Thermocouple Only                         | 1         | 1         |
| 11.         | 9665-1          | St. Elbow, Brass, (3-116D)                | 1         | 1         |
| 12.         | 5740-1          | Trunion Coupling                          | 1         | 1         |
| 13.         | 9196-1          | Swivel                                    | 1         | 1         |
| 14.         | 9228-1          | Interlock Switch (4-M605)                 | 1         | 1         |
| ** 15.      | 9009-172        | Black Pipe Nipple                         | 1         | 1         |
| 16.         | 9009-034        | Black Pipe Nipple                         | 1         | 1         |
| 17.         | 5741-1          | Swivel Bracket                            | 1         | 1         |
| 18.         | 9042-3          | Coupling                                  | 1         | 1         |
| 19.         | 9026-075        | Corrugated Flex Tube, 1/2 x 7-1/2"        | 1         | 1         |

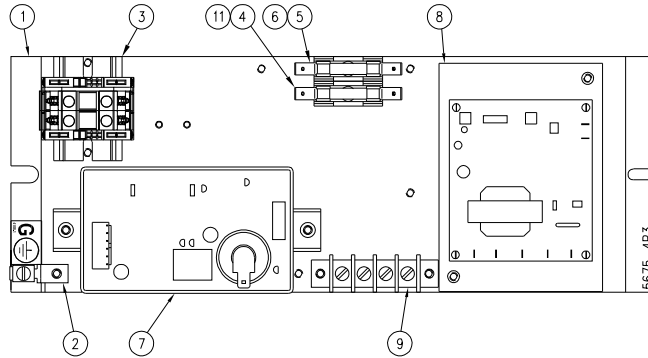
PARTS LIST, GAS FIRED FRYING & BRAISING PANS, MODELS: 30P-STGL, 30P-STGL-LX,  
40P-STGL, 40P-STGL-LX, 30P-STGM, 30P-STGM-LX, 40P-STGM, 40P-STGM-LX

| <u>ITEM</u> | <u>PART NO.</u> | <u>DESCRIPTION</u> | <u>30</u>                        | <u>40</u> |    |
|-------------|-----------------|--------------------|----------------------------------|-----------|----|
| **          | 20.             | 5188-1             | Combination Gas Control, Natural | 1         | 1  |
|             |                 | 5188-2             | Combination Gas Control, Propane | 1         | 1  |
|             | 21.             | 9009-014           | Nipple, 1/2" x 1-1/2"            | 2         | 2  |
|             | 22.             | 9015-3             | Ground Joint Union, 1/2"         | 1         | 1  |
|             | 23.             | 9034-1             | Reducer Bushing, 3/4 x 1/2"      | 1         | 1  |
|             | 24.             | 5691-2             | Gas Supply Pipe, Assembly        | 1         | 1  |
|             | 25.             | 5682-1             | Pilot Tube                       | 1         | 1  |
|             | 26.             | 5678-1             | Pilot Bracket                    | 1         | 1  |
| **          | 27.             | 5171-1             | Pilot Burner Assembly, Natural   | 1         | 1  |
|             |                 | 5171-2             | Pilot Burner Assembly, Propane   | 1         | 1  |
| **          | 28.             | 3598-48            | Burner Orifice, #48, Natural     | 6         |    |
|             |                 | 3598-56            | Burner Orifice, #56, Propane     | 6         |    |
|             |                 | 3598-51            | Burner Orifice, #51, Natural     |           | 10 |
|             |                 | 3598-59            | Burner Orifice, #59, Propane     |           | 10 |
|             | 29.             | 9035-1             | Square Head Pipe Plug, 1/8"      | 1         | 1  |
|             | 30.             | 9666-1             | Connector, Brass (3-684A)        | 1         | 1  |
|             | 31.             | 9697-1             | Union Elbow Assembly (3-U4BE)    | 1         | 1  |
|             | 32.             | 7488-1             | Manifold Assembly                | 1         |    |
|             |                 | 7489-1             | Manifold Assembly                |           | 1  |
|             | 33.             | 7585-1             | Burner                           | 6         | 10 |
|             | 34.             | 7499-1             | Burner Box Mounting Bracket      | 2         | 2  |
|             | 35.             | 5855-1             | Sensor Mounting Disc             | 1         | 1  |
| **          | 36.             | 8264-1             | Thermocouple Tube                | 1         |    |
|             |                 | 8264-2             | Thermocouple Tube                |           | 1  |

\*\* SELECT AS REQUIRED.

PARTS LIST, GAS FIRED FRYING & BRAISING PANS, MODELS: 30P-STGL, 30P-STGL-LX,  
40P-STGL, 40P-STGL-LX, 30P-STGM, 30P-STGM-LX, 40P-STGM, 40P-STGM-LX

**FIGURE 3**



**CONTROL CIRCUIT COMPONENTS**

| <b><u>ITEM</u></b> | <b><u>PART NO.</u></b> | <b><u>DESCRIPTION</u></b>                         | <b><u>QUANTITY</u></b> |
|--------------------|------------------------|---|------------------------|
|                    | 1.                     | 7640-1 Component Mounting Board                   | 1                      |
|                    | 2.                     | 4189-1 Ground Lug (4-35EU)                        | 1                      |
| **                 | 3.                     | 9390-2 Terminal Block Assembly, 2 Pole            | 1                      |
|                    |                        | Includes following parts:                         |                        |
|                    |                        | 9391-1 Modular Terminal                           | 2                      |
|                    |                        | 9392-1 End Plate                                  | 1                      |
|                    |                        | 9393-1 End Clamp                                  | 2                      |
|                    |                        | 9394-053 Mounting Rail                            | 1                      |
| **                 | 4.                     | 9068-1 Fuse Holder, 25A, 300V (LX Model)          | 1                      |
|                    | 5.                     | 9068-1 Fuse Holder                                | 1                      |
| **                 | 6.                     | 9092-3 Fuse, 3A, 250V (120V Unit)                 | 1                      |
|                    |                        | 9092-1 Fuse, 1A, 250V (220V Unit)                 | 1                      |
|                    | 7.                     | 5373-2 Ignition Module, DSI, 3 Trial for Ignition | 1                      |
|                    | 8.                     | 5555-1 Temperature Control                        | 1                      |

PARTS LIST, GAS FIRED FRYING & BRAISING PANS, MODELS: 30P-STGL, 30P-STGL-LX, 40P-STGL, 40P-STGL-LX, 30P-STGM, 30P-STGM-LX, 40P-STGM, 40P-STGM-LX

| <u>ITEM</u> | <u>PART NO.</u> | <u>DESCRIPTION</u>  | <u>QUANTITY</u> |
|-------------|-----------------|---|-----------------|
| 9.          | 3877-2          | Terminal Block, 4 Pole  | 1               |
| *           | 10.             | 4290-100 Transformer, 220-120V, (220V Unit) (4-T265)          | 1               |
| **          | 11.             | 9173-1 Fuse, 3/4 A, Time Delay, 250V, (120V Unit)<br>LX Model | 1               |
|             |                 | 9173-2 Fuse, 0.3A, Time Delay, 250V, (220V Unit)<br>LX Model  | 1               |

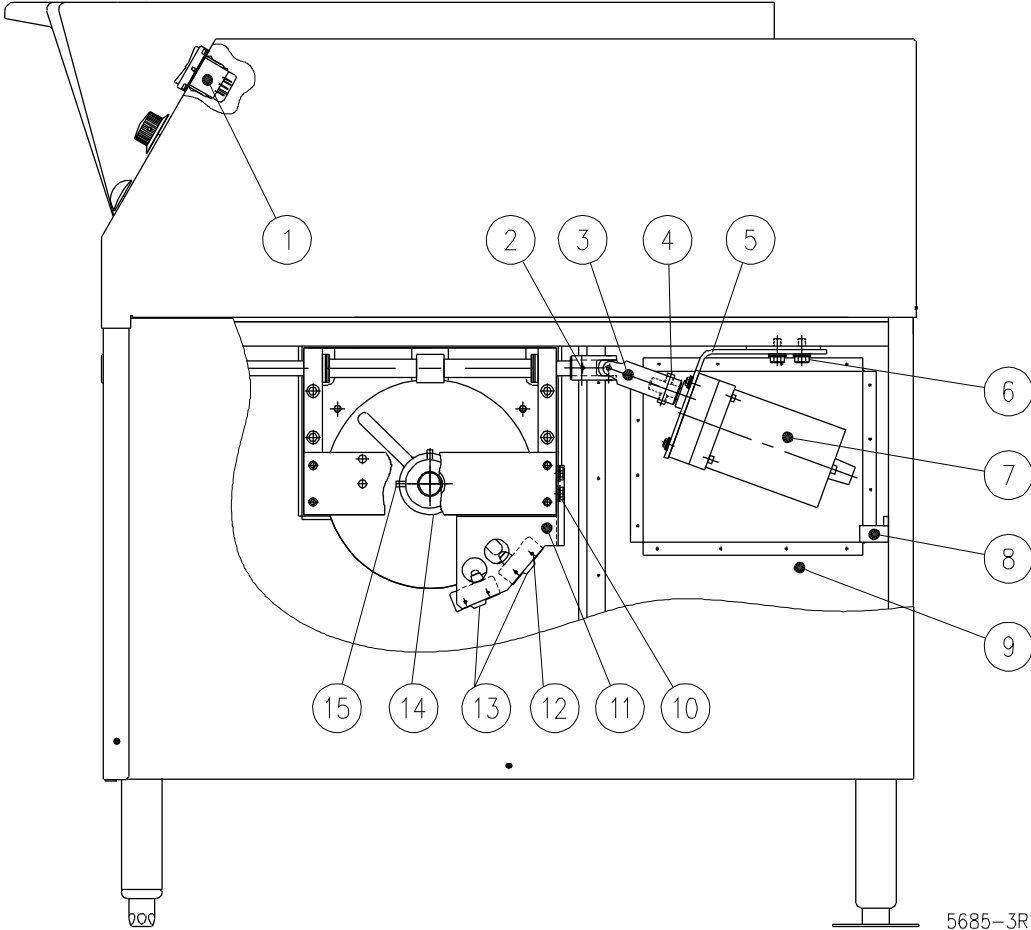
\* NOT SHOWN.

\*\* SELECT AS REQUIRED.

PARTS LIST, GAS FIRED FRYING & BRAISING PANS, MODELS: 30P-STGL, 30P-STGL-LX,  
40P-STGL, 40P-STGL-LX, 30P-STGM, 30P-STGM-LX, 40P-STGM, 40P-STGM-LX

**FIGURE 4**

**OPTIONAL MOTOR TILT COMPONENTS (LX MODELS)**



PARTS LIST, GAS FIRED FRYING & BRAISING PANS, MODELS: 30P-STGL, 30P-STGL-LX, 40P-STGL, 40P-STGL-LX, 30P-STGM, 30P-STGM-LX, 40P-STGM, 40P-STGM-LX

**FIGURE 4**

**OPTIONAL MOTOR TILT COMPONENTS (LX MODELS)**

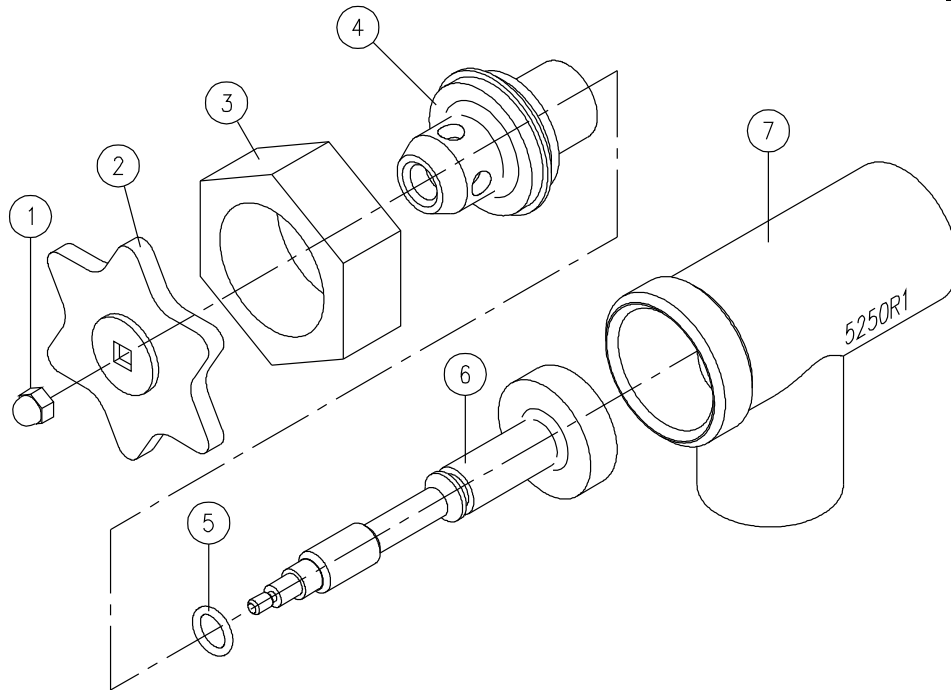
| <u>ITEM</u> | <u>PART NO.</u> | <u>DESCRIPTION</u> | <u>QUANTITY</u>                          |   |
|-------------|-----------------|--------------------|--|---|
|             | 1.              | 9179-1             | Tilt Switch                              | 1 |
|             | 2.              | 9032-7             | Spring Tension Pin (2-T6U5)              | 1 |
|             | 3.              | 9191-1             | Universal Joint                          | 1 |
|             | 4.              | 9061-9             | Set Screw                                | 2 |
|             | 5.              | 7599-1             | Motor Mounting Bracket                   | 1 |
| **          | 6.              | M50S-51618-34      | Hex HD Screw                             | 3 |
|             |                 | F101X-516          | Flat Washer                              | 3 |
|             |                 | S01X-516           | Lock Washer                              | 3 |
| **          | 7.              | 9181-1             | Motor, 1/20 HP, 115V                     | 1 |
|             |                 | 9181-2             | Motor, 1/20 HP, 230V                     | 1 |
| **          | 8.              | 9192-1             | Capacitor, (120V Motor)                  | 1 |
|             |                 | 9192-2             | Capacitor, (230V Motor)                  | 1 |
|             | 9.              | 7608-1             | Motor Access Panel                       | 1 |
|             | 10.             | M50S-1420-12       | Hex HD Screw                             | 2 |
|             | 11.             | 5673-1             | Switch Mounting Bracket                  | 1 |
|             | 12.             | M12C-632-1         | Round Head Screw                         | 4 |
|             | 13.             | 9228-1             | Limit Switch (4-M605)                    | 2 |
|             | 14.             | 5674-1             | Cam Actuator                             | 1 |
|             | 15.             | 9061-4             | Set Screw                                | 2 |
| * **        | 16.             | 9173-1             | Fuse, 3/4 Amp Time Delay (120V Motor)    | 1 |
|             |                 | 9173-2             | Fuse, 0.3A Time Delay, 250V (230V Motor) | 1 |
|             |                 | 9068-1             | Fuse Holder                              | 1 |

\* NOT SHOWN.

\*\* SELECT AS REQUIRED.

PARTS LIST, GAS FIRED FRYING & BRAISING PANS, MODELS: 30P-STGL, 30P-STGL-LX,  
40P-STGL, 40P-STGL-LX, 30P-STGM, 30P-STGM-LX, 40P-STGM, 40P-STGM-LX

**FIGURE 5**



| <u>ITEM</u> | <u>PART NO.</u> | <u>DESCRIPTION</u>                  | <u>QUANTITY</u> |
|-------------|-----------------|-------------------------------------|-----------------|
|             | 4136-1          | 2" DRAW-OFF VALVE ASSEMBLY (3-D020) |                 |
| 1.          | 9031-3          | Acorn Nut, 10 -24 UNC               | 1               |
| 2.          | 4115-1          | Handle                              | 1               |
| 3.          | 4216-1          | Gland Nut (3-DV23)                  | 1               |
| 4.          | 4215-1          | Bonnet (3-DV24)                     | 1               |
| 5.          | 9207-1          | "O" Ring (3-DV26)                   | 1               |
| 6.          | 4217-1          | Stem Assembly (3-DV25RV)            | 1               |
| 7.          | 4218-1          | Valve Body (3-DV27)                 | 1               |
| * 8.        | 7580-1          | Draw-Off Strainer, Optional         | 1               |

\* NOT SHOWN