

OWNER'S MANUAL

MODEL BW4B, BW4B-1, **BW4B-2** SLICER WARMER



Supplier Name: **MARSHALL AIR SYSTEMS, INC.**
Address: 419 Peachtree Drive South
Charlotte, NC 28217

Model #: _____
Serial #: _____

Date Received: _____
Date Installed: _____
Telephone #: 704-525-6230
Fax #: 704-525-6229
Service Referral #: 800-722-3474
Local Service: _____
Local Service #: _____

PRODUCT DESCRIPTION

The Model BW4B series slicer/warmer holds meat on the slicer at or above the minimum required temperature as mandated by food safety codes. The Slicer Warmer is designed to be bolted to a counter or table surface and when properly assembled with either a Globe 4913, 4975, or Hobart 2912 series slicer resting on its base. The Slicer Warmer features Marshall's ThermoGlo™ heating technology. Heat radiates from every square inch of the flat plate surface providing uniform holding temperature and improved moisture retention. The Slicer Warmer heating system replaces heat lamps, bulbs and lamp sockets with a robust unbreakable design that blocks grease vapors from entering the wiring compartment. This Slicer Warmer system is easy to keep clean and mounted on a swivel that pivots to provide easy access to the slicer for adding and removing product. The system then self centers over the slicer with a light touch of the handle. As an added feature, this Slicer Warmer is adjustable to accommodate either a Globe 4913, 4975, or Hobart 2912 series slicer. BW4B is complete unit with large, L-shaped base. BW4B-1 is complete unit with small base. **BW4B-2** is small base only, no heaters

GENERAL SPECIFICATIONS

Model: BW4B, BW4B-1, **BW4B-2** Slicer Warmer
Height: 34.875"
Width: 28.375" BW4B, 35.375" BW4B-1
Depth: 21.250" BW4B, 18.125" BW4B-1
Electrical: 120 VAC, 60Hz, 12 Amps
240 VAC, 50/60Hz 6.1 Available
Power Cord: 8.0 ft 3 wire ground type UL rated
Weight: 36 lbs. BW4B; 30 lbs BW4B-1;
18 lbs. **BW4B-2**
Approvals: ETL, CSA, CE and NSF

FOR YOUR SAFETY

DO NOT STORE OR USE GASOLINE OR OTHER FLAMMABLE VAPORS OR LIQUIDS IN THE VICINITY OF THIS OR ANY OTHER APPLIANCE.

WARNING: IMPROPER INSTALLATION, ADJUSTMENT, ALTERATION, OR MAINTENANCE CAN CAUSE PROPERTY DAMAGE, INJURY OR DEATH. READ THE INSTALLATION, OPERATION AND MAINTENANCE INSTRUCTIONS THOROUGHLY BEFORE INSTALLING OR SERVICING THIS EQUIPMENT.

KEEP THIS MANUAL IN A SAFE PLACE AND RETAIN FOR FUTURE USE.

OWNER'S MANUAL

MODEL BW4B, BW4B-1, **BW4B-2** SLICER WARMER



TABLE OF CONTENTS

PRE-INSTALLATION.....	1
INSTALLATION	1-4
DAILY OPERATION AND CLEANING GUIDE	5
MONTHLY MAINTENANCE	5
TROUBLESHOOTING CHART.....	6
REPLACEMENT PARTS	7

ILLUSTRATIONS

BW4B DIMENSIONAL DRAWING.....	FIGURE 1
BW4B-1 DIMENSIONAL DRAWING	FIGURE 1A
BW4B, BW4B-1REPLACEMENT PARTS.....	FIGURE 2
BW4B BW4B-1 GLOBE 4913, 4975 ARM POSITION INSTRUCTIONS	FIGURE 3
BW4B BW4B-1 HOBART 2912 ARM POSITION INSTRUCTIONS.....	FIGURE 4

SCHEMATICS

WIRING SCHEMATIC (BW4B BW4B-1 120V)	DWG 147685
WIRING SCHEMATIC (BW4BINTLCE 240V)	DWG 154660

OWNER'S MANUAL

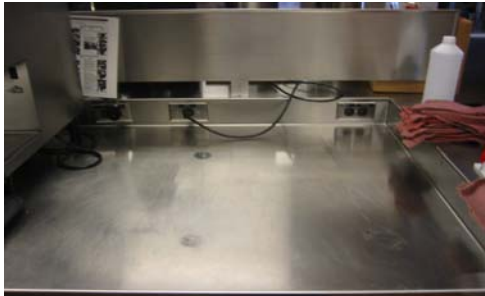
MODEL BW4B, BW4B-1, **BW4B-2** SLICER WARMER



PRE-INSTALLATION

1. The Slicer Warmer is packaged to minimize the risk of shipping damage. Immediately upon receipt, make certain to inspect the unit for damage. **FILE ALL CLAIMS WITH THE FREIGHT CARRIER.**
2. Unpack unit and remove all protective paper or plastic covering metal parts. **FILE ANY CONCEALED DAMAGE CLAIMS WITH THE FREIGHT CARRIER.**
3. **TOOLS REQUIRED:** file, 3/8" nut driver, 3/8" wrench, 5/16" nut driver, 5/16" wrench, 1/4" drill bit, drill, Philips head screwdriver, center punch, fine tip marker, rags.

INSTALLATION



Step 1

WEAR SAFETY GLASSES. Remove slicer, existing heat lamps and any locating brackets from counter. Clean counter. **DO NOT ATTACH UPPER HEATER ARM ASSEMBLY TO THE BASE ASSEMBLY AT THIS TIME.**

Step 2

Remove the correct template from the kit. If you have a Globe Model 4913 or 4975 slicer, remove the template marked Globe. If you have a Hobart Model 2912 slicer, remove the template marked Hobart.

Punch out the hole locations marked on the template for the foot pads and the tower base assembly. There are a total of 14 holes.

Place the template onto the counter top and tape it to the counter.

Using the fine tip marker, mark the hole locations in the template. Remove the template from the counter.

MAKE SURE THERE IS AT LEAST 12" CLEARANCE TO THE LEFT OF THE BASE FOR PIVOTING OF THE UPPER HEATER. WHEN IN PIVOTED POSITION, MAKE SURE SLICER WARMER HEATER DOES NOT DAMAGE ADJACENT EQUIPMENT. If the underside of the counter is inaccessible, additional hardware may be needed such as 1/4" diameter max. Stainless steel bolts.



OWNER'S MANUAL

MODEL BW4B, BW4B-1, **BW4B-2** SLICER WARMER



Step 3

Center punch for (14) holes.



If using provided hardware, stainless steel can be difficult to drill, start with a 1/8" drill bit then a 3/16" and finally a 1/4" drill bit. Deburr top edges. Be sure all shavings are gathered and disposed of properly.

Step 4

Place the foot pads and the tower base assembly onto the counter in the positions that are indicated on the template. Be sure to place the tower base assembly so that the rear mounting arm is going toward the backsplash of the counter.

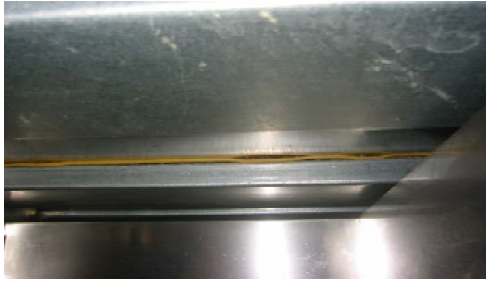


Step 5

Secure the foot pads and the tower base assembly to the counter using the provided hardware. Place the bolt through the hole from the top. On the underside of the counter, slide the flat washer onto the bolt, followed by the lock washer and then the nut. Use the 5/16" nut driver to hold the bolt into position and use the 3/8" nut driver to tighten the nut. Then, seal the tower base to the counter using the grey sealant. Smooth out the sealant and use a rag to wipe away any excess.

OWNER'S MANUAL

MODEL BW4B, BW4B-1, **BW4B-2** SLICER WARMER



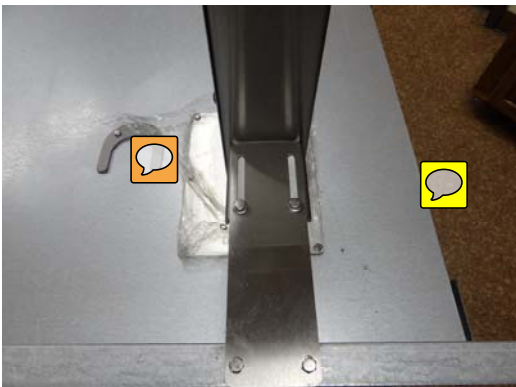
Step 6

Once the foot pads and the tower support base are attached, check the stability of the tower support base. Move the base to the left and the right. If the base moves excessively, the under-counter support bars need to be installed.

To install the support bars, go under the counter and place the support bar underneath the tower base assembly location. The bar can be oriented in any direction (left to right or front to back). Mark the hole positions in the support bars with the fine tip marker. Center punch the hole positions then use the drill and 1/4" drill bit to drill out the hole location previously marked. Once the holes are drilled, use a file to deburr the top side of the holes. Using the hardware provided, secure the support bar into place. Place the 5/16" bolt through the top of the counter. Then, on the underside of the counter, place the flat washer followed by the lock washer and then the 3/8" nut onto the bolt. Use the 5/16" nut driver to hold the 5/16" bolt in place. Use the 3/8" nut driver to tighten down the nut. If more support is needed, add the second bar following the previous procedure.

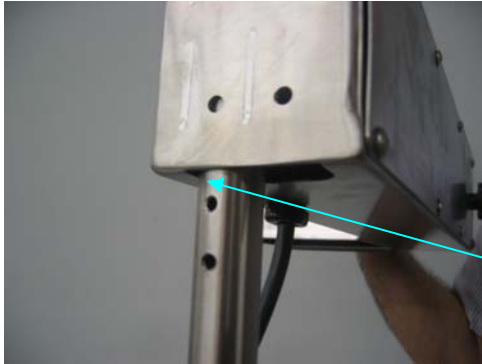
Step 7

With the tower support base in place, adjust the backsplash support bracket to the desired position by sliding the bracket in or out. Then, secure the bracket to the backsplash using self-tapping screws (not provided).



OWNER'S MANUAL

MODEL BW4B, BW4B-1, **BW4B-2** SLICER WARMER



Step 8

Remove screws and lock washers from the top end of the tube. **DO NOT DISCARD.** Insert upper heater arm onto base tube through the front of the opening on the underside of the upper heater arm. The tube must be inserted through the correct side of the bottom slot as shown.

Tube must be inserted into this side of slot.

Orient cover plate to cover the hole in the top of the arm and secure the arm to the tube with the screws and lock washers. Center heater arm and check for interference with slicer unit.



Confirm that heater arm is in correct position for your particular slicer type. See Figure 3 or 4 of this manual for correct Globe/Hobart positioning. Failure to confirm will result in product not being held to proper temperature.

Installation is now complete. Plug the slicer and slicer warmer power cords in. **ROUTE AND SECURE POWER CORDS SO THERE WILL BE NO DAMAGE FROM SLICER WARMER HEAT.** Turn the slicer warmer on, it will take approximately 30 min. to heat up completely. A small amount of smoke may come from the unit, this is normal the first time while the insulation cures.

OWNER'S MANUAL

MODEL BW4B, BW4B-1, **BW4B-2** SLICER WARMER



DAILY OPERATION AND CLEANING GUIDE

1. Turn on the power switch.
2. A red indicator light located next to the switch will illuminate, indicating power is going to the heaters.
3. The unit is ready to use after a 30-minute preheat period.

CLEANING CHECKLIST

1. Turn off the unit and allow it to cool for 30 minutes.
2. Cleaning may be done with a mild detergent and damp cloth.

DO NOT IMMERSE WARMER IN WATER!
DO NOT SATURATE WARMER SURFACES WITH WATER!
DO NOT USE ABRASIVE OR CORROSIVE CHEMICAL CLEANERS!
DO NOT USE SHARP OBJECTS TO SCRAPE CLEAN!

3. Allow sufficient drying time before attempting to use.

MONTHLY MAINTENANCE

Follow the daily cleaning checklist. There are no user-replacement items on this unit. Be sure to inspect unit for loose screws, loose adhesive, damaged parts and repair immediately or contact your local authorized Service Agency.



TROUBLESHOOTING CHART

**** DISASSEMBLING HEATER VOIDS WARRANTY ****
**** BE SURE POWER TO UNIT IS DISCONNECTED BEFORE TROUBLESHOOTING ****

Identify problem in the left column and look for probable cause and solution in right hand column. Probable causes listed in the order they are most likely to happen. This sequence should be used to isolate the problem.

<u>PROBLEM</u>	<u>PROBABLE CAUSE</u>	<u>SOLUTION</u>
1. No Heat/No Indicator Light	Unplugged	Plug in
	Circuit breaker is tripped	Reset breaker; call electrician if tripped twice
	Cord/plug defective	Replace cord/plug
	Broken power switch	Replace switch
	Broken heating unit	Contact Local Service Agency
2. Heat/No Indicator Light	Broken Indicator Light	Replace Indicator Light
3. No Heat/Indicator Light	Broken heating unit	Contact Local Service Agency
4. Product below Holding Temperature	Incorrect upper heater position	Determine slicer type (Globe vs. Hobart) and change position. See Figure 3, 10.

OWNER'S MANUAL

MODEL BW4B, BW4B-1, **BW4B-2** SLICER WARMER



REPLACEMENT PARTS

When ordering parts, make sure to specify the machine model number and serial number as shown by the label attached to the right end of the Upper Arm Assembly.

PART#	DESCRIPTION	QTY PER UNIT	FIGURE
151730	BASE ASBY BW4B	1	2
151102	BASE ASBY BW4B S/N 14480-13697	1	2
147535	BASE ASBY BW4B S/N 13696 & BEFORE	1	2
158517	BASE ASBY (SMALL) BW4B-1	1	2
503148	BOOT, SWITCH	1	2
502080	CONNECTOR, STRAIN RELIEF	1	2
502075	POWER CORD 120v	1	2
154634	POWER CORD 240v	1	Schematic
145573	SWITCH GUARD	1	2
503926	LIGHT, INDICATOR RED 120v	1	2
503342	LIGHT, INDICATOR RED 240v	1	Schematic
151727	PLATE, COVER	1	2
151129	PLATE, COVER S/N 14480-13697	1	2
145683	PLATE, COVER S/N 13696 & BEFORE	1	2
151728	PLATE, COVER SMALL	1	2
151132	PLATE, COVER SMALL S/N 14880-13697	1	2
502587	¼-20X1.250 SCREW	2	2
502122	#10-24 X .375" SCREW	4	2
500789	SWITCH, TOGGLE	1	2
148000	TGLO, LOWER ASBY 120v S/N 11878 & AFTER	1	2
154657	TGLO, LOWER ASBY 240v S/N 11878 & AFTER	1	Schematic
154655	TGLO, UPPER ASBY 240v 10" x 13" S/N 11878 & AFTER	1	Schematic
145282	TGLO, UPPER ASBY 120v 10" x 13" S/N 11878 & AFTER	1	2
157990	TGLO, UPPER ASBY 7" x 10.5" S/N 11877 & BEFORE	1	2

GENERAL SPECIFICATIONS:

HEIGHT: 34.875"

WIDTH AT BASE: 25.500"

WIDTH AT ARM GLOBE POSITION: 25.375"

WIDTH AT ARM HOBART POSITION: 28.375"

DEPTH AT BASE: 21.250"

DEPTH AT ARM: 18.000"

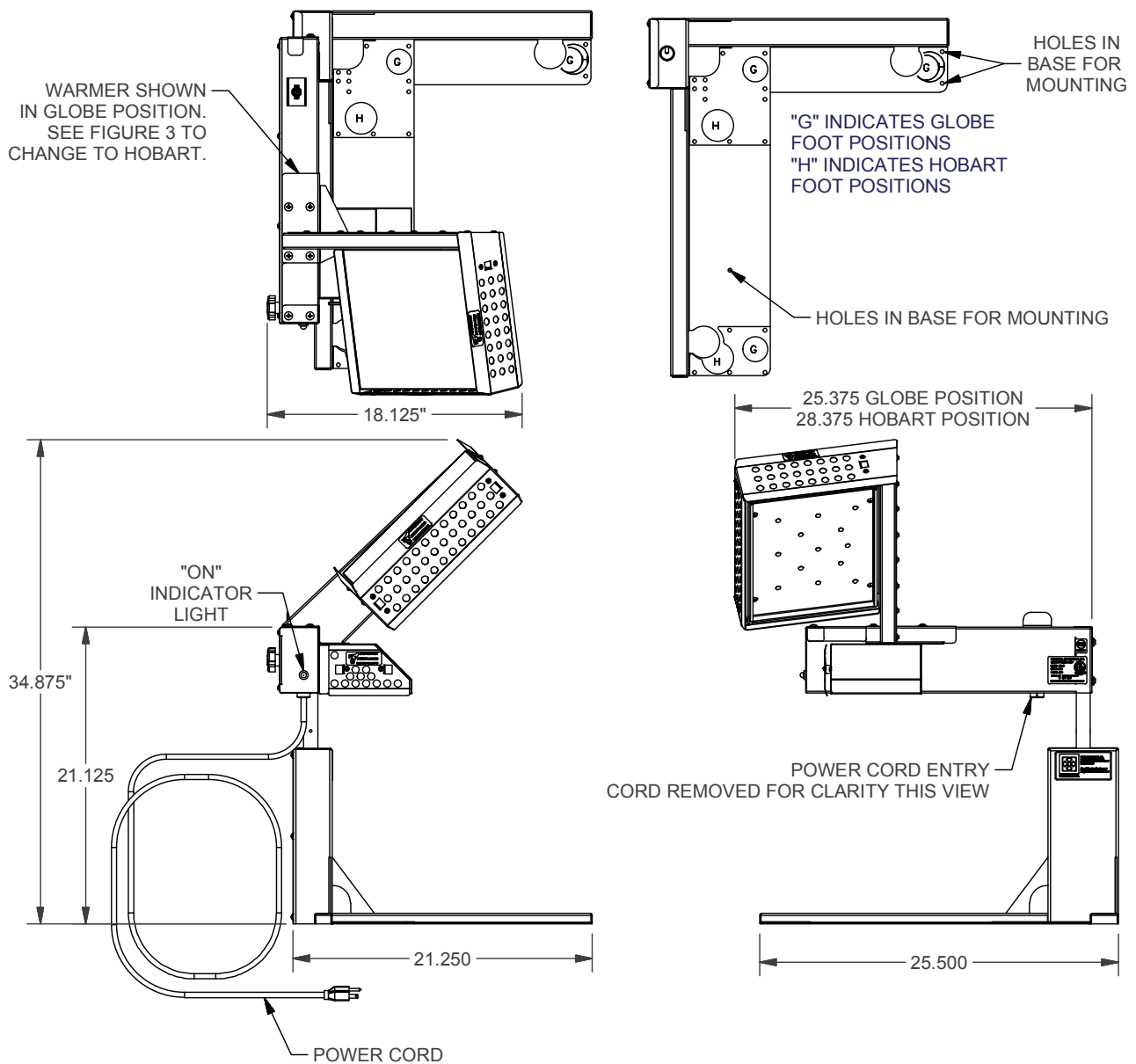
ELECTRICAL: 120V, SINGLE PHASE, 12 AMPS

240V, SINGLE PHASE, 6.1 AMPS

POWER CORD: 8 FT, 3 WIRE INCLUDING GROUND WITH NEMA 5-15 PLUG

8 FT, 3 WIRE INCLUDING GROUND WITHOUT PLUG

BASE VIEW WITH TOP HEATER ARM REMOVE
REFERENCE ONLY



BW4B DIMENSIONAL DRAWING

FIGURE 1

GENERAL SPECIFICATIONS:

HEIGHT: 34.875"

WIDTH AT BASE: 8"

WIDTH AT ARM GLOBE POSITION: 25.375"

WIDTH AT ARM HOBART POSITION: 28.375"

DEPTH AT BASE: 8.000"

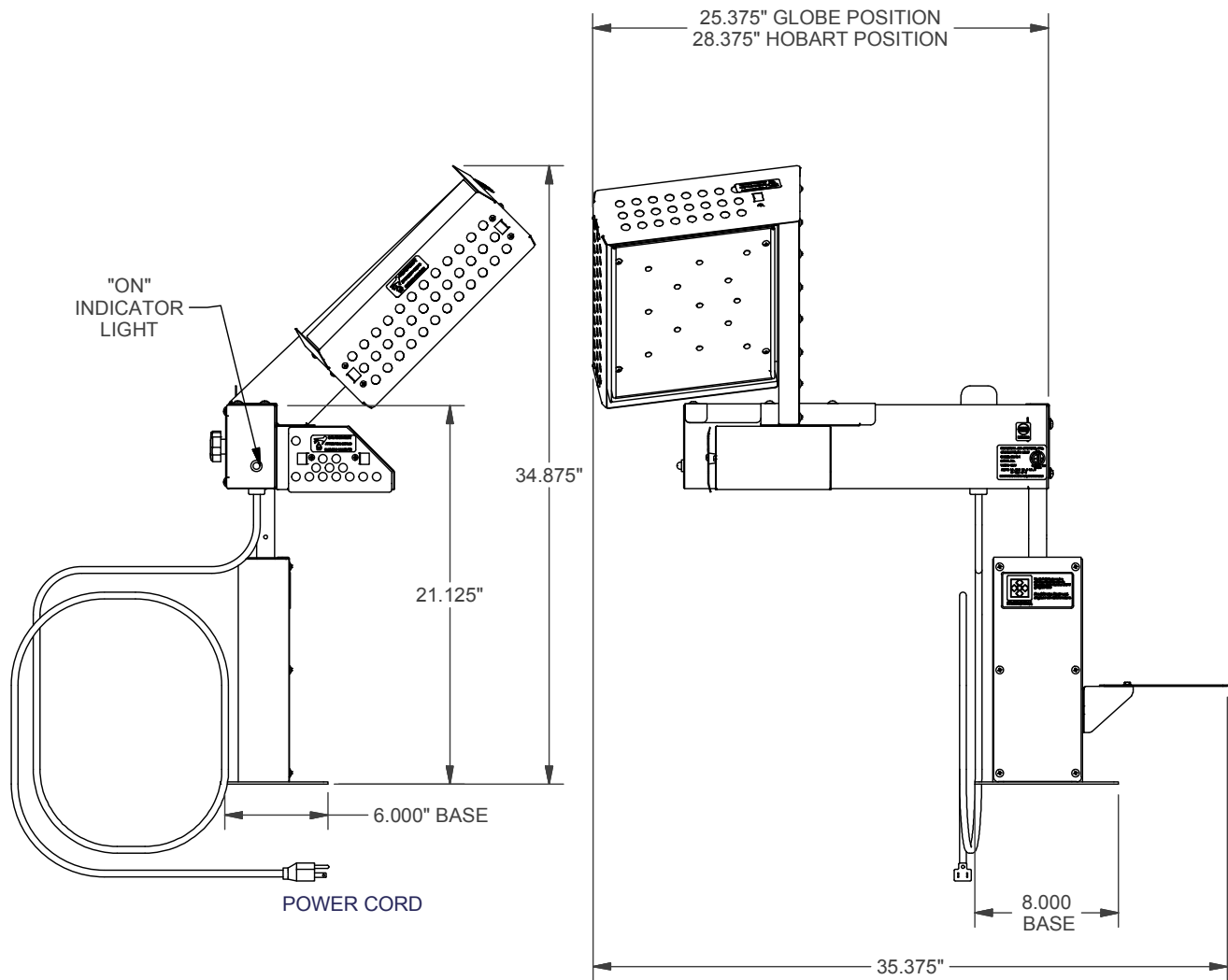
DEPTH AT ARM: 18.125"

ELECTRICAL: 120V, SINGLE PHASE, 12 AMPS

240V, SINGLE PHASE, 6.1 AMPS

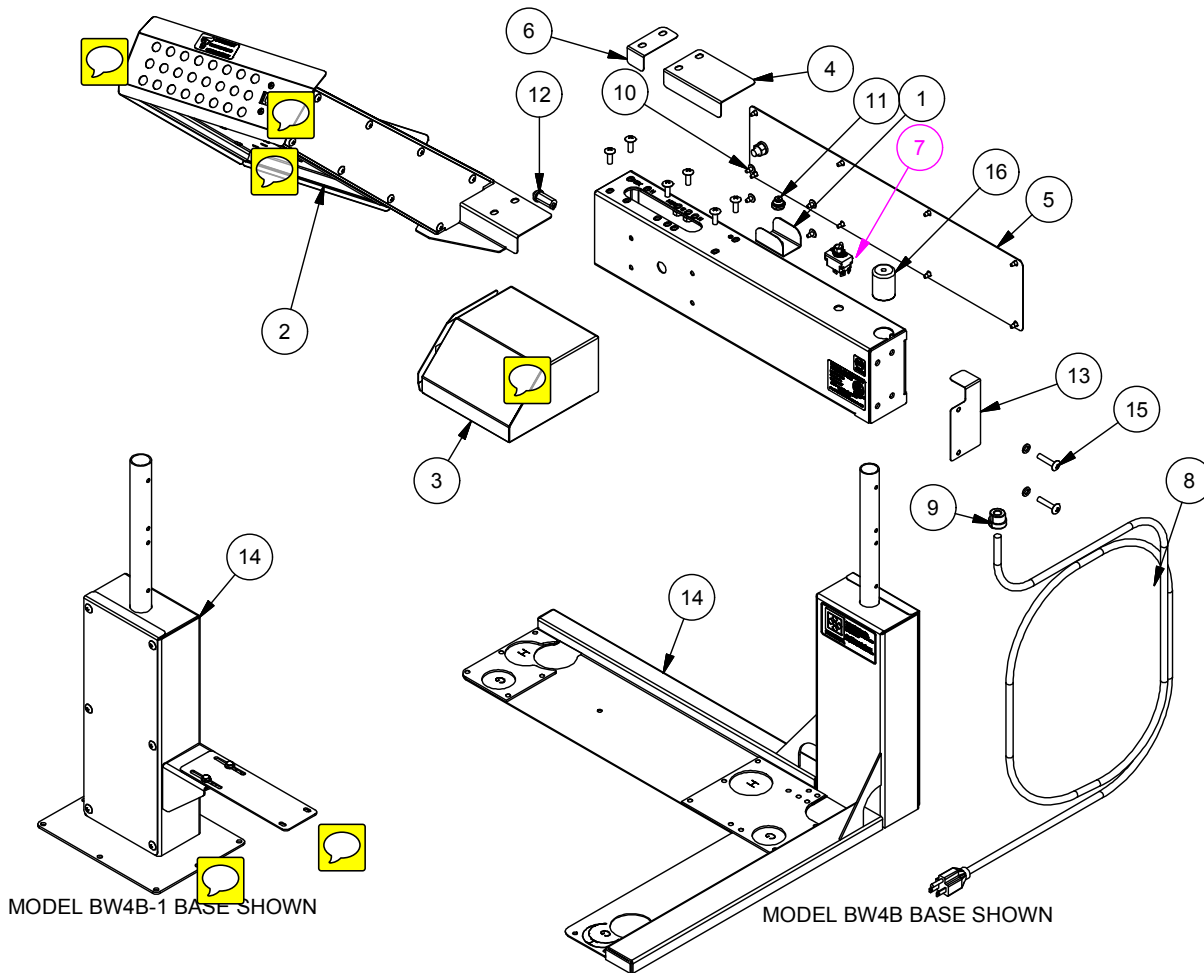
POWER CORD: 8 FT, 3 WIRE INCLUDING GROUND WITH NEMA 5-15 PLUG

8 FT, 3 WIRE INCLUDING GROUND WITHOUT PLUG



BW4B-1 DIMENSIONAL DRAWING

FIGURE 1A

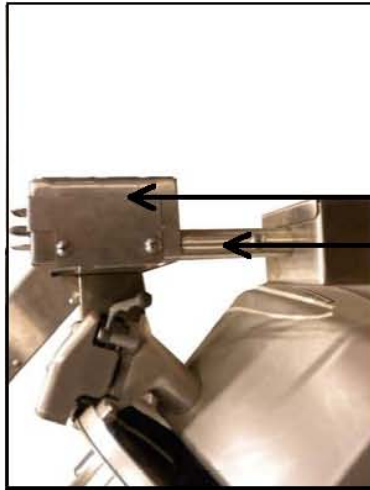


Parts List			
ITEM	PART NO.	DESCRIPTION	QTY
1	145573	SWITCH GUARD	1
2	145282	TGLO, UPPER ASBY 120V S/N 11878 & AFTER	1
	154655	TGLO, UPPER ASBY 240V S/N 11878 & AFTER	1
	157990	TGLO, UPPER ASBY 120V S/N 11877 & BEFORE	1
3	148000	TGLO, LOWER ASBY 120V S/N 11878 & AFTER	1
	154657	TGLO, LOWER ASBY 240V S/N 11878 & AFTER	1
4	151727	PLATE, COVER	1
	151129	PLATE, COVER S/N 13697-14480	1
	145683	PLATE, COVER S/N13696 & BEFORE	1
5	151128	COVER, PIVOT ARM	1
6	151728	PLATE, COVER SMALL	1
	151130	PLATE, COVER SMALL S/N 13697-14480	1
7	500885	SWITCH, TOGGLE	1
8	502075	POWER CORD 120V	1
	154634	POWER CORD 240V	1
9	502080	CONNECTOR, STRAIN RELIEF	1
10	502122	10-24 X 3/8" SCREW	4
11	503148	BOOT, TOGGLE SWITCH	1
12	503926	LIGHT, INDICATOR RED 120V	1
	503342	LIGHT, INDICATOR RED 240V	1
13	151729	PLATE, HOLE COVER	1
14	151730	BASE ASBY BW4B	1
	151102	BASE ASBY BW4B S/N 13697-14480	1
	147535	BASE ASBY BW4B S/N13696 & BEFORE	1
	158517	BASE ASBY (SMALL) BW4B-1	1
15	502587	1/4-20 X 1.250 SCREW	2
16	504157	CAP, 1" TUBING	1

BW4B REPLACEMENT PARTS

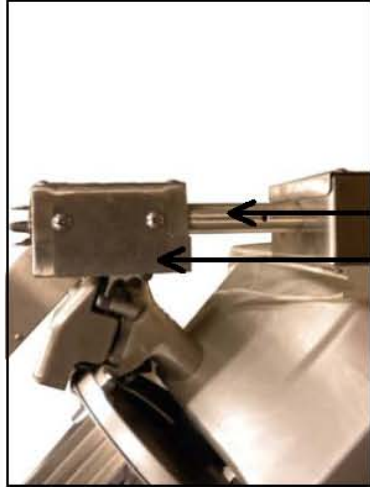
FIGURE 2

**MARSHALL AIR MODEL BW4B SLICER WARMER
CORRECT CONFIGURATION OF WARMER ARM FOR GLOBE SLICER MODELS: 4913 AND 4975**



**COVER
ON LEFT**

**GLOBE 4913, 4975 SLICER
CORRECT POSITION**



**COVER
ON RIGHT
(ASSEMBLY ON WRONG
SIDE OF POST)**

**GLOBE 4913, 4975 SLICER
INCORRECT POSITION**



**COVER POST
ON RIGHT
(ASSEMBLY TOO LOW ON POST)**

**GLOBE 4913, 4975 SLICER
INCORRECT POSITION**



**ARM
LARGE
COVER**

**GLOBE 4913, 4975 SLICER
CORRECT POSITION**



**LARGE
COVER
ARM
SMALL
COVER**

**GLOBE 4913, 4975 SLICER
INCORRECT POSITION**



**LARGE
COVER
ARM**

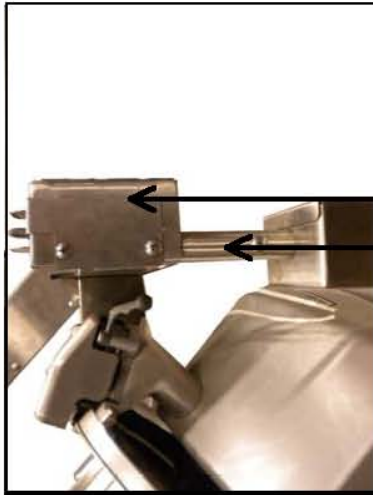
**GLOBE 4913, 4975 SLICER
INCORRECT POSITION**



GLOBE 4913, 4975 ARM POSITION INSTRUCTIONS

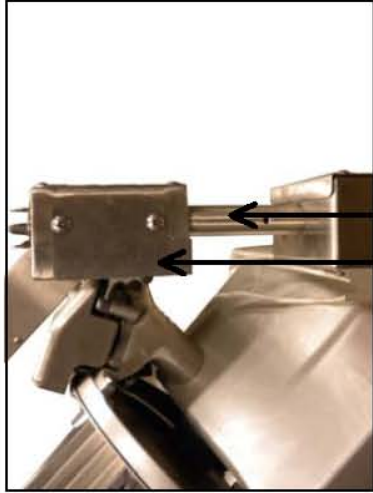
FIGURE 3

**MARSHALL AIR MODEL BW4B SLICER WARMER
CORRECT CONFIGURATION OF WARMER ARM FOR HOBART SLICER MODEL: 2912**



**POST COVER
ON LEFT**

**HOBART 2912 SLICER
CORRECT POSITION**



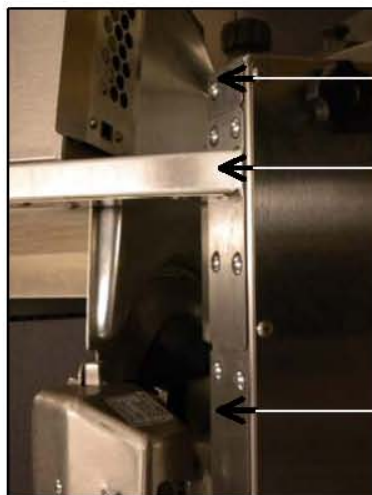
**COVER
ON RIGHT
(ASSEMBLY ON WRONG
SIDE OF POST)**

**HOBART 2912 SLICER
INCORRECT POSITION**



**COVER POST
ON RIGHT
(ASSEMBLY TOO LOW ON POST)**

**HOBART 2912 SLICER
INCORRECT POSITION**



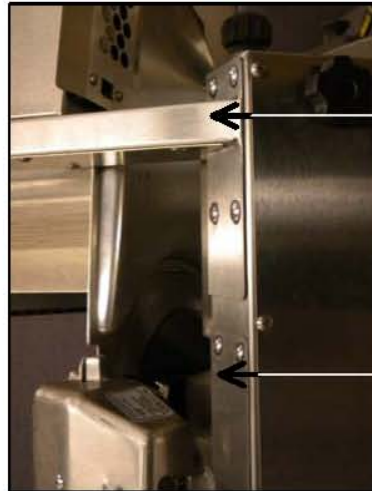
**LARGE COVER
ARM
SMALL COVER**

**HOBART 2912 SLICER
CORRECT POSITION**



**LARGE COVER
ARM**

**HOBART 2912 SLICER
INCORRECT POSITION**



**LARGE COVER
ARM**

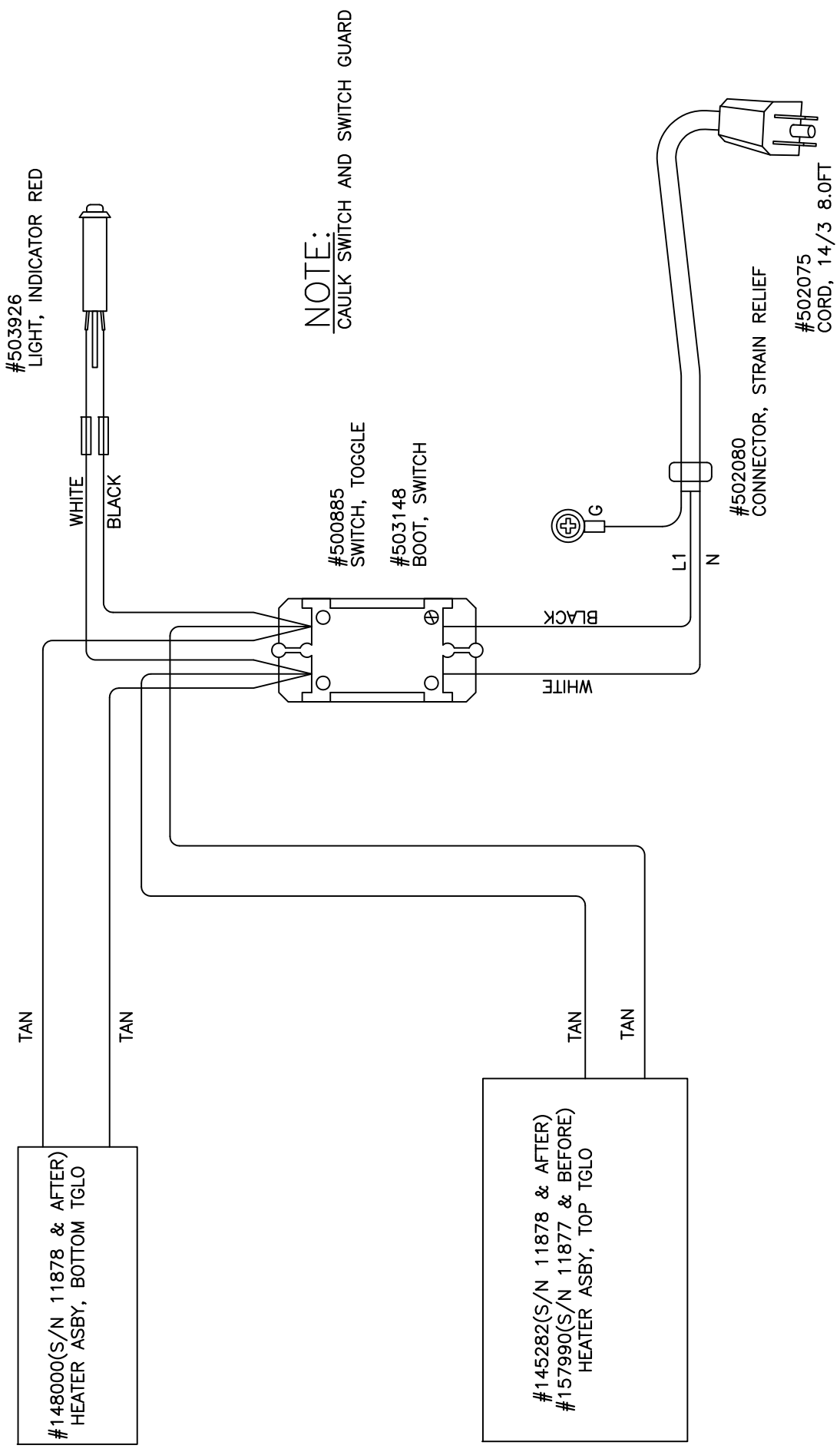
**HOBART 2912 SLICER
INCORRECT POSITION**



HOBART 2912 ARM POSITION INSTRUCTIONS

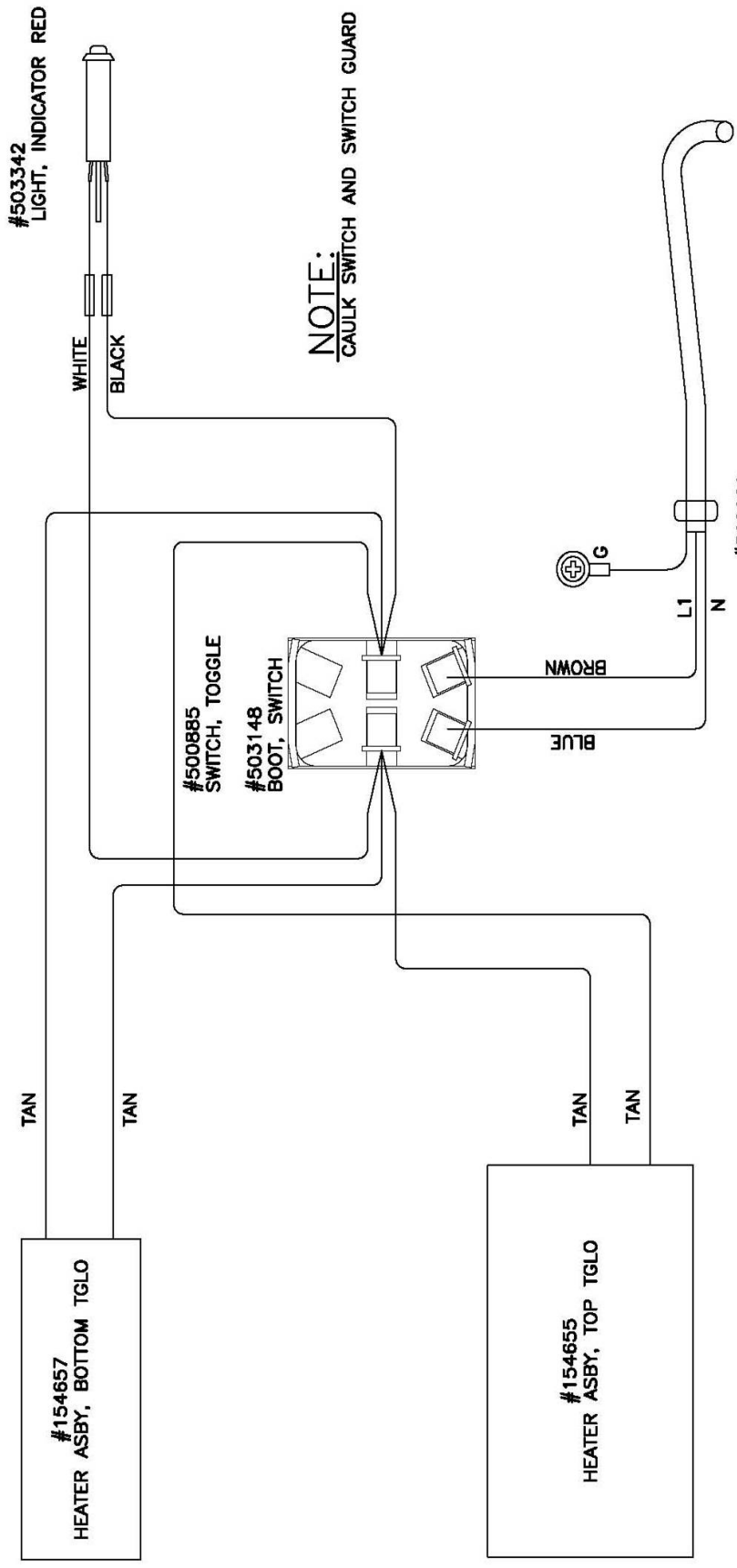
FIGURE 4

THIS SCHEMATIC IS FOR USE BY A QUALIFIED TECHNICIAN OR ELECTRICIAN ONLY.



REV	DESCRIPTION	DATE	REV. BY	DRAWN BY:	DATE:	REV DATE:
1	AMP RATING WAS 9A	02-FEB-2006	J.L.	J.L.	13-OCT-2005	
2	REMOVED WATTS	21-JUN-2006	PW	GENERIC NAME:		
3	WAS 10 A	25-JUL-2008	J.L.	SCHEMATIC		
4	SWITCH WAS 500789	03-DEC-2009	J.L.	PRODUCT LINE:		
5	148000 WAS 145981, 145282 WAS 145253	07-MAY-2010	J.L.	HHC		
6	ADDED S/N TO HEATERS	11/27/2012	PW	PRODUCT CLASS:		
				REFERENCE		
				SIZE: A	ROUTE: ELECT	DWG. NO.: 147685
				SCALE: 1:2	IMAGE MAY BE REDUCED	REV: 6
					NTS	CODE: BW4B
				MARSHALL AIR SYSTEMS, INC.		
				SCHEMATIC, BW4B 120V 12.1A		

154660



NOTE:
CAULK SWITCH AND SWITCH GUARD

#504145
CORD SET
#154634
CUT OFF PLUG

#502080
CONNECTOR, STRAIN RELIEF

REV	DESCRIPTION	DATE	REV. BY	DRAWN BY:	DATE:	MARSHALL AIR SYSTEMS, INC.		
1	#504145 WAS CORD #503350	11-DEC-2009	WW	J.L.	02-DEC-2009	SCHEMATIC, BW4BINTLCE 240V 6.1A		
2	154657 WAS 154656, 154655 WAS 154654	07-MY-2010	J.L.	FAB		SIZE: A	ROUTE: MANUF	DWG. NO.: 154660
MATERIAL: REFERENCE						IMAGE MAY BE REDUCED	CODE: BW4BINTLCE	REV: 2
						SCALE: NTS	NTS	