



MARKET FORGE

**ST10-2G
GAS TWO COMPARTMENT CONVECTION STEAMER
WITH TWIN GENERATORS
PARTS AND SERVICE MANUAL**

EFFECTIVE AUGUST 12, 2014

Superseding All Previous Parts Lists.

The Company reserves the right to make substitution in the event that items specified are not available.

ERRORS: Descriptive and/or typographic errors are subject to correction.

MARKET FORGE

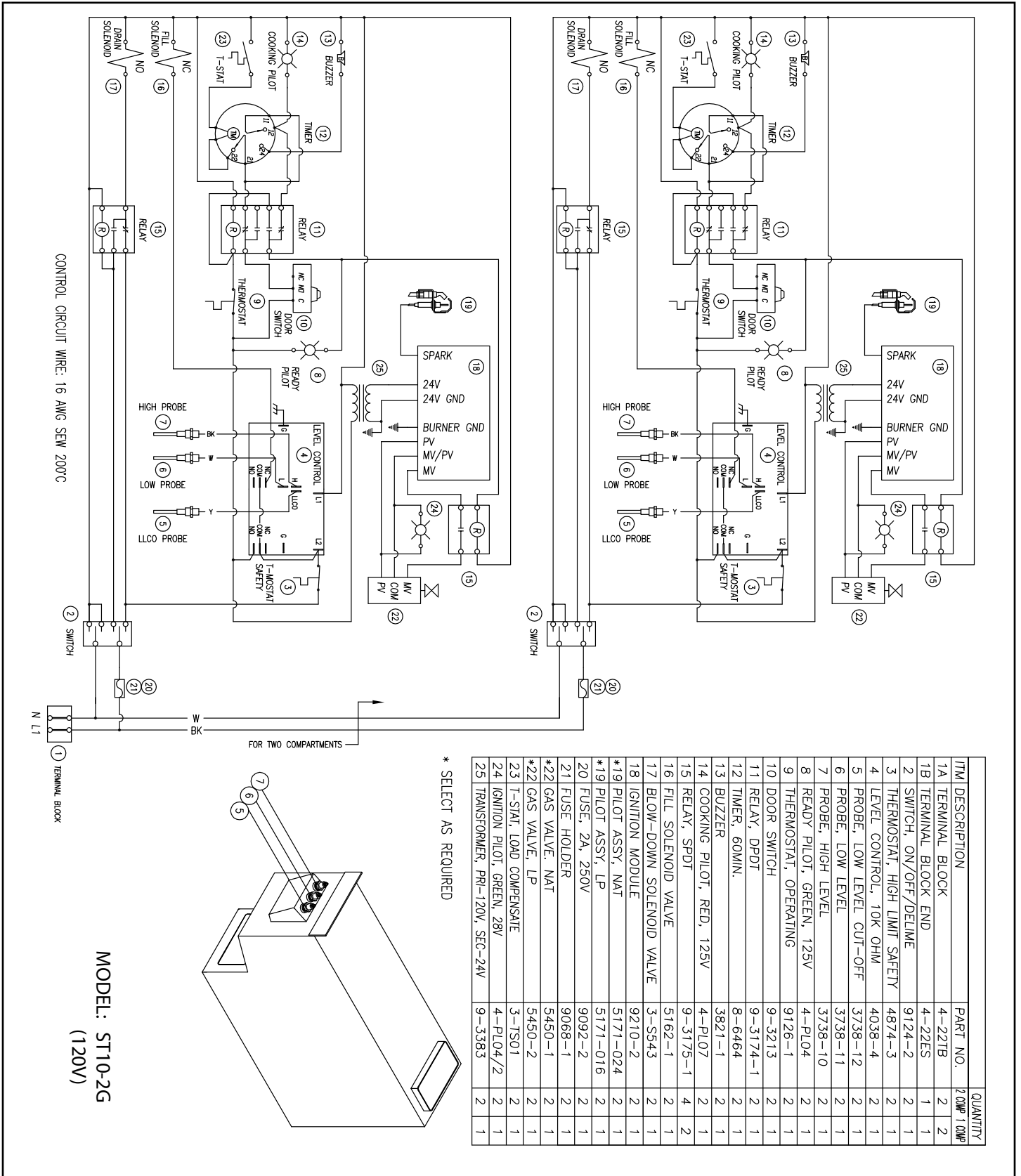
Telephone: (802) 658-6600 Fax: (802) 860-3732
www.marketforge.com

P/N 14-0289 Rev A (8/14)

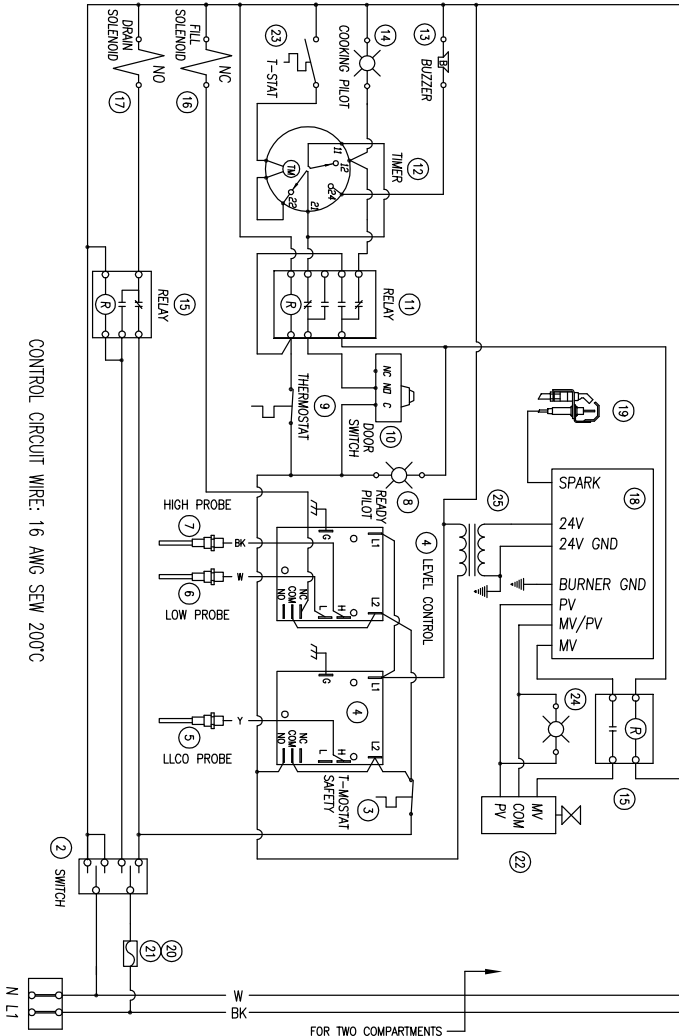
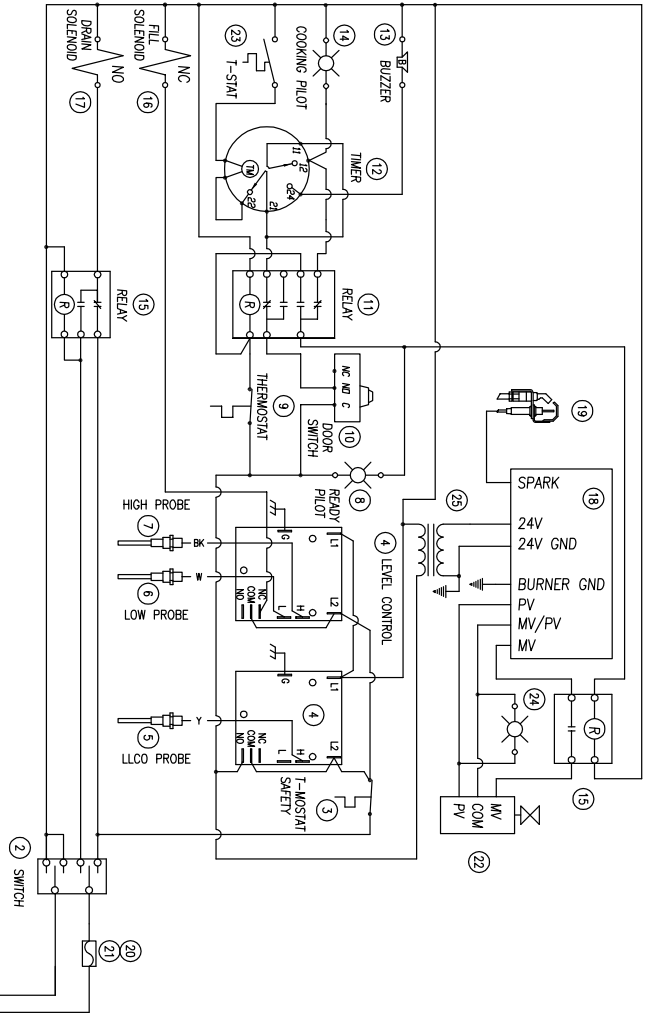
TABLE OF CONTENTS

WIRING DIAGRAMS	3
TROUBLESHOOTING	7
ADJUSTMENTS	11
ILLUSTRATED PART LIST	
COMPLETE EXPLODED VIEW	12
DOOR ASSEMBLY	15
BURNER PARTS.....	16
GAS ASSEMBLY.....	17
CONTROL BOARD.....	18

WIRING DIAGRAMS

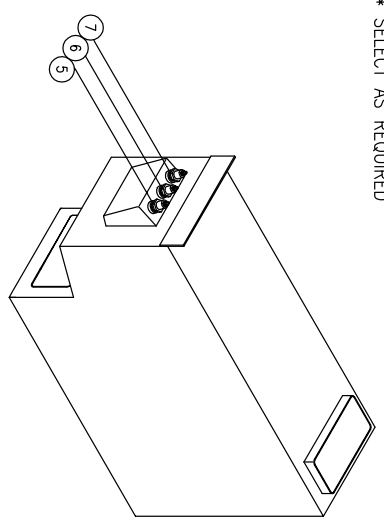


WIRING DIAGRAMS



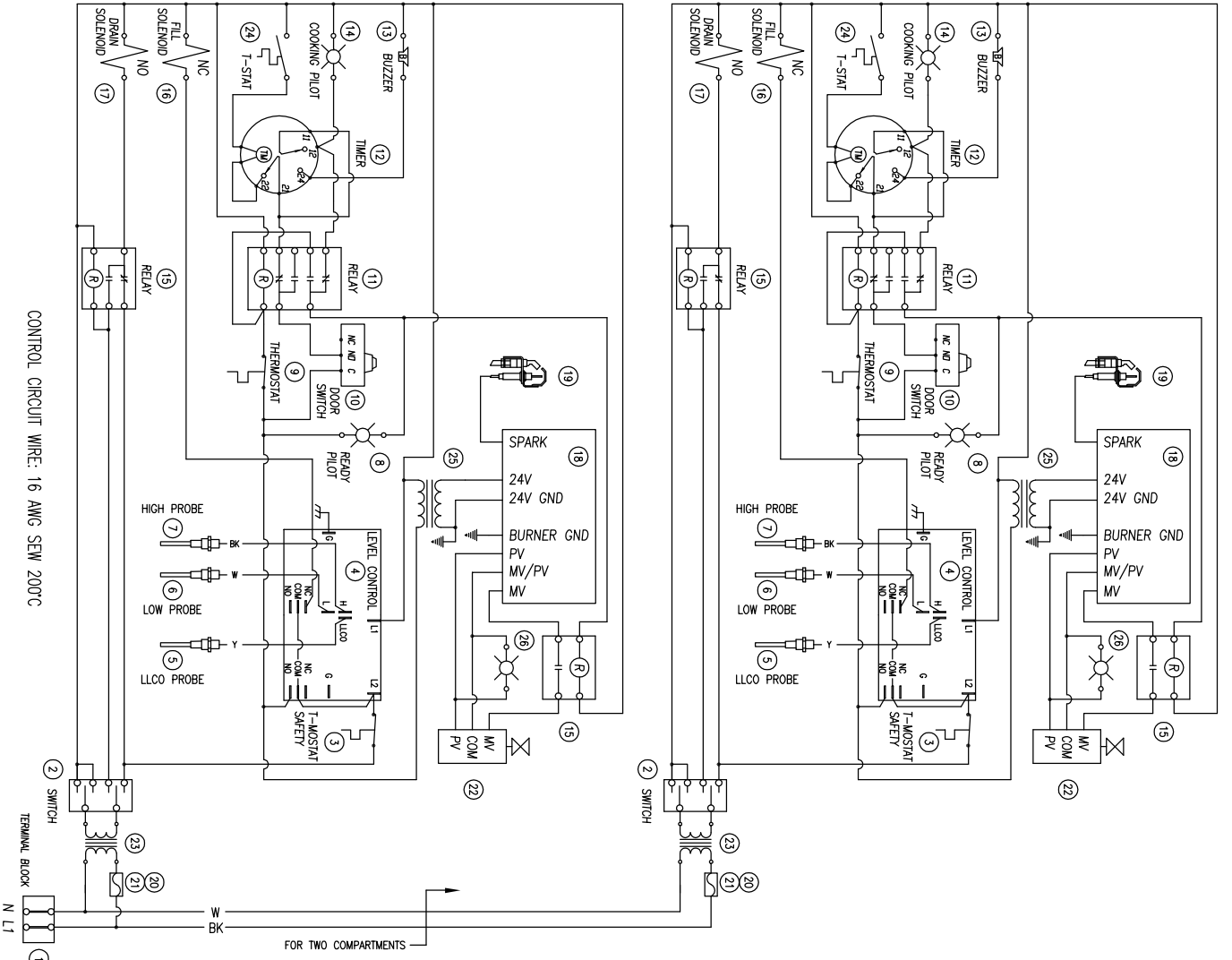
ITEM DESCRIPTION	PART NO.	QUANTITY
1A TERMINAL BLOCK	4-22TB	2
1B TERMINAL BLOCK END	4-22ES	1
2 SWITCH, ON/OFF/DELIME	9124-2	2
3 THERMOSTAT, HIGH LIMIT SAFETY	4874-3	2
4 LEVEL CONTROL, 1M OHM	5250-1	4
5 PROBE, LOW LEVEL CUT-OFF	3738-12	2
6 PROBE, LOW LEVEL	3738-11	2
7 PROBE, HIGH LEVEL	3738-10	2
8 READY PILOT, GREEN, 125V	4-PI04	2
9 THERMOSTAT, OPERATING	9126-1	2
10 DOOR SWITCH	9-3213	2
11 RELAY, DPDT	9-3174-1	2
12 TIMER, 60MIN.	8-6464	2
13 BUZZER	3821-1	2
14 COOKING PILOT, RED, 125V	4-PI07	2
15 RELAY, SPDT	9-3175-1	4
16 FILL SOLENOID VALVE	5162-1	2
17 BLOW-DOWN SOLENOID VALVE	3-SS43	2
18 IGNITION MODULE	9210-2	2
*19 PILOT ASSY, NAT	5171-024	2
*19 PILOT ASSY, LP	5171-016	2
20 FUSE, 2A, 250V	9092-2	2
21 FUSE HOLDER	9068-1	2
*22 GAS VALVE, NAT	5450-1	2
*22 GAS VALVE, LP	5450-2	2
23 T-STAT, LOAD COMPENSATE	3-TS01	2
24 IGNITION PILOT, GREEN, 28V	4-PI04/2	2
25 TRANSFORMER, PRI-120V, SEC-24V	9-3383	2

* SELECT AS REQUIRED



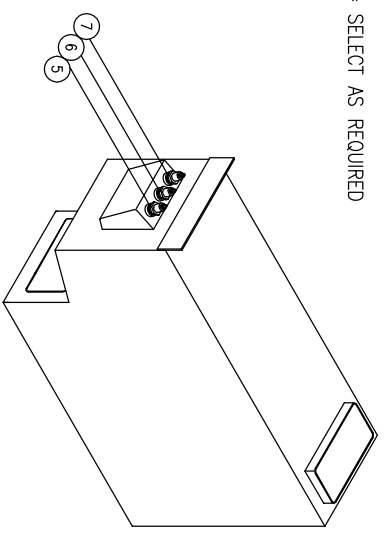
MODEL: ST10-2G
(120V, R.O.)

WIRING DIAGRAMS



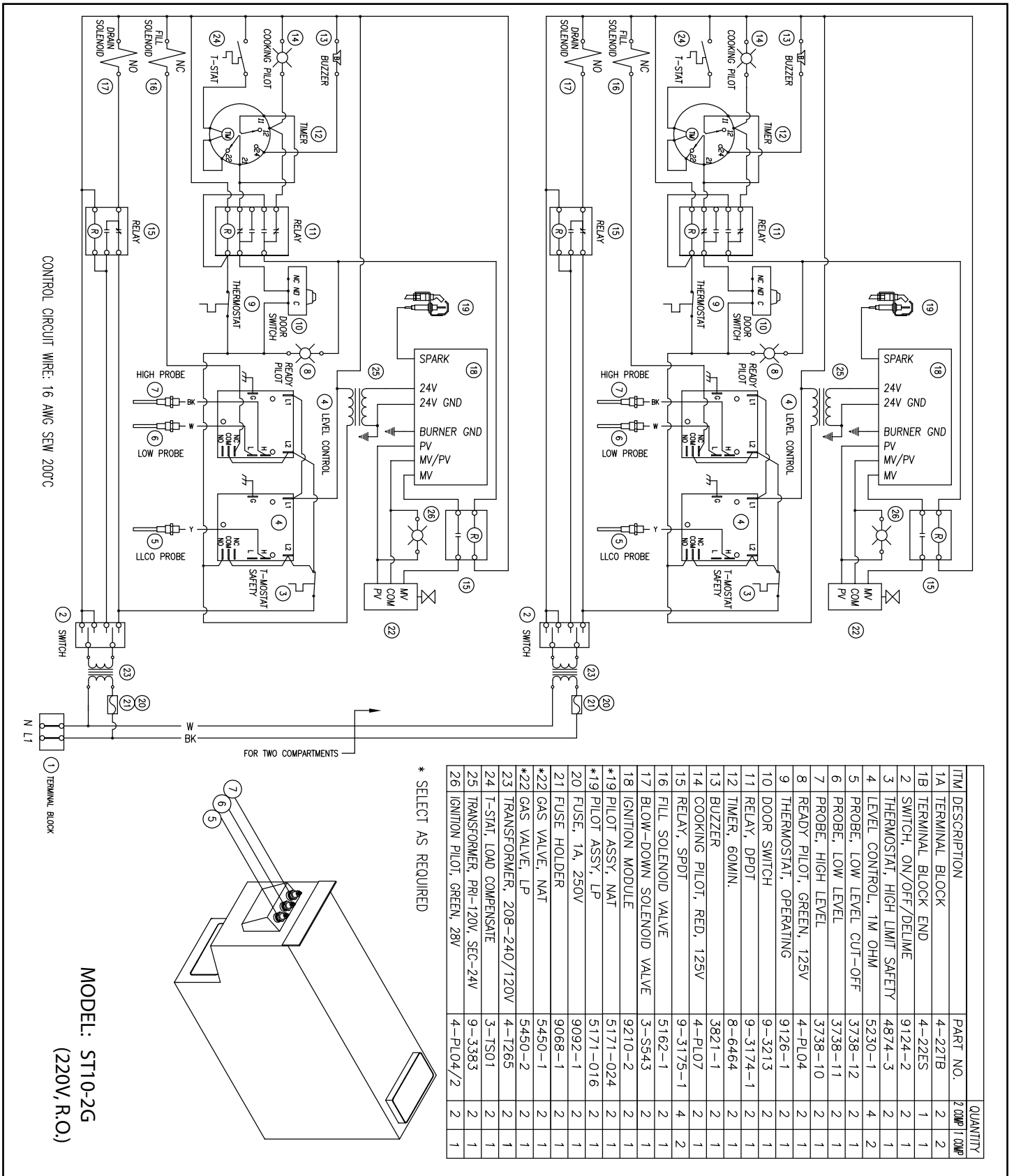
ITEM DESCRIPTION	PART NO.	QUANTITY
1A TERMINAL BLOCK	4-22TB	2 COMP 1 COMP
1B TERMINAL BLOCK END	4-22ES	2
2 SWITCH, ON/OFF/DELIME	9124-2	2 1
3 THERMOSTAT, HIGH LIMIT SAFETY	4874-3	2 1
4 LEVEL CONTROL, 10K OHM	4038-4	2 1
5 PROBE, LOW LEVEL CUT-OFF	3738-12	2 1
6 PROBE, LOW LEVEL	3738-11	2 1
7 PROBE, HIGH LEVEL	3738-10	2 1
8 READY PILOT, GREEN, 125V	4-PI04	2 1
9 THERMOSTAT, OPERATING	9126-1	2 1
10 DOOR SWITCH	9-3213	2 1
11 RELAY, DPDT	9-3174-1	2 1
12 TIMER, 60MIN.	8-6464	2 1
13 BUZZER	3821-1	2 1
14 COOKING PILOT, RED, 125V	4-PI07	2 1
15 RELAY, SPDT	9-3175-1	4 2
16 FILL SOLENOID VALVE	5162-1	2 1
17 BLOW-DOWN SOLENOID VALVE	3-SS43	2 1
18 IGNITION MODULE	9210-2	2 1
*19 PILOT ASSY, NAT	5171-024	2 1
*19 PILOT ASSY, LP	5171-016	2 1
20 FUSE, 1A, 250V	9092-1	2 1
21 FUSE HOLDER	9068-1	2 1
*22 GAS VALVE, NAT	5450-1	2 1
*22 GAS VALVE, LP	5450-2	2 1
23 TRANSFORMER, 208-240/120V	4-T765	2 1
24 T-STAT, LOAD COMPENSATE	3-TS01	2 1
25 TRANSFORMER, PRI-120V, SEC-24V	9-3383	2 1
26 IGNITION PILOT, GREEN, 28V	4-PI04/2	2 1

* SELECT AS REQUIRED



MODEL: ST10-2G
(220V)

WIRING DIAGRAMS



TROUBLESHOOTING

GENERAL

The information in this section is intended to assist both the operator and service personnel in locating the general source of problems that may occur with the cooker. Before following any of the procedures given in this section, the operator should be thoroughly familiar with the operating instructions and the function of all controls that are described. If the problem cannot be readily corrected, the operator should contact the nearest service agency for assistance.

The electrical troubleshooting procedures that follow require access to components and terminals of the electrical control panel. Electrical controls are reached by removing screws that fasten the control panel to the frame. The panel may be pulled forward for testing while interconnected to the cooker circuits or disconnected at the pin connection for complete removal and repair.

INCOMING POWER

Before troubleshooting any of the electrical parts or assemblies, verify that power is being supplied to the cooker. Incoming power is connected to the terminal block in the upper controls section, accessible by the right side panel. With power connected to the cooker, an AC voltmeter is used to measure 120 volts across L1 and L2. If

120 volts is present, and the cooker will not operate, the fault lies within the electrical circuits of the cooker.



WARNING

Before removing control panel or checking connections and wiring, be sure that the circuit breaker for incoming power is OFF. When power is supplied, all exposed terminals of the control panel carry 120 Volts.

ELECTRICAL FAULT ISOLATION

Correction of an electrical failure first requires isolation of the fault to a single circuit or component. In most cases, the nature of the failure and its effect upon the operation of the cooker will be sufficient to narrow it down to one or more circuit elements. See "Electrical Fault Isolation Guide" for isolating electrical faults.

ELECTRICAL TROUBLESHOOTING PROCEDURES

Before performing the troubleshooting procedures in this section, the serviceman must be familiar with the function of all controls as described as well as with the Principles of Operation.

ELECTRICAL FAULT ISOLATION GUIDE

FAILURE	FAULT LOCATION
1. Will not operate in either CONSTANT STEAM or 60-MINUTE TIMER position.	a. Incoming power
	b. Timer
	c. Door interlock switch
	d. Wiring
2. Operating in CONSTANT STEAM position but not in 60-MINUTE TIMER position.	a. 60-minute timer
	b. Wiring
3. Operating in 60-MINUTE TIMER position but not in CONSTANT STEAM position.	a. Timer
	b. Wiring
4. Will indicator light on and steam solenoid valve open time dial fails to turn.	a. Compartment thermostatic switch
	b. Constant steam position
	c. Timer motor
	d. Wiring
5. Buzzer fails to sound at end of 60-MINUTE TIMER mode.	a. 60-minute timer contacts
	b. Buzzer
	c. Wiring
6. Steam flows continuously from boiler drain line.	a. Thermostatic cooling valve needs adjusting
	b. Thermostatic cooling valve needs replacing
	c. Wiring

TROUBLESHOOTING

ELECTRICAL INSPECTION

The first step in any electrical troubleshooting procedure is a thorough physical inspection of all wiring connections. To access electrical components, remove the right-side access panel on the upper cabinet.

Check all wiring connections by hand to assure that both ends of all connection points are tightly secured. Use a screwdriver to tighten connection points. If necessary, visually inspect all quick-disconnect terminals for evidence of corrosion. Terminals in this condition should be separated, cleaned with emery cloth until shiny, and tightly reconnected.

60 MINUTE TIMER

Timer Contacts

Defective timer contacts will result in failure of either cooker compartment to operate. When this occurs, remove the control pan and proceed as follows:

1. Turn off power to the cooker at external circuit breaker.
2. Disconnect all five wires from timer terminals.
3. Connect an ohmmeter between terminals 1 and 3.
4. Rotate timer dial beyond the "0-Minute" point (any setting) to obtain a reading of zero ohms on the ohmmeter. If zero ohm reading cannot be obtained, timer contacts are defective and the timer must be replaced.
5. Move ohmmeter leads to terminals 1 and 4.
6. Rotate timer dial to "0-Minute" position (an audible click indicates correct position). If zero ohm reading cannot be obtained, the timer is defective and must be replaced.
7. Remove ohmmeter and replace all five leads on timer terminals.

Timer Motor

A defective timer motor will cause continuous operation in the TIME mode, with the timer dial failing to return to the "0-Minute" position. Since thermostatic switch failure can cause the same symptom, fault must first be isolated to the timer by testing the thermostat.

To confirm timer motor condition, proceed as follows:

1. Carefully check motor wire leads and tighten loose connections.



WARNING

**Use care while working with control panel.
Terminals carry 120 Volts.**

2. Turn on power to the steamer.
3. Set timer dial (any setting beyond "0-Minute"). If operation is correct, the motor will turn the dial toward "0-Minute". If the motor fails to operate, it is defective and the entire timer must be replaced.
4. Shut off power to the cooker.

DOOR INTERLOCK SWITCH

Malfunction of the cooker door interlock switch prevents timer indicator lights from turning on and steam solenoid from opening when the timer dial is set. If steam does not enter the compartment and the cooking indicator light fails to turn on with the door latch securely engaged, the fault may be in the door interlock switch. Proceed as follows:

1. Turn off power to the cooker.
2. Disconnect wires to the door switch terminals.
3. Connect an ohmmeter between the terminals of the switch.
4. Actuate the switch by closing the cooking compartment door. If a zero reading cannot be obtained, the switch is defective and must be replaced.
5. Remove the ohmmeter and replace the leads on switch terminals.

INDICATOR LIGHTS

If the cooker compartment functions correctly, with the single exception that the indicator light fails to light during operation, the fault is a defective indicator light. A "burned out" or defective light is verified by using an AC volt-meter at the leads, with input power on the selector switch in the correct position for that timer, the timer set, and the door latches closed. If 120 volts is present, the fault is in the indicator light and requires replacement. If 120 volts is not present, the fault is in the wiring or control components (selector switch, timer or door switch).

TROUBLESHOOTING

COOKING COMPARTMENT THERMOSTATIC SWITCH

A thermostatic switch included in the circuit for the timer motor delays timer operation until steam flowing into the compartment satisfies the temperature-actuated switch device. If a timer motor fails to operate within about one minute after the indicator light comes on (with cooker compartment empty), the cause may be a defective thermostatic switch. To test the switch, proceed as follows:

1. Disconnect the two wires connected to the thermostatic switch terminals.
2. Connect an ohmmeter between the two terminals.
3. Place the cooker into operation and observe ohmmeter dial. Within one minute of operation, the switch contacts close automatically to register a zero ohm reading on the dial. If zero ohm reading is not obtained, the switch is defective.
4. Shut off cooker, disconnect ohmmeter leads, and replace wires on switch terminals.

BUZZER

If the buzzer does not sound at the termination of the operator-selected timer setting (timer dial returned to "0-Minute" position), the fault may be a defective buzzer. Buzzer operation is verified using an AC volt-meter at buzzer coil connections with input power on and selector switch and coinciding timer dial set at the "0-Minute" position. If voltage is 120 volts, the fault is in the buzzer, which must be replaced. If 120 volts is not present, the fault is in the wiring or control components (timer or selector switch).

WIRING

Using an ohmmeter, wiring continuity between the connections shown on the wiring diagram is readily verified. This is best done in stages, removing only those wires required for each continuity check. As each lead is replaced, it should be checked for evidence of corrosion, and cleaned if necessary. All leads must be tightly attached so as to provide a good electrical connection.

TROUBLESHOOTING GUIDE

PROBLEM	PROBABLE CAUSE(S)	REMEDY
1. Cooking Indicator light fails to light with timer set.	a. Constant steam position.	a. Locate external circuit breaker for incoming power and place in ON position.
	b. Door interlock switch contacts not closed.	b. Shut cooker door to close switch contacts. Check alignment of door with switch.
	c. Door interlock switch faulty.	c. Replace switch.
	d. Indicator light burned out.	d. Replace light.
	e. Faulty timer contacts.	e. Replace timer.
	f. Faulty wiring.	f. Inspect condition of wire and tightness of all connections. Correct as needed.
2. Steam fails to enter cooking compartment with cooking indicator light on.	a. Faulty wiring.	a. Inspect condition of wire and tightness of all connections. Correct as needed.
3. Steam enters compartment continuously. Timer dial not turning.	a. Constant steam position.	a. Move knob to timing location.
	b. Faulty thermostat switch.	b. Replace switch.
	c. Faulty timer motor.	c. Replace timer.
	d. Faulty wiring.	d. Inspect condition of wire and tightness of all connections. Correct as needed.

TROUBLESHOOTING

PROBLEM	PROBABLY CAUSE(S)	REMEDY
4. Steam continues to flow into compartments and/or buzzer fails to sound at end of timer setting.	a. Timer contacts faulty.	a. Replace timer.
	b. Buzzer faulty.	b. Replace buzzer.
	c. Faulty wiring.	c. Inspect condition of wire and tightness of all connections. Correct as needed.
5. Steam flows continuously from boiler drain line with cooking in operation.	a. Cold water not connected.	a. Turn on external shut off valve.
	b. Thermostat cooling valve (TCV) needs adjusting.	b. See "Performance Check"
	c. Faulty thermostatic cooling valve.	c. Replace thermostatic cooling valve.
	d. Faulty wiring.	d. Inspect condition of wire and tightness of all connections. Correct as needed.
6. Door Leaks*	a. Damaged door gasket.	a. Check gasket for cuts and replace.
	b. Door latch.	b. Adjust tension.
	c. Door hand.	c. Adjust tension.
7. Water Flows into cooking compartment*	a. Level probe short circuited.	a. Check and correct.
	b. Scale build-up on probe.	b. Clean all probes.
	c. Water fill solenoid valve.	c. Plugged, defective, clean or replace.
8. Water accumulates in compartment.	a. Plugged compartment drain.	a. Remove screen and clean drain line.
9. Water flows into drain during shut down.	a. Thermostatic cooling valve does not close.	a. Check valve for foreign material, or damage.
10. Water not being supplied to generator.	a. Water supply off.	Check in coming water valve is on.
	b. Supply water pressure too low.	Check supply agency.
	c. Defective water solenoid valve.	Replace or clean.
	d. Level probe shorted.	Check and correct.
	e. Defective water level control.	Replace.
	f. Drain valve is open.	Check valve, clean or replace.

***NOTE: THESE PROBLEMS ARE AN INDICATION OF SEVERE WATER CONDITIONS WHICH SHOULD BE CORRECTED IMMEDIATELY TO AVOID DAMAGE TO THE COMPONENTS AND PERFORMANCE OF THE STEAMER. CALL YOUR SERVICE AGENCY FOR ASSISTANCE. Got to www.mfii.com to find a service agency near you.**

ADJUSTMENTS

All units are adjusted at the factory. In case of operation problems at initial installation, check type of gas supply and manifold pressure and compare it with information on the rating plate.

 **WARNING**

At least twice a year, have an authorized service person clean and adjust the unit for maximum performance.

 **WARNING**

Adjustments and service work may be performed only by a qualified technician who is experienced in, and knowledgeable with the operation of Commercial Gas Cooking Equipment. However, to assure your confidence, contact your authorized service agency for reliable service, dependable advice or other assistance and for genuine factory parts.

DOOR GASKET REPLACEMENT:

The cooking compartment door gaskets are made of a silicone-type rubber material that is very durable but subject to wear during normal operation. Should the gasket leak, readjust the door gasket to the unit or replace it.

Procedure - Replace Gasket:

1. Open the cooking compartment door.
2. Remove the screws from the gasket retaining plate and remove.
3. Remove the old gasket and replace the new gasket.
4. Re-install gasket retaining plate with screws.
5. The door will be very difficult to close initially. Firmly slam the door to close. The gasket will set in about an hour enabling the door to close easily thereafter.

Exterior Panel Removal:

 **WARNING**

To prevent hazard in servicing the cooker, be certain that the steam supply boiler is shut down, the cold water shut-off valve is closed, and the electrical disconnect circuit breaker for the Cooker/Boiler unit is OFF before removing side panels.

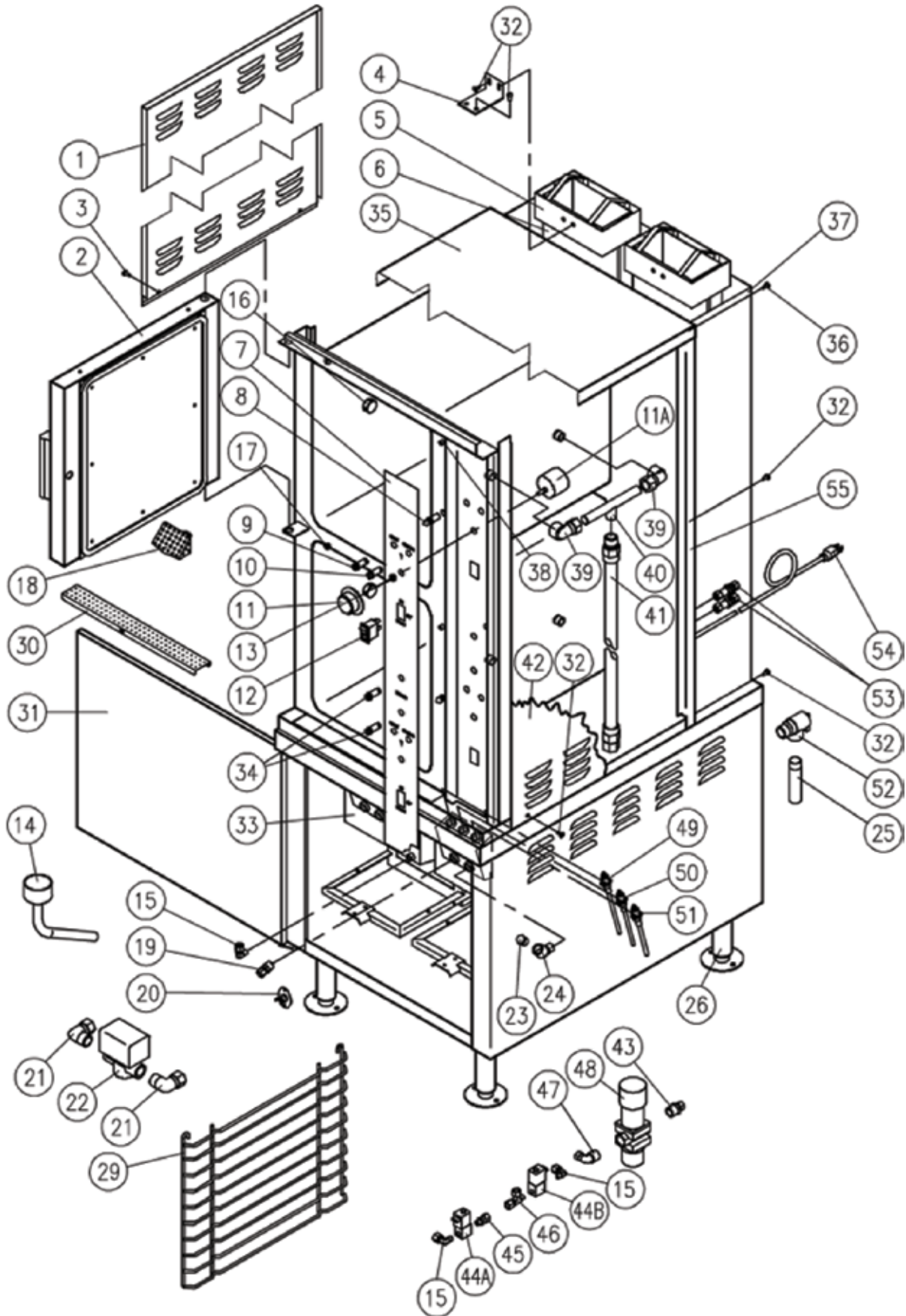
Access to all internal plumbing and electrical assemblies is from the right side and right front.

The right-side panel is removed by removing the bottom screw and pushing up on the panel until the lower lip disengages the frame.

BURNER TROUBLESHOOTING GUIDE

PROBLEM	PROBABLE CAUSE(S)	REMEDY
1. Burners do not come on.	<ol style="list-style-type: none"> a. Gas supply is off. b. Power switch is off. c. Probe not sensing water level. d.. Ignitor not functioning. e. Combination gas valve not opening. 	<ol style="list-style-type: none"> a. Locate supply line and turn on. b. Locate switch in cabinet and turn on. c. Clean probes, check wiring. d.. Check ignition module, relay. e. Check that control knob is in the ON position, check that 120 volts is at the gas valve.
2. Burners produce carbon deposits.	<ol style="list-style-type: none"> a. Incorrect orifice size. b. Incorrect gas supply. c. Incorrect gas pressure. 	<ol style="list-style-type: none"> a. Check size and correct. b. Check size and correct. c. Check gas pressure at manifold, correct if necessary.
3. Flash back.	<ol style="list-style-type: none"> a. Burning inside mixer tube. b. Incomplete combustion. c. Sooting of burner. d Misallocated ignitor. 	<ol style="list-style-type: none"> a. Reduce primary air. b. Increase burner input. c. Increase primary air. d Adjust ignitor.

COMPLETE EXPLODED VIEW



COMPLETE EXPLODED VIEW

ITEM	PART NO.	DESCRIPTION	QTY
1	97-6721	LEFT HAND SIDE PANEL	1
2	97-6173	DOOR ASSEMBLY	2
3	97-6884	SCREW, 10-32 x 1" STAINLESS STEEL	6
4	97-6837	FLUE SUPPORT	2
5	97-6838	FLUE TOP	2
6	97-7314	FLUE	2
7	97-7315	DECAL, LEXAN - ST10-2G	1
8	97-6178	STRIKER (3498)	2
8	97-6302	WASHER, STAINLESS STEEL	2
8	97-6650	LOCK WASHER	2
8	97-5601	NUT, 1/2-20 UNF	2
9	97-6170	PILOT LIGHT – GREEN	4
10	97-6171	PILOT LIGHT – RED	2
11	08-3826	DIAL TIMER	2
11A	08-6464	TIMER, 60-MINUTES	2
12	97-6367	SWITCH, 120V	2
13	98-6047	ROTARY SHAFT SEAL	2
14	97-6846	DELIME FUNNEL	1
15	97-6188	ELBOW, 3/8" COPPER x 1/8" MPT	4
16	97-6847	STEAM DIVERTERS	8
17	97-6340	RACK HANGER ASSEMBLY	12
18	97-6334	COMPARTMENT STRAINER	2
19	97-5619	THERMOSTAT FITTING	2
20	97-5897	HIGH LIMIT THERMOSTAT	2
*20	97-7316	HIGH LIMIT THERMOSTAT COVER	2
21	97-6849	ELBOW – BLOWDOWN, 3/4" C x 3/4" MPT	4
22	97-6283	BLOWDOWN VALVE, 3/4" C x 3/4" MPT	2
23	97-6850	BRASS PLUG, 3/8" MPT	2
24	97-6611	45o BRASS ST. ELBOW, 3/8" MPT	2
25	97-6891	RELIEF VALVE EXTENSION	2
26	97-6486	FLANGED LEG ASSEMBLY, 6"	2
*27	97-6406	SWIVEL CASTER, 5" c/w BRAKE, OPTIONAL	2
*28	97-6561	SWIVEL CASTER, 5", OPTIONAL	2
29	97-6175	PAN RACK, 6 PAN	4
30	97-6177	PERFORATED TROUGH	1
31	97-6852	CABINET DOOR ASSEMBLY	1
32	97-6739	SCREW, 10-32 x 1/2", STAINLESS STEEL	12
33	97-5922	GENERATOR TANK	2
34	97-5472	PILOT LIGHT, 120V – GREEN	2
35	97-7317	TOP COVER	1

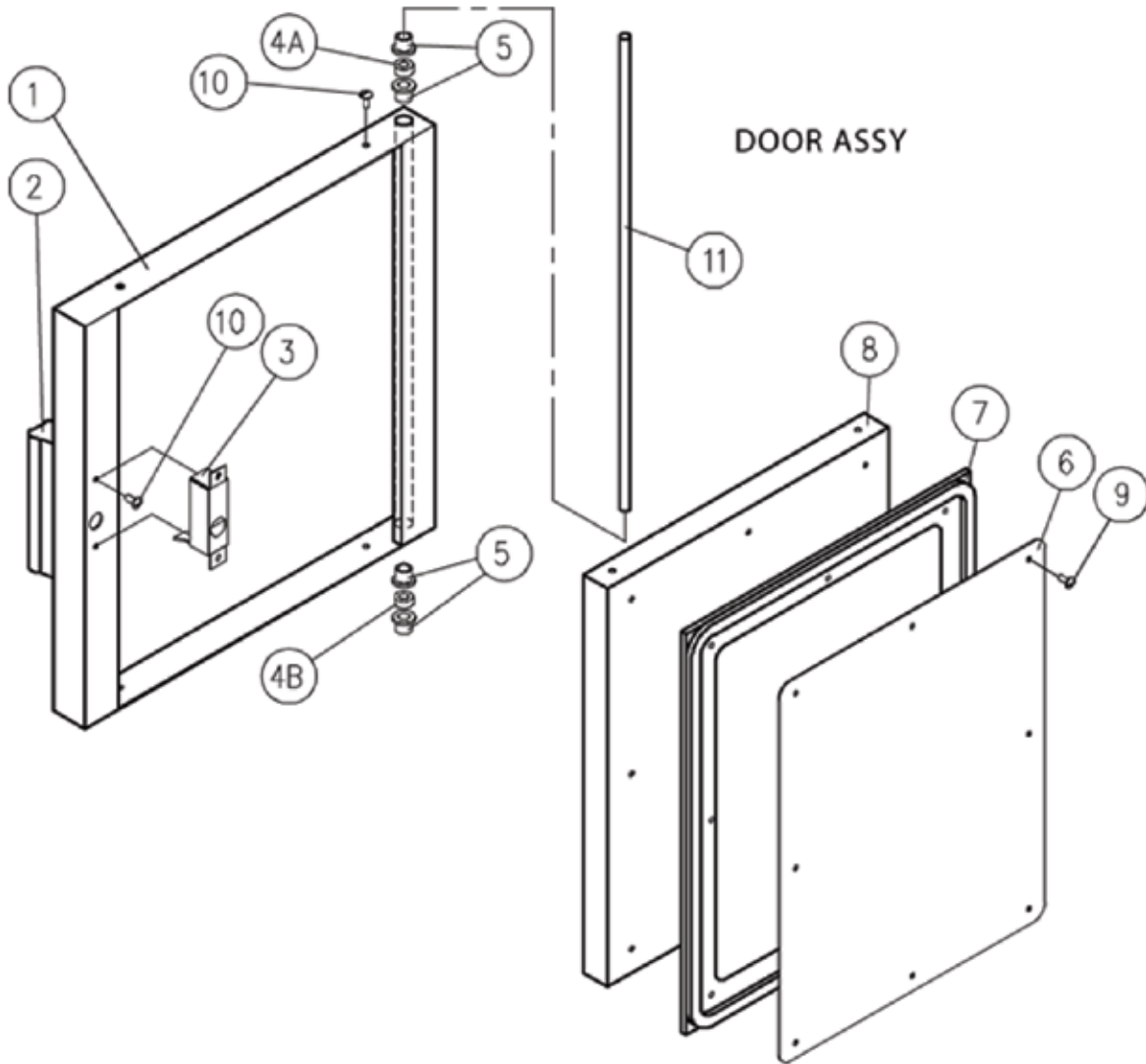
COMPLETE EXPLODED VIEW

ITEM	PART NO.	DESCRIPTION	QTY
36	97-6886	SCREW, 1/4-20 x 1/2", STAINLESS STEEL	2
37	97-7318	FLUE COVER	1
38	97-6191	DOOR SWITCH	2
38	97-6301	ACTUATOR PIN c/w CLIP	2
39	97-6876	ELBOW, 3/4" C x 3/4" FPT	8
40	97-6875	STEAM MANIFOLD	4
**41	97-6872	STEAM TUBE, BOTTOM LEFT, 18"	1
41	97-5988	STEAM TUBE, BOTTOM RIGHT, 30"	1
41	97-6873	STEAM TUBE, TOP LEFT, 48"	1
**41	97-6874	STEAM TUBE, TOP RIGHT, 36"	1
42	97-6869	SIDE PANEL	1
43	67-6860	CONNECTOR, 3/8" C x 1/2" MPT	1
44A	97-5952	GENERATOR FILL SOLENOID, UPPER CAVITY	1
44B	97-5952	GENERATOR FILL SOLENOID, LOWER CAVITY	1
45	97-6344	CONNECTOR, 3/8" C x 1/8" MPT	1
46	97-6327	TEE, 3/8" C x 3/8" C x 1/8" MPT	1
47	97-6862	ELBOW, 3/8" C x 1/2" MPT	1
48	97-6863	THERMOSTATIC COOLING VALVE	1
*48	97-6864	COOLING VALVE BRACKET	1
49	97-6865	PROBE, 2"	2
50	97-6866	PROBE, 2-1/2"	2
51	97-6867	PROBE, 3"	2
52	97-6219	RELIEF VALVE, 5 PSI	2
53	97-6226	WATER FILL – BULK HEAD, 3/8" C	2
54	97-5702	CORD SET, 120V	1
55	97-7319	BACK PANEL	1
*56	97-6888	DRAIN BOX ASSEMBLY	1
*57	97-7190	CONNECTOR, THERMOSTAT BULB	1
*58	97-6889	CONNECTOR – DRAIN, 3/4" C x 3/4" MPT	2
*59	97-6890	UNION ELBOW, 3/4" – DRAIN	2
*60	97-6664	THERMO SWITCH, LOAD COMPENSATING	2

* Not shown.

** Select as required.

DOOR ASSEMBLY



ITEM	PART NO.	DESCRIPTION	QTY
1	97-6227	DOOR FRAME (2840)	2
2	97-6432	DOOR HANDLE ASSEMBLY	2
*2	97-6771	DECAL	2
2	97-6232	LATCH ASSEMBLY (3900)	2
4A	97-7146	SPACER, UPPER	2
4B	97-7416	SPACER, LOWER	2
5	97-6261	DOOR BUSHING	8
6	97-6229	GASKET PLATE (2842)	2
7	97-6228	GASKET (2669)	2
8	97-6230	DOOR PANEL	2
9	97-6233	SCREW, 10-32 X 1/2"	16
10	97-6739	SCREW, 10-32 X 1/2"	12
11	97-6835	HINGE ROD (3977)	1

* Not shown.

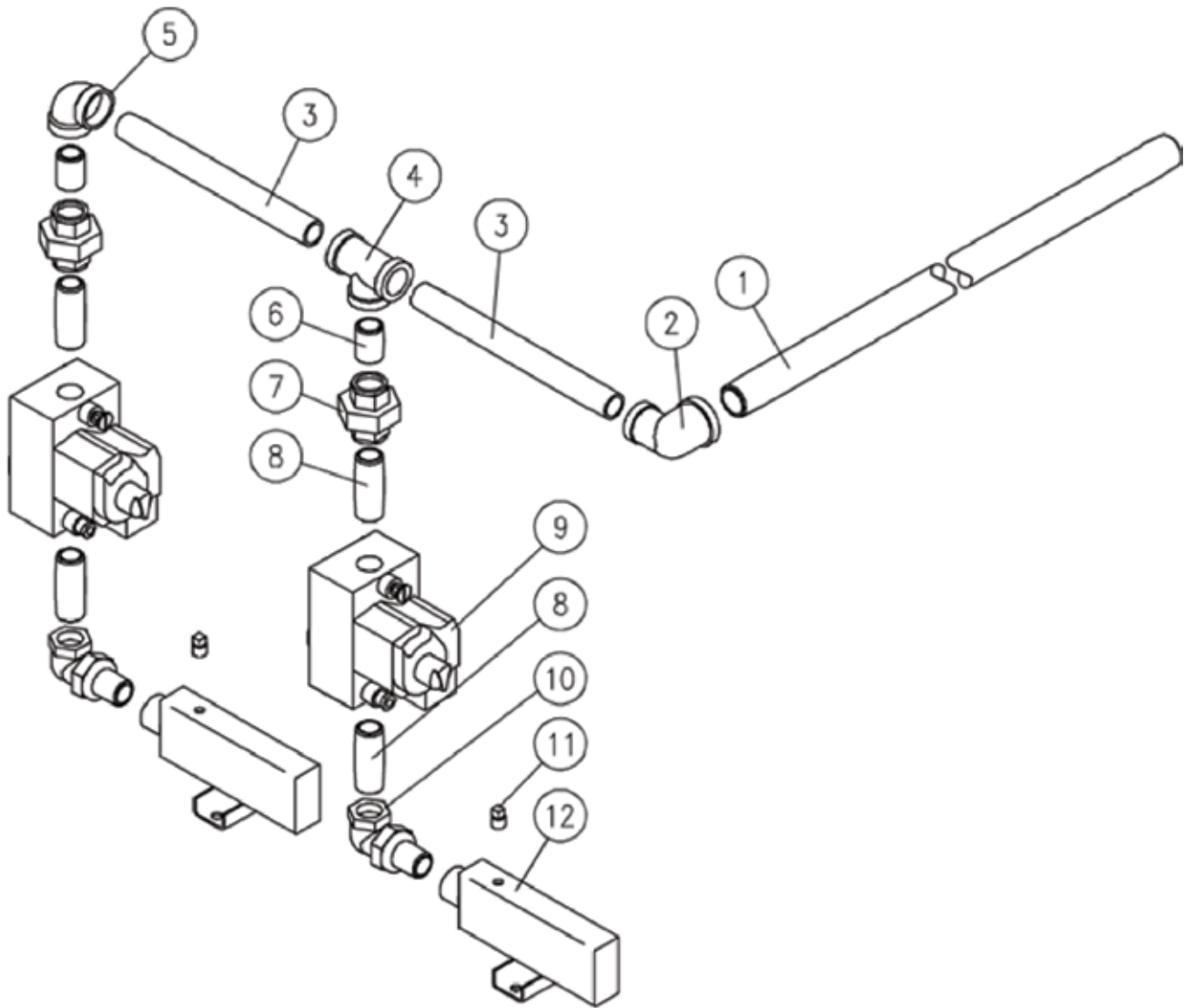
BURNER PARTS



ITEM	PART NO.	DESCRIPTION	TQ
1	97-6900	BURNER BRACKET ASSEMBLY	2
2	97-6901	BRACKER, PILOT ASSEMBLY	2
**3	97-6902	PILOT BURNER, NATURAL GAS	2
3	97-6903	PILOT BURNER, PROPANE GAS	2
4	97-6904	BURNER COVER	2
5	97-6905	ORIFICE JET, NATURAL GAS, #52	16
5	97-6906	ORIFICE JET, PROPANE GAS, #61	16

** Select as required.

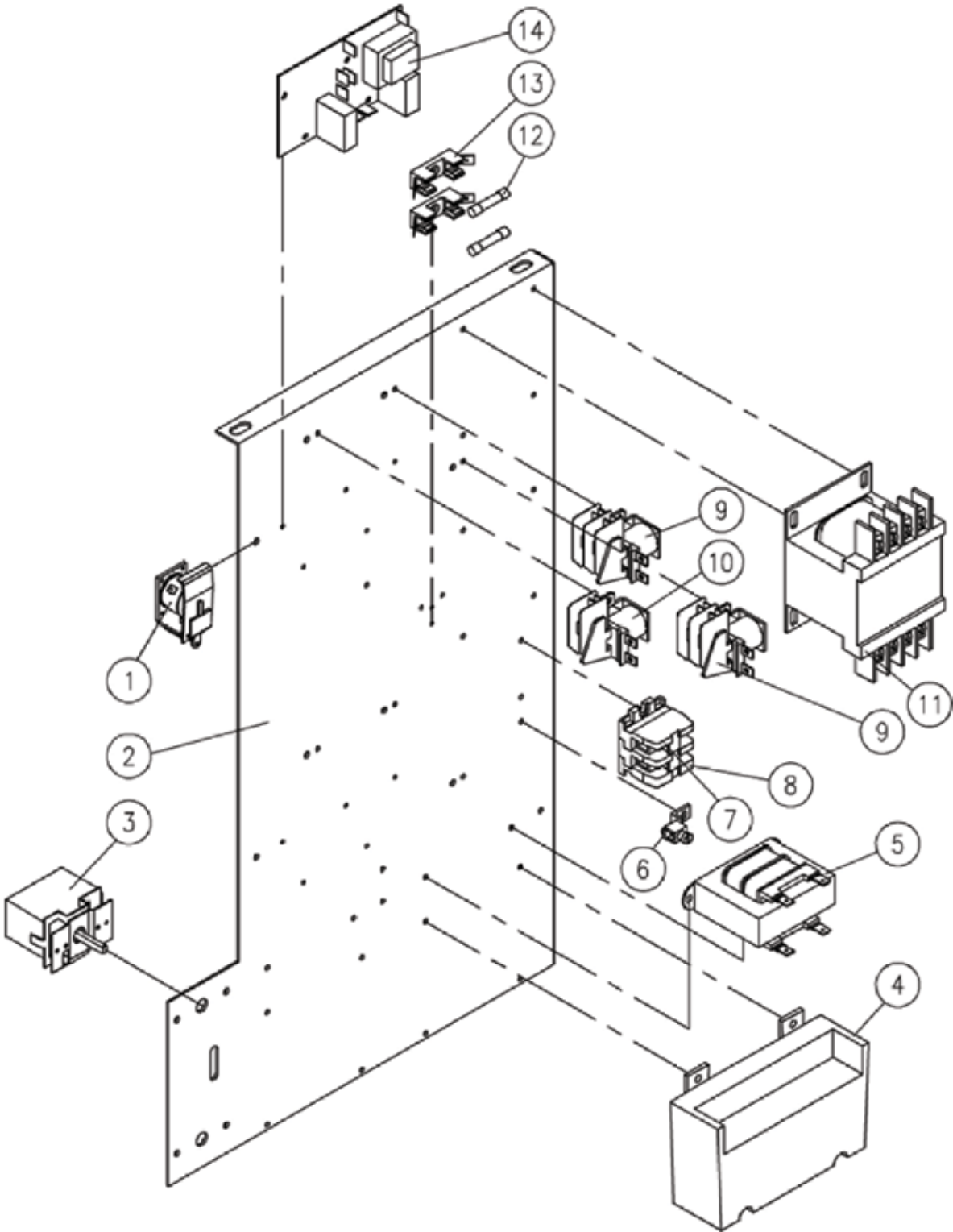
GAS ASSEMBLY



ITEM	PART NO.	DESCRIPTION	QTY
1	97-7320	NIPPLE, 3/4 NPT x 32 LG.	1
2	97-5555	REDUCING ELBOW, 150#, 1/2 NPT x 3/4 NPT	1
3	97-7321	NIPPLE, 1/2 NPT X 9-1/2 LG.	2
4	97-6859	TEE, 150#, 1/2 NPT	1
5	97-6910	ELBOW 90o, 150#, 1/2 NPT	1
6	98-6109	CLOSE NIPPLE, 1/2 NPT	2
7	97-5490	UNION, 150#, 1/2 NPT	2
8	97-7322	NIPPLE, 1/2 NPT x 2-1/8 LG.	4
**9	97-6461	COMBINATION CONTROL VALVE, NATURAL	2
**9	97-6462	COMBINATION CONTROL VALVE, PROPANE	2
10	09-4844	UNION ELBOW, 1/2 NPT	2
11	97-6908	SQUARE HEAD PIPE PLUG, 1/8 MPT	2
12	97-7323	MANIFOLD ASSEMBLY	2

** Select as required.

CONTROL BOARD



CONTROL BOARD

ITEM	PART NO.	DESCRIPTION	QTY
1	97-5945	BUZZER, 120V	2
2	97-6912	COMPONENT MOUNTING BOARD	1
3	97-5048	OPERATING THERMOSTAT	2
4	97-6913	IGNITION MODULE, INTERMITTENT PILOT	2
5	97-6914	TRANSFORMER, 115/230V – 24V CT	2
6	97-5441	GROUNDING LUG	1
7	10-6963	TERMINAL BLOCK	2
8	10-6962	TERMINAL BLOCK END SECTION	1
9	97-5992	RELAY, SPDT, 120V	4
10	97-5991	RELAY, DPDT, 120V	2
11	98-6138	TRANSFORMER, 240/480V – 120V, 50/60 Hz	2
**12	97-6186	GLASS FUSE, 2 AMP, 120V	2
**12	98-6134	GLASS FUSE, 1 AMP, 208-240V	2
13	97-5864	FUSE HOLDER	2
**14	97-5948	LEVEL CONTROL BOARD, 10k OHM, 120V	2
**14	97-6200	LEVEL CONTROL BOARD, 1 M OHM, 208-240V	4

** Select as required.