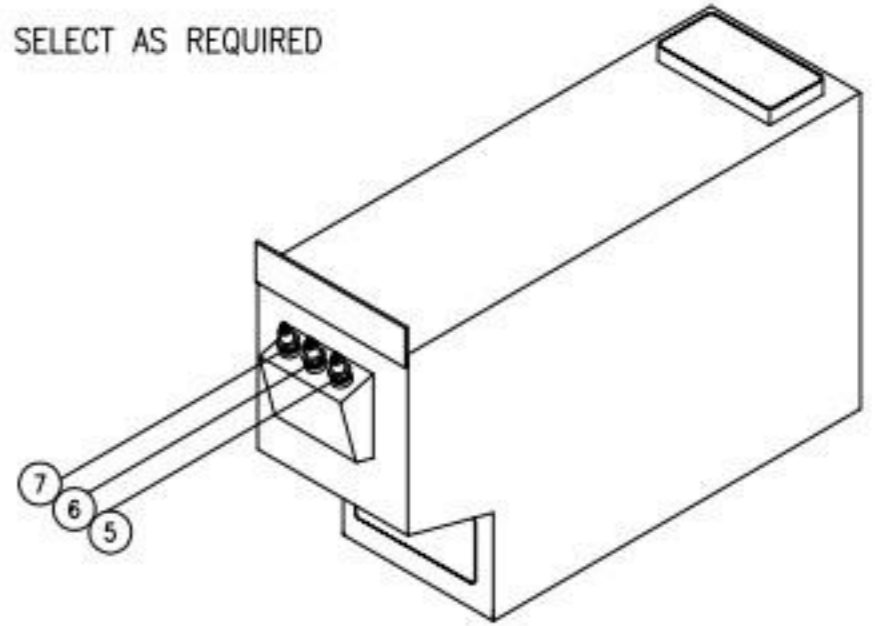


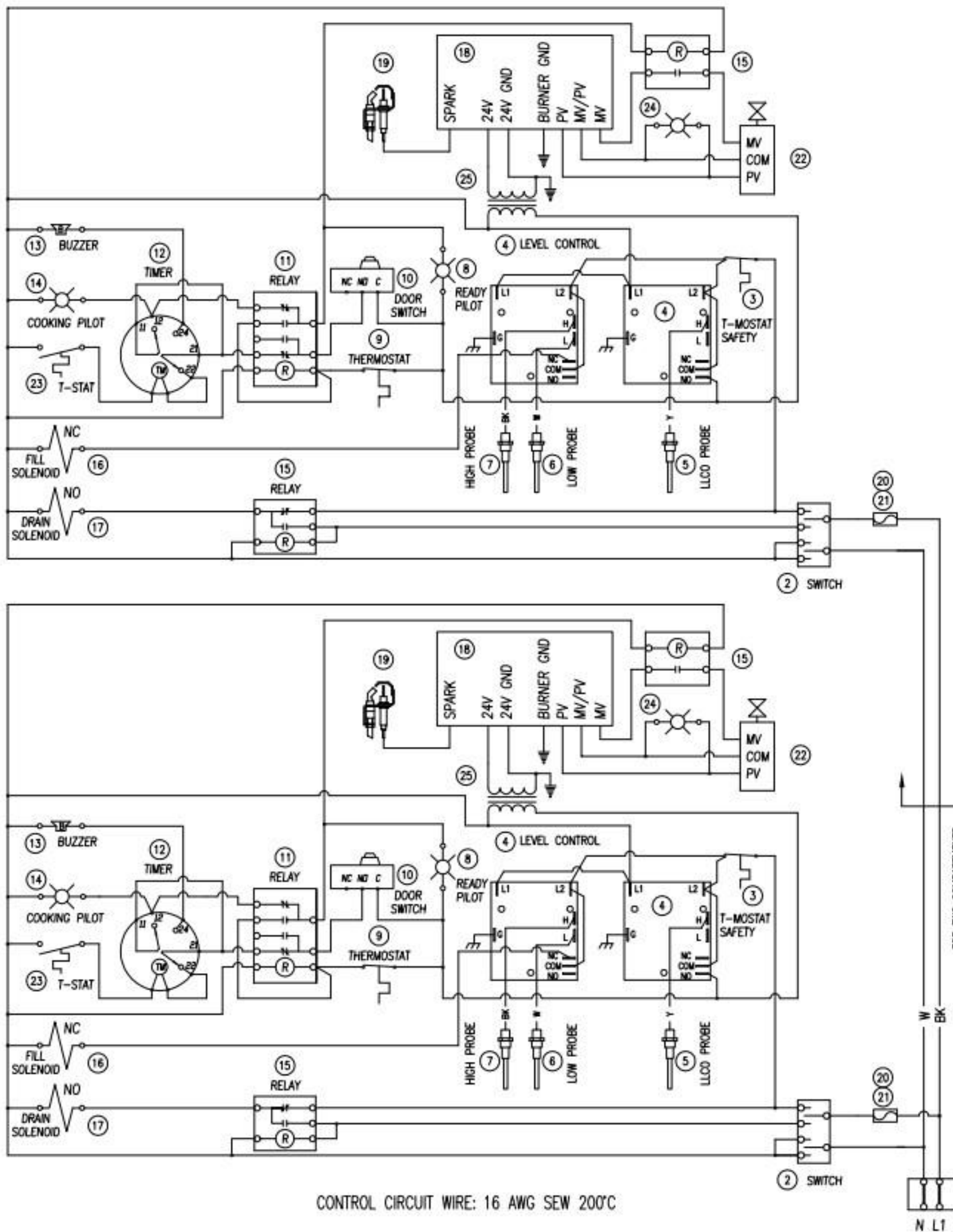
CONTROL CIRCUIT WIRE: 16 AWG SEW 200°C

ITEM	DESCRIPTION	PART NO.	QUANTITY	
			2 COMP	1 COMP
1A	TERMINAL BLOCK	4-22TB	2	2
1B	TERMINAL BLOCK END	4-22ES	1	1
2	SWITCH, ON/OFF/DELIME	9124-2	2	1
3	THERMOSTAT, HIGH LIMIT SAFETY	4874-3	2	1
4	LEVEL CONTROL, 10K OHM	4038-4	2	1
5	PROBE, LOW LEVEL CUT-OFF	3738-12	2	1
6	PROBE, LOW LEVEL	3738-11	2	1
7	PROBE, HIGH LEVEL	3738-10	2	1
8	READY PILOT, GREEN, 125V	4-PL04	2	1
9	THERMOSTAT, OPERATING	9126-1	2	1
10	DOOR SWITCH	9-3213	2	1
11	RELAY, DPDT	9-3174-1	2	1
12	TIMER, 60MIN.	8-6464	2	1
13	BUZZER	3821-1	2	1
14	COOKING PILOT, RED, 125V	4-PL07	2	1
15	RELAY, SPDT	9-3175-1	4	2
16	FILL SOLENOID VALVE	5162-1	2	1
17	BLOW-DOWN SOLENOID VALVE	3-S543	2	1
18	IGNITION MODULE	9210-2	2	1
*19	PILOT ASSY, NAT	5171-024	2	1
*19	PILOT ASSY, LP	5171-016	2	1
20	FUSE, 2A, 250V	9092-2	2	1
21	FUSE HOLDER	9068-1	2	1
*22	GAS VALVE, NAT	5450-1	2	1
*22	GAS VALVE, LP	5450-2	2	1
23	T-STAT, LOAD COMPENSATE	3-TS01	2	1
24	IGNITION PILOT, GREEN, 28V	4-PL04/2	2	1
25	TRANSFORMER, PRI-120V, SEC-24V	9-3383	2	1

* SELECT AS REQUIRED



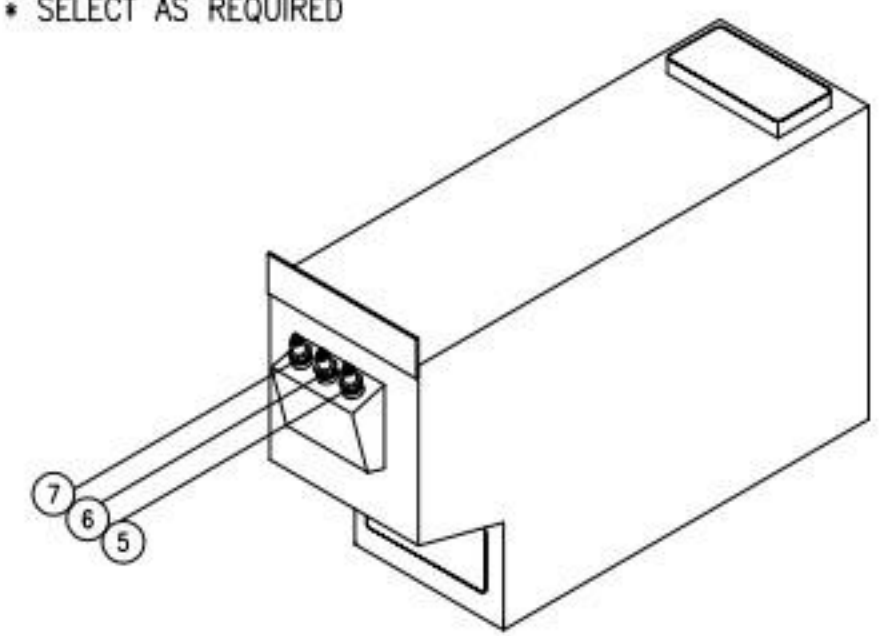
MODEL: ST10-2G
(120V)



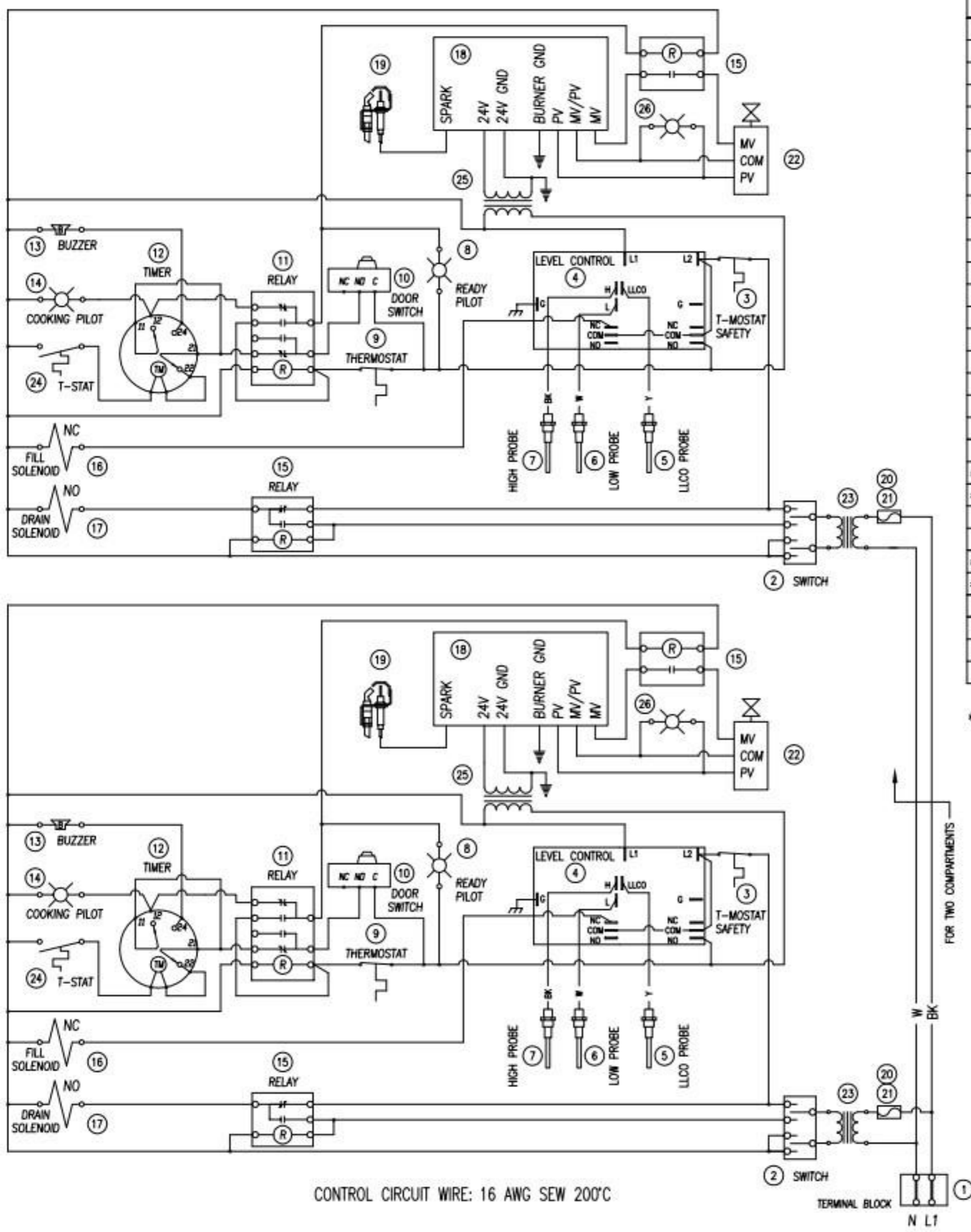
CONTROL CIRCUIT WIRE: 16 AWG SEW 200°C

ITEM	DESCRIPTION	PART NO.	QUANTITY	
			2 COMP	1 COMP
1A	TERMINAL BLOCK	4-22TB	2	2
1B	TERMINAL BLOCK END	4-22ES	1	1
2	SWITCH, ON/OFF/DELIME	9124-2	2	1
3	THERMOSTAT, HIGH LIMIT SAFETY	4874-3	2	1
4	LEVEL CONTROL, 1M OHM	5230-1	4	2
5	PROBE, LOW LEVEL CUT-OFF	3738-12	2	1
6	PROBE, LOW LEVEL	3738-11	2	1
7	PROBE, HIGH LEVEL	3738-10	2	1
8	READY PILOT, GREEN, 125V	4-PL04	2	1
9	THERMOSTAT, OPERATING	9126-1	2	1
10	DOOR SWITCH	9-3213	2	1
11	RELAY, DPDT	9-3174-1	2	1
12	TIMER, 60MIN.	8-6464	2	1
13	BUZZER	3821-1	2	1
14	COOKING PILOT, RED, 125V	4-PL07	2	1
15	RELAY, SPDT	9-3175-1	4	2
16	FILL SOLENOID VALVE	5162-1	2	1
17	BLOW-DOWN SOLENOID VALVE	3-S543	2	1
18	IGNITION MODULE	9210-2	2	1
*19	PILOT ASSY, NAT	5171-024	2	1
*19	PILOT ASSY, LP	5171-016	2	1
20	FUSE, 2A, 250V	9092-2	2	1
21	FUSE HOLDER	9068-1	2	1
*22	GAS VALVE, NAT	5450-1	2	1
*22	GAS VALVE, LP	5450-2	2	1
23	T-STAT, LOAD COMPENSATE	3-TS01	2	1
24	IGNITION PILOT, GREEN, 28V	4-PL04/2	2	1
25	TRANSFORMER, PRI-120V, SEC-24V	9-3383	2	1

* SELECT AS REQUIRED

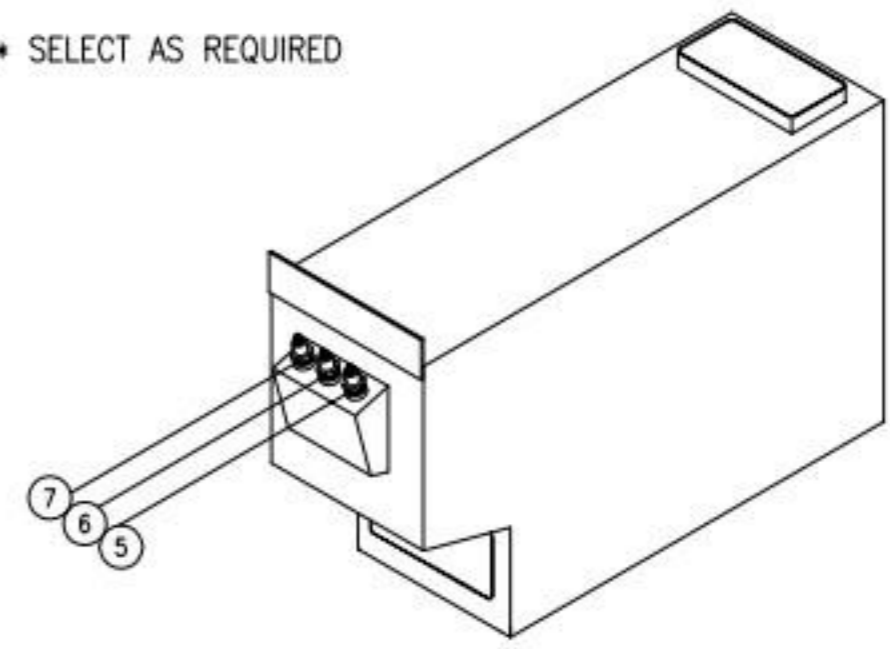


MODEL: ST10-2G
(120V, R.O.)

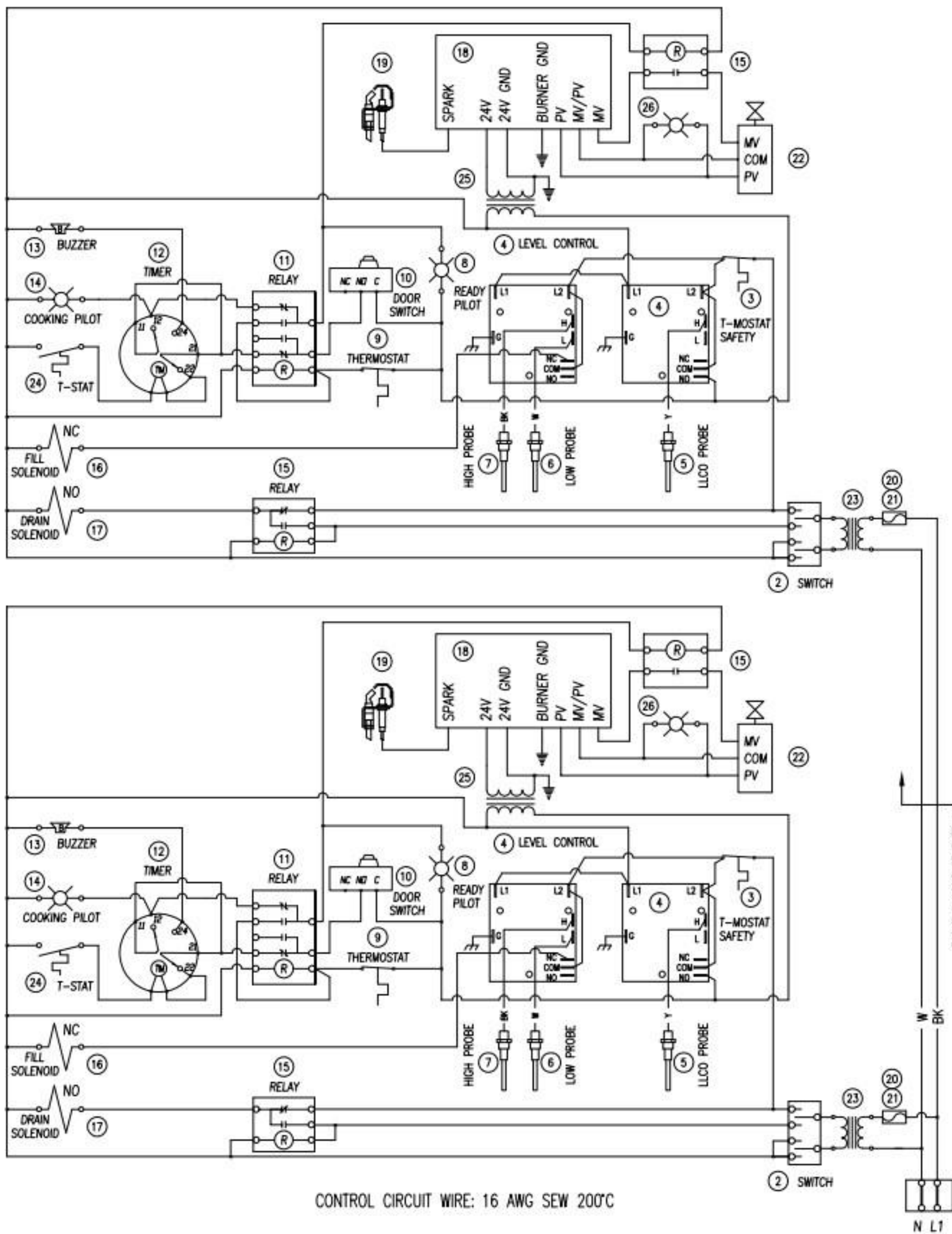


ITEM	DESCRIPTION	PART NO.	QUANTITY	
			2 COMP	1 COMP
1A	TERMINAL BLOCK	4-22TB	2	2
1B	TERMINAL BLOCK END	4-22ES	1	1
2	SWITCH, ON/OFF/DELIME	9124-2	2	1
3	THERMOSTAT, HIGH LIMIT SAFETY	4874-3	2	1
4	LEVEL CONTROL, 10K OHM	4038-4	2	1
5	PROBE, LOW LEVEL CUT-OFF	3738-12	2	1
6	PROBE, LOW LEVEL	3738-11	2	1
7	PROBE, HIGH LEVEL	3738-10	2	1
8	READY PILOT, GREEN, 125V	4-PL04	2	1
9	THERMOSTAT, OPERATING	9126-1	2	1
10	DOOR SWITCH	9-3213	2	1
11	RELAY, DPDT	9-3174-1	2	1
12	TIMER, 60MIN.	8-6464	2	1
13	BUZZER	3821-1	2	1
14	COOKING PILOT, RED, 125V	4-PL07	2	1
15	RELAY, SPDT	9-3175-1	4	2
16	FILL SOLENOID VALVE	5162-1	2	1
17	BLOW-DOWN SOLENOID VALVE	3-S543	2	1
18	IGNITION MODULE	9210-2	2	1
*19	PILOT ASSY, NAT	5171-024	2	1
*19	PILOT ASSY, LP	5171-016	2	1
20	FUSE, 1A, 250V	9092-1	2	1
21	FUSE HOLDER	9068-1	2	1
*22	GAS VALVE, NAT	5450-1	2	1
*22	GAS VALVE, LP	5450-2	2	1
23	TRANSFORMER, 208-240/120V	4-T265	2	1
24	T-STAT, LOAD COMPENSATE	3-TS01	2	1
25	TRANSFORMER, PRI-120V, SEC-24V	9-3383	2	1
26	IGNITION PILOT, GREEN, 28V	4-PLO4/2	2	1

* SELECT AS REQUIRED

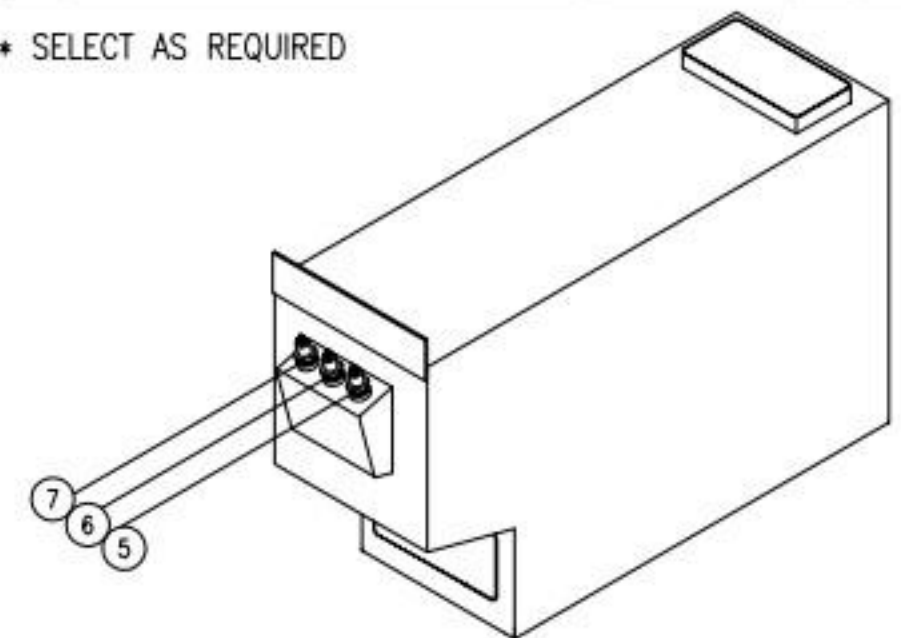


MODEL: ST10-2G
(220V)



ITEM	DESCRIPTION	PART NO.	QUANTITY	
			2 COMP	1 COMP
1A	TERMINAL BLOCK	4-22TB	2	2
1B	TERMINAL BLOCK END	4-22ES	1	1
2	SWITCH, ON/OFF/DELIME	9124-2	2	1
3	THERMOSTAT, HIGH LIMIT SAFETY	4874-3	2	1
4	LEVEL CONTROL, 1M OHM	5230-1	4	2
5	PROBE, LOW LEVEL CUT-OFF	3738-12	2	1
6	PROBE, LOW LEVEL	3738-11	2	1
7	PROBE, HIGH LEVEL	3738-10	2	1
8	READY PILOT, GREEN, 125V	4-PL04	2	1
9	THERMOSTAT, OPERATING	9126-1	2	1
10	DOOR SWITCH	9-3213	2	1
11	RELAY, DPDT	9-3174-1	2	1
12	TIMER, 60MIN.	8-6464	2	1
13	BUZZER	3821-1	2	1
14	COOKING PILOT, RED, 125V	4-PL07	2	1
15	RELAY, SPDT	9-3175-1	4	2
16	FILL SOLENOID VALVE	5162-1	2	1
17	BLOW-DOWN SOLENOID VALVE	3-S543	2	1
18	IGNITION MODULE	9210-2	2	1
*19	PILOT ASSY, NAT	5171-024	2	1
*19	PILOT ASSY, LP	5171-016	2	1
20	FUSE, 1A, 250V	9092-1	2	1
21	FUSE HOLDER	9068-1	2	1
*22	GAS VALVE, NAT	5450-1	2	1
*22	GAS VALVE, LP	5450-2	2	1
23	TRANSFORMER, 208-240/120V	4-T265	2	1
24	T-STAT, LOAD COMPENSATE	3-TS01	2	1
25	TRANSFORMER, PRI-120V, SEC-24V	9-3383	2	1
26	IGNITION PILOT, GREEN, 28V	4-PL04/2	2	1

* SELECT AS REQUIRED



MODEL: ST10-2G
(220V, R.O.)