

ASSEMBLED PRODUCTS® CORPORATION
IMPORTANT DOCUMENT - DELIVER TO MANAGER



OWNER'S MANUAL and TECHNICAL DOCUMENTATION

Model 280-3506



ADDITIONAL OPTIONS YOUR CART IS EQUIPPED WITH:

- Basket Bumpers (280-1928)
- Keyswitch & 2 Keys (280-1652)
- Second 35 AHR Battery (280-1664)



Mart Cart® is a quality product line of Assembled Products® Corporation

115 E. Linden • Rogers, Arkansas 72756 USA • (479) 636-5776 • (479) 636-3245 fax

1-800-548-3373 www.martcart.com

E



— IMPORTANT INFORMATION —

Please read before operating.

CONGRATULATIONS!

You have just purchased the best electric shopping cart on the market today. To assure you of the best and safest performance as well as longest life, please read the enclosed information. After reading this manual, should you have a service problem or need help, please call our Customer Service Department with the serial number of your cart (found on the seat support tube), at our toll free number:

1-800-548-3373 or (479) 636-5776.

DAMAGE: Check the shipping carton for any visible damage. Report the damage to the freight carrier immediately. File a claim with the carrier if actual damage to your cart has occurred. Check the contents of the carton. The contents should agree with the information listed on the packing list. Report any discrepancy to the carrier and the factory immediately.

TO ORDER PARTS: Call **1-800-548-3373 or (479) 636-5776.** Be sure to give the serial number to the Service Department personnel. The Mart Cart serial number is located on the seat support tube under the seat as shown in parts list portion of this manual.

TERMS: All parts will be shipped with approved credit card, check in advance or C.O.D. Commercial accounts are allowed 15 day terms from date on invoice with approved credit.

FREIGHT: All freight will be paid by the customer. Special consideration will be given to items under warranty coverage.

ATTENTION: It is the responsibility of the owner of this cart to maintain the cart in a safe and reliable operating condition at all times.

NOTE: Specifications found in this manual subject to change without notice.

— IMPORTANT SAFETY INSTRUCTIONS —

Please read before operating.

WARNINGS

- Never attempt to charge the battery in this cart without using an electrical outlet that is protected by a GFCI.
- Replace charging cord if plug is damaged or if the cord is worn or frayed. Never use the charging cord without proper grounding. Do not use if plug does not have three prongs.
- Never allow the cart to be used out-of-doors or on any surface that is not level.
- Always disconnect power before servicing.
- See **"Daily Maintenance Checklist,"** and follow instructions.
- Cart can roll. Enter and exit cart with care.

OPERATING PROCEDURES

- New carts will need charging! Charge batteries for 24 hours prior to first use.
- **THIS CART IS FOR USE INDOORS ON A FLAT, LEVEL SURFACE ONLY.**
- **DO NOT STAND ON CART.** (See *"Operating & Warning Instructions"* on cart).
- After battery is charged, disconnect power supply cord BEFORE operating cart.

- **DO NOT** exceed the load limitations as shown on the cart.
- Return power cord to circular cavity when not charging.
- **DO NOT** allow children to operate or play on cart. Keep cart secured with key (if applicable), at service counter.

DAILY MAINTENANCE CHECK LIST

For optimum cart availability and performance, the following items should be checked daily:

- **ELECTRIC CORD**—Replace cord if cord is worn or frayed, 3-pronged plug is broken or reel (*optional*) will not retract. Be sure power outlet provides protection through an operating "Ground Fault Circuit Interrupter" (GFCI).
- **SEAT AND MOUNTING**—Tighten if necessary. If cracks or rust occur, or if seat rocks loosely, replace at once.
- **SEAT SWITCH**—Test and replace if not working properly. Cart must stop when weight is removed from seat.
- **THROTTLE**—Test for smooth "start, acceleration, deceleration, and stop." Repair if necessary. Charge or replace battery if needed.
- **ANTI-TIP CASTERS**—Replace if broken. Maintain height adjustment of 1/8" to 1/2" above floor level.
- **GENERAL**—Repair or replace any component that may cause a potential safety hazard.
- **APPEARANCE**—Wipe off and clean as needed for customer satisfaction and for store's public image.

BATTERY CHARGING INSTRUCTIONS

Please read before charging.

When you hear the low battery alarm beeping it is time to charge the battery. Plug the AC cord into a GFCI outlet only. The battery will fully charge in 4 hours. You may leave the charger plugged in whenever the cart is not in use as it will not harm the battery.

A good rule of thumb is to charge your battery all night, every night, and at every opportunity.

NOTE: Under normal conditions, the battery will last more than 2 years or longer if the above recommendations are followed. Replace with original Mart Cart battery only. Mart Cart is not responsible for any adverse effects caused by replacement with any other type of battery.

IMPORTANT: Your cart has been equipped with an AGM (Suspended Electrolyte) Battery during the manufacturing process as original equipment. The manufacturer recommends that you replace the original battery only with the same type and rating to prevent damage to your cart's internal components, charging system, or personal injury to you and your customer.

BATTERY REPLACEMENT INSTRUCTIONS

Please read before replacing battery.

Be Responsible! Recycle old battery or dispose of according to local or national codes. See below, under **DISPOSAL**.

To Replace Battery: (Read precautions on batteries, under Charging Instructions and Safety Precautions, to avoid any sparks)

1. Turn off key switch (if equipped, or flip On/Off switch to "Off" position). Disconnect charger cord from wall outlet, if plugged in.
2. Reach under right rear of back cover and pull latch, then tilt chair forward.
3. Remove rear cover.
4. Untie battery cover strap and remove battery cover.

CAUTION: Do not cross battery posts with metal object!

5. Remove old battery and place new battery.
6. Reinstall battery cover. It will only fit one way.
7. Secure battery cover strap.
8. Before reinstalling cover, check wheel condition, and general condition of the chair.
9. Reinstall rear cover and tilt chair back.
10. Test cart for proper operation. Charge battery if necessary.

DISPOSAL

Please read before disposing your old battery.

Spent batteries must be treated as hazardous waste and disposed of in accordance with local, state and federal guidelines. The BATTERY ACT of 1996 applies to battery disposal and recycling. The life expectancy of the Mart Cart is 7-10 years. The life expectancy of the battery can be 2 years or longer with recommended charging procedures. The disposal of the Mart Cart can be administered by any local metal recycling center. The recycling of the battery can be administered by any local battery recycling center.

ADDITIONAL INFORMATION

SEAT SWITCH

The seat switch is located under seat. Pressure (weight) on the seat closes the control circuit, and allows the cart to operate.

VARIABLE SPEED CONTROL

The cart's speed is regulated by a potentiometer. This provides extremely smooth acceleration from 0 to 2.2 MPH, and is located in the control box on the steering column.

CIRCUIT BREAKER

The circuit breaker is designed to protect your electrical system from transient overloads or electrical shorts. Either could cause serious damage without a circuit breaker to open the circuit. The circuit breaker is a manual reset type. It requires manual resetting once it has been tripped. It is located on the battery cover.

CHARGING

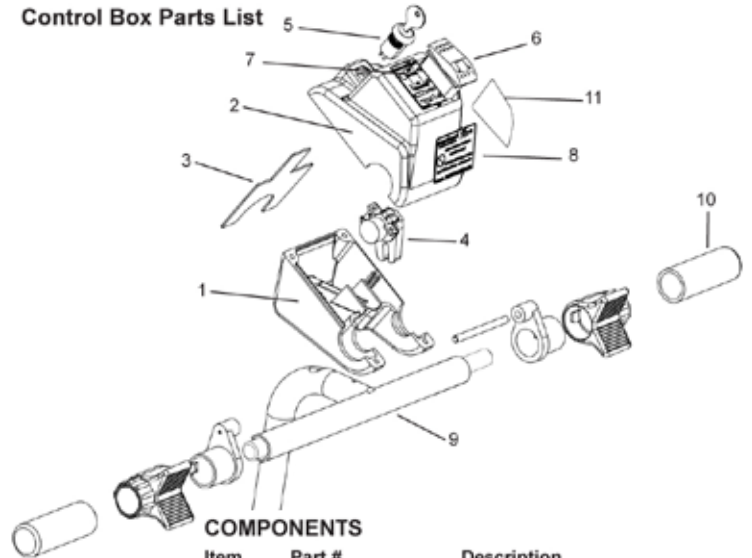
HOW IT WORKS: When the power supply cord is plugged into the store's electrical outlet the battery charger is energized. The charger sends approximately 14.5 volts to the battery for charging. A third wire (yellow) from the charger output inhibits the PWM until the power to the charger is disconnected. The motor circuit is interrupted until charging is complete. **NOTE:** The cart will not move under power when the battery is being charged. If the cart moves while plugged in, check the power to your outlet before calling for service.

CONTROL BOX

The master control box is located on top of the steering column. It contains the **RUN/STOP/HORN** switch, and optional key switch. The cover can be removed by removing the four bottom screws.

PARTS LISTS AND SCHEMATICS

Control Box Parts List



COMPONENTS

Item	Part #	Description
1	280-1178	Control Box Bottom Cover
2	280-1177	Control Box Top Cover
3	280-1184	Control Box Divider
4	280-1187	Potentiometer Assembly
5	200-1640	Key Switch (optional)
6	280-1405	Rocker Switch Assembly
7	280-1118	Top Control Box Overlay
8	280-1185	Front Control Box Overlay
9	280-1199	Steering Column w/Rod & Grips
10	280-1170	Vinyl Grip
11	280-2113	Intelli-Charge™ Indicator deca

OPTIONS FOR 280-3506 CART

BASKET BUMPERS 280-1928

Protective basket bumpers are located on the front two corners of the basket.

KEY SWITCH & 2 KEYS 280-1652

Key switch comes standard with two keys. Provides store with security of Mart Cart.

SECOND 35 AMP HOUR BATTERY 280-1664

Twice the run time with second battery in parallel. Five (5) Year Warranty (on batteries only).

DUAL HAND BASKET TRAY 280-1386

Two mounted trays that securely hold the store's provided hand baskets.

SMALL BASKET 280-1385

18" basket with 2,800 cubic inches of cargo space. Basket dimensions: 18" x 10.50" x 15"

JUMBO BASKET 280-1374

24" basket with 11,000 cubic inches of cargo space. Basket dimensions: 24" x 26" x 15"

— DECALS FOUND ON 3506 MART CART® ELECTRIC SHOPPING CART —

Please call 1-800-548-3373 if your decals are missing or are needing replacement.

DAILY MAINTENANCE CHECK LIST
 For optimum Cart availability and performance, the following items should be checked daily:

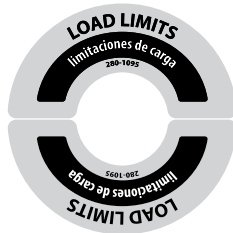
- ELECTRIC CORD AND/OR REEL** - Replace cord and/or reel if cord is worn or frayed, 3 pronged plug is broken or reel will not rotate. Do not use Power Cord provided protection through an operating Ground Fault Circuit Interrupter (GFCI).
- SEAT & MOUNTING** - Tighten if necessary, if cracks or reel occur, or if seat rocks loosely, replace as soon. Lubricate axles or tracks with vaseline as required. Make sure Seat Lock is in good working condition.
- SEAT SWITCH** - If cart is equipped with a seat switch, test and replace if not working properly. Cart must stop when weight is removed from seat.
- THROTTLE** - Test for smooth "start", acceleration, deceleration and "stop". Repair if necessary. Charge or replace.
- ANTI-TIP CASTERS** - Replace if broken. Maintain height adjustment of 1/8" to 1/2" above floor level.
- GENERAL** - Repair or replace any component that would cause a potential "Safety Hazard".
- APPEARANCE** - Wipe off and clean as needed for customer satisfaction and for store's "Public Image".

LISTA DE MANTENIMIENTO DIARIO
 Para la disponibilidad óptima y el desempeño, del Carrito, los siguientes artículos deben chequearse diario:

- LA CUERDA O EL CARRETE ELÉCTRICOS** - Reemplazela la cuerda o el carrete si la cuerda está gastada o pelada, el botón de 3 puntas está roto o el carrete no rotará. No usar el cable de protección que pasa a través de un interruptor de Circuito por Tierra (GFCI) operativo.
- EL ASIENTO Y LA MONTAJE** - Apriete si es necesario. Si aparece grietas, se cae o si el asiento se mueve fuertemente, reemplazelo inmediatamente. Lubricar ejes o rieles con vaselina como sea requerido. Asegúrese que el Carrito que Asiento está en buena condición para trabajar.
- COMUNICADOR DEL ASIENTO** - Si el carrito está equipado con un comunicador del asiento, examínalo y reemplázalo si no trabaja apropiadamente. El carrito debe parar cuando se quite peso del asiento.
- REPOSICIONADOR** - Ajustado por el control de la aceleración, la deceleración y "stop". Repare si es necesario. Cargue e intente la batería si es necesario.
- LAS RUEDAS DE ANTI-TIPAJE** - Reemplazelas si están quebradas. Mantenga el ajuste de la altura de 1/8" a 1/2" encima del nivel de piso.
- SEÑAL** - Repare o reemplazé cualquier componente que cause un "Peligro de Seguridad" potencial.
- LA APARIENCIA** - Limpie y limpie cuando sea necesario para la satisfacción del cliente y para "la Imagen Pública" de la tienda.

FOR PARTS OR SERVICE CALL: 800-548-3373 or 479-636-8776
 PARA PARTES O SERVICIO LLAME: 800-548-3373 o 479-636-8776

200-1127



280-1095

IN-STORE USE ONLY
 PARA USO DENTRO DE LA TIENDA SOLAMENTE

**FOR OUR VALUED CUSTOMERS...
 BECAUSE WE CARE.™**

PARA NUESTROS ESTIMADOS CLIENTES...
 PORQUE USTED ES IMPORTANTE

Warning

FIRE HAZARD, USE ONLY 280-1214 MART CART BATTERY.
 DO NOT MODIFY THE WIRING HARNESS OR THE BATTERY COVER.

280-1509

IN-STORE USE ONLY
 PARA USO DENTRO DE LA TIENDA SOLAMENTE

NO CHILDREN IN BASKET!
 ¡NO NIÑOS EN LA CANASTA!

200-185-01

PATENTED
 U.S. PATENT NO. 7106090 B2

280-3007

<p>WARNING PLEASE READ TO AVOID PERSONAL INJURY USE AT YOUR OWN RISK INTENDED FOR USE INDOORS ON LEVEL SURFACE ONLY</p> <ol style="list-style-type: none"> Read operating instructions or ask for assistance before using. Use extra caution getting "ON" or "OFF" cart. Cart is on wheels and may roll. You must be seated to operate cart. Keep feet and legs inboard while operating. Do not stand on cart. Do not lean "ON" or "OVER" the side of the cart. NO CHILDREN IN BASKET. 	<p>ADVERTENCIA FAVOR LEER PARA EVITAR ACCIDENTES. USE BAJO SU PROPIO RIESGO. SE INTENDE PARA USO DENTRO DE LA TIENDA SOLO EN SUPERFICIES PLANAS.</p> <ol style="list-style-type: none"> Lea las instrucciones de operación o pida ayuda antes de usar. Tenga mucha precaución al "SUBIR" y "BAJAR" del carrito. No olvide que el carrito está sobre ruedas. Usted tiene que estar sentado para operar el carrito. Mantenga los pies y piernas en el carrito cuando lo este usando. Favor de no pararse en el carrito. No se recargue "EN" ni "SOBRE" el costado del carrito. No ponga niños en la canastilla.
--	--

200-1387

PULL LATCH UNDERNEATH TO REMOVE COVER

280-1307

CAUTION
 HIGH VOLTAGE
 Disconnect power before servicing

000-1183

CHARGE EVERY NIGHT, ALL NIGHT AND AT EVERY OPPORTUNITY
 mart cart

280-1992

<p>OPERATING INSTRUCTIONS PLEASE READ BEFORE OPERATING</p> <ol style="list-style-type: none"> Turn key on and/or press the "Run" switch. Thumb levers rotate to power the cart. Press top lever forward to go forward. Press bottom lever down to go in reverse. To stop, release the thumb levers and/or press the "stop" switch. If needed, ask cashier for assistance to get your items to your vehicle. Under no circumstances are carts to be taken outside the store. <p>DO NOT REMOVE FROM STORE</p>	<p>INSTRUCCIONES DE OPERACION LEA ANTES DE USAR</p> <ol style="list-style-type: none"> Prenda la llave y/o apriete el interruptor de encendido. Las palancas del pulgar giran para accionar el carrito. Apriete la palanca para avanzar hacia adelante. Presione la palanca inferior hacia abajo para conducir de reversa. Para detenerse, suelte la palanca o presione el botón de "stop". De ser necesario, pida ayuda a algún empleado de la tienda para llevar sus compras a su vehículo. Bajo ninguna circunstancia deberá sacar el carrito fuera de la tienda. <p>NO SAQUE ESTE CARRITO DE LA TIENDA</p>
--	---

280-1570

WARNING

TO PREVENT PERSONAL INJURY FROM ELECTRICAL SHOCK - DO NOT USE CHARGING CORD IF:

- THE ELECTRICAL CORD IS NOT PROTECTED BY A GROUND FAULT CIRCUIT INTERRUPTER (GFCI).
- THE ELECTRICAL CORD OR PLUG IS DAMAGED OR WORN. REPLACE BEFORE USING WITH ONLY 3 WIRE CORD AND PLUG OF SAME TYPE.

280-1531

MART CART X12
 WWW.MARTCART.COM
 800-548-3373 • 479-636-8776

HANDLE GRIPS POWER THE CART
 Turning up goes forward
 Turning down is reverse

USE INDOORS ON LEVEL SURFACE ONLY!
DO NOT REMOVE FROM STORE!

280-1185

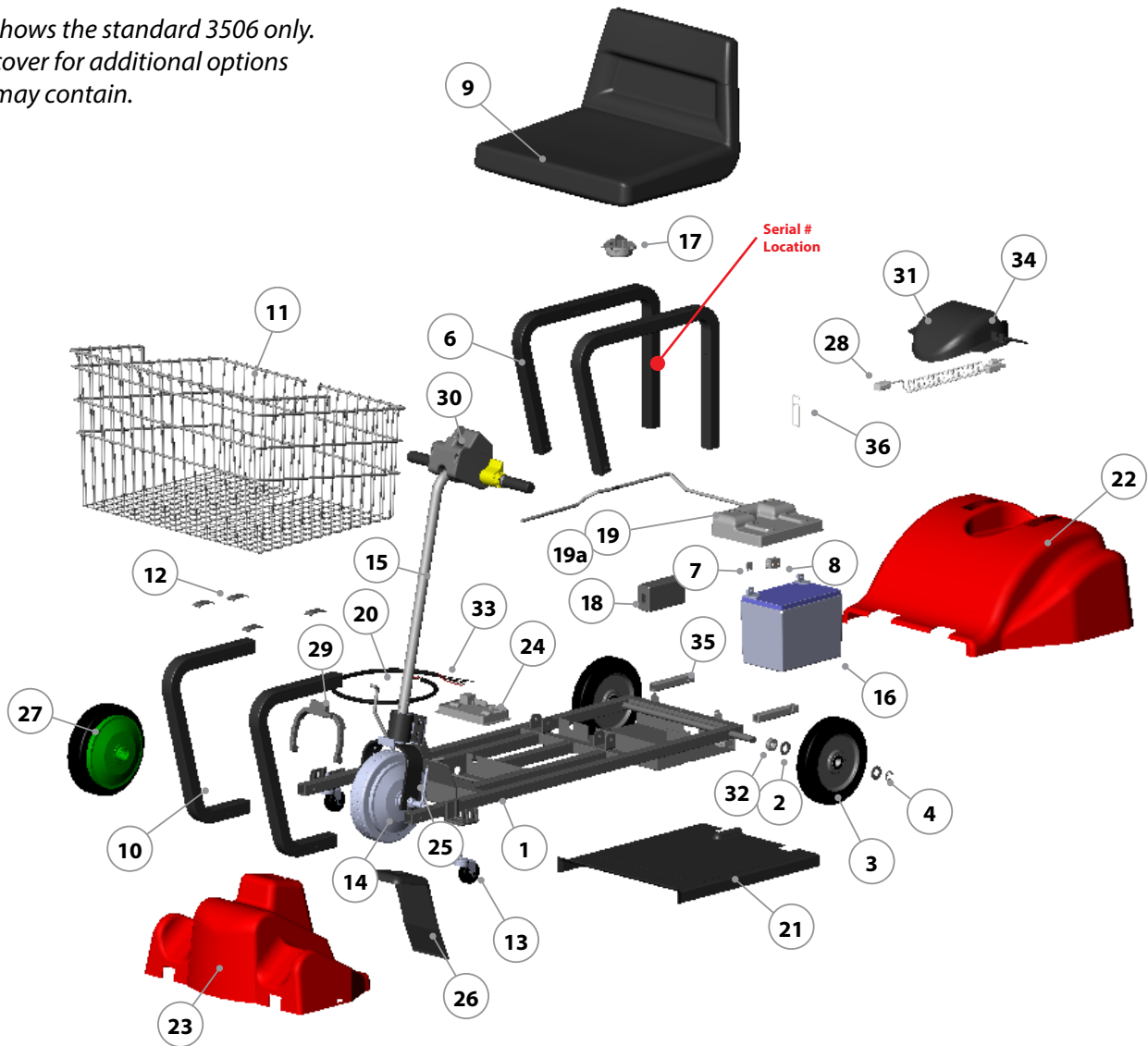
Quick Change Battery Cover
 NO TOOLS NEEDED
 LIFT HERE TO REMOVE



280-1624

280-1783

Drawing shows the standard 3506 only.
See front cover for additional options
your cart may contain.

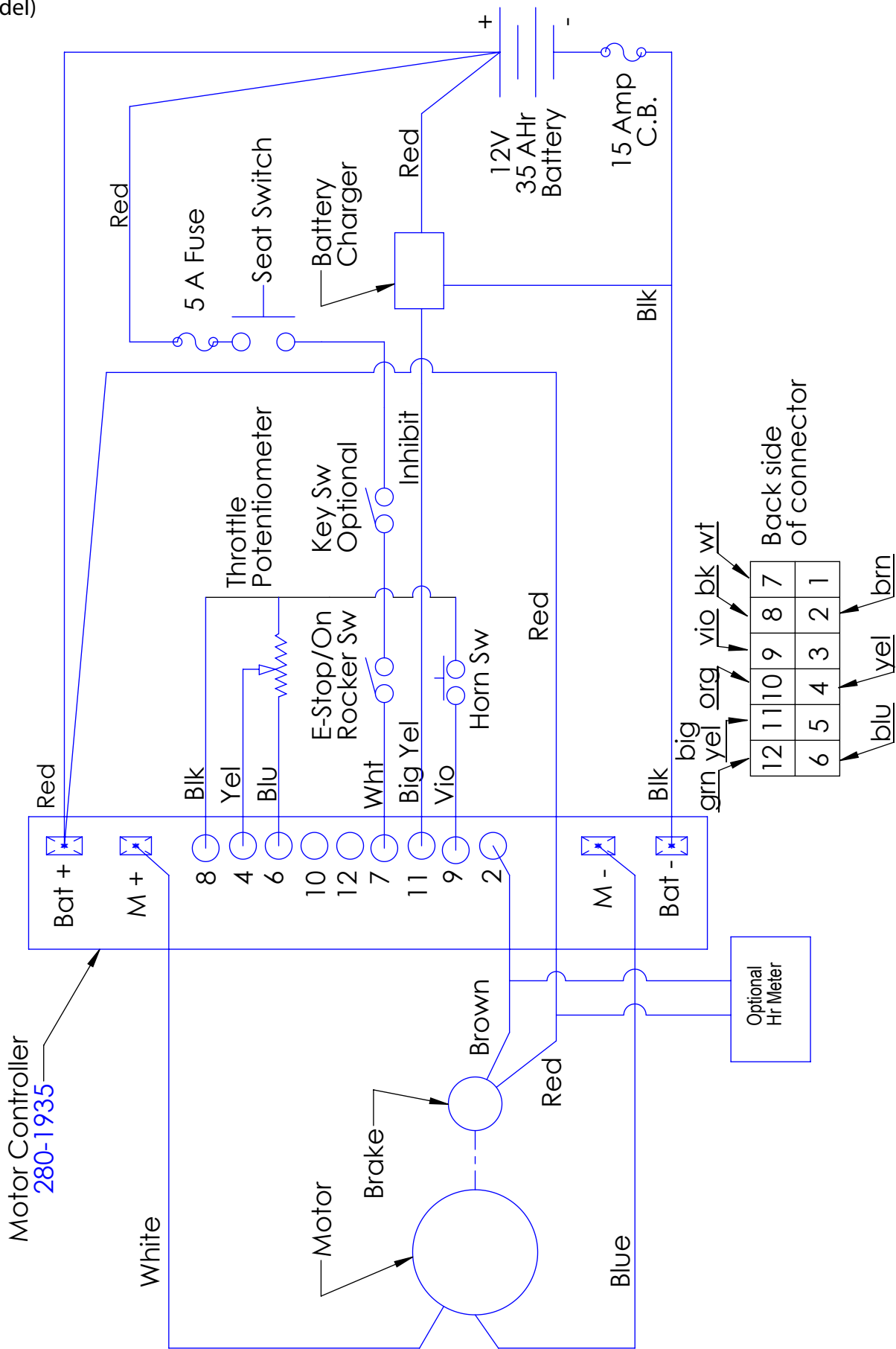


Item	Part No.	Description
1	280-1800	Main Frame
2	000-1224	5/8" Bushing (2 on each wheel)
3	280-1268	8" Wheel, Poly-U
4	000-1075	5/8" "E" Type Retaining Ring
6	280-1261	Seat Mount Tube
7	280-1799	Fuse, 5 AMP Mini
8	260-1228	Circuit Breaker, 15 AMP
9	280-1888	Low-back Seat
10	280-1264	Basket Tube
11	200-1802	Basket
12	200-1236	Basket Mounting Clip (4)
13	200-1052	2" Caster
14	280-2012	Hub Motor/Wheel/Tire - Green
15	see pg. 3	Steering Column
16	280-1214	Battery, 12V, 35 Ahr
17	200-1279	Seat Switch
18	280-1938	12 VDC Charger -10 AMP
19	280-1712	Main Wire Harness/Battery Cover Assy.
19a	280-1389	12V, Complete Assembly, Main Harness and Hardware for 2nd Battery

Item	Part No.	Description
20	280-0031	Steering Wire Harness w/Connectors
21	280-1281	Floor Cover
22	280-1280	Rear Cover (select color option)
23	280-1279	Front Cover (select color option)
24	280-1935	Motor Controller
25	280-1269	Fork Assembly
26	280-1441	Bridge Cover
27	280-1346	Tire/Outer Shell
28	280-1797	Charging Cord, coiled
29	280-1626	Wire Guide (see note)
30	see pg. 3	Control Box
31	280-1637	Cord Cover (see note)
32	280-1335	Grommet 5/8"
33	280-1646	Wire Harness Controller to Motor (see note)
34	280-1274	Cord Cover Lid (see note)
35	280-1889	Tube, Rear Corner Support
36	280-1711	Spring Latch for Seat

NOTE: #29 (wire guide) and #33 (wire harness) can be ordered as an assembly part [280-1656](#)
#31 (cord cover) & #34 (cord cover lid) can be ordered as an assembly part [280-0004](#)

Electrical Schematic - Model 280-3506
(Basic model)



MATERIAL SAFETY DATA SHEET

Product Name: Sealed Maintenance Free Lead-Acid Batteries

DATE: 1/5/2005 ISSUED BY: ENGINEERING TELEPHONE NO. 479-636-3245

HAZARDOUS COMPONENTS

COMPONENTS	WEIGHT %	TLV	LD50	LC50	LC50
			ORAL	INHALATION	CONTACT
Lead (Pb, PbO ₂ , PbSO ₄)	about 70%	N/A	(500) mg/kg	N/A	N/A
Sulfuric Acid	about 20%	1mg/m ³	(2,140) mg/kg	N/A	N/A
Fiberglass Separator	about 5%	N/A	N/A	N/A	N/A
ABS Plastic	about 5%	N/A	N/A	N/A	N/A

PHYSICAL DATA

COMPONENTS	DENSITY	MELTING POINTS	SOLLUBILITY (H ₂ O)	ODOR	APPEARANCE
Lead	11.34	327.4° C (Boiling)	None	None	Silver-Gray Metal
Lead Sulfate	6.2	1070° C (Boiling)	40 mg/l(15° C)	None	White Powder
Lead Dioxide	9.4	290° C (Boiling)	None	None	Brown Powder
Sulfuric Acid	about 1.3	about 114° C (Boiling)	100%	Acidic	Clear Colorless Liquid
Fiberglass Separator	N/A	N/A	Slight	Toxic	White Fibrous Glass
ABS Plastic	N/A	N/A	None	No Odor	Solid

FLAMMABILITY DATA

COMPONENTS	FLASHPOINT	EXPLOSIVE LIMIT	COMMENTS
Lead	None	None	
Sulfuric Acid	None	None	
Hydrogen		4% - 72.4%	Sealed batteries can emit hydrogen if over charged (float voltage > 2.40 VPC).
Fiberglass Separator	N/A	N/A	Toxic vapors may be released. In case of fire, wear self-contained breathing apparatus.
ABS Plastic	None	N/A	Temp. over 300° C (572° F) may release combustible gases. In case of fire: wear positive pressure self-contained breathing apparatus.

FIRST AID

SULFURIC ACID PRECAUTIONS

Skin Contact:	Flush with water, see physician if contact area is large or if blisters form.
Eye Contact:	Call physician immediately and flush with water until physician arrives.
Ingestion:	Call physician. If patient is conscious, flush mouth with water, have patient drink milk or sodium bicarbonate solution. National Poison Center: 1-800-222-1222

REACTIVITY DATA

COMPONENT	Sulfuric Acid
STABILITY	Stable at all temperatures
POLYMERIZATION	Will not polymerize
INCOMPATIBILITY	Reactive metals, strong bases, most organic compounds
DECOMPOSITION PRODUCTS	Sulfuric dioxide, trioxide, hydrogen sulfide, hydrogen
CONDITIONS TO AVOID	Prohibit smoking, sparks, etc. from battery charging area. Avoid mixing acid with other chemicals

SPILL OR LEAK PROCEDURES

Steps to take in case of leak or spill:	If sulfuric acid is spilled from a battery, neutralize acid with bicarbonate (baking soda), sodium carbon (soda ash), or calcium oxide (lime). Flush area with water and discard to the sewage system. Do not allow unneutralized acid into sewage system.
Waste disposal method:	Neutralized acid may be flushed down the sewer. Spent batteries must be treated as hazardous waste and disposed of according to local, state, and federal guidelines. A copy of this MSDS must be supplied to any scrap dealer or secondary lead smelter with battery.

PROTECTION

EXPOSURE SITE	PROTECTION	COMMENTS
SKIN	Rubber gloves, Apron	Protective equipment must be worn if the battery is cracked or otherwise damaged. A respirator should be worn during reclaim operations if the TLV is exceeded.
RESPIRATORY	Respirator (for lead)	
EYES	Safety goggles, Face Shield	

ELECTRICAL SAFETY

Due to the battery's low internal resistance and high power density, high levels of short circuit current can be developed across the battery terminals. Do not rest tools or cables on the battery. Use insulated tools only. Follow all installation instructions and diagrams when installing or maintaining battery systems.

HEALTH HAZARD DATA

LEAD: The toxic effects of lead are accumulative and slow to appear. It affects the kidneys, reproductive, and central nervous systems. The symptoms of lead overexposure are anemia, vomiting, headache, stomach pain (lead colic), dizziness, loss of appetite, and muscle and joint pain. Exposure to lead from a battery most often occurs during lead reclaim operations through the breathing or ingestion of lead dust or fumes.
SULFURIC ACID: Sulfuric acid is a strong corrosive. Contact with acid can cause severe burns on the skin and in eyes. Ingestion of sulfuric acid will cause GI tract burns. Acid can be released if the battery case is damaged or if vents are tampered with.
FIBERGLASS SEPARATOR: Fibrous glass is an irritant of the upper respiratory tract, skin and eyes. For exposure up to 10F/CC use MSA Comfoff with type H filter. Above 10F/CC up to 50F/CC use Ultra-Twin with type H filter. This product is not considered carcinogenic by NTP or OSHA.
ALL DATA MUST BE PASSED TO ANY SCRAP DEALER OR SMELTER WHEN BATTERY IS RESOLD.



ASSEMBLED
115 E. Linden • Rogers, Arkansas 72756 USA
(479) 636-5776 • Fax: (479) 636-3245
International (001) 479-636-5776

www.martcart.com
800-548-3373

MC1-MODEL 3506-OM-180215-EN

Specifications are subject to change without notice.



Printed in the USA.