

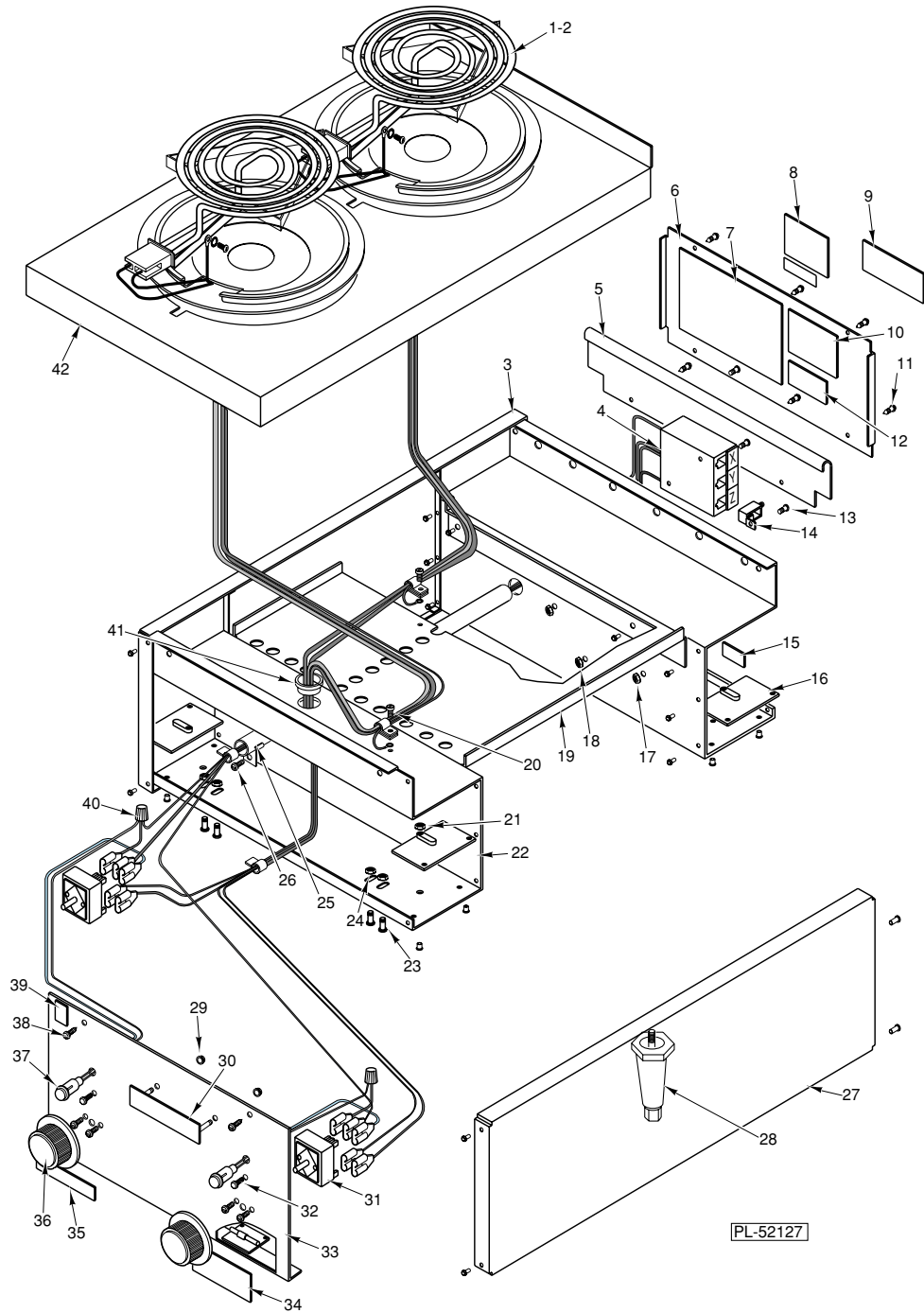
VULCAN

*SERVICE MANUAL & CATALOG OF
REPLACEMENT PARTS*

HOTPLATE

*MODEL
MEH14*





MEH14 HOTPLATE

MEH14 HOTPLATE

ILLUS. PL-52127	PART NO.	NAME OF PART	AMT.
1	00-920220-00011	Element W/Drip Pan & Ring (208V.)	2
2	00-920220-00012	Element W/Drip Pan & Ring (240V.)	1
3	00-920199	Rear Cross Member Assy.	1
4	00-825126-00040	Block-Terminal	1
5	00-920207	Strip-Back Hold Down	1
6	00-336215-00002	Screw-Arm	1
7	00-920222-00010	Label-Wiring Diagram	1
8	00-825368	Plate-Serial Number	1
9	00-805782	Label-Disconnect Power	1
10	00-908805	Label-Ground Warning	1
11	SD-036-61	Self-Tapping Screw 10-16 x 1/2 Slotted Truss Hd., Type B	1
12	00-805780	Marker-Supply	1
13	SC-053-05	Mach. Screw 10-24 x 3/8 Truss Hd., Slotted	2
14	FE-023-68	Lug-Solderless	1
15	00-805727	Label-Ground Marker	1
16	00-820114	Bracket Assy.	4
17	NS-044-09	Nut Assy. 10-24 Hex Keps	2
18	NS-011-07	Mach. Nut 6-32 Hex	1
19	00-920233	Tray-Top Drip	1
20	SC-053-05	Mach. Screw 10-24 x 3/8 Truss Hd., Slotted	2
21	NS-044-09	Nut Assy. 10-24 Hex Keps	2
22	00-920205	Front Cross Member Assy.	1
23	SC-053-05	Mach. Screw 10-24 x 3/8 Truss Hd., Slotted	2
24	NS-044-09	Nut Assy. 10-24 Hex Keps	4
25	00-920097-00001	Conduit	2
26	SC-053-05	Mach. Screw 10-24 x 3/8 Truss Hd., Slotted	2
27	00-423047-00029	Panel-Side	2
28	00-804405	Leg - With Adjustable Foot	4
29	NS-047-68	Lock Nut 1/8	2
30	00-417700-00003	Nameplate	1
31	00-920221	Switch (240V.)(Infinite Heat)	2
32	PB-004-69	Plug-Hole	2
33	00-920550-00001	Front Panel Assy.	1
34	00-805782	Label-Disconnect Power	1
35	00-344646-00001	Label	1
36	00-920396	Knob-Control	2
37	00-906440-00013	Light-Red Signal	2
38	SD-036-61	Self-Tapping Screw 10-16 x 1/2 Slotted Truss Hd., Type B	4
39	00-086556-00001	Label	1
40	00-911501-00005	Connector-Wire	1
41	FE-016-02	Bushing - Snap	1
42	00-920671-00001	Top Assy.	1

MEH14 ELECTRIC MEDIUM DUTY COUNTER HOTPLATE

SERVICE

WARNING: THE HOTPLATE AND ITS PARTS ARE HOT. USE CARE WHEN OPERATING, CLEANING OR SERVICING THE HOTPLATE.

WARNING: DISCONNECT ELECTRICAL POWER SUPPLY AND PLACE A TAG AT THE DISCONNECT SWITCH TO INDICATE THAT YOU ARE WORKING ON THE CIRCUIT BEFORE PERFORMING ANY SERVICE.

REPLACING PILOT "ON" LIGHT OR INFINITE (CONTROL) SWITCH

1. Remove both control knobs by grasping outer edge and pulling straight out, without twisting or turning.
2. Remove two screws at top of front panel. Pull the top edge to open.
3. Disconnect leads to pilot or infinite switch and remove the damaged component. Mark disconnected leads to identify them.
4. Mount the new infinite switch with fasteners provided. The new pilot light is snapped into place from the front of the panel.
5. Connect leads to their corresponding terminals on the new component. Check the completed circuit against the circuit diagram on back of the hotplate.
7. Reverse steps 1 and 2 to close front panel.

REPLACING HEATING ELEMENT

1. Remove the heating element support projection from the notch in the element ring (located under the element and secured to the element). Then push the element assembly toward the notch in the drip pan to dislodge the spring clip from the element ring.
2. Maneuver the element and support assembly so that it can be pulled out of the drip pan along with its connecting wires.
3. Lift out the drip pan.
4. Remove the element ring by grasping it with both hands and pulling straight up so that it snaps out of the top panel opening.
5. Loosen the two screws at the end of the heating element and located on the side of the insulator block. Slide the insulator block to expose the terminals
6. Disconnect the leads from the damaged element and reconnect them to the new element.
7. Slide the insulator block over the element terminals so that the threaded end of the screws are guided to slots on the central web of the insulator block. Tighten screws securely to prevent the insulator block from sliding.
8. Reverse Steps 1-4 to reassemble, and put the hot plate back into operation.