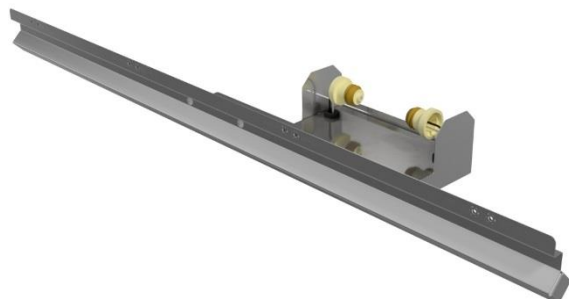




OWNER'S MANUAL

MODEL 180150 – LED LIGHT RETROFIT KIT



Supplier Name: **MARSHALL AIR SYSTEMS, INC.**
Address: 419 Peachtree Drive South
Charlotte, NC 28217

Model #: _____
Serial #: _____
Date Received: _____
Date Installed: _____
Telephone #: 704-525-6230
Fax #: 704-525-6229
Service Referral #:800-722-3474
Local Service: _____
Local Service #: _____

PRODUCT DESCRIPTION

The 180150 LED Light Retrofit Kit replaces existing incandescent light bulbs for RR5-42 and RR5-48.5 Fry Dump Stations. It provides a bright pleasing light that fully illuminates the dump station work area. LED lights are extremely energy efficient, long lasting and are constructed with no glass components for greater safety.

The LED Light Retrofit Kit fits into one existing pair of light sockets. The other pair of light sockets is covered by a Light Socket Cover that is provided with the kit.

GENERAL SPECIFICATIONS

Model: 180150
Height: 4.000"
Depth: 5.500"
Width: 39.000"

Voltage: 120 Volts
Amps: 75 mA

FOR YOUR SAFETY

DO NOT STORE OR USE GASOLINE OR OTHER FLAMMABLE VAPORS OR LIQUIDS IN THE VICINITY OF THIS OR ANY OTHER APPLIANCE.

WARNING: IMPROPER INSTALLATION, ADJUSTMENT, ALTERATION, OR MAINTENANCE CAN CAUSE PROPERTY DAMAGE, INJURY OR DEATH. READ THE INSTALLATION, OPERATION AND MAINTENANCE INSTRUCTIONS THOROUGHLY BEFORE INSTALLING OR SERVICING THIS EQUIPMENT.

KEEP THIS MANUAL IN A SAFE PLACE AND RETAIN FOR FUTURE USE.



TABLE OF CONTENTS

INSTALLING THE LED LIGHTS1 - 5
REPLACEMENT PARTS6

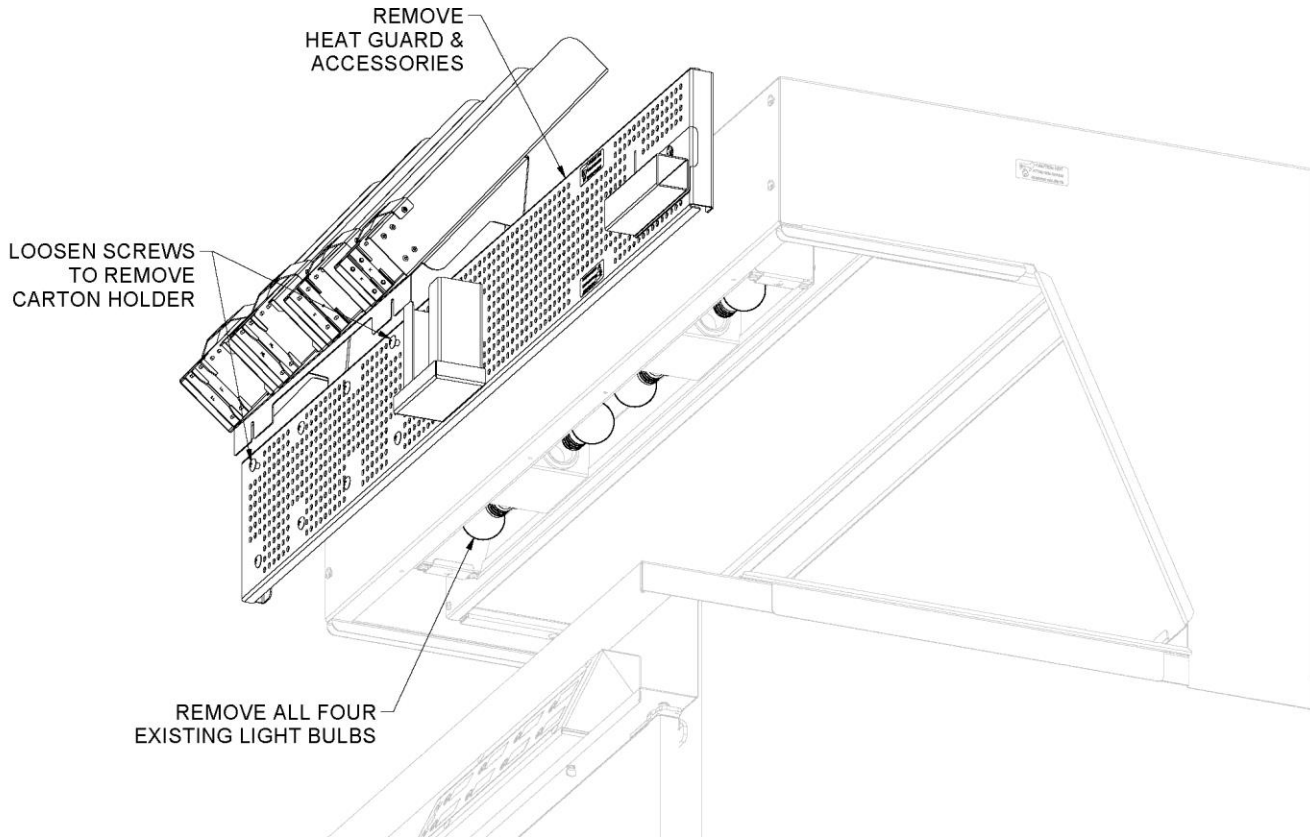
OWNER'S MANUAL

MODEL 180150 – LED LIGHT RETROFIT KIT



OWNER'S MANUAL

MODEL 180150 – LED LIGHT RETROFIT KIT

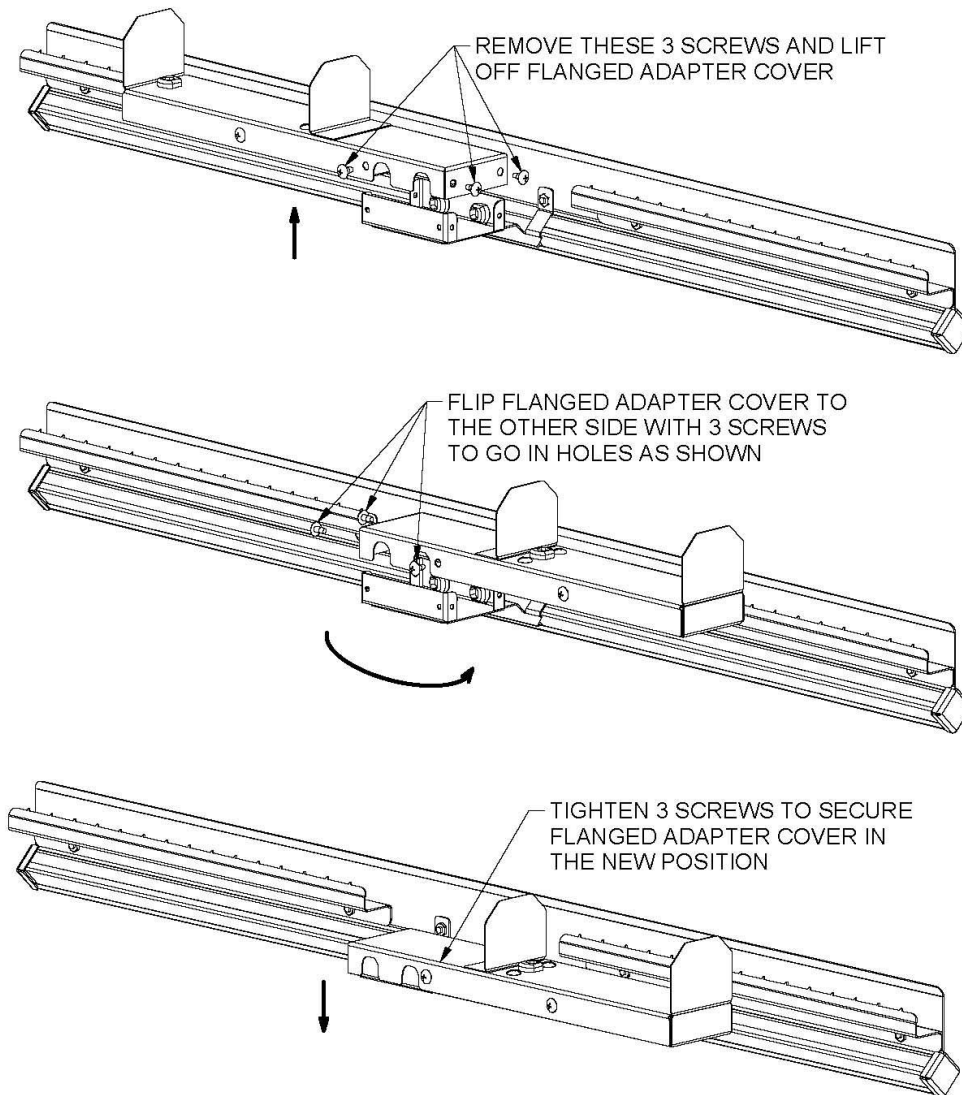


BEFORE INSTALLING THE LED LIGHTS

1. BEFORE INSTALLING THE LED LIGHTS, UNPLUG POWER FOR THE DUMP STATION. FAILURE TO DO SO MAY RESULT IN ELECTRICAL SHOCK.
2. To prevent injury, allow dump station to cool if needed. Do not install while dump station is hot.
3. If there is a Carton Holder loosen two screws to lift off Carton Holder.
4. Lift off and remove Heat Guard.
5. After the dump station has been unplugged and cooled remove all four existing light bulbs.
6. Shine a flashlight into the two empty light sockets on the right side. Inspect for any debris or obstruction. Remove any obstruction such as a broken off tip of a previous light bulb.

OWNER'S MANUAL

MODEL 180150 – LED LIGHT RETROFIT KIT

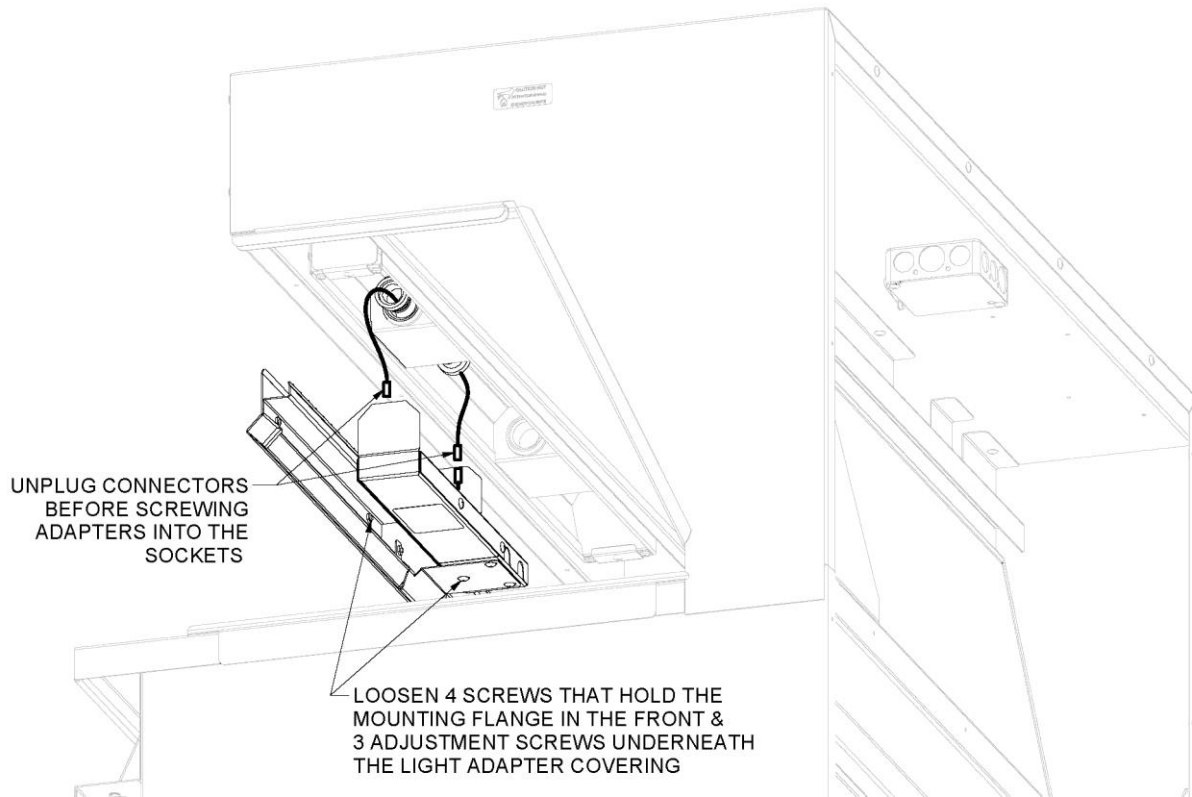


ADJUST THE LED LIGHTS IF REQUIRED

1. If light sockets on the right side are unable to be used, the LED Light Kit can be adjusted as shown above to use light sockets on the other side. If light sockets on the right side can be used skip this step and go to the next instruction.

OWNER'S MANUAL

MODEL 180150 – LED LIGHT RETROFIT KIT

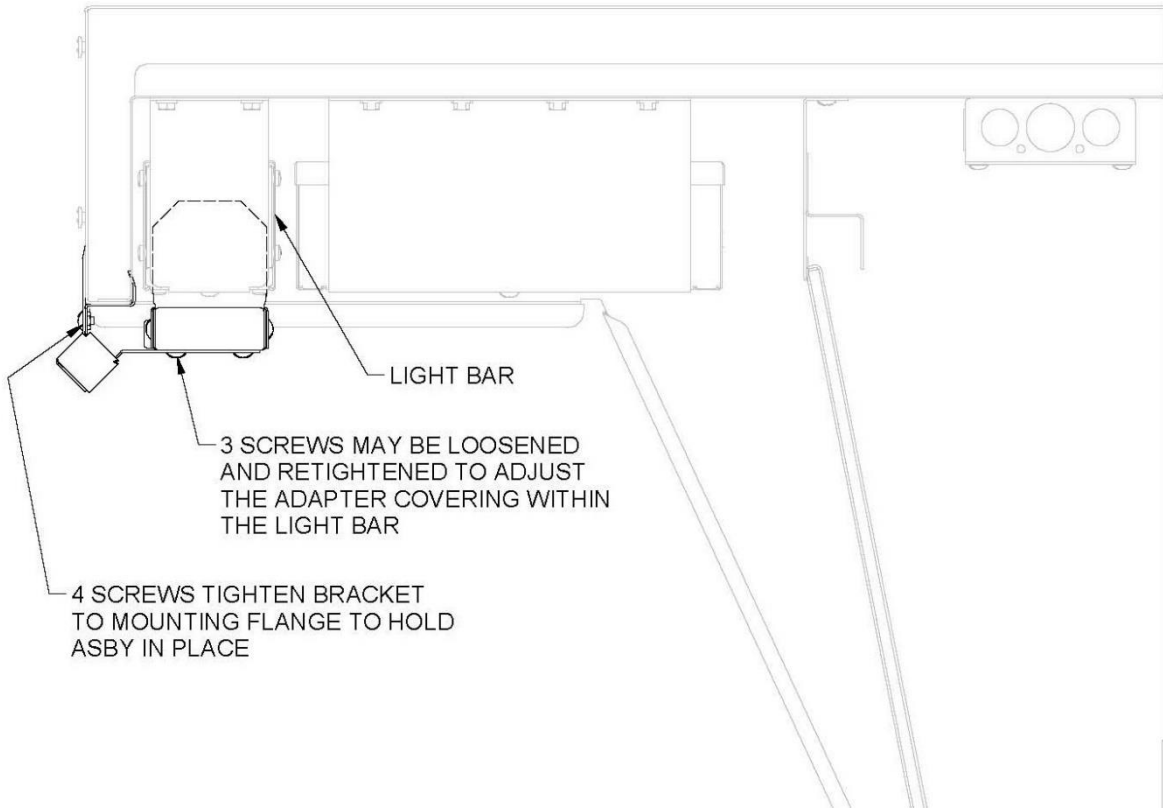


SCREW IN FLANGED ADAPTERS

1. Before screwing the flanged adapters into the light sockets unplug the flanged adapters from the black quick disconnect to avoid stressing the wires.
2. Screw the flanged adapters into the light sockets tight to make good electrical connections.
3. Loosen the 4 screws that hold the mounting flange of the LED Light Kit and the 3 screws that adjust the light adapter covering for the light bar. Be sure not to back the screws all the way out.
4. Hold the LED Light Kit up to the front of the dump station and plug flanged quick disconnect adaptors back into the LED light bar before positioning the kit. Be sure to match up the quick disconnect male clips to the female clips.

OWNER'S MANUAL

MODEL 180150 – LED LIGHT RETROFIT KIT

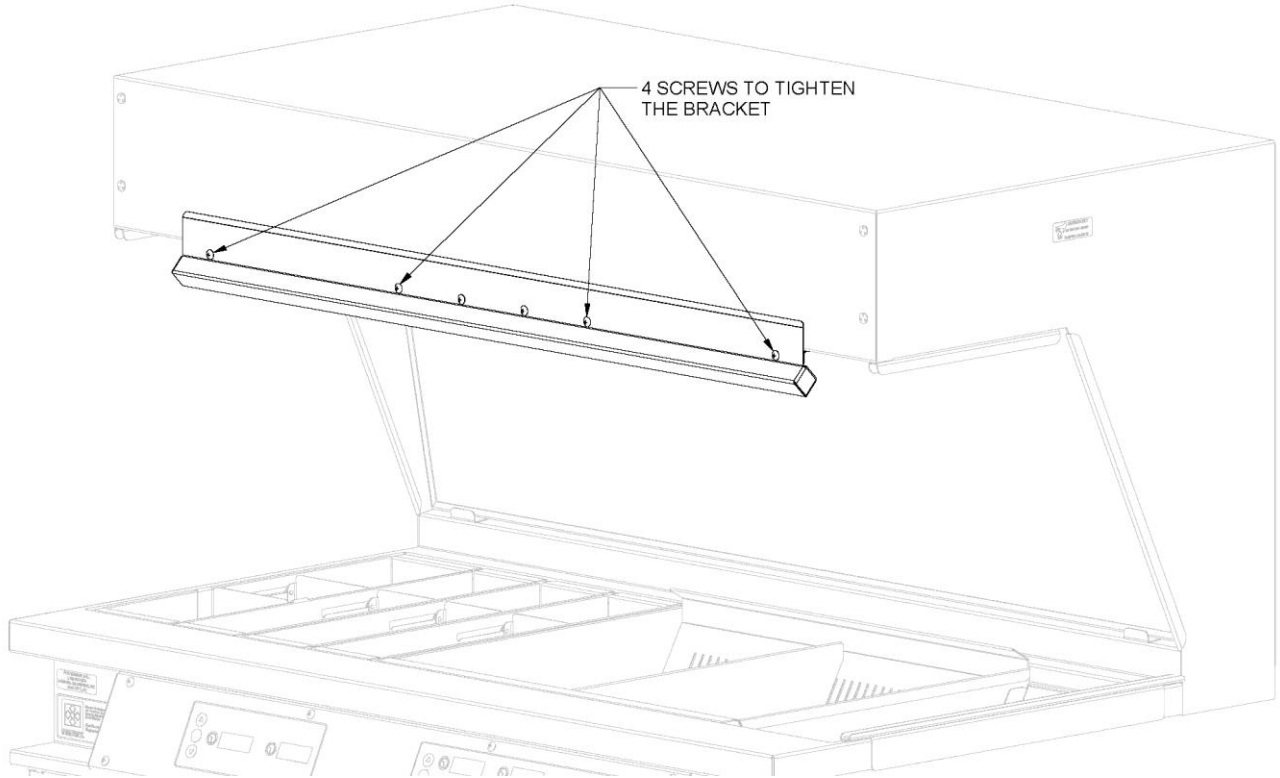


POSITION THE LED LIGHT KIT

1. Place the mounting flange of the LED Light Kit against the front of the dump station as shown.
2. The two flanges on the LED light kit should grip the front lip of the dump station.
3. The flanged adapter covering should fit up into the light bar over the light sockets as shown.
4. Make certain that no wires are protruding from the flanged adapter covering.

OWNER'S MANUAL

MODEL 180150 – LED LIGHT RETROFIT KIT

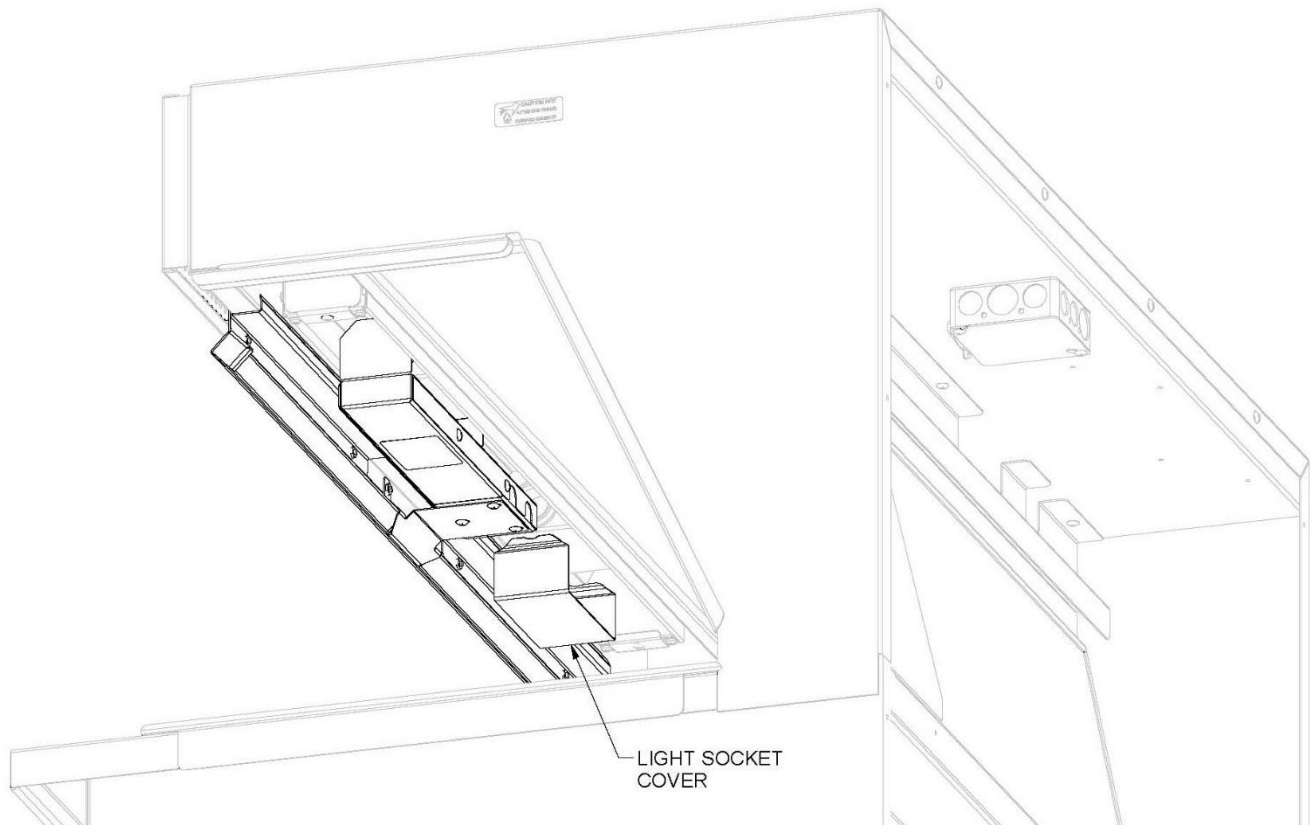


ATTACH THE LED LIGHT KIT

1. Use four screws that are provided with the kit to secure the LED Light Kit in place.
2. Ensure the bottom of the mounting bracket is flush with the bottom of the dump station.

OWNER'S MANUAL

MODEL 180150 – LED LIGHT RETROFIT KIT



ATTACH THE LIGHT SOCKET COVER

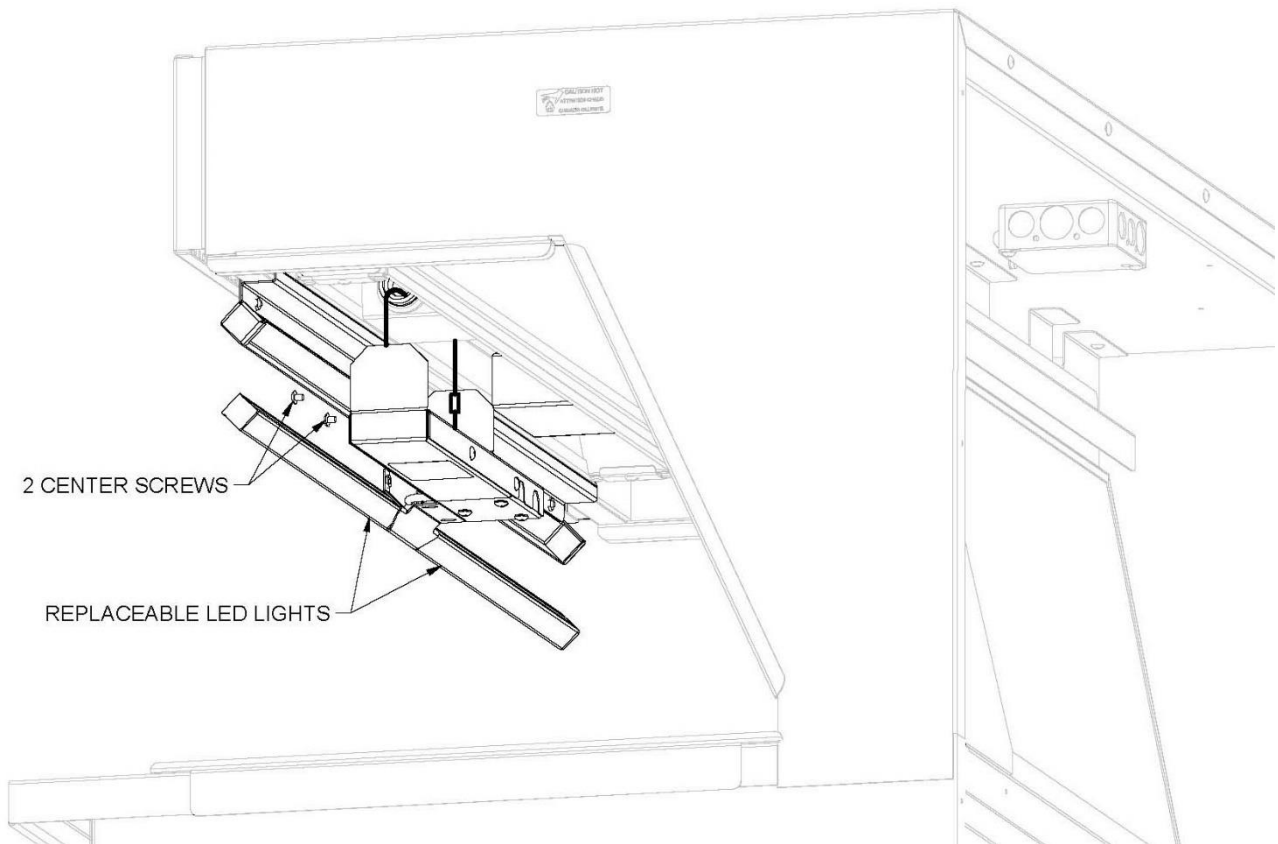
1. The LED Light Kit comes with two Light Socket Covers. Select the Light Socket Cover that fits tightly over the exposed light sockets.
2. Push the Light Socket Cover up into the light bar until it snaps into place completely covering the left side light sockets.
3. Replace the Heat Guard.
4. Plug in dump station and turn power on.

IF THE LED'S DO NOT COME ON

1. Check sockets to make sure they are tightened.
2. Remove sockets and once again check for debris (make sure power cord is unplugged).
3. Check internal cords that plug into LED strips for tightness.

OWNER'S MANUAL

MODEL 180150 – LED LIGHT RETROFIT KIT



REPLACING THE LED LIGHTS

1. The LED Light Kit comes with two replaceable LED Lights.
2. Remove two center screws from the front of the LED Light Kit that hold the Center Bracket as shown.
3. The remainder of the LED Light Kit will then hang by the flanged adapter wires. Unplug the flanged adapters from the black quick disconnectors.
4. Unplug the LED Lights and replace with new LED Lights.
5. Reconnect the black quick disconnectors and replace two screws that hold the Center Bracket as shown.
6. Make certain that no wires are protruding from the flanged adapter covering.

REPLACEMENT PARTS LIST

PART NO.	DESCRIPTION	QUANTITY
504691	Light, LED 18" long	2