

This document contains the installation and operating instructions for:

**MODEL:2424G AUTOBROIL™ (AC2B, AC2J)**

FOR YOUR SAFETY

DO NOT STORE OR USE GASOLINE OR OTHER  
FLAMMABLE VAPORS OR LIQUIDS IN THE VICINITY  
OF THIS OR ANY OTHER APPLIANCE.

**INSTRUCTIONS TO PURCHASER:**

1. ANSI Z83.11 STANDARDS REQUIRE THAT YOU POST IN A PROMINENT LOCATION THE PROCEDURES TO FOLLOW IN THE EVENT THE USER SMELLS GAS. THIS INFORMATION SHALL BE OBTAINED FROM THE LOCAL GAS SUPPLIER.
2. THIS MANUAL NEEDS TO BE RETAINED FOR FUTURE REFERENCE.

**WARNING: IMPROPER INSTALLATION, ADJUSTMENT, ALTERATION, OR MAINTENANCE CAN CAUSE PROPERTY DAMAGE, INJURY OR DEATH. READ THE INSTALLATION, OPERATION AND MAINTENANCE INSTRUCTIONS THOROUGHLY BEFORE INSTALLING OR SERVICING THIS EQUIPMENT.**

# MODEL 2424G

## TABLE OF CONTENTS

	<u>PAGE</u>
I. MACHINE SETTINGS (Quick Reference).....	2
II. MACHINE INSTALLATION.....	3
Pre-Installation .....	3
Appliance Location.....	3-4
Electrical Information .....	4
Gas Piping To Appliance.....	4
Pre-Operation Check.....	5
Lighting and Shut-Off Instructions.....	5
Performance Criteria .....	6
III. OPERATING INSTRUCTIONS .....	7
Broiler and Toaster Adjustment-Daily.....	7
Setting Temperature Controller For Proper High/Low Operation-Weekly .....	8
IV. SCHEDULED MAINTENANCE.....	8
Daily Cleaning Procedures.....	8-9
Monthly Cleaning Procedures.....	10
Quarterly Cleaning Procedures and Preventive Maintenance.....	10-11
V. TROUBLE SHOOTING .....	11-14
VI. ASSEMBLY & DISASSEMBLY INSTRUCTIONS.....	14-15
VII. REPLACEMENT PARTS.....	15-21
BROILER LIMITED WARRANTY.....	i
BROILER WARRANTY PROCEDURES.....	ii

## ILLUSTRATIONS

Overall Dimension.....	Figure 1
Exploded View - Removable Parts.....	Figure 2
Exploded View- Internal Parts .....	Figure 3
Exploded View - Drive System .....	Figure 4
Gas Distribution System .....	Figure 5
Pilot System.....	Figure 6
Conveyor - Axle Scraper.....	Figure 7
Restraining Device.....	Figure 8
Control Panel.....	Figure 9
Burner Construction.....	Figure 10
Hot Surface Pilot Operation.....	Figure 11
Hot Surface Pilot Trouble Shooting .....	Figure 12
Autocat™ Catalytic Converter.....	Figure 13
Autocat™ Catalytic Converter for LP Gas .....	Figure 14
Lower Burner Support Assembly.....	Figure 15
Conveyor Drive Shaft Assembly #132659.....	Figure 16
Kit, 9.5" Arm Extension Assembly.....	Figure 17
Platen Assembly Left #124655.....	Figure 18
Platen Assembly Right #124656.....	Figure 19
Conveyor Drive Shaft Assembly #124584.....	Figure 20
Toaster Loading Arm Assembly.....	Figure 21
Wiring Schematic..... (208V, 1PH, 60Hz, 19 amps) Drawing #121664 (AC2B, AC2J)	
Wiring Schematic..... (220V-240V, 1PH, 50Hz, 22 amps) Drawing #122597 (AC2BINTL)	
Wiring Schematic..... (220V-240V, 1PH, 50Hz, 22 amps) Drawing #133551 (AC2B)	

**I. MACHINE SETTINGS**

**AUTOBROIL™**

**MODEL: 2424G**

SERIAL NUMBER: \_\_\_\_\_

TYPE OF GAS: \_\_\_\_\_

ELECTRICAL SUPPLY: \_\_\_\_\_

BROILER HIGH/LOW TEMPERATURE SETTING: \_\_\_\_\_

GAS PRESSURE: HIGH \_\_\_\_\_ LOW \_\_\_\_\_

BROILER SPEED SELECTOR SETTING: \_\_\_\_\_

TOASTER TEMPERATURE SETTING: \_\_\_\_\_

START-UP TECHNICIAN: \_\_\_\_\_

START-UP DATE: \_\_\_\_\_

COMMENTS: \_\_\_\_\_  
\_\_\_\_\_  
\_\_\_\_\_  
\_\_\_\_\_

## II. MACHINE INSTALLATION

### PRE-INSTALLATION

1. After uncrating the Autobroil™ unit, inspect for shipping damage. Check that all control knobs are intact on the electrical cabinet front. Contact the factory if there are obvious problems. Set the unit in place and leave the plastic wrapping on to protect it from the debris and trash of building construction. DO NOT remove plug from gas inlet pipe. Leave this for the Qualified Service Company. Check that machine has not been dented or damaged by the carrier. Notify your freight carrier immediately to file a concealed damage claim, following the instructions attached to the outside of the shipping crate. Your warranty will not cover freight damage.
2. Installation must be performed by a Qualified Service Company. The term "Qualified Service Company" means any individual, firm, corporation or company which is either engaged in and is responsible for the installation or replacement of gas piping on the outlet side of the meter, or the service regulator when a meter is not provided, or the connection, installation or repair of gas appliances, who is experienced in such work, familiar with all precautions required, and has complied with all the requirements of the authority having jurisdiction.
3. A remote gas shut-off valve must be provided and interlocked to the exhaust fire protection system.  

A gas shut-off control is located on the top of the gas safety valve (behind the right side panel) for emergency shut-off of gas supply to this appliance.
4. Because this unit is power fan exhausted, it is necessary to provide adequate make up air equal to the amount removed. In addition to this, any other exhausts, flues, or air removal systems must be taken into consideration. Examples of this are heat removal fans or hot water heater flues.
5. The appliance and its individual shutoff valve must be disconnected from the gas supply piping system during any pressure testing of that system at test pressures in excess of 1/2 psig (3.45 kPa).
6. The appliance must be isolated from the gas supply piping system by closing its individual shutoff valve during any pressure testing of the gas supply piping system at test pressures equal to or less than 1/2 psig (3.45 kPa).

### APPLIANCE LOCATION

**WARNING: IF NOT INSTALLED, OPERATED AND MAINTAINED IN ACCORDANCE WITH THE MANUFACTURER'S INSTRUCTIONS, THIS PRODUCT COULD EXPOSE YOU TO SUBSTANCES IN FUEL OR FROM FUEL COMBUSTION WHICH CAN CAUSE DEATH OR SERIOUS ILLNESS AND WHICH ARE KNOWN TO THE STATE OF CALIFORNIA TO CAUSE CANCER, BIRTH DEFECTS OR OTHER REPRODUCTIVE HARM.**

1. Position Autobroil™ to properly align with exhaust hood (refer to equipment plan).
2. The hood/ventilator for the appliance should be located in accordance with the National Fire Protection Association Standard #96, "Removal of Smoke and Grease-Laden Vapors from Commercial Cooking Equipment" and any local applicable requirements.

3. For proper installation, the minimum clearance from combustible construction is 0" from sides and 18" from food loading end and food delivery end.
4. Adequate clearance should be maintained to allow easy access to loading and unloading areas of the machine.
5. For servicing, unit must be moved two feet clear from all construction.

**CAUTION: KEEP THE APPLIANCE AREA FREE AND CLEAR FROM COMBUSTIBLES.**

#### **ELECTRICAL INFORMATION**

1. The domestic appliance is furnished with a cord only — no plug; and requires a 208 volt, A.C., 60 HZ, Single Phase, 4 wire (including ground), 30 AMP circuit. Appliance must be electrically grounded in accordance with local codes, or in the absence of local codes, with the National Electrical code ANSI/NFPA No. 70-latest edition.
2. The international appliance requires 220 volt or 240 volt, A.C., 50 Hz, Single Phase and is furnished with a cord only— no plug.
3. There is a Wiring Diagram located in the Owner's Manual and under the right side skin.

#### **GAS PIPING TO APPLIANCE**

1. Installation of this appliance must conform with local codes, or in the absence of local codes, with the National Fuel Gas Code, ANSI Z-223.1 -latest edition.
2. In Canada, this appliance is to be installed in accordance with Standard CGA B149.1 or B149.2 Installation Codes for gas burning appliances and equipment and any local applicable requirements.
3. The appliance is supplied with a 3/4" female pipe thread. The installer must make the pipe connection to the unit in accordance with the "National Fuel Gas Code," ANSI Z-223.1-latest edition. The gas line connected to the 3/4" female pipe thread cannot be less than a 3/4" pipe. The gas pressure and gas volume required by this appliance is shown on Page 7. Gas piping from source to broiler must be adequate to satisfy these requirements when all other gas appliances in the restaurant are operating at maximum demand.
4. A flexible AGA approved gas line is available. Instructions are (1) the installation shall be made with a connector that complies with the Standard for Connectors for Movable Gas Appliances, ANSI Z21.699-latest edition, and Addenda, Z21.69a-latest edition, and a quick-disconnect device that complies with the Standard for Quick-Disconnect Devices for Use With Gas Fuel, ANSI Z21.41-latest edition, and Addenda, Z21.41a-latest edition and Z21.41b-latest edition, and (2) adequate means must be provided to limit the movement of the appliance without depending on the connector and the quick-disconnect device or its associated piping to limit the appliance movement. See Figure 8 for details.
5. See Page 3, Items 5 and 6, for instructions on gas supply line pressure testing.

**CAUTION: DO NOT OBSTRUCT THE FLOW OF COMBUSTION AND VENTILATION AIR.**

## **PRE-OPERATION CHECK**

Before lighting and operating your Autobroil™, make a quick check of critical items as follows:

1. Remove both side panels and check to see that all parts are in place and that none are damaged. Particularly make sure all burners are in place and that the shields are in position on the bottom burners.
2. Start conveyor chains and check for proper operation. The conveyor chains should run free and not be catching on anything.
3. The speed of the conveyor chains should be modulated from low to high, and back again without the chain stopping.
4. Before first use, and after any special cleaning, it is necessary to "season" the broiler chain. This is done by bringing the broiler to operating temperature and then (with burners still lit) applying liquid shortening from a saturated cloth over the full width of the broiler chain while the chain makes 5 or 6 complete revolutions.
5. Check that gas pressure at appliance is correct (see Performance Criteria on Page 7).
6. Check that broiler grease tray is in place under burners (Figure 2).

## **LIGHTING INSTRUCTIONS FOR ELECTRONIC IGNITION SYSTEM**

1. Turn exhaust system on. (Some hoods are so powerful that the broiler must be lit before the exhaust is turned on).
2. Make sure filters are in place in the hood.
3. Turn conveyor chain on and set speed at approximate mid-point.
4. Remove right side cover. (Same Side As Controls)
5. Turn gas control switch on top of Honeywell gas safety valve to "ON".
6. Turn on the broiler heat switch on the control panel and verify all burners have ignited. Ignition is electronic (does not require manual lighting of pilot). Set broiler temperature controller on right side of the broiler (behind the side panel) to 400°F (204°C) (see Item 3 of setting temperature controller on Page 9).
7. If pilot flame or burners fail to light turn heat switch off and wait five minutes before attempting to relight.

## **SHUT-OFF INSTRUCTIONS**

1. Turn heat switch off.
2. Wait 30 minutes.
3. Turn conveyor switch off.
4. Turn exhaust system off.

## PERFORMANCE CRITERIA

1. The manifold pressure for each burner and appliance inlet pressure and gas amount is listed below:

<b>TYPE OF GAS</b>	- Natural or Propane
<b>PRESSURE AT THE APPLIANCE</b>	- 6.0-10.0 IWC for Natural  - 11.0-14.0 IWC for Propane
<b>MANIFOLD PRESSURE</b>	- Low 4.0 IWC; High 5.0 IWC for Natural  - Low 8.0 IWC; High 10.0 IWC for Propane  - Low 9.0 IWC; High 10.0 IWC for Propane ( <b>LP Catalyst Only</b> )
<b>TOTAL GAS AMOUNT</b>	** - 97,000 BTUH @ 100% High Fire

Manifold pressure is measured by a pressure gauge on the outlet side of the Honeywell gas valve. With the unit on for at least twenty minutes and the broiler temperature controller set at 400°F (204EC) (see Item 3 on Page 9), the pressure should be at 4.0 IWC (8.0 IWC for propane), (9.0 IWC for LP Catalyst). With the broiler temperature controller set for 800°F (427°C) the high fire pressure is 5.0 IWC (10.0 IWC for propane). High pressure is adjusted using the regulator in the top of the Honeywell gas safety valve. Low fire is adjusted using the gas pressure regulator. See Figure 5 for gas system layout.

2. The burners in the appliance are a special infrared type. All of the air for combustion must be injected through the Venturis. This makes orifice design and alignment very critical. The orifice design, in combination with the correct natural or propane gas pressure will result in adequate air aspiration and mixing. There are no air shutters. No air adjustment is needed. The proper orifice part numbers are found in Section VII - Replacement Parts.

**CAUTION: DO NOT STACK BOXES OR IN ANY WAY BLOCK AREA IN IMMEDIATE VICINITY OF VENTURIS OR IN ANY OTHER WAY OBSTRUCT FLOW OF COMBUSTION AIR.**

2. Ignitor - sensor - pilot burner flame is adjustable with a small screwdriver. The cap screw behind the 1/4" gas line exiting the valve should be removed. See Figure 5. The small adjusting screw is under the cap screw. Turning the small adjusting screw inward (clockwise) will reduce the flame to the pilot. The pilot flame should be uniform and just large enough to make a flame envelope around the end of the sensor and ignitor.
3. All burners will be bright orange when burning properly. If a dull red is observed after 30 minutes of warm-up with a blue flame above the burner face, the orifice may be dirty or damaged. "Popping," or burning back at the orifice of the burner, is a result of the burner screen being loose or a faulty gasket under the burner screen. LP machines may exhibit a light "popping" sound when the unit is turned off; this is normal.

**NOTE: IF BURNER SCREEN IS TORN OR HAS A HOLE, OR IF A GASKET IS LEAKING, THE BURNER MUST BE REPAIRED.** See Figure 10.

### III. OPERATING INSTRUCTIONS

#### BROILER AND TOASTER ADJUSTMENT - DAILY

#### LIGHTING INSTRUCTIONS FOR ELECTRONIC IGNITION SYSTEM

1. Turn exhaust system on. (Some hoods are so powerful that the broiler must be lit before the exhaust is turned on.)
2. Make sure filters are in place in the hood.
3. Turn conveyor chain on and set speed at approximate mid-point.
4. Remove left side cover.
5. Turn gas control switch on top of Honeywell gas safety valve to "ON".
6. Turn on the broiler heat switch on the control panel and verify all of the burners have ignited. Ignition is electronic. Set broiler temperature controller on right side of control cabinet to 400EF (204EC) (see Item 3 of setting temperature controller on Page 9).
7. If pilot flame or burners fail to light turn heat switch off and wait five minutes before attempting to relight.

#### SHUT-OFF INSTRUCTIONS

1. Turn heat switch off.
2. Wait 30 minutes.
3. Turn conveyor switch off.
4. Turn exhaust system off.

#### TOASTER OPERATING INSTRUCTIONS

1. Turn the toaster temperature thermostat on the front of the control cabinet to between 425°F (218°C) and 450°F (232°C).
2. Adjust the bun platens in height over the conveyor so the platen touches the bun as it is transported under the platen. This produces a caramelized surface. If the platen is adjusted too low, the bun will be crushed.

#### TOASTER SHUT-OFF INSTRUCTIONS

1. Turn toaster thermostat to "OFF" position. (This can be done as soon as toaster buns are no longer needed.)

**PROLONGED POWER FAILURE: NO ATTEMPT SHOULD BE MADE TO OPERATE THE APPLIANCE DURING POWER FAILURE.**

## **SETTING TEMPERATURE CONTROLLER FOR PROPER HIGH/LOW OPERATION - WEEKLY (This Control Is Located Under The Right Broiler Side Cover)**

1. Follow the procedure in Step 3 below in order to set temperature control for 400EF (204EC). After doing this, turn on the burners.
2. Allow the broiler burners and conveyor chain to warm up for 60 minutes (with the chain at approximately the correct speed).
3. Observe the temperature displayed: push "SET" and release to view the "SET POINT." To change set point push "SET" and, within three (3) seconds, use the arrows to select a new set point. When setting the High/Low for proper operation, make the set point THE SAME as the observed temperature made after the sixty (60) minute warming. Broiler High/Low control is now set. The setting should be approximately 700°F (371 °C). If not at least 650°F (343°C), the high and low gas pressures, as discussed on Page 7 under Performance Criteria, may require adjustment or the hood exhaust may be excessive. The broiler will work but will cook slower.
4. The temperature displayed by the control at all times is the ACTUAL temperature, except for a few seconds after depressing SET.
5. Place one meat patty on the broiler chain. Based on the appearance of the broiled patty, reset the Digital Speed Control for the desired broiling quality. (Note: this single patty should be cooked to the maximum degree of the Minimum/Maximum doneness tolerance.)

**NOTE: THE NUMBERS DISPLAYED BY THE SPEED CONTROL ARE RELATIVE TO ONE ANOTHER. THE LARGER THE NUMBER, THE FASTER THE CONVEYOR.**

## **IV. SCHEDULED MAINTENANCE**

### **DAILY CLEANING PROCEDURES**

**CAUTION:** Do not touch the broiler section immediately after appliance shut-down. The temperature inside enclosures is in excess of 500°F (260°C), which eliminates the need to clean any parts inside the enclosures for sanitary purposes. Any grease that may build up on the exterior of the enclosures should be cleaned off with a damp cloth and a minimum amount of detergent. **Never use a large amount of water on the enclosure or allow burner faces to get wet as this could cause premature burner or gasket failure. Disconnect the power supply to the appliance before cleaning or servicing.**

**CAUTION:** Under no circumstances should oven cleaner be used on this appliance. IT WILL EAT HOLES IN THE ALUMINUM GAS VALVES AND GAS LINES, CAUSTIC FUMES CAUSE ELECTRICAL COMPONENT DAMAGE, AND WILL CAUSE MANY OTHER PROBLEMS IF USED TO CLEAN THIS BROILER.

**CAUTION: KEEP THE APPLIANCE AREA FREE AND CLEAR FROM COMBUSTIBLES.**

1. Allow broiler burners and chain to operate for 30 minutes after cooking last patty to burn off excess grease on broiler components. Then turn the unit off and allow to cool. (This applies every time a meat chain is turned off — regardless of what time of day meat chain is shut down - and regardless of how few patties were broiled in the last 30 minutes, last hour, etc.) This will clean some parts of the cooking chamber. Failure to perform this procedure daily will result in poor cooking times.

2. Remove all exterior panels except those which are attached with screws. Be careful not to touch any hot internal broiler components.
3. Remove burners from left side of unit and shake all debris off burners after they cool. Both top and bottom burners may be slid out through the side of the machine. **DO NOT WASH BURNER AS IT WILL DESTROY GASKET.** Brush surface of burner mesh with soft brush.
4. Remove lower burners and shields. Brush or scrape residue off shield.

**WARNING: THE BURNER AND REVERBERATING SCREENS (LOCATED UNDER THE TOP BURNERS), ARE MADE FROM INCONEL METAL MESH. THIS MATERIAL DETERIORATES WITH USE. INSPECT THESE SCREENS DAILY AND REPLACE IF SCREEN IS SEVERELY CORRODED. FAILURE TO DO SO CAN RESULT IN METAL PARTICLES BEING SERVED TO YOUR CUSTOMERS.**

5. Remove the following items and wash with hot soapy water.

	Tunnel Guard Front & Rear	Figure 2
	Tunnel Closure	Figure 2
	Tunnel Fillers (2 each)	Figure 2
	Drip Tray (Broiler Arm)	Figure 2
	Lower Discharge Tent	Figure 3
*	Toaster Exit Ramp	Figure 2
*	Broiler Grease Tray	Figure 2
*	Toaster Arm Cover	Figure 2
*	Crumb Tray (Toaster Section)	Figure 2
	Meat Stripper	Figure 3
*	Grease Drain Channel	Figure 3
*	Catch Pan & Insert	Figure 2
*	Grease Pan	Figure 2
* NOTE: these items may be removed during the 30 minute period.		

6. With the conveyor switch ON and heat switch **OFF**, wire brush the broiler conveyor and, as it cools, wipe with damp cloth.
7. Scrape deposits from the axles with the axle scraping tool, furnished with each machine as shown in Figure **\*THIS IS IMPORTANT TO PREVENT GREASE FIRES AT REAR OF THE BROILER.**

8. To Clean Toaster: Run a damp cloth down the conveyor (folded to the thickness of a bun) at least three times a day and just before shutting down the unit for the night. Don't scrub the Teflon sheet with any coarse materials.
9. Remove grease and meat residue from any part of remaining broiler structure where visible. Use a damp cloth with detergent and a putty knife for best results.
10. After cleaning all removable parts as noted, allow to dry and reassemble.

## MONTHLY CLEANING PROCEDURES

1. Turn off gas knob on top of the safety valve and disconnect electricity.
2. Remove upper burners, reverberating screens, lower burners, and shields to check for wear. These parts are illustrated in Figure 3.
3. If the conveyor chain has been removed, make certain it is not on backward and **CLOSE** open links to match other links. (Figure 7)
4. Using a damp cloth, wipe the inside of each burner venturi.
5. Reinstall burner screens, lower burner shields, and burners.
6. On LP Broilers with catalyst, install the (2) burner flame deflectors. (Figure 14)
7. Remove spark guard and wipe out. (Figure 2)
8. **PROCEDURE FOR CLEANING OPTIONAL MARSHALL CHARBROILER CATALYSTS:**

Marshall recommends that the restaurant soak the catalyst in a solution of commercial degreaser and warm water for twenty minutes once a month. It is important to note that the catalyst may flake off the metal honeycomb substrate if it is impacted by a high-pressure water stream. Therefore, we recommend that the restaurant personnel first prepare the degreaser-and-water bath, and then place the catalyst in the bath. We want to emphasize that the cleaning procedure involves a soak, rather than a scrubbing or hosing procedure. After soaking for twenty minutes, rinse the catalyst either by soaking again in cold water or by rinsing in a gentle stream of cold water. Following the rinse, shake the catalyst to remove all excess water, and allow to dry at room temperature before returning it to service. A large fan may be used to move room air more quickly over the catalyst to expedite the drying step. When installing catalyst on LP Broilers, be sure broiler top extension is in place.

## QUARTERLY CLEANING PROCEDURES & PREVENTIVE MAINTENANCE

1. If required, remove conveyor and soak in hot soapy water overnight. The chain is removed by lifting axle up to produce slack and separating as described in Figure 7. When replacing chain, make certain the conveyor is installed properly. **PLACING CHAIN ON BACKWARD WILL CAUSE SEVERE BINDING PROBLEMS. CLOSE** open links to match other links. (Figure 7)
2. If required, spread conveyor links open with screwdriver or chain pliers (part #500033). Lift front axle up to make slack in the conveyor belt, unhook conveyor chain and remove to gain access to lower cooking chamber for cleaning side walls. Make reference to the orientation of the conveyor links and the conveyor direction for reassembly. (Figure 7)
3. Lubricate the roller (drive) chain with a few drops of any grade motor or machine oil.

4. Remove and inspect all motor brushes and replace if less than 1/4" is left.
5. Do not remove internal gas lines for cleaning.
6. Clean gas orifices:
  - Orifices are passageways directing gas flow into burner. Uneven gas flow or air to gas ratio is caused by dirty or damaged orifices.
  - Orifices are made of brass. Use special care in cleaning-don't gouge or make gas holes bigger.
  - To reach orifices, remove burners.
  - Use a pipe cleaner dipped in rubbing alcohol to clean orifices. Swab until clean; free of carbon build-up. Do not use drill bit; this will damage the orifices.
7. Blow out all six (6) burners through the venturi opening with a low pressure air source.  
**CAUTION: Do not drop burners or get wet as this may break gasket or add to premature burner failure.**
8. **INVENTORY THE SPARE PARTS KIT AND ORDER MISSING PARTS AS NEEDED. KEEP A COMPLETE SET OF PARTS ON HAND AT ALL TIMES.**

## V. TROUBLESHOOTING

**This section contains a list of possible problems with the Autobroil™ unit. ALL ELECTRICAL TROUBLE SHOOTING INVOLVING ACCESS INTO THE MOTORS OR ELECTRICAL ENCLOSURES MUST BE PERFORMED BY A QUALIFIED ELECTRICIAN. All items marked with asterisks (\*) should be performed by service agency qualified to perform service on gas fired appliances.**

1. **PROBLEM: BURNER BACKFIRES.** Flashback, blue flame at entrance to burner makes motor-boating sound like a blowtorch. **IMPORTANT:** If burner backfires, turn it off. Continued operation will cause damage to the entire burner.

POSSIBLE CAUSE:

- \* A) Burner screen failure (hole) or burner gasket. **SOLUTION:** Replace burner screen or gasket.
- \* B) Burner over-fired - manifold pressure too high. **SOLUTION:** Check and reset gas control regulator to give rating plate value for manifold pressure (shown under Performance Criteria on Page 7). Wait 5 minutes & relight. Flashback will not occur immediately unless a large opening in or around the burner screen is evident. Wait an hour after relighting to check that problem is solved. Figure 5 illustrates which regulator sets high and low gas pressures.
- \* C) Check to ensure all screws holding the burner screen in place are snug. See Figure 10.

2. **PROBLEM: FLAMES VISIBLE AT EXHAUST STACK OR IN CHAMBER.**

POSSIBLE CAUSE:

- \* A) Low gas pressure. **SOLUTION:** Check and reset gas control regulator to give rating value for manifold pressure (shown under Performance Criteria on Page 7). Figure 5 illustrates which regulator sets high and low pressures.

**3. PROBLEM: PILOT FLAME GOES OUT (STUDY FIGURE 11 & 12 FOR PILOT OPERATION).**

POSSIBLE CAUSE:

- \* A) Pilot assembly dirty or bent. **SOLUTION:** Check for bent pilot gas line and/or dislodge debris
- \* B) Low gas pressure. **SOLUTION:** Increase gas pressure to appliance (see Figure 5).
- \* C) Pilot orifice clogged. **SOLUTION:** Dislodge debris or replace orifice.
- \* D) Wires from pilot assembly loose. **SOLUTION:** Trace wires to where they plug into gas valve and check connection. (Figure 6)

\* **INSTRUCTIONS MARKED WITH ASTERISKS SHOULD BE PERFORMED BY AUTHORIZED SERVICE PERSONNEL.**

**4. PROBLEM: BURNER WILL NOT LIGHT AT ALL.**

POSSIBLE CAUSE:

- A) **Hot Surface Ignition. SOLUTION:** Recycle heat switch. See Figure 11 and 12.
- B) Orifice. **SOLUTION:** Check that orifice is not plugged. (If it is necessary to change the orifices, new ones must be ordered from the factory).
- C) Check that flame runner is fully lit (Figure 6). **SOLUTION:** If not, clean flame runner orifice or remove and clean flame runner.
- D) Pilot. **SOLUTION:** Pilot must light and stay lit in order for burner to light. Check pilot problem list (see Item 3 on Page 13).
- \* E) **Gas Solenoid. SOLUTION:** Check that solenoid valve on main gas valve is working.
- F) Pilot Solenoid. **SOLUTION:** Check that solenoid valve #501698 on Figure 5 is functioning. It opens for 120 seconds during the ignition cycle and then closes with a delay-on-break timer in the control cabinet.
- G) Pilot Jumpers. **SOLUTION:** Check the short and long pilots shown at the top of Figure 6 to make certain they are not plugged. They turn off after 120 seconds from activating heat switch.

**5. PROBLEM: CONVEYOR CHAIN WILL NOT MOVE.**

POSSIBLE CAUSE:

- \* A) Check for object caught in conveyor, causing a jam. **SOLUTION:** Remove object.
- \* B) Check 1.5 amp fuse on top of the control cabinet (Figure 6) **SOLUTION:** Replace if blown and recycle ON/OFF switch.
- \* C) Check 10 amp fuse. **SOLUTION:** Replace if blown.
- \* D) Check to see if motor shaft is moving. **SOLUTION:** Sprocket needs to be tightened.
- \* E) Check switch to make sure power is flowing through it. **SOLUTION:** Replace switch.

- \* F) Connect motor control leads to an operating motor speed control board. **SOLUTION:** If motor runs, replace motor control board. If motor still does not run, replace motor.

#### 6. **PROBLEM: CONVEYOR RUNS BUT SPEED IS CONSTANT**

##### POSSIBLE CAUSE:

- \* A) There are four parts to the motor system. They are the motor, the circuit board, the digital speed control and the fuse mounted on the top of the control cabinet. The most likely problem would be a blown fuse. **SOLUTION:** Using spare parts, replace one part at a time until the trouble spot is identified.

- \* **INSTRUCTIONS MARKED WITH ASTERISKS SHOULD BE PERFORMED BY AUTHORIZED SERVICE PERSONNEL.**

#### 7. **PROBLEM: REPEATED MECHANICAL BINDING.**

##### POSSIBLE CAUSE:

- A) Check to see that chain is not on backward. **SOLUTION:** See proper chain installation on Figure 7.
- B) Inspect chain closely for bent or warped links that may be snagging and causing a binding condition. Also check that the chain links are not climbing out of the sprockets as the conveyor rotates. **SOLUTION:** Straighten or replace bad links.
- C) Make sure the axle assembly is clean and free of grease and food residue to allow smooth movement of the conveyor. **SOLUTION:** Clean axle. See Figure 7.
- D) Check the axle assembly to make certain all set collars, bearings, etc. are properly positioned and secure.
- E) Disassemble conveyor axle assembly and check condition of bushings and bearings for excessive wear. **SOLUTION:** Replace if worn or damaged.
- F) Visually inspect the motor drive chain assembly for smooth rotation of chain. **SOLUTION:** Make certain there are no binding or worn components.
- G) Make sure conveyor is not catching on meat stripper. **SOLUTION:** Straighten bent stripper.

#### 8. **PROBLEM: HIGH/LOW CONTROL DOES NOT WORK.**

##### POSSIBLE CAUSE:

- \* A) Determine gas pressure by checking gas pressure gauge. **SOLUTION:** Adjust per instructions on Page 7.
- B) If unit stays in high or low, check that control is properly set for about 700°F (371 °C). **SOLUTION:** Reset to proper temperature as shown in Item 3 on Page 9.
- B) If control flashes "EEE" or "999", then inspect thermocouple for continuity. **SOLUTION:** Check to be sure thermocouple leads are securely fastened to temperature controller. If so, then replace thermocouple.

\* **INSTRUCTIONS MARKED WITH ASTERISKS SHOULD BE PERFORMED BY AUTHORIZED SERVICE PERSONNEL.**

**9. PROBLEM: HAMBURGERS WILL NOT FALL CORRECTLY.**

POSSIBLE CAUSE:

A) Meat stripper is dirty or adjusted too far from conveyor. **SOLUTION:** Clean and reposition near chain by moving brackets that hold stripper. See illustration on Figure 3.

**10. BUNS WILL NOT GET HOT ENOUGH.**

POSSIBLE CAUSE:

A) Check that toaster touches bun. **SOLUTION:** Lower platens to correct height to compress buns properly for toasting.

B) Check toaster electrical power. **SOLUTION:** Turn thermostat ON.

C) Check speed to make sure conveyor is not running too fast. **SOLUTION:** Speed should be about 50 to 60 seconds.

\* D) Check element connections on top of platens. **SOLUTION:** Tighten

E) Using a surface thermometer on top of platen, check that thermostat is functioning. **SOLUTION:** Replace thermostat as appropriate.

F) Check bulb on the end of the thermostat capillary tube to make sure it is inserted into side of platen. **SOLUTION:** Remove control cabinet lid and push bulb into position.

G) Inspect the thermostat capillary tube for breaks or kinks. **SOLUTION:** Replace the thermostat.

**11. BUNS WILL NOT FEED CORRECTLY.**

POSSIBLE CAUSE:

A) Check for buildup of black residue on teflon sheet caused by improper cleaning. **SOLUTION:** See cleaning instructions under Daily Cleaning Procedure.

B) Teflon sheet is worn or damaged. **SOLUTION:** SHEET MUST BE REPLACED.

\*\* **INSTRUCTIONS MARKED WITH ASTERISKS SHOULD BE PERFORMED BY A QUALIFIED SERVICE COMPANY.**

## **VI. ASSEMBLY & DISASSEMBLY INSTRUCTIONS**

1. The burner screen (Figure 10) may be replaced by removing all the screws from the burner housing and frame. The assembly will then lift off. Remove all old gasketing and replace. Compress the new assembly into the burner housing with hand pressure all around the outside of the burner housing. Insert new screws and snug the screws in a staggered sequence. Do not over tighten screws. These screws will keep the frame tight against the gasket.

2. The restraining device is a separate line and should be anchored no less than 6" away from the gas connector and in a parallel position to the flexible line. The following instructions refer to Figure 8. By using the adjusting clips (1) alter the length of the cable (2) so that the overall length (3) is 3" to 6" shorter than the length of the flexible gas line including the fitting. Then attach staple (4) to an existing wall or other structurally sound surface. Attach scissor hook (5) to staple and secure with cotter pin. Finally attach spring hook (6) to gas appliance as shown in Figure 8. Make certain that the overall length of the restraining line is shorter than the gas line so no strain is placed on the gas line or piping when moving the unit.
3. When replacing the thermocouple which attaches to the hi/low temperature controller, make certain it is inserted through side wall of machine into cooking chamber exactly one inch (1").
4. To remove and clean lower burner shields - remove left side skin and lower burner end cover (Figure 3), slide burners out thru opening and lift off shields from burner pins. Scrape and wire brush shields.
5. To properly set the clearance between the meat stripper and the conveyor chain, the machine must be HOT. Loosen the bolts holding the brackets to the sides of the unit and adjust their position until the top edge of the stripper is within 1/16" of the hot conveyor. See Figure 3.

**WARNING: THIS APPLIANCE IS NOT CAPABLE OF BEING SAFELY PLACED INTO OPERATION DURING A POWER FAILURE AND NO ATTEMPT TO OPERATE IT SHOULD BE MADE.**

## VII. REPLACEMENT PARTS - 2424G

When ordering parts, make sure to specify the machine model number, type of gas and serial number as shown by the label attached to the right side cover.

PART#	DESCRIPTION	FIGURE
100367	Scraper Axle	7
101357	Bearing, Teflon .750"	4
109285	Mount Teflon Cloth	4
110042	Fan	6,Schematic
115665	Burner, 24"	10
115816	Top Burner End Cover	3
115847	Toaster Idler Assembly	3
115856	Screen Mounting Clip	3
115857	Reverberating Screen	3
116084	Conveyor Support Tube	3

116088	Conveyor Shaft (Toaster Idler)	3
116126	Thermocouple Fitting	4
117213	Lower Burner End Cover	3
117234	Motor Mounting Plate	4
117244	Meat Stripper	3
117300	Kit, Conveyor Arms (Short Arms Only)	4
118041	Grease Drain Channel	3
118401	Broiler Grease Tray	2
118402	Catch Pan Insert (AC2B)	2
118425	Spark Guard	2
118426	Motor Sprocket Guard	4
118499	Catch Pan	2
118529	Conveyor Arm Support	3
118532	Tunnel Closure	2
118537	Venturi Manifold Assembly	5
118538	Distribution Manifold Assembly	5
118548	Drip Tray (Broiler Arms)	2
118701	Front Tunnel Guard (AC2B) '	2
118702	Rear Tunnel Guard (AC2B)	2
118703	Crumb Tray (Toaster)	2
118709	Burner Shield	3
118930	Temperature Control (High/Low Gas)	Schematic
119521	Lighter Arm Assembly	6
122268	Spare Parts Kit (AC2B, AC2J)	N/A
119530	Meat Stripper Hanger (Right)	3
119531	Meat Stripper Hanger (Left)	3
119538	Tunnel Filler	2
119539	Lower Discharge Tent	3
120029	Support Pin	4

120030	Conveyor Idler Shaft (Short Arms)	3
120048	Wiper Blade	3
120113	Guard, Front Tunnel (AC2J)	2
120114	Guard, Rear Tunnel (AC2J)	2
120811	Toaster Ramp (AC2B)	2
121658	Toaster Arm Cover (LH)	2
121696	Conveyor Wiper Assembly	3
122551	Broiler Idler	3
122559	Owner's Manual	N/A
123145	Gasket, Burner	10
123832	Heat Guard	2
123844	Drive Axle (Toaster)	4
123865	Burner Track, Open End	3
123866	Burner Track, Stop End	3
123867	Burner Track, Rails	3
123879	Catch Pan	2
124578	Broiler .500" Bearing As by (Short Arms)	3
124580	Sprocket Idler Asby	4
124584	Conveyor Drive Shaft Assembly	20
124596	Burner Track Rail (Short)	3
124630	Burner Screen Kit	10
124643	Sprocket #3512 x .750" (AC2J)	4
124651	Burner Screen Assembly	10
124652	Burner Housing	10
124655	Platen Asby Left	18
124656	Platen Asby Right	19
124657	Burner Shield Mounting Kit	10
124662	Catch Pan Assembly	2
124675	Kit, Broiler Arm Extension 9.5" (AC2J)	17

124685	Cover Assembly Arm Extension 9.5" (AC2J)	17
124724	24" Conveyor Cut Link (Per Link)	7
125702	Extended Arm Catalyst Cover	13(Not Shown)
127027	Toaster Arm Cover (RH)	2
127359	Gas valve, LP	5
130657	Kit, Motor Reversing	N/A
131452	Lower Burner Support Assembly	15
131396	Side Panel Assembly	2
132659	Conveyor Drive Shaft Assembly (AC2J)	16
132910	Catch Pan, Insert (AC2J)	2
132922	Meat Stripper (AC2J)	3
132941	Teflon Sheet 12" x 31" (AC2J)	4
133558	Exit Tray Bun Ramp (AC2J)	2
500027	24" Conveyor Belt SS (Per Foot) 62" (3"arms), 82" (9"arms)	7
500033	Pliers Chain Conveyor	7
500035	Chain Roller #35 (Per Link)	4
500037	Sprocket #3518 X .500" (Motor)	4
500040	Sprocket #3510 x .500 (AC2J)	4
500061	Fuse 1.5 amp	6,Schematic
500063	Fuse 10 Amp	Schematic
500067	Fuse Block	Schematic
500070	Gas Gauge	5
500083	Link Half (Drive Chain)	4
500092	Link Master (Drive Chain)	4
500112	Potentiometer - Digital (Used on Broilers with serial numbers before 10941733)	Schematic
500118	Set Collar 3/4"	3,4
500134	Toaster Thermostat	Schematic
500158	Cord 10/4-SJO (8 Foot)	6
500174	Gas Line Flex 36" With Restraint	8

500186	Gas Regulator VR-48 (Natural)	5
500187	Gas Regulator VR-48 (LP)	5
500336	Gas Line Restraining Device RD-36	8
500340	Terminal Strip 3 Pole	Schematic
500417	Nipple 1/2" x 1.500"	5
500419	Nipple 1/2" x 2.500"	5
500657	Bell Reducer 3/4"-1/2"	5
500811	Tool Box	N/A
500940	Drive Motor	4
500941	Motor Brushes for Motor ASPEC 29894G@	N/A
501154	Teflon Sheet 12" x 35" (AC2B)	4
501163	ELL 90E	5
501624	Circuit Board MM23011 C SPEC #185B	Schematic
501698	Solenoid Valve 120 Volt Coil (Pilots)	5
501747	Transformer 120V-24V	Schematic
501748	Thumb Screw	4,6
501819	Toaster Platen 2500W 240V	4
501827	Knob With Stud	4
501835	Grease Pan	2
501864	Switch	Schematic
502197	Thermocouple Type K (Broiler Tunnel)	4
502248	Transformer 120V-12V	Schematic
502395	Sprocket #501 Ox 3/4"	4
502450	Pilot, Long 2.250" Long	6
502451	Pilot, Short 1.500" Long	6
502538	Bearing, Red	3
502550	Ignitor -Sensor- Pilot	6
502579	Timer 120 Sec. Delay Brake	Schematic
502611	Solenoid Valve 120 Volt Coil (High-Low Pressure)	5,Schematic

502631	Pipe Corrugated X 12" (5/8" DIA.)	5
502646	Screws, 8-32 x 1.250" (M) Pan	10
502647	Kep Nut, 8-32	10
502838	Sprocket #3515 X .750" (Toaster Drive)	4
502839	Sprocket #3524 X .750" (Broiler Drive) (AC2B, AC2J)	4
502868	Gas Valve (Natural)	5, Schematic
502892	Potentiometer - Rotary (used on broilers with Serial Numbers 10941733 and higher)	9, Schematic
502906	Potentiometer Knob	9
502989	Spacer	10
502991	Screws, 8-32 x .500 Flat Head	10
503081	Potentiometer Knob Lock	9
503287	Brush Motor for Motor AType 24Y2FETM-D4"	N/A
NATURAL GAS ORIFICES		
121668	Long & Short Pilot Orifice #68	6
502915	Orifice #BCR 18X (Ignitor-Sensor- Pilot Burner)	6
501718	Orifice #70 (Lighter Arm)	6
502713	Orifice #49 Button (Burners)	6
502765	Orifice #47 Button (Burners) (AC2J)	6
LP GAS ORIFICES		
122640	Long & Short Pilot Orifice .018" (Upper)	6
500487	Long & Short Pilot Orifice .011" (Lower)	6
502924	Orifice .010" (Ignitor-Sensor Pilot Burner)	6
502766	Orifice #79 (Lighter Arm)	6
502863	Orifice #56 Button ( Burners)	6
INTERNATIONAL PARTS (50 Hz)		
122615	Temperature Control (High/Low Gas)	Schematic
502168	Transformer 240V to 12V, 6VA	Schematic
502409	Transformer 240V to 120V, 30 VA	Schematic
502575	Gas Solenoid	Schematic

502868	Gas Valve	Schematic
502916	Transformer 240V to 24V, 56VA	Schematic
503149	Orifice, Burner #59, Button for LP/Butane Gas Broilers	Figure 6
<b>OPTIONAL CATALYTIC CONVERTER</b>		
123734	Broiler Arms Drip Tray	13
123735	Broiler Arm Rear Cover	13
123832	Heat Guard	13
125690	"V" Baffle Insert, Mount Asby	13
502944	Catalyst	13
<b>OPTIONAL CATALYTIC BROILER USING LP GAS</b>		
131093	Burner Flame Deflector	14
131094	Catalyst Extension Asby	14
131365	ASPL@ Top Burners	14

# BROILER LIMITED WARRANTY

MARSHALL AIR SYSTEMS, INC., ("Marshall") warrants to the first purchaser ("Purchaser") all new equipment of its manufacture to be free of defects in material and factory workmanship for a period of one year\* from date of shipment provided that (i) the equipment is installed in the Continental United States, Canada or Hawaii and operated according to the Owner's Manual while located at the original address of installation, (ii) the warranty registration card has been completed and returned to the factory within fifteen (15) days after installation, and (iii) a post-installation start-up has been performed by an authorized service representative (portable equipment not applicable). Marshall's obligation under this warranty is limited to the repair or replacement at its option of any defective part. Under certain circumstances, Marshall will reimburse Purchaser for limited labor costs in replacing parts during a period of not more than ninety (90) days after date of shipment, provided that Labor Reimbursement instructions are followed and items i, ii, and iii above are completed. See special provision for portable equipment. It is understood that Marshall's obligation with respect to equipment located outside the Continental United States, Canada or Hawaii is limited to replacement parts only.

\*The following broiler parts have a six month part warranty:

- Burner Shields and Screens Burner Grids
- Burner Gaskets
- Electric Broiler Elements
- Flame Runners

Because Marshall does not and cannot control Purchaser's installation, use, and maintenance of equipment manufactured by Marshall, this warranty DOES NOT COVER:

Any equipment calibration;  
Any component disassembled in the field;  
Damage due to improper cleaning and/or abuse, i.e. burner rotation, grease accumulation in electrical components or plugs (hosing or "watering down" equipment will cause electrical failures not covered by warranty);  
Blown fuses or bulbs, motor brushes and Teflon components;  
Any replacement parts used on the equipment which **are** not purchased from Marshall;  
Accessory components not installed or manufactured by Marshall.  
Shipping damage must be reported to the carrier and is not covered under this warranty. Marshall will not be liable for damage as a result of improper installation, misuse, abuse, alteration of original design, incorrect voltage, unauthorized service, breakage of fragile items, or any other damage caused by an act out of Marshall's control.

The effect of corrosion, fire, and normal wear on the equipment or component parts is not covered by this warranty. This warranty does not cover cooking performance, smoke capture or holding temperatures which is a function of food types, textures, temperatures, equipment line ups and other variables chosen by the Purchaser and over which Marshall has no control. This warranty does not apply to damage caused by accident or to damage caused by the negligence of Purchaser or the employees of Purchaser or to damage caused by lightning generated electrical current or any other Act of God whatsoever. This warranty does not apply to any equipment bearing a serial number which has been tampered with or altered. Marshall reserves the right to accept or reject any such claim in whole or in part. Marshall will not accept the return of any product without prior written approval from Marshall, and all such approved returns shall be made at Purchaser's sole expense.

THIS WARRANTY IS IN LIEU OF ALL OTHER WARRANTIES, EXPRESS OR IMPLIED, INCLUDING THE IMPLIED WARRANTY OF MERCHANTABILITY AND THE IMPLIED WARRANTY OF FITNESS FOR A PARTICULAR PURPOSE, OR PATENT OR OTHER INTELLECTUAL PROPERTY RIGHT INFRINGEMENT, AND EXCEPT FOR THE EXPRESS WARRANTY CONTAINED HEREIN, THE EQUIPMENT IS SOLD "AS IS." REMEDIES UNDER THIS WARRANTY AND UNDER ANY WARRANTY THAT MAY SURVIVE THE DISCLAIMER OF WARRANTIES ARE LIMITED EXCLUSIVELY TO THOSE REMEDIES DESCRIBED ABOVE. NO OTHER REMEDY IS AVAILABLE UNDER THIS WARRANTY OR ANY OTHER WARRANTY. NEITHER THIS WARRANTY NOR ANY OTHER WARRANTY COVERS, AND MARSHALL WILL NOT BE RESPONSIBLE FOR, ANY INCIDENTAL OR CONSEQUENTIAL DAMAGES, INCLUDING BUT NOT LIMITED TO THE COST OF DISASSEMBLY AND SHIPMENT OF THE EQUIPMENT, PRODUCTION OR PRODUCT LOSSES, INJURY TO OTHER PROPERTY, OR LOST PROFITS RESULTING FROM THE USE OF OR INABILITY TO USE THE PRODUCTS OR FROM THE PRODUCTS BEING INCORPORATED IN OR BECOMING A COMPONENT OF ANY OTHER PRODUCT OR GOODS, OR OTHER LOSSES. WHERE, DUE TO OPERATION OF LAW, CONSEQUENTIAL AND INCIDENTAL DAMAGES CANNOT BE EXCLUDED, THEY ARE EXPRESSLY LIMITED IN AMOUNT TO THE PURCHASE PRICE OF THE EQUIPMENT.

**FOR INTERNATIONAL INSTALLATIONS -- PLEASE CONTACT YOUR LOCAL  
MARSHALL AIR SYSTEMS RECOGNIZED DISTRIBUTOR.**

## **BROILER WARRANTY PROCEDURES**

### **RETURN GOODS AUTHORIZATION FOR PARTS - FACTORY DIRECT**

For prompt warranty parts replacement and RGA processing, please call Marshall's Customer Service Department at 800-722-3474 or 704-525-6230 for assistance. In all cases, a Return Goods Authorization (RGA) number must be issued by Marshall Air Systems, Inc. Unauthorized returns will not be processed.

Option #1: Purchaser to return part prepaid to Factory, Marshall to repair or replace at own expense if defective, and ship part back to Purchaser prepaid.

Option #2: Marshall to furnish replacement part freight prepaid with or without requesting return of the defective part.

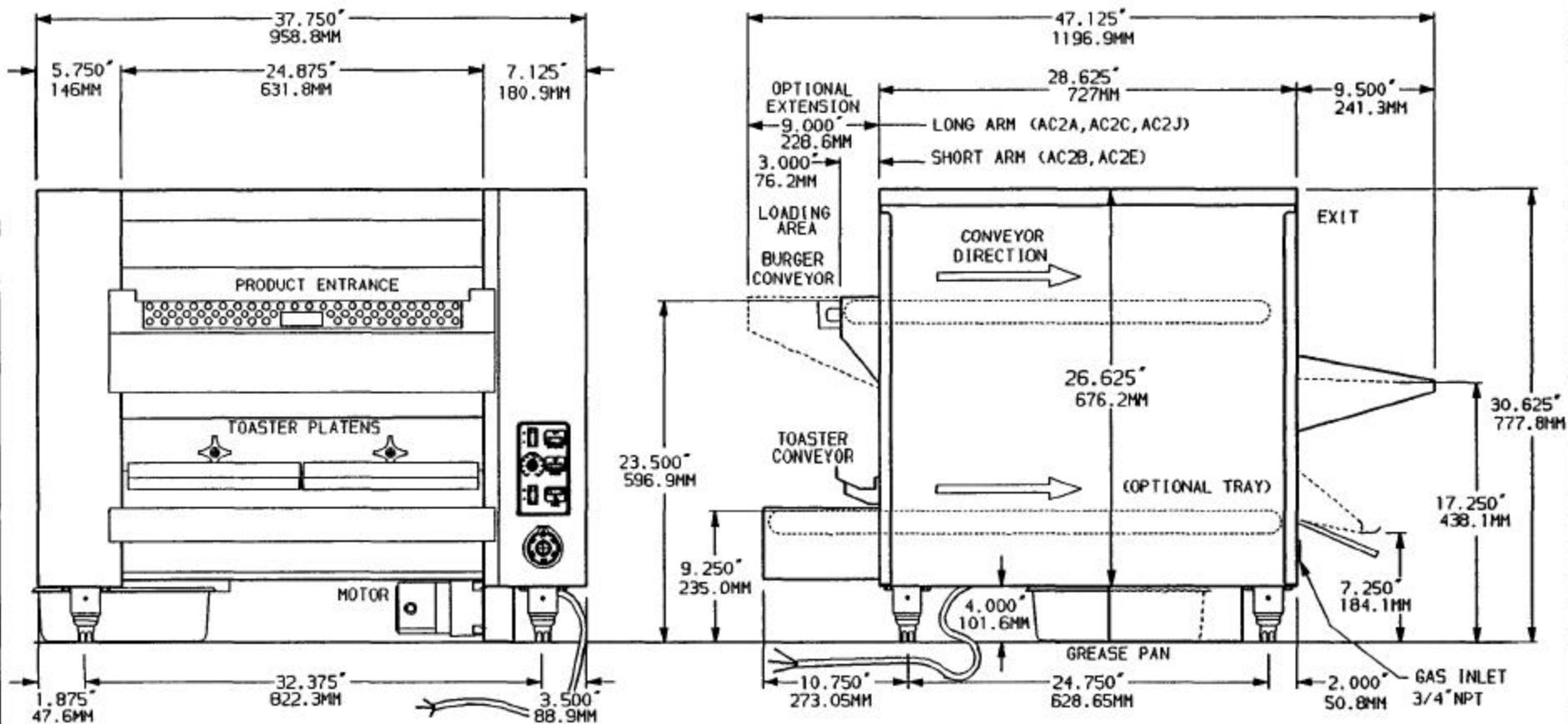
### **WARRANTY LABOR REIMBURSEMENT AND/OR PARTS REPLACEMENT THROUGH RECOGNIZED MAINTENANCE & REPAIR CENTERS**

Normally, labor will be covered under the start up fee. In the unlikely event this does not apply, consult Marshall Air Systems, Inc. To be reimbursed for warranty labor costs, authorization must be given by Marshall Air Systems, Inc. Unauthorized work will not be reimbursed. Work must be performed by a Marshall Air Systems Recognized Service Agency within the service time allowance guidelines and must be submitted along with failed parts (if applicable) to Marshall Air Systems (freight prepaid) within 30 days of the work being performed. Travel is covered, but must not exceed 50 miles or 1 hour, whichever is greater. Call Marshall's Service Department at 800-722-3474 or 704-525-6230 with any questions. Service is to be performed by recognized service agencies during normal working hours. Owner to pay for all other charges including excessive travel or overtime charges. **DIAGNOSTIC LABOR CHARGES ARE INCLUDED IN SERVICE TIME ALLOWANCE GUIDELINES.** All portable equipment (under 90 pounds) shall be delivered by Purchaser, at his/her expense, to the nearest authorized service agency for in-shop repair or at purchaser's discretion he/she will pay all travel time and mileage expenses for portable equipment.

### **NON-WARRANTY RETURNS:**

All items returned for customer convenience are subject to a 20% restocking fee. In the event of an error by Marshall Air Systems, Inc., a Returned Goods Authorization will be issued for full credit.

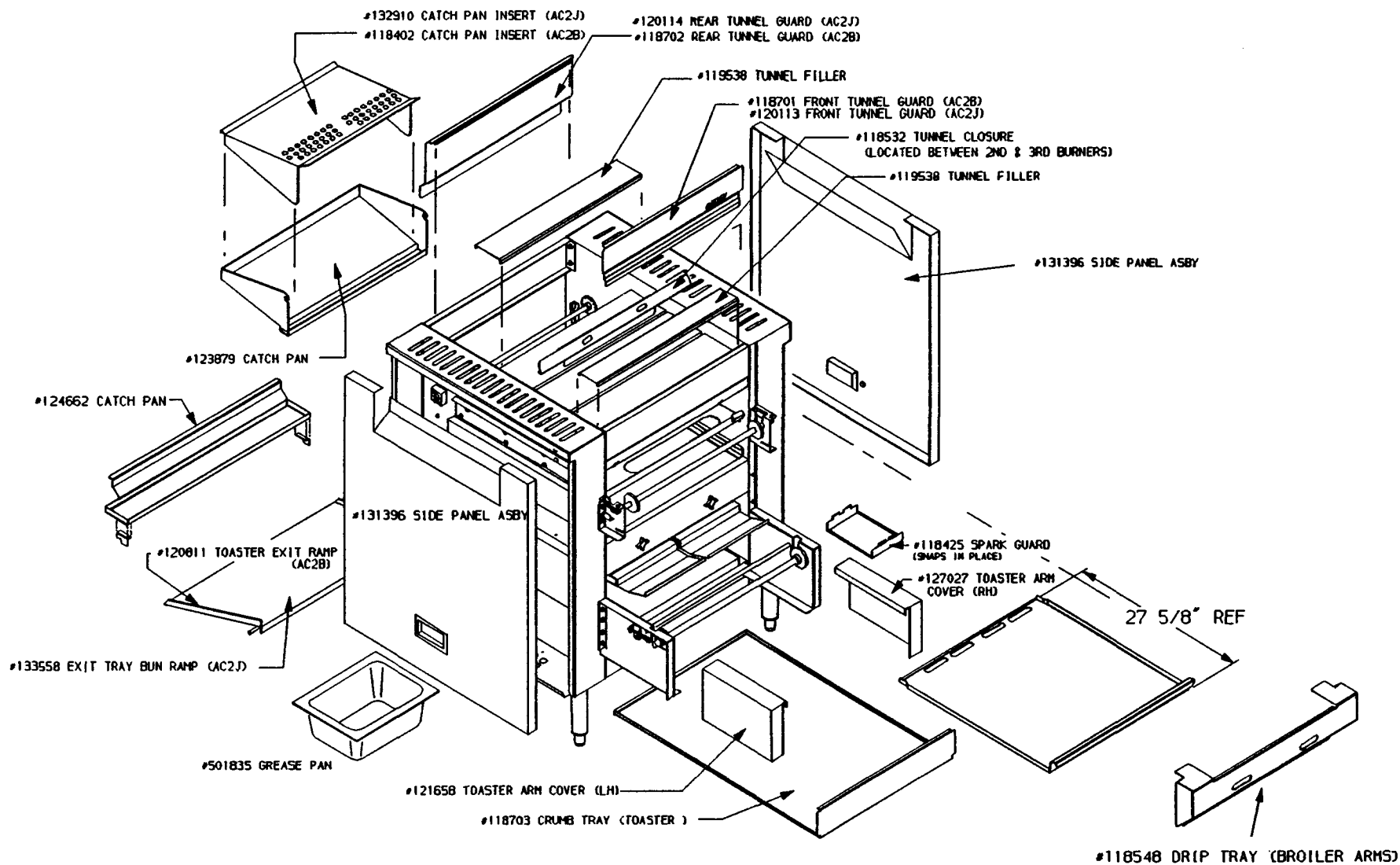
### **FOR INTERNATIONAL INSTALLATIONS " PLEASE CONTACT YOUR LOCAL MARSHALL AIR SYSTEMS RECOGNIZED DISTRIBUTOR.**



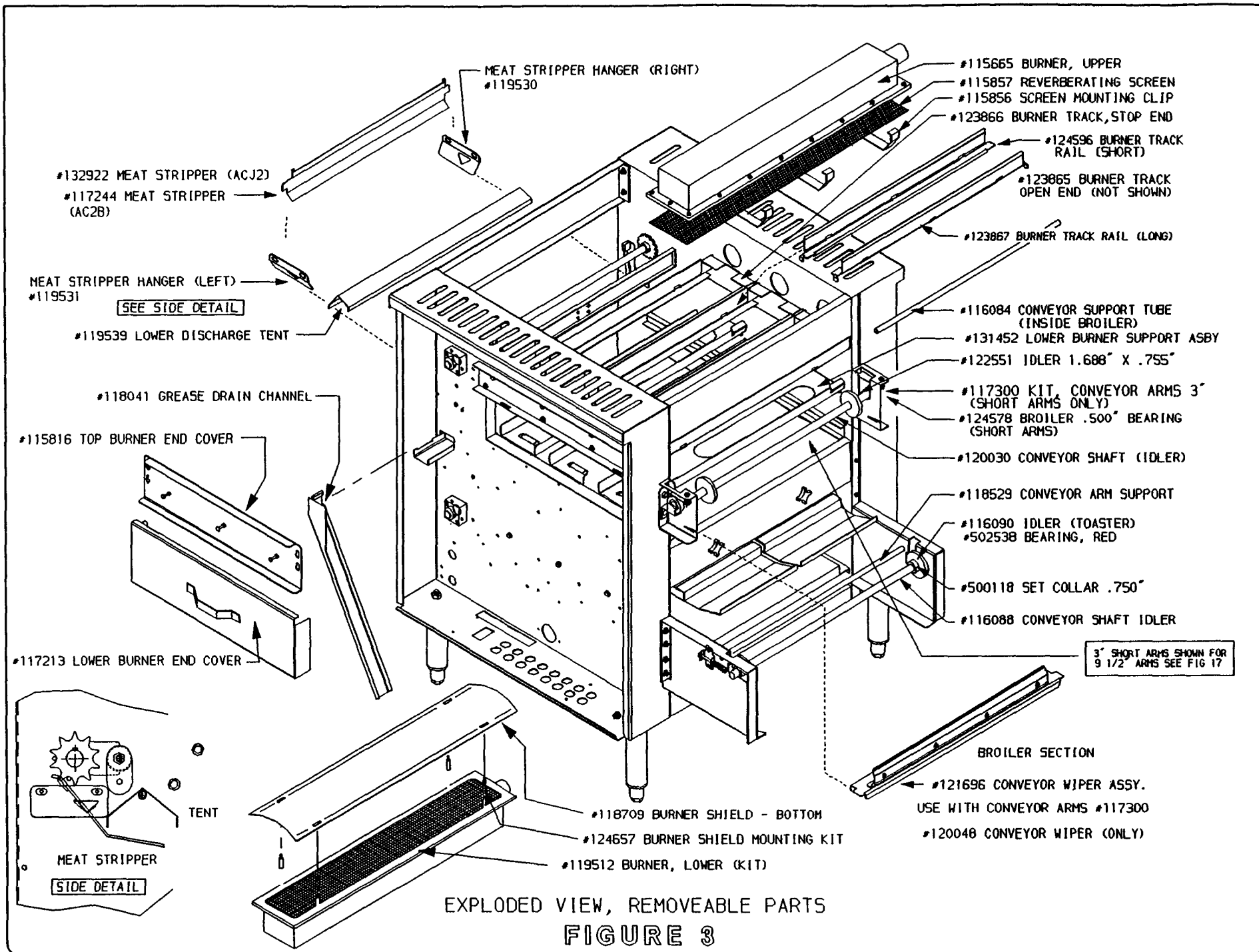
GAS BROILER (COOKING) & ELECTRIC (TOASTER UNIT)  
 NATURAL GAS BTUH: 101,000 MANIFOLD PRESSURE: 5" HIGH 4" LOW  
 PROPANE GAS BTUH: 101,000 MANIFOLD PRESSURE: 10" HIGH 8" LOW  
 ELECTRICAL: 208 VOLTS, 1 PHASE, 60 HZ, 19 AMPS

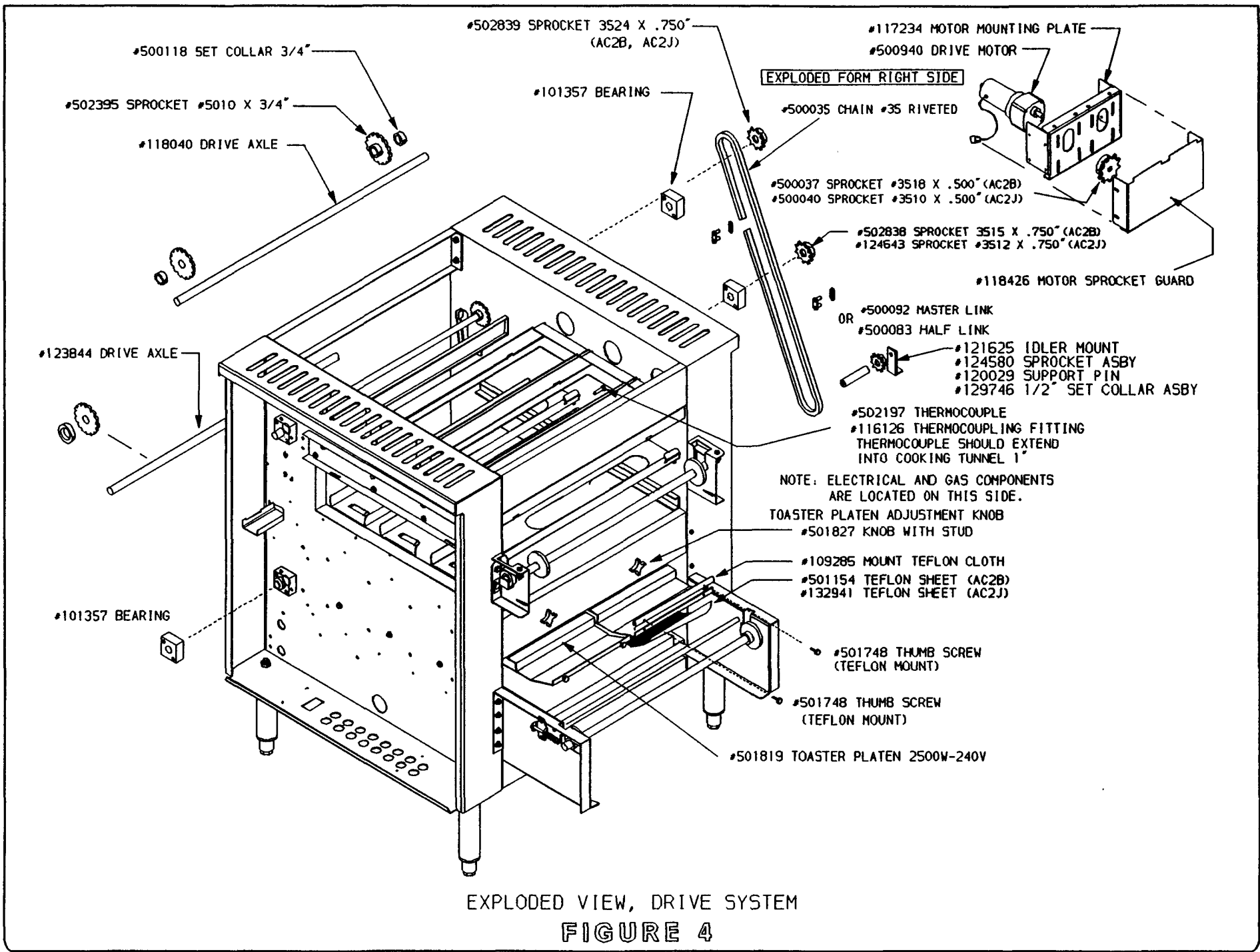
OVERALL DIMENSIONS 2424G 121224G

FIGURE 1

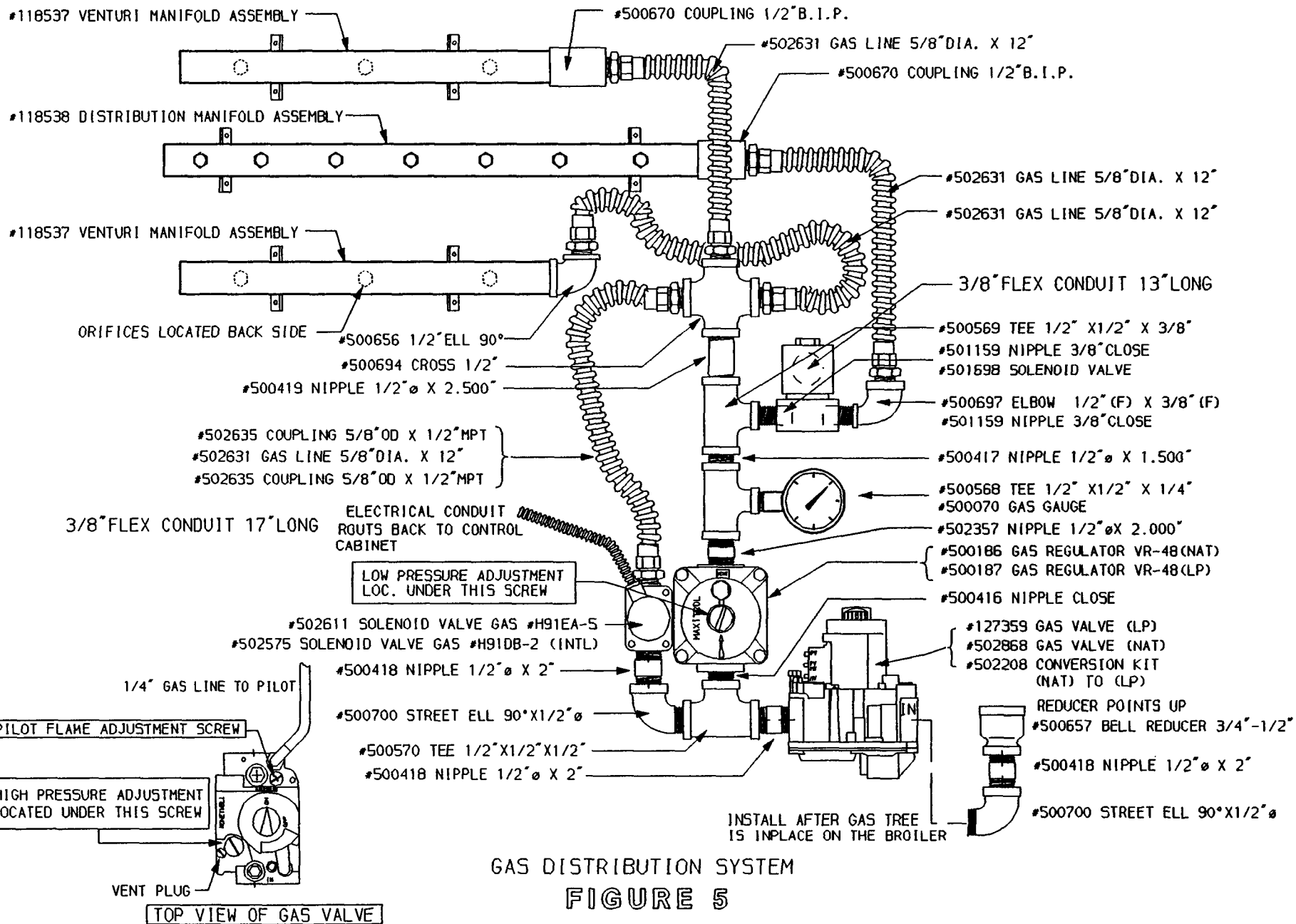


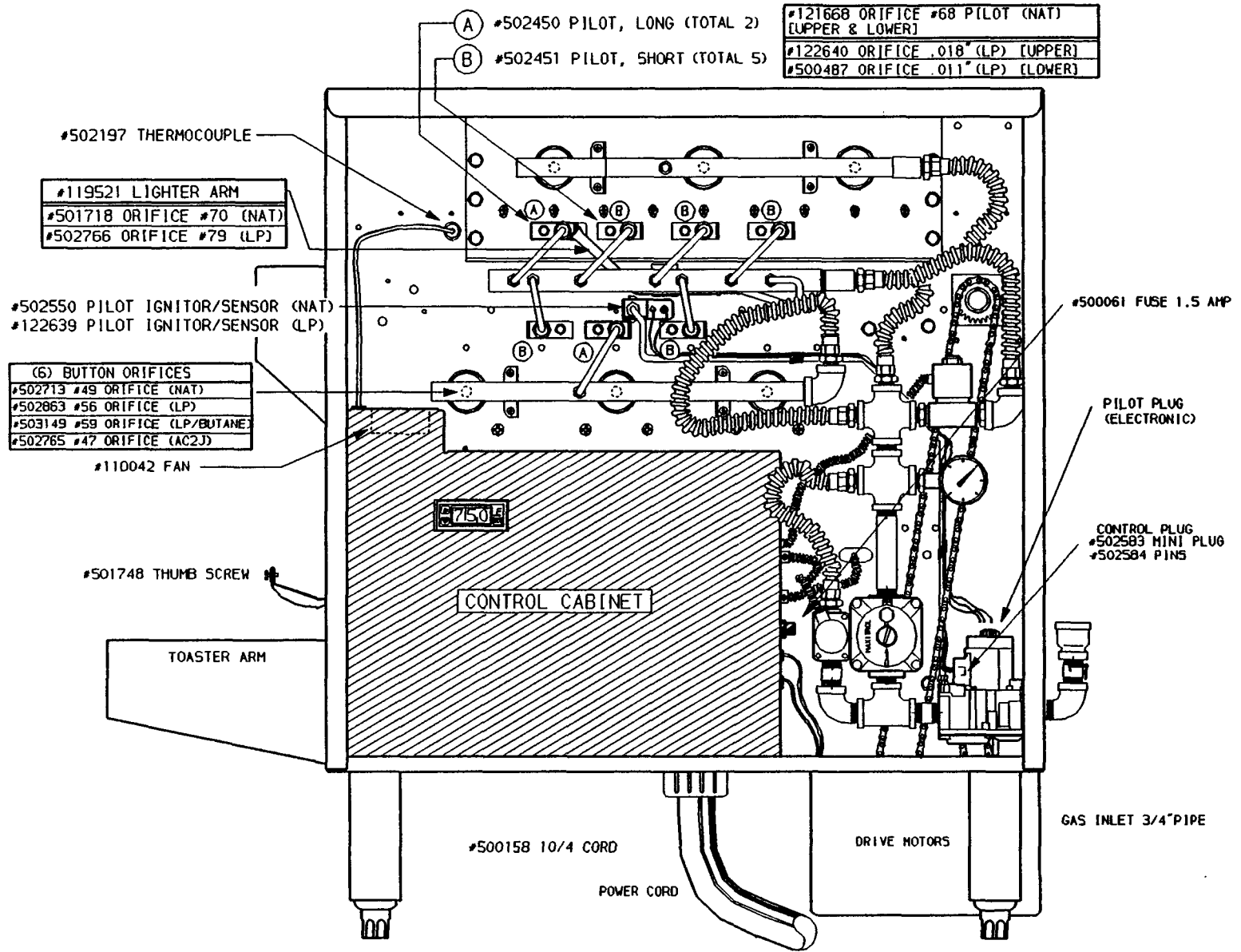
EXPLODED VIEW, REMOVEABLE PARTS  
 FIGURE 2



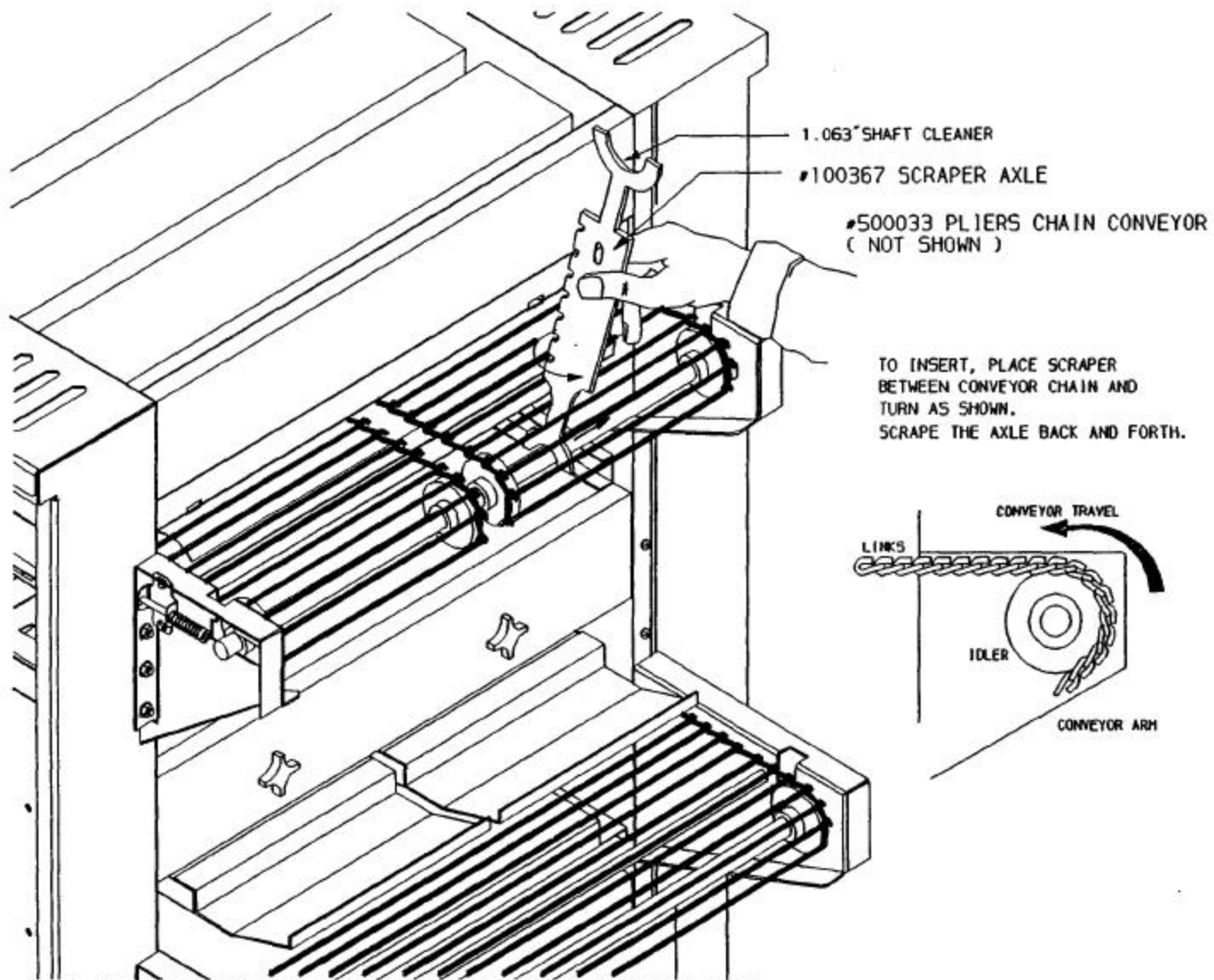


EXPLODED VIEW, DRIVE SYSTEM  
**FIGURE 4**

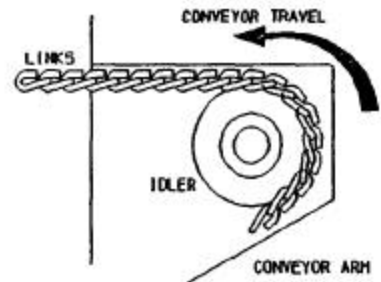




PILOT SYSTEM  
FIGURE 6



TO INSERT, PLACE SCRAPER  
 BETWEEN CONVEYOR CHAIN AND  
 TURN AS SHOWN.  
 SCRAPE THE AXLE BACK AND FORTH.



NOTE: THE CHAIN PLIERS CAN OPEN ANY LINK TO UNHOOK THE CONVEYOR IF NEEDED.  
 THE LINK MUST BE CLOSED BEFORE OPERATING THE CONVEYOR, USING THE CHAIN PLIERS.

CONVEYOR AXLE SCRAPER  
 FIGURE 7

(FOR USE WITH MOVABLE GAS APPLIANCES)

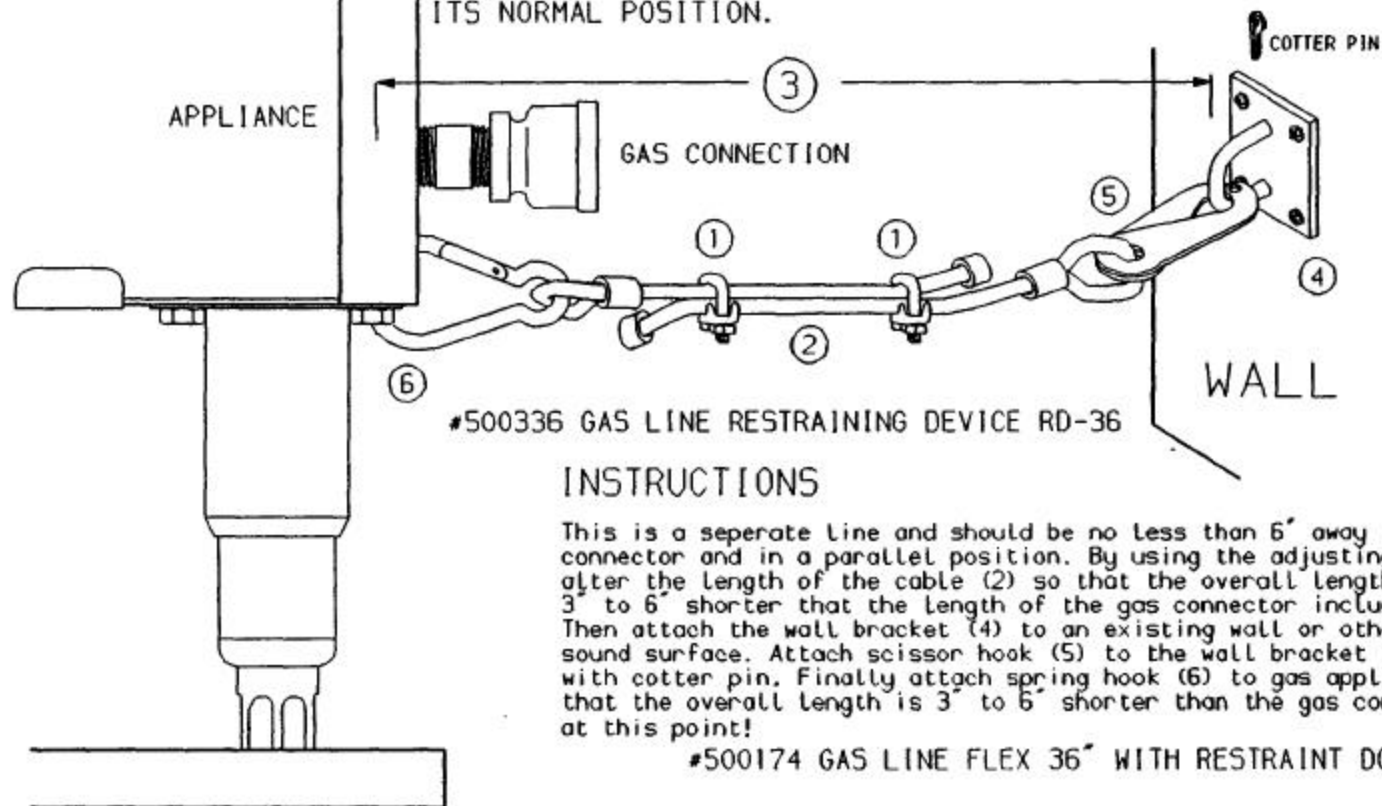
Per ANSI Regulations Under:

Z-21.69-1979 & Z-21.69a-1983 (CONNECTORS)

Z-21.41b-1983 (QUICK DISCONNECT DEVICES)

With current revisions.

NOTE: THIS RESTRAINING DEVICE MUST ALWAYS BE CONNECTED WHEN THE APPLIANCE IS IN SERVICE. DISCONNECT FOR MOVEMENT SUCH AS SERVICING OR CLEANING. THEN RECONNECT THIS RESTRAINT WHEN THE APPLIANCE HAS BEEN RETURNED TO ITS NORMAL POSITION.



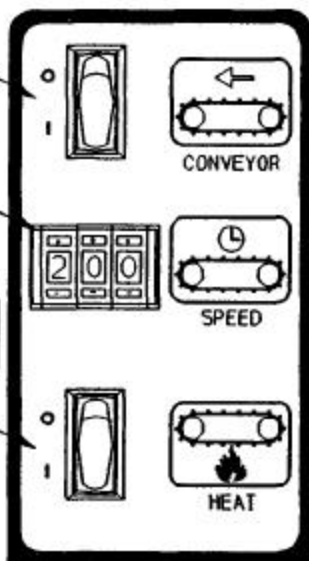
### INSTRUCTIONS

This is a separate line and should be no less than 6" away from the gas connector and in a parallel position. By using the adjusting clamps (1) alter the length of the cable (2) so that the overall length (3) is 3" to 6" shorter than the length of the gas connector including the fittings. Then attach the wall bracket (4) to an existing wall or other architecturally sound surface. Attach scissor hook (5) to the wall bracket (4) and secure with cotter pin. Finally attach spring hook (6) to gas appliance. Make certain that the overall length is 3" to 6" shorter than the gas connector at this point!

#500174 GAS LINE FLEX 36" WITH RESTRAINT DORMONT

RESTRAINING DEVICE  
FIGURE 8

CONVEYOR SWITCH  
BROILER & TOASTER



DIGITAL SPEED  
CONTROL RUNS CONVEYORS.  
THE LARGER NUMBER  
INCREASES CONVEYOR SPEED

FOR USE WITH SERIAL NUMBERS  
BEFORE 10941733

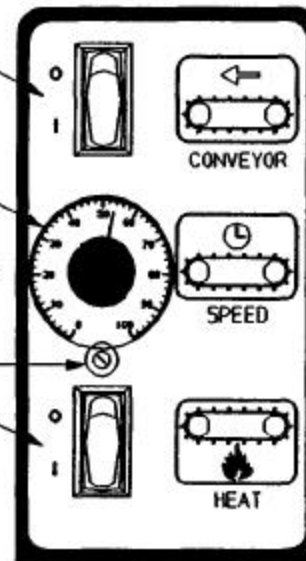
HEAT SWITCH  
BROILER ONLY

PLATEN TEMPERATURE  
THERMOSTAT



MECHANICAL TEMPERATURE CONTROLLER  
FOR TOASTER PLATEN TEMPERATURE  
(OPTIONAL DIGITAL SPEED CONTROL SHOWN)

CONVEYOR SWITCH  
BROILER & TOASTER



ROTARY DIAL SPEED  
CONTROL RUNS CONVEYORS.  
THE LARGER NUMBER  
INCREASES CONVEYOR SPEED

POTENTIOMETER LOCK  
503081

HEAT SWITCH  
BROILER ONLY

PLATEN TEMPERATURE  
THERMOSTAT



MECHANICAL TEMPERATURE CONTROLLER  
FOR TOASTER PLATEN TEMPERATURE  
(STANDARD ROTARY SPEED CONTROL SHOWN)

CONTROL PANEL  
FIGURE 9

REPLACEMENT KIT FOR UPPER OR LOWER BURNERS

#124630 BURNER WIRE FACE KIT (5" X 23.375")

CONSISTING OF: BURNER SCREWS AND KEP NUTS  
BURNER FRAME & SCREENS ASBY.  
BURNER SHIELD MOUNTING KIT  
GASKET #123145

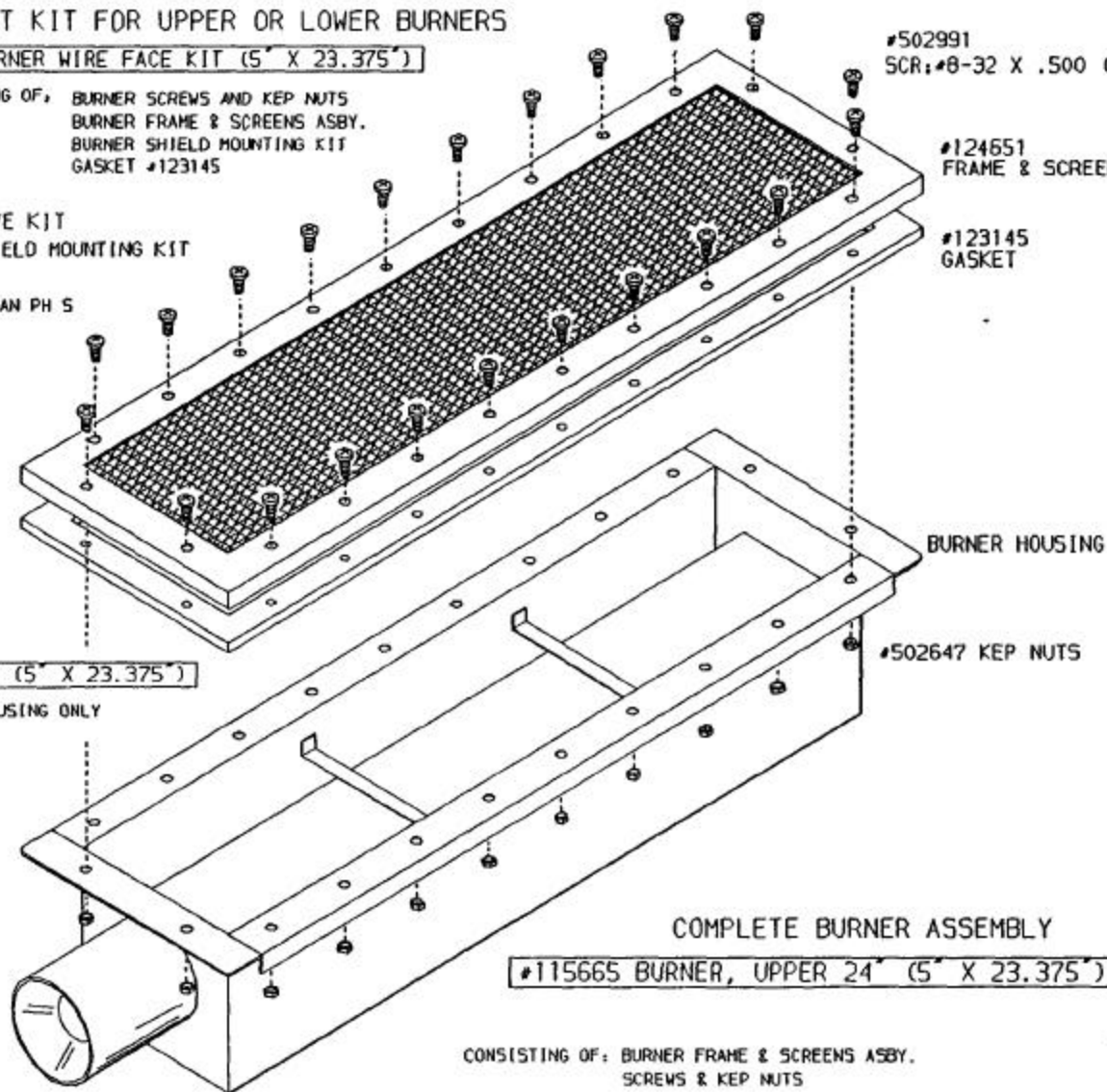
PARTS INCLUDED WITH ABOVE KIT  
503696 (124657) BURNER SHIELD MOUNTING KIT

- #502646  
SCR: #8-32 X 1.250" (M) PAN PH 5  
(4) REQUIRED
- #502989 SPACER  
(4) REQUIRED
- #502647 KEP NUT #8-32  
(4) REQUIRED

#502991  
SCR: #8-32 X .500 (M) FLT PH 5

#124651  
FRAME & SCREENS ASBY.

#123145  
GASKET



#124652 BURNER HOUSING (5" X 23.375")

CONSISTING OF: BURNER HOUSING ONLY

BURNER HOUSING

#502647 KEP NUTS

COMPLETE BURNER ASSEMBLY

#115665 BURNER, UPPER 24" (5" X 23.375")

CONSISTING OF: BURNER FRAME & SCREENS ASBY.  
SCREWS & KEP NUTS

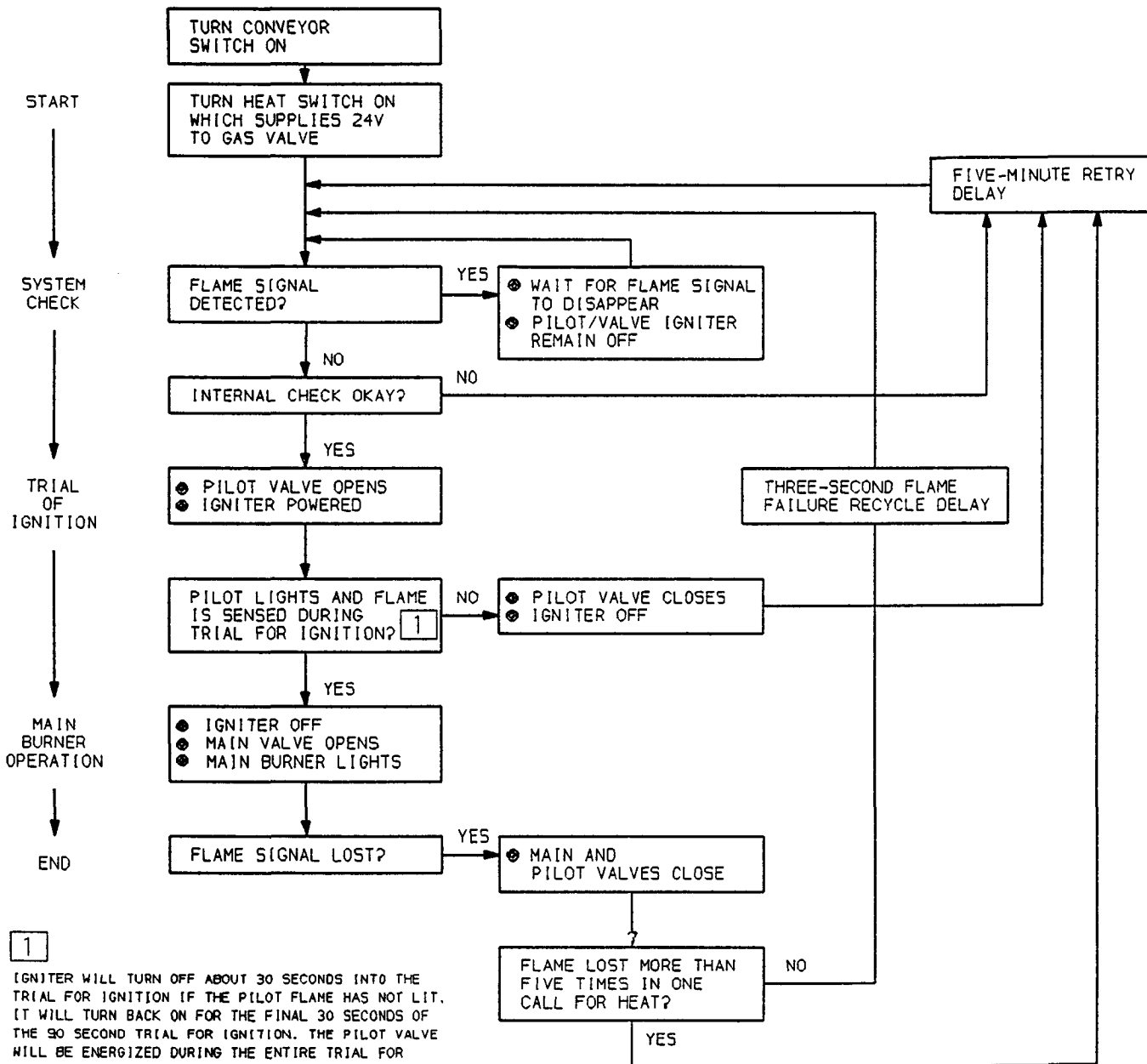
LOWER BURNER SUPPORT ASSEMBLY

FIGURE 10

## HOT SURFACE (HSI) PILOT SYSTEM SEQUENCE OF OPERATION

THE HONEYWELL HOT SURFACE PILOT IGNITION SYSTEM USES BOTH PROVEN HOT SURFACE IGNITION (HSI) TECHNOLOGY AND FLAME RECTIFICATION TECHNOLOGY TO ACHIEVE A NEW LEVEL OF SAFETY IN GAS BURNER CONTROL. THE CONCEPT OF A PROVEN HOT SURFACE IGNITER HAS BEEN USED FOR YEARS IN GAS RANGES AND CLOTHES DRYERS, FLAME RECTIFICATION IS THE STANDARD FLAME PROVING METHOD IN DOMESTIC WARM AIR FURNACES AND BOILERS. IN THE SV9501 SYSTEM, A PROVEN HOT SURFACE IGNITER IS USED TO LIGHT A SMALL PILOT, NOT THE MAIN BURNER AS IN A DOMESTIC OVEN. IF THE HSI IS MISSING OR BROKEN, THE PILOT VALVE WILL STILL OPEN DURING THE 90 SECOND IGNITION TRIAL WHICH ALLOWS LIGHTING THE PILOT WITH A MATCH. WHEN, THROUGH FLAME RECTIFICATION, THE FLAME ROD SENSES PILOT FLAME, THE MAIN VALVE OPENS AND THE PILOT LIGHTS THE MAIN BURNER. IF THE PILOT IS NOT PROVED, THE MAIN GAS VALVE WILL NOT OPEN.

12259F1G11



1  
IGNITER WILL TURN OFF ABOUT 30 SECONDS INTO THE TRIAL FOR IGNITION IF THE PILOT FLAME HAS NOT LIT. IT WILL TURN BACK ON FOR THE FINAL 30 SECONDS OF THE 90 SECOND TRIAL FOR IGNITION. THE PILOT VALVE WILL BE ENERGIZED DURING THE ENTIRE TRIAL FOR IGNITION. THIS IS NORMAL OPERATION FOR THIS GAS IGNITION SYSTEM. THIS ALLOWS FOR THE PILOT TO BE LIT WITH A MATCH DURING THE IGNITION TRIAL IN THE EVENT THE HSI IS BROKEN.

HOT SURFACE PILOT OPERATION

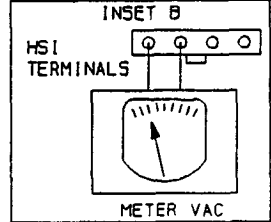
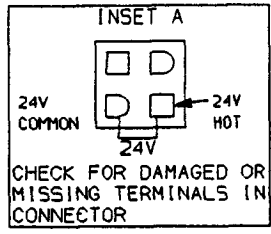
FIGURE 11

- TURN OFF GAS SUPPLY
- ASSURE SAFETY VALVE SWITCH IS IN ON POSITION
- DISCONNECT SYSTEM CONTROL HARNESS
- TURN THE CONVEYOR AND HEAT SWITCHES ON.

CHECK FOR PROPER VOLTAGE AT CONTROL HARNESS (SEE INSET A). VOLTAGE SHOULD BE 24V BETWEEN 24V COMMON AND 24V HOT.

CHECK:

- LINE VOLTAGE POWER
- LOW VOLTAGE TRANSFORMER
- WIRING
- POWER TO HEAT SWITCH



PLUG HARNESS INTO SAFETY VALVE CONTROL WAIT FOR INTERNAL CHECK DELAY

IGNITER WARMS UP AND GLOWS RED

UNPLUG PILOT BURNER CABLE, MEASURE VOLTAGE AT HSI ELEMENT OUTPUT (SEE INSET B) 24V NOMINAL

REPLACE SAFETY VALVE CONTROL

NOTE: IGNITER WILL CYCLE OFF AND BACK ON ONCE DURING THE 90 SECOND IGNITION TRIAL

REPLACE IGNITER/FLAME ROD ASSEMBLY

RECONNECT PILOT BURNER CABLE

\*TURN ON GAS SUPPLY  
\*PILOT BURNER LIGHTS

CHECK THAT PILOT GAS IS FLOWING

REPLACE SAFETY VALVE CONTROL

MEASURE VOLTAGE BETWEEN 24V HOT AND 24V COMMON LEADS TO SAFETY VALVE CONTROL. MUST MEASURE AT LEAST 19.5VAC WITH IGNITER POWERED (SEE INSET A). THIS CHECK MUST BE DONE WITH THE SAFETY VALVE CONTROL CONNECTED AND IGNITER POWERED.

CHECK TRANSFORMER AND LINE VOLT SUPPLY

REPLACE IGNITER/FLAME ROD ASSEMBLY

MAIN VALVE OPENS AND MAIN BURNERS LIGHT

- CHECK THAT PILOT FLAME MAKES GOOD CONTACT WITH PILOT BURNER FLAME RUNNER
- CHECK FOR GOOD ELECTRICAL CONNECTION THROUGH THE PILOT TUBING
- IF BOTH OF THE ABOVE ARE GOOD, REPLACE IGNITER/FLAME ROD ASSEMBLY
- BURNER ORIFICES ARE PLUGGED

SYSTEM IS OKAY

MAIN BURNERS LIGHT

REPLACE SAFETY VALVE CONTROL

HOT SURFACE PILOT TROUBLE SHOOTING

FIGURE 12

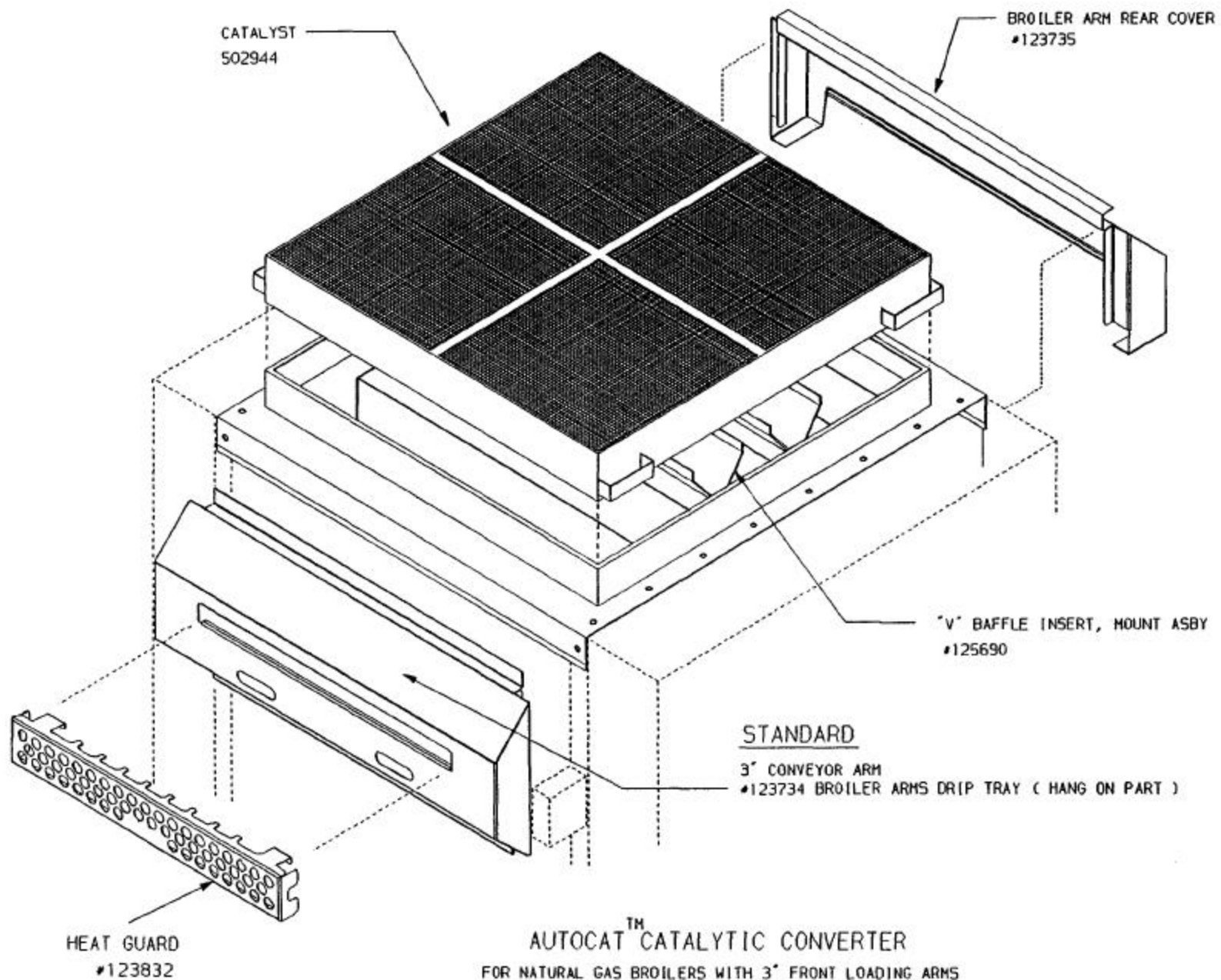
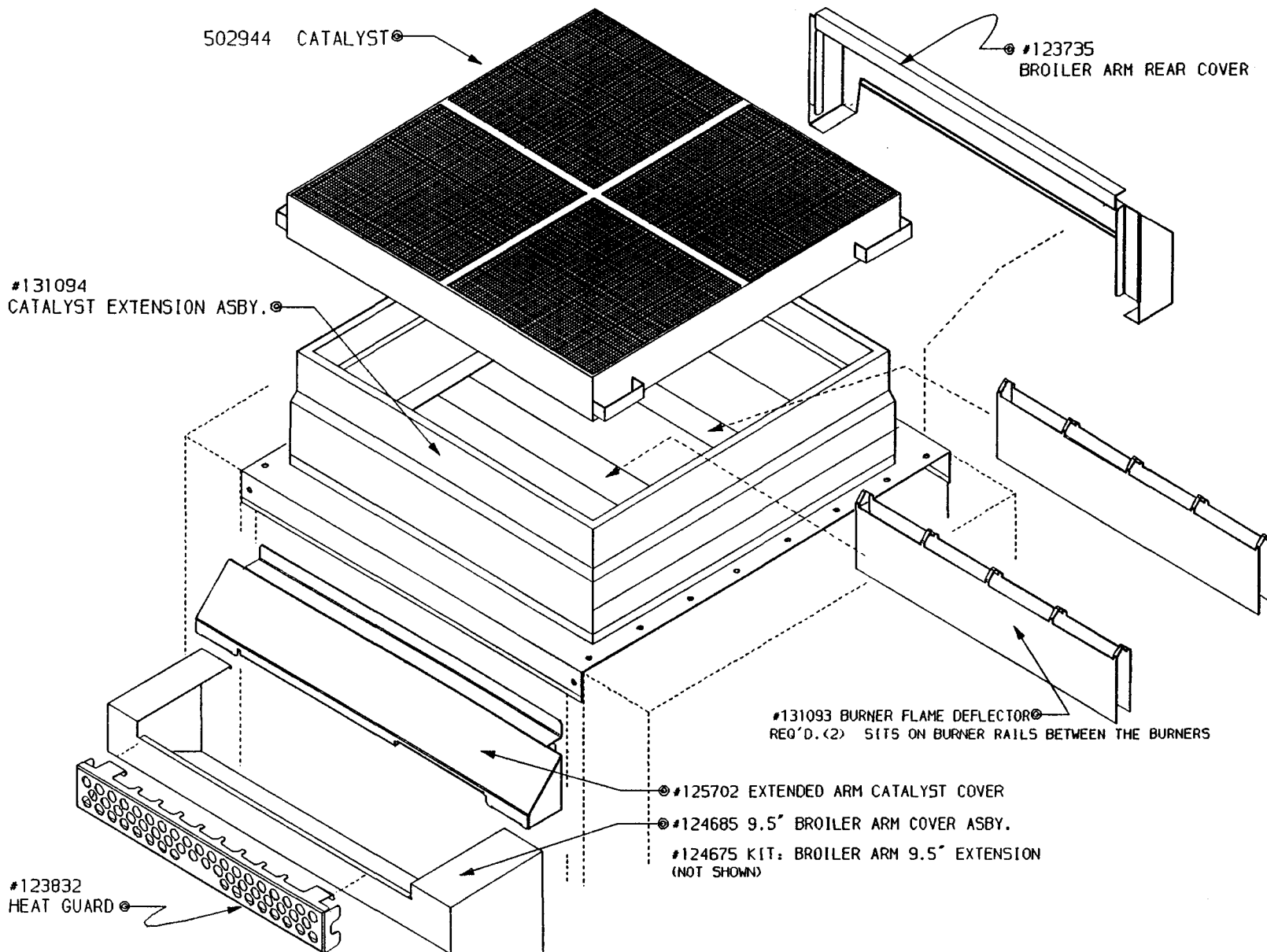


FIGURE 13



AUTOCAT<sup>TM</sup> CATALYTIC CONVERTER  
 FOR LP GAS BROILERS WITH 9 1/2" FRONT LOADING ARMS

FIGURE 14

#502219  
SCR: #10-24 X .375" PAN PL  
REQ'D. (4)

#131451  
SUPPORT, LOWER BURNER  
REQ'D. (1)

#131100  
MOUNT, LOWER BURNER SUPPORT  
REQ'D. (2)

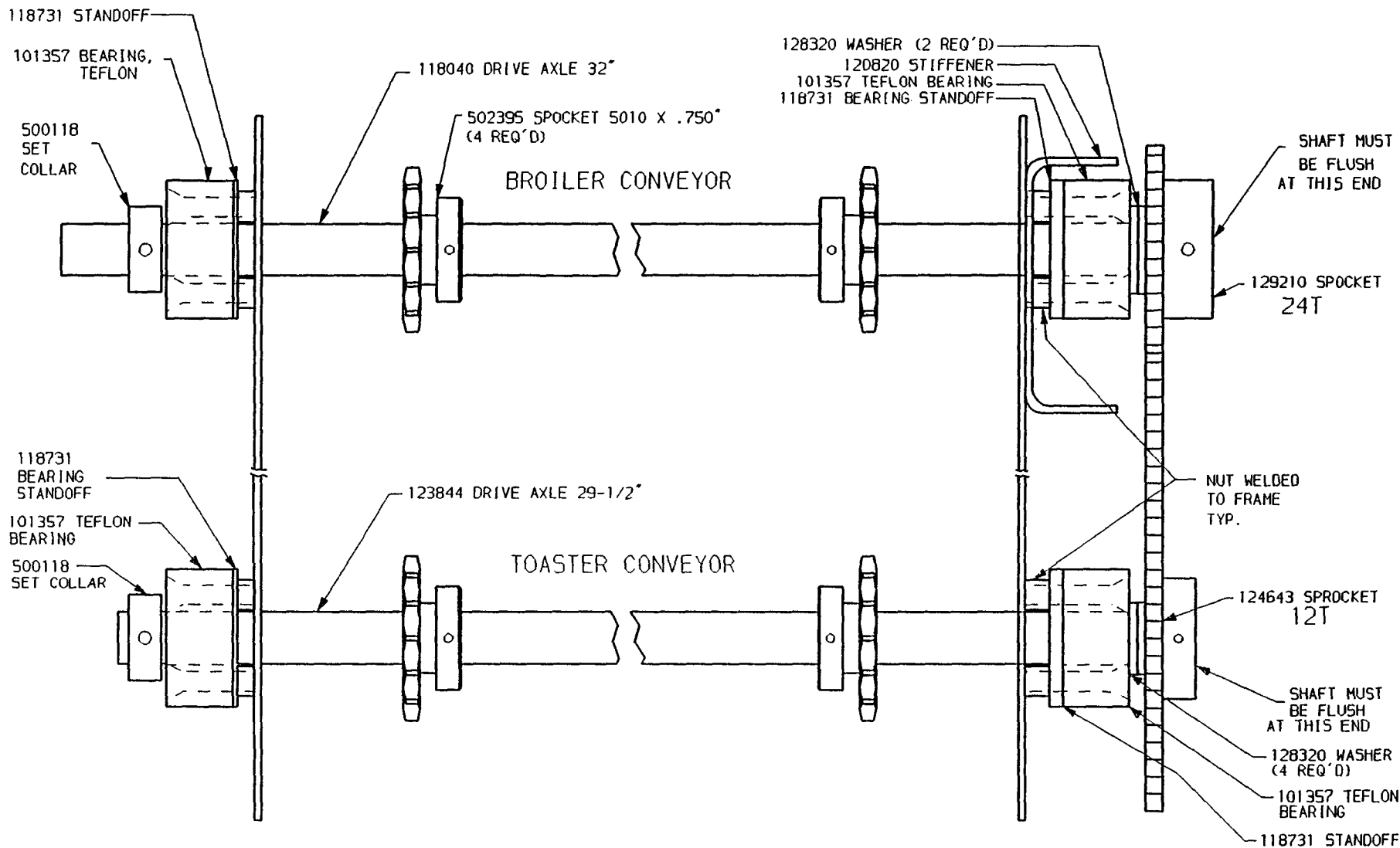
THE BURNER SLIDES ALONG THE CHANNEL

TAP HOLES #10-24

BROILER SIDE

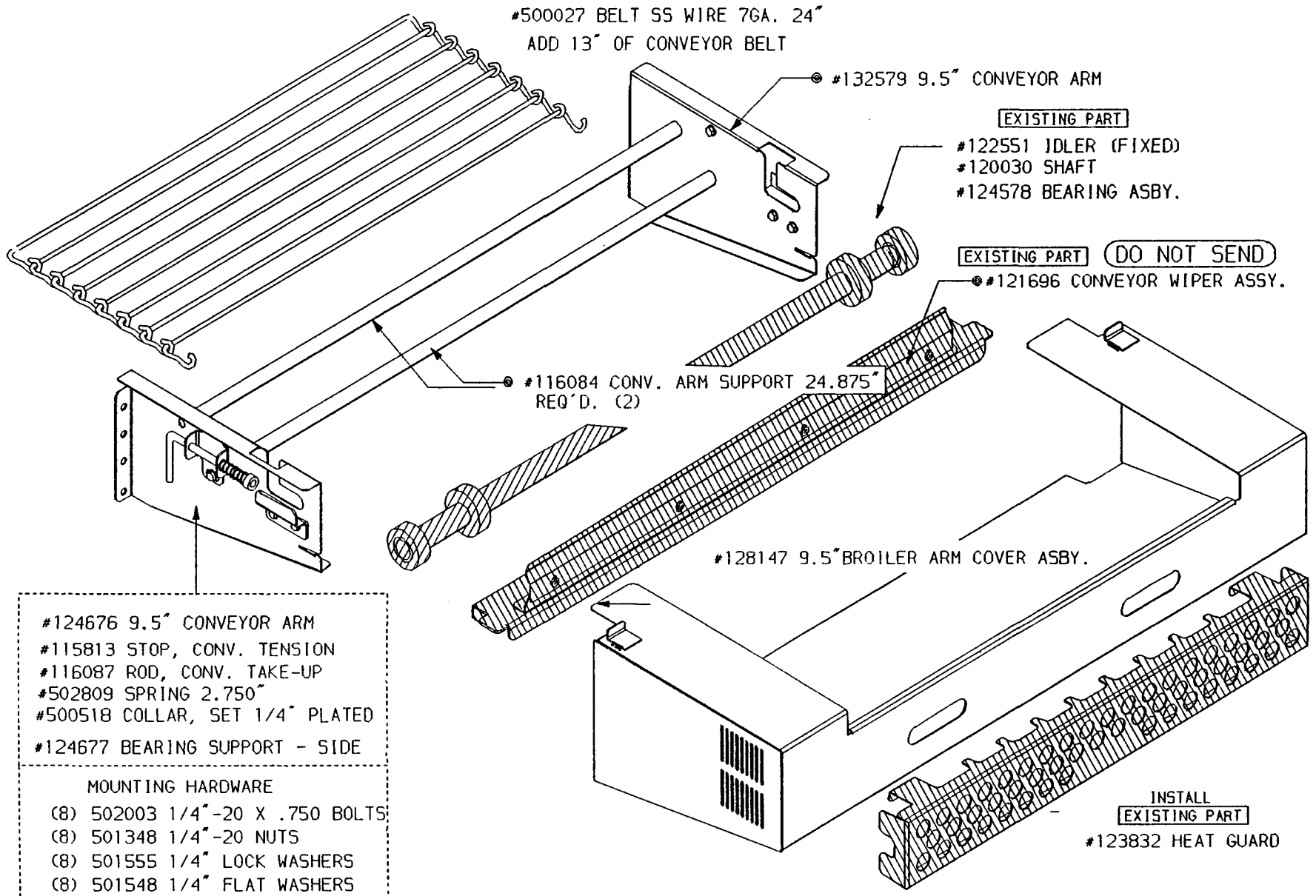
FOR BURNERS MANUFACTURED AFTER APRIL 1997

LOWER BURNER SUPPORT ASSEMBLY  
FIGURE 15



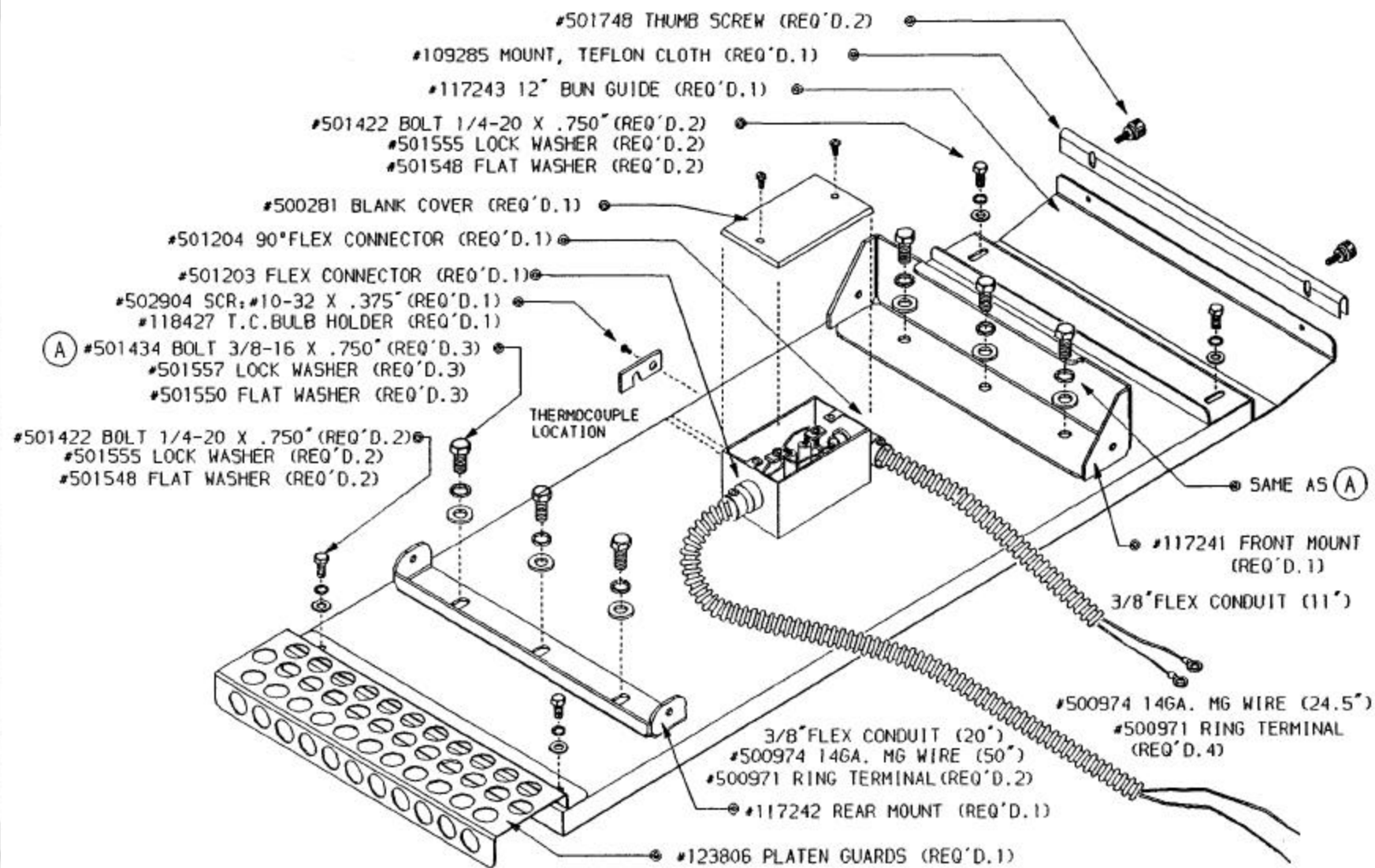
CONVEYOR DRIVE SHAFT ASBY #132659 (AC2J)

FIGURE 16



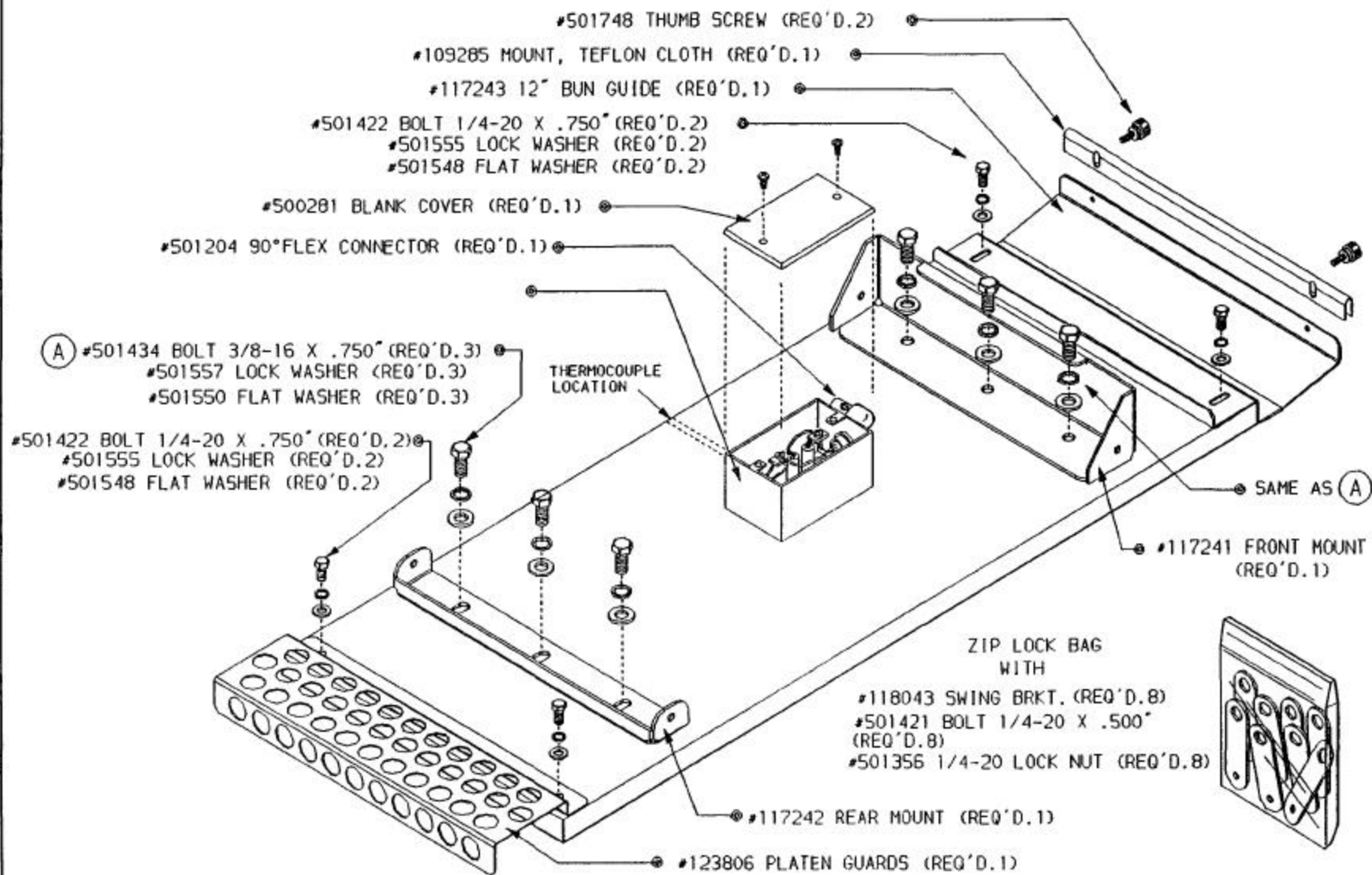
KIT, 9.5 ARM EXTENSION ASBY #124675 (AC2J)

FIGURE 17



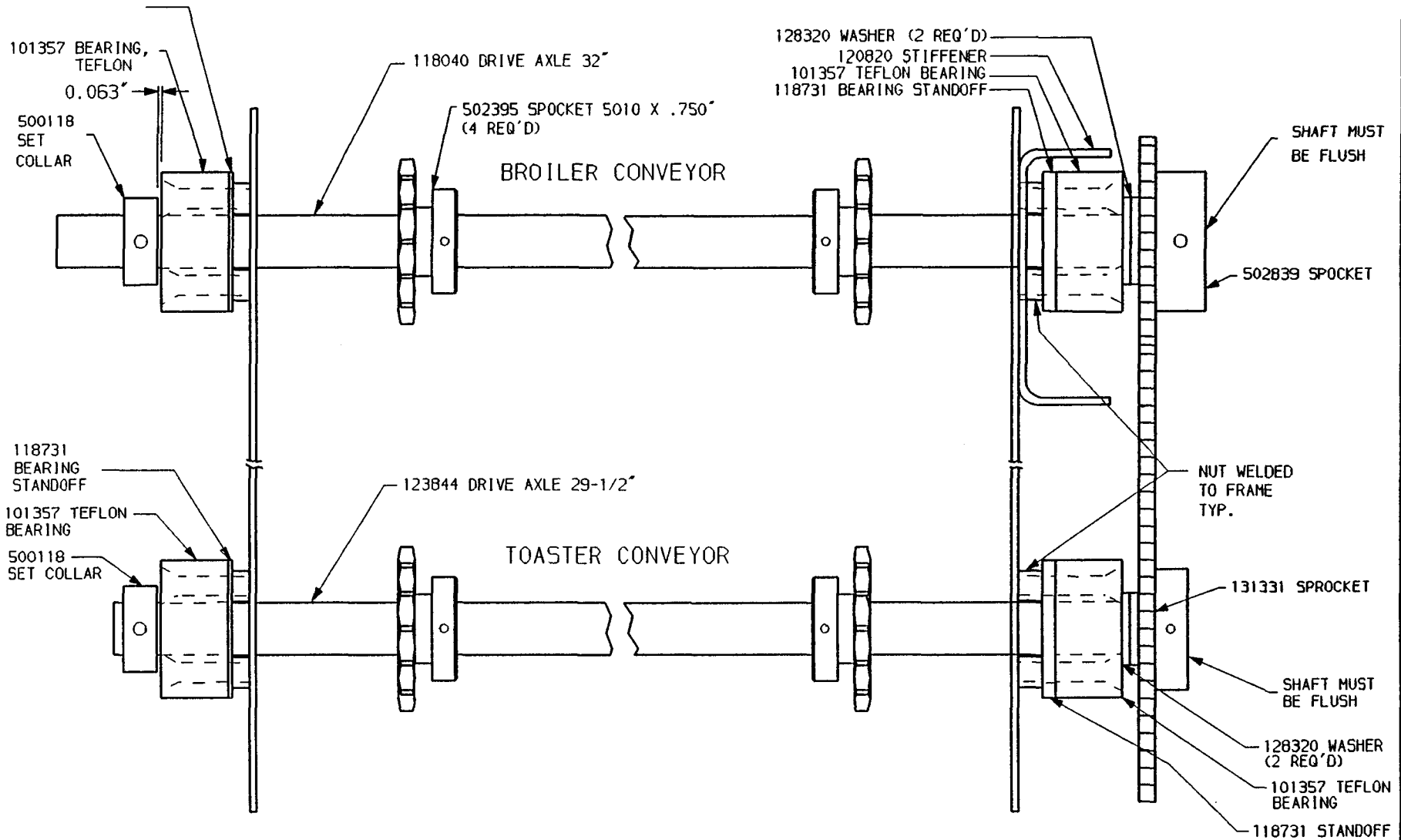
PLATEN ASBY LEFT #124655

FIGURE 18



PLATEN ASBY RIGHT #124656

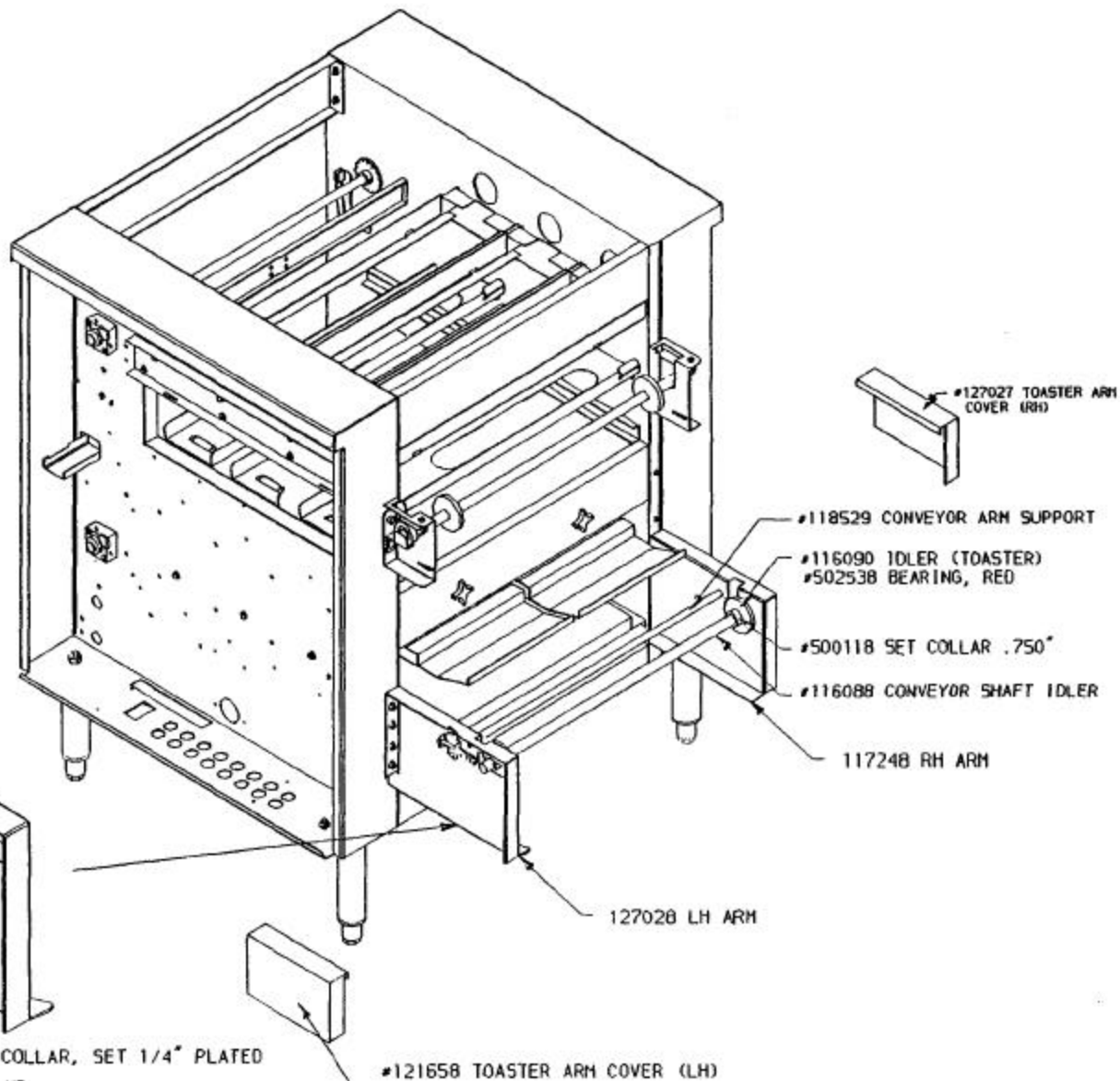
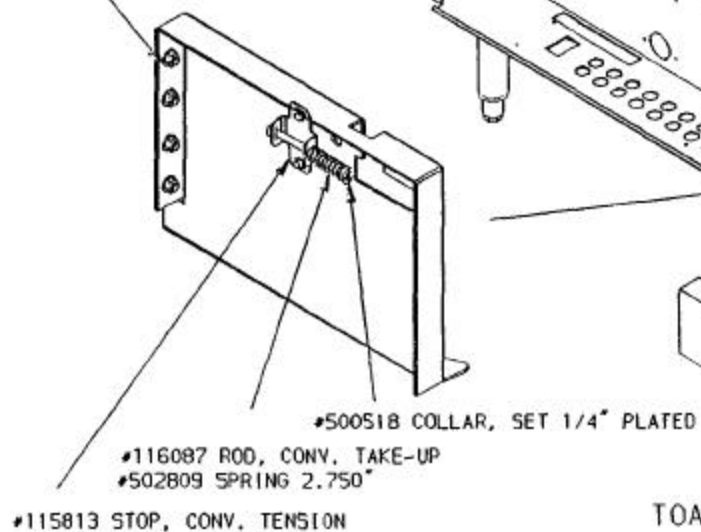
FIGURE 19



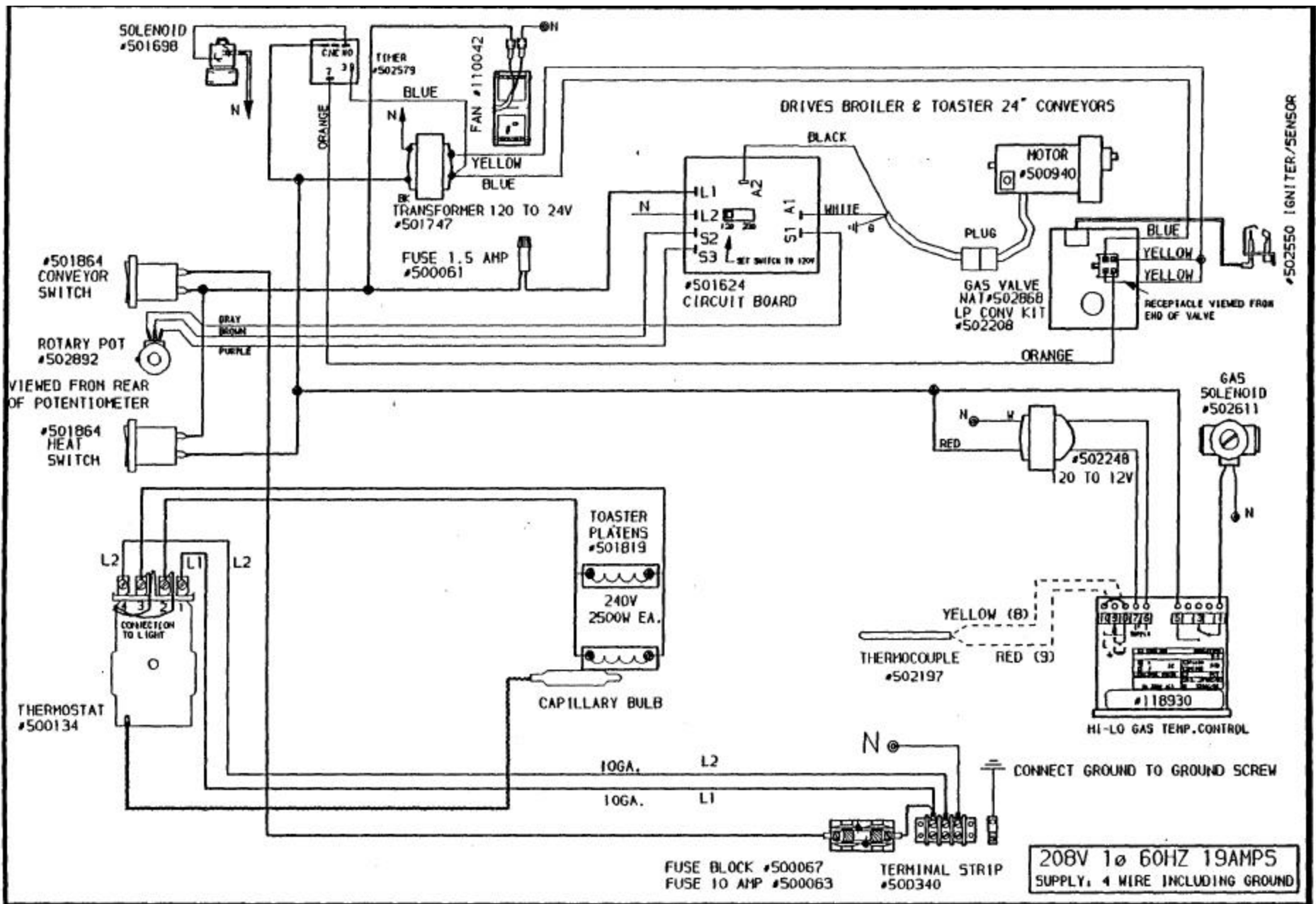
CONVEYOR IDLER ASBY #124584 (AC2B)

FIGURE 20

- MOUNTING HARDWARE**  
 (8) 502003 1/4"-20 X .750 BOLTS  
 (8) 501348 1/4"-20 NUTS  
 (8) 501555 1/4" LOCK WASHERS  
 (8) 501548 1/4" FLAT WASHERS



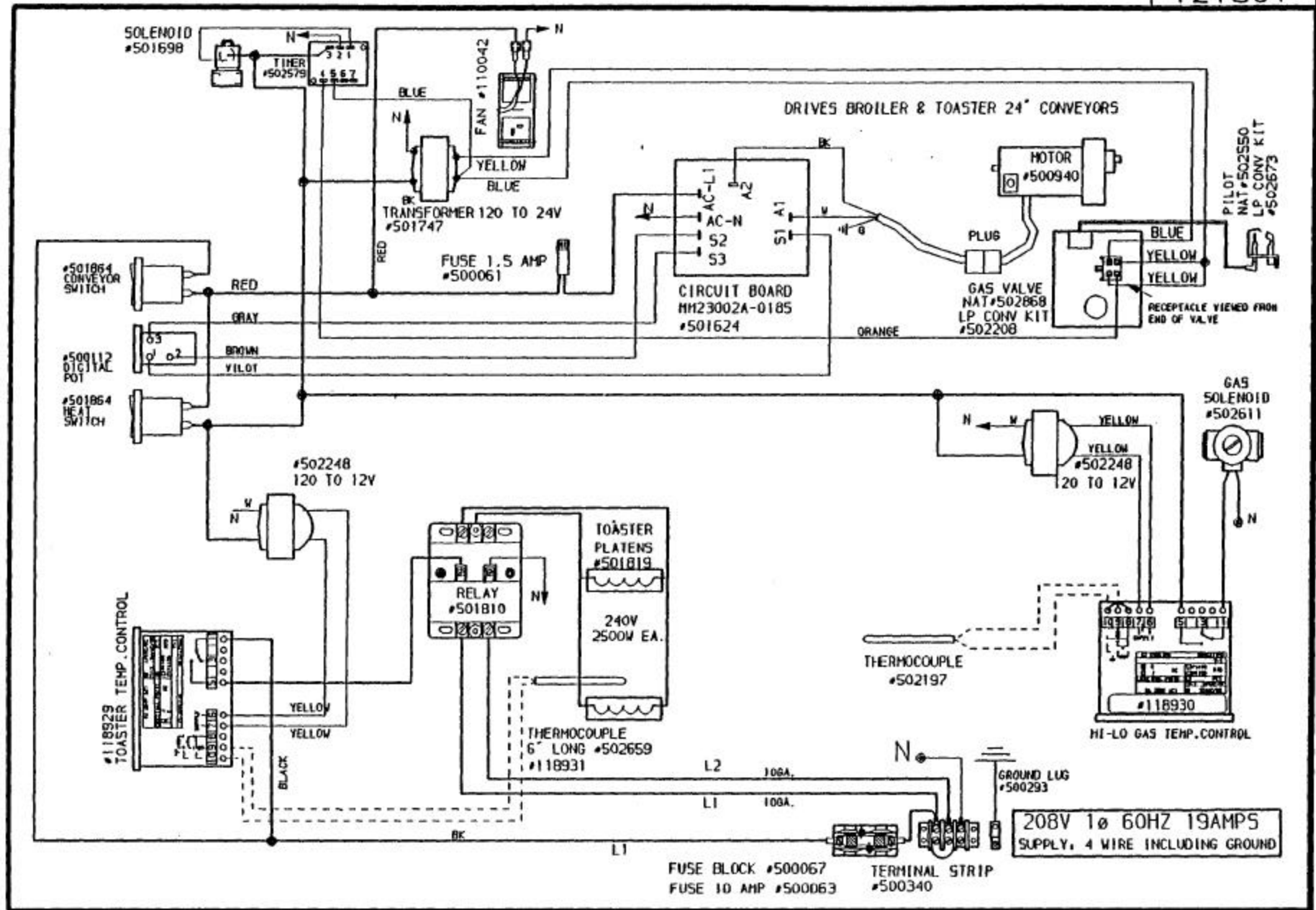
TOASTER LOADING ARM ASSEMBLY  
**FIGURE 21**



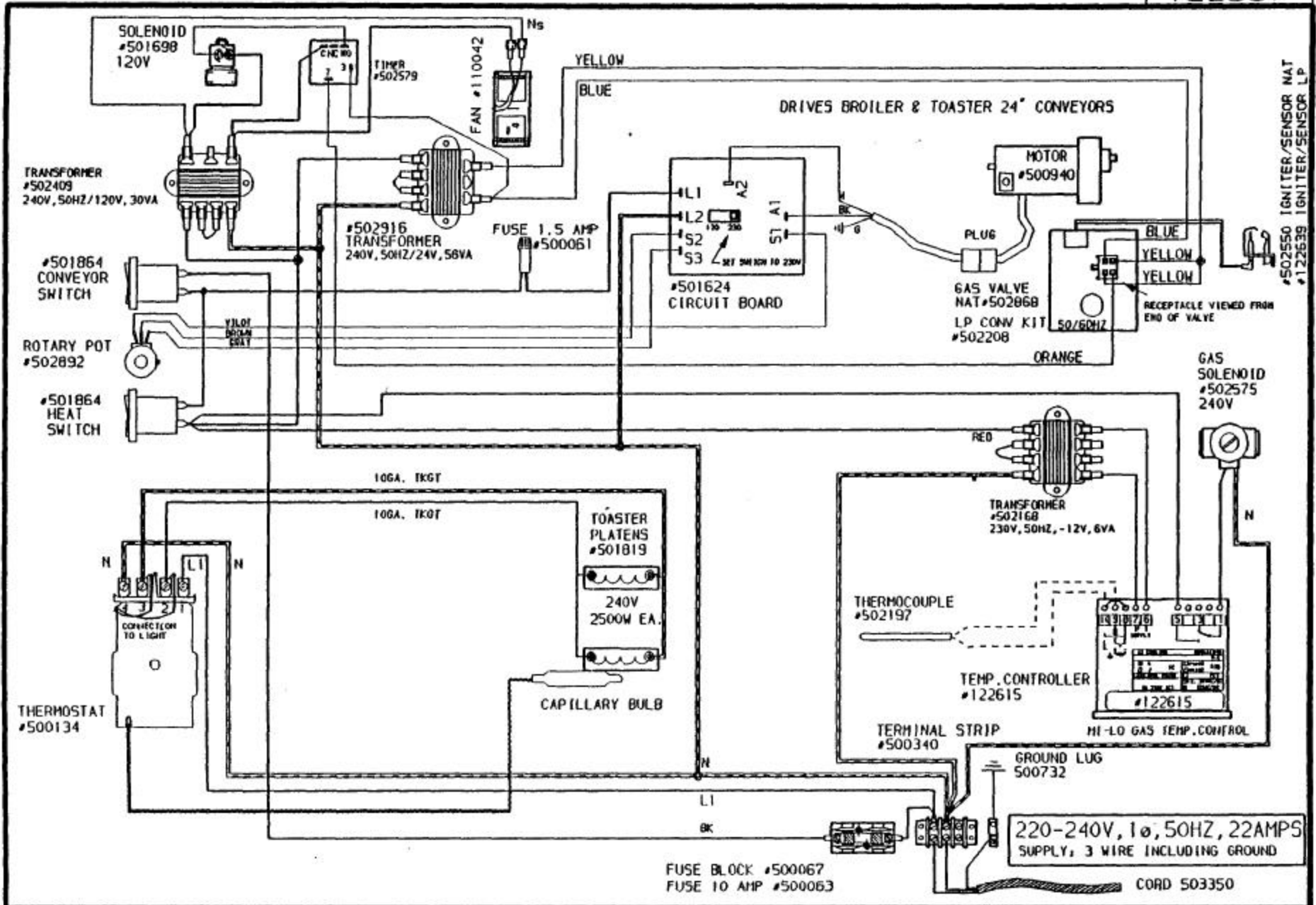
REV	DATE	DESCRIPTION	JR	19-APR-94	SCHEMATIC, 2424G, 208V, 1PH, 60Hz		
10	11-AUG-97	#502868 WAS #502549 (TS) CORRECTED CIRCUIT BOARD SLIDE SWITCH POSITION TO 120V (CP)	REFERENCE		SIZE	PROJ. CODE:	DWG NO.
11	15-DEC-97				A		121664
					SCALE	1:1 NTS IMAGE MAY BE REDUCED	
					AC2B, AC2J		

PLOTTED 01-APR-98 BY C. P.

Copyright © 1994 Marshall Air Systems, Inc. All rights reserved.

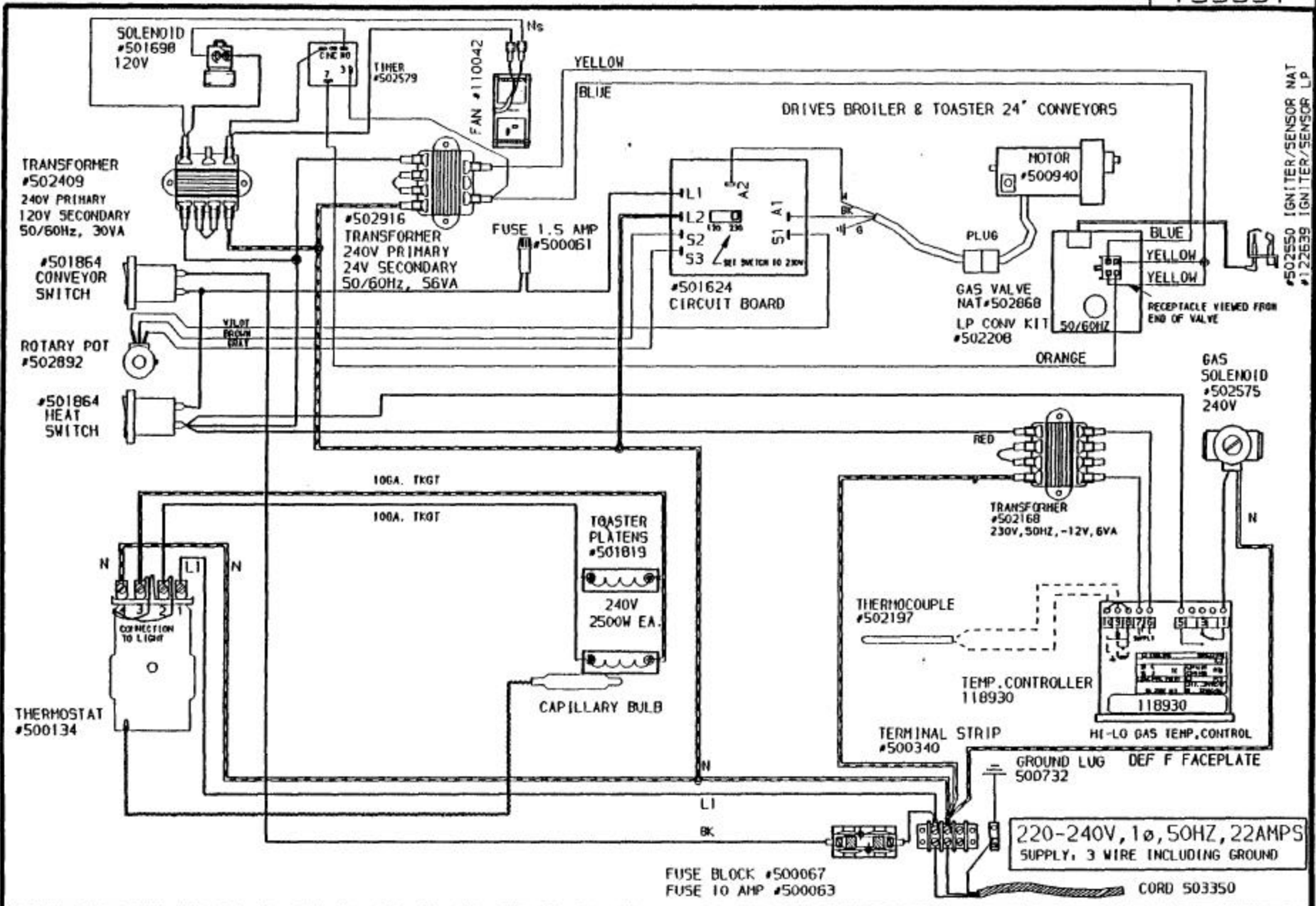


REV	DATE	DESCRIPTION	R.S.	19-APR-94	SCHEMATIC, 2424G, 208V, 1PH, 60Hz			
1	03-JUN-94	REMOVE CIRCUIT BREAKER	REFERENCE		SIZE	PROJ. CODE: AC2D	DWG NO.	REV
2	17-JUN-94	ADD 1.5 AMP FUSE.			A		121801	4
3	04-OCT-94	CH. WIRING LAYOUT. (MC/JR)			SCALE 1:1 NTS IMAGE MAY BE REDUCED			
4	11-AUG-97	#502868 WAS #502549 (TS)			FIGURE 12			



#502550 IGNITER/SENSOR NAT  
#122638 IGNITER/SENSOR LP

REV	DATE	DESCRIPTION	JR	21-SEP-94	SCHEMATIC, 2424G 220-240V, 1 PH, 50 HZ				
3	23-FEB-95	ADDED LP IGNITER/SENSOR	REFERENCE		SIZE	PROJ. CODE: AC2BINTL	DWG NO.	REV	
4	16-MAR-95	DELETED NEUTRAL WIRE (15)			A		122597	6	
5	11-DEC-96	CHG GND LUG FROM 500340 TO 500732.			SCALE	1:1 NTS	IMAGE MAY BE REDUCED		
6	30-JUL-97	ADDED COPR P/N 502550 (CP) ADDED VOLTAGE RATINGS TO GAS SOLENOIDS (CP)							



#502550 IGNITER/SENSOR NAT  
 #122639 IGNITER/SENSOR LP

REV	DATE	DESCRIPTION	C.P.	06-NOV-97	SCHEMATIC, 2424G, 220/240V W/ DEG F CONTROL		
1	18-NOV-97	UPDATE TRANSFORMER DESC FROM 50 TO 50/60 Hz [CP]	REFERENCE		SIZE A	PROJ. CODE AC2B	DWG NO. 133551
					SCALE 1:1 NTS	IMAGE MAY BE REDUCED	

01-APR-98 BY C. P.