

# OWNER'S MANUAL

## MODEL RR5-48.5 SERIES FRY FOOD DUMP STATION MODEL RR5-42 SERIES FRY FOOD DUMP STATION



RR5-48.5LT Shown

Supplier Name: **MARSHALL AIR SYSTEMS, INC.**  
Address: 419 Peachtree Drive South  
Charlotte, NC 28217

Model #: \_\_\_\_\_  
Serial #: \_\_\_\_\_  
Date Received: \_\_\_\_\_  
Date Installed: \_\_\_\_\_  
Telephone #: 704-525-6230  
Fax #: 704-525-6229  
Service Referral #: 800-722-3474  
Local Service: \_\_\_\_\_  
Local Service #: \_\_\_\_\_

### PRODUCT DESCRIPTION

The Model RR5-48.5 series and RR5-42 series dump station features Marshall's own ThermoGlo™ heating technology. Heat radiates from every square inch of the upper flat plate heating surface. This provides for uniform holding temperature and improved moisture retention in the food. The ThermoGlo™ heating system replaces heat lamps and lamp sockets with a robust unbreakable design that blocks grease vapors from entering the wiring compartment. It is very easy to keep clean.

The RR5-48.5 series station is provided with (3) 4" product organizers, (1) 5" product organizer, (1) 22" dump pan and divider, two row bag holding rack and tong and scoop holders.

The RR5-48.5PT (Pass Through) series station is the same as the RR5-48.5 series station except that the RR5-48.5PT station is provided with heat guards, tong holders, scoop holders and doors at both the front and back of the station. The RR5-48.5PT also does not have side glass or mirror.

The RR5-42 series station is provided with (3) 3.5" product organizers, (1) 4" product organizer, (1) 21" dump pan, single row bag holding rack, tong and scoop holders.

The RR5-42CAN series station is provided with (3) 4" product organizers, (1) 21" dump pan, double row bag holding rack, tong and scoop holders.

The RR5-42SNS series station is provided with (2) 3.5" product organizers, (1) 28.5" dump pan, single row bag holding rack, tong and scoop holders

The RR5-36 series station is provided with (2) 4" product organizers, (1) 21" dump pan, single row bag holding rack, tong and scoop holders.

The RR5-31.5 station is provided with (2) 3.5" product organizers, (1) 22" dump pan, tong and scoop holders.

### GENERAL SPECIFICATIONS

Model: See General Specification Chart  
Height: 59.000"  
Width: See General Specification Chart  
Depth: 32.750"  
Electrical: 208-220VAC, 50/60HZ  
220-240VAC, 50/60HZ (International units w/ no timer)  
Amps: See General Specification Chart  
Power Cord: 7FT, 3 Wire Ground NEMA-6-20P (Domestic)  
7FT, 12/3 cord no plug (International)  
Weight: See General Specification Chart  
Approvals: ETL/CETL, CE and NSF

"LT" suffix means dump left, fryers on the right  
"RT" suffix means dump right, fryers on the left

# OWNER'S MANUAL

MODEL RR5-48.5 SERIES FRY FOOD DUMP STATION  
MODEL RR5-42 SERIES FRY FOOD DUMP STATION



## FOR YOUR SAFETY

DO NOT STORE OR USE GASOLINE OR OTHER  
FLAMMABLE VAPORS OR LIQUIDS IN THE  
VICINITY OF THIS OR ANY OTHER APPLIANCE

### AVERTISSEMENT

**Ne pas entreposer ni utiliser de l'essence ni d'autres vapeurs ou liquides inflammables dans le voisinage de cet appareil, ni de tout autre appareil.**

WARNING: IMPROPER INSTALLATION, ADJUSTMENT, ALTERATION, OR MAINTENANCE CAN CAUSE PROPERTY DAMAGE, INJURY OR DEATH. READ THE INSTALLATION, OPERATION AND MAINTENANCE INSTRUCTIONS THOROUGHLY BEFORE INSTALLING OR SERVICING THIS EQUIPMENT.

**AVERTISSEMENT: Une installation, un ajustement, une altération, un service ou un entretien non conforme aux normes peut causer des dommages à la propriété, des blessures ou la mort. Lisez attentivement les directives d'installation et d'opération et d'entretien avant de faire l'installation ou l'entretien de cet équipement**

**KEEP THIS MANUAL IN A SAFE PLACE AND RETAIN FOR FUTURE USE.**

**Dump Station area must be kept free of combustible materials and the flow of ventilation air must not be obstructed. Operating personnel must not perform any maintenance or repair functions. Contact your Qualified Service Company.**

Clean station and base with a damp cloth/rag and a mild cleaner.

**DO NOT USE A GREEN SCOTCH BRITE PAD OR ANY OTHER ABRASIVE CLEANING PAD. THE BLUE SCOTCH BRITE (NO SCRATCH) IS SAFE TO USE.**

**DO NOT USE CAUSTIC CLEANING SOLUTIONS SUCH AS OVEN CLEANER. USE ONLY MILD, NON-ABRASIVE CLEANER.**

**DO NOT IMMERSE IN WATER!**

# OWNER'S MANUAL

MODEL RR5-48.5 SERIES FRY FOOD DUMP STATION  
MODEL RR5-42 SERIES FRY FOOD DUMP STATION



## TABLE OF CONTENTS

PRE- INSTALLATION.....	1
INSTALLATION .....	1
GENERAL SPECIFICATION .....	2
DAILY CHECKLIST AND CLEANING GUIDE .....	2
MONTHLY MAINTENANCE .....	3
TROUBLESHOOTING CHART .....	3-4
REPLACEMENT PARTS LIST .....	5-8

## ILLUSTRATIONS

OVERALL DIMENSIONS RR5-48.5 RR5-42 RR5-36 .....	FIGURE 1
OVERALL DIMENSIONS RR5-31.5 .....	FIGURE 1A
RR5-48.5 SERIES REPLACEMENT PARTS .....	FIGURE 2
RR5-42 SERIES REPLACEMENT PARTS .....	FIGURE 3
RR5-42CAN SERIES REPLACEMENT PARTS.....	FIGURE 3A
RR5-42SNS SERIES REPLACEMENT PARTS .....	FIGURE 4
RR5-36 SERIES REPLACEMENT PARTS .....	FIGURE 5
RR5-31 REPLACEMENT PARTS.....	FIGURE 6

## SCHEMATICS

WIRING SCHEMATIC RR5-48.5 (208-220V 1 PH).....	DWG 161438
WIRING SCHEMATIC RR5-42 (208-220V 1 PH).....	DWG 161931
WIRING SCHEMATIC RR5-42INTLCE (220-240V) .....	DWG 165569
WIRING SCHEMATIC RR5-36 (208-220V 1PH).....	DWG 165883
WIRING SCHEMATIC RR5-31.5 (208-220V 1PH) .....	DWG 166037



# OWNER'S MANUAL

MODEL RR5-48.5 SERIES FRY FOOD DUMP STATION

MODEL RR5-42 SERIES FRY FOOD DUMP STATION



## PRE-INSTALLATION

1. The Dump Station is packaged to minimize the risk of shipping damage. Immediately upon receipt, make certain to inspect the station for damage. **FILE ALL CLAIMS WITH THE FREIGHT CARRIER.**
2. Unpack the station and inspect for concealed damages. **FILE ALL CLAIMS WITH THE FREIGHT CARRIER.**

## FINAL INSTALLATION

1. Unpack station and remove all protective paper or plastic covering from metal parts.
2. Place dump station on level floor.
3. Domestic: Plug station into a receptacle. 208-220V 1 PH NEMA 6-20 plug is provided. (L1, L2, GND). Make sure timer plug is plugged into the accessory receptacle located beside the on/off switch behind left cover. The maximum voltage to be supplied to Dump Station is 220 volts. If voltage exceeds this, contact Marshall Air Systems, Inc. for a transformer to step down 240 volts to 208 volts. Part #163490.

International (INTL): Cord only is provided. Install a plug rated above the amps of the station then plug into matching receptacles.

**CAUTION: HEAT GUARD MUST BE INSTALLED ON STATION DURING OPERATION. HEAT GUARD IS REMOVABLE FOR CLEANING ONLY AND SHOULD BE PUT BACK IN PLACE IMMEDIATELY AFTER CLEANING.**

4. Place all parts onto station, (organizers, mirror, glass etc). See Figure 2 and Figure 3 for pan and timer position. If fryers are on the right of the station, then you will use the positions labeled RR5-48.5LT and RR5-42LT. If fryers are on the left of the station, then you will use the positions labeled RR5-48.5RT and RR5-42RT. Note: the bulbs are shipped loose and will need to be installed.
5. There are 2 different covers shipped with each holding station. These covers are the joint covers to bridge the gap between the side of the holding station and the fryers beside the cabinet. 1 cover is labeled with the letters "HP". Use this cover if you have Henny Penny fryers. The other cover is labeled with "F". Use this cover if you have Frymaster fryers. See Figure 2 for reference and part numbers.
6. If the pan layout and timer needs to be reversed, all parts, including the timer are able to be reversed. See the Programming Guide and Operation Manual for instructions. Note for "INTLCE" models there is no timer.
7. Installation shall comply with the latest version of the National Electrical Code, NFPA 70.

# OWNER'S MANUAL

MODEL RR5-48.5 SERIES FRY FOOD DUMP STATION  
MODEL RR5-42 SERIES FRY FOOD DUMP STATION



## GENERAL SPECIFICATIONS:

MODEL	WIDTH (IN)	AMPS	WEIGHT (LBS)
RR5-31.5	31.500	14.8	276
RR5-36 series	36.000	10.5	300
RR5-42 series	42.000	13-13.5	350
RR5-42CAN	42.000	13	350
RR5-42LTNTINLCE	42.000	9	350
RR5-42RTNTINTLCE	42.000	9	350
RR5-42SNS	42.000	13-13.5	350
RR5-48.5 series	48.625	14.8-15.5	400
RR5-48.5CT	48.625	14.8-15.5	400
RR5-48.5LTNTINTLCE	48.625	11.25	400
RR5-48.5PT	48.625	14.8-15.5	400
RR5-48.5RTINTLCE	48.625	11.25	400

## DAILY CHECKLIST AND CLEANING GUIDE

### TO USE THE HEAT STATION

1. Turn on the power switch that is located behind the left door. See Figure 1.
2. The lights indicate power is on.
3. The station is ready to use after a 30-minute preheat period.
4. Refer to the Programming Guide and Operation Manual for instructions.

**NOTE: IT IS NORMAL TO SEE SMOKE COMING FROM HEATER AFTER INITIAL STARTUP. THIS IS CAUSED BY THE INSULATION CURING.**

### CLEANING CHECKLIST

1. Turn off the station and allow it to cool for 30 minutes.
2. Pans, bag holder, grease catch should be removed, washed, rinsed and sanitized. **DO NOT USE CAUSTIC CLEANING SOLUTIONS!**
3. Clean station and base with a damp cloth/rag and a mild cleaner.

**DO NOT USE A GREEN SCOTCH BRITE PAD OR ANY OTHER ABRASIVE CLEANING PAD. THE BLUE SCOTCH BRITE (NO SCRATCH) IS SAFE TO USE.**

**DO NOT USE CAUSTIC CLEANING SOLUTIONS SUCH AS OVEN CLEANER. USE ONLY MILD, NON-ABRASIVE CLEANER.**

**DO NOT IMMERSE IN WATER!**

4. Allow sufficient drying time before attempting to use.

# OWNER'S MANUAL

MODEL RR5-48.5 SERIES FRY FOOD DUMP STATION  
MODEL RR5-42 SERIES FRY FOOD DUMP STATION



## MONTHLY MAINTENANCE

Follow the daily cleaning checklist; there are no periodic adjustments. There are no user-replacement items at this time.

## TROUBLE SHOOTING CHART

Before trouble shooting is started: check unit is plugged in, check for tripped circuit breaker and check that power switch on.

**\*\* DISASSEMBLING HEATER VOIDS WARRANTY \*\***

PROBLEM	POSSIBLE CAUSE	SOLUTION
<b>1. NO HEAT/NO LIGHT</b>  <b>NO HEAT</b>	A. UNPLUGGED B. CIRCUIT BREAKER IS TRIPPED C. CORD/PLUG DEFECTIVE D. DEFECTIVE POWER SWITCH E. DEFECTIVE HEATER	A. PLUG IN B. RESET BREAKER – CALL AN ELECTRICIAN IF TRIPPED TWICE C. REPLACE CORD/PLUG D. REPLACE SWITCH E. CALL MARSHALL CUSTOMER SERVICE 800-722-3474
<b>2. HEAT/NO LIGHT</b>	A. BURNED OUT LIGHTS  B. BULBS LOOSE C. SLIGHT CORROSION ON CONTACTS OF LIGHT SOCKETS.	A. REPLACE SOCKET OR LIGHTS. <b>**IMPORTANT: DUE TO THE STATION BEING 208 VOLTS, IF 1 BULB BURNS OUT, THE OTHER BULB WILL NOT LIGHT. IN OTHER WORDS, ONLY 1 BULB IS BURNED OUT. CHECK THIS BY VISIBLY LOOKING FOR THE BROKEN FILAMENT AND DISCOLORATION OF BULB OR SHAKING BULB AND THE BROKEN FILAMENT WILL RATTLE.**</b> B. TIGHTEN BULBS C. BE SURE TO UNPLUG POWER CORD. SCRAPE CENTER CONTACT IN SOCKET TO REMOVE CORROSION, WITH A SHARP INSTRUMENT SUCH AS A SCREWDRIVER TIP.

Service must be performed by a Qualified Service Company. The term "Qualified Service Company" means any individual, firm, corporation or company which is either engaged in and is responsible for the installation or replacement of electrical components and wiring for commercial kitchen appliances.

# OWNER'S MANUAL

MODEL RR5-48.5 SERIES FRY FOOD DUMP STATION

MODEL RR5-42 SERIES FRY FOOD DUMP STATION



PROBLEM	POSSIBLE CAUSE	SOLUTION
<b>3. NO HEAT AND LIGHTS WORK</b>	A. DEFECTIVE HEAT	A. CALL MARSHALL CUSTOMER SERVICE 800-722-3474
<b>4. THE TIMER IS NOT TURNING ON</b>	A. BLOWN FUSE B. TIMER NOT PLUGGED IN C. TIMER CORD "JACK" CONNECTOR D. BAD POWER SUPPLY AND/OR BAD TRANSFORMER E. BAD RECEPTACLE F. BAD TIMER ON/OFF SWITCH G. BAD TRANSFORMER	A. CHECK AND REPLACE WITH 2 AMP FUSE (SEE FIG. 1) B. PLUG THE POWER CORD PLUG INTO THE RECEPTACLE (SEE FIG 1) C. FIND THE "JACK" PLUG WHERE TIMER POWER CORD PLUGS INTO "JACK" OF TIMER EXTENSION CORD. MAKE SURE IT IS PLUGGED INTO AND TIGHT. D. SEE DETAILED INSTRUCTIONS BELOW. E. CHECK FOR 120V AT RECEPTACLE. REPLACE IF REQUIRED F. REPLACE SWITCH G. CHECK FOR 208 VOLTS @ INPUT. CHECK FOR 120 VOLTS AT OUTPUT IF NOT 120 VOLT OUT, REPLACE

IF A, B, C has been checked, and then the issue could be the timer power supply (power plug) and/or transformer.

A few simple steps to determine:

1. Plug the timer into a normal wall outlet. If the timer works, then the problem is with the receptacle or transformer. If it doesn't work, then a new power supply cord is required. (#504381)
2. Plug a small device such as a phone charger or desk lamp into the receptacle for the timer. If they don't work, it is more likely the transformer has failed and should be replaced. (#502409) Receptacle is usually good unless there is visible damage shown on outside or wires.

# OWNER'S MANUAL

MODEL RR5-48.5 SERIES FRY FOOD DUMP STATION

MODEL RR5-42 SERIES FRY FOOD DUMP STATION



## REPLACEMENT PARTS LIST

WARNING: USE OF NON-MARSHALL APPROVED REPLACEMENT PARTS WILL VOID WARRANTY.

PART NO	DESCRIPTION	QTY	FIGURE
163961	BACK COVER KIT, RR5-48.5 (OPTIONAL)	1	NOT SHOWN
163963	BACK COVER KIT, RR5-42 (OPTIONAL)	1	NOT SHOWN
166315	BLANKET, HEAT WELL BTM 185W 208V (RR5-31.5 ONLY)	1	SCHEMATIC
165882	BLANKET, HEAT WELL BTM 195W 208V (RR5-36 ONLY)	1	SCHEMATIC
504369	BLANKET, HEAT WELL BTM 300W 208V (RR5-48.5 ONLY)	1	SCHEMATIC
504376	BLANKET, HEAT WELL BTM 300W 208V (RR5-42 ONLY)	1	SCHEMATIC
165562	BLANKET, HEAT WELL BTM 260W 240V (RR5-42INTLCE ONLY)	1	SCHEMATIC
504140**	BULB, COATED 60W**	4	SCHEMATIC
504381	CABLE, TIMER POWER EXTENSION	1	PROGRAMMING GUIDE
501629	CASTER, 4" NO LOCK	2	2,3,3A,4,5,6
501630	CASTER, 4" WITH LOCK	2	2,3,3A,4,5,6
161764	CLIP, SIDE GLASS MOUNTING ASBY	1	2,3,3A,4,5
504011	CORD, 12/3 NEMA 6-20P FOR DUMP STATION	1	SCHEMATIC
504237	CORD, 12/3 INTL/INTLCE	1	SCHEMATIC
504373	CORD, TIMER POWER	1	PROGRAMMING GUIDE
170045	COVER, DUMP STATION AND FRYER, HENNY PENNY	1	2,3,3A
170046	COVER, DUMP STATION AND FRYER, FRYMASTER	1	2,3,3A
161320	DIVIDER, DUMP PAN	1	2,3,3A,6

**\*\*IMPORTANT: DUE TO THE STATION BEING 208-220 OR 240 VOLTS, IF 1 BULB OF THE PAIR BURNS OUT, THE OTHER WILL NOT LIGHT. IN OTHER WORDS, ONLY 1 BULB IS BURNED OUT. CHECK THIS BY VISIBLY LOOKING FOR THE BROKEN FILAMENT AND DISCOLORATION OF BULB OR SHAKING BULB AND THE BROKEN FILAMENT WILL RATTLE.**

# OWNER'S MANUAL

MODEL RR5-48.5 SERIES FRY FOOD DUMP STATION  
 MODEL RR5-42 SERIES FRY FOOD DUMP STATION



PART NO	DESCRIPTION	QTY	FIGURE
161320	DIVIDER, DUMP PAN (RR5-42SNS AND RR5-36 ONLY)	2	4,5
165168	DIVIDER, DUMP PAN (RR5-48.5PT ONLY)	1	2
161662	DOOR, LEFT HAND ASBY (RR5-48.5 ONLY)	1	2
161918	DOOR, LEFT HAND ASBY (RR5-42, RR5-42SNS ONLY)	1	3,3A,4
165873	DOOR, LEFT HAND ASBY (RR5-36 ONLY)	1	5
161663	DOOR, RIGHT HAND ASBY (RR5-48.5 ONLY)	1	2
161919	DOOR, RIGHT HAND ASBY (RR5-42, RR5-42SNS ONLY)	1	3,3A,4
165874	DOOR, RIGHT HAND ASBY (RR5-36 ONLY)	1	5
500333	FUSE 2A AGC	1	1, SCHEMATIC
500068	FUSE HOLDER	1	1, SCHEMATIC
169035	GLASS, SIDE REMOVABLE	1	2,3,3A,4,5
162009	GUARD, FRONT HEAT ASBY (RR5-42 ONLY)	1	3,3A,4
165868	GUARD, FRONT HEAT ASBY (RR5-36 ONLY)	1	5
166018	GUARD, FRONT HEAT ASBY (RR5-31.5 ONLY)	1	6
161339	GUARD, HEAT ASBY (RR5-48.5 ONLY)	1	2
161428	HOLDER, BAG DUAL ROW (RR5-48.5 ONLY)	1	2,3A
162004	HOLDER, BAG SINGLE ROW (RR5-42, RR5-42SNS AND RR5-36 ONLY)	1	3,4,5
166784	HOLDER, BAGGING SCOOP W/ BOTTOM	1	2,3,4,5,6
161343	HOLDER, TONG (S/N 31999 AND BEFORE)	1	2,3
162838	HOLDER, TONG (S/N 32000 AND AFTER)	1	2,3,3A,4,5,6
501865	LAMP HOLDER (SOCKET)	4	SCHEMATIC
165878	MIRROR ASBY (RR5-36 ONLY)	1	5
166031	MIRROR ASBY (RR5-31.5 ONLY)	1	6

# OWNER'S MANUAL

MODEL RR5-48.5 SERIES FRY FOOD DUMP STATION  
 MODEL RR5-42 SERIES FRY FOOD DUMP STATION



PART NO	DESCRIPTION	QTY	FIGURE
169037	MIRROR, REAR REMOVABLE (RR5-48.5 ONLY)	1	2
169036	MIRROR REAR REMOVABLE (RR5-42, RR5-42SNS ONLY)	1	3,3A,4
161325	ORGANIZER, 5" PRODUCT ASBY (RR5-48.5 ONLY)	1	2
162007	ORGANIZER, 3.5" PRODUCT ASBY (RR5-42 ONLY)	3	3
162007	ORGANIZER, 3.5" PRODUCT ASBY (RR5-42SNS AND RR5-31.5 ONLY)	2	4,6
161432	ORGANIZER, 4" PRODUCT ASBY (RR5-42 ONLY)	1	3,3A
161432	ORGANIZER, 4" PRODUCT ASBY (RR5-48.5 ONLY)	3	2
161432	ORGANIZER, 4" PRODUCT ASBY (RR5-36 ONLY)	2	5
161926	PAN, DUMP 21" (RR5-42 ONLY)	1	3,3A
161322	PAN, DUMP 22" (RR5-48.5, RR5-31.5 RR5-36 ONLY)	1	2,5,6
163010	PAN, DUMP 28.5" (RR5-42SNS ONLY)	1	4
165166	PAN, DUMP 22" (RR5-48.5PT ONLY)	1	2
161402	PAN, GREASE CATCH	1	2,3,3A,4
501968	RECEPTACLE	1	1, SCHEMATIC
500885	SWITCH, ON/OFF MAIN DUMP STATION	1	1, SCHEMATIC
502425	SWITCH, TIMER ONLY POWER	1	PROGRAMMING GUIDE
161907	THERMOGLO, 8X12 525W 208-220V (RR5-48.5 ONLY)	1	SCHEMATIC
161449-208	THERMOGLO, 10X36 1750W 208-220V (NOT INTL, INTLCE)	1	SCHEMATIC
161449-240	THERMOGLO, 10X36 1750W 220-240V (INTL, INTLCE)	1	SCHEMATIC
161785LT *	TIMER, DUMP STATION LEFT 10 CHANNEL	1	2,3,3A,4,5
161785RT *	TIMER, DUMP STATION RIGHT 10 CHANNEL	1	2,3,3A

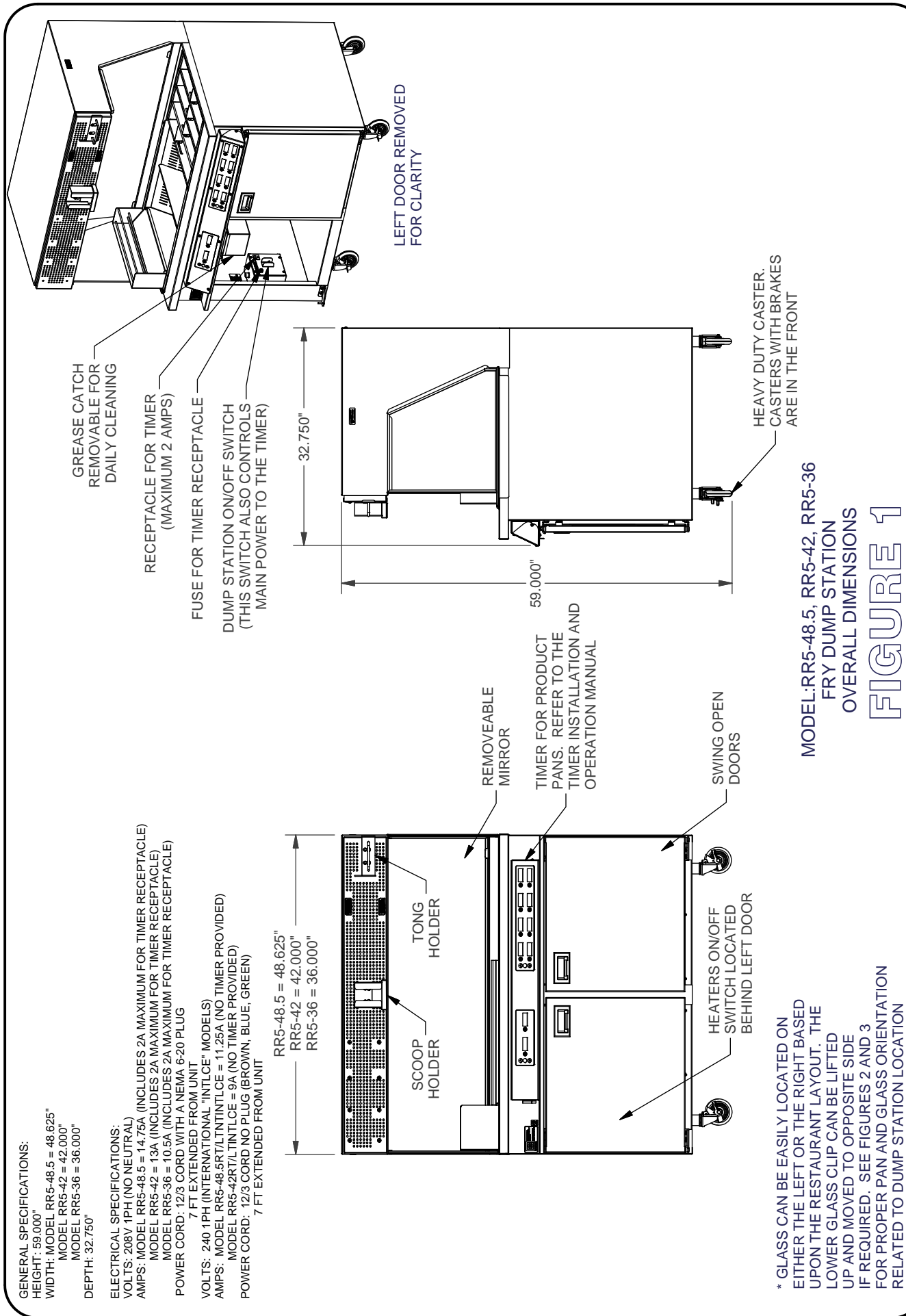
\* Timer not provided with Models RR5-48.5LTNTINTLCE, RR5-48.5RTNTINTLCE, RR5-42LTNTINTLCE and RR5-42RTNTINTLCE.

# OWNER'S MANUAL

MODEL RR5-48.5 SERIES FRY FOOD DUMP STATION  
MODEL RR5-42 SERIES FRY FOOD DUMP STATION



PART NO	DESCRIPTION	QTY	FIGURE
166030LT	TIMER, DUMP STATION LEFT 10 CHANNEL (RR5-31.5 ONLY)	1	6
162257	TIMER, 2 DISPLAY DUMP LEFT RR5-48.5LT RR5-42LT	1	PROGRAMMING GUIDE
162258	TIMER, 2 DISPLAY DUMP RIGHT RR5-48.5RT RR5-42RT	1	PROGRAMMING GUIDE
162259	TIMER, 8 DISPLAY DUMP LEFT RR5-48.5LT RR5-42LT	1	PROGRAMMING GUIDE
162260	TIMER, 8 DISPLAY DUMP RIGHT RR5-48.5RT RR5-42RT	1	PROGRAMMING GUIDE
502409	TRANSFORMER 120V SECONDARY	1	SCHEMATIC
163490	TRANSFORMER KIT, 240 TO 208V FOR INCOMING POWER	1	NOT SHOWN
164660	WIRE HARNESS, 10 CHANNEL TIMER REPLACEMENT	1	NOT SHOWN
165120	WIRE SET, THERMOGLO™ LIGHTS REPLACEMENT	1	NOT SHOWN



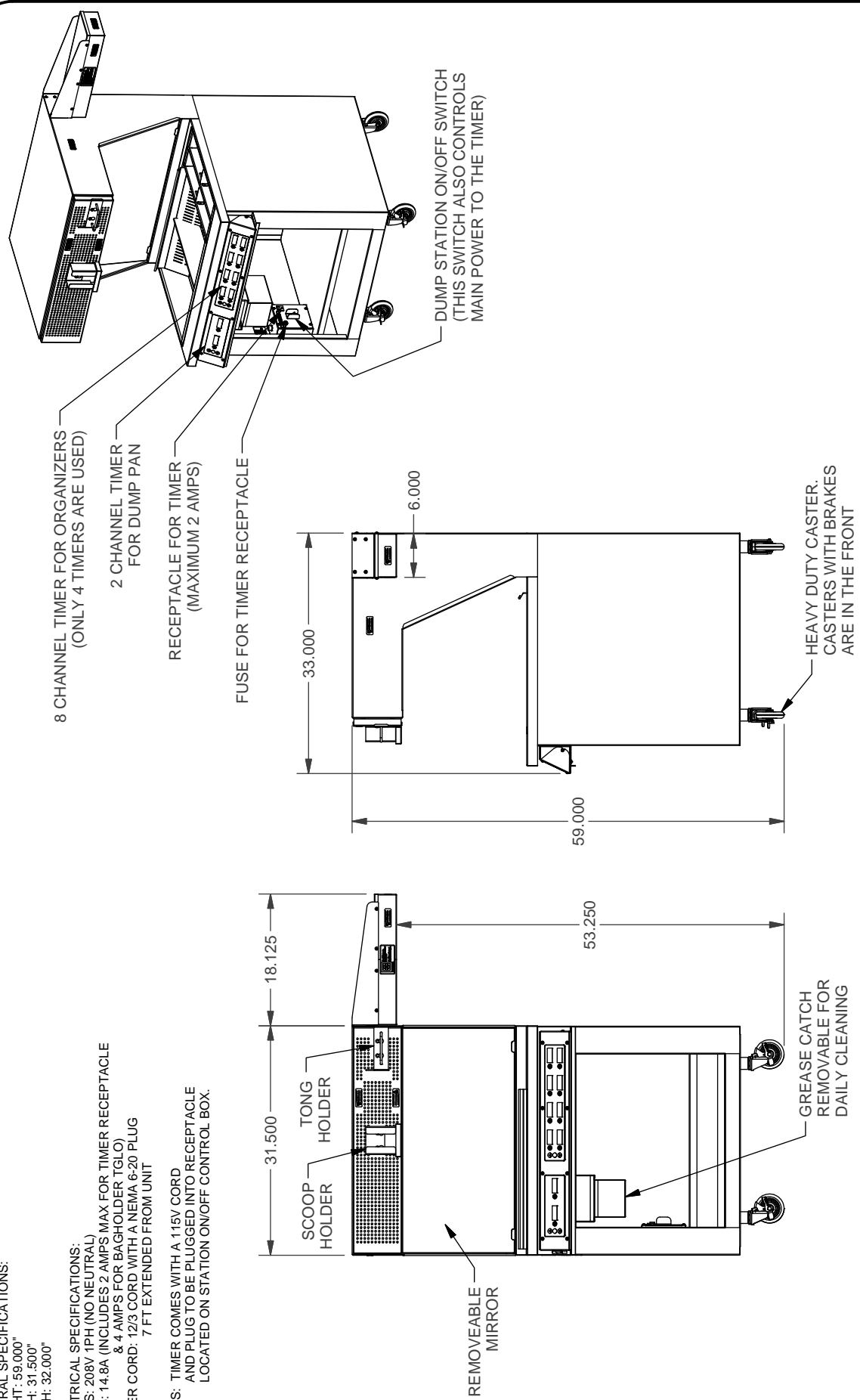
MODEL:RR5-48.5, RR5-42, RR5-36  
FRY DUMP STATION  
OVERALL DIMENSIONS  
**FIGURE 1**

**GENERAL SPECIFICATIONS:**

HEIGHT: 59.000"  
 WIDTH: 31.500"  
 DEPTH: 32.000"

**ELECTRICAL SPECIFICATIONS:**  
 VOLTS: 208V 1PH (NO NEUTRAL)  
 AMPS: 14.8A (INCLUDES 2 AMPS MAX FOR TIMER RECEPTACLE & 4 AMPS FOR BAGHOLDER TGL) & 4 AMPS FOR BAGHOLDER TGL)  
 POWER CORD: 12/3 CORD WITH A NEMA 6-20 PLUG 7 FT EXTENDED FROM UNIT

**NOTES:** TIMER COMES WITH A 115V CORD AND PLUG TO BE PLUGGED INTO RECEPTACLE LOCATED ON STATION ON/OFF CONTROL BOX.



MODEL:RR5-31.5 FRY DUMP STATION  
 OVERALL DIMENSIONS

FIGURE 1A

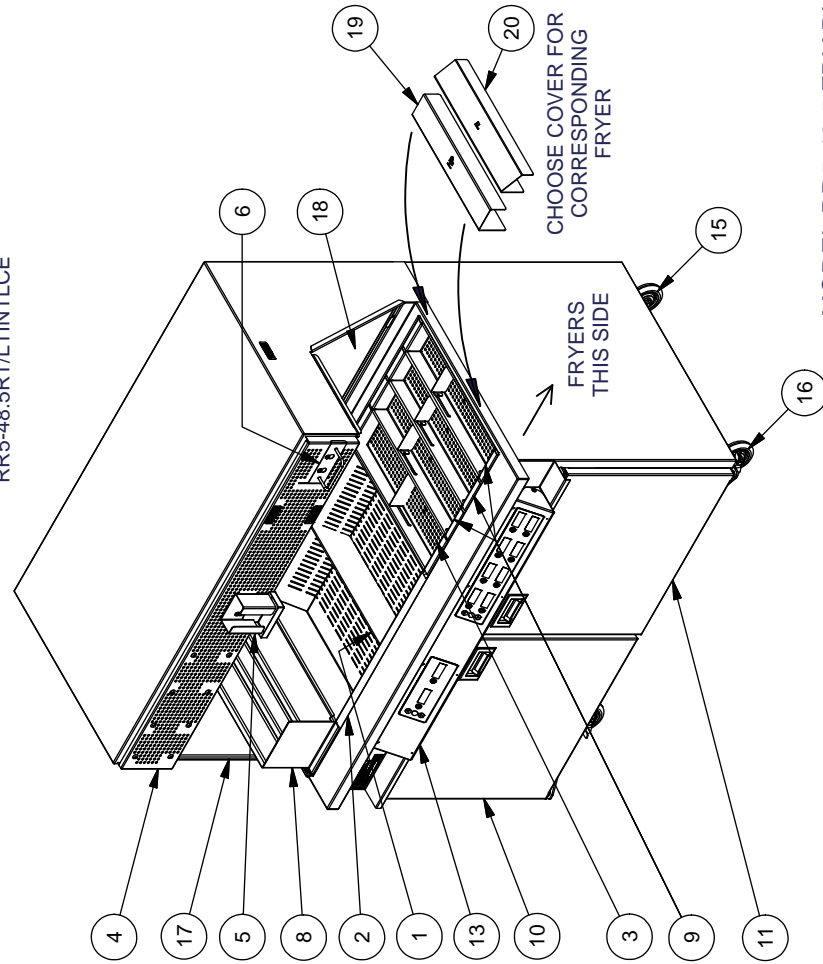
Parts List

ITEM	PART NO.	DESCRIPTION	QTY
1	161320	DIVIDER, DUMP PAN	1
1	165168	DIVIDER, DUMP PAN (RR5-48.5PT ONLY)	1
2	165166	DUMP PAN, 22" WIDE (RR5-48.5PT ONLY)	1
2	161322	DUMP PAN, 22" WIDE	1
3	161325	BASKET, 5" PRODUCT ORGANIZER	1
4	161339	GUARD, HEAT ASBY	1
5	166784	HOLDER, SCOOP	1
6	161343	HOLDER, TONG (S/N 31999 & BEFORE)	1
6	162838	HOLDER, TONG (S/N 32000 & AFTER)	1
7	161402	PAN, GREASE CATCH (INSIDE DOOR)	1
8	161428	BAG, HOLDER DOUBLE ROW	1

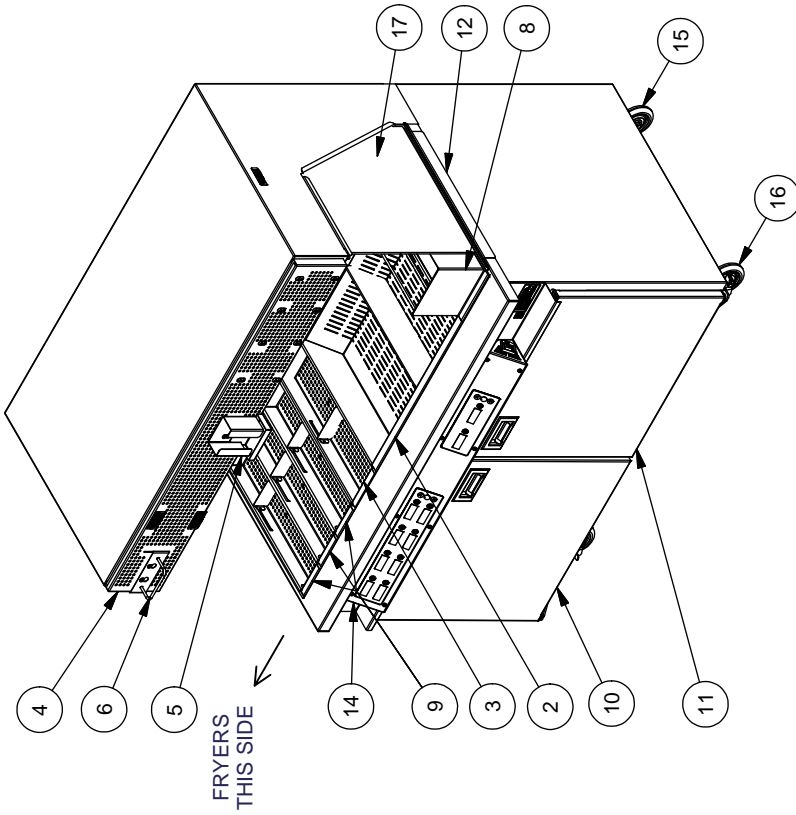
\* TIMERS NOT PROVIDED ON MODELS  
RR5-48.5RT/LTINTLCE

Parts List

ITEM	PART NO.	DESCRIPTION	QTY
9	161432	BASKET, 4" PRODUCT ORGANIZER	3
10	161662	DOOR, LEFT HAND ASBY	1
11	161663	DOOR, RIGHT HAND ASBY	1
12	161764	CLIP, SIDE GLASS MOUNTING ASBY	1
13	161785LT	TIMER, DUMP STATION 10 CHANNEL	1
14	161785RT	TIMER, DUMP STATION 10 CHANNEL	1
15	501629	CASTER, 4" NO LOCK	2
16	501630	CASTER, 4" WITH LOCK	2
17	169035	GLASS, SIDE REMOVABLE	1
18	169037	MIRROR, REAR REMOVABLE	1
19	170045	COVER, DUMP STATION AND FRYER, HENNY PENNY	1
20	170046	COVER, DUMP STATION AND FRYER, FRYMASTER	1



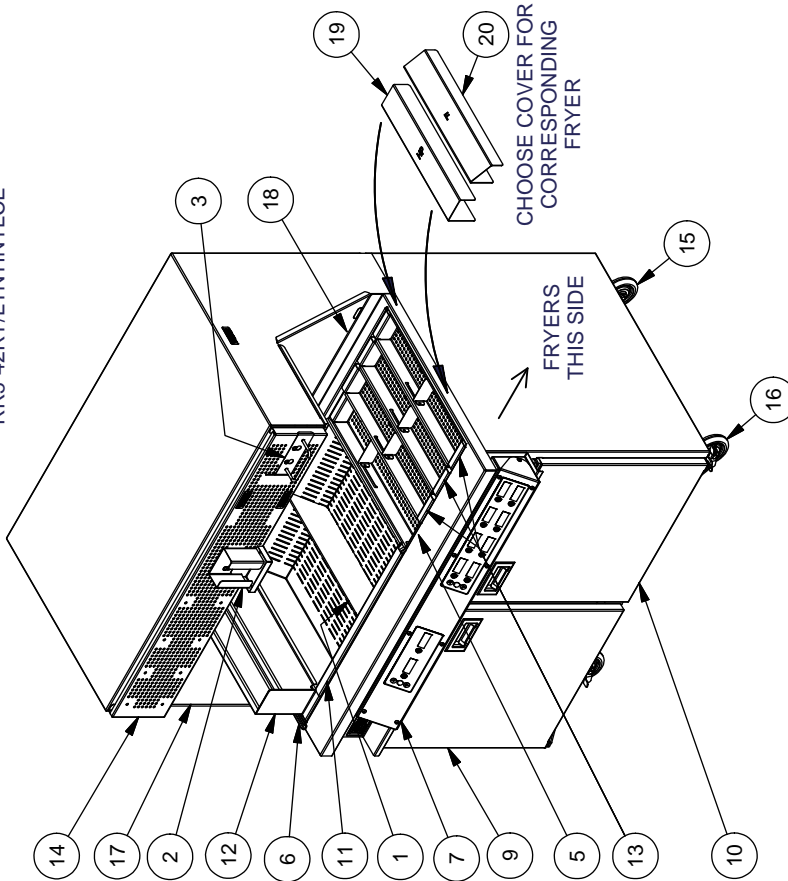
MODEL:RR5-48.5 FRY DUMP STATION  
REMOVABLE PARTS  
**FIGURE 2**  
RR5-48.5LT ARRANGEMENT  
LOCATED TO THE LEFT OF FRYER



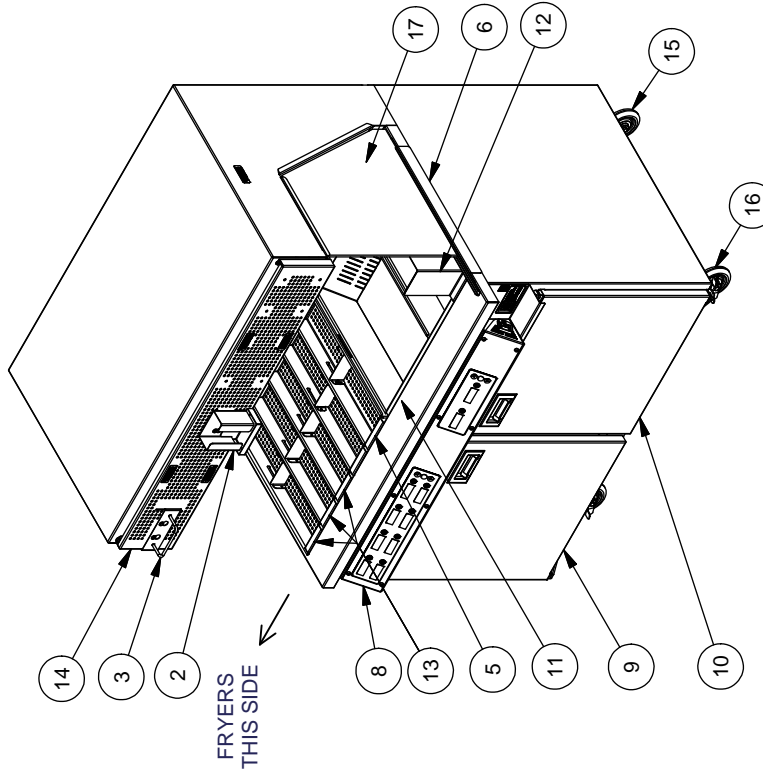
RR5-48.5RT ARRANGEMENT  
LOCATED TO THE RIGHT OF FRYER

Parts List				Parts List			
ITEM	PART NO.	DESCRIPTION	QTY	ITEM	PART NO.	DESCRIPTION	QTY
1	161320	DIVIDER, DUMP PAN	1	10	161919	DOOR, RIGHT HAND ASBY	1
2	166784	HOLDER, SCOOP	1	11	161926	DUMP PAN, 21" WIDE	1
3	162838	HOLDER, TONG (S/N 32000 & AFTER)	1	12	162004	BAG HOLDER, SINGLE ROW	1
3	161343	HOLDER, TONG (S/N 31999 & BEFORE)	1	13	162007	BASKET, 3.5" PRODUCT ORGANIZER	3
4	161402	PAN, GREASE CATCH (INSIDE DOOR)	1	14	162009	GUARD, FRONT HEAT ASBY	1
5	161432	BASKET, 4" PRODUCT ORGANIZER	1	15	501629	CASTER, 4" NO LOCK	2
6	161764	CLIP, SIDE GLASS MOUNTING ASBY	1	16	501630	CASTER, 4" WITH LOCK	2
7	161785LT*	TIMER, DUMP STATION 10 CHANNEL	1	17	169035	GLASS, SIDE REMOVABLE	1
8	161785RT*	TIMER, DUMP STATION 10 CHANNEL	1	18	169036	MIRROR, REAR REMOVABLE	1
9	161918	DOOR, LEFT HAND ASBY	1	19	170045	COVER, DUMP STATION AND FRYER, HENNY PENNY	1
				20	170046	COVER, DUMP STATION AND FRYER, FRYMASTER	1

\* TIMERS NOT PROVIDED ON MODELS  
RR5-42RT/LTNTINTLCE



**RR5-42LT ARRANGEMENT**  
LOCATED TO THE LEFT OF FRYER

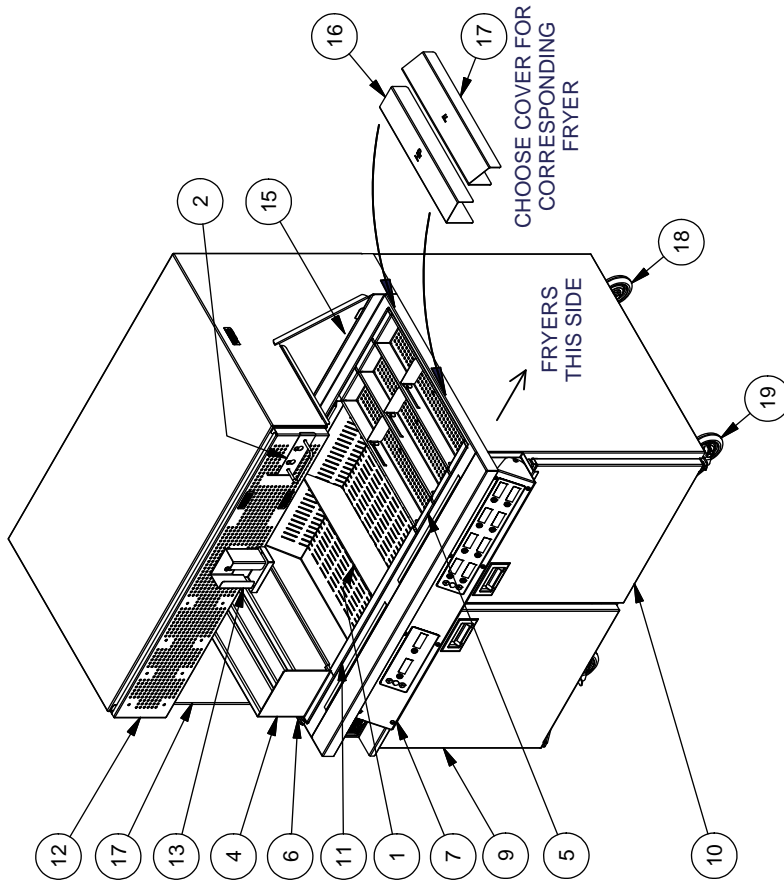


**RR5-42RT ARRANGEMENT**  
LOCATED TO THE RIGHT OF FRYER

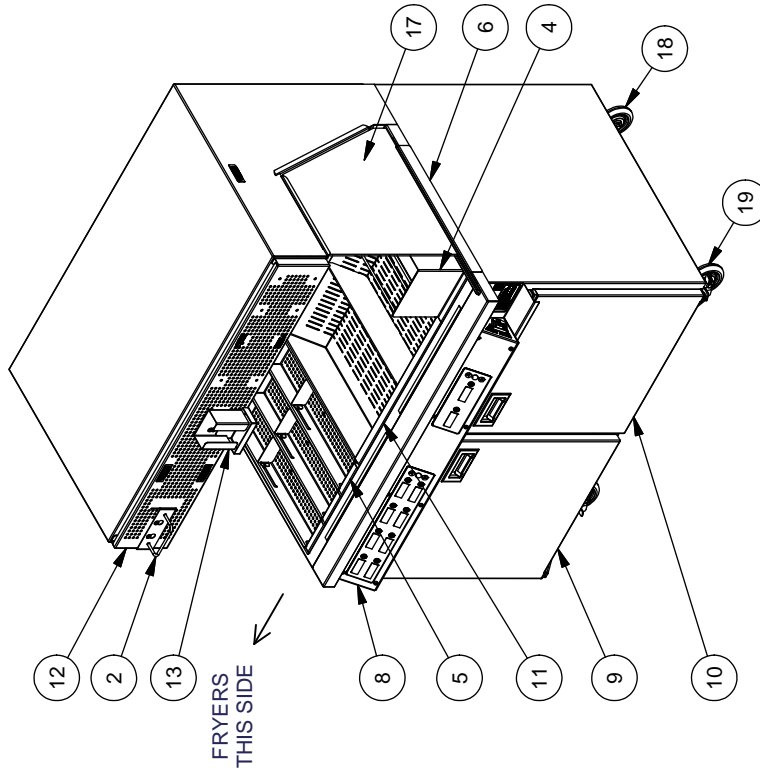
MODEL:RR5-42 FRY DUMP STATION  
REMOVABLE PARTS

# FIGURE 3

Parts List			Parts List				
ITEM	PART NO.	DESCRIPTION	QTY	ITEM	PART NO.	DESCRIPTION	QTY
1	161320	DIVIDER, DUMP PAN	1	10	161919	DOOR, RIGHT HAND ASBY	1
2	162838	HOLDER, TONG	1	11	161926	DUMP PAN, 21" WIDE	1
3	161402	PAN, GREASE CATCH (INSIDE DOOR)	1	12	162009	GUARD, FRONT HEAT ASBY	1
4	161428	BAG, HOLDER DOUBLE ROW	1	13	166784	HOLDER, SCOOP	1
5	161432	BASKET, 4" PRODUCT ORGANIZER	3	14	169035	GLASS, SIDE REMOVABLE	1
6	161764	CLIP, SIDE GLASS MOUNTING ASBY	1	15	169036	MIRROR, REAR REMOVABLE	1
7	161785LT	TIMER, DUMP STATION 10 CHANNEL	1	16	170045	COVER, DUMP STATION AND FRYER, HENNY PENNY	1
8	161785RT	TIMER, DUMP STATION 10 CHANNEL	1	17	170046	COVER, DUMP STATION AND FRYER, FRYMASTER	1
9	161918	DOOR, LEFT HAND ASBY	1	18	501629	CASTER, 4" NO LOCK	2
				19	501630	CASTER, 4" WITH LOCK	2



**RR5-42CANLT ARRANGEMENT**  
LOCATED TO THE LEFT OF FRYER

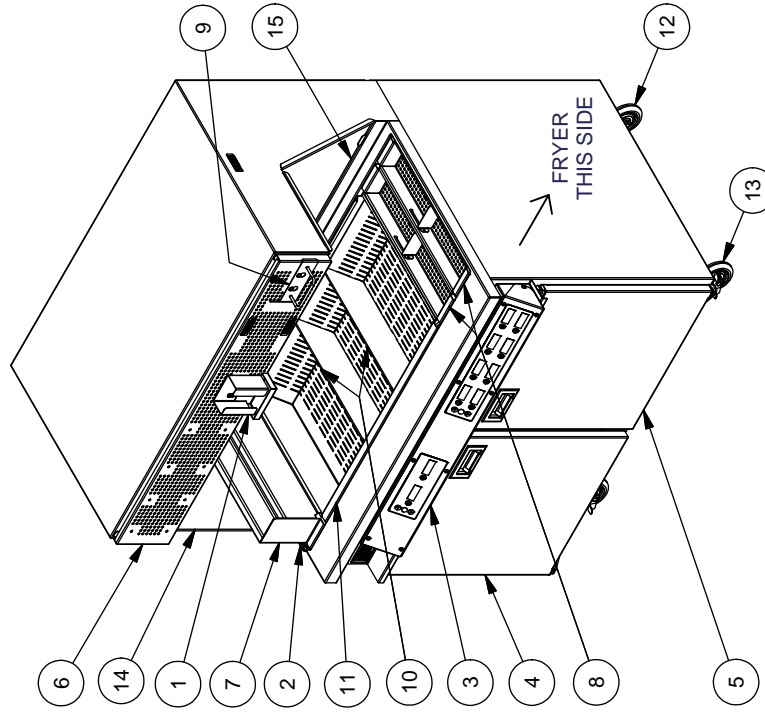


**RR5-42CANRT ARRANGEMENT**  
LOCATED TO THE RIGHT OF FRYER

MODEL:RR5-42CAN FRY DUMP STATION  
REMOVABLE PARTS

**FIGURE 3A**

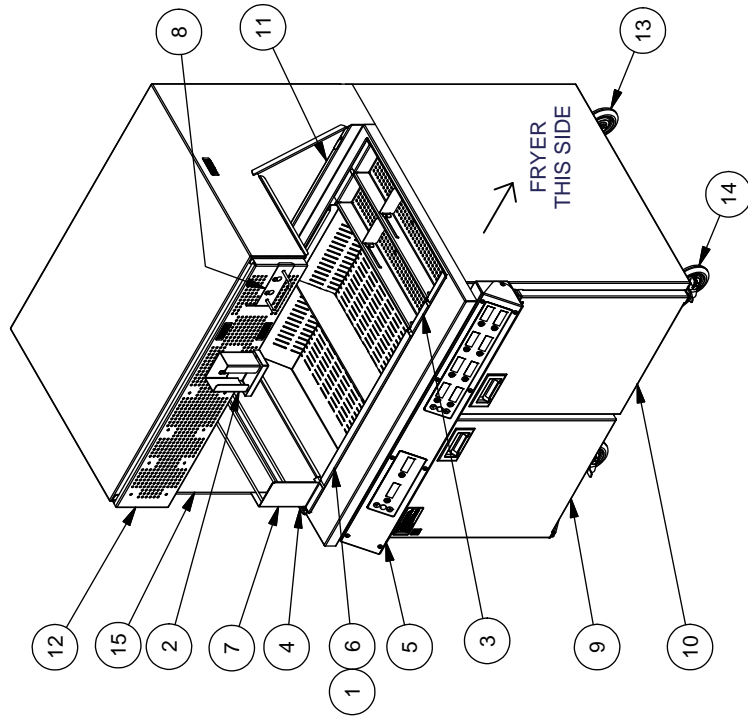
Parts List				Parts List			
ITEM	PART NO.	DESCRIPTION	QTY	ITEM	PART NO.	DESCRIPTION	QTY
1	166784	HOLDER, SCOOP	1	9	162838	WELDMENT, TONG HOLDER	1
2	161764	CLIP, SIDE GLASS MOUNTING ASBY	1	10	161320	DIVIDER, DUMP PAN	2
3	161785LT	TIMER, DUMP STATION 10 CHANNEL	1	11	163010	DUMP PAN, 28.5" WIDE	1
4	161918	DOOR, LEFT HAND ASBY	1	12	501629	CASTER, 4" NO LOCK	2
5	161919	DOOR, RIGHT HAND ASBY	1	13	501630	CASTER, 4" WITH LOCK	2
6	162009	GUARD, FRONT HEAT ASBY	1	14	169035	GLASS, TEMPERED .250" THICK	1
7	162004	BAG HOLDER, SINGLE ROW	1	15	169036	MIRROR, REAR REMOVABLE	1
8	162007	BASKET, 3.5" PRODUCT ORGANIZER	2				



MODEL: RR5-42SNS FRY DUMP STATION  
REMOVABLE PARTS

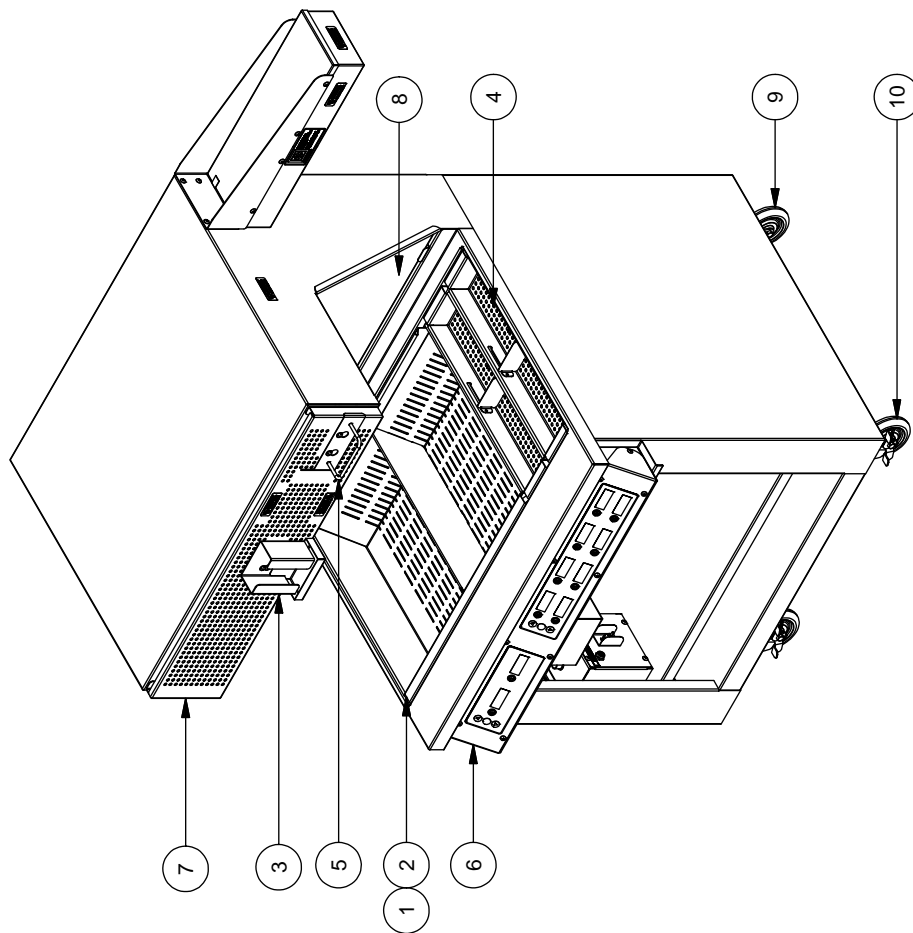
FIGURE 4

Parts List				Parts List			
ITEM	PART NO.	DESCRIPTION	QTY	ITEM	PART NO.	DESCRIPTION	QTY
1	161320	DIVIDER, DUMP PAN	2	9	165873	DOOR, LEFT HAND ASBY	1
2	166784	HOLDER, SCOOP	1	10	165874	DOOR, RIGHT HAND ASBY	1
3	161432	BASKET, 4" PRODUCT ORGANIZER	2	11	165878	MIRROR ASBY	1
4	161764	CLIP, SIDE GLASS MOUNTING ASBY	1	12	165868	GUARD, FRONT HEAT ASBY	1
5	161785	TIMER, DUMP STATION 10 CHANNEL	1	13	501629	CASTER, 4" NO LOCK	2
6	161322	DUMP PAN, 22" WIDE	1	14	501630	CASTER, 4" WITH LOCK	2
7	162004	BAG HOLDER, SINGLE ROW	1	15	169035	GLASS, TEMPERED .250" THICK	1
8	162838	WELDMENT, TONG HOLDER	1				



MODEL: RR5-36 FRY DUMP STATION  
REMOVABLE PARTS

FIGURE 5

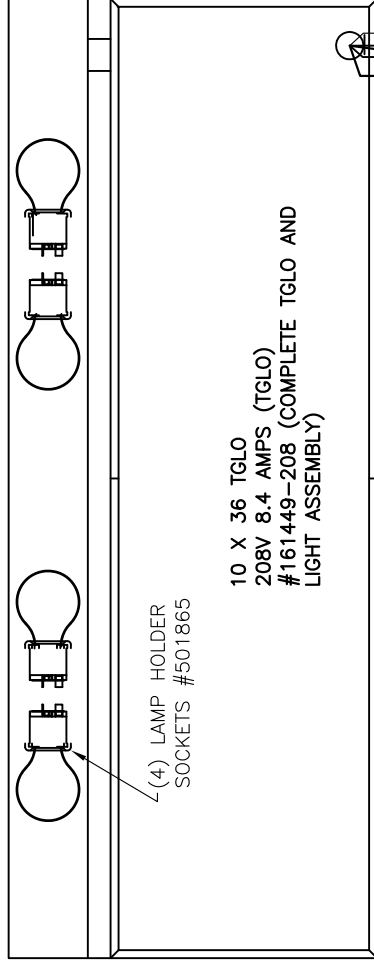


REMOVABLE PARTS			
ITEM	PART NO.	DESCRIPTION	QTY
1	161320	DIVIDER, DUMP PAN	1
2	161322	DUMP PAN, 22" WIDE	1
3	166784	HOLDER, SCOOP	1
4	162007	BASKET, 3.5" PRODUCT ORGANIZER	2
5	162838	HOLDER, TONG (S/N 32000 & AFTER)	1
6	166030LT	TIMER, DUMP STATION 10 CHANNEL	1
7	166018	GUARD, FRONT HEAT ASBY	1
8	166031	MIRROR ASBY	1
9	501629	CASTER, 4" NO LOCK	2
10	501630	CASTER, 4" WITH LOCK	2

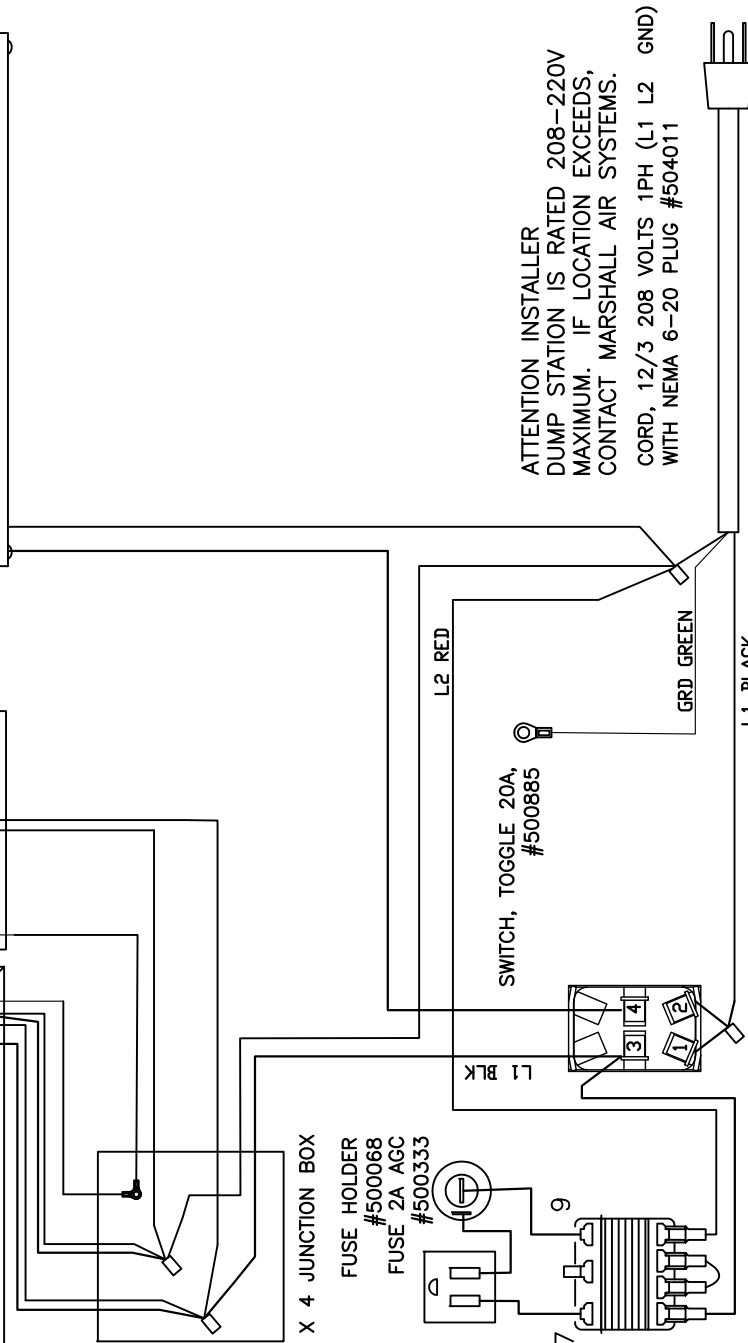
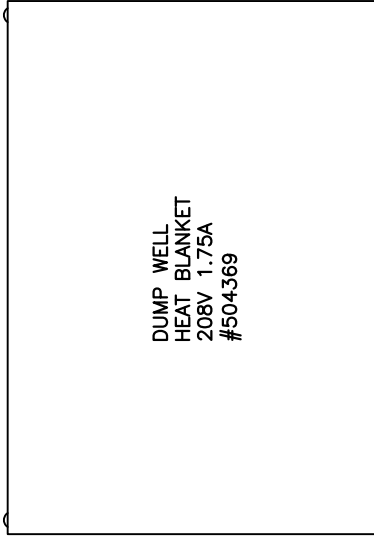
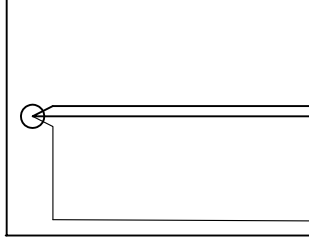
MODEL:RR5-31.5 FRY DUMP STATION  
REMOVABLE PARTS

FIGURE 6

LIGHT STRIP WITH 60W  
BULBS 208V .75 AMPS  
BULB IS #504140



8 X 12 TGLO  
208V 2.5 AMPS #161907

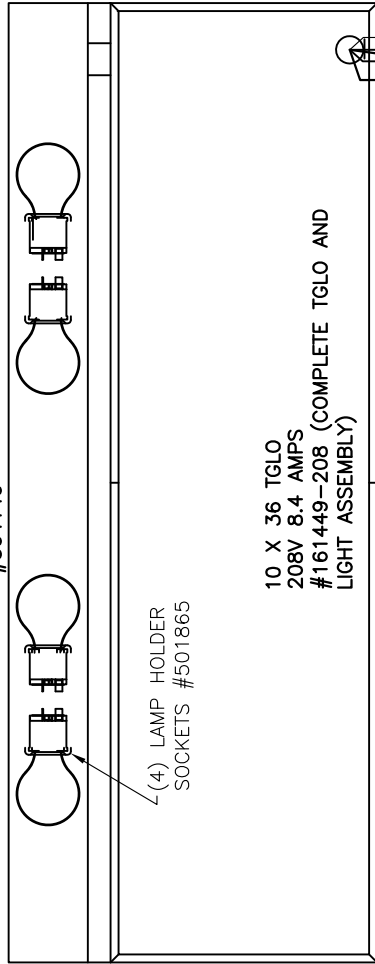


REV	DESCRIPTION	DATE	REV.	BY	DRAWN BY:	DATE:	REV DATE:
1	ADDED TRANSFORMER, RECEIPT	4/18/2013		PW	PW	2/22/13	
2	ADDED PART #	5/6/2013		NC	SCHEMATIC		
3	ADDED 220V INFO	1/7/2014		PW	FAB		
4	UPDATED PART NUMBERS	6/3/2014		PW	REFERENCE		

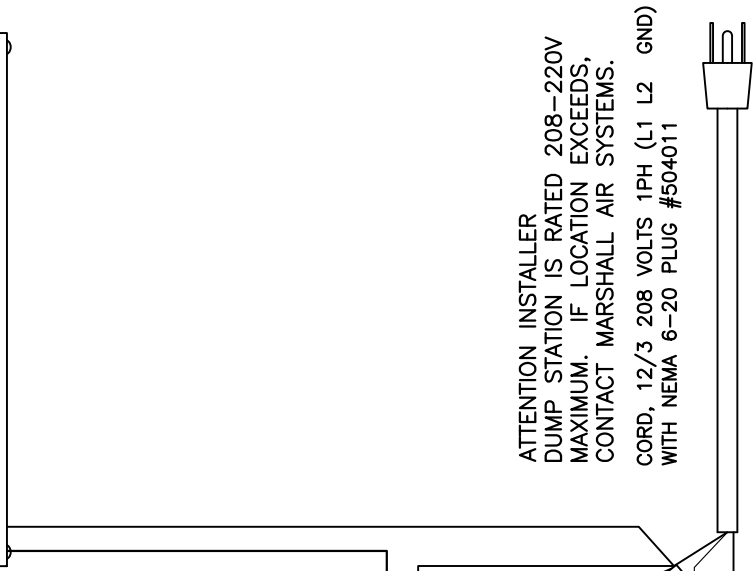
  

MARSHALL AIR SYSTEMS, INC.	
SCHEMATIC, FRY DUMP TABLE	
RR5-48.5, 208-220V 1PH 14.75-15.5A	
SIZE: A	ROUTE: ASBY
DWG. NO.: 161438	REV: 4
SCALE: X	IMAGE MAY BE REDUCED
NTS	NTS
CODE: RR5-48.5	

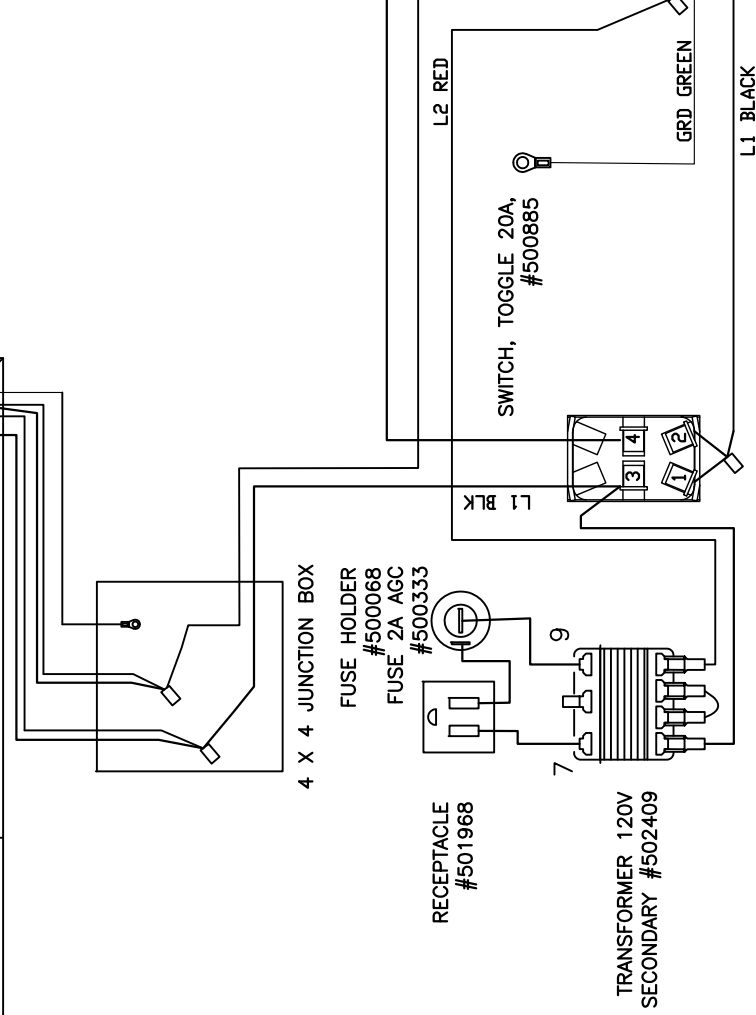
LIGHT STRIP WITH 60W  
BULBS 208V .75 AMPS  
#504140



DUMP WELL  
HEAT BLANKET  
208V 1.25A  
#504376

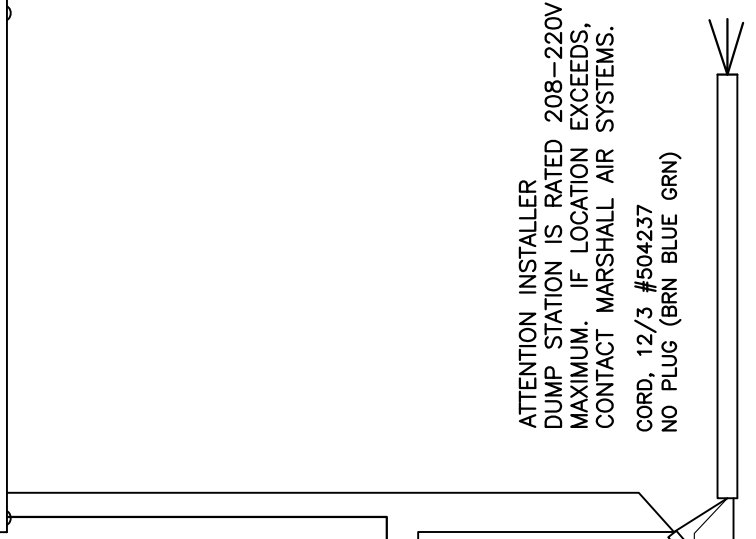
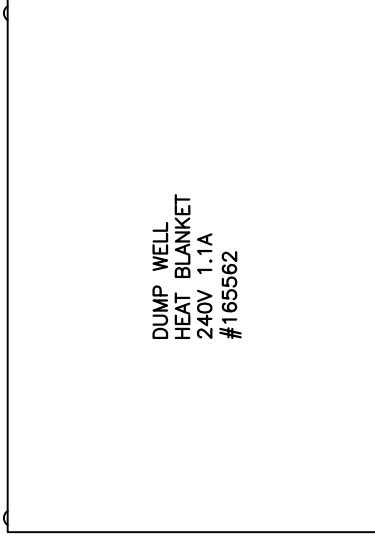
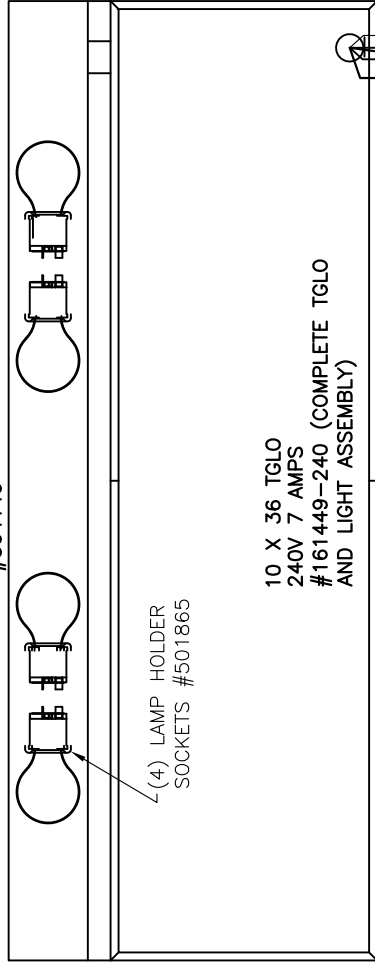


ATTENTION INSTALLER  
DUMP STATION IS RATED 208-220V  
MAXIMUM. IF LOCATION EXCEEDS,  
CONTACT MARSHALL AIR SYSTEMS.  
CORD, 12/3 208 VOLTS 1PH (L1 L2 GND)  
WITH NEMA 6-20 PLUG #504011



REV	DESCRIPTION	DATE	REV. BY	DRAWN BY:	DATE:	REV DATE:	<b>MARSHALL AIR SYSTEMS, INC.</b>	
1	ADDED 220V INFO	01/07/2014	PW	NG	5/2/13	-	SCHEMATIC, FRY DUMP TABLE	
				GENERIC NAME: SCHEMATIC		PRODUCT CLASS: HHC		RR5-42, 208-220V 1PH 13-13.5A
				PRODUCT LINE: FAB		SIZE: ROUTE: DWG. NO.:		A A ASBY 161931
				SCALE: X		IMAGE MAY BE REDUCED		REV: 1
				NTS		NTS		CODE: RR5-42

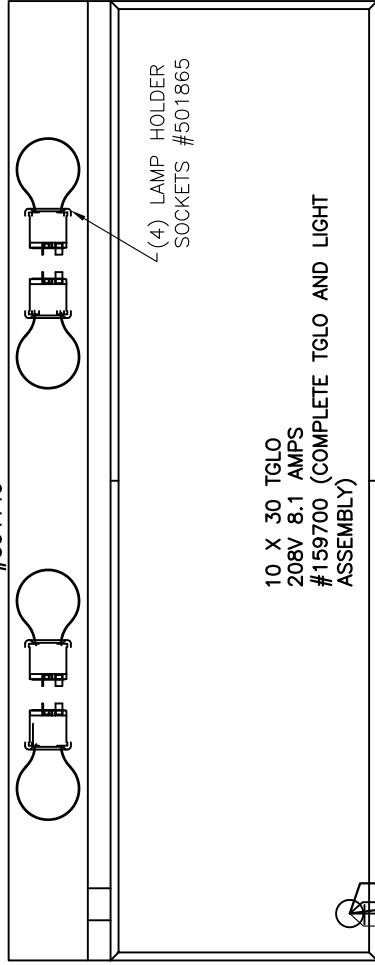
LIGHT STRIP WITH 60W  
BULBS 240V .7 AMPS  
#504140



ATTENTION INSTALLER  
DUMP STATION IS RATED 208-220V  
MAXIMUM. IF LOCATION EXCEEDS,  
CONTACT MARSHALL AIR SYSTEMS.  
CORD, 12/3 #504237  
NO PLUG (BRN BLUE GRN)

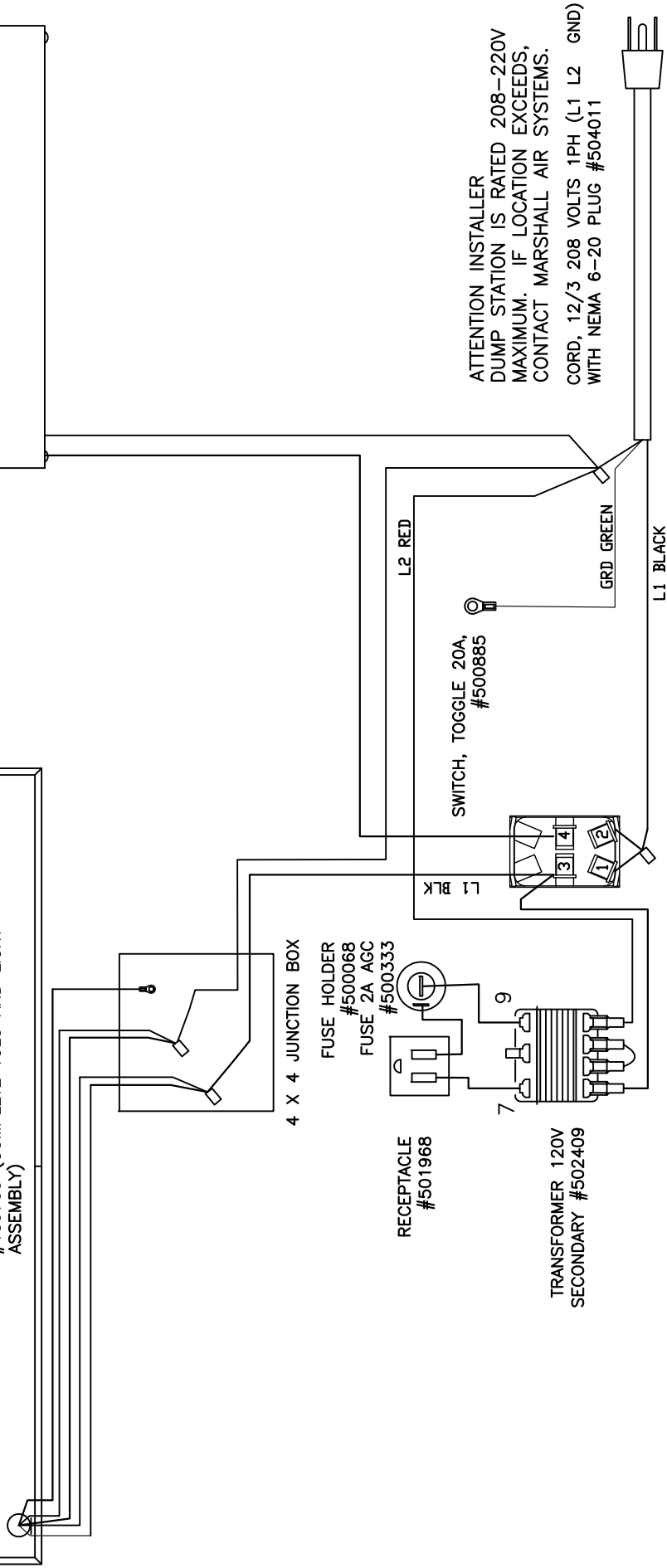
REV	DESCRIPTION	DATE	REV. BY	DRAWN BY:	DATE:	REV DATE:	<b>MARSHALL AIR SYSTEMS, INC.</b>
-		-	-	PW	10/16/2014	-	SCHEMATIC, FRY DUMP TABLE
				GENERIC NAME: SCHEMATIC			RR5-42CE, 220-240V 9A
				PRODUCT LINE: FAB			RR5-42CE, 220-240V 9A
				REFERENCE		SIZE: A	DWG. NO.: 165569
				SCALE: X		IMAGE MAY BE REDUCED	REV: 0
				NTS		NTS	CODE: RR5-42INTLCE-NT

LIGHT STRIP WITH 60W  
BULBS 208V .75 AMPS  
#504140



10 X 30 TGLO  
208V 8.1 AMPS  
#159700 (COMPLETE TGLO AND LIGHT  
ASSEMBLY)

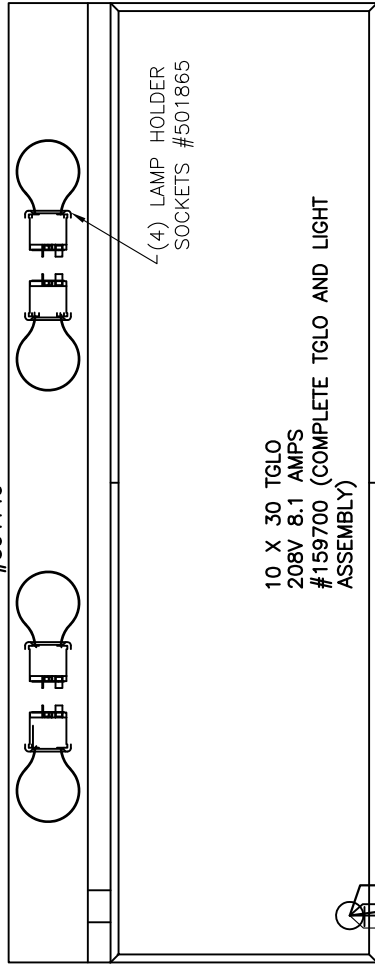
DUMP WELL  
HEAT BLANKET  
208V 1A  
#165882



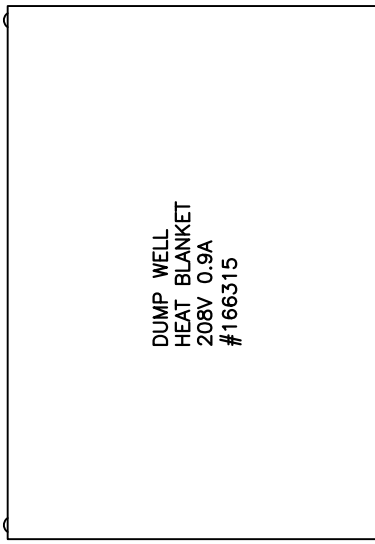
ATTENTION INSTALLER  
DUMP STATION IS RATED 208-220V  
MAXIMUM. IF LOCATION EXCEEDS,  
CONTACT MARSHALL AIR SYSTEMS.  
CORD, 12/3 208 VOLTS 1PH (L1 L2 GND)  
WITH NEMA 6-20 PLUG #504011

REV	DESCRIPTION	DATE	REV. BY	DRAWN BY:	DATE:	REV DATE:
				NG	12/16/2014	-
MARSHALL AIR SYSTEMS, INC. SCHEMATIC, FRY DUMP TABLE RR5-36, 208-220V 1PH 10A						
REFERENCE " X "				SIZE: A ROUTE: ELECT DWG. NO.: 165883 REV.: 0		
IMAGE MAY BE REDUCED NTS NTS				CODE: RR5-36		

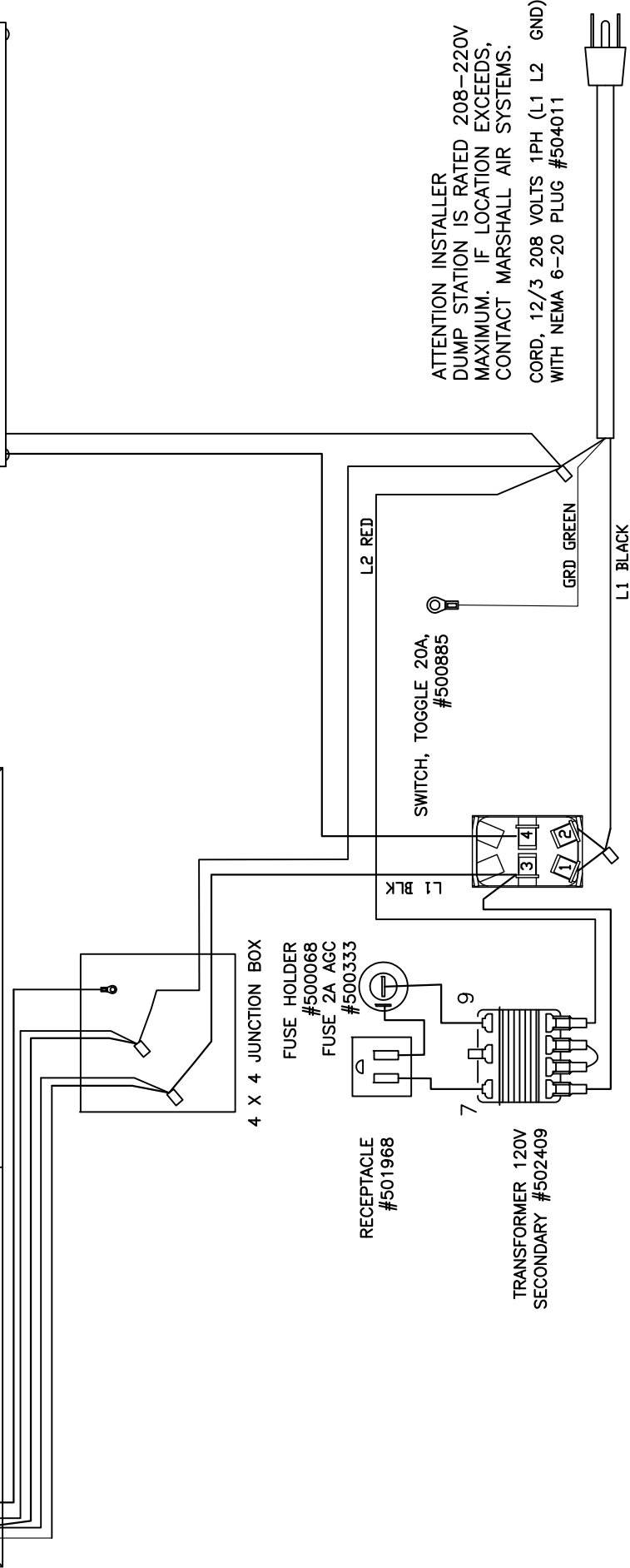
LIGHT STRIP WITH 60W  
BULBS 208V .75 AMPS  
#504140



DUMP WELL  
HEAT BLANKET  
208V 0.9A  
#166315



10 X 30 TGLO  
208V 8.1 AMPS  
#159700 (COMPLETE TGLO AND LIGHT  
ASSEMBLY)



ATTENTION INSTALLER  
DUMP STATION IS RATED 208-220V  
MAXIMUM. IF LOCATION EXCEEDS,  
CONTACT MARSHALL AIR SYSTEMS.  
CORD, 12/3 208 VOLTS 1PH (L1 L2 GND)  
WITH NEMA 6-20 PLUG #504011

REV	DESCRIPTION	DATE	REV. BY	DRAWN BY: NG	DATE: 12/16/2014	REV DATE: -	MARSHALL AIR SYSTEMS, INC.	
				GENERIC NAME: SCHEMATIC				SCHEMATIC, FRY DUMP TABLE RR5-31.5, 208-220V 1PH 10A
				PRODUCT LINE: FAB	PRODUCT CLASS: HHC			
	REFERENCE			SIZE: A	ROUTE: ELECT	DWG. NO.: 166037	REV: 0	
				SCALE: X	IMAGE MAY BE REDUCED	CODE: RR5-31.5		