

LIGHT STRIP WITH 60W  
BULBS 208V .75 AMPS  
#504140

(4) LAMP HOLDER  
SOCKETS #501865

10 X 30 TGLO  
208V 8.1 AMPS  
#159700 (COMPLETE TGLO AND LIGHT  
ASSEMBLY)

DUMP WELL  
HEAT BLANKET  
208V 1A  
#165882

4 X 4 JUNCTION BOX

FUSE HOLDER  
#500068  
FUSE 2A AGC  
#500333

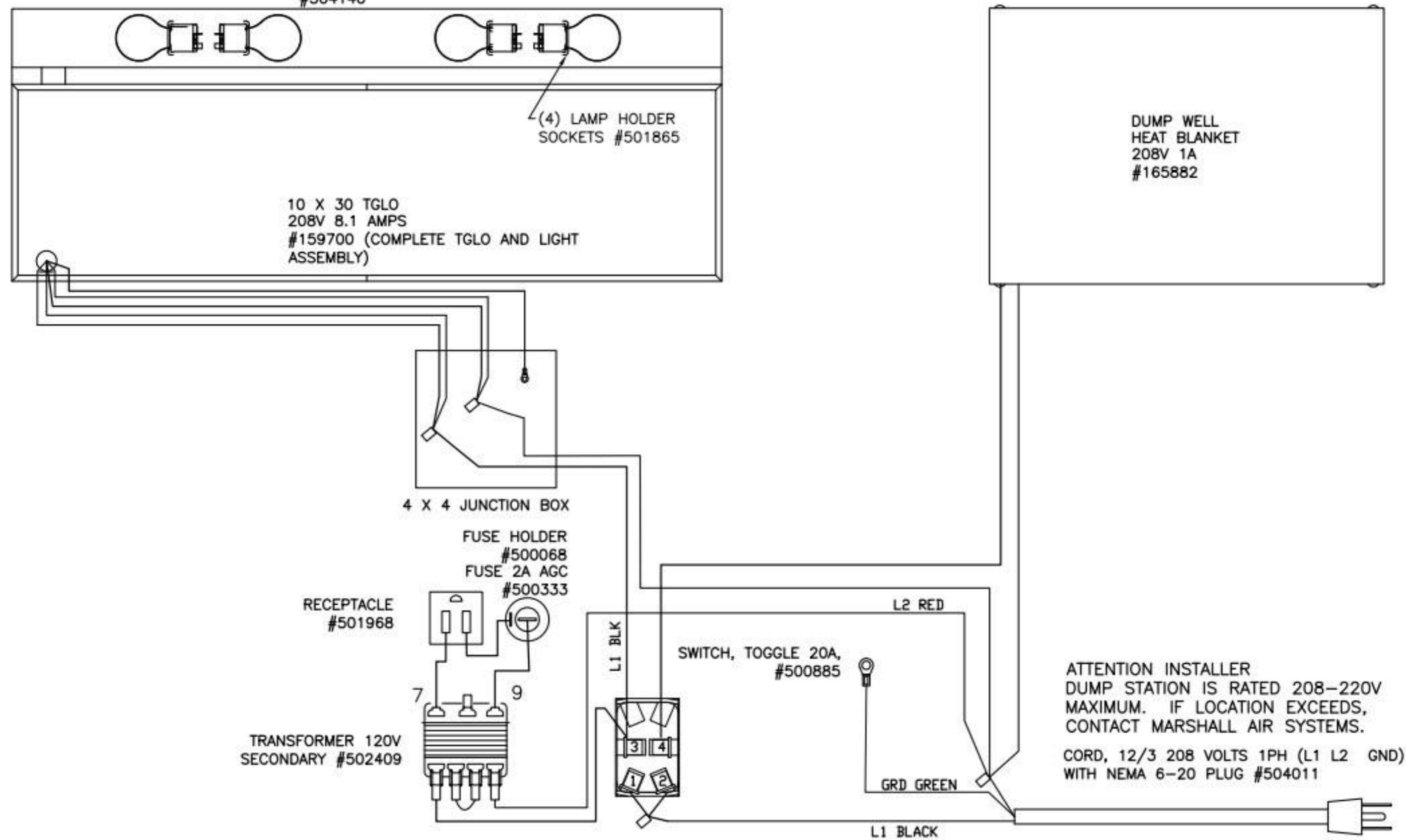
RECEPTACLE  
#501968

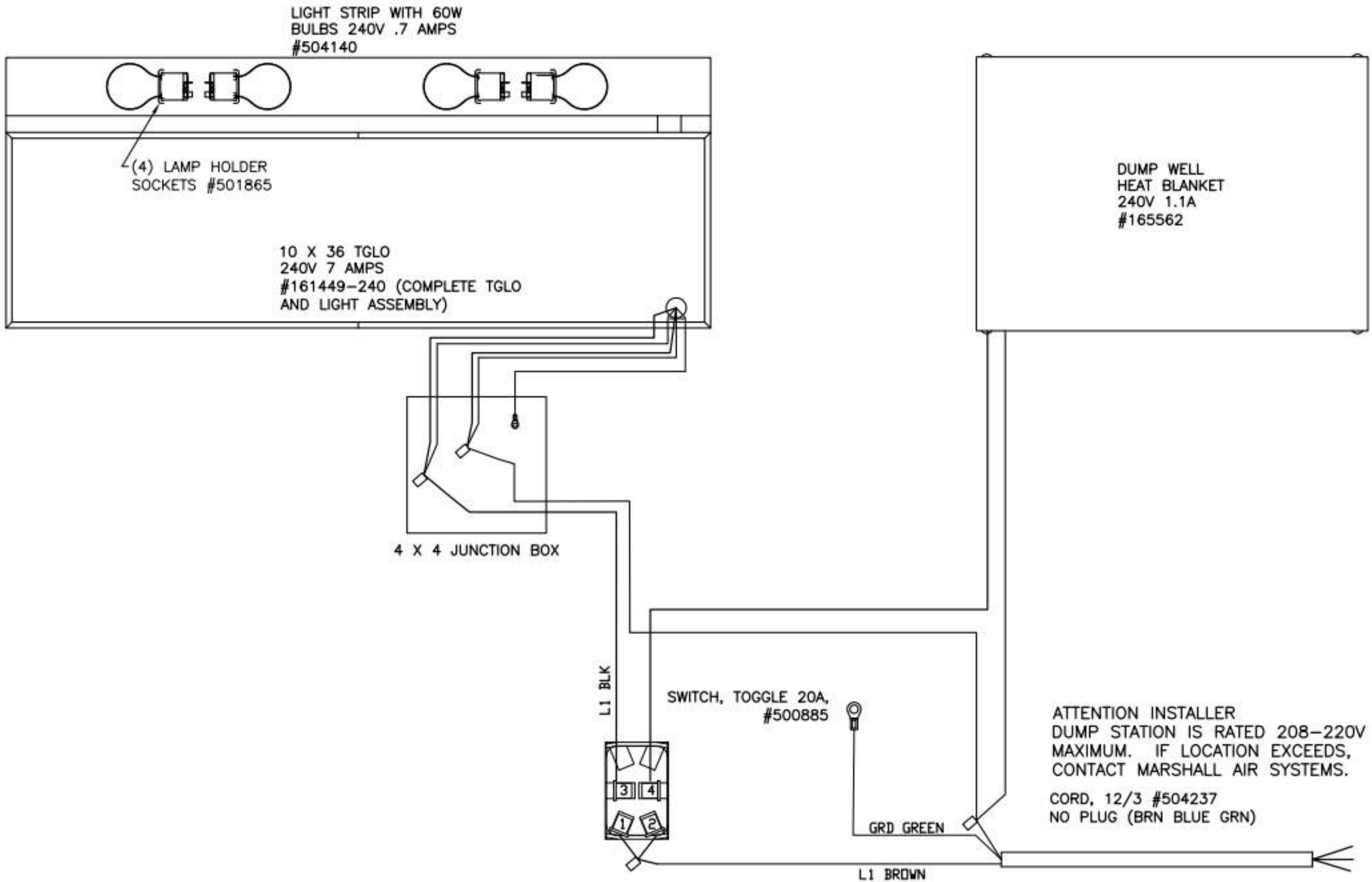
TRANSFORMER 120V  
SECONDARY #502409

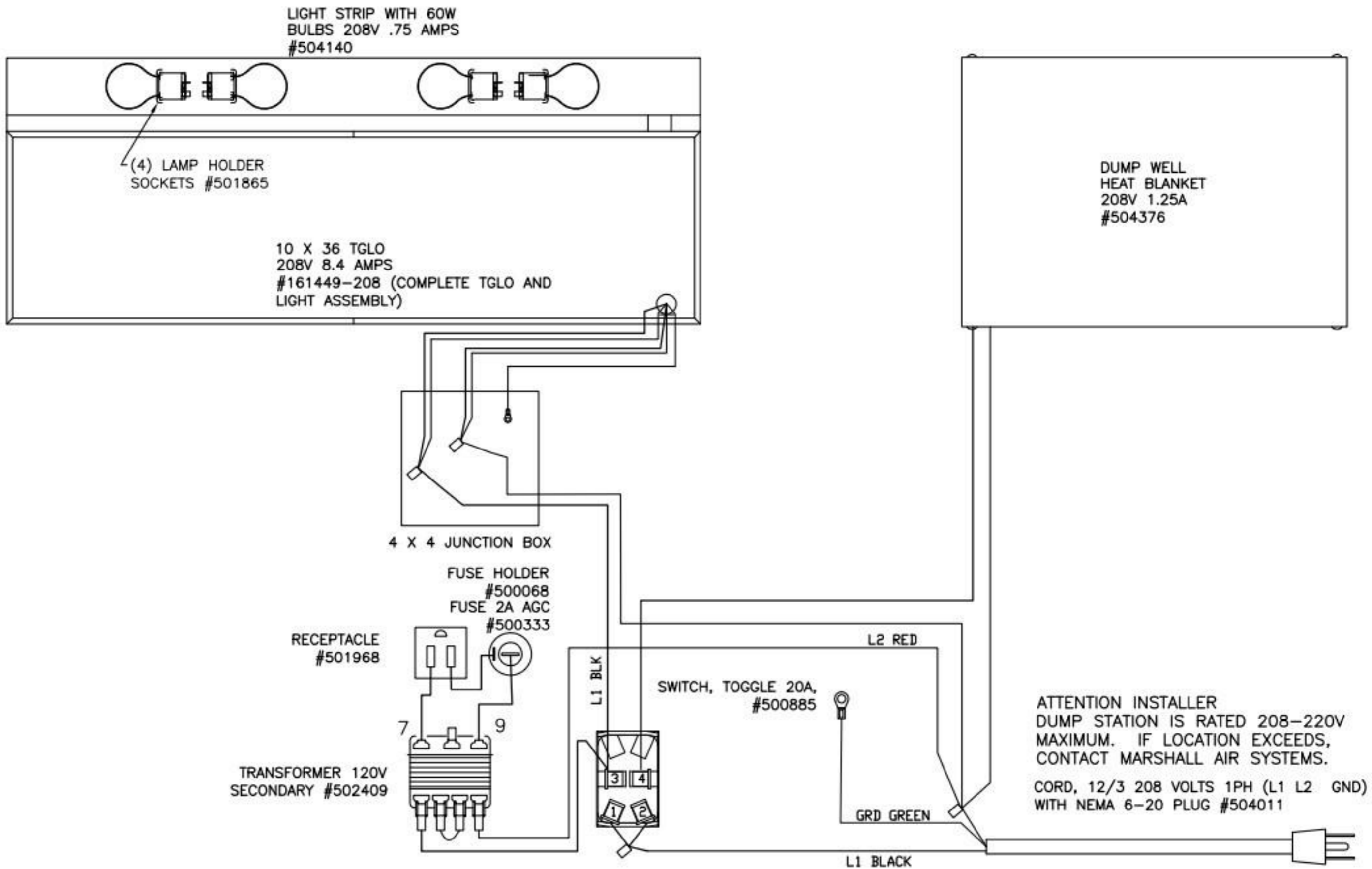
SWITCH, TOGGLE 20A,  
#500885

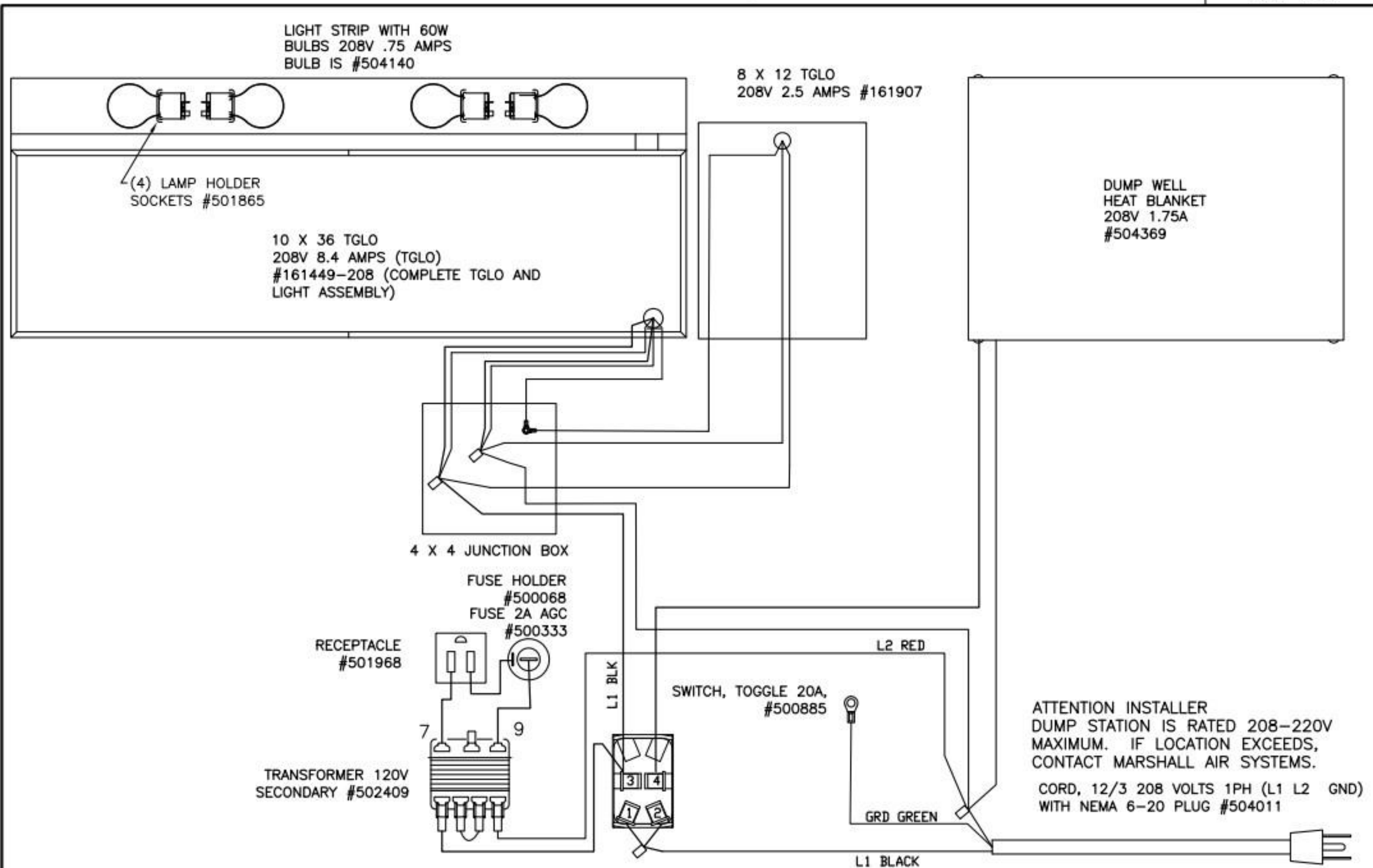
ATTENTION INSTALLER  
DUMP STATION IS RATED 208-220V  
MAXIMUM. IF LOCATION EXCEEDS,  
CONTACT MARSHALL AIR SYSTEMS.

CORD, 12/3 208 VOLTS 1PH (L1 L2 GND)  
WITH NEMA 6-20 PLUG #504011









ATTENTION INSTALLER  
 DUMP STATION IS RATED 208-220V  
 MAXIMUM. IF LOCATION EXCEEDS,  
 CONTACT MARSHALL AIR SYSTEMS.  
 CORD, 12/3 208 VOLTS 1PH (L1 L2 GND)  
 WITH NEMA 6-20 PLUG #504011