

BROIL ELEMENTS
 #1, 2, 7, 8 CONTROLLED
 3, 4, 5, 6 - UNCONTROLLED
 9, 10, 11, 12
SOLID STATE RELAYS
 250V, 25A CONTACT RATING
 3-32 VDC INPUT

ALL WIRES #18 AWG THIN UNLESS NOTED

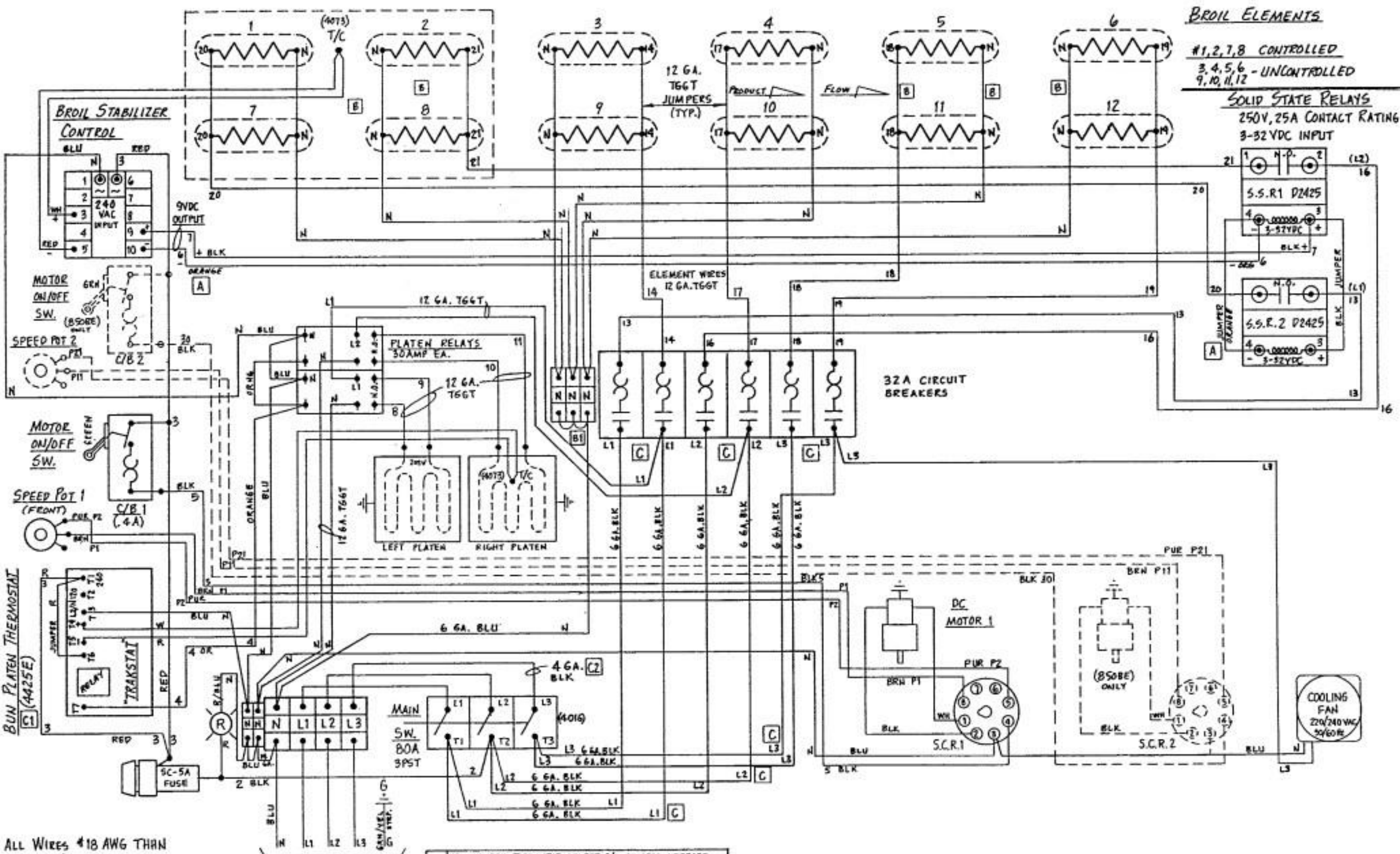
ELEMENTS
 *4081, 240V, 2200W → 208V Y120V, 3φ, 50/60HZ, 69A
 *4075, 250V, 2200W → 230V Y120V, 3φ, 50/60HZ, 71A

C	NEW PLATEN THERMOSTAT, DELETE C/B JUMPERS, INCREASE WIRE SIZE, WASH-1 (1) PN 4071-P (2) 6 GA.	11-7-95	DZ
B	DELETE RECEPT, PWR. WIRE TO C/B; ADD (3) JUMPERS; CHANGE WIRE COND. WFS: (1) DUAL WIRES (2) BLUE	5-31-95	DZ
A	REVISE TERMINAL STRIP: ADD'L 'N' BLKX	5-10-95	DZ

BROIL ELEMENTS

#1,2,7,8 CONTROLLED
 3,4,5,6 - UNCONTROLLED
 9,10,11,12

SOLID STATE RELAYS
 250V, 25A CONTACT RATING
 3-32VDC INPUT



ALL WIRES #18 AWG THIN UNLESS NOTED

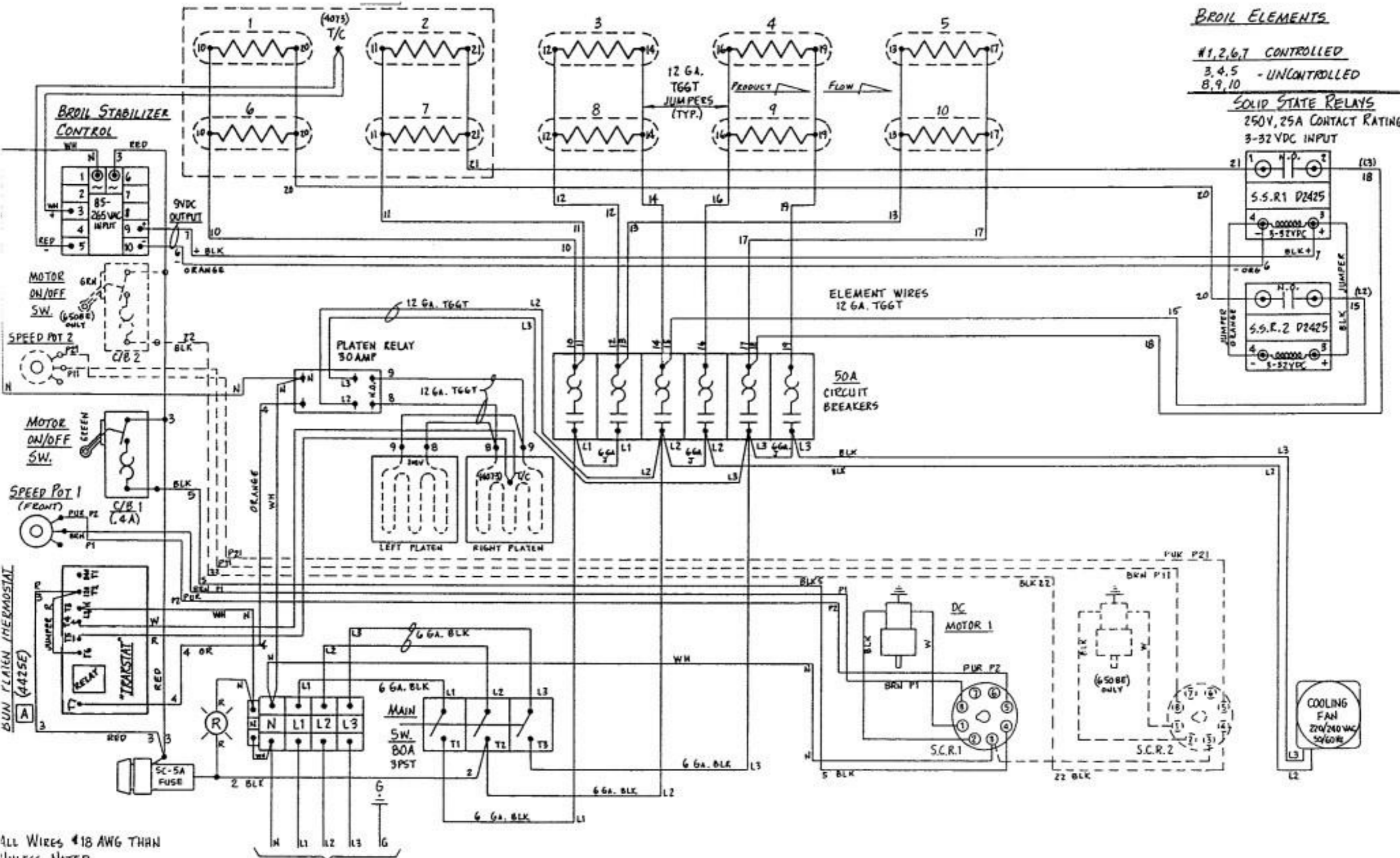
5 CONDUCTOR
 ELEMENTS: #4075, 250V, 2200W → 380V/220V, 3φ, 50/60HZ, 39A
 #4076, 265V, 2200W → 415V/240V, 3φ, 50/60HZ, 39A

C	NEW PLATEN THERMOSTAT, DELETE C/D JUMPERS, INCREASE WIRE SIZE. WAS: (1) FN 4071-R (2) 6GA.	11-7-95	DZ
B	ADD "N" BLOCK, KEY "N" WIRING. WAS: (1) RTT (2)	6-M-95	DZ
A	CHANGE WIRE COLOR R STABIL. CON. WAS BLUE	5-31-91	DZ

BROIL ELEMENTS

#1,2,6,7 CONTROLLED
 3,4,5 - UNCONTROLLED
 8,9,10

SOLID STATE RELAYS
 250V, 25A CONTACT RATING
 3-32VDC INPUT



ALL WIRES #18 AWG UNLESS NOTED

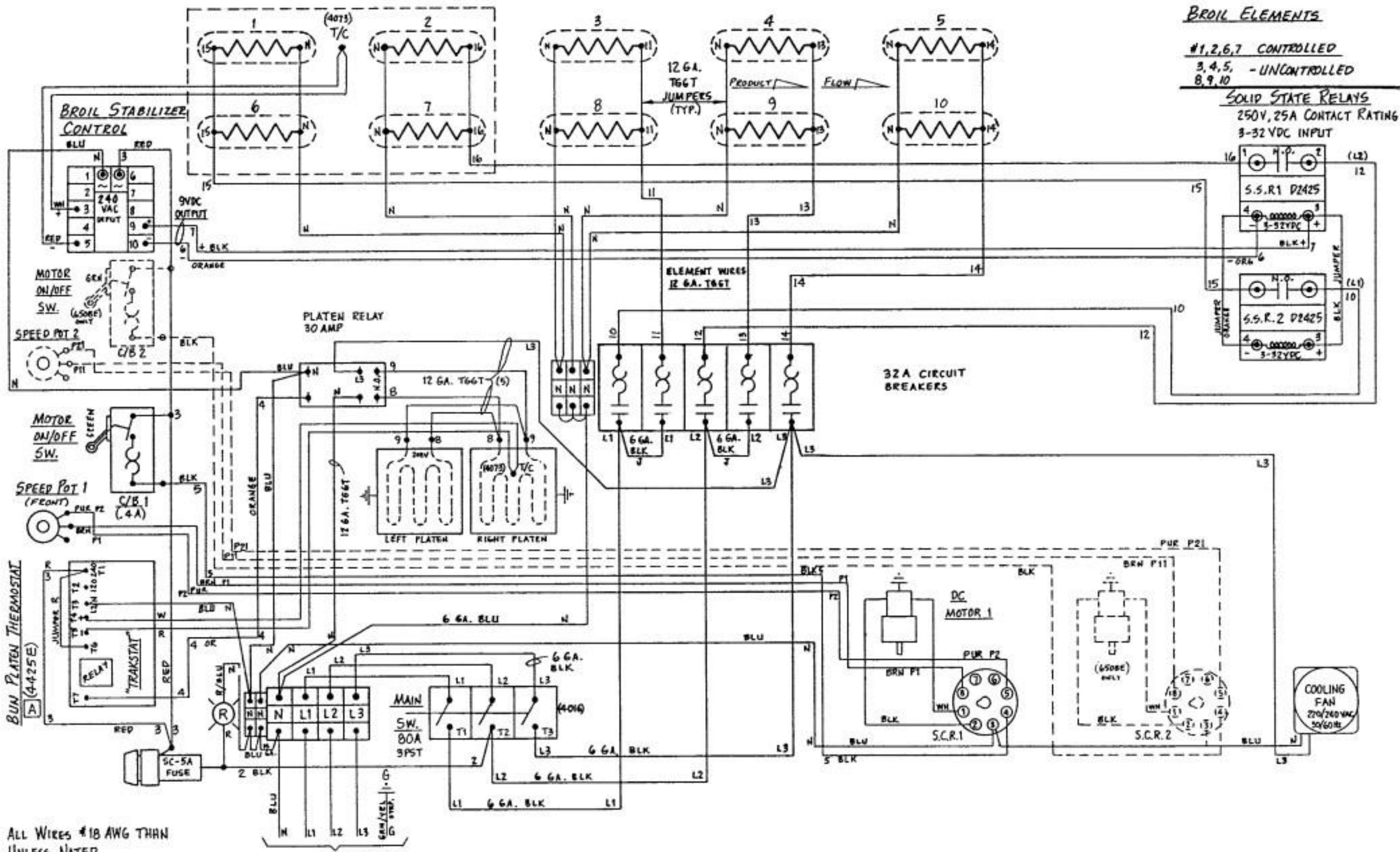
ELEMENTS
 *4081, 240V, 2200W → 208V 120V, 3φ, 50/60HZ, 55A
 *4075, 250V, 2200W → 230V 120V, 3φ, 50/60HZ, 56A

A NEW PLATEN THERMOSTAT, WAS P/N 4071-P 11-7-95 DZ

BROIL ELEMENTS

#1,2,6,7 CONTROLLED
 3,4,5 - UNCONTROLLED
 8,9,10

SOLID STATE RELAYS
 250V, 25A CONTACT RATING
 3-32 VDC INPUT



ALL WIRES #18 AWG THIN UNLESS NOTED

ELEMENTS $\left\{ \begin{array}{l} \#4075, 250V, 2200W \rightarrow \{ 380V \} 220V, 3R, 50/60HZ, 31A \\ \#4076, 265V, 2200W \rightarrow \{ 415V \} 240V, 3R, 50/60HZ, 30A \end{array} \right.$

A NEW PLATEN THERMOSTAT, WAS P/N 4071-P 11-7-95 DZ