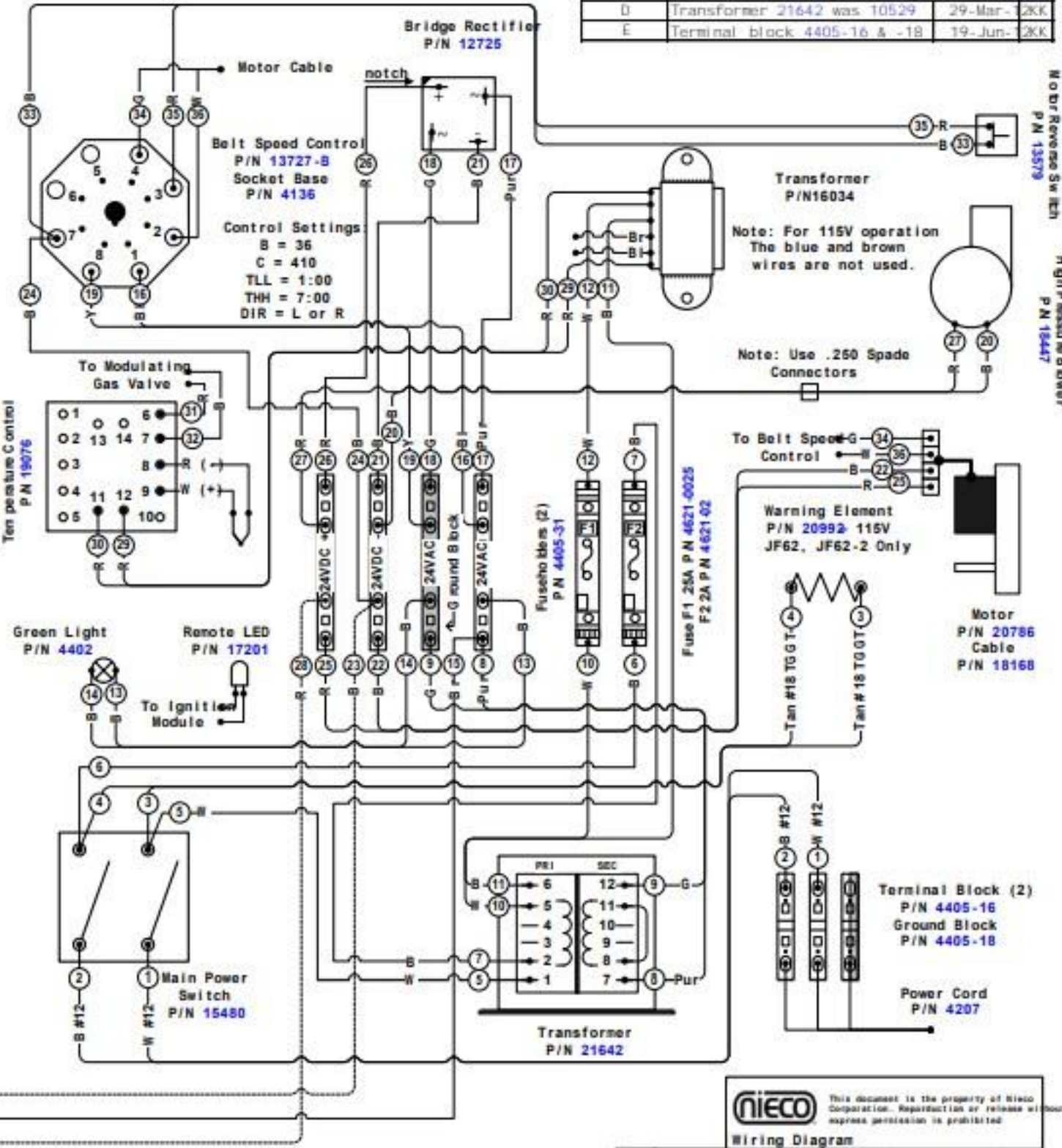
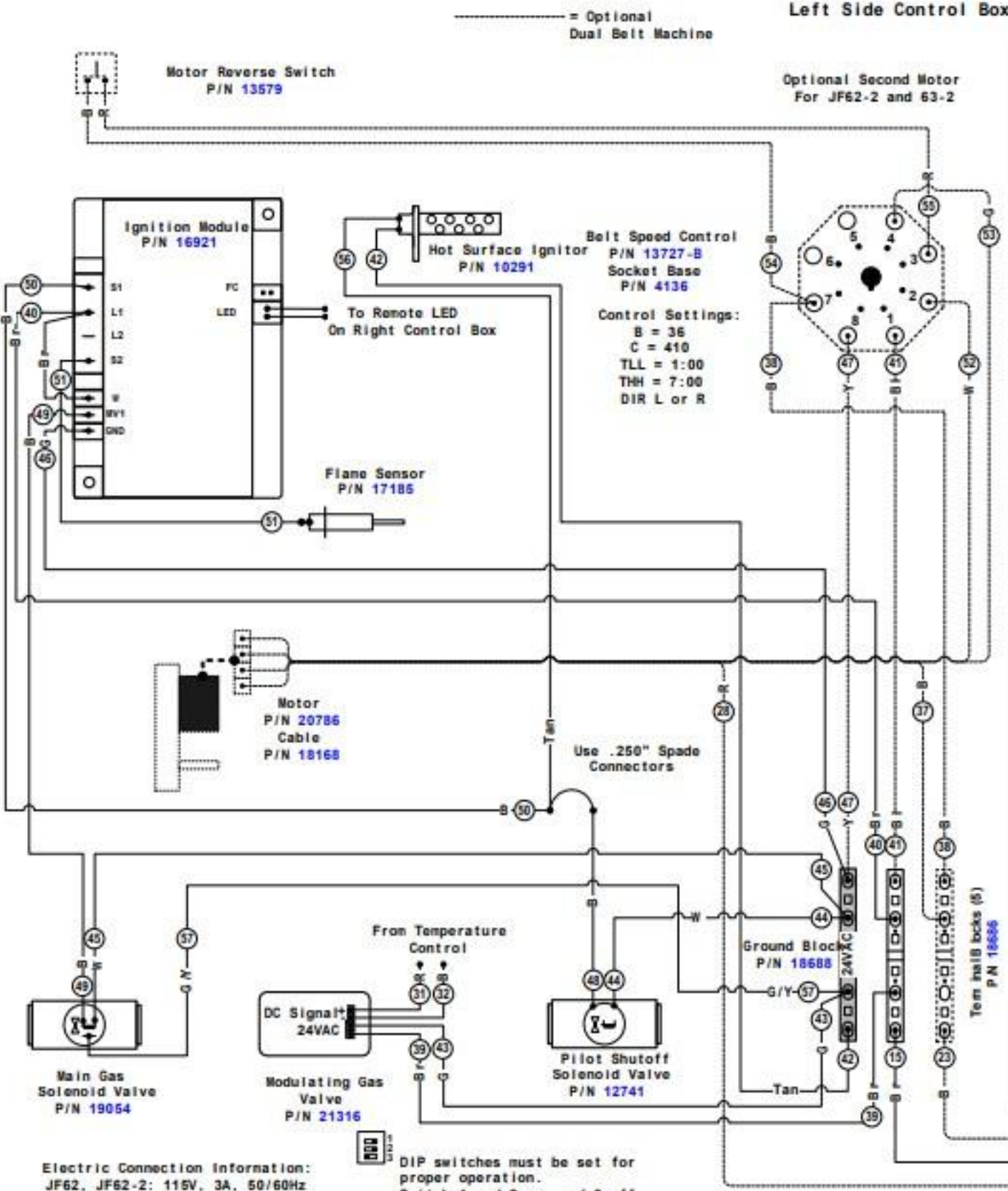


REV.	DESCRIPTION	DATE	BY
A	Initial Release	3-May-11	PB
B	Corrected Motor P/N. Revised Mod 9-Valve	19-Jun-11	PB
C	Corrected Fuseholder P/N. Corrected 19-Valve transformer wiring. Added ground to 19-054	19-Jun-11	PB
D	Transformer 21642 was 10529	29-Mar-12	ZKK
E	Terminal block 4405-16 & -18	19-Jun-12	ZKK

### Left Side Control Box

### Right Side Control Box



Electric Connection Information:  
 JF62, JF62-2: 115V, 3A, 50/60Hz  
 JF63, JF63-2: 115V, 1A, 50/60Hz

DIP switches must be set for proper operation.  
 Switch 1 and 2 on, and 3 off.

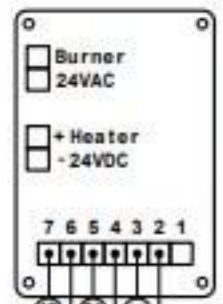
**nieco** This document is the property of Nieco Corporation. Reproduction or release without express permission is prohibited.

Drawn	Date	Model	Rev. No.	Rev.
PB	3May11	JF62G; JF62-2G JF63G; JF63-2G	19117	E



Right Side Control Box  
Feed End

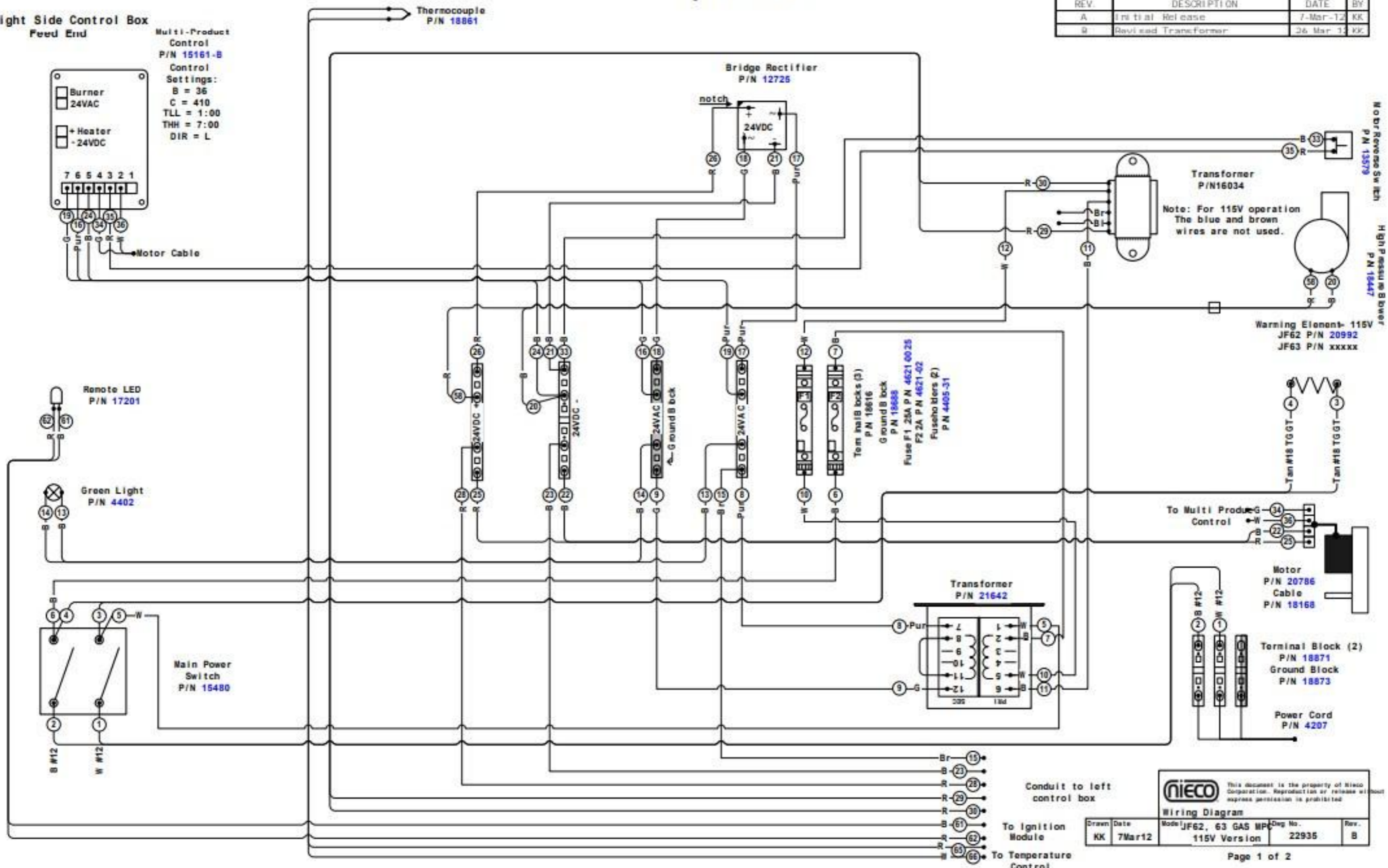
Multi-Product Control  
P/N 15161-B  
Control Settings:  
B = 36  
C = 410  
TLL = 1:00  
THH = 7:00  
DIR = L



Motor Cable

Right Side Control Box

REV.	DESCRIPTION	DATE	BY
A	Initial Release	7-Mar-12	KK
B	Revised Transformer	26-Mar-13	KK



Drawn	Date	Mode	Model	Part No.	Rev.
KK	7Mar12	JF62, 63 GAS MP	115V Version	22935	B

**nieco** This document is the property of Nieco Corporation. Reproduction or release without express permission is prohibited.

# Left Side Control Box

## Wiring Diagram

Drawn	Date	Model	Part No.	Rev.
KK	7Mar12	JF62G, JF63G WPC 115V Version	22935	B

