

REPLACEMENT PARTS LIST

iHybrid[™] Dual Fuel Gas Heat Pump
DF6SF Series
15 SEER Models



DF6SF DUAL FUEL HEAT PUMP

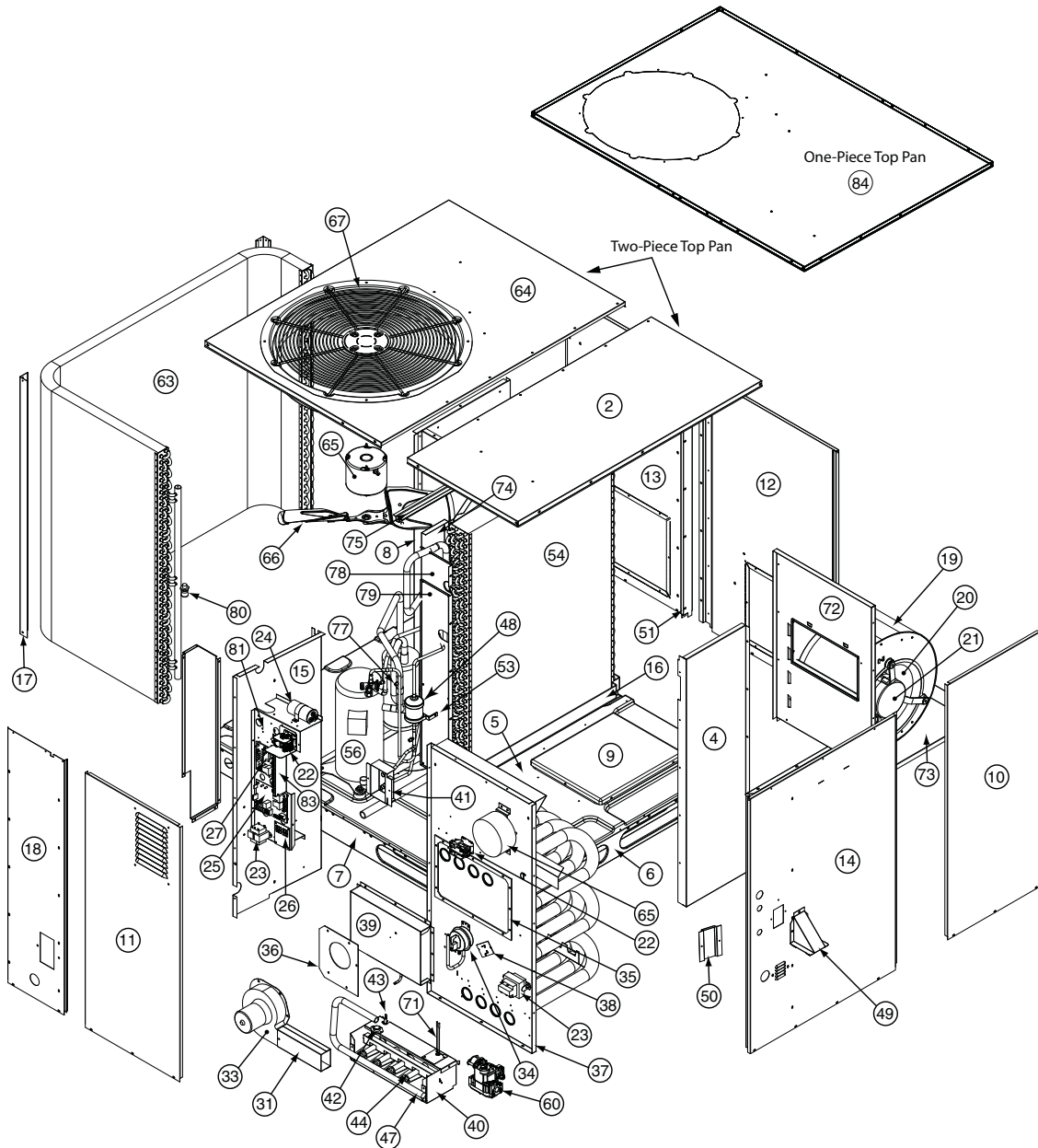
ITEM	DESCRIPTION	X24K-072C 920986	X36K-100C 920988	X48K-120C 920990	X60K-120C 920992
1	ASSY, CAP, DUCT, HORIZONTAL (NOT SHOWN)	283101R	283101R	283101R	283101R
2	TOP PAN ASSY - LEFT	293781R	293781R	293781R	293781R
3	CORE, CHARGING PORT, STD FITTING (NOT SHOWN)	662103	662103	662103	662103
	CORE, CHARGING PORT, HI-FLOW (NOT SHOWN)	664331	664331	664331	664331
4	PANEL, HEAT EX. DIVIDER, 34"	D05072R	-	-	-
	PANEL, HEAT EX. DIVIDER, 38"	-	D05075R	-	-
	PANEL, HEAT EX. DIVIDER, 42"	-	-	D05074R	D05074R
5	BOTTOM PAN ASSY	D05480R	D05480R	D05480R	-
	BOTTOM PAN ASSY EXT	-	-	-	D05481R
6	RAIL, BASE, 47.23" LG	277551	277551	277551	277551
7	RAIL, BASE, 55.63" LG	277552	277552	277552	277552
8	DIVIDER PANEL ASSY, 34"	D05504R	-	-	-
	DIVIDER PANEL ASSY, 38"	-	M0060722R	-	-
	DIVIDER PANEL ASSY, 42"	-	-	M0060704R	M0060704R
9	DUCT CAP ASSY	D05530R	D05530R	D05530R	D05530R
10	BLOWER PANEL ASSY, 34"	D05542R	-	-	-
	BLOWER PANEL ASSY, 38"	-	D05543R	-	-
	BLOWER PANEL ASSY, 42"	-	-	M0060714BR	M0060714BR
11	ASSY, SRV PNL, INSULATED, 34" LOUVERED	296638R	-	-	-
	ASSY, SRV PNL, INSULATED, 38" LOUVERED	-	296639R	-	-
	ASSY, SRV PNL, INSULATED, 42" LOUVERED	-	-	M0060703R	M0060703R
12	SUPPLY PANEL ASSY, 34"	D05552R	-	-	-
	SUPPLY PANEL ASSY, 38"	-	D05557R	-	-
	SUPPLY PANEL ASSY, 42"	-	-	M0060706R	M0060706R
13	RETURN PANEL ASSY, 34"	D05565R	-	-	-
	RETURN PANEL ASSY, 38"	-	D05566R	-	-
	RETURN PANEL ASSY, 42"	-	-	M0060707R	M0060707R
14	CORNER PANEL ASSY, 34"	D05628R	-	-	-
	CORNER PANEL ASSY, 38"	-	D05629R	-	-
	CORNER PANEL ASSY, 42"	-	-	M0060708R	M0060708R
15	ASSY, CLOSE-OFF PANEL, 34"	D05688R	-	-	-
	ASSY, CLOSE-OFF PANEL, 38"	-	D05683R	-	-
	ASSY, CLOSE-OFF PANEL, 42"	-	-	M0060710R	M0060710R
16	PAN, DRAIN	669190	669190	669190	669190
17	POST, CORNER, 34"	D09996R	-	-	-
	POST, CORNER, 38"	-	D09997R	-	-
	POST, CORNER, 42"	-	-	2B1941R	2B1941R
18	PANEL, FRONT, 34"	298892R	-	-	-
	PANEL, FRONT, 38"	-	298893BR	-	-
	PANEL, FRONT, 42"	-	-	298894BR	298894BR
19	WRAPPER, BLWR, HSG, 9/10X10	297214R	297214R	-	-
	WRAPPER, BLWR, HSG, 11X10	-	-	297219R	297219R
20	WHEEL, BLOWER 10 X 10	667207R	667207R	-	-
	WHEEL, BLOWER 11X10	-	-	667260R	667260R
21	MTR, VS, PROG, DF, 1/2HP	M0034603R	-	M0034603R	M0034603R
	MTR, VS, PROG, DF, 3/4HP	-	M0034602R	-	-
	MTR, VS, PROG, DF, 1HP	-	-	M0034601R	M0034601R
22	CONTACTOR	624712	624712	624713	624713
23	TRANSFORMER 40 VA	622336	622336	622336	622336
24	CAPAC, RUN 35 / 5 / 370-RND-MTL	620762	-	-	-
	CAPAC, RUN 40 / 7.5 / 370-RND-MTL	-	620888	-	-
	CAPAC, RUN 45 / 7.5 / 370-RND-MTL	-	-	621153	-
	CAPAC, RUN 80 / 7.5 / 370-RND-MTL	-	-	-	621717
25	CONTROL, INTEGRATED, HSI	903106	903106	903106	903106
26	PCB, VS INTERFASE, W/ HUM	624677	624677	624677	624677
27	BOARD, DEMAND DEFROST	624733	624733	624733	624733
28	DEMAND DEFROST SENSOR (NOT SHOWN)	626550	624740	624740	624740
29	PLUG, MOLDED, LV, 2-STAGE, .25 TERMS (NOT SHOWN)	634682	634682	634682	634682
	PLUG, MOLDED, HV, 460V (NOT SHOWN)	-	-	-	634715

DF6SF DUAL FUEL HEAT PUMP

ITEM	DESCRIPTION	X24K-072C 920986	X36K-100C 920988	X48K-120C 920990	X60K-120C 920992
30	AMBIENT SENSOR (NOT SHOWN)	296586R	296586R	296586R	296586R
31	EXHAUST DUCT ASSY	263420R	263420R	263420R	263420R
32	TOUCHUP PAINT, GREY	903598	903598	903598	903598
33	INDUCER MOTOR	903162	903162	903162	903162
34	SWITCH, PRESSURE, NO	632422	632422	632422	632422
35	GASKET, COLLECTOR PAN	689506	689506	689506	689506
36	GASKET, INDUCER MOTOR MOUNTING	689518	689518	689518	689518
37	HEAT EXCH. PANEL ASSY, 34"	293331R	-	-	-
	HEAT EXCH. PANEL ASSY, 38"	-	M0042504R	-	-
	HEAT EXCH. PANEL ASSY, 42"	-	-	M0042501R	M0042501R
38	SWITCH, LIMIT	626423	626446	626432	626432
39	COLLECTOR PAN ASSY	D10329R	D10328R	D10324R	D10324R
40	COMPLETE BURNER ASSY	293321R	293323R	293322R	293322R
41	BRACKET, EXT. SERV PT, HI-FLOW	298551R	298551R	298551R	298551R
42	ROLLOUT, FLAME	626547	626547	626547	626547
43	SENSOR, FLAME	632396	632396	632396	632396
44	BURNER, INSHOT	660812	660812	660812	660812
45	REPL. HAIL GUARD KIT (NOT SHOWN)	921213	921213	921213	921213
46	ORIFICE, MAIN BURNER, #43 DRILL (NOT SHOWN)	661043	-	661043	661043
	ORIFICE, MAIN BURNER, #45 DRILL (NOT SHOWN)	-	661045	-	-
47	MANIFOLD	664303	664305	664305	664305
48	DRIER, FILTER, BIFLOW	669762	669762	669762	669762
49	COVER, VENT	265040R	265040R	265040R	265040R
50	PANEL, WEATHER	263880	263880	263880	263880
51	SUPPORT, COIL, 34"	263394	-	-	-
	SUPPORT, COIL, 38"	-	263395	-	-
	SUPPORT, COIL, 42"	-	-	263396	263396
53	STRAP, FILTER/DRIER	258781	258781	258780	258780
54	COIL, INDOOR	283091R	D06255R	2B3721R	2B4001R
55	TXV, INDOOR	664343	664346	664350	664275
56	COMP, COPE, ZPS20K4E-PFV-230	920334	-	-	-
	COMP, COPE, ZPS30K4E-PFV-230	-	920335	-	-
	COMP, COPE, ZPS40K4E-PFV-230	-	-	920336	-
	COMP, COPE, ZPS49K4E-PFV-230	-	-	-	920337
57	SWITCH, HIGH PRESSURE (AUTO RESET)(NOT SHOWN)	632401	632401	632401	632401
58	PORT, HI FLOW, 3/8" R-410, A STYL (NOT SHOWN)	664329	664329	664329	664329
59	CORE, PORT, HI, FLOW, BRASS (NOT SHOWN)	664331	664331	664331	664331
60	VALVE, GAS, 2-STAGE, H.W.	624652	624652	624652	624652
61	GROMMET, COMPRESSOR, SCROLL (NOT SHOWN)	668530	668530	668530	668530
62	COMPRESSOR SOUND BLANKET (NOT SHOWN)	689792	689792	689792	689793
63	COIL, OUTDOOR	D06262R	2B3941R	2B3711R	2B5011R
64	INSULATED TOP RIGHT PAN ASSY	M0034707R	M0034707R	M0034707R	M0007286R
65	MOTOR, OUTDOOR FAN	622171	622468	622468	621990
	CONTROLLER, FAN MOTOR	-	622469	622469	-
66	FAN, BLADE	667357	667351	667351	667351
67	FAN, GRILLE, 24"	669335	669335	669335	669335
68	BRACKET, AMBIENT (NOT SHOWN)	296585R	296585R	296585R	296585R
69	GUARD, COIL (FORMED)	2A8453R	2A8454R	2B4611R	2B4871R
70	COMPRESSOR BOLTS (NOT SHOWN)	600400	600400	600400	600400
71	IGNITOR	903179	903179	903179	903179
72	PANEL, BLOWER DISCHARGE, 34"	281493	-	-	-
	PANEL, BLOWER DISCHARGE, 38"	-	281494	-	-
	PANEL, BLOWER DISCHARGE, 42"	-	-	281495	281495
73	BLOWER SHELF	283932	283932	283932	283932
74	DIVIDER PANEL BRACKET	2B1891	2B1891	2B1891	2B1891
75	CHANNEL, DRAIN (Not available w/ 1 piece top pan)	279722R	279722R	279722R	279722R
77	ACCESS FITTING	663812	663812	663812	663812

DF6SF DUAL FUEL HEAT PUMP

ITEM	DESCRIPTION	X24K-072C 920986	X36K-100C 920988	X48K-120C 920990	X60K-120C 920992
78	COVER, HEADER, 34"	M0034205R	-	-	-
	COVER, HEADER, 38"	-	M0034214R	-	-
	COVER, HEADER, 42"	-	-	M0034209R	M0034209R
79	DOOR, ACCESS, 34"	296633R	-	-	-
	DOOR, ACCESS, 38"	-	296648R	-	-
	DOOR, ACCESS, 42"	-	-	M0034208R	-
	DOOR, ACCESS, 42"	-	-	-	M0034216R
80	TXV, OUTDOOR	664344	664344	664348	664348
81	CONTROL BRACKET	298591	298591	298591	298591
82	SWITCH, LOW PRESSURE (NOT SHOWN)	632393	632393	632393	632393
83	TERMINAL BOARD	632475	632475	632475	632475
84	ONE-PIECE TOP PAN	M0034722	M0034722	M0034722	M0034723



NORDYNE
COMPLETE COMFORT. GENUINE VALUE.

Specifications & illustrations subject to change without notice or incurring obligations.
O' Fallon, MO | Printed in U.S.A. (10/10)



7091700 (Replaces 7091370)