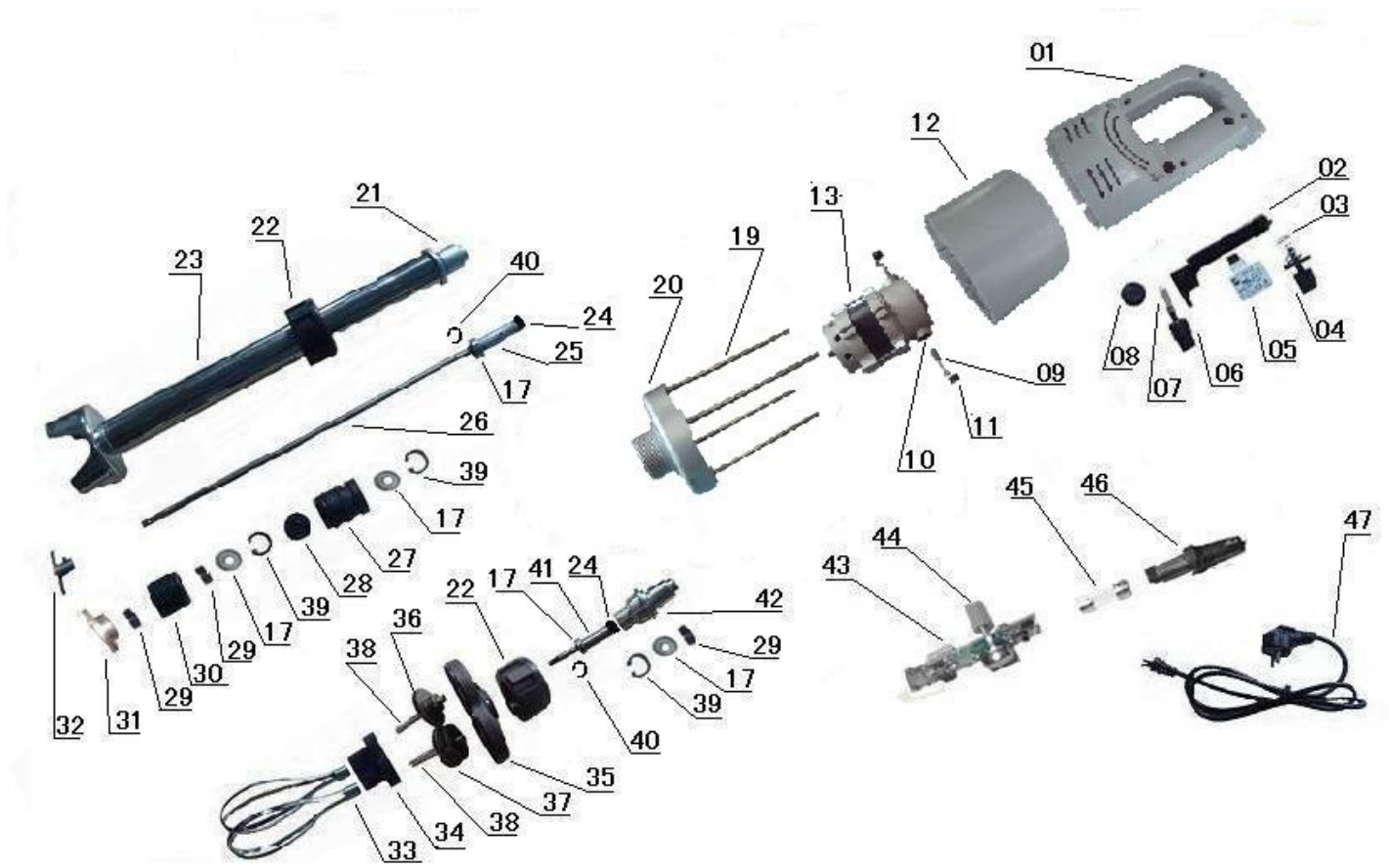


# Parts Breakdown

Model **BL-CN-0559** 28705



# Parts Breakdown

## Model BL-CN-0559 28705

Item No.	Description	Position	Item No.	Description	Position	Item No.	Description	Position
74353	Cover Left and Right for 28705	1	74368	Bearing 608 for 28705	17	74383	Egg Beater Holder for 28705	33
74354	Switch Handle for 28705	2	74369	Motor for 28705	18	74384	Transmission Holder for 28705	34
74355	Push-Button for 28705	3	74370	Stud for 28705	19	74385	Transmission Cover for 28705	35
74356	Spring 2 for 28705	4	74371	Cover for 28705	20	74386	Transmission Gear for 28705	36
74357	Switch (18A115V) for 28705	5	74372	Splicing Sleeve for 28705	21	74387	Helix Gear for 28705	37
74358	Lock Push-Button for 28705	6	74373	Section Header for 28705	22	74388	Gear Shaft for 28705	38
74359	Spring 1 for 28705	7	74374	Plastic Nuts for 28705	23	74389	Circlip 2 for 28705	39
74360	Disc for 28705	8	74375	Tube for 28705	24	74390	Circlip 1 for 28705	40
74361	Brush for 28705	9	74376	Gear for 28705	25	74391	Shaft for 28705	41
74362	Brush Cover for 28705	10	74377	Mandrel Bar for 28705	26	74392	Connector for 28705	42
74363	Cover for 28705	11	74378	Oil Seal 25 for 28705	27	74393	Speed Switch for 28705	43
74364	Motor-Cover for 28705	12	74379	Bearing Block for 28705	28	74394	Speed Switch Knob for 28705	44
41737	Rectifier for 28705	13	74380	Oil Seal 18 for 28705	29	74395	Fuse Holder for 28705	45
74365	Stator for 28705	14	74381	Bearing Block for 28705	30	74396	Fuse for 28705	46
74366	Motor Shell Cover for 28705	15	74382	Sealed Cap for 28705	31	74397	Power Wire for 28705	47
74367	Screw M4x65 for 28705	16	41412	Cutter for 28705	32			