



High Temp Dishwasher
Model CD-GR-1500
Item 46321
Instruction Manual



Revised - 01/09/2020



Toll Free: 1-800-465-0234
Fax: 905-607-0234
Email: service@omcan.com
www.omcan.com



Table of Contents

Model CD-GR-1500

| Section | Page |
|---|-------------|
| General Information ----- | 3 - 4 |
| Technical Specifications ----- | 5 - 7 |
| Safety and Warranty ----- | 8 - 9 |
| Installation ----- | 10 - 16 |
| Operation ----- | 17 - 19 |
| Maintenance ----- | 19 - 20 |
| Troubleshooting ----- | 21 - 22 |
| Parts Breakdown ----- | 23 - 33 |
| Electrical Schematics ----- | 34 |
| Notes ----- | 35 - 37 |
| Installation Requirements and Checklist ----- | 38 |
| Warranty Registration ----- | 39 |



General Information

Omcan Manufacturing and Distributing Company Inc., Food Machinery of America, Inc. dba Omcan and Omcan Inc. are not responsible for any harm or injury caused due to any person's improper or negligent use of this equipment. The product shall only be operated by someone over the age of 18, of sound mind, and not under the influence of any drugs or alcohol, who has been trained in the correct operation of this machine, and is wearing authorized, proper safety clothing. Any modification to the machine voids any warranty, and may cause harm to individuals using the machine or in the vicinity of the machine while in operation.

CHECK PACKAGE UPON ARRIVAL

Upon receipt of an Omcan shipment please inspect for external damage. If no damage is evident on the external packaging, open carton to ensure all ordered items are within the box, and there is no concealed damage to the machine. If the package has suffered rough handling, bumps or damage (visible or concealed), please note it on the bill of lading before accepting the delivery and contact Omcan within 24 hours, so we may initiate a claim with the carrier. A detailed report on the extent of the damage caused to the machine must be filled out within three days, from the delivery date shown in the shipping documents. Omcan has no recourse for damaged products that were shipped collect or third party.

Before operating any equipment, always read and familiarize yourself with all operation and safety instructions.

Omcan would like to thank you for purchasing this machine. It's of the utmost importance to save these instructions for future reference. Also save the original box and packaging for shipping the equipment if servicing or returning of the machine is required.

Omcan Fabrication et distribution Compañie Limité et Food Machinery d'Amérique, dba Omcan et Omcan Inc. ne sont pas responsables de tout dommage ou blessure causé du fait que toute personne ait utilisé cet équipement de façon irrégulière. Le produit ne doit être exploité que par quelqu'un de plus de 18 ans, saine d'esprit, et pas sous l'influence d'une drogue ou d'alcool, qui a été formé pour utiliser cette machine correctement, et est vêtu de vêtements de sécurité approprié. Toute modification de la machine annule toute garantie, et peut causer un préjudice à des personnes utilisant la machine ou des personnes à proximité de la machine pendant son fonctionnement.

VÉRIFIEZ LE COLIS DÈS RÉCEPTION

Dès réception d'une expédition d'Omcan veuillez inspecter pour dommages externes. Si aucun dommage n'est visible sur l'emballage externe, ouvrez le carton afin de s'assurer que tous les éléments commandés sont dans la boîte, et il n'y a aucun dommage dissimulé à la machine. Si le colis n'a subi aucune mauvaises manipulations, de bosses ou de dommages (visible ou cachée), notez-le sur le bond de livraison avant d'accepter la livraison et contactez Omcan dans les 24 heures qui suivent, pour que nous puissions engager une réclamation auprès du transporteur. Un rapport détaillé sur l'étendue des dommages causés à la machine doit être rempli dans un délai de trois jours, à compter de la date de livraison indiquée dans les documents d'expédition. Omcan n'a aucun droit de recours pour les produits endommagés qui ont été expédiés ou cueilli par un tiers transporteur.

General Information

Avant d'utiliser n'importe quel équipement, toujours lire et vous familiariser avec toutes les opérations et les consignes de sécurité.

Omcan voudrais vous remercier d'avoir choisi cette machine. Il est primordial de conserver ces instructions pour une référence ultérieure. Également conservez la boîte originale et l'emballage pour l'expédition de l'équipement si l'entretien ou le retour de la machine est nécessaire.

Omcan Empresa De Fabricacion Y Distribucion Inc. Y Maquinaria De Alimentos De America, Inc. dba Omcan y Omcan Inc. no son responsables de ningun daño o perjuicio causado por cualquier persona inadecuada o el uso descuidado de este equipo. El producto solo podra ser operado por una persona mayor de 18 años, en su sano juicio y no bajo alguna influencia de droga o alcohol, y que este ha sido entrenado en el correcto funcionamiento de esta máquina, y ésta usando ropa apropiada y autorizada. Cualquier modificación a la máquina anula la garantía y puede causar daños a las personas usando la máquina mientras esta en el funcionamiento.

REVISE EL PAQUETE A SU LLEGADA

Tras la recepcion de un envio Omcan favor inspeccionar daños externos. Si no hay daños evidentes en el empaque exterior, Habra el carton para asegurarse que todos los articulos solicitados estén dentro de la caja y no encuentre daños ocultos en la máquina. Si el paquete ha sufrido un manejo de poco cuidado, golpes o daños (visible o oculto) por favor anote en la factura antes de aceptar la entrega y contacte Omcan dentro de las 24 horas, de modo que podamos iniciar una reclamación con la compañía. Un informe detallado sobre los daños causados a la máquina debe ser llenado en el plazo de tres días, desde la fecha de entrega que se muestra en los documentos de envío. Omcan no tiene ningun recurso por productos dañados que se enviaron a recoger por terceros.

Antes de utilizar cualquier equipo, siempre lea y familiarizarse con todas las instrucciones de funcionamiento y seguridad.

Omcan le gustaría darle las gracias por la compra de esta máquina. Es de la mayor importancia para salvar estas instrucciones para futuras consultas. Además, guarda la caja original y el embalaje para el envío del equipo si servicio técnico o devolución de la máquina que se requiere.



Technical Specifications

| | |
|--|--|
| Model | CD-GR-1500 |
| Voltage | 220-240V / 60Hz |
| Max Power | 10.5 Kw |
| Max Amperes | 44 A |
| Minimum Inlet Water Temperature | 40°C / 104°F |
| Rinse Flow Pressure | 20 psi ± 5 |
| Boiler Heating Element | 7.5 kW |
| Tank Heating Element | 6 kW |
| Boiler Capacity | 7.4 L |
| Tank Capacity | 58 L |
| Washing Pump Power | 1.5 HP |
| Overall Dimensions | 29.5" x 34.6" x 72" / 750 x 880 x 1830mm |
| Basket Dimensions | 19.7" x 19.7" / 500 x 500mm |
| Washing Cycles | 103 / 163 / 223 sec. |
| Rinse Cycle | 16 sec. |
| Peristaltic Detergent Pump | Standard |
| Peristaltic Rinse Aid Pump | Standard |
| Boiler Thermofuse | 105°C / 221°F |
| Tank Thermofuse | 99°C / 210.2°F |
| Boiler Thermometer | Standard |
| Tank Thermometer | Standard |
| Pressure Gauge | Standard |
| Door Clearance | 15.7" / 400mm |
| Max Glass | 15.6" / 395mm |
| Max Dish | 15.7" / 400mm |
| Net Weight | 244.7 lbs. / 111 kgs. |
| Gross Weight | 284.4 lbs. / 129 kgs. |
| Item Number | 46321 |

Technical Specifications

ELVIOMEX
PROFESSIONAL WARE WASHING MACHINES

ALFA ELVIOMEX s.a.

Model : CD-GR-1500

Wash Time (Sec) :
103 / 163 / 223

Minimum Wash
Temp. : 165 oF (74 oC)

Rinse Time
(Sec) : 16

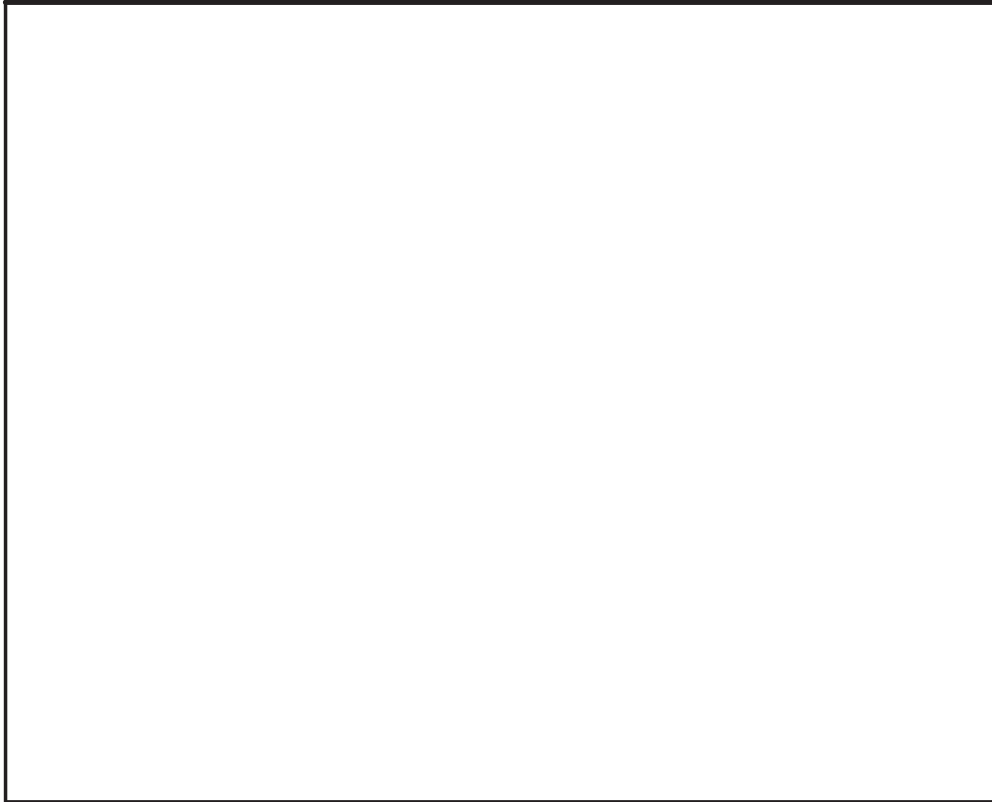
Minimum Rinse
Temp. : 165 oF (74 oC)

Inlet Water
Pressure : 138 ± 34 kPa
(20 ± 5 psi)



Technical Specifications

PRODUCT SERIAL NUMBER

A large, empty rectangular box with a thin black border, intended for the user to enter the product serial number.

Safety and Warranty

THE FOLLOWING SYMBOLS INDICATE IMPORTANT INFORMATION THROUGHOUT THIS MANUAL.



Caution symbols indicate action or condition that can result in damage to the machine.



Not approved symbols indicate action or condition that will diminish the optimum operation of the machine.



Approved symbols indicate action or condition that is safe and correct and should be followed.



Warning symbols indicate action or condition that can be hazardous.



Note symbols indicate important information that should be followed for installing or operating the machine.

INDICATIONAL WARNINGS - CAUTIONS - NOTES



Machine installation must comply with all local Health, Plumbing, Electrical and Safety codes.



All Plumbing connections ARE PRIOR to the electrical installations and must be performed by qualified service personnel otherwise there is risk of damages to heating elements.



Problems or Damages caused due to improper installation are not covered by the Limited Warranty.



All debris from the water supply line must be flushed before connecting it to the machine. Debris can damage the machine supply valves.



Handle with care when lifting or moving to avoid damage or leakings.



Plumbing and Electrical connections must allow the machine to move for service or cleaning.



Before any electrical or service operation disconnect the main electrical supply and lock it out in order to clearly indicate that there is work in progress.

Safety and Warranty

1. **All pumping connections must be made prior to the electrical connection as otherwise there is high risk of damages to heating elements.**
Damages due to negligence installation are not covered by the warranty.
2. Be careful when lifting or moving the dishwasher to avoid leaks or damages.

Do not use granular detergent. Poor results usually occur.

Do not use caustic products. This will void the guarantee.

Be sure all electrical supply specifications correspond to information label on machine.

The manufacturer/ distributor is not responsible for any possible damages or risks due to improper connection of this appliance.

- I. Inspect the packaging for external damages.
- II. Check that all the following accessories are inside the machine.
 - 1 Glass basket.
 - 1 Dish basket.
 - 1 Cutlery basket.
 - 1 Pressure reducer valve (PRV).
 - 4 leveling feet.
 - 1 User manual.
 - 1 Extended warranty brochure.

1 YEAR PARTS AND LABOUR WARRANTY

Within the warranty period, contact Omcan Inc. at 1-800-465-0234 to schedule an Omcan authorized service technician to repair the equipment locally.

Unauthorized maintenance will void the warranty. Warranty covers electrical and part failures, not improper use.

Please see <https://omcan.com/disclaimer> for complete info.

WARNING:

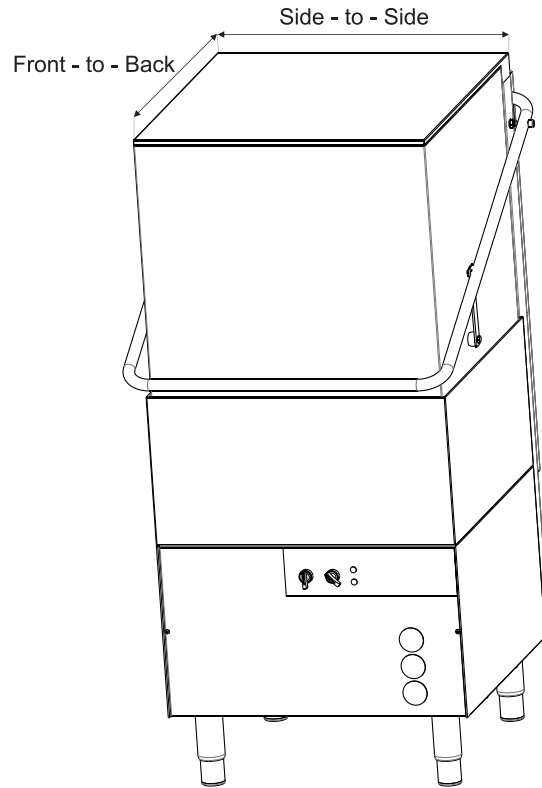
The packaging components are classified as normal solid urban waste and can therefore be disposed of without difficulty.

In any case, for suitable recycling, we suggest disposing of the products separately (differentiated waste) according to the current norms.

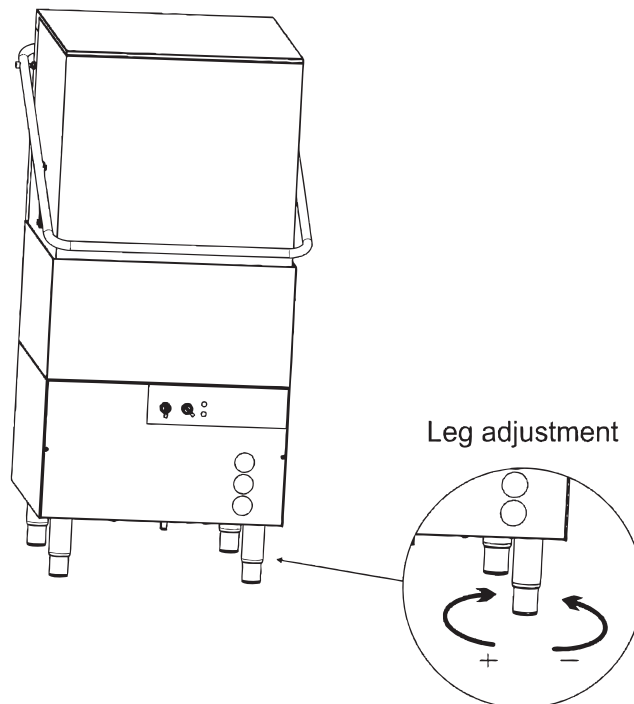
DO NOT DISCARD ANY PACKAGING MATERIALS IN THE ENVIRONMENT!

Installation

PLACEMENT



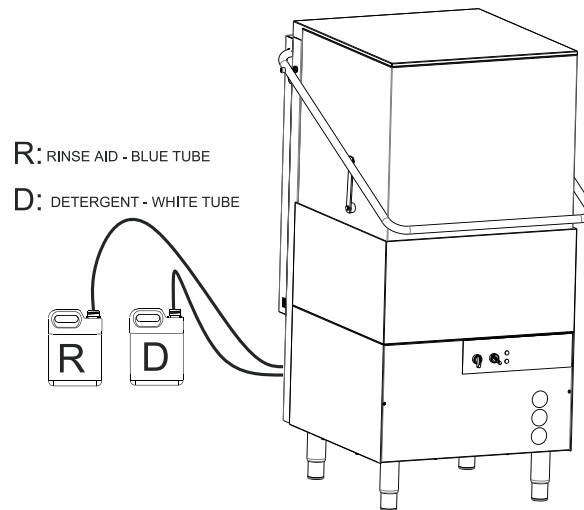
LEVEL THE MACHINE



INSTALLATION SUGGESTIONS

- Place the dishwasher in the desired location.
- The appliance should be leveled. Adjustable feet are provided for this adjustment.
- Level the machine front to back, and right to left.

PLACEMENT - CHEMICAL CONTAINERS



Chemical supply containers must be placed as close as possible to the machine and must not be elevated.



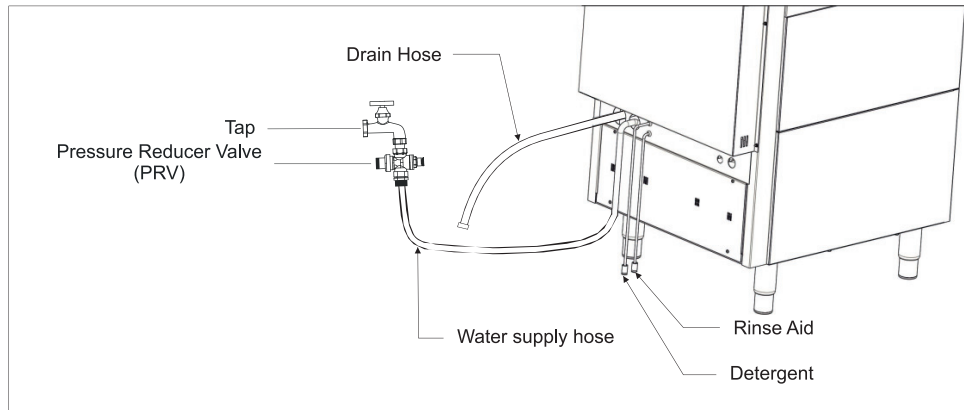
Reposition the chemical tubing at the back of the machine before placing the machine to its permanent position.

The unit should be installed by licensed and approved personnel according to all local codes.

This dishwasher is delivered with water inlet and outlet hoses.

Installation

WATER SUPPLY CONNECTION



ATTENTION: Connection with the water supply should be made according to all applicable codes.



Machine must be connected to hot water source. Minimum incoming water temperature should be 40°.

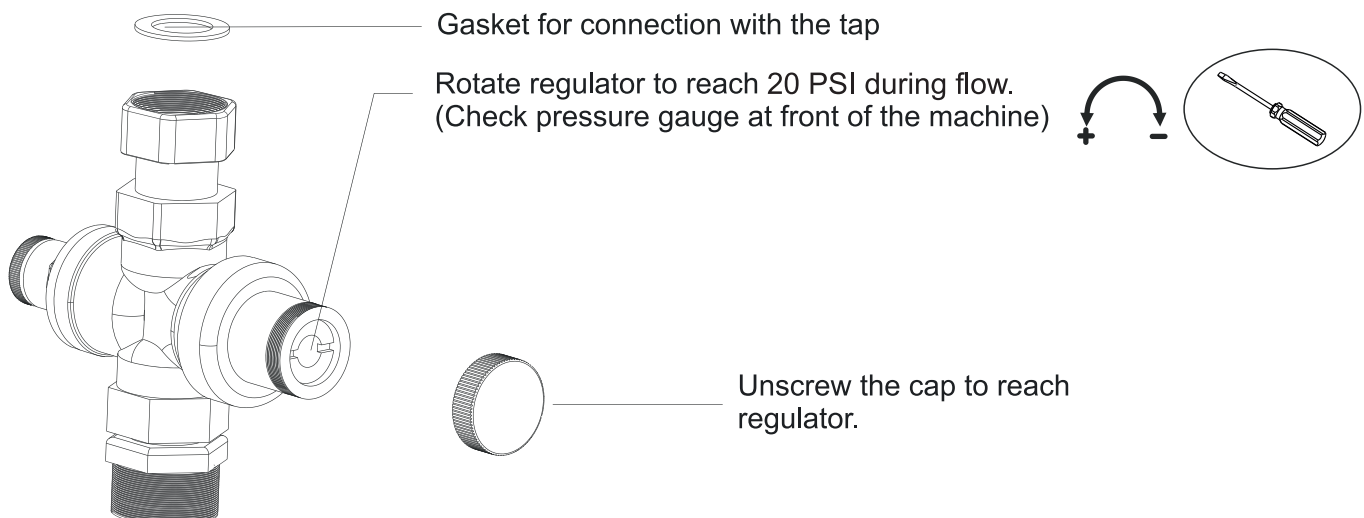


A Pressure Regulator Valve must be inserted between the machine water inlet and the water source. Water pressure during flow (not static), must be regulated to 20 PSI. During pressure regulation please check the pressure gauge at the front of the machine.

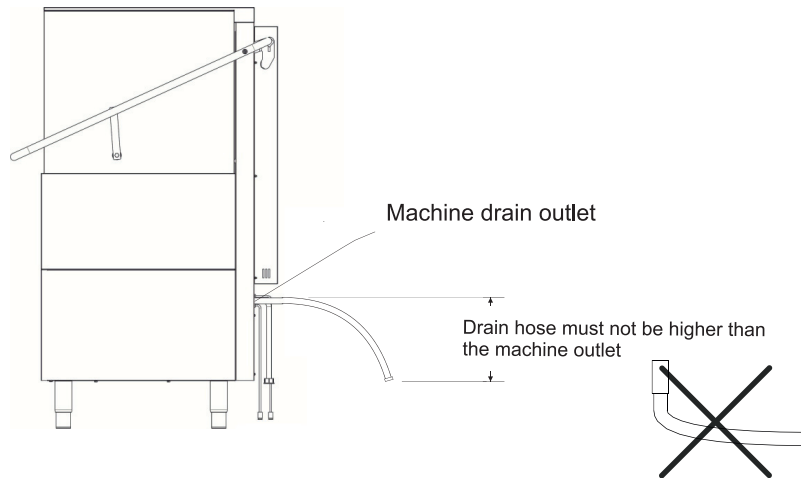
This dishwasher intended for use with a hot water supply but will also operate (at slightly reduced hourly capacity) with a cold water supply.

- The water supply hose/pipe should be OD 14mm x ID 10mm and terminate in a 3/4" NPT fitting (not garden hose).
- The water supply hose/pipe should be flushed before final connection.
- **Minimum flow pressure is 15 PSI and maximum is 25 PSI.**
- Connect hose at the 3/4" NPT fitting on the water supply line.

PRESSURE REGULATOR VALVE ADJUSTMENT



DRAINAGE CONNECTION



Do not add extension to the drain hose otherwise warranty is void.

Outflow is accomplished by gravity (natural flow) in the CD-GR-1500. The outlet hose should be connected either directly to a floor drain or drain which must not be higher than the level of the outlet at the rear of the machine. An open drain connection or one to a vented drain pipe is recommended.

- I. Connect the drain hose to the main draining.
- II. Connection must be made if the same flow with the draining pipe.

ATTENTION:

- Drain connection to a venting dedicated drain pipe is suggested.
- It is strongly advised NOT to connect the drain hose into the sink's draining.
- If an extension is added to the drain hose the warranty is voided.

ATTENTION:

- Make sure that no residuals remain to the water supply line before connecting it to the machine.
- Plumbing connections must be made in such way that will allow the machine to be moved for service and cleaning.
- PRV MUST be installed and adjust at 20 PSI otherwise the warranty is voided.

| Min water inlet temp. | Operating flow pressure. | Min wash temperature. | Min rinse temperature. |
|-----------------------|--------------------------|-----------------------|------------------------|
| 40°C | 20 ±5 PSI | 165°F / 74°C | 165°F / 74°C |

- Connect the PRV valve in the water supply shut off valve.
- Connect the water supply hose to the PRV in one side and in the machine on the other side.

Attention: source water hardness must not intervene 10°F / 6 Gd.

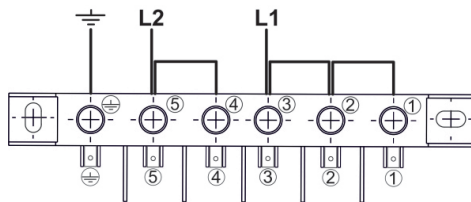
Installation

ELECTRICAL CONNECTION

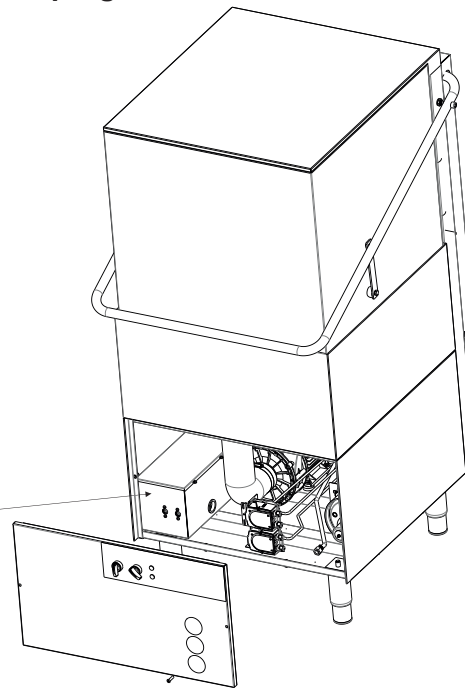
Attention: Before make any electrical connection or service, disconnect the main electrical supply and lock it out in order to clearly indicate that there is work in progress.



Electrical Connection



Electrical Box



- I. Open the lower front cover (2 bolts).
- II. Loosen the two nuts of the electrical box cover and remove.
- III. Connect the cable to the terminal block (Attention: strain relief knockout must be placed by the installer).

Caution: 15 cm loop of wire must be left inside the machine in order to allow servicing.

- IV. Replace the top cover.
- V. Replace and secure the lower front cover.

DETERGENT AND RINSE AID REGULATION.

- I. Open the lower front cover (2 bolts).
- II. Adjust the quantity by regulating the dosing (xxxxxx ml / rotation).
- III. Make sure that the chemical feeders' hoses are not out of the right position.
- IV. Replace the front lower cover.

RINSE-AID PUMP

This model has an automatic rinse-aid pump for use with a container of liquid rinse-aid. The rinse-aid pump is a peristaltic regulated (looks exactly like the detergent pump) and can be regulated by a screw above and on the right of the glass cover. The regulation can be from 0 lt/hour to 0,7 lt/hr.

Both pumps are mounting on an inox bracket with the regulating screws facing the cover and are marked with two yellow stickers.

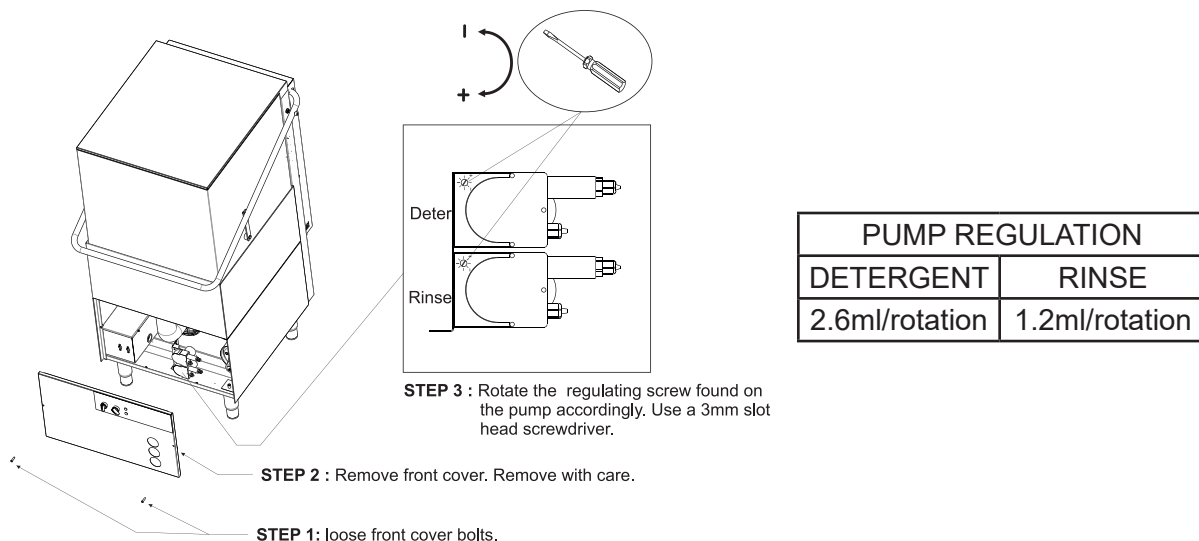
Before you perform these adjustments, turn off the power supply.

The dozer is adjusted from the manufacturer's premises at its maximum value for easy initial priming and must be adjusted accordingly (depending on water hardness, how dirty the dishes are, and the detergent used).

To reduce (-) the amount of rinse aid, turn the center screw clockwise. To increase (+), turn counterclockwise.
Note: this is a 15 revolution adjusting screw to provide fine adjustments as required.

Suggestion for initializing personnel: After priming system by operating machine through several cycles, rotate adjusting screw gently to full closed position (clockwise) and adjust (counter-clockwise) about 7 full revolutions. Empty wash tank and refill with fresh water. Operate for two or three cycles and verify concentration level. Adjust dozer again if required to achieve final desired results.

ADJUSTMENT OF PERISTALTIC PUMPS



Installation

AUTOMATIC FILLING OF DETERGENT

This model has an automatic detergent pump for use with a container of non foaming liquid detergent. The detergent pump is a peristaltic regulated (looks exactly like the rinse-aid pump) and can be regulated by a screw above and on the right of the glass cover. The regulation can be from 0 lt/hour to 3,0 lt/hr.

MANUAL FILLING OF DETERGENT

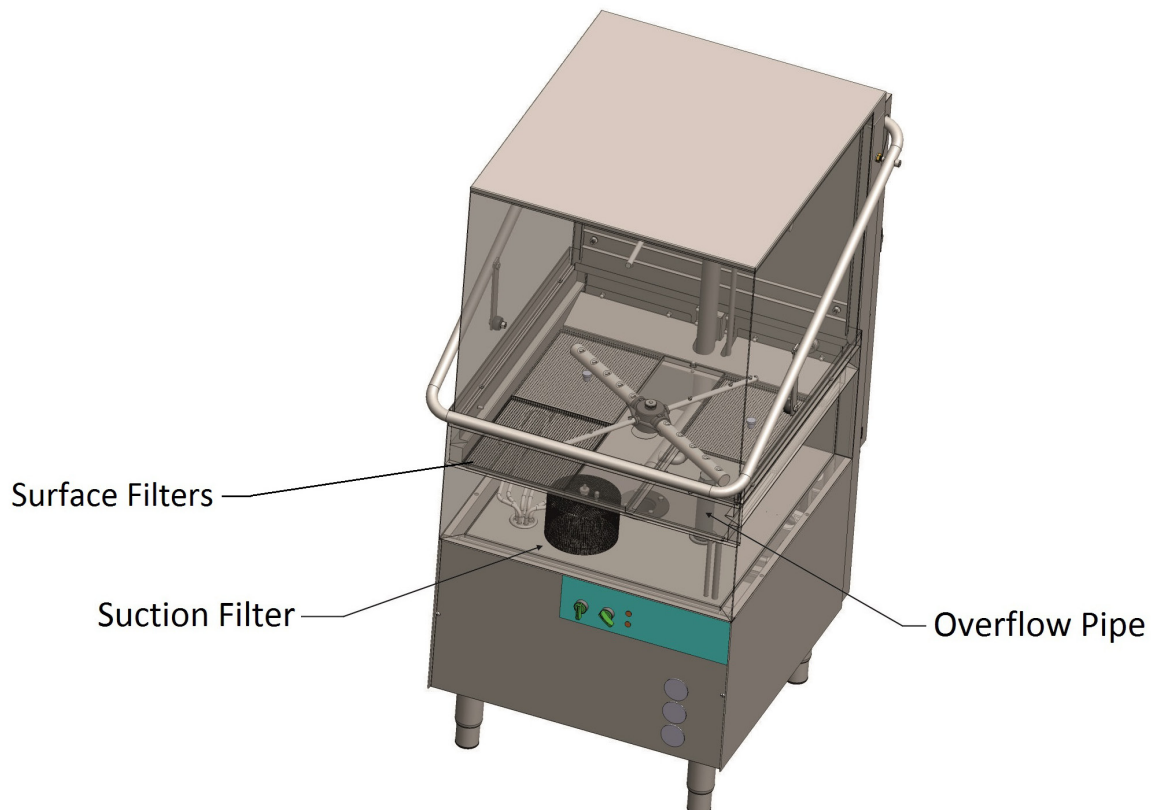
Use only non-foaming detergent suitable for commercial dishwashers. In the event of non use or malfunction of the automatic detergent injection system, put the detergent suppliers recommended amount directly into the wash compartment tank after the machine has reached its operating temperature.

The correct dosage depends on the water hardness and the amount of residue on the dishes. Follow the detergent manufacturer's recommendations. Less detergent deters good washing results and more detergent usually does not provide better results, but rather more unnecessary consumption and environment pollution.

SURFACE FILTERS - PUMP FILTER - OVERFLOW PIPE



Do not remove the internal filter (pump filter) if the tank is not empty.



INSTRUCTIONS FOR REGULAR OPERATION

The appliance is intended to clean dishes, cups, glasses, cutlery, etc. Be sure the items placed to be washed are suitable for dishwashing. Cutlery should be cleaned of heavy food residues, or soaked if not washed right after use. This machine is not intended for use with items which were used with acids, mineral oil, grease, gasoline or colors.

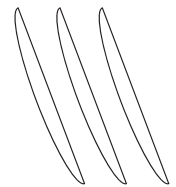
PREPARATION OF DISHES FOR WASHING.

For best results avoid allowing food residues to dry. Remove bulk food residues, olive pips, lemon peels, tooth picks, etc., before placing the dishes in the basket.

If washing is delayed we recommend that you soak dishes and/or glasses which have food residues.

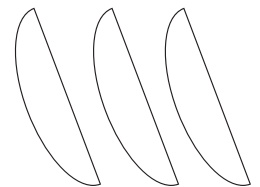
FILLING OF BASKET

Place glasses and cups, with the opening facing down and not piled one on top of the other, in the appropriate baskets. Glasses should not touch each other (damage to glass or stains due to contact may occur).



DISHES

Plates should be stacked vertically in appropriate baskets and not touching each other, look to the side of the baskets to see the recommended loading capacity.

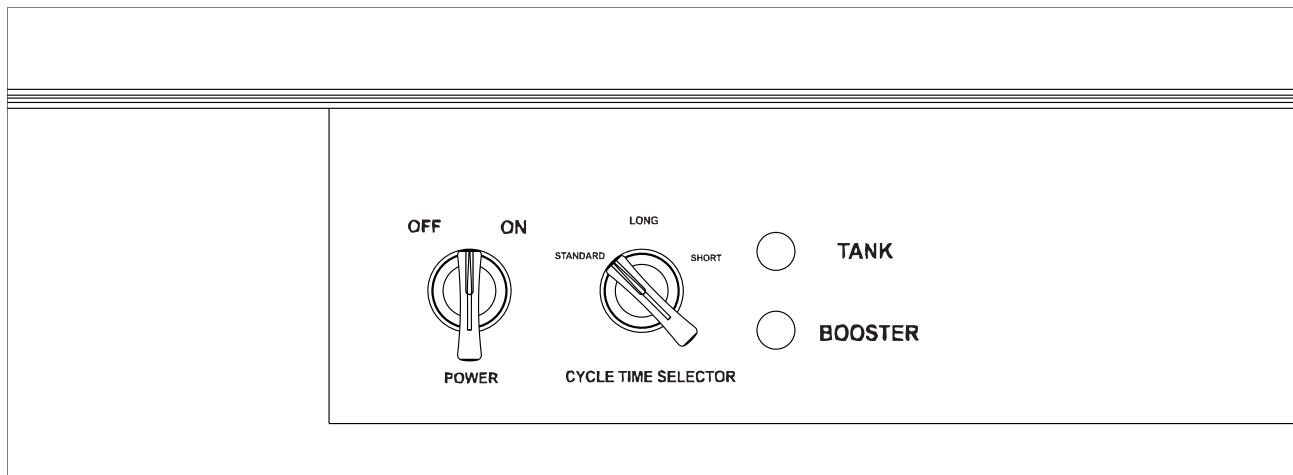


BOWLS & PANS

Place tableware in the supplied plastic basket, with handles downwards or placed freely in a level plastic basket.

In every case, avoid overloading the basket.

DAILY OPERATION



Operation

- Check the chemical containers to be sufficient full.
- Check that the pump inlet filter has been placed in the correct position if it was removed for cleaning.
- Check that the overflow stand pipe is inserted correctly in its outlet.
- Close door.
- Turn power switch to “ON” (Switches should now illuminate).
- The dishwasher will fill automatically.
- The booster indicator should come on to indicate that the inlet water to the rinse and fill system is being heated to the required rinse temperature (usually 195°F / 91°C).
- When the booster water has reached the correct temperature, the corresponding light switches off and the wash tank light comes on if the wash water temperature is not sufficiently hot (usually 165°F / 74°C).
- At initial daily start, allow about 10 to 20 minutes for machine to stabilize water temperatures to their proper temperatures.



After warm-up, one initial wash cycle should be performed to thoroughly mix soap and water and be sure unit is fully warmed up and ready to wash properly.

- After initial warm-up, when all heater lights are off, the dishwasher is ready to wash.



If door is opened during operation, the safety control will turn off the timer. Washing or rinsing will restart from beginning of wash cycle.

- Open the door, insert the basket with the items (dishes, glasses, etc.) noting that heavy food residue has been removed. (If the automatic soap injection system is not used, pour the proper amount of liquid detergent manually into the wash tank).
- To start the washing program, select the program desired and close the door. The automatic program commences, with the green program indicator light in the program selector switch changing from flashing to steady.

| Program | Wash time | Rinse time |
|----------|-----------|------------|
| Short | 103 sec. | 16 sec. |
| Standard | 163 sec. | 16 sec. |
| Long | 223 sec. | 16 sec. |

This unit is equipped with a positive rinse temperature control and will not advance from wash to rinse unless the rinse water is at the preset temperature usually about 195°F / 91°C.

Attention:

- The washing cycle time may be extended until the final rinse temperature reach 165°F / 74°C.
- Let the dishes and glasses to dry out of the dishwasher.
- Pay attention on removing the basket after the washing cycle as it may be HOT.

Operation

- When the program is finished, the green program light returns to flashing.
- Promptly open the door and remove the basket with the clean items. Use caution with hot items.
- Allow to dry.

If, after washing, there are stains from dirt or water spots, the cause may be one of the following:

- Wrong ratio of detergent to water.
- Rinsing water with very high mineral content.
- Improper quantity of rinse-aid.
- Wrong arrangement of items in the basket.
- Low water pressure during rinsing.
- Low water temperature during washing.
- Clogged or miss-positioned filters.
- Clogged jets.

Note

- The wash temperature must be within $\geq 74^{\circ}\text{C}$ & $\leq 84^{\circ}\text{C}$ and the rinse temperature must be within $\geq 74^{\circ}\text{C}$ & $\leq 91^{\circ}\text{C}$.
- Please check during the operation that the rinse water pressure is within its limits (20 ± 5 psi).



Do not remove the surface filters when machine is turned on. The heating elements under the filters can cause burn.

Maintenance

SHUTTING DOWN AND DRAINING – DAILY MAINTENANCE OPERATION

1. Turn the power switch into OFF position.
2. Remove the surface filters.



Attention: Do not remove internal filters if tank is not empty.

3. Remove the overflow pipe and empty the tank.
4. Remove and clean the pump filter under running water.



Attention: Do not use any metal sponge to scratch the filters or the dishwasher surface.

5. Rinse the washing compartment to remove any dirt residuals.
6. Reassemble the parts in reverse order.



Attention: The appliance should never operate without the pump filter in place.

Maintenance

MAINTENANCE / CARE / REPAIR

Proper operation and safe use may be ensured only through the correct use of the appliance, as well as the compliance with the operation instructions, the corresponding specifications and the care and cleaning indications.

Notice: Before cleaning or performing any maintenance, other than daily interior cleaning, power and water supply must be turned off. The appliance should never be sprayed with water or high pressure cleaning solution, because any water or solution which may get into the electrical components will affect operation of the appliance as well as present a potential for electrical shock.

No safety systems should be disabled.

REGULAR MAINTENANCE AND CLEANING WORKS

Depending on local water hardness, the nozzles on the rinse arms should be cleaned regularly. Caution must be exercised to not damage the nozzles.

PAY ATTENTION TO THE CORRECT POSITION OF FILTERS AND WASH ARM INSTALLATIONS AND BE SURE NON-STICK BUSHINGS ARE NOT WORN.

Clean the appliance with warm water and conventional cleaning aids.

Stainless steel parts should never be cleaned them with “**steel wool**”, wire brush, etc, since even the lightest contacts on the surfaces with steel may contaminate the stainless steel and cause rust formation. Use brushes made of polymer plastic, natural bristles, or thin brass wire. Always keep brush movements in line with grain in the Stainless Steel so that you will not affect the appearance. Finally, rinse with clean water and dry thoroughly.

We remind you that corrosion (rust formation) on stainless steel surfaces is not created by itself, but rather due to the use of improper cleaning products (e.g. whitening or particularly caustic cleaning products based on chlorine). Occasionally calcium sediments will form on the internal walls of the dishwasher (due to mineral particles in the water), which may affect the correct operation of the appliance and requiring regular removal.

SPARE PARTS, ACCESSORIES AND COMPONENTS

Spare parts and components are usually available at the authorized local service agency, or directly from Omcan, In case of claims or complaints, you must supply the model and serial number of the appliance / machine found on the specification label of the appliance.

Troubleshooting

| PROBLEM | CAUSE | SOLUTION |
|--|--|---|
| The dishwasher does not operate. | No power to the machine. | Check the connection. Breaker or fuse has not been activated or is faulty. |
| | Control switch S1 not activated. | Turn switch S1 on. |
| | Switch S1 is faulty. | Refer to the authorized service agency, local dealer, or Omcan. |
| | Water supply not turned on. | Turn the supply on. |
| | Door is not closed. | Close the door. |
| | Water inlet valve is faulty. | Refer to the authorized service agency, local dealer, or Omcan. |
| | Fill water runs continuously. | Overflow drain stand pipe not installed properly. |
| Verify that overflow drain stand pipe is installed properly with overflow slots upwards. | | |
| The appliance operates, but the green operating pilot light does not illuminate. | The pilot light is faulty. | Change the pilot light. |
| | Wire lead to lamp disconnected. | Reconnect power lead. |
| | Lamp is out of it's socket. | Insert lamp. |
| Booster not heating. | Switch S1 or main switch or fuse has not been activated. | Check the switch S1 of the appliance and the main switch or fuse. |
| | The booster thermostat is faulty. | Refer to the authorized service agency, local dealer, or Omcan. |
| | The booster 105°C thermal fuse is faulty. | |
| | Pressure switch is faulty. | |
| Booster heating operates, but pilot light does not turn on. | Booster heating contactor is faulty. | Change the pilot light. Reconnect power lead. |
| | The pilot light is faulty. | |
| | Wire lead to lamp disconnected. | |
| Wash tank heating does not operate. | Lamp is out of it's socket. | Refer to the authorized service agency, local dealer, or Omcan. |
| | The wash tank thermostat is faulty. | |
| | The 90°C thermal fuse is burned or defective. | |

Troubleshooting

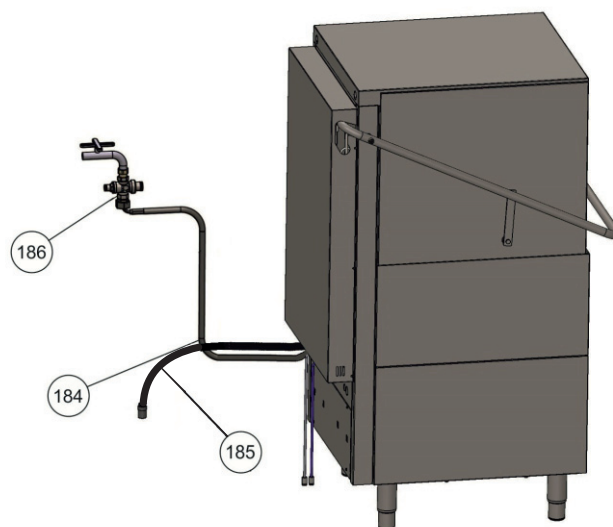
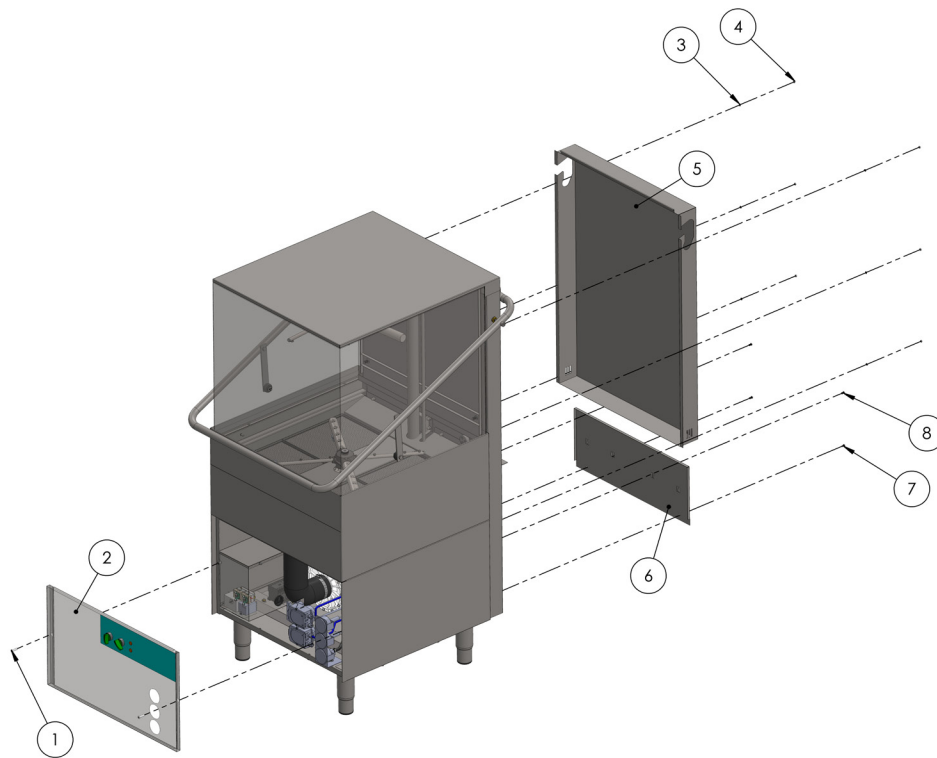
| | | |
|--|--|---|
| Pump motor does not operate. | Main switch or fuse is not activated. | Activate main switch or fuse. |
| | The door is not closed. | Close the door. |
| | Main relay is faulty. | Refer to the authorized service agency, local dealer, or Omcan. |
| | Pump motor is faulty. | |
| Program timer is faulty. | | |
| Motor operates, but pump does not rotate. | An object has jammed the pump impeller. | Loosen deposits by rotating screw on rear side of pump motor. |
| | Hard water deposits or detergent have been petrified following non operation of the appliance. | |
| Washed items do not dry (dishes, glasses, etc.) | Rinse aid supply is empty. | Replace or refill rinse aid container. |
| | Rinse aid "dozer" valve is defective. | Refer to the detergent supplier, authorized service agency, local dealer, or Omcan. |
| | Timer is faulty. | Refer to the authorized service agency, local dealer, or Omcan. |
| | Rinse arms (upper and/or lower) do not rotate. | Clean nozzles. |
| Replace Teflon bushings if worn. Note: take caution to not install rinse arm without bushings. | | |

REFERENCE

| Item Number | Model Number | Description | Manufacturer Model Number |
|-------------|--------------|---|---------------------------|
| 46321 | CD-GR-1500 | Dishwasher Heavy Duty 20" x 20" / 508mm x 508mm 208-240V/60/1 CE cETLus TUV NSF Certified | C1500 NSF |

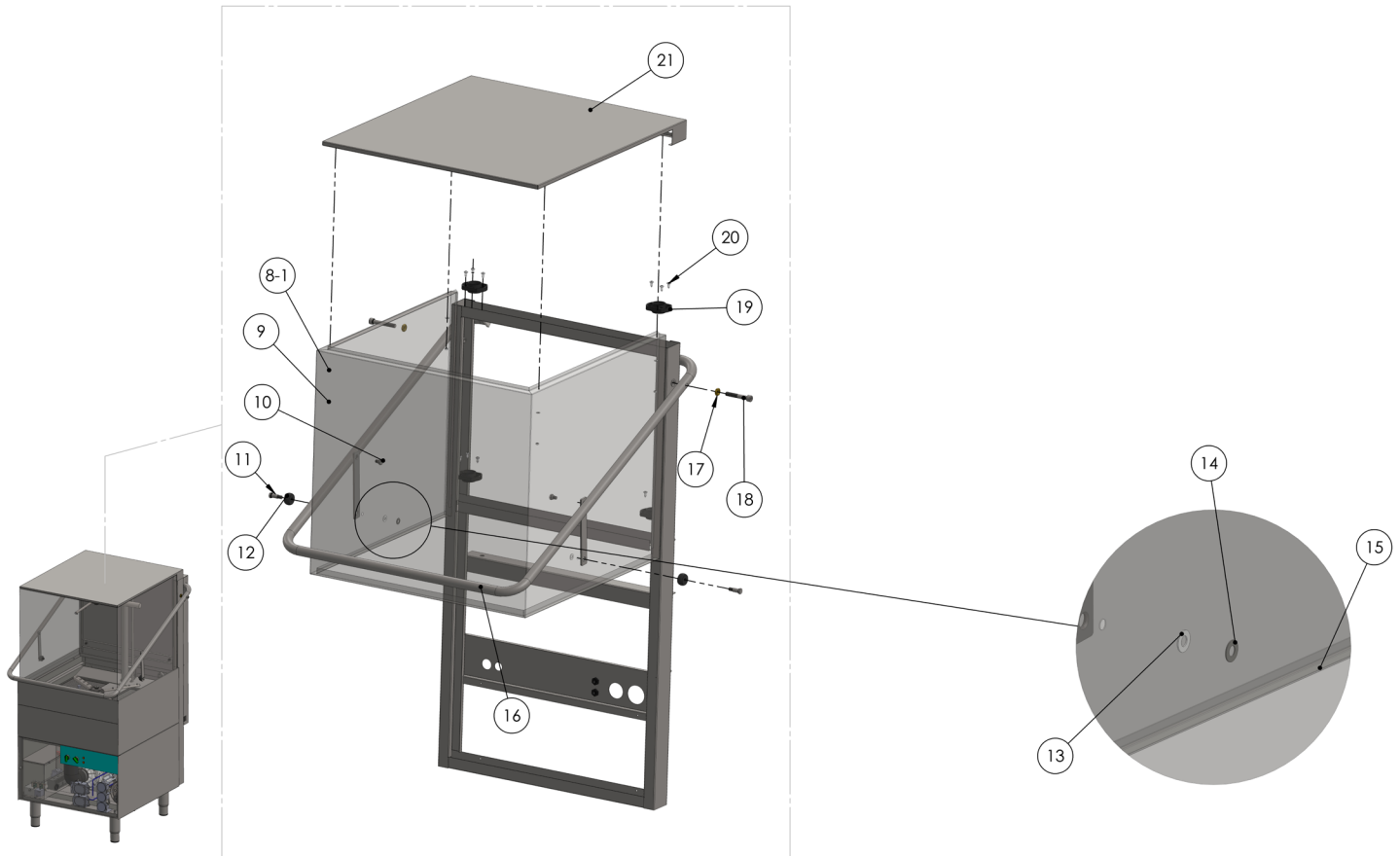
Parts Breakdown

Model CD-GR-1500 46321



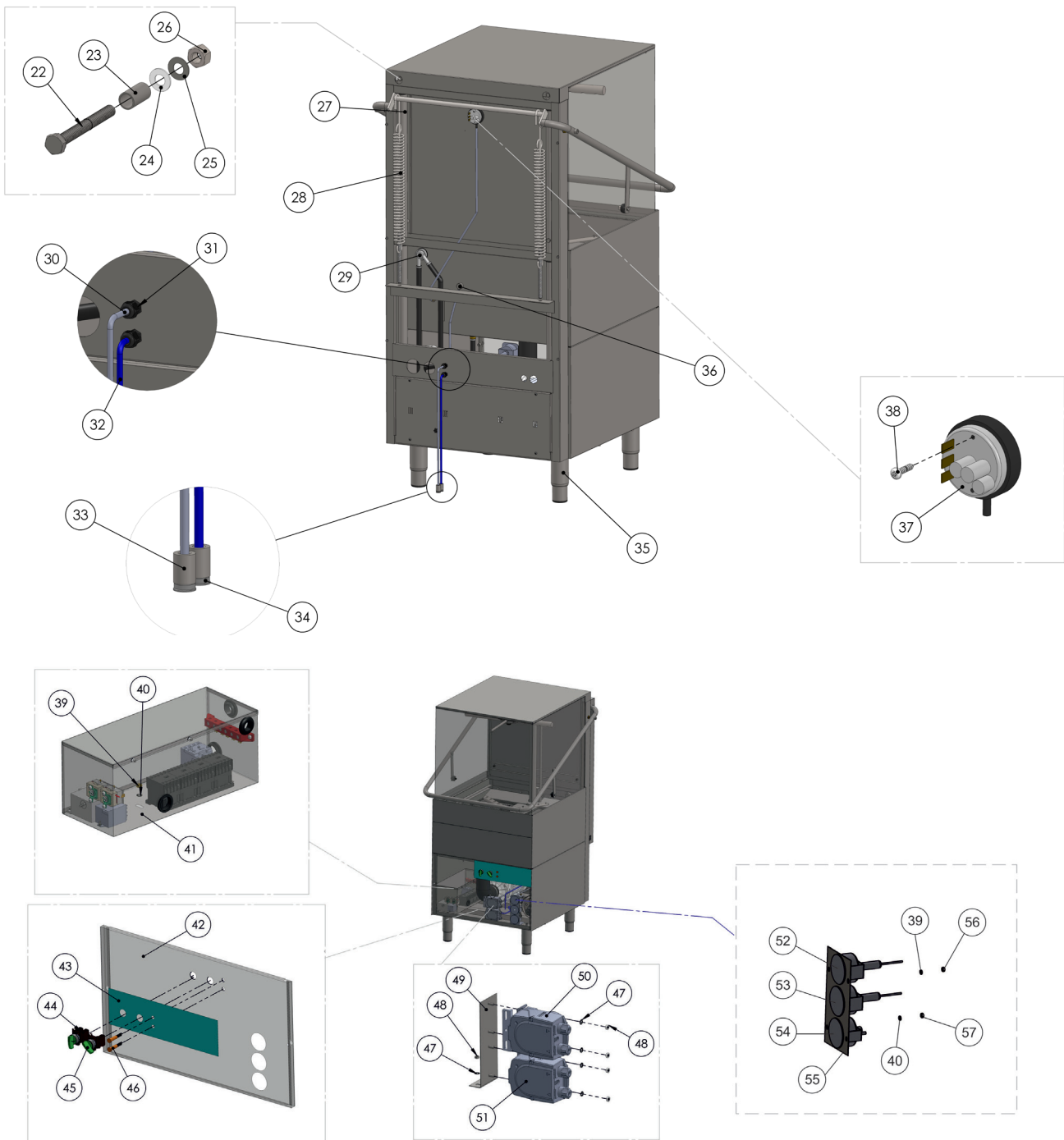
Parts Breakdown

Model CD-GR-1500 46321



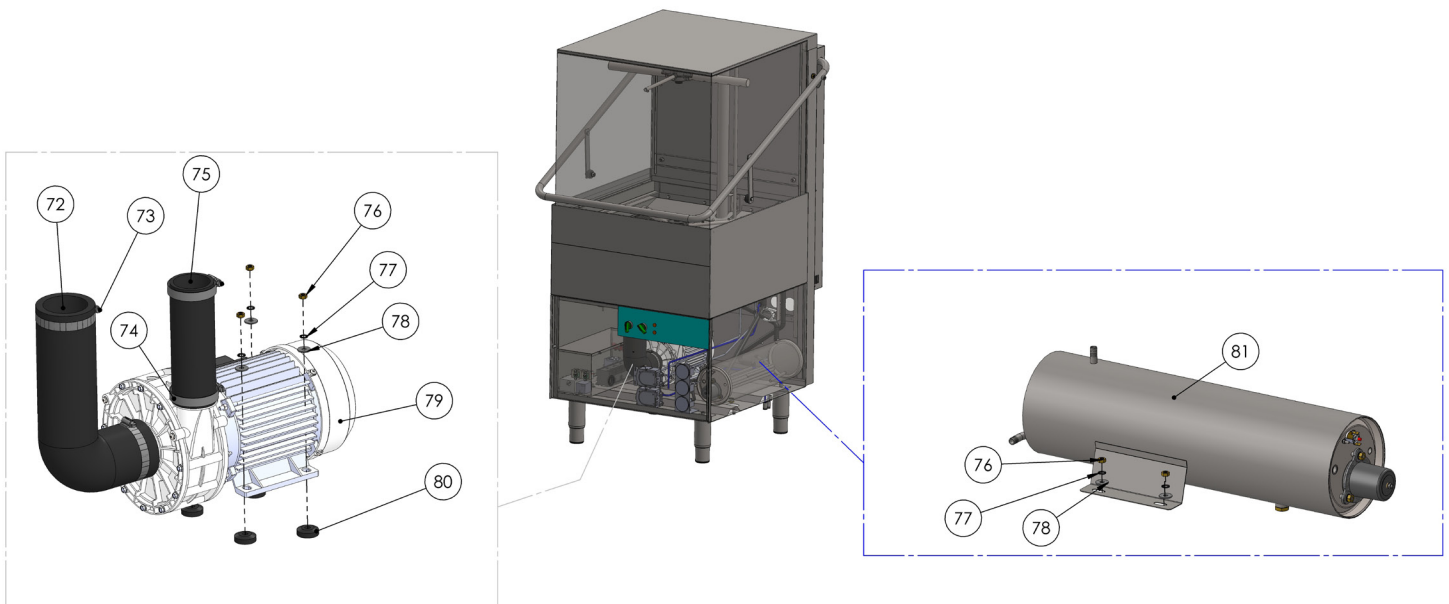
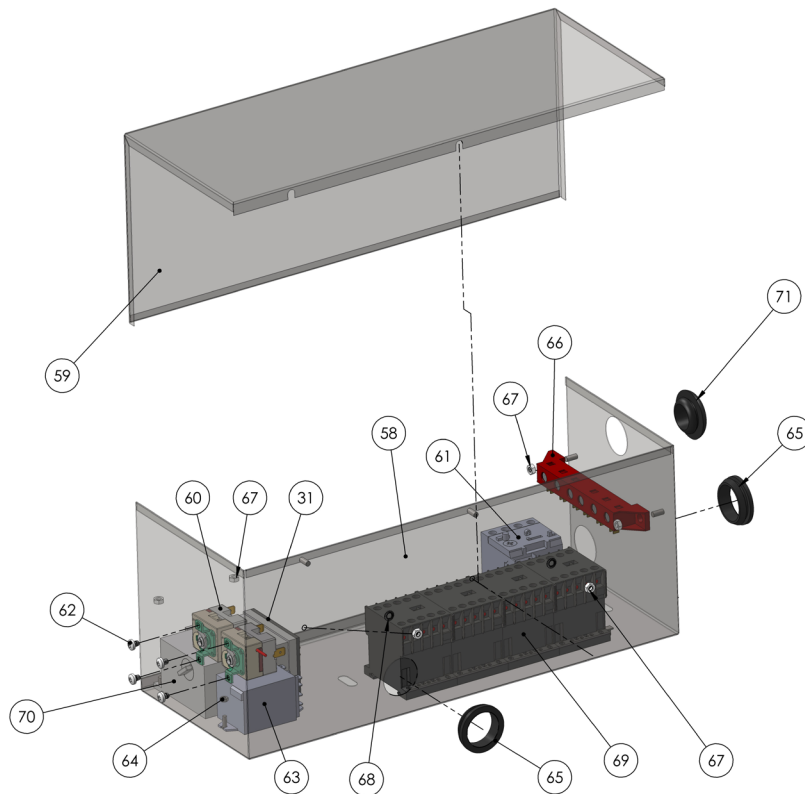
Parts Breakdown

Model CD-GR-1500 46321



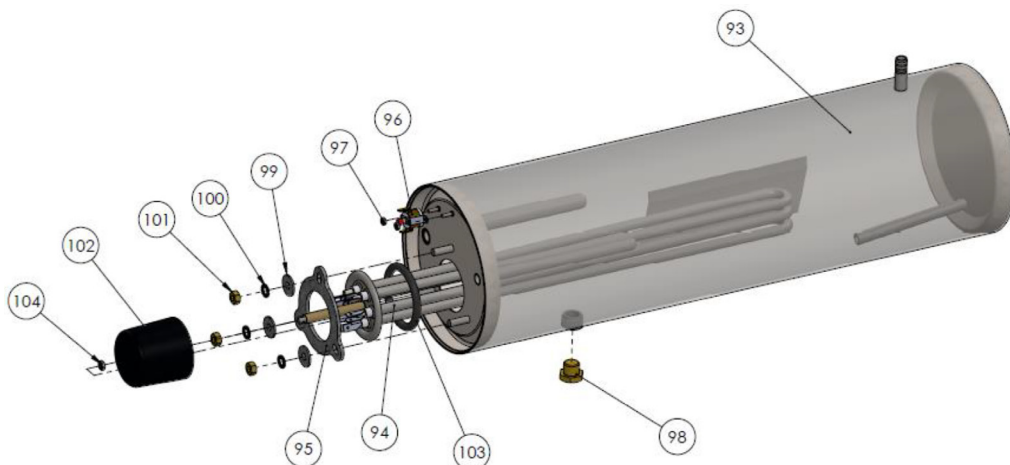
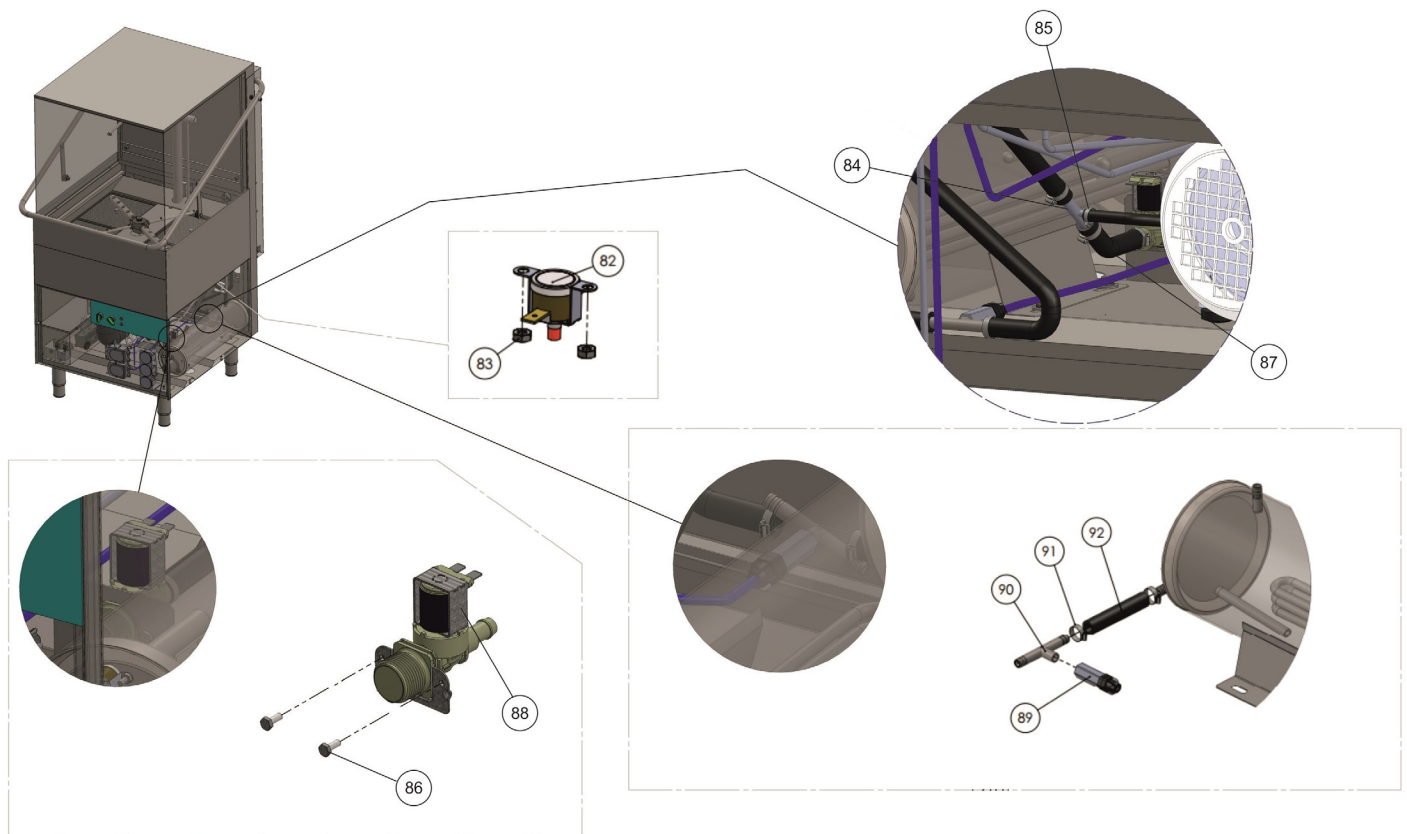
Parts Breakdown

Model CD-GR-1500 46321



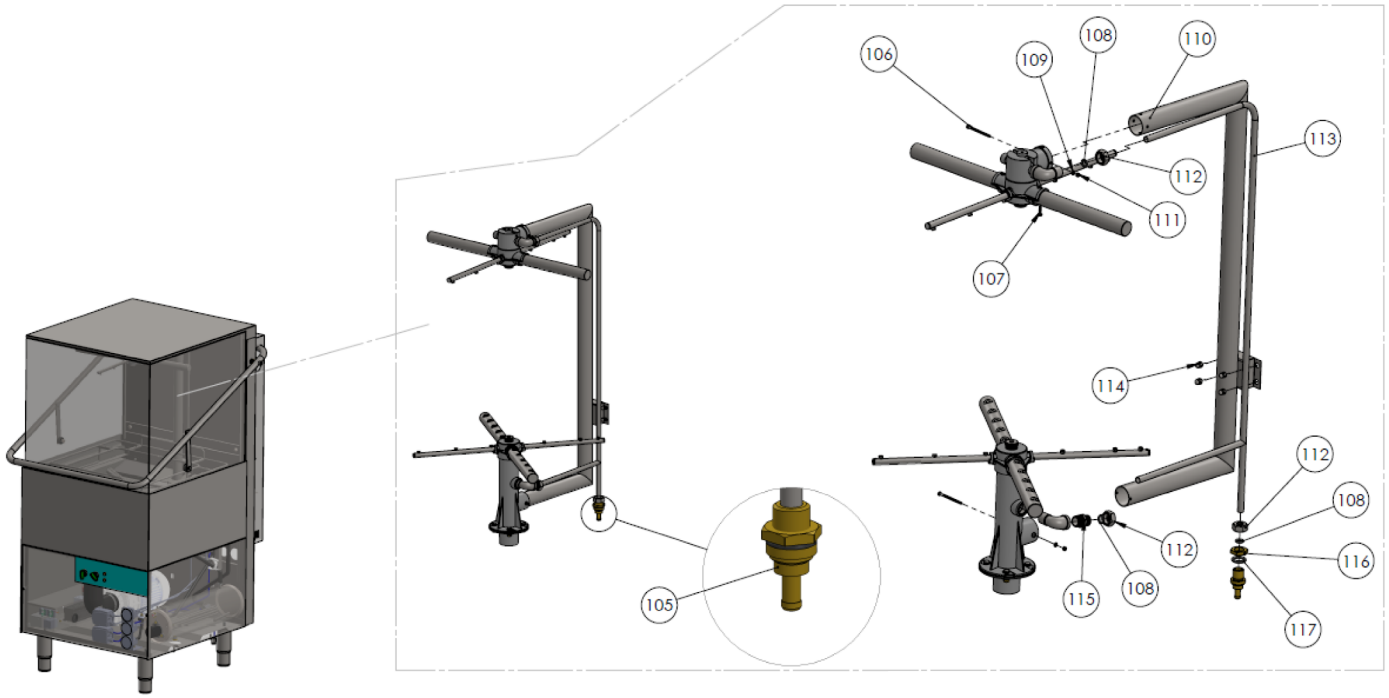
Parts Breakdown

Model CD-GR-1500 46321



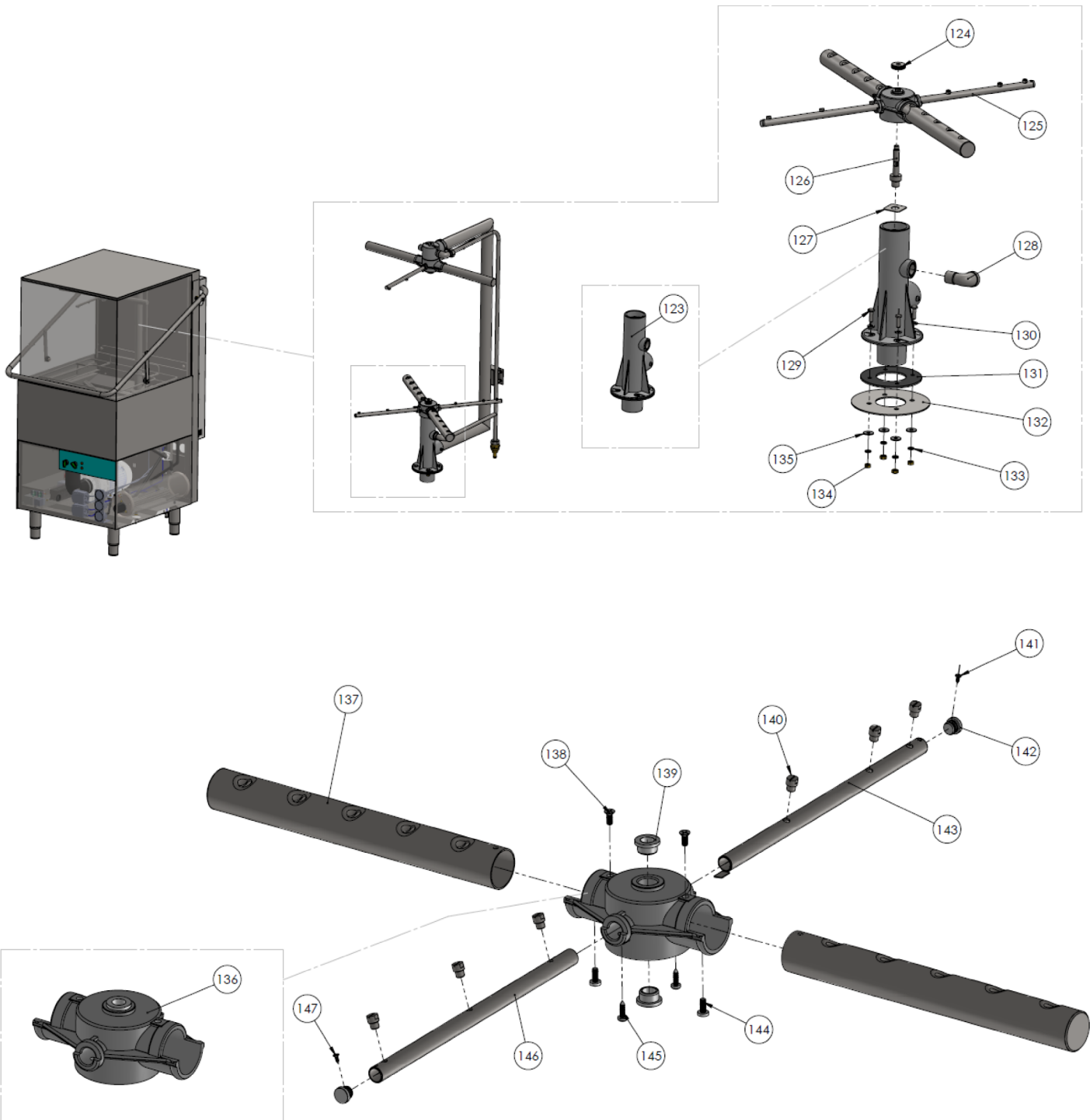
Parts Breakdown

Model CD-GR-1500 46321



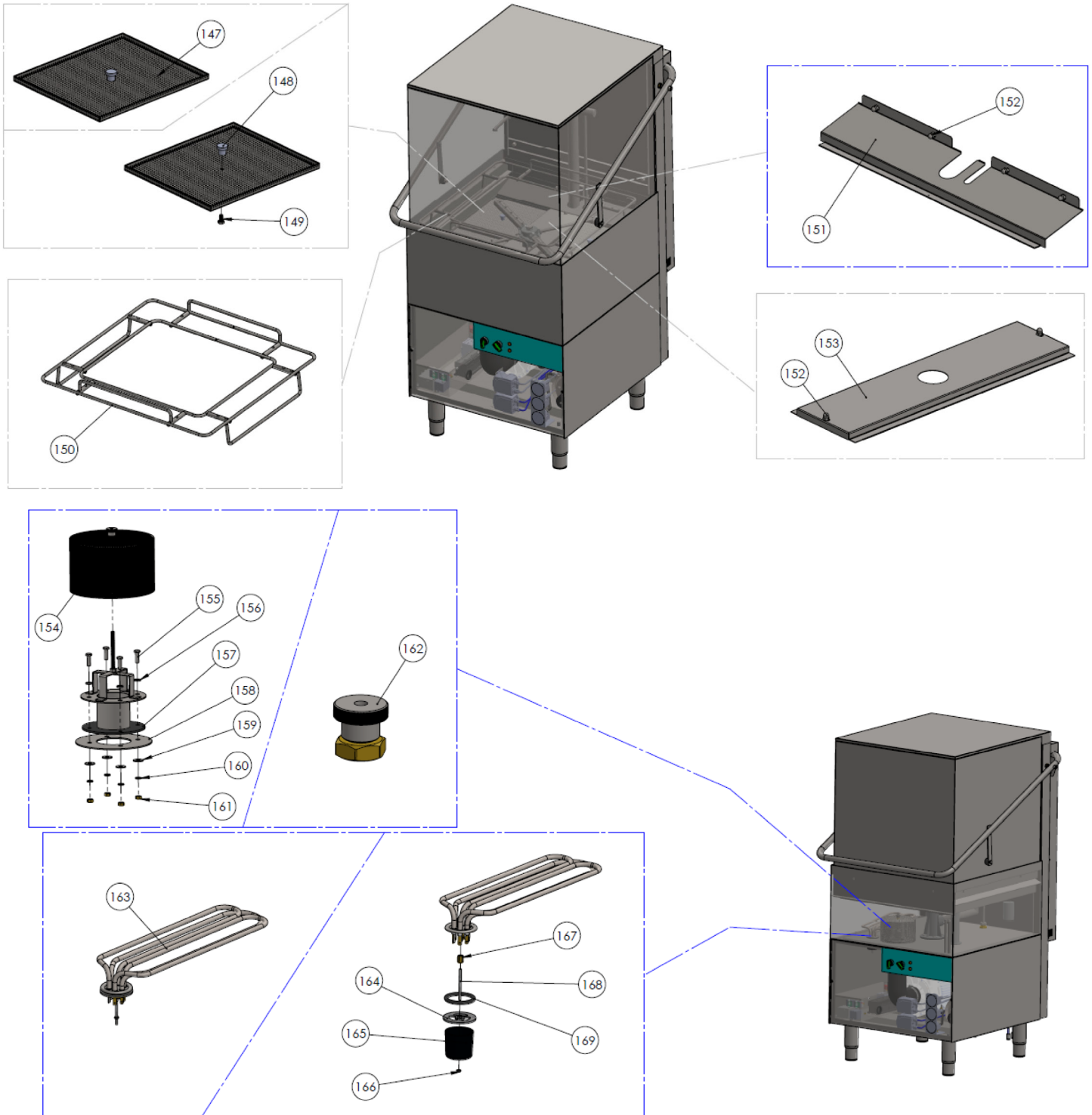
Parts Breakdown

Model CD-GR-1500 46321



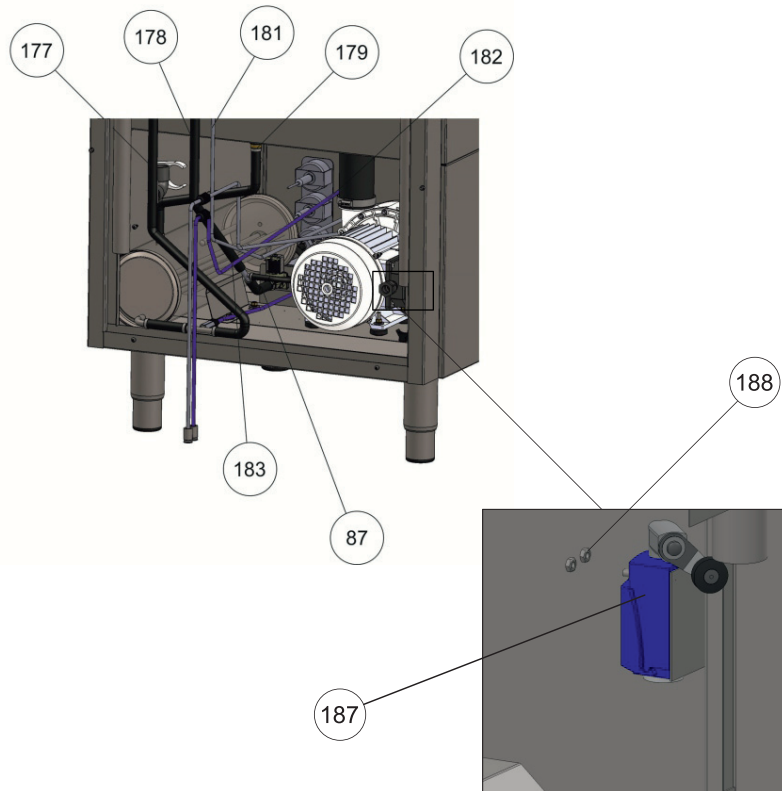
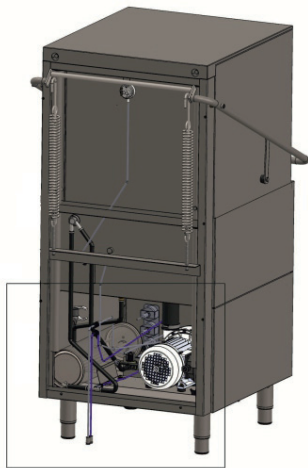
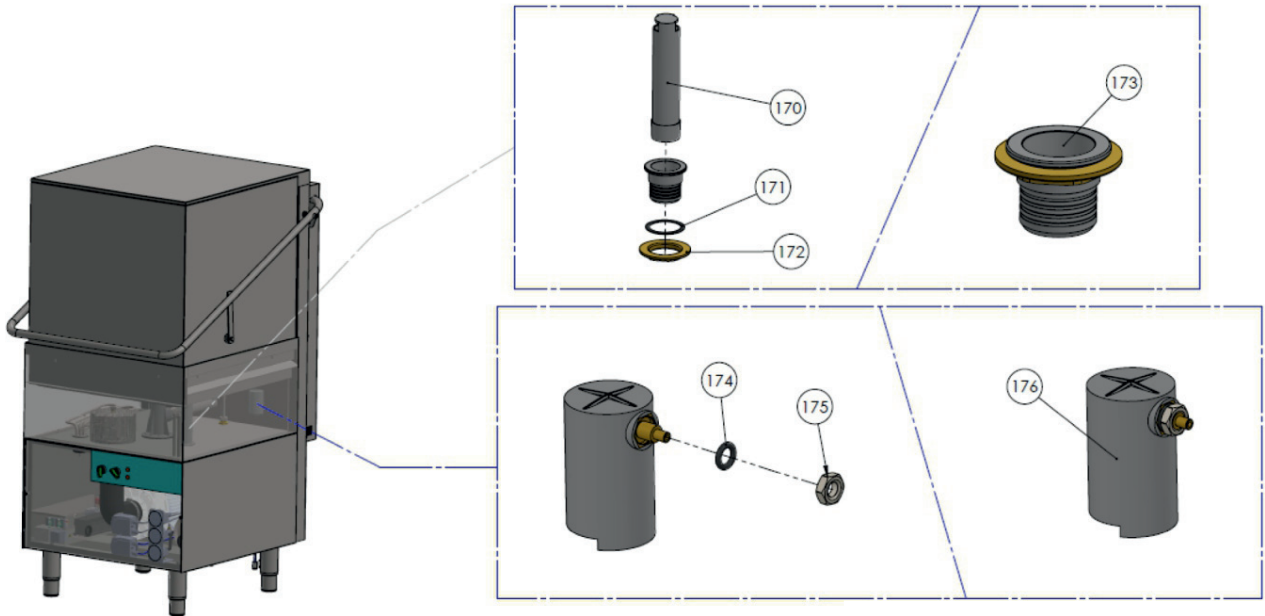
Parts Breakdown

Model CD-GR-1500 46321



Parts Breakdown

Model CD-GR-1500 46321



Parts Breakdown

Model CD-GR-1500 46321

| Item No. | Description | Position | Item No. | Description | Position | Item No. | Description | Position |
|----------|--|----------|----------|--|----------|----------|--|----------|
| 61020 | Front Cover Screw INOX M6x25 for C1500 | 1 | 60311 | Rinse Aid Inlet Tube 4x6mm (Blue) for C1500 | 32 | 73821 | INOX Nut M3 for C1500 | 64 |
| 61021 | Control Panel with Switches for C1500 | 2 | 61006 | Balance F15x20 for C1500 | 33 | 60973 | Pipe Rubber Protector for C1500 | 65 |
| 73831 | Lock Washer INOX 4 for C1500 | 3 | 61007 | Filter Plastic for Rinse Aid Valve for C1500 | 34 | 61031 | Power Supply Board 6 Con. for C1500 | 66 |
| 60952 | INOX Nut M4 for C1500 | 4 | 61024 | Leveling Feet 1 3/4in 304 145/210 M10x25 for C1500 | 35 | 73834 | M4 Nut Galvanised for C1500 | 67 |
| 73752 | Back Cover 1500 for C1500 | 5 | 73773 | Detergent Tank Injector for C1500 | 36 | 73831 | Lock Washer INOX 4 for C1500 | 68 |
| 73832 | Lower Back Cover 1500 for C1500 | 6 | 41090 | Pressostat Switch for C1500 | 37 | 41119 | Relay Magnetic Contactor for C1500 | 69 |
| 73829 | INOX Tapping Screw 4.2x13 for C1500 | 7 | 60959 | Tapping Screw 3.5x9.5 for C1500 | 38 | 61032 | Timer Electronic for C1500 | 70 |
| 73868 | Tapping Screw 4.2x19 for C1500 | 8 | 73831 | Lock washer INOX 4 for C1500 | 39 | 61033 | Pipe Rubber Protector for C1500 | 71 |
| 61022 | Teflon 10-4-1 for C1500 | 8-1 | 73831 | Lock washer INOX 4 for C1500 | 40 | 73854 | Pump Inlet Hose for C1500 | 72 |
| 60952 | INOX Nut M4 for C1500 | 9 | 61025 | Electrical Box Complete for C1500 | 41 | 73768 | Clamp 60-80 for C1500 | 73 |
| 73808 | INOX Axle Bolt Short M8x17 for C1500 | 10 | 61026 | Front Cover 1500 for C1500 | 42 | 73766 | Clamp 40-60 for C1500 | 74 |
| 73807 | INOX Axle Bolt M8x35 Long for C1500 | 11 | 61027 | Film for Omcan for C1500 | 43 | 73855 | Pump Output Hose for C1500 | 75 |
| 73772 | Copler 8x31 for C1500 | 12 | 41134 | On/Off Switch 0-1 Green LED for C1500 | 44 | 73843 | Nut M6 Galvanised for C1500 | 76 |
| 73872 | Teflon Washer 16x8x1mm for C1500 | 13 | 41104 | Cycle Selection Switch 0-1-2 LED for C1500 | 45 | 73800 | Galvanised Lock Washer 6.4x11x0.7 for C1500 | 77 |
| 73883 | Washer INOX 6x18 for C1500 | 14 | 41120 | Light Indicator Orange for C1500 | 46 | 73884 | Washer Steel 6x18 for C1500 | 78 |
| 73822 | INOX Nut M8 for C1500 | 15 | 61028 | Lock Washer 4 Dia. for C1500 | 47 | 73852 | Pump 1.5 HP 208-240V 6 2P UL for C1500 | 79 |
| 73776 | Door Handle 1500 for C1500 | 16 | 73834 | M4 Nut Galvanised for C1500 | 48 | 73772 | Copler 8x31 for C1500 | 80 |
| 73833 | M10 Nut INOX for C1500 | 17 | 73761 | Bracket for Two Peristaltic Pumps for C1500 | 49 | 61034 | Boiler 1500 400V Complete (1 Heating Elements) for C1500 | 81 |
| 73811 | INOX Bolt M10x64 Allen for C1500 | 18 | 60985 | Peristaltic Detergent Pump G300/230V for C1500 | 50 | 41087 | Tank Thermofuse 90°C for C1500 | 82 |
| 73847 | Plastic Guide D.30 for C1500 | 19 | 60984 | Peristaltic Rinse Aid Pump G302/230V for C1500 | 51 | 73821 | INOX Nut M3 for C1500 | 83 |
| 73869 | Tapping Screw 4.8x13 for C1500 | 20 | 60979 | Thermometer for Tank 2in 20/220F for C1500 | 52 | 65669 | T - Connection Boiler Φ 10 - Φ 6 for C1500 | 84 |
| 61023 | Upper Cover for C1500 | 21 | 60980 | Thermometer for Booster 2in 20/220F for C1500 | 53 | 61019 | Clamp 10-16 for C1500 | 85 |
| 73812 | INOX Bolt M8x70 for C1500 | 22 | 60981 | Pressure Gauge 2in 0/60 PSI 1/4 NPT for C1500 | 54 | 60969 | Galvanised Bolt M4x10 for C1500 | 86 |
| 73817 | INOX Hood Spacer 12x24 for C1500 | 23 | 60982 | Bracket for Pressure Gauge - Thermometer for C1500 | 55 | 65679 | Washing Machine Hose Black for C1500 | 87 |
| 73872 | Teflon Washer 16x8x1mm for C1500 | 24 | 73834 | M4 nut Galvanised for C1500 | 56 | 41112 | Water Input Solenoid Valve for C1500 | 88 |
| 73883 | Washer INOX 6x18 for C1500 | 25 | 73834 | M4 nut Galvanised for C1500 | 57 | 73840 | Non Return Valve for Rinse Aid Pump for C1500 | 89 |
| 73822 | INOX Nut M8 for C1500 | 26 | 61029 | Electrical Components Panel for C1500 | 58 | 73870 | Tee-Connection Boiler with 1/8 for C1500 | 90 |
| 73805 | Hood Support Pipe 30x1100 for C1500 | 27 | 61030 | Electrical Components Panel for C1500 | 59 | 61019 | Clamp 10-16 for C1500 | 91 |
| 41122 | Door Spring Turbo for C1500 | 28 | 41118 | Thermostat 0-90°C 1500mm for C1500 | 60 | 61035 | Washing Machine Hose Black 10x16.5 for C1500 | 92 |
| 73839 | Non Return Valve (DVGW) for C1500 | 29 | 73876 | Thermal Overload Relay 7.0-10.0 for C1500 | 61 | 61036 | Boiler Turbo for C1500 | 93 |
| 60310 | Detergent Inlet Tube 4x6mm (Transparent) for C1500 | 30 | 73801 | Galvanised Machine Screw M4x5 for C1500 | 62 | 61037 | Heater Element Boiler 1500, 7.5kW for C1500 | 94 |
| 65668 | Cable gland PG-07 Black for C1500 | 31 | 73838 | Micro Relay 8 Pins Faston for C1500 | 63 | 73758 | Boiler Element Fitting Base for C1500 | 95 |

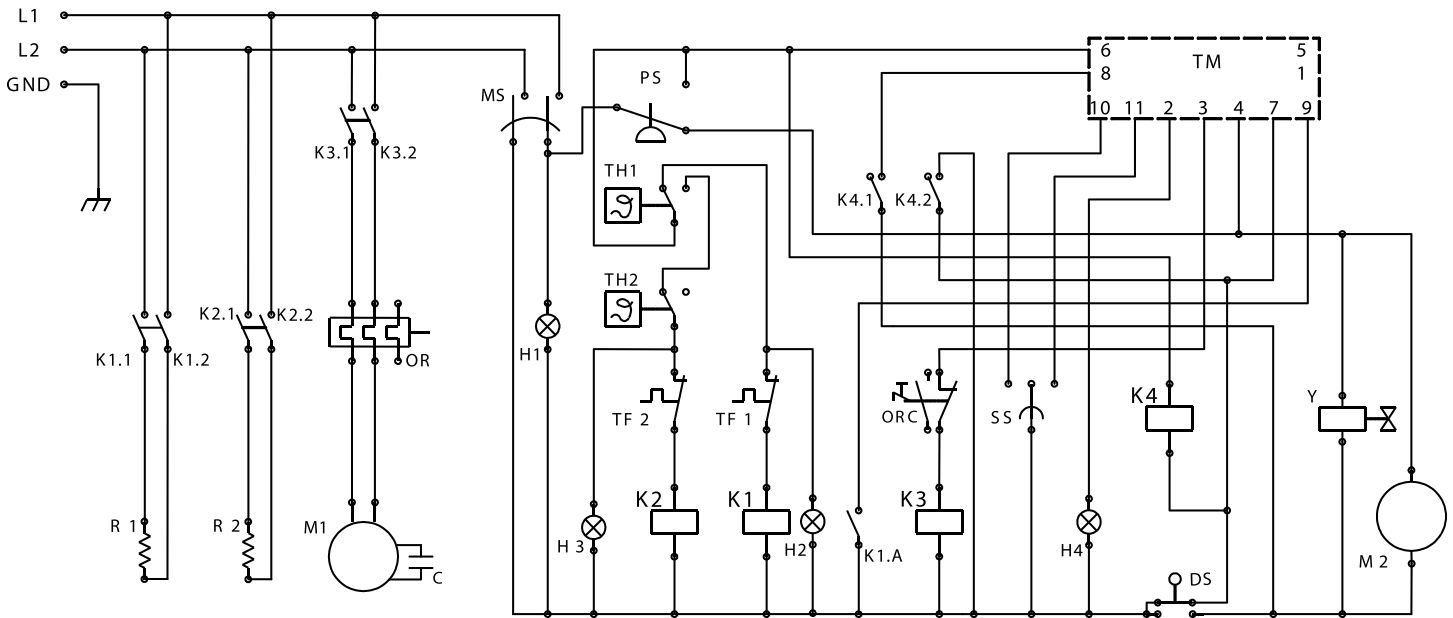
Parts Breakdown

Model CD-GR-1500 46321

| Item No. | Description | Position | Item No. | Description | Position | Item No. | Description | Position |
|----------|---|----------|----------|---|----------|----------|--|----------|
| 41088 | Boiler Thermofuse 105°C for C1500 | 96 | 73795 | Flow Control Disc for Base for C1500 | 127 | 61049 | Retaining Plate for Filter for C1500 | 158 |
| 73821 | INOX Nut M3 for C1500 | 97 | 41136 | INOX Angle Male/Female 1/2" for C1500 | 128 | 73884 | Washer Steel 6x18 for C1500 | 159 |
| 73757 | Boiler Drain Threaded Cap for C1500 | 98 | 73816 | INOX Hex Bolt M6x20 for C1500 | 129 | 73800 | Galvanised Lock Washer 6.4x11x0.7 for C1500 | 160 |
| 73884 | Washer Steel 6x18 for C1500 | 99 | 73871 | Teflon 12-6-2 for C1500 | 130 | 73843 | Nut M6 Galvanised for C1500 | 161 |
| 73800 | Galvanised Lock Washer 6.4x11x0.7 for C1500 | 100 | 73861 | Rubber Gasket 109x54x3 for C1500 | 131 | 73794 | Filter Retaining Nut for C1500 | 162 |
| 73843 | Nut M6 Galvanised for C1500 | 101 | 61040 | Retaining Plate Turbo for C1500 | 132 | 41128 | Tank Heating Element 6Kw for C1500 | 163 |
| 73802 | Heater Element Cover for C1500 | 102 | 73800 | Galvanised Lock Washer 6.4x11x0.7 for C1500 | 133 | 73867 | Tank Heating Element Retaining Bracket for C1500 | 164 |
| 60978 | O-Ring 45x6 for C1500 | 103 | 73843 | Nut M6 Galvanised for C1500 | 134 | 73802 | Heater Element Cover for C1500 | 165 |
| 73834 | M4 Nut Galvanised for C1500 | 104 | 73884 | Washer Steel 6x18 for C1500 | 135 | 73834 | M4 Nut Galvanised for C1500 | 166 |
| 73856 | Rinse Base TUR - KN for C1500 | 105 | 41123 | Rinsing and Washing Arms Cross Plastic for C1500 | 136 | 73803 | Heating Element Nut 13mm M4-M6 for C1500 | 167 |
| 73815 | INOX Hex Bolt M4x60 for C1500 | 106 | 73845 | Pipes Turbo 1500 INOX 30x1x248 for C1500 | 137 | 73878 | Threaded Shaft M4x60 for C1500 | 168 |
| 73868 | Tapping Screw 4.2x19 for C1500 | 107 | 73826 | INOX Screw 4.2x13 for C1500 | 138 | 61050 | O-Ring 45x6 for C1500 | 169 |
| 41140 | O-Ring 10.5x3 for C1500 | 108 | 41127 | Teflon 18x10 for C1500 | 139 | 41131 | Drain and Overflow Pipe for C1500 | 170 |
| 73831 | Lock Washer INOX 4 for C1500 | 109 | 41085 | Sprayer for Rinsing Arm for C1500 | 140 | 61000 | Rubber Gasket 35x55x1 for C1500 | 171 |
| 73882 | Wash Supply INOX Turbo for C1500 | 110 | 73825 | INOX Screw 2.9x10 for C1500 | 141 | 73780 | Drain and Overflow Base Nut 1 1/2 for C1500 | 172 |
| 60952 | INOX Nut M4 for C1500 | 111 | 61041 | Plastic Cap for Rinse Arm for C1500 | 142 | 41132 | Drain and Overflow Base for C1500 | 173 |
| 41139 | Rinse Pipe Retaining Nut for C1500 | 112 | 61042 | Rinse Arm Turbo for C1500 | 143 | 41140 | O-Ring 10.5x3 for C1500 | 174 |
| 73858 | Rinse Supply Inox Turbo for C1500 | 113 | 73868 | Tapping Screw 4.2x19 for C1500 | 144 | 73833 | M10 Nut INOX for C1500 | 175 |
| 73774 | Domed Cap Nut M6 for C1500 | 114 | 73819 | INOX Machine Screw 3.5x13 for C1500 | 145 | 41091 | Pressostat Chamber for C1500 | 176 |
| 41137 | INOX Niple 1/2" for C1500 | 115 | 61043 | Rinse Arm Turbo for C1500 | 146 | 61051 | Washing Machine Hose Black 10x16.5 for C1500 | 177 |
| 73841 | Nut 1/2 for C1500 | 116 | 73793 | Filter Element for C1500 | 147 | 61052 | Washing Machine Hose Black 10x16.5 for C1500 | 178 |
| 73749 | O-Ring 20x4 for C1500 | 117 | 61044 | INOX Knob for Square Tank Filter 1500-600 for C1500 | 148 | 61053 | Washing Machine Hose Black 10x16.5 for C1500 | 179 |
| 41125 | Wash and Rinse Base Upper Plastic for C1500 | 118 | 61045 | INOX Hex Screw M6x12 for C1500 | 149 | 61054 | Tubo Cristallo 4x6 for C1500 | 180 |
| 41136 | INOX Angle Male/Female 1/2" for C1500 | 119 | 61046 | Basket Support for C1500 | 150 | 61055 | Tubo Cristallo 4x6 for C1500 | 181 |
| 73806 | INOX Axle 20/8 Turbo 1500 Evo for C1500 | 120 | 73863 | Support for Filter Back for C1500 | 151 | 61056 | Tubo PVC Blue 4x6 for C1500 | 182 |
| 61038 | Wash and Rinse Cross Turbo Complete for C1500 | 121 | 61047 | Domed Cap Nut M6 for C1500 | 152 | 61057 | Washing Machine Hose Black 6x12 for C1500 | 183 |
| 41124 | Wash and Rinse Group Retaining Nut 25-7-8 for C1500 | 122 | 73864 | Support for Filter Mid for C1500 | 153 | 64817 | Inlet Hose 1500mm (diam. 10x14.5 Hot Water straight/elbow with gasket) for C1500 | 184 |
| 41126 | Wash and Rinse Base Lower Plastic for C1500 | 123 | 73853 | Pump Filter Turbo for C1500 | 154 | 60305 | Draining Pipe OD40-ID31.5-2.5m for C1500 | 185 |
| 41124 | Wash and Rinse Group Retaining Nut 25-7-8 for C1500 | 124 | 73816 | INOX Hex Bolt M6x20 for C1500 | 155 | 65670 | PRV Valve for C1500 | 186 |
| 61038 | Wash and Rinse Cross Turbo Complete for C1500 | 125 | 73871 | Teflon 12-6-2 for C1500 | 156 | 73875 | Door Switch for C1500 | 187 |
| 73806 | INOX Axle 20/8 Turbo 1500 Evo for C1500 | 126 | 61048 | Tank Filter Base Rubber Gasket Turbo for C1500 | 157 | 73834 | M4 Nut Galvanized for C1500 | 188 |

Electrical Schematics

Model CD-GR-1500 46321



| | | | | | | | |
|----|-------------------------|----|----------------------|------|---------------------------|-----|-----------------------------------|
| MS | Main Switch | TM | Electronic Timer | K3 | Magnetic Contactor | OR | Overload Relay |
| SS | Program Selector Switch | M1 | Wash Pump Motor | R1 | Booster's Heating Element | C | Capacitor |
| DS | Door Switch | M2 | Detergent Pump Motor | R2 | Tank's Heating Element | ORC | Overload's Relay Breaking Contact |
| PS | Pressure Switch | K4 | Microrelay | H | Indicator Lamp | | |
| TF | Thermofuse | K1 | Magnetic Contactor | Y | Water Inlet Valve | | |
| TH | Thermostat | K2 | Magnetic Contactor | K1.A | Aux Contact | | |

INSTALLATION REQUIREMENTS AND CHECKLIST

**The Dishwasher must be installed by a certified plumber.
Failing to follow the instructions below will void the warranty.**



This checklist *must* be returned with warranty card.

Installer
Signature Below:

- 1. Check water hardness. If water hardness exceeds 7 grains per gallon, a water softener must be installed.
- 2. Ensure the correct placement and leveling of the machine as per the manual (page 10).
- 3. The water supply hose / pipe should be flushed before the final connection (page 12).
- 4. The dishwasher must be connected to a hot water source with a minimum temperature of 40° Celcius / 104° Fahrenheit.
- 5. Adjust water pressure using the PRV to 20 PSI, while filling the machine with water.
- 6. Rinse and detergent containers can be adjusted at the bottom of the machine by rotating the adjustment screws on the pumps. Adjust rinse/detergent flow to manufacturers recommendations. 2.6 ml per rotation for DETERGENT – 1.2 ml per rotation for RINSE. ****Rinse/Detergent containers must be equal or lower in height than the pumps****
- 7. Do not add an extension to the drain hose, drain connections must be made in the same flow with the drain pipe. Do not install drain hose to exceed 26 inches / 65 cm above the ground (page 13).
- 8. If the tank temperature gauge is not inside the green zone, the installer must adjust to 80° Celsius / 176° Fahrenheit.
- 9. If the booster gauge is not inside the green zone, the installer must adjust to 80° Celsius / 176° Fahrenheit.
- 10. If no water filtration/softener system is used, descale every 4 weeks.

Please read through owner's manual completely for all instructions.

Company Name: _____
Company Phone Number: _____
Installed By: _____
Date Installed: _____
Signature of Installer: _____



Warranty Registration

Thank you for purchasing an Omcan product. To register your warranty for this product, complete the information below, tear off the card at the perforation and then send to the address specified below. You can also register online by visiting:

Merci d'avoir acheté un produit Omcan. Pour enregistrer votre garantie pour ce produit, complétez les informations ci-dessous, détachez la carte au niveau de la perforation, puis l'envoyer à l'adresse spécifiée ci-dessous. Vous pouvez également vous inscrire en ligne en visitant:

Gracias por comprar un producto Omcan usted. Para registrar su garantía para este producto, complete la información a continuación, cortar la tarjeta en la perforación y luego enviarlo a la dirección indicada a continuación. También puede registrarse en línea en:

<https://omcan.com/warranty-registration/>

For mailing in Canada

Pour postale au Canada

Por correo en Canadá

OMCAN

PRODUCT WARRANTY REGISTRATION

3115 Pepper Mill Court,

Mississauga, Ontario

Canada, L5L 4X5

For mailing in the US

Pour diffusion aux États-Unis

Por correo en los EE.UU.

OMCAN

PRODUCT WARRANTY REGISTRATION

4450 Witmer Industrial Estates, Unit 4,

Niagara Falls, New York

USA, 14305

or email to: service@omcan.com



Purchaser's Information

Name: _____

Address: _____

City: _____ Province or State: _____ Postal or Zip: _____

Country: _____

Dealer from which Purchased: _____

Dealer City: _____ Dealer Province or State: _____

Invoice: _____

Model Name: _____ Model Number: _____

Machine Description: _____

Date of Purchase (MM/DD/YYYY): _____

Would you like to extend the warranty? Yes No

Company Name: _____

Telephone: _____

Email Address: _____

Type of Company:

Restaurant Bakery Deli

Butcher Supermarket Caterer

Institution (specify): _____

Other (specify): _____

Serial Number: _____

Date of Installation (MM/DD/YYYY): _____

Thank you for choosing Omcan | Merci d'avoir choisi Omcan | Gracias por elegir Omcan



Since 1951 Omcan has grown to become a leading distributor of equipment and supplies to the North American food service industry. Our success over these many years can be attributed to our commitment to strengthen and develop new and existing relationships with our valued customers and manufacturers. Today with partners in North America, Europe, Asia and South America, we continually work to improve and grow the company. We strive to offer customers exceptional value through our qualified local sales and service representatives who provide convenient access to over 5,000 globally sourced products.

Depuis 1951 Omcan a grandi pour devenir un des “leaders” de la distribution des équipements et matériel pour l’industrie des services alimentaires en Amérique du Nord. Notre succès au cours de ces nombreuses années peut être attribué à notre engagement à renforcer et à développer de nouvelles et existantes relations avec nos clients et les fabricants de valeur. Aujourd’hui avec des partenaires en Amérique du Nord, Europe, Asie et Amérique du Sud, nous travaillons continuellement à améliorer et développer l’entreprise. Nous nous efforçons d’offrir à nos clients une valeur exceptionnelle grâce à nos ventes locales qualifiées et des représentants de service qui offrent un accès facile à plus de 5000 produits provenant du monde entier.

Desde 1951 Omcan ha crecido hasta convertirse en un líder en la distribución de equipos y suministros de alimentos en América del Norte industria de servicios. Nuestro éxito en estos años se puede atribuir a nuestro compromiso de fortalecer y desarrollar nuevas relaciones existentes con nuestros valiosos clientes y fabricantes. Hoy con socios de América del Norte, Europa, Asia y América del Sur, que trabajan continuamente para mejorar y crecer la empresa. Nos esforzamos por ofrecer a nuestros clientes valor excepcional a través de nuestro local de ventas y representantes de los servicios que proporcionan un fácil acceso a más de 5,000 productos con origen a nivel mundial.

