



Meat Slicers

Models MS-IT-0300-CE, 0330-CE, 0350
Items 46162, 46163, 39583
Instruction Manual



Revised - 05/21/2021

Toll Free: 1-800-465-0234
Fax: 905-607-0234
Email: service@omcan.com
www.omcan.com

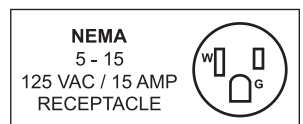


Table of Contents

Model MS-IT-0300-CE / Model MS-IT-0330-CE / Model MS-IT-0350

| Section | Page |
|--------------------------------|-------------|
| General Information ----- | 3 - 4 |
| Safety and Warranty ----- | 4 - 8 |
| Technical Specifications ----- | 9 |
| Installation ----- | 9 - 10 |
| Operation ----- | 11 - 12 |
| Maintenance ----- | 12 - 20 |
| Troubleshooting ----- | 20 - 21 |
| Parts Breakdown ----- | 22 - 38 |
| Electrical Schematics ----- | 39 |
| Notes ----- | 40 - 42 |
| Warranty Registration ----- | 43 |



General Information

Omcan Manufacturing and Distributing Company Inc., Food Machinery of America, Inc. dba Omcan and Omcan Inc. are not responsible for any harm or injury caused due to any person's improper or negligent use of this equipment. The product shall only be operated by someone over the age of 18, of sound mind, and not under the influence of any drugs or alcohol, who has been trained in the correct operation of this machine, and is wearing authorized, proper safety clothing. Any modification to the machine voids any warranty, and may cause harm to individuals using the machine or in the vicinity of the machine while in operation.

CHECK PACKAGE UPON ARRIVAL

Upon receipt of an Omcan shipment please inspect for external damage. If no damage is evident on the external packaging, open carton to ensure all ordered items are within the box, and there is no concealed damage to the machine. If the package has suffered rough handling, bumps or damage (visible or concealed), please note it on the bill of lading before accepting the delivery and contact Omcan within 24 hours, so we may initiate a claim with the carrier. A detailed report on the extent of the damage caused to the machine must be filled out within three days, from the delivery date shown in the shipping documents. Omcan has no recourse for damaged products that were shipped collect or third party.

Before operating any equipment, always read and familiarize yourself with all operation and safety instructions.

Omcan would like to thank you for purchasing this machine. It's of the utmost importance to save these instructions for future reference. Also save the original box and packaging for shipping the equipment if servicing or returning of the machine is required.

Omcan Fabrication et distribution Compañie Limité et Food Machinery d'Amérique, dba Omcan et Omcan Inc. ne sont pas responsables de tout dommage ou blessure causé du fait que toute personne ait utilisé cet équipement de façon irrégulière. Le produit ne doit être exploité que par quelqu'un de plus de 18 ans, saine d'esprit, et pas sous l'influence d'une drogue ou d'alcool, qui a été formé pour utiliser cette machine correctement, et est vêtu de vêtements de sécurité approprié. Toute modification de la machine annule toute garantie, et peut causer un préjudice à des personnes utilisant la machine ou des personnes à proximité de la machine pendant son fonctionnement.

VÉRIFIEZ LE COLIS DÈS RÉCEPTION

Dès réception d'une expédition d'Omcan veuillez inspecter pour dommages externes. Si aucun dommage n'est visible sur l'emballage externe, ouvrez le carton afin de s'assurer que tous les éléments commandés sont dans la boîte, et il n'y a aucun dommage dissimulé à la machine. Si le colis n'a subi aucune mauvaises manipulations, de bosses ou de dommages (visible ou cachée), notez-le sur le bond de livraison avant d'accepter la livraison et contactez Omcan dans les 24 heures qui suivent, pour que nous puissions engager une réclamation auprès du transporteur. Un rapport détaillé sur l'étendue des dommages causés à la machine doit être rempli dans un délai de trois jours, à compter de la date de livraison indiquée dans les documents d'expédition. Omcan n'a aucun droit de recours pour les produits endommagés qui ont été expédiés ou cueilli par un tiers transporteur.

General Information

Avant d'utiliser n'importe quel équipement, toujours lire et vous familiariser avec toutes les opérations et les consignes de sécurité.

Omcan voudrais vous remercier d'avoir choisi cette machine. Il est primordial de conserver ces instructions pour une référence ultérieure. Également conservez la boîte originale et l'emballage pour l'expédition de l'équipement si l'entretien ou le retour de la machine est nécessaire.

Omcan Empresa De Fabricacion Y Distribucion Inc. Y Maquinaria De Alimentos De America, Inc. dba Omcan y Omcan Inc. no son responsables de ningun daño o perjuicio causado por cualquier persona inadecuada o el uso descuidado de este equipo. El producto solo podra ser operado por una persona mayor de 18 años, en su sano juicio y no bajo alguna influencia de droga o alcohol, y que este ha sido entrenado en el correcto funcionamiento de esta máquina, y ésta usando ropa apropiada y autorizada. Cualquier modificación a la máquina anula la garantía y puede causar daños a las personas usando la máquina mientras esta en el funcionamiento.

REVISE EL PAQUETE A SU LLEGADA

Tras la recepcion de un envio Omcan favor inspeccionar daños externos. Si no hay daños evidentes en el empaque exterior, Habra el carton para asegurarse que todos los articulos solicitados estén dentro de la caja y no encuentre daños ocultos en la máquina. Si el paquete ha sufrido un manejo de poco cuidado, golpes o daños (visible o oculto) por favor anote en la factura antes de aceptar la entrega y contacte Omcan dentro de las 24 horas, de modo que podamos iniciar una reclamación con la compañía. Un informe detallado sobre los daños causados a la máquina debe ser llenado en el plazo de tres días, desde la fecha de entrega que se muestra en los documentos de envío. Omcan no tiene ningun recurso por productos dañados que se enviaron a recoger por terceros.

Antes de utilizar cualquier equipo, siempre lea y familiarizarse con todas las instrucciones de funcionamiento y seguridad.

Omcan le gustaría darle las gracias por la compra de esta máquina. Es de la mayor importancia para salvar estas instrucciones para futuras consultas. Además, guarda la caja original y el embalaje para el envío del equipo si servicio técnico o devolución de la máquina que se requiere.

Safety and Warranty

GENERAL WARNINGS

Meaning of warning signs found in booklet.

DANGER: Indicates an imminently hazardous situation which, if not avoided, could result in serious injury or even death. The use of this term is limited to the most extreme situations.

Safety and Warranty

ATTENTION: Indicates a potentially hazardous situation which, if not avoided, could result in serious injury (and in extreme cases death).

WARNING: Indicates a potentially hazardous situation which, if not avoided, may result in minor injuries to personnel or damage to equipment. It also alerts the user on incorrect operating modes.

SAFETY WARNINGS INDISPENSABLE BEFORE USE

Carefully read the warnings contained herein as they provide important information regarding safe installation, use and maintenance of the Gravity slicing machines for food use.

The purpose of this publication, simply defined 'manual' below, is to allow the user, especially to the direct operator to take every measure and to prepare all the necessary human and material resources for a safe and durable use of the. This booklet **MUST** be kept for all the slicer lifetime and in case of need (example: damage tampering even partially its consultation, etc.) the user must ask for a new copy to the manufacturer.

In case of sale of the slicer, deliver to the new owner this manual too.

- The installation must be performed following the instructions of the manufacturer. A wrong installation can cause damages to people, animals or things, in respect of which the manufacturer cannot be considered responsible.
- Children should not use the device as a toy and should neither clean nor use the equipment.
- Keep away the children from the device and the power cord.
- The appliance must be used by adults adequately trained for the purpose who have carefully read the content of this manual.
- The elements of the packing (plasti bags, expanded polystyrene, etc.) must be kept out of reach of children as they are potential sources of danger.
- The electrical safety of this device is ensured only when it's correctly connected to an efficient grounding installation in accordance with the electrical safety standards in force.
- It's necessary to verify this fundamental safety requirement and, in case of doubt, ask for an accurate installation safety control by professionally qualified personnel.
- The manufacturer cannot be considered responsible for any damage caused by lack of installation's grounding.
- Before plugging the appliance make sure that the data on the label correspond to those of the electrical distribution network.
- The plate is on the bottom of the appliance.
- For your safety, it is recommended to power the device through a circuit breaker (DRC) with trip current not exceeding 30 mA.
- In case of incompatibility between the socket and the plug of the appliance have the die-cast wire and plug with another one suitable by an authorized retailer. In case of tampering the manufacturer doesn't answer neither for safety, nor for warranty. Alternatively have the socket replaced with a suitable type by a qualified professional. The latter, in particular, will also have to ensure that the section of the socket cables is suitable for the power absorbed by the appliance. In general it is not advisable to use adapters, multiple sockets and/or extensions.
- Do not connect the appliance to the electrical power through external timers or remote operating systems.

Safety and Warranty

- The use of any electrical appliance requires the observance of some basic rules. in particular:
 - Do not touch the appliance with wet hands.
 - Do not use the appliance barefoot.
 - Do not pull the power cord or the appliance itself to remove the plug from the socket.
 - Do not leave the appliance exposed to atmospheric agents (rain, sun, etc.)
 - Do not move the appliance when is running.
 - The appliance was not designed to be used under rain and must not be deposited outdoor or in damp places.
- In case of failure and/or malfunction of the appliance, turn it off and don't tamper it. For repairs apply only to the manufacturer or to a service center authorized by the same and require the use of genuine spare parts.

Failure to comply with the above may compromise the security of the device.

- If you decide not to use a device of this type any more, it must be made inoperative by cutting the power cord after removing the plug from the socket. It is also recommended to make harmless those parts of the equipment which may constitute a danger, especially for children who might use an abandoned appliance for their games.
- To avoid dangerous overheating, it is recommended to extend the power cord to its full length and use the appliance as recommended in "USING THE MACHINE".

During the functioning, the socket must be easily accessible in the event that becomes necessary to unplug the appliance. Do not place the appliance under a socket so that the wire doesn't interfere with the correct use of the machine.

- Do not leave the appliance plugged in unnecessarily. Unplug it from the power supply when the device is not used.
- After use, always switch off the unit and remove the plug from the socket.
- After each use, always perform a thorough cleaning of all parts in contact with food, as mentioned under "Cleaning the slicer".
- Do not block the openings, ventilation or heat dissipation slots.
- If the power cord of this appliance is damaged, it must be replaced by a service center authorized by the manufacturer, as special tools are required.

Before performing any operation turn off the appliance and disconnect the power plug from the socket.

Make sure the power cord does not protrude from the floor to avoid that someone can pull it also inadvertently knocking the appliance.

- Place the appliance on a horizontal and firm supporting plane, whose surface is not sensitive (eg. Lacquered furniture, tablecloths etc.). Make sure that the appliance is safely supported.
- Do not place the appliance on or near heat sources. Place the appliance far from sinks and faucets.
- The blades are sharp; handle with care. Do not use the appliance if the blades are damaged.
- Never immerse the appliance in water.
- Do not use the appliance in environments containing explosive, combustible gases or flammable liquids (paints, glues, spray cans, etc.). **DANGER OF EXPLOSION AND FIRE.**

Safety and Warranty

- This device is intended for domestic and professional use.
- This appliance must be used only for the purpose for which it was designed, that is for slicing food products in respect to the directives and regulations reported in the declaration of conformity.

Any other use is considered improper and dangerous.

The manufacturer can not be held responsible for any damage caused by improper, erroneous and unreasonable use.

- Do not remove safety devices and do not alter or remove mechanical and electrical guards.
- Always use protective scratchproof gloves for cleaning and maintenance.
- Do not operate the empty appliance.
- In case of problems with the appliance, contact an authorized service center. Do not attempt to repair the device yourself. Any repair work carried out on the device by unauthorized personnel will void the warranty even if its life had not come to an end.
- If you have any doubts regarding the contents of the user guide or require additional information, please contact the manufacturer or technical support immediately quoting the clause number of the topic in question.
- No part of this publication shall be reproduced or transmitted without written permission from the manufacturer.
- Use of the machine requires great concentration, **PAY ATTENTION AT ALL TIMES!**
- Do not wear loose-fitting clothes particularly with open sleeves; where necessary use suitable headgear to cover hair.
- When slicing, do not allow anyone to approach the slicer, especially the blade.

WARNINGS OF USE

- Do not remove, cover or alter the rating plates fitted to the machine body and ensure their prompt replacement in case of damage.
- Ensure that the product tray, receiving tray, surrounding areas and floor are kept clean and dry at all times.
- Do not use the slicer as a supporting surface or lay any object on it that is extraneous to normal slicing operations.
- Place and remove the goods to be sliced on the sliding plate only with the platter completely retracted (away from the blade) and the cart totally towards the operator.
- DO NOT use slicing accessories that have not been supplied by the slicer manufacturer.
- Do not damage the blade by cutting hard objects (bones, etc.).
- If the size of the food to be sliced are higher than those indicated under "Working cut" in the table "Technical data", reduce its size to work safely.

ELECTRICAL AND MECHANICAL SAFETY DEVICES

The mechanical safety devices taken are the following:

- A series of aluminium and transparent plastic guards on the product carriage.

Safety and Warranty

The electrical safety devices taken are the following:

- Start/stop button that requires the machine voluntary restart in case of an outage or interruption of the power supply.
- Start up and stop are performed with the button connected to a control auxiliary network that prevents accidental start ups of the appliance after a possible electrical power cut. Do not tamper, remove nor bypass, under no circumstances, the safety devices installed on the equipment.
- All the models are equipped with a ventilated motor.

RESIDUAL RISKS

During slicer use, cleaning and maintenance operations, notwithstanding all the possible cautions taken during the design and the construction of the machine, residual risks (cutting) still exist during use or during cleaning or maintenance. Therefore be careful and **PAY THE UTMOST ATTENTION** to what you are doing. **DO NOT** use the machine if you are not in perfect psychological and physical conditions. **DO NOT ALLOW** anyone near the machine when it is in use. **ALWAYS** wear gloves that can resist cuts or tears when cleaning, lubricating or sharpening the blade.

RESIDENTIAL USERS: Vendor assumes no liability for parts or labor coverage for component failure or other damages resulting from installation in non-commercial or residential applications. The right is reserved to deny shipment for residential usage; if this occurs, you will be notified as soon as possible.

1 YEAR PARTS AND LABOUR BENCH WARRANTY

Within the warranty period, contact Omcan Inc. at 1-800-465-0234 to schedule a drop off to either an Omcan authorized service depot in the area, or to an Omcan Service warehouse to repair the equipment.

Unauthorized maintenance will void the warranty. Warranty covers electrical and part failures not improper use.

Please see <https://omcan.com/disclaimer> for complete info.

WARNING:

The packaging components are classified as normal solid urban waste and can therefore be disposed of without difficulty.

In any case, for suitable recycling, we suggest disposing of the products separately (differentiated waste) according to the current norms.

DO NOT DISCARD ANY PACKAGING MATERIALS IN THE ENVIRONMENT!

Technical Specifications

| Model | MS-IT-0300-CE | MS-IT-0330-CE | MS-IT-0350 |
|----------------------|--|---------------|--|
| Blade Size | 12" / 300mm | 13" / 330mm | 14" / 350mm |
| Power | 0.5 HP | | |
| Slicing Volume* | 1 hour | | |
| RPM | 280 | 260 | |
| Cutting Size | 10.2" x 8.7" 260 x 220mm | | 11.8" x 9.8" 230 x 250mm |
| Cut Thickness | 0-16 mm | | |
| Electrical | 110V / 60Hz / 1Ph | | |
| Weight | 75 lbs. / 34 kgs. | | 94.8 lbs. / 43 kgs. |
| Packaging Weight | 88 lbs. / 39.9 kgs. | | 110.2 lbs. / 50 kgs. |
| Dimensions | 21.65" x 28" x 21.65" 550 x 711 x 550mm | | 25.6" x 32.3" x 25.2" 650 x 820 x 640mm |
| Packaging Dimensions | 22.8" x 28" x 24.8" 579 x 711 x 630mm | | 25.6" x 32.7" x 27.6" 650 x 830 x 701mm |
| Item Number | 46162 | 46163 | 39583 |

*Results may vary due to product consistency and temperature.

Installation

UNPACKING

When taking delivery of the slicer, ensure that the packaging is fully intact; if this is not the case, please advise the courier or local dealer immediately. In order to remove the slicer from the packaging, please proceed as follows:

- Cut and remove the plastic bands.
- Open the box and take out the instruction booklet.
- Proceed as described hereafter.
 - Remove the safeguards (carton and polyurethane foam) inside the box.
 - Lift the machine with great care and place on a solid surface.
 - Remove the plastic bag in which the slicer is wrapped. Check that all components specified in the delivery note and this instruction booklet are present and fully intact.
- Should any faults be noted, such as:
 - Dents to the frame or guards.
 - Controls that are either not working or broken.
 - Missing items or other problems. Please advise the courier, manufacturer and service centre immediately.
 - Carefully dispose of packaging components (bands, cardboard, polystyrene, polythene bags, etc.) as reported below and in accordance with the standards of the Country of use.

Installation

The packing components (bands, cardboard, polystyrene, etc.) are products assimilable to the urban solid refusals.

DO NOT DUMP PACKAGING! DISPOSE OF WASTE RESPONSIBLY!

ENVIRONMENTAL CONDITIONS OF THE MACHINE USE

- Temperature from -5°C to +40°C.
- Relative humidity max 95%.

INSTALLATION

Place the slicer on a well leveled, smooth, dry and stable plane ,suitable to support its weight.

ELECTRIC CONNECTION

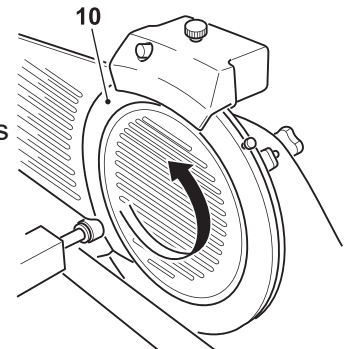
Install the slicer in the immediate vicinity of an outlet to CE standards derived from a system that complies with applicable regulations.

It is the user's responsibility to verify the suitability and proper functioning of the electrical system (supply line, outlet, distribution panel, differential thermal magnetic circuit breaker protection, system grounding).

Before executing the connection check that the characteristics of the power supply network correspond to those indicated on the nameplate of the slicer.

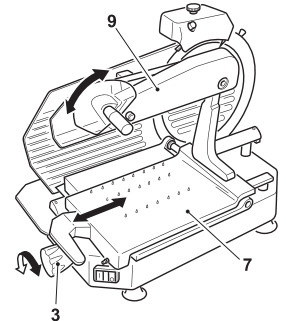
CONTROL OF OPERATION AND BLADE ROTATION DIRECTION

- Press the button "I" (1) to start the machine and verify whether the warning light is on (x4).
- Check that the blade (10) rotates in the direction indicated by the arrow (counterclockwise looking at the machine from the blade plate side).
- Check the smoothness of the product tray (7) and of the product pusher (9).
- Check the operation and adjustment of the graduated knob and the gauge plate (3).



INSTALLATION AND PRELIMINARY CHECKS

- Check the smoothness of the product tray (7) and of the product pusher (9).
- Check the operation and adjustment of the graduated knob and the gauge plate (3).

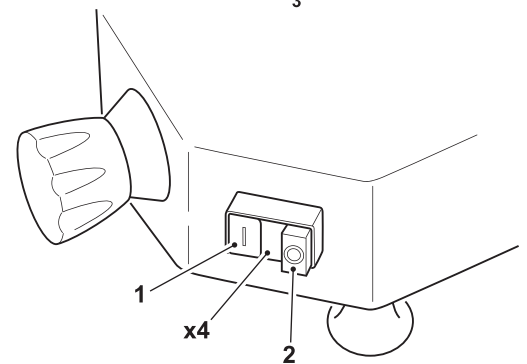


START AND STOP BUTTON

- Press the white and green button (1) to start the blade.
- If the warning light turns on (x4) indicates that the machine works correctly.
- Press the black or red button (2) to stop the blade movement.

The thickness of the slices is adjustable rotating the knob (3), with graduated scale, anticlockwise.

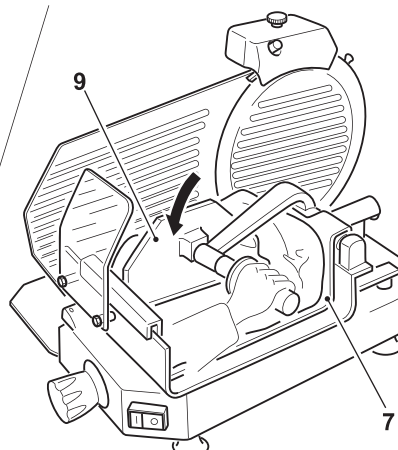
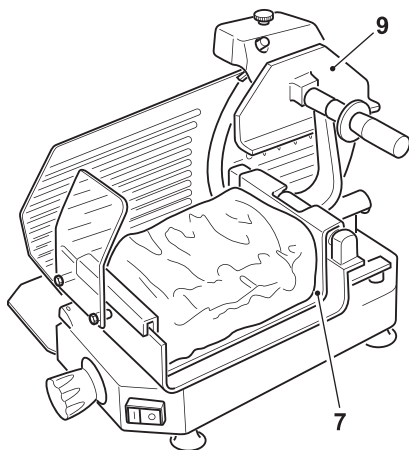
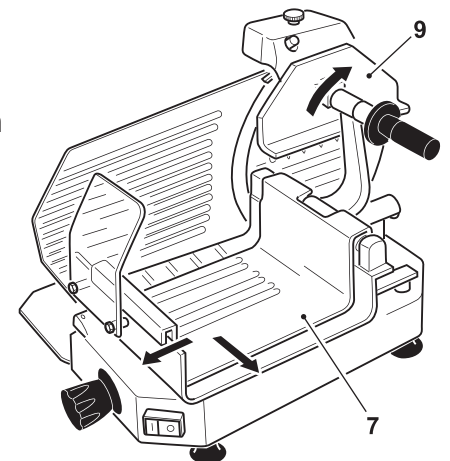
Regulation field: see the “Technical description and intended use conditions”.



LOADING THE PRODUCT ON THE TRAY AND SLICING

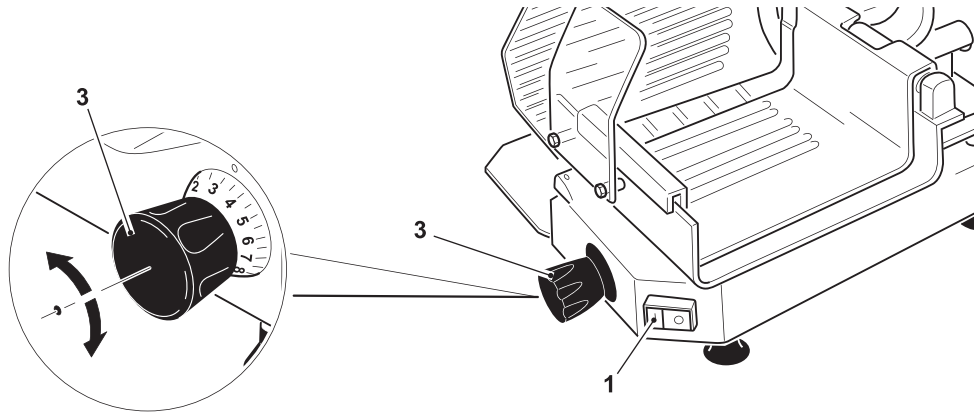
Check that the slice thickness regulation knob (3) is correctly placed on '0'.

- Draw back the carriage completely (7) (towards the operator) to loading position.
- Lift the pusher (9) and place it in rest position.
- Lay the product to be sliced on the carriage (7).
- Secure by means of the pusher (9) by exerting a slight pressure.



Operation

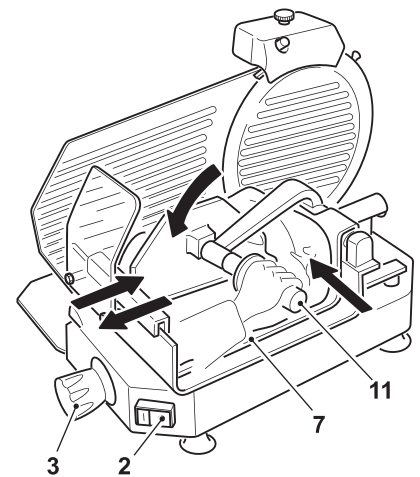
- Adjust the slice thickness with the knob (3). Start the blade by pressing on the white or green button (1).



- Hold the handle (11) fixed to the plate and start the alternate cutting movement. The product progressing towards the gauge plate occurs by pushing towards the blade.

When finished, return the thickness control knob (3) to '0' and draw the carriage back (7).

- Stop the blade by pressing the black or red button (2).



Maintenance

SLICER CLEANING

The machines have to be carefully cleaned at least once a day; if it is necessary more frequently. After a shorter or longer period of inactivity clean the slicer before use.

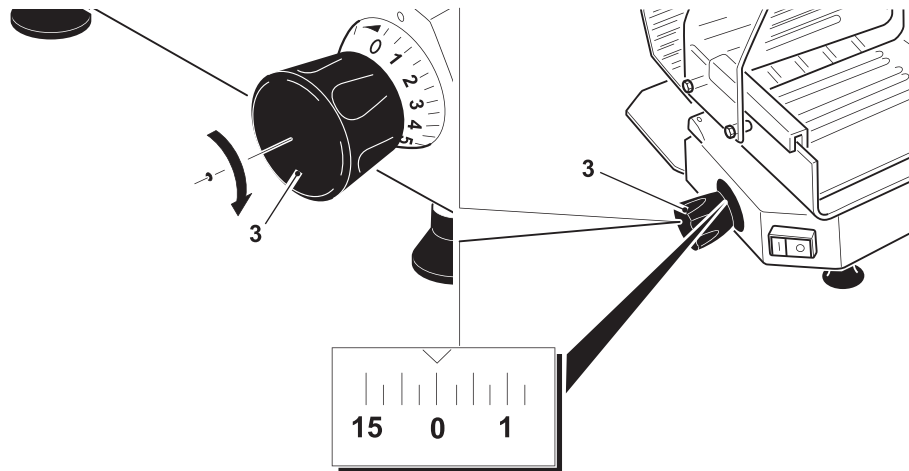
WARNING: Cutting hazard! Use protective cut- and tear-resistant gloves and perform all operations with extreme care. PAY ATTENTION AT ALL TIMES!

DISASSEMBLING THE MACHINE FOR CLEANING

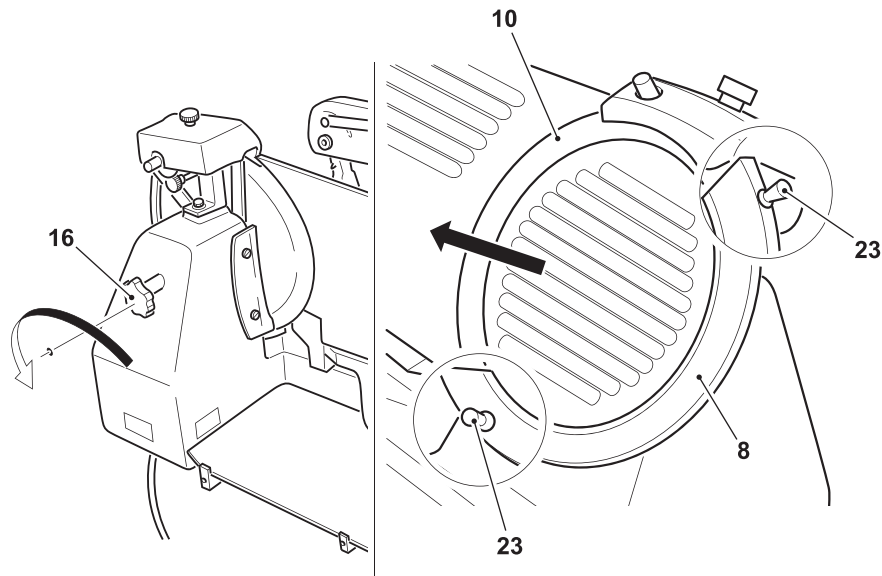
- Disconnect the plug from the mains power supply.

Maintenance

Take to '0' the adjustment knob of the gauge plate (3).

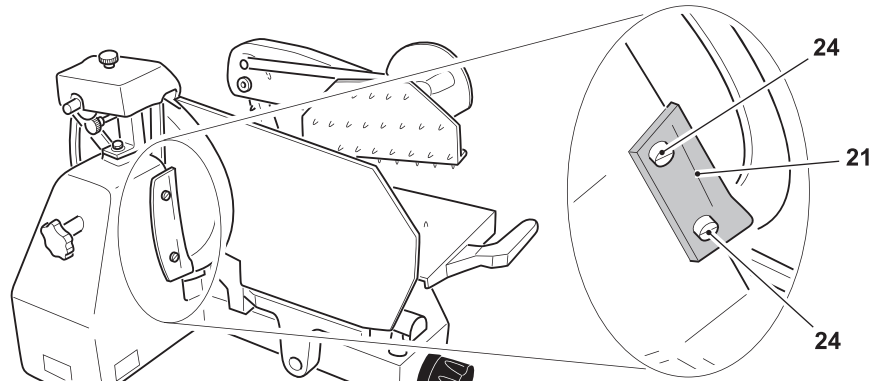


- Remove the various components as described in the following paragraphs.
- Fully unscrew (counterclockwise rotation) the blade guard locking tie rod (16).
- If the blade guard (8) is blocked, press on the rod knob (16) to move it.
- Remove the tie rod (16) and remove the blade guard (8) using only the special lateral knobs (23).

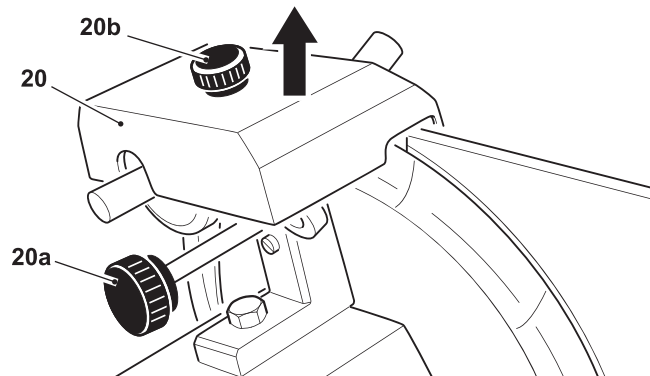


Maintenance

- Loosen and remove the two screws with knurled head (24).
- Remove the deflector (21).



- Loosen the knob (20a) and remove the sharpener (20).
- Take the sharpener (20) from the knob (20b) and remove it by lifting it.



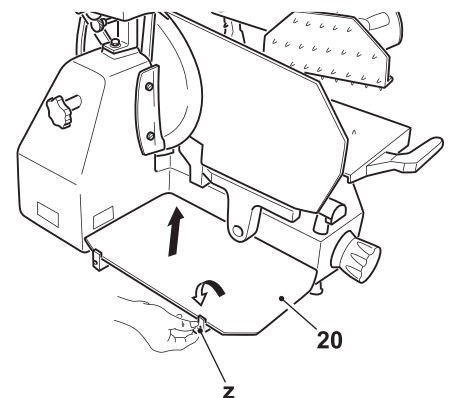
For the machine's body and blade cleaning use only a cloth dampened in water or alcohol and a biodegradable frothy dishwasher cleanser at pH 7-8, at a temperature at least of +30°C.

Do not clean the machine:

- With water or vapor jets or similar methods.
- With corrosive cleansers.
- In the dishwasher.

DISASSEMBLING THE SLICED HOLDER PLATE

- Loosen the knurled screw (z) as shown in the figure and remove the plate (20) by lifting it.



BASE CLEANING

After removing all the components as described in the previous pages:

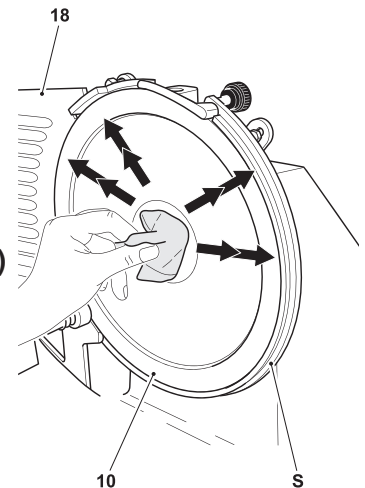
- Clean all the disassembled parts and the machine's body using only hot water (at a temperature at least of 30°C) and biodegradable frothy dishwasher (at pH 7-8).
- Use a soft cloth, spongy and possibly a nylon brush for the sharp zones of the product tray (7) and of the pusher (9).
- Rinse only with hot water and dry with soft and spongy cloths.

DO NOT clean the machine with water jets, with vapor, similar methods, with corrosive cleaners in the dishwasher.

CLEANING THE BLADE

- Press a damp cloth on the blade (10) and rub slowly moving from inside to out (towards the safety ring "S" and towards the gauge plate "18").

ALWAYS clean the knife (10) with safety ring (S) fitted and the gauge plate (18) close to the blade in the safety position.



PRODUCT TRAY UNDERPLATE AND CARRIAGE CLEANING

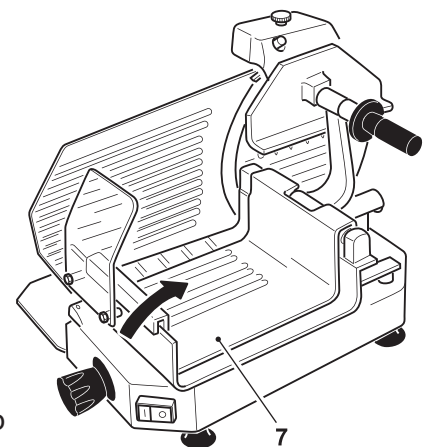
- Move the carriage (7) close to the operator and lift the product tray until it reaches rest position.
- Clean with a damp cloth and carefully dry.

MACHINE REASSEMBLING

Proceed in the opposite direction to what indicated in the previous operations.

STORE THE SLICER

- When you finish using it, after carefully have cleaned all the components (as described in the previous sections) be sure to bring the graduated knob back to "0".
- Is advised to cover the slicer with a towel to protect it from dust. If it is not intended to use the slicer for some days, store it in a separate and dry place.



Maintenance

MAINTENANCE

The operator may perform the following maintenance operations:

- Blade sharpening: periodically (periodicity and duration depend obviously on the equipment use; working times and processed material type).
- Lubrication of carriage sliding guides: weekly.
- Lubrication of pusher sliding bar: weekly.
- Visual check of the power cord and of the gland on the machine's base conditions: periodically.

The maintenance operations must be performed always after disconnecting the machine from the power network and, if it's not specifically necessary another position, with the slice thickness regulation knob on '0'.

The maintenance operations to be entrusted to personnel authorized by the manufacturer are the following:

- Blade replacement.
- Sharpener's emery-wheels replacement.
- Motor belt tension regulation.
- Motor transmission belt replacement.
- Underbase wiring's components replacement.
- Structural parts repair, underbase components repair.

BLADE SHARPENING

Accurately clean the machine as indicated in the previous paragraphs before proceeding in the operations.

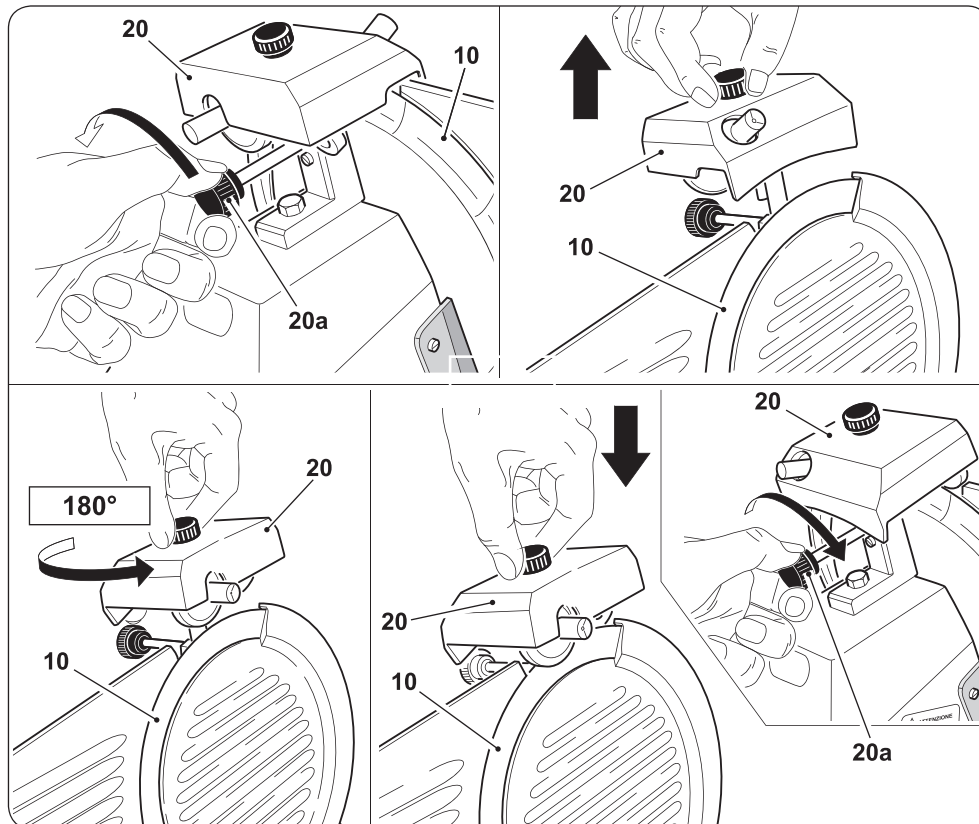
Sharpening can be performed up to a reduction of 12mm of the blade's diameter nominal. Over that value IS MANDATORY TO CHANGE THE BLADE entrusting the operation ONLY to personnel authorized by the manufacturer.

WARNING: Cutting hazard! Use protective cut- and tear resistant gloves and perform all operations with extreme care. PAY ATTENTION AT ALL TIMES!

Maintenance

The blade sharpening should be performed periodically, as soon as you feel a decrease in the ability of cutting blade, it should follow the instructions below:

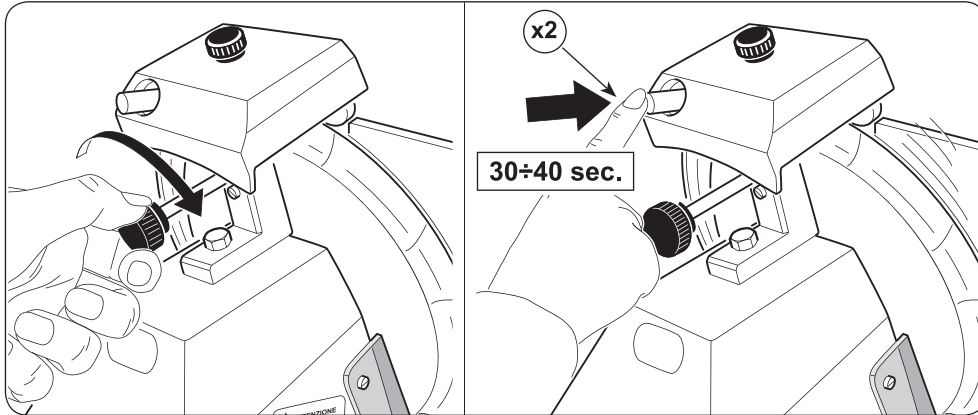
1. Carefully clean the blade (10) with denatured alcohol to degrease it after disconnecting the plug from the socket.
2. Loosen the knob (20a), lift and rotate 180° the sharpener (20) and insert the wheels on the slicer's blade. Tighten the knob (20a).



3. Trigger the switch (1) and press the little button (x2).
4. Allow the blade to rotate for about 30 to 40 seconds and then use the switch (2) to stop it checking with a slight shift (using a pencil) to the outside of the blade if the burr is formed.

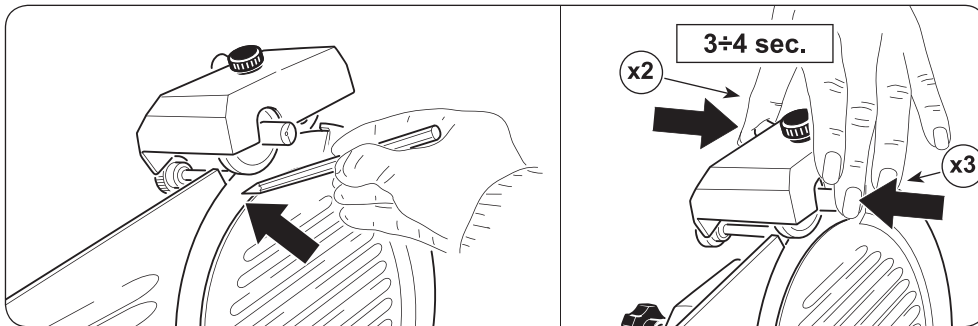
We recommend to perform this check very carefully as the blade is very sharp.

Maintenance



5. Ascertained the formation of the burr, trigger the switch again (1) for 3/4 seconds pressing the little buttons at the same time (x2 and x3).

DO NOT PROLONG THIS OPERATION BEYOND THE FEW ABOVE MENTIONED SECONDS TO PREVENT THAT THE BLADE EDGE WILL TWIST.



6. After completing sharpening, we advise cleaning the wheels using a small brush soaked in alcohol.
7. After the sharpening operation return the sharpener to its original position.

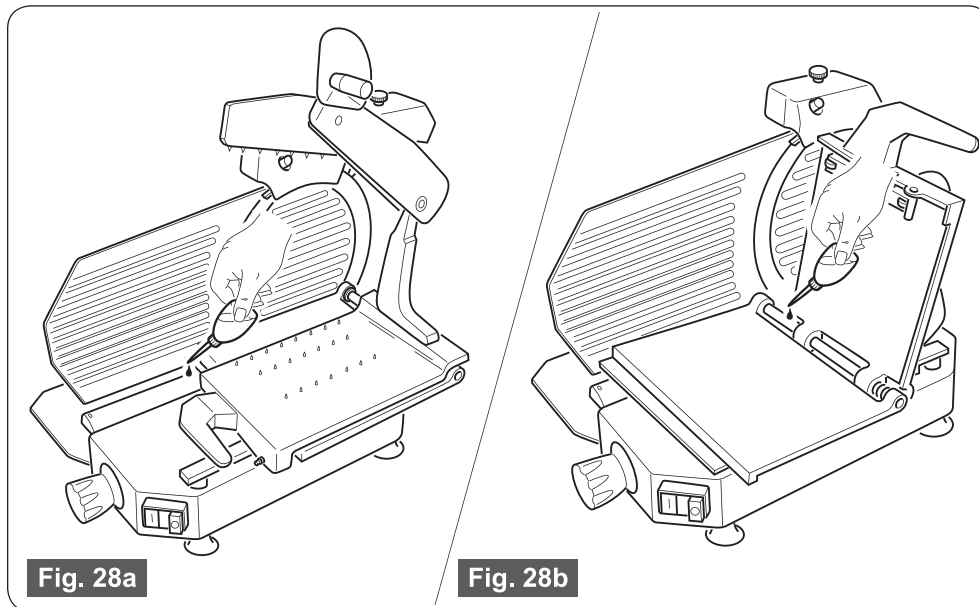
LUBRICATION

LUBRICATION OF CARRIAGE SLIDING GUIDES AND PRODUCT HOLDER PLATE (WEEKLY)

- Apply a few drops of lubricant to the guide rails and slide the assemblies back and forth 3/4 times.
- Clean where necessary wiping the excess lubricant.

Only use supplied oil (Fig. 28a).

Only use white Vaseline oil (Fig. 28b).

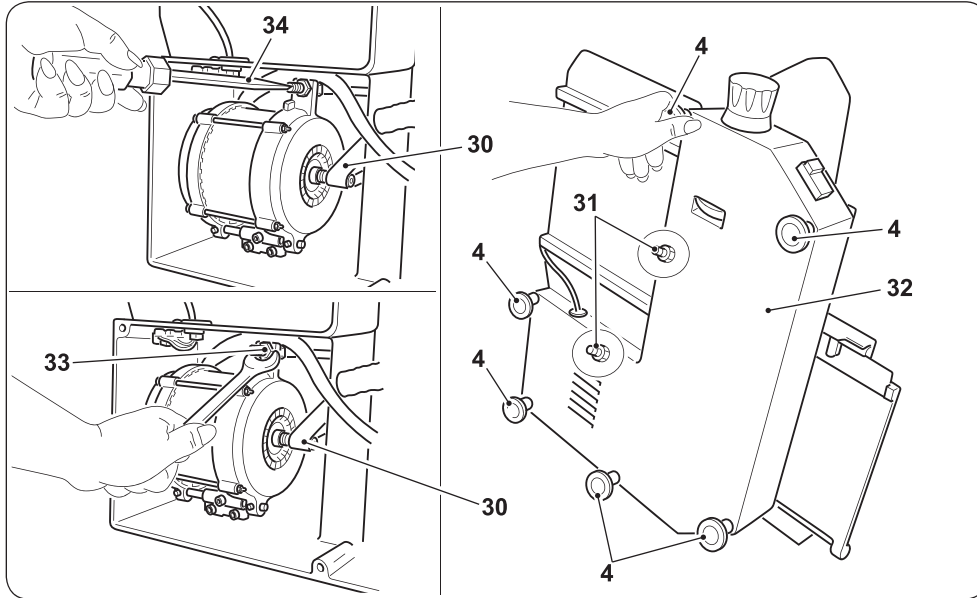


MOTOR BELT TENSION ADJUSTMENT

When after a given time the slicer has an unusual noise because of the belt (30), proceed as follows:

- Disconnect the plug from the socket.
- Lift the slicer and place it on its side.
Make sure that the slicer is stable and can not inadvertently fall.
- Unscrew the pins (4).
- Loosen the screw (31) and remove the cover (32).
- Loosen the nut (33) a few turns.
- Rotate the belt tensioner (34) until obtaining a belt optimal tension (30).
- Retighten the nut (33) then reassemble the carter (32), the screws (31) and the feet (4).
Do not over-tighten the belt. In the rotation, the engine could force and the belt may be damaged.

Maintenance



Troubleshooting

The following information is intended to aid in identifying and correcting defects and faults that may occur during use of the machine.

Some failures can be resolved by the user; others require precise technical skills or special skills, and must be carried out by qualified personnel with recognized expertise and experience in the specific area of intervention.

Do not disassemble the internal parts of the slicer. The manufacturer declines all responsibility for any damage caused by tampering.

The table below shows the most common problems that occur during the use of the slicer and the operations required to eliminate the possible causes.

| PROBLEM | CAUSES | SOLUTION |
|--|---------------------------------------|---|
| Pressing the green or white button the machine will not start. | No power supply. | Check that the plug is properly inserted. |
| | Defective electrical control circuit. | Call technical assistance. |
| Pressing the green or white button the machine starts, but will not turn the operation light on. | Defective indicator. | Do not use the machine with light indicator off; consult promptly the customer service. |

Troubleshooting

| | | |
|--|---------------------------------------|---|
| The machine starts but vibrates, the motor is very hot and there is bad smell. | Defective motor or transmission. | Do not use the machine, consult promptly the customer service. |
| The machine under load slows or stops. | Defective transmission. | Consult the customer service. |
| Excessive resistance at cutting of the product. | The blade is blunt. | Sharpen the blade. |
| The slices are ragged and/or irregularly shaped. | The blade is blunt. | Sharpen the blade. |
| | Blade excessively worn. | Consult the customer service. |
| The blade sharpening is unsatisfactory. | Worn wheels. | Replace the wheels; Call the customer service. |
| The product tray does not slide. | Insufficient guides lubrication. | Lubricate. |
| Pressing the black or red button the machine does not stop. | Defective electrical control circuit. | Stop the machine pulling the plug from the network and call customer service. |

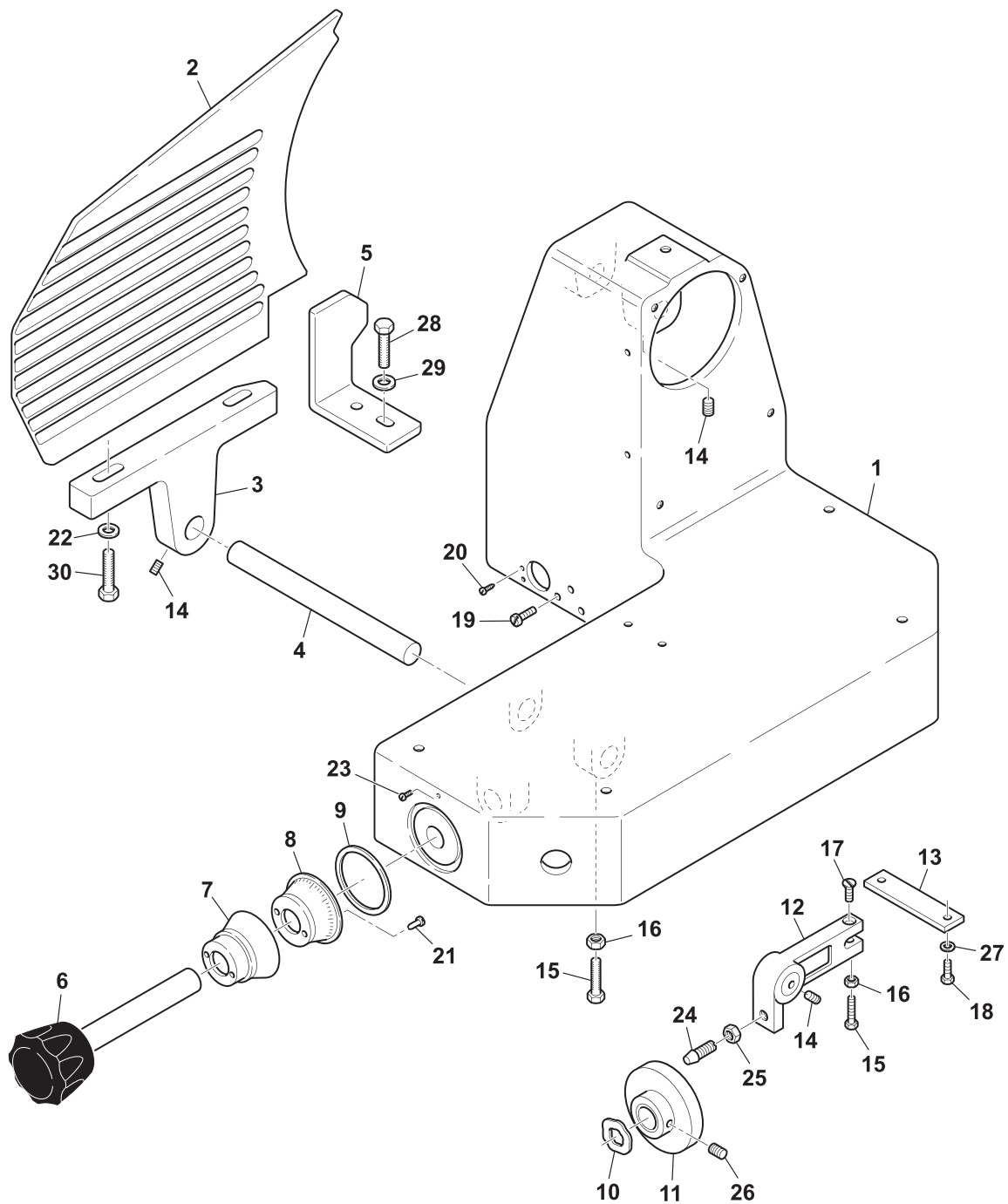
Parts Breakdown

Model MS-IT-0300-CE 46162

Model MS-IT-0330-CE 46163

Model MS-IT-0350 39583

Base



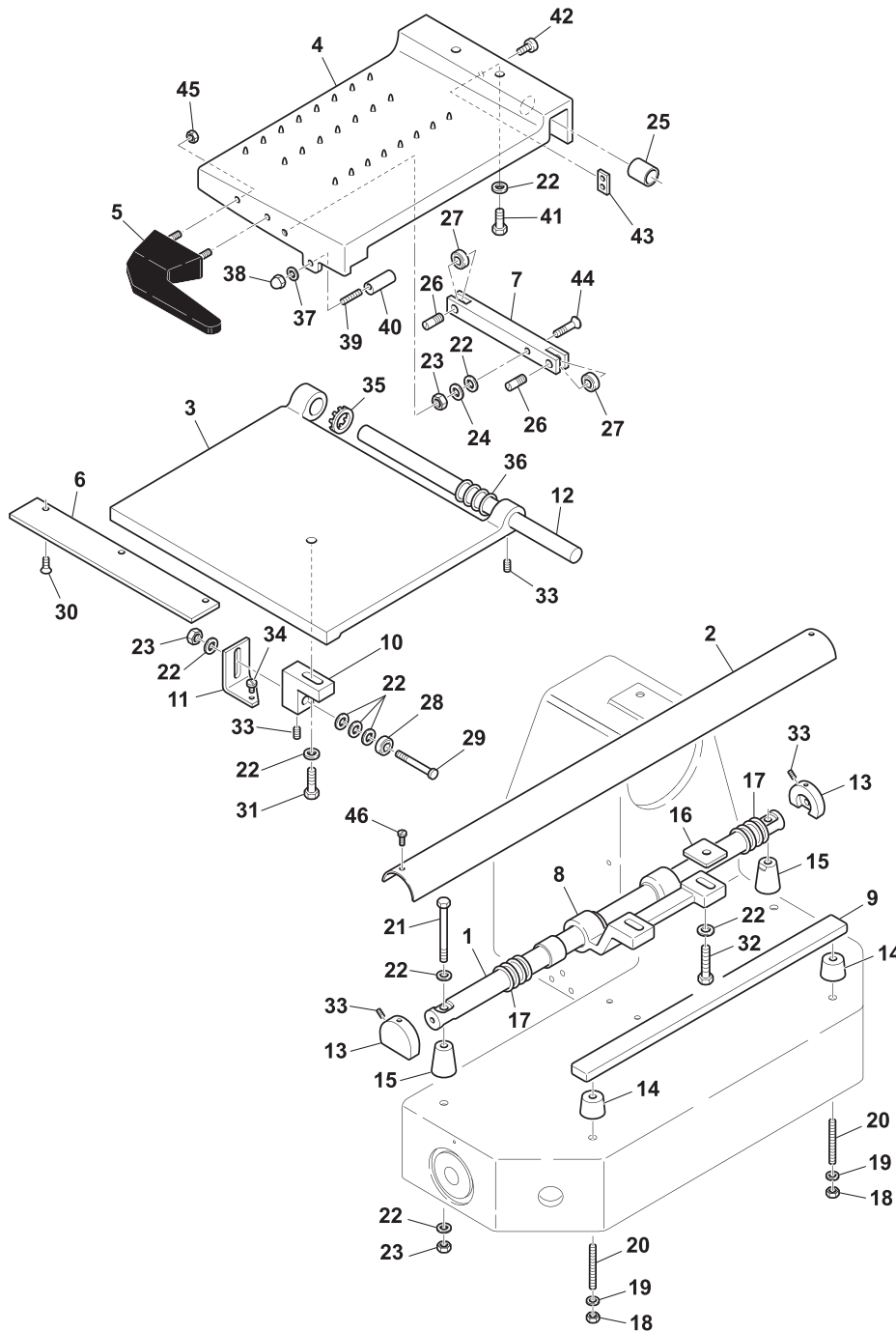
Parts Breakdown

Model MS-IT-0300-CE 46162

Model MS-IT-0330-CE 46163

Model MS-IT-0350 39583

Guide



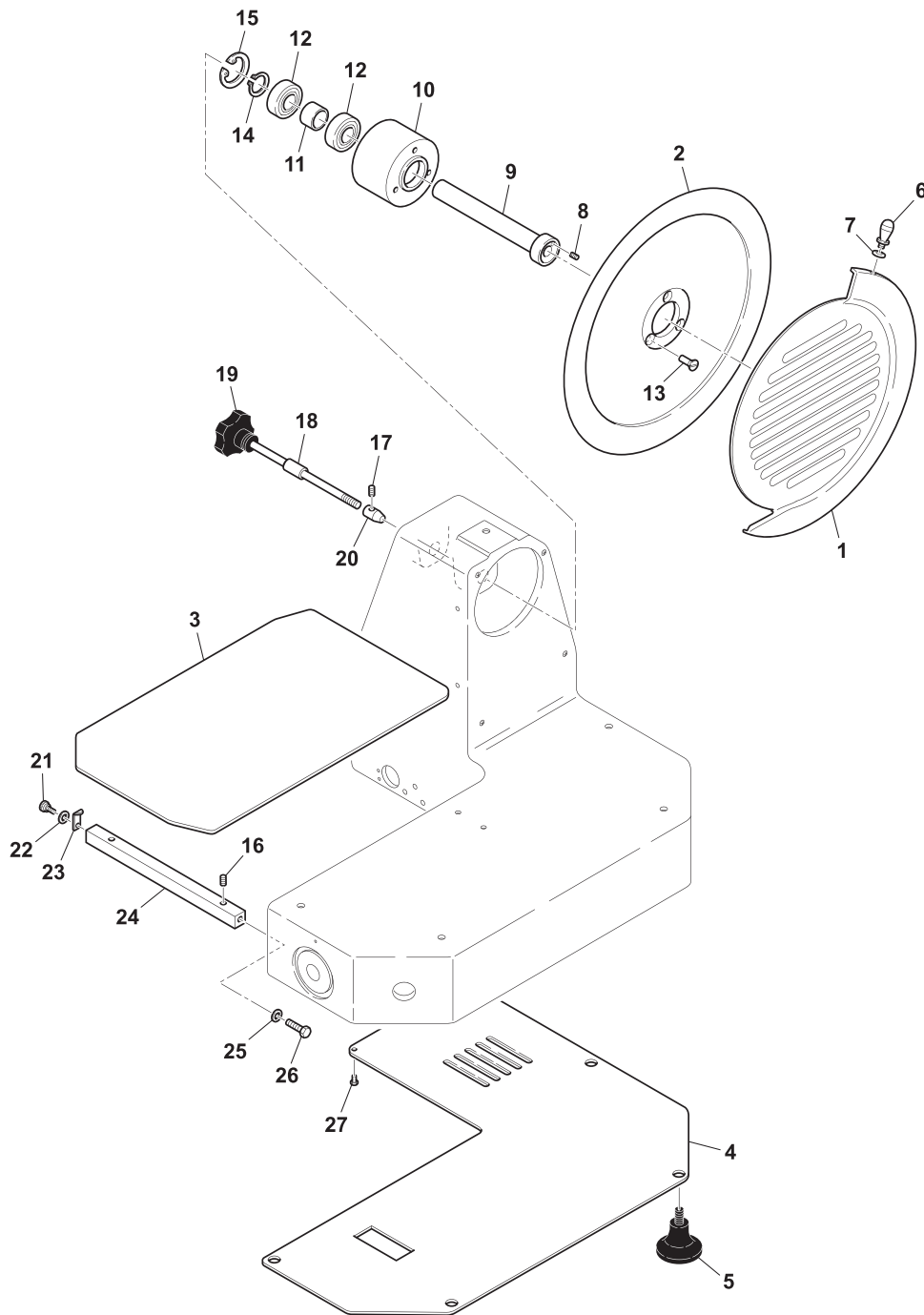
Parts Breakdown

Model MS-IT-0300-CE 46162

Model MS-IT-0330-CE 46163

Model MS-IT-0350 39583

Blade



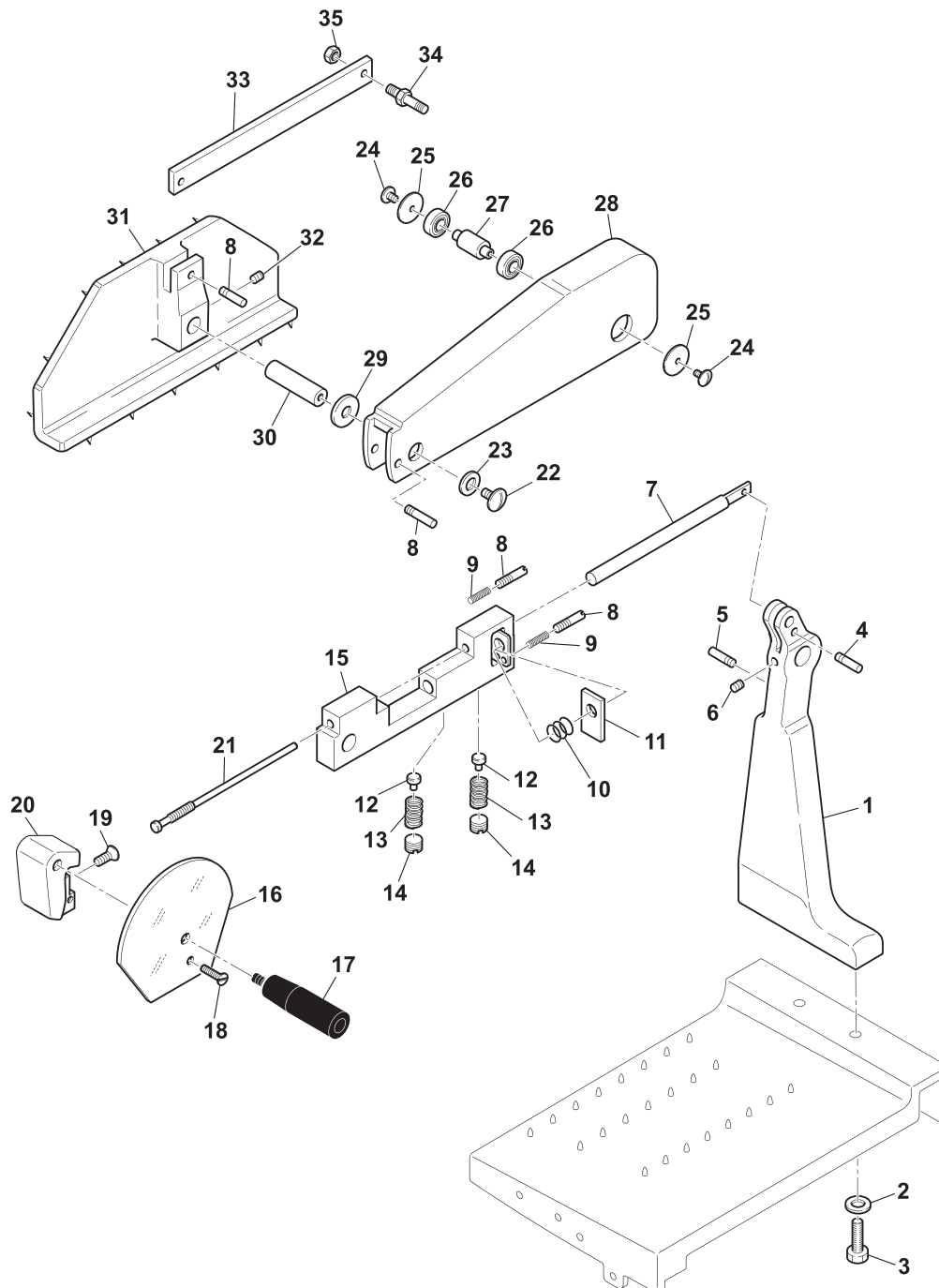
Parts Breakdown

Model MS-IT-0300-CE 46162

Model MS-IT-0330-CE 46163

Model MS-IT-0350 39583

Product Grip



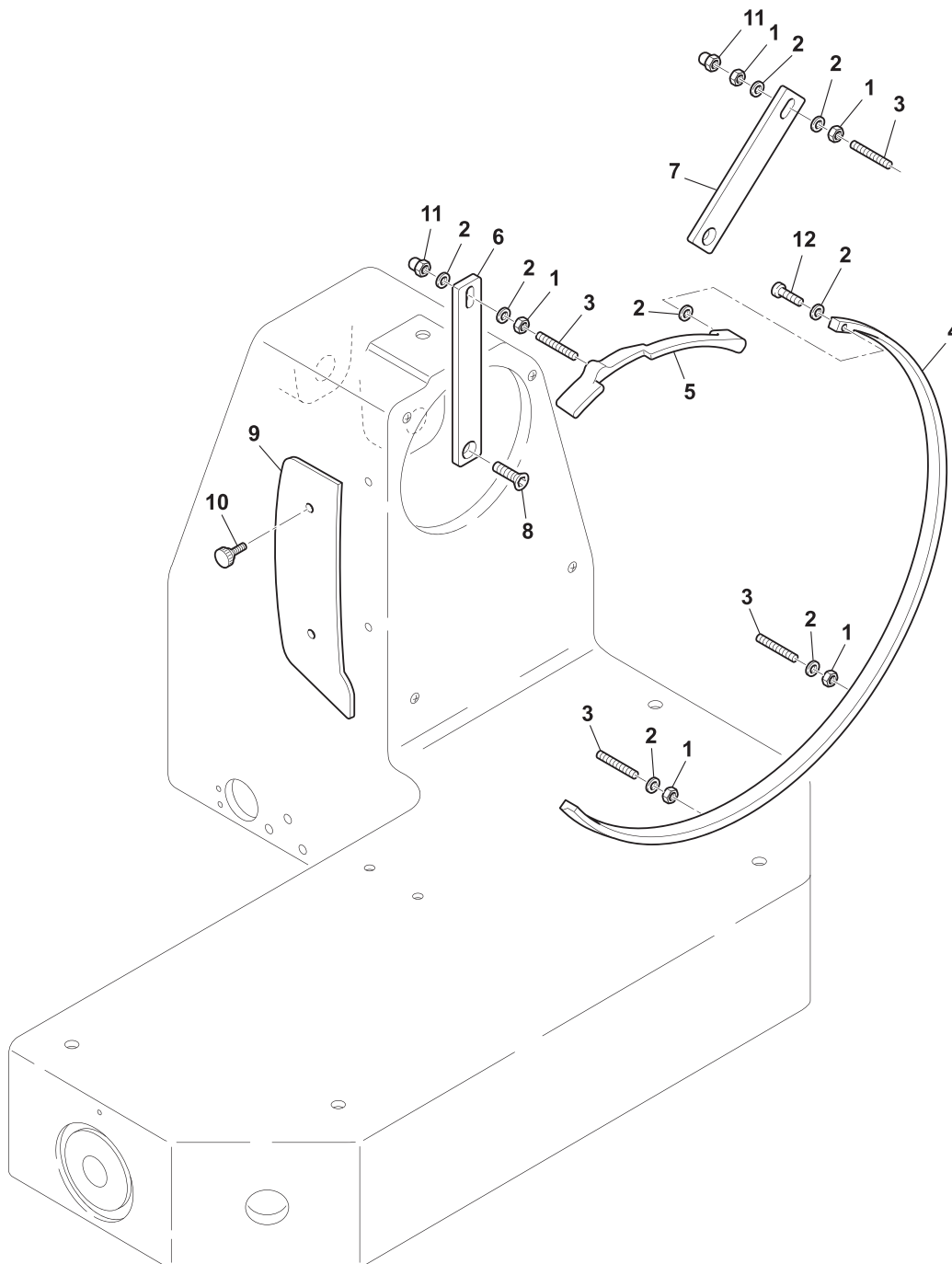
Parts Breakdown

Model MS-IT-0300-CE 46162

Model MS-IT-0330-CE 46163

Model MS-IT-0350 39583

Blade Guard



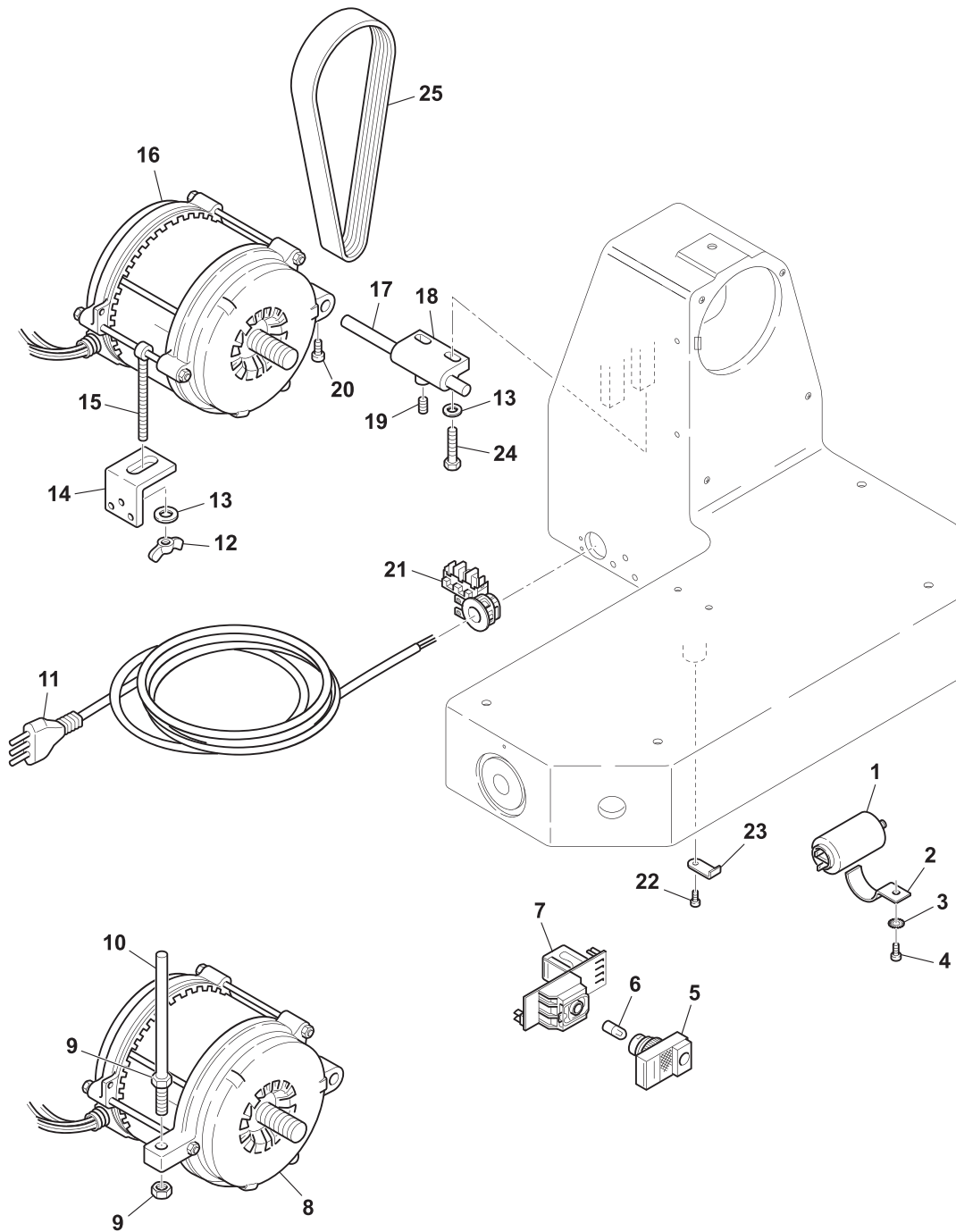
Parts Breakdown

Model MS-IT-0300-CE 46162

Model MS-IT-0330-CE 46163

Model MS-IT-0350 39583

Electrical Components



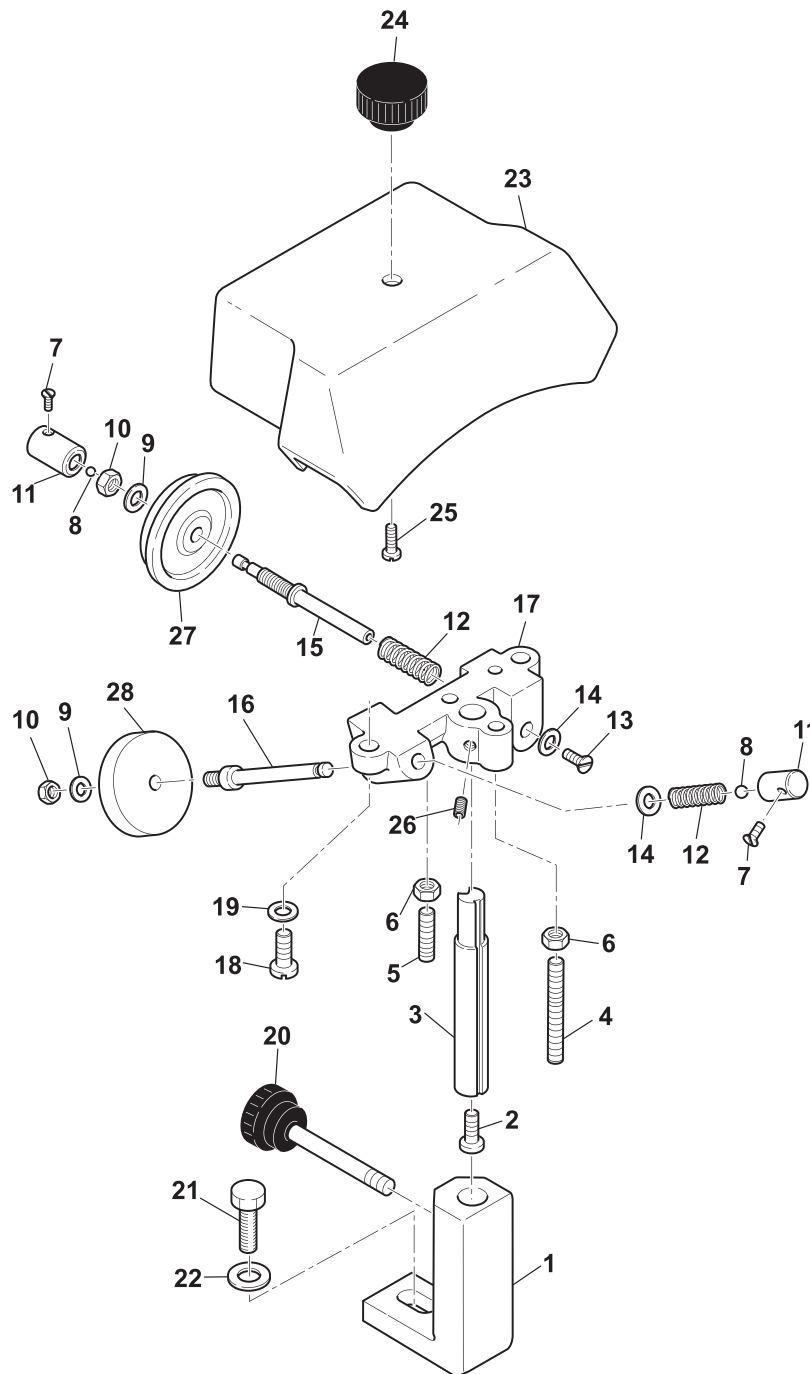
Parts Breakdown

Model MS-IT-0300-CE 46162

Model MS-IT-0330-CE 46163

Model MS-IT-0350 39583

Sharpening Assembly



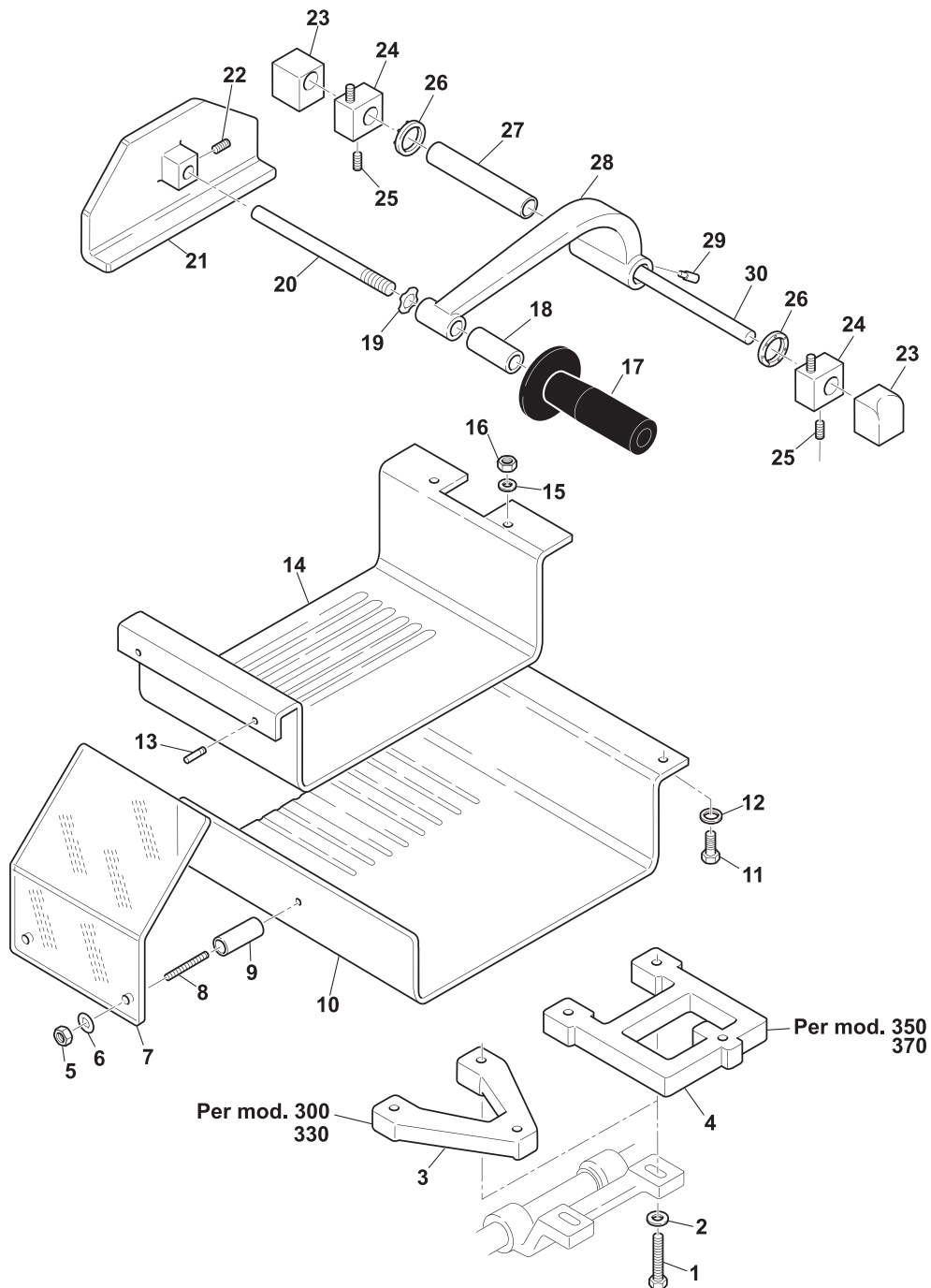
Parts Breakdown

Model MS-IT-0300-CE 46162

Model MS-IT-0330-CE 46163

Model MS-IT-0350 39583

Product Holder Assembly



Parts Breakdown

Model MS-IT-0300-CE 46162

Base

| Item No. | Description | Position | Item No. | Description | Position | Item No. | Description | Position |
|----------|-------------------------------|-----------|----------|--------------------------------|----------|----------|------------------------------|----------|
| 31881 | Housing for 46162 | 1 | AG151 | Complete Fork for 46162 | 12 | 31900 | Washer 8 for 46162 | 22 |
| 31882 | Guide Plate for 46162 | 2 | AG152 | Group Plate for 46162 | 13 | 31901 | Copper Rivet for 46162 | 23 |
| 31883 | Guide Plate Support for 46162 | 3 | 31893 | Set Screw 8x10 T C for 46162 | 14 | 31902 | Set Screw - Capped for 46162 | 24 |
| 31884 | Guide Plate Shaft for 46162 | 4 | 31894 | Bolt 5x20 for 46162 | 15 | 31903 | Nut 8 for 46162 | 25 |
| AG149 | Bracket for 46162 | 5 | 31895 | Nut 5 for 46162 | 16 | 31904 | Set Screw 6x8 TP for 46162 | 26 |
| AG150 | Graduated Knob for 46162 | 6 - 8, 21 | 31896 | Screw TPSV 5x10 for 46162 | 17 | 31905 | Washer 5 for 46162 | 27 |
| 31887 | Index Knob Bushing for 46162 | 9 | 31897 | Screw TC 5x10 for 46162 | 18 | 31906 | Screw TE 6x12 for 46162 | 28 |
| 31888 | Wavy Washer for 46162 | 10 | 31898 | Screw TE 6x12 for 46162 | 19 | 31907 | Washer 6 for 46162 | 29 |
| 17851 | Cam for 46162 | 11 | 31899 | Tapping Screw 2.9x12 for 46162 | 20 | 31908 | Screw TE 8x40 for 46162 | 30 |

Guide

| Item No. | Description | Position | Item No. | Description | Position | Item No. | Description | Position |
|----------|-------------------------------|----------|----------|----------------------------|----------|----------|---------------------------------|----------|
| AG153 | Round Bar for 46162 | 1 | 31925 | Slide Bar Spring for 46162 | 17 | 31941 | Set Screw 5x8 T C for 46162 | 33 |
| 31910 | Slide Bar Cover for 46162 | 2 | 31926 | Nut 6 for 46162 | 18 | 31942 | Set Screw PVC for 46162 | 34 |
| 31911 | Bottom Plate for 46162 | 3 | 31927 | Washer 6 for 46162 | 19 | 31943 | Rubber Washer 15 for 46162 | 35 |
| 31912 | Top Plate for 46162 | 4 | 31928 | Set Screw 6x30 for 46162 | 20 | 31944 | Carriage Plate Spring for 46162 | 36 |
| 17863 | Carriage Handle for 46162 | 5 | 31929 | Screw TE 8x40 for 46162 | 21 | 31945 | Washer 5 for 46162 | 37 |
| 31914 | Flat Bar for 46162 | 6 | 31930 | Washer 8 for 46162 | 22 | 31946 | Acorn Cap for 46162 | 38 |
| 31915 | Bearing Support Bar for 46162 | 7 | 31931 | Nut 8 for 46162 | 23 | 31947 | Set Screw 5x20 TP for 46162 | 39 |
| 31916 | Carriage Support for 46162 | 8 | 31932 | Washer 8 for 46162 | 24 | 31948 | Set Screw PVC for 46162 | 40 |
| 31917 | Carriage Rail for 46162 | 9 | 31933 | Bushing for 46162 | 25 | 31949 | Screw TE 8x20 for 46162 | 41 |
| AG155 | Underplate Pipette for 46162 | 10 | 31934 | Set Screw 6x12 for 46162 | 26 | 31950 | Screw TPSV 4x10 for 46162 | 42 |
| AG156 | Plate Supp Bearing for 46162 | 11 | AG158 | Bearing 626 X2 for 46162 | 27 | 31951 | Flat Latch for 46162 | 43 |
| 31920 | Carriage Plate Rod for 46162 | 12 | AG159 | Bearing 608 for 46162 | 28 | 31952 | Threaded Stud 8 for 46162 | 44 |
| AG157 | Round Bar Cover for 46162 | 13 | 31937 | Bearing Pin 8 for 46162 | 29 | 31953 | Nut 6 for 46162 | 45 |
| 31922 | Rail Support for 46162 | 14 | 31938 | Screw TPSV 5x10 for 46162 | 30 | 31954 | Screw TC 4x5 for 46162 | 46 |
| 31923 | Slide Bar Support for 46162 | 15 | 31939 | Screw TE 8x20 for 46162 | 31 | | | |
| 31924 | Spacer Plate for 46162 | 16 | 31940 | Screw TE 8x25 for 46162 | 32 | | | |

Parts Breakdown

Model MS-IT-0300-CE 46162

Blade

| Item No. | Description | Position | Item No. | Description | Position | Item No. | Description | Position |
|----------|---|----------|----------|----------------------------|----------|----------|--------------------------|----------|
| AG160 | Blade Cover for 46162 | 1 | 31964 | Pulley for 46162 | 10 | 31973 | Tie Rod Spacer for 46162 | 20 |
| 63974 | Slicer Blade 300mm 40mm Bore 3 Bore Holes 250mm Cover for 46162 | 2 | 31965 | Bearing Spacer for 46162 | 11 | 31974 | Thumb Screw for 46162 | 21 |
| 31957 | Aluminum Plate for 46162 | 3 | AG163 | Bearing 6004 2RS for 46162 | 12 | 31975 | Washer for 46162 | 22 |
| 31958 | Bottom Cover for 46162 | 4 | 31967 | Clip for 46162 | 14 | 31976 | Plate Stop for 46162 | 23 |
| 31959 | Foot for 46162 | 5 | 31968 | Clip for 46162 | 15 | 31977 | Support Rail for 46162 | 24 |
| AG161 | Knob All.ZIGR. Blade Cover for 46162 | 6 | 31969 | Set Screw for 46162 | 16 | 31978 | Washer 8 for 46162 | 25 |
| 31961 | Washer 4 for 46162 | 7 | 31970 | Set Screw 6x8 TC for 46162 | 17 | 31979 | Screw TE 8x20 for 46162 | 26 |
| 31962 | Set Screw 5x8 TP for 46162 | 8 | 31971 | Set Screw PVC for 46162 | 18 | 31980 | Tapping Screw for 46162 | 27 |
| AG162 | Spindle Pin for 46162 | 9 | 32194 | Tie Rod for 46162 | 19 | | | |

Product Grip

| Item No. | Description | Position | Item No. | Description | Position | Item No. | Description | Position |
|----------|----------------------------------|----------|----------|--|----------|----------|----------------------------|----------|
| 31981 | Support for Pusher Arm for 46162 | 1 | 31993 | Spring 9x15 for 46162 | 13 | 32005 | Washer 4x25 for 46162 | 25 |
| 31982 | Washer 8 for 46162 | 2 | AG165 | Brake Register for 46162 | 14 | AG168 | Bearing 608ZZ for 46162 | 26 |
| 31983 | Screw TE 8x20 for 46162 | 3 | 31995 | Presser Brake for 46162 | 15 | 32007 | Bearing Spindle for 46162 | 27 |
| 31984 | Set Screw 5x20 for 46162 | 4 | AG166 | Paradite Plexiglass for 46162 | 16 | 32008 | Pusher Arm for 46162 | 28 |
| 31985 | Set Screw 5x16 for 46162 | 5 | 17862 | Meat Grip Handle for 46162 | 17 | 32009 | PVC Washer 15x25 for 46162 | 29 |
| 31986 | Set Screw 6x8 TC for 46162 | 6 | 31998 | Screw TPSV 4x10 for 46162 | 18 | 32010 | Presser Spacer for 46162 | 30 |
| 31987 | Rod Brake for 46162 | 7 | 31999 | Screw TPSV 45x12 for 46162 | 19 | AG169 | Meat Press for 46162 | 31 |
| 31988 | Set Screw 6x19 for 46162 | 8 | 32000 | Presser Handle Bracket for 46162 | 20 | 32012 | Set Screw 6x6 TC for 46162 | 32 |
| 31989 | Spring 3.5x19 for 46162 | 9 | AG167 | Astina C / Seiger Unlock Arm for 46162 | 21 | AG170 | Meat Presser Rod for 46162 | 33 |
| 31990 | Spring 13.5x10 for 46162 | 10 | 32002 | Screw Chrome for 46162 | 22 | 32014 | Hex Pin 8x31 for 46162 | 34 |
| 31991 | Iron Plate for 46162 | 11 | 32003 | Washer 8 for 46162 | 23 | 32015 | Locking Nut for 46162 | 35 |
| AG164 | Brake Pin for 46162 | 12 | 32004 | Screw TPSV 4x10 for 46162 | 24 | AG171 | Complete Arm for 46162 | |

Blade Guard

| Item No. | Description | Position | Item No. | Description | Position | Item No. | Description | Position |
|----------|--------------------------------|----------|----------|---------------------------------|----------|----------|----------------------------|----------|
| 32017 | Nut 5 for 46162 | 1 | 32021 | Safety Ring Extension for 46162 | 5 | 32025 | Meat Deflector for 46162 | 9 |
| 32018 | Washer 5 for 46162 | 2 | AG182 | Left Ring Support for 46162 | 6 | 32026 | Thumb Screw 5 MA for 46162 | 10 |
| 32019 | Set Screw 54x30 5x25 for 46162 | 3 | AG183 | Right Ring Support for 46162 | 7 | 32027 | Acorn Cap for 46162 | 11 |
| 32020 | Ring for 46162 | 4 | 32024 | Set Screw 6x12 for 46162 | 8 | | | |

Parts Breakdown

Model MS-IT-0300-CE 46162

Electrical Components

| Item No. | Description | Position | Item No. | Description | Position | Item No. | Description | Position |
|----------|-----------------------------------|------------|----------|-------------------------------|----------|----------|--------------------------|----------|
| AG184 | Capacitor 300/8 350/6.3 for 46162 | 1 | 32035 | Wing Nut for 46162 | 12 | 32042 | Screw TC 4x10 for 46162 | 20 |
| 32029 | Capacitor Bracket for 46162 | 2 | 32036 | Washer 6 A Wide for 46162 | 13 | 32043 | Terminal Block for 46162 | 21 |
| 32030 | Washer 5 for 46162 | 3 | 32037 | Motor Bracket for 46162 | 14 | 32044 | Tapping Screw for 46162 | 22 |
| 32031 | Screw 5x10 T C for 46162 | 4 | 32038 | Adjustment Rod for 46162 | 15 | 32045 | Stop Plate for 46162 | 23 |
| 32032 | Switch - On / Off for 46162 | 5 - 7 | 32039 | Motor Support Shaft for 46162 | 17 | AG188 | Belt for 46162 | 25 |
| AG185 | Motor for 46162 | 9 - 11, 16 | AG187 | Motor Hinge for 46162 | 18 | | | |
| AG186 | Cord for 46162 | 11 | 32041 | Set Screw 5x8 T C for 46162 | 19 | | | |

Sharpening Assembly

| Item No. | Description | Position | Item No. | Description | Position | Item No. | Description | Position |
|----------|-------------------------------|----------|----------|---------------------------------|----------|----------|-----------------------------------|----------|
| AG189 | CEPR Pipette for 46162 | 1 | 32056 | Sharpener Push Button for 46162 | 11 | 32066 | Screw TE 8x20 for 46162 | 21 |
| 32047 | Screw TPSV 6x12 for 46162 | 2 | 32057 | Spring for 46162 | 12 | 32067 | Washer 8 for 46162 | 22 |
| 32048 | Shaft for Sharpener for 46162 | 3 | 32058 | Screw TC for 46162 | 13 | 32068 | Sharpener Cover for 46162 | 23 |
| 32049 | Set Screw 5x40 for 46162 | 4 | 32059 | Washer 3 for 46162 | 14 | AG190 | Hood Pommel for 46162 | 24 |
| 32050 | Set Screw 5x30 for 46162 | 5 | 32060 | Sharpener Pin for 46162 | 15 | 32070 | Screw TC 6x12 for 46162 | 25 |
| 32051 | Nut 6 for 46162 | 6 | 32061 | Sharpener Pin for 46162 | 16 | 32071 | Set Screw 6x8 TC for 46162 | 26 |
| 32052 | Sharpener Screw for 46162 | 7 | 32062 | Sharpener Body for 46162 | 17 | 18016 | Omcan G Stone 50x08x06 for 46162 | 27 |
| 32053 | Ball Bearing for 46162 | 8 | 32063 | Screw TC 4x20 for 46162 | 18 | 33032 | 45x9x6 Sharpening Stone for 46162 | 28 |
| 32054 | Washer 6 for 46162 | 9 | 32064 | Washer 4 for 46162 | 19 | | | |
| 32055 | Nut 6 for 46162 | 10 | 32065 | Sharpener Tie Rod for 46162 | 20 | | | |

Product Holder Assembly

| Item No. | Description | Position | Item No. | Description | Position | Item No. | Description | Position |
|----------|------------------------------------|----------|----------|----------------------------------|----------|----------|-----------------------------|----------|
| 32073 | Screw TE 8x35 for 46162 | 1 | 32084 | Washer 8 for 46162 | 12 | 32094 | Set Screw 6x8 TC for 46162 | 22 |
| 32074 | Washer 8 for 46162 | 2 | 32085 | Stud 5 MA for 46162 | 13 | AG195 | All Outside Block for 46162 | 23 |
| 32075 | Carriage Plate Support V for 46162 | 3 | 32086 | Carriage Plate - Small for 46162 | 14 | AG196 | All Inside Block for 46162 | 24 |
| 32077 | Nut for 46162 | 5 | 32087 | Washer 6x18 for 46162 | 15 | 32097 | Set Screw 6x8 TC for 46162 | 25 |
| AG191 | Washer 6x18 for 46162 | 6 | 32088 | Nut 6 for 46162 | 16 | 32098 | Rubber Washer for 46162 | 26 |
| AG192 | Flat Hand Guard for 46162 | 7 | AG193 | Pommel Fly on TCV for 46162 | 17 | AG197 | Tube X TC Block for 46162 | 27 |
| 32080 | Stud 6x50 for 46162 | 8 | AG194 | Leg Extension for 46162 | 18 | AG198 | Bracket for 46162 | 28 |
| 32081 | Spacer for 46162 | 9 | 32091 | Wavy Washer for 46162 | 19 | 32101 | Stud PVC for 46162 | 29 |
| 32082 | Carriage Plate - Large for 46162 | 10 | 32092 | Stud 12 MA for 46162 | 20 | 32102 | Presser Rod for 46162 | 30 |
| 32083 | Screw TE 8x20 for 46162 | 11 | 32093 | Presser Plate for 46162 | 21 | | | |

Parts Breakdown

Model MS-IT-0330-CE 46163

Base

| Item No. | Description | Position | Item No. | Description | Position | Item No. | Description | Position |
|----------|-------------------------------|-----------|----------|--------------------------------|----------|----------|------------------------------|----------|
| 32103 | Housing for 46163 | 1 | AG201 | Complete Fork for 46163 | 12 | 32122 | Washer 8 for 46163 | 22 |
| 32104 | Guide Plate for 46163 | 2 | AG202 | Group Plate for 46163 | 13 | 32123 | Copper Rivet for 46163 | 23 |
| 32105 | Guide Plate Support for 46163 | 3 | 32115 | Set Screw 8x10 T C for 46163 | 14 | 32124 | Set Screw - Capped for 46163 | 24 |
| 32106 | Guide Plate Shaft for 46163 | 4 | 32116 | Bolt 5x20 for 46163 | 15 | 32125 | Nut 8 for 46163 | 25 |
| AG199 | Ceppetto for 46163 | 5 | 32117 | Nut 5 for 46163 | 16 | 32126 | Set Screw 6x8 TP for 46163 | 26 |
| AG200 | Graduated Knob for 46163 | 6 - 8, 21 | 32118 | Screw TPSV 5x10 for 46163 | 17 | 32127 | Washer 5 for 46163 | 27 |
| 32109 | Index Knob Bushing for 46163 | 9 | 32119 | Screw TC 5x10 for 46163 | 18 | 32128 | Screw TE 6x12 for 46163 | 28 |
| 32110 | Wavy Washer for 46163 | 10 | 32120 | Screw TE 6x12 for 46163 | 19 | 32129 | Washer 6 for 46163 | 29 |
| 32111 | Cam for 46163 | 11 | 32121 | Tapping Screw 2.9x12 for 46163 | 20 | 32130 | Screw TE 8x40 for 46163 | 30 |

Guide

| Item No. | Description | Position | Item No. | Description | Position | Item No. | Description | Position |
|----------|-------------------------------|----------|----------|----------------------------|----------|----------|---------------------------------|----------|
| AG203 | Round Bar for 46163 | 1 | 32147 | Slide Bar Spring for 46163 | 17 | 32163 | Set Screw 5x8 T C for 46163 | 33 |
| 32132 | Slide Bar Cover for 46163 | 2 | 32148 | Nut 6 for 46163 | 18 | AG208 | Screw TE for 46163 | 34 |
| 32133 | Bottom Plate for 46163 | 3 | 32149 | Washer 6 for 46163 | 19 | 32165 | Rubber Washer 15 for 46163 | 35 |
| 32134 | Top Plate for 46163 | 4 | 32150 | Set Screw 6x30 for 46163 | 20 | 32166 | Carriage Plate Spring for 46163 | 36 |
| 32135 | Carriage Handle for 46163 | 5 | 32151 | Screw TE 8x40 for 46163 | 21 | 32167 | Washer 5 for 46163 | 37 |
| 32136 | Flat Bar for 46163 | 6 | 32152 | Washer 8 for 46163 | 22 | 32168 | Acorn Cap for 46163 | 38 |
| 32137 | Bearing Support Bar for 46163 | 7 | 32153 | Nut 8 for 46163 | 23 | 32169 | Set Screw 5x20 TP for 46163 | 39 |
| 32138 | Carriage Support for 46163 | 8 | 32154 | Washer 8 for 46163 | 24 | 32170 | Set Screw PVC for 46163 | 40 |
| 32139 | Carriage Rail for 46163 | 9 | 32155 | Bushing for 46163 | 25 | 32171 | Screw TE 8x20 for 46163 | 41 |
| AG154 | Underplate Pipette for 46163 | 10 | 32156 | Set Screw 6x12 for 46163 | 26 | AG209 | Screw TPSV 4x10 for 46163 | 42 |
| AG204 | Plate Supp Bearing for 46163 | 11 | AG206 | Bearing 626 for 46163 | 27 | 32173 | Flat Latch for 46163 | 43 |
| 32142 | Carriage Plate Rod for 46163 | 12 | AG207 | Bearing 608 for 46163 | 28 | 32174 | Thread Stud 8 for 46163 | 44 |
| AG205 | Round Bar Cover for 46163 | 13 | 32159 | Bearing Pin 8 for 46163 | 29 | 32175 | Nut 6 for 46163 | 45 |
| 32144 | Rail Support for 46163 | 14 | 32160 | Screw TPSV 5x10 for 46163 | 30 | 32176 | Screw TC 4x5 for 46163 | 46 |
| 32145 | Slide Bar Support for 46163 | 15 | 32161 | Screw TE 8x20 for 46163 | 31 | | | |
| 32146 | Spacer Plate for 46163 | 16 | 32162 | Screw TE 8x25 for 46163 | 32 | | | |

Parts Breakdown

Model MS-IT-0330-CE 46163

Blade

| Item No. | Description | Position | Item No. | Description | Position | Item No. | Description | Position |
|----------|------------------------------|----------|----------|----------------------------|----------|----------|--------------------------|----------|
| 17857 | Blade Shield for 46163 | 1 | 32186 | Pulley for 46163 | 10 | 32194 | Tie Rod for 46163 | 19 |
| 44857 | Blade 330 40-3-270 for 46163 | 2 | 32187 | Bearing Spacer for 46163 | 11 | 32195 | Tie Rod Spacer for 46163 | 20 |
| 32179 | Aluminum Plate for 46163 | 3 | AG212 | Bearing 6004 2RS for 46163 | 12 | 32196 | Thumb Screw for 46163 | 21 |
| 31958 | Bottom Cover for 46163 | 4 | AG213 | Screw TPSV for 46163 | 13 | 32197 | Washer for 46163 | 22 |
| 32181 | Foot for 46163 | 5 | 32189 | Clip for 46163 | 14 | 32198 | Plate Stop for 46163 | 23 |
| AG210 | Knife Knob for 46163 | 6 | 32190 | Clip for 46163 | 15 | 32199 | Support Rail for 46163 | 24 |
| 32183 | Washer 4 for 46163 | 7 | 32191 | Set Screw for 46163 | 16 | 32200 | Washer 8 for 46163 | 25 |
| 32184 | Set Screw 5x8 TP for 46163 | 8 | 32192 | Set Screw 6x8 TC for 46163 | 17 | 32201 | Screw TE 8x20 for 46163 | 26 |
| AG211 | Spindle Pin for 46163 | 9 | 32193 | Set Screw PVC for 46163 | 18 | 32202 | Tapping Screw for 46163 | 27 |

Product Grip

| Item No. | Description | Position | Item No. | Description | Position | Item No. | Description | Position |
|----------|----------------------------------|----------|----------|--|----------|----------|----------------------------|----------|
| 32203 | Support for Pusher Arm for 46163 | 1 | 32215 | Spring 9x15 for 46163 | 13 | 32227 | Washer 4x25 for 46163 | 25 |
| 32204 | Washer 8 for 46163 | 2 | AG215 | Bead for 46163 | 14 | AG218 | Bearing 608 ZZ for 46163 | 26 |
| 32205 | Screw TE 8x20 for 46163 | 3 | 32217 | Presser Brake for 46163 | 15 | 32229 | Bearing Spindle for 46163 | 27 |
| 32206 | Set Screw 5x20 for 46163 | 4 | AG216 | Plexiglass Paradite for 46163 | 16 | 32230 | Pusher Arm for 46163 | 28 |
| 32207 | Set Screw 5x16 for 46163 | 5 | 32219 | Meat Grip Handle for 46163 | 17 | 32231 | PVC Washer 15x25 for 46163 | 29 |
| 32208 | Set Screw 6x8 TC for 46163 | 6 | 32220 | Screw TPSV 4x10 for 46163 | 18 | 32232 | Presser Spacer for 46163 | 30 |
| 32209 | Rod Brake for 46163 | 7 | 32221 | Screw TPSV 45x12 for 46163 | 19 | AG219 | Meat Press for 46163 | 31 |
| 32210 | Set Screw 6x19 for 46163 | 8 | 32222 | Presser Handle Bracket for 46163 | 20 | 32234 | Set Screw 6x6 TC for 46163 | 32 |
| 32211 | Spring 3.5x19 for 46163 | 9 | AG217 | Astina C/Seiger SBL BRA PRES for 46163 | 21 | AG220 | Meat Presser Rod for 46163 | 33 |
| 32212 | Spring 13.5x10 for 46163 | 10 | 32224 | Screw Chrome for 46163 | 22 | 32236 | Hex Pin 8x31 for 46163 | 34 |
| 32213 | Iron Plate for 46163 | 11 | 32225 | Washer 8 for 46163 | 23 | 32237 | Locking Nut for 46163 | 35 |
| AG214 | Brake Pin for 46163 | 12 | 32226 | Screw TPSV 4x10 for 46163 | 24 | AG221 | Complete Arm 330 for 46163 | |

Blade Guard

| Item No. | Description | Position | Item No. | Description | Position | Item No. | Description | Position |
|----------|--------------------------------|----------|----------|---------------------------------|----------|----------|----------------------------|----------|
| 32239 | Nut 5 for 46163 | 1 | 32243 | Safety Ring Extension for 46163 | 5 | AG222 | Parafette for 46163 | 9 |
| 32240 | Washer 5 for 46163 | 2 | 32244 | Support Ring for 46163 | 6 | 32248 | Thumb Screw 5 MA for 46163 | 10 |
| 32241 | Set Screw 54x30 5x25 for 46163 | 3 | 32245 | Support Ring for 46163 | 7 | 32249 | Acorn Cap for 46163 | 11 |
| 32242 | Ring for 46163 | 4 | 32246 | Set Screw 6x12 for 46163 | 8 | | | |

Parts Breakdown

Model MS-IT-0330-CE 46163

Electrical Components

| Item No. | Description | Position | Item No. | Description | Position | Item No. | Description | Position |
|----------|-----------------------------------|------------|----------|-------------------------------|----------|----------|--------------------------|----------|
| AG223 | Capacitor 300/8 350/6.3 for 46163 | 1 | 32257 | Wing Nut for 46163 | 12 | 32264 | Screw TC 4x10 for 46163 | 20 |
| 32251 | Capacitor Bracket for 46163 | 2 | 32258 | Washer 6 A Wide for 46163 | 13 | 32265 | Terminal Block for 46163 | 21 |
| 32252 | Washer 5 for 46163 | 3 | 32259 | Motor Bracket for 46163 | 14 | 32266 | Tapping Screw for 46163 | 22 |
| 32253 | Screw 5x10 T C for 46163 | 4 | 32260 | Adjustment Rod for 46163 | 15 | 32267 | Stop Plate for 46163 | 23 |
| AG224 | Switch for 46163 | 5 - 7 | 32261 | Motor Support Shaft for 46163 | 17 | AG228 | Belt for 46163 | 25 |
| AG225 | Motor for 46163 | 9 - 11, 16 | AG227 | Motor Hinge for 46163 | 18 | | | |
| AG226 | Cord for 46163 | 11 | 32263 | Set Screw 5x8 T C for 46163 | 19 | | | |

Sharpening Assembly

| Item No. | Description | Position | Item No. | Description | Position | Item No. | Description | Position |
|----------|-------------------------------|----------|----------|---------------------------------|----------|----------|-----------------------------------|----------|
| AG229 | Pipette for 46163 | 1 | 32278 | Sharpener Push Button for 46163 | 11 | 32288 | Screw TE 8x20 for 46163 | 21 |
| 32269 | Screw TPSV 6x12 for 46163 | 2 | 32279 | Spring for 46163 | 12 | 32289 | Washer 8 for 46163 | 22 |
| 32270 | Shaft for Sharpener for 46163 | 3 | 32280 | Screw TC for 46163 | 13 | 32290 | Sharpener Cover for 46163 | 23 |
| 32271 | Set Screw 5x40 for 46163 | 4 | 32281 | Washer 3 for 46163 | 14 | AG230 | Canopy Pommel for 46163 | 24 |
| 32272 | Set Screw 5x30 for 46163 | 5 | 32282 | Sharpener Pin for 46163 | 15 | 32292 | Screw TC 6x12 for 46163 | 25 |
| 32273 | Nut 6 for 46163 | 6 | 32283 | Sharpener Pin for 46163 | 16 | 32293 | Set Screw 6x8 TC for 46163 | 26 |
| 32274 | Sharpener Screw for 46163 | 7 | 32284 | Sharpener Body for 46163 | 17 | 18016 | Omcan G Stone 50x08x06 for 46163 | 27 |
| 32275 | Ball Bearing for 46163 | 8 | 32285 | Screw TC 4x20 for 46163 | 18 | 33032 | 45x9x6 Sharpening Stone for 46163 | 28 |
| 32276 | Washer 6 for 46163 | 9 | 32286 | Washer 4 for 46163 | 19 | | | |
| 32277 | Nut 6 for 46163 | 10 | 32287 | Sharpener Tie Rod for 46163 | 20 | | | |

Product Holder Assembly

| Item No. | Description | Position | Item No. | Description | Position | Item No. | Description | Position |
|----------|------------------------------------|----------|----------|----------------------------------|----------|----------|-----------------------------|----------|
| 32295 | Screw TE 8x35 for 46163 | 1 | 32306 | Washer 8 for 46163 | 12 | 32316 | Set Screw 6x8 TC for 46163 | 22 |
| 32296 | Washer 8 for 46163 | 2 | 32307 | Stud 5 MA for 46163 | 13 | AG235 | All Outside Block for 46163 | 23 |
| 32297 | Carriage Plate Support V for 46163 | 3 | 32308 | Carriage Plate - Small for 46163 | 14 | AG236 | All Inside Block for 46163 | 24 |
| 32299 | Nut for 46163 | 5 | 32309 | Washer 6x18 for 46163 | 15 | 32319 | Set Screw 6x8 TC for 46163 | 25 |
| AG231 | Washer 6x18 for 46163 | 6 | 32310 | Nut 6 for 46163 | 16 | 32320 | Rubber Washer for 46163 | 26 |
| AG232 | Flat Hand Guard for 46163 | 7 | AG233 | Flywheel Pommel 330 for 46163 | 17 | AG237 | Tube X Block TC for 46163 | 27 |
| 32302 | Stud 6x50 for 46163 | 8 | AG234 | Extension Leg All for 46163 | 18 | AG238 | Bracket for 46163 | 28 |
| 32303 | Spacer for 46163 | 9 | 32313 | Wavy Washer for 46163 | 19 | 32323 | Stud PVC for 46163 | 29 |
| 32304 | Carriage Plate - Large for 46163 | 10 | 32314 | Stud 12 MA for 46163 | 20 | 32324 | Presser Rod for 46163 | 30 |
| 32305 | Screw TE 8x20 for 46163 | 11 | 32315 | Presser Plate for 46163 | 21 | | | |

Parts Breakdown

Model MS-IT-0350 39583

Base

| Item No. | Description | Position | Item No. | Description | Position | Item No. | Description | Position |
|----------|-------------------------------|-----------|----------|--------------------------------|----------|----------|------------------------------|----------|
| 32325 | Housing for 39583 | 1 | AG241 | Complete Fork for 39583 | 12 | 32344 | Washer 8 for 39583 | 22 |
| 32326 | Guide Plate for 39583 | 2 | AG242 | Group Plate for 39583 | 13 | 32345 | Copper Rivet for 39583 | 23 |
| 32327 | Guide Plate Support for 39583 | 3 | 32337 | Set Screw 8x10 T C for 39583 | 14 | 32346 | Set Screw - Capped for 39583 | 24 |
| 32328 | Guide Plate Shaft for 39583 | 4 | 32338 | Bolt 5x20 for 39583 | 15 | 32347 | Nut 8 for 39583 | 25 |
| AG239 | Ceppetto for 39583 | 5 | 32339 | Nut 5 for 39583 | 16 | 32348 | Set Screw 6x8 TP for 39583 | 26 |
| AG240 | Graduated Knob for 39583 | 6 - 8, 21 | 32340 | Screw TPSV 5x10 for 39583 | 17 | 32349 | Washer 5 for 39583 | 27 |
| 32331 | Index Knob Bushing for 39583 | 9 | 32341 | Screw TC 5x10 for 39583 | 18 | 32350 | Screw TE 6x12 for 39583 | 28 |
| 32332 | Wavy Washer for 39583 | 10 | 32342 | Screw TE 6x12 for 39583 | 19 | 32351 | Washer 6 for 39583 | 29 |
| 32333 | Cam for 39583 | 11 | 32343 | Tapping Screw 2.9x12 for 39583 | 20 | 32352 | Screw TE 8x40 for 39583 | 30 |

Guide

| Item No. | Description | Position | Item No. | Description | Position | Item No. | Description | Position |
|----------|------------------------------|----------|----------|----------------------------|----------|----------|---------------------------------|----------|
| AG243 | Round Bar for 39583 | 1 | 32369 | Slide Bar Spring for 39583 | 17 | 32385 | Set Screw 5x8 T C for 39583 | 33 |
| AG244 | Round Bar Cover for 39583 | 2 | 32370 | Nut 6 for 39583 | 18 | AG252 | Screw TE for 39583 | 34 |
| 32355 | Bottom Plate for 39583 | 3 | 32371 | Washer 6 for 39583 | 19 | 32387 | Rubber Washer 15 for 39583 | 35 |
| 32356 | Top Plate for 39583 | 4 | 32372 | Set Screw 6x30 for 39583 | 20 | 32388 | Carriage Plate Spring for 39583 | 36 |
| 32357 | Carriage Handle for 39583 | 5 | 32373 | Screw TE 8x40 for 39583 | 21 | 32389 | Washer 5 for 39583 | 37 |
| AG245 | Strap FE for 39583 | 6 | 32374 | Washer 8 for 39583 | 22 | 32390 | Acorn Cap for 39583 | 38 |
| AG246 | Shoe for 39583 | 7 | 32375 | Nut 8 for 39583 | 23 | 32391 | Set Screw 5x20 TP for 39583 | 39 |
| 32360 | Carriage Support for 39583 | 8 | 32376 | Washer 8 for 39583 | 24 | 32392 | Set Screw PVC for 39583 | 40 |
| AG247 | Square Bar for 39583 | 9 | 32377 | Bushing for 39583 | 25 | 32393 | Screw TE 8x20 for 39583 | 41 |
| AG248 | Underplate Pipette for 39583 | 10 | 32378 | Set Screw 6x12 for 39583 | 26 | 32394 | Screw TPSV 4x10 for 39583 | 42 |
| AG249 | Plate Supp Bearing for 39583 | 11 | AG250 | Bearing 626 for 39583 | 27 | 32395 | Flat Latch for 39583 | 43 |
| 32364 | Carriage Plate Rod for 39583 | 12 | AG251 | Bearing 608 for 39583 | 28 | 32396 | Threaded Stud 8 for 39583 | 44 |
| 32365 | Slide Bar Cap for 39583 | 13 | 32381 | Bearing Pin 8 for 39583 | 29 | 32397 | Nut 6 for 39583 | 45 |
| 32366 | Rail Support for 39583 | 14 | 32382 | Screw TPSV 5x10 for 39583 | 30 | 32398 | Screw TC 4x5 for 39583 | 46 |
| 32367 | Slide Bar Support for 39583 | 15 | 32383 | Screw TE 8x20 for 39583 | 31 | | | |
| 32368 | Spacer Plate for 39583 | 16 | 32384 | Screw TE 8x25 for 39583 | 32 | | | |

Parts Breakdown

Model MS-IT-0350 39583

Blade

| Item No. | Description | Position | Item No. | Description | Position | Item No. | Description | Position |
|----------|--|----------|----------|----------------------------|----------|----------|--------------------------|----------|
| 17858 | Blade Shield for 39583 | 1 | AG255 | Pulley for 39583 | 10 | 32417 | Tie Rod Spacer for 39583 | 20 |
| 69750 | 350 Blade 57 Bore 280 Cover Blade 100CR6 W1.2067 for 39583 | 2 | 32409 | Bearing Spacer for 39583 | 11 | 32418 | Thumb Screw for 39583 | 21 |
| 32401 | Aluminum Plate for 39583 | 3 | AG256 | Bearing 6004 2RS for 39583 | 12 | 32419 | Washer for 39583 | 22 |
| 32402 | Bottom Cover for 39583 | 4 | 32411 | Clip for 39583 | 14 | 32420 | Plate Stop for 39583 | 23 |
| 32403 | Foot for 39583 | 5 | 32412 | Clip for 39583 | 15 | 32421 | Support Rail for 39583 | 24 |
| AG253 | Knob All. Zigr Blade Cover for 39583 | 6 | 32413 | Set Screw for 39583 | 16 | 32422 | Washer 8 for 39583 | 25 |
| 32405 | Washer 4 for 39583 | 7 | 32414 | Set Screw 6x8 TC for 39583 | 17 | 32423 | Screw TE 8x20 for 39583 | 26 |
| 32406 | Set Screw 5x8 TP for 39583 | 8 | 32415 | Set Screw PVC for 39583 | 18 | 32424 | Tapping Screw for 39583 | 27 |
| AG254 | Spindle Pin for 39583 | 9 | 32194 | Tie Rod for 39583 | 19 | | | |

Product Grip

| Item No. | Description | Position | Item No. | Description | Position | Item No. | Description | Position |
|----------|----------------------------------|----------|----------|---------------------------------------|----------|----------|----------------------------|----------|
| 32425 | Support for Pusher Arm for 39583 | 1 | 32437 | Spring 9x15 for 39583 | 13 | 32449 | Washer 4x25 for 39583 | 25 |
| 32426 | Washer 8 for 39583 | 2 | AG258 | Bead for 39583 | 14 | AG261 | Bearing 608 ZZ for 39583 | 26 |
| 32427 | Screw TE 8x20 for 39583 | 3 | 32439 | Presser Brake for 39583 | 15 | 32451 | Bearing Spindle for 39583 | 27 |
| 32428 | Set Screw 5x20 for 39583 | 4 | AG259 | Plexiglass Paradite for 39583 | 16 | 32452 | Pusher Arm for 39583 | 28 |
| 32429 | Set Screw 5x16 for 39583 | 5 | 32441 | Meat Grip Handle for 39583 | 17 | 32453 | PVC Washer 15x25 for 39583 | 29 |
| 32430 | Set Screw 6x8 TC for 39583 | 6 | 32442 | Screw TPSV 4x10 for 39583 | 18 | 32454 | Presser Spacer for 39583 | 30 |
| 32431 | Rod Brake for 39583 | 7 | 32443 | Screw TPSV 45x12 for 39583 | 19 | 32455 | Presser Plate for 39583 | 31 |
| 32432 | Set Screw 6x19 for 39583 | 8 | 32444 | Presser Handle Bracket for 39583 | 20 | 32456 | Set Screw 6x6 TC for 39583 | 32 |
| 32433 | Spring 3.5x19 for 39583 | 9 | AG260 | Astina C/Seiger SBL BR PRES for 39583 | 21 | AG262 | Meat Presser Rod for 39583 | 33 |
| 32434 | Spring 13.5x10 for 39583 | 10 | 32446 | Screw Chrome for 39583 | 22 | 32458 | Hex Pin 8x31 for 39583 | 34 |
| 32435 | Iron Plate for 39583 | 11 | 32447 | Washer 8 for 39583 | 23 | 32459 | Locking Nut for 39583 | 35 |
| AG257 | Brake Pin for 39583 | 12 | 32448 | Screw TPSV 4x10 for 39583 | 24 | AG263 | Complete Arm for 39583 | |

Blade Guard

| Item No. | Description | Position | Item No. | Description | Position | Item No. | Description | Position |
|----------|--------------------------------|----------|----------|---------------------------------|----------|----------|----------------------------|----------|
| 32461 | Nut 5 for 39583 | 1 | 32465 | Safety Ring Extension for 39583 | 5 | AG267 | Parafette for 39583 | 9 |
| 32462 | Washer 5 for 39583 | 2 | AG265 | Ring Support for 39583 | 6 | 32470 | Thumb Screw 5 MA for 39583 | 10 |
| 32463 | Set Screw 54x30 5x25 for 39583 | 3 | AG266 | Ring Support for 39583 | 7 | 32471 | Acorn Cap for 39583 | 11 |
| AG264 | Ring for 39583 | 4 | 32468 | Set Screw 6x12 for 39583 | 8 | | | |

Parts Breakdown

Model MS-IT-0350 39583

Electrical Components

| Item No. | Description | Position | Item No. | Description | Position | Item No. | Description | Position |
|----------|-----------------------------------|------------|----------|-------------------------------|----------|----------|-------------------------------|----------|
| AG268 | Capacitor 300/8 350/6.3 for 39583 | 1 | 32479 | Wing Nut for 39583 | 12 | 32486 | Screw TC 4x10 for 39583 | 20 |
| 32473 | Capacitor Bracket for 39583 | 2 | 32480 | Washer 6 A Wide for 39583 | 13 | 32487 | Terminal Block for 39583 | 21 |
| 32474 | Washer 5 for 39583 | 3 | 32481 | Motor Bracket for 39583 | 14 | 32488 | Tapping Screw for 39583 | 22 |
| 32475 | Screw 5x10 T C for 39583 | 4 | 32482 | Adjustment Rod for 39583 | 15 | 32489 | Stop Plate for 39583 | 23 |
| 32476 | Switch - On / Off for 39583 | 5 - 7 | 32483 | Motor Support Shaft for 39583 | 17 | AG272 | Screw TE for 39583 | 24 |
| AG269 | Ventilated Motor for 39583 | 9 - 11, 16 | AG271 | Motor Hinge for 39583 | 18 | 17855 | Belt 350 TB2-598x12 for 39583 | 25 |
| AG270 | Cord for 39583 | 11 | 32485 | Set Screw 5x8 T C for 39583 | 19 | | | |

Sharpening Assembly

| Item No. | Description | Position | Item No. | Description | Position | Item No. | Description | Position |
|----------|-------------------------------|----------|----------|---------------------------------|----------|----------|------------------------------------|----------|
| AG273 | Pipette for 39583 | 1 | 32500 | Sharpener Push Button for 39583 | 11 | 32510 | Screw TE 8x20 for 39583 | 21 |
| 32491 | Screw TPSV 6x12 for 39583 | 2 | 32501 | Spring for 39583 | 12 | 32511 | Washer 8 for 39583 | 22 |
| 32492 | Shaft for Sharpener for 39583 | 3 | 32502 | Screw TC for 39583 | 13 | AG275 | Canopy for 39583 | 23 |
| 32493 | Set Screw 5x40 for 39583 | 4 | 32503 | Washer 3 for 39583 | 14 | 32513 | Sharpener Cover Knob for 39583 | 24 |
| 32494 | Set Screw 5x30 for 39583 | 5 | 32504 | Sharpener Pin for 39583 | 15 | 32514 | Screw TC 6x12 for 39583 | 25 |
| 32495 | Nut 6 for 39583 | 6 | 32505 | Sharpener Pin for 39583 | 16 | 32515 | Set Screw 6x8 TC for 39583 | 26 |
| 32496 | Sharpener Screw for 39583 | 7 | AG274 | Sharpening Body for 39583 | 17 | 18016 | Omcan G Stone 50x08x06 for 39583 | 27 |
| 32497 | Ball Bearing for 39583 | 8 | 32507 | Screw TC 4x20 for 39583 | 18 | 33545 | 45x13x6 Sharpening Stone for 39583 | 28 |
| 32498 | Washer 6 for 39583 | 9 | 32508 | Washer 4 for 39583 | 19 | | | |
| 32499 | Nut 6 for 39583 | 10 | 32509 | Sharpener Tie Rod for 39583 | 20 | | | |

Product Holder Assembly

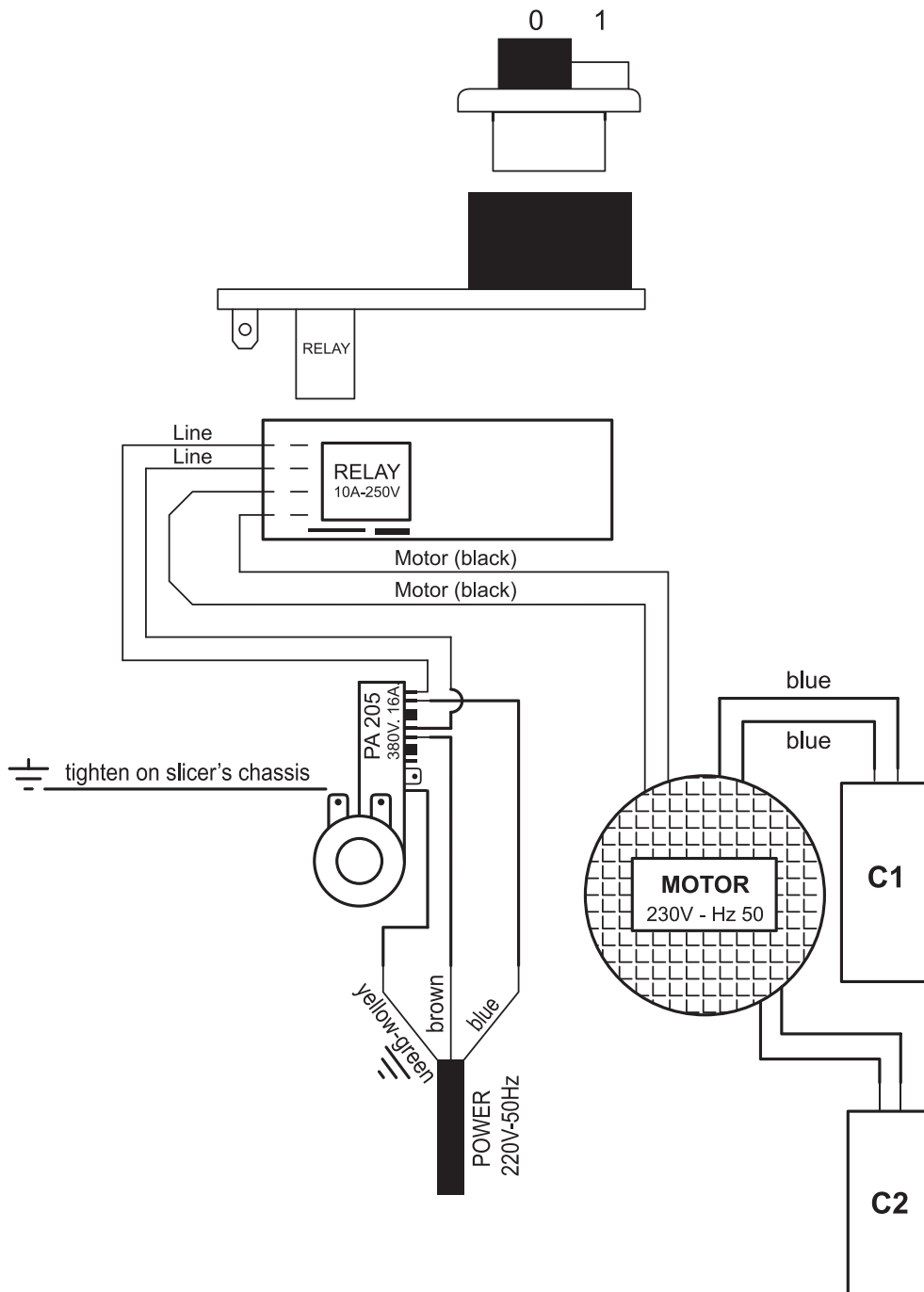
| Item No. | Description | Position | Item No. | Description | Position | Item No. | Description | Position |
|----------|------------------------------------|----------|----------|-----------------------------|----------|----------|-----------------------------|----------|
| 32517 | Screw TE 8x35 for 39583 | 1 | 32528 | Washer 8 for 39583 | 12 | 32538 | Set Screw 6x8 TC for 39583 | 22 |
| 32518 | Washer 8 for 39583 | 2 | 32529 | Stud 5 MA for 39583 | 13 | AG281 | All Outside Block for 39583 | 23 |
| 32520 | Carriage Plate Support H for 39583 | 4 | AG278 | Small Tray Plate for 39583 | 14 | AG282 | All Inside Block for 39583 | 24 |
| 32521 | Nut for 39583 | 5 | 32531 | Washer 6x18 for 39583 | 15 | 32541 | Set Screw 6x8 TC for 39583 | 25 |
| AG276 | Washer 6x18 for 39583 | 6 | 32532 | Nut 6 for 39583 | 16 | 32542 | Rubber Washer for 39583 | 26 |
| 32523 | Carriage Safety Guard for 39583 | 7 | 32533 | Meat Grip Handle for 39583 | 17 | AG283 | Tube x Block TC for 39583 | 27 |
| 32524 | Stud 6x50 for 39583 | 8 | AG279 | Extension Leg All for 39583 | 18 | 32544 | Bracket for 39583 | 28 |
| 32525 | Spacer for 39583 | 9 | 32535 | Wavy Washer for 39583 | 19 | 32545 | Stud PVC for 39583 | 29 |
| AG277 | Large Tray Plate for 39583 | 10 | 32536 | Stud 12 MA for 39583 | 20 | 32546 | Presser Rod for 39583 | 30 |
| 32527 | Screw TE 8x20 for 39583 | 11 | AG280 | Meat Press for 39583 | 21 | | | |

Electrical Schematics

Model MS-IT-0300-CE 46162

Model MS-IT-0330-CE 46163

Model MS-IT-0350 39583





Warranty Registration

Thank you for purchasing an Omcan product. To register your warranty for this product, complete the information below, tear off the card at the perforation and then send to the address specified below. You can also register online by visiting:

Merci d'avoir acheté un produit Omcan. Pour enregistrer votre garantie pour ce produit, complétez les informations ci-dessous, détachez la carte au niveau de la perforation, puis l'envoyer à l'adresse spécifiée ci-dessous. Vous pouvez également vous inscrire en ligne en visitant:

Gracias por comprar un producto Omcan usted. Para registrar su garantía para este producto, complete la información a continuación, cortar la tarjeta en la perforación y luego enviarlo a la dirección indicada a continuación. También puede registrarse en línea en:

<https://omcan.com/warranty-registration/>

For mailing in Canada

Pour postale au Canada

Por correo en Canadá

OMCAN

PRODUCT WARRANTY REGISTRATION

3115 Pepper Mill Court,

Mississauga, Ontario

Canada, L5L 4X5

For mailing in the US

Pour diffusion aux États-Unis

Por correo en los EE.UU.

OMCAN

PRODUCT WARRANTY REGISTRATION

4450 Witmer Industrial Estates, Unit 4,

Niagara Falls, New York

USA, 14305

or email to: service@omcan.com



Purchaser's Information

Name: _____

Address: _____

City: _____ Province or State: _____ Postal or Zip: _____

Country: _____

Dealer from which Purchased: _____

Dealer City: _____ Dealer Province or State: _____

Invoice: _____

Model Name: _____ Model Number: _____

Machine Description: _____

Date of Purchase (MM/DD/YYYY): _____

Would you like to extend the warranty? Yes No

Company Name: _____

Telephone: _____

Email Address: _____

Type of Company:

Restaurant Bakery Deli

Butcher Supermarket Caterer

Institution (specify): _____

Other (specify): _____

Serial Number: _____

Date of Installation (MM/DD/YYYY): _____

Thank you for choosing Omcan | Merci d'avoir choisi Omcan | Gracias por elegir Omcan



Since 1951 Omcan has grown to become a leading distributor of equipment and supplies to the North American food service industry. Our success over these many years can be attributed to our commitment to strengthen and develop new and existing relationships with our valued customers and manufacturers. Today with partners in North America, Europe, Asia and South America, we continually work to improve and grow the company. We strive to offer customers exceptional value through our qualified local sales and service representatives who provide convenient access to over 5,000 globally sourced products.

Depuis 1951 Omcan a grandi pour devenir un des “leaders” de la distribution des équipements et matériel pour l’industrie des services alimentaires en Amérique du Nord. Notre succès au cours de ces nombreuses années peut être attribué à notre engagement à renforcer et à développer de nouvelles et existantes relations avec nos clients et les fabricants de valeur. Aujourd’hui avec des partenaires en Amérique du Nord, Europe, Asie et Amérique du Sud, nous travaillons continuellement à améliorer et développer l’entreprise. Nous nous efforçons d’offrir à nos clients une valeur exceptionnelle grâce à nos ventes locales qualifiées et des représentants de service qui offrent un accès facile à plus de 5000 produits provenant du monde entier.

Desde 1951 Omcan ha crecido hasta convertirse en un líder en la distribución de equipos y suministros de alimentos en América del Norte industria de servicios. Nuestro éxito en estos años se puede atribuir a nuestro compromiso de fortalecer y desarrollar nuevas relaciones existentes con nuestros valiosos clientes y fabricantes. Hoy con socios de América del Norte, Europa, Asia y América del Sur, que trabajan continuamente para mejorar y crecer la empresa. Nos esforzamos por ofrecer a nuestros clientes valor excepcional a través de nuestro local de ventas y representantes de los servicios que proporcionan un fácil acceso a más de 5,000 productos con origen a nivel mundial.

