



Gear-Driven Slicer
Model MS-IT-0330-N
Item 39477
Instruction Manual



Revised - 06/26/2017



Toll Free: 1-800-465-0234
Fax: 905-607-0234
Email: service@omcan.com
www.omcan.com

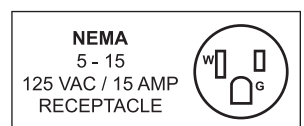


Table of Contents

Model MS-IT-0330-N

Section	Page
General Information -----	3 - 4
Safety and Warranty -----	4 - 5
Technical Specifications -----	6
Installation -----	6 - 7
Operation -----	7 - 8
Maintenance -----	8 - 11
Troubleshooting -----	11 - 12
Parts Breakdown -----	12 - 24
Electrical Schematics -----	25
Notes -----	26
Warranty Registration -----	27



General Information

Omcan Manufacturing and Distributing Company Inc., Food Machinery of America, Inc. dba Omcan and Omcan Inc. are not responsible for any harm or injury caused due to any person's improper or negligent use of this equipment. The product shall only be operated by someone over the age of 18, of sound mind, and not under the influence of any drugs or alcohol, who has been trained in the correct operation of this machine, and is wearing authorized, proper safety clothing. Any modification to the machine voids any warranty, and may cause harm to individuals using the machine or in the vicinity of the machine while in operation.

CHECK PACKAGE UPON ARRIVAL

Upon receipt of an Omcan shipment please inspect for external damage. If no damage is evident on the external packaging, open carton to ensure all ordered items are within the box, and there is no concealed damage to the machine. If the package has suffered rough handling, bumps or damage (visible or concealed), please note it on the bill of lading before accepting the delivery and contact Omcan within 24 hours, so we may initiate a claim with the carrier. A detailed report on the extent of the damage caused to the machine must be filled out within three days, from the delivery date shown in the shipping documents. Omcan has no recourse for damaged products that were shipped collect or third party.

Before operating any equipment, always read and familiarize yourself with all operation and safety instructions.

Omcan would like to thank you for purchasing this machine. It's of the utmost importance to save these instructions for future reference. Also save the original box and packaging for shipping the equipment if servicing or returning of the machine is required.

Omcan Fabrication et distribution Compañie Limité et Food Machinery d'Amerique, dba Omcan et Omcan Inc. ne sont pas responsables de tout dommage ou blessure causé du fait que toute personne ait utilisé cet équipement de façon irrégulière. Le produit ne doit être exploité que par quelqu'un de plus de 18 ans, saine d'esprit, et pas sous l'influence d'une drogue ou d'acohol, qui a été formé pour utiliser cette machine correctement, et est vêtu de vêtements de sécurité approprié. Toute modification de la machine annule toute garantie, et peut causer un préjudice à des personnes utilisant la machine ou des personnes à proximité de la machine pendant son fonctionnement.

VÉRIFIEZ LE COLIS DÈS RÉCEPTION

Dès réception d'une expédition d'Omcan veuillez inspecter pour dommages externes. Si aucun dommage n'est visible sur l'emballage externe, ouvrez le carton afin de s'assurer que tous les éléments commandés sont dans la boîte, et il n'y a aucun dommage dissimulé à la machine. Si le colis n'a subi aucune mauvaises manipulations, de bosses ou de dommages (visible ou cachée), notez-le sur le bond de livraison avant d'accepter la livraison et contactez Omcan dans les 24 heures qui suivent, pour que nous puissions engager une réclamation auprès du transporteur. Un rapport détaillé sur l'étendue des dommages causés à la machine doit être rempli dans un délai de trois jours, à compter de la date de livraison indiquée dans les documents d'expédition. Omcan n'a aucun droit de recours pour les produits endommagés qui ont été expédiées ou cueilli par un tiers transporteur.

General Information

Avant d'utiliser n'importe quel équipement, toujours lire et vous familiariser avec toutes les opérations et les consignes de sécurité.

Omcan voudrais vous remercier d'avoir choisi cette machine. Il est primordial de conserver ces instructions pour une référence ultérieure. Également conservez la boîte originale et l'emballage pour l'expédition de l'équipement si l'entretien ou le retour de la machine est nécessaire.

Omcan Empresa De Fabricacion Y Distribucion Inc. Y Maquinaria De Alimentos De America, Inc. dba Omcan y Omcan Inc. no son responsables de ningun daño o perjuicio causado por cualquier persona inadecuada o el uso descuidado de este equipo. El producto solo podra ser operado por una persona mayor de 18 años, en su sano juicio y no bajo alguna influencia de droga o alcohol, y que este ha sido entrenado en el correcto funcionamiento de esta máquina, y ésta usando ropa apropiada y autorizada. Cualquier modificación a la máquina anula la garantía y puede causar daños a las personas usando la máquina mientras esta en el funcionamiento.

REVISE EL PAQUETE A SU LLEGADA

Tras la recepcion de un envio Omcan favor inspeccionar daños externos. Si no hay daños evidentes en el empaque exterior, Habra el carton para asegurarse que todos los articulos solicitados estén dentro de la caja y no encuentre daños ocultos en la máquina. Si el paquete ha sufrido un manejo de poco cuidado, golpes o daños (visible o oculto) por favor anote en la factura antes de aceptar la entrega y contacte Omcan dentro de las 24 horas, de modo que podamos iniciar una reclamación con la compañía. Un informe detallado sobre los daños causados a la máquina debe ser llenado en el plazo de tres días, desde la fecha de entrega que se muestra en los documentos de envío. Omcan no tiene ningun recurso por productos dañados que se enviaron a recoger por terceros.

Antes de utilizar cualquier equipo, siempre leer y familiarizarse con todas las instrucciones de operación y seguridad.

Omcan quisiera darles las gracias por la compra de esta máquina. Es de la máxima importancia para guardar estas instrucciones para referencias en el futuro. También guarde la caja original y el embalaje para envío del equipo si el mantenimiento o la devolución de la máquina es necesaria.

Safety and Warranty

MECHANICAL SAFETY DEVICES

The slicer is manufactured according to the EEC 2006/42 Machinery Directive.

The mechanical safety devices are the following:

- Product holder removable only with the slice thickness control on zero (slice thickness plate positioned to protect the blade). After removing the product holder the slice thickness plate is mechanically clamped.

Safety and Warranty

- Protection devices mounted on the product holder to prevent the operator from any accidental contact with the blade.
- Blade guard. This fixed ring protects that part of the blade which is not used for the cutting operation.
- A special mechanical safety device to sharpen the blade keeping the fingers of the operator away from the cutting edge of the blade.

ELECTRICAL SAFETY DEVICES

The electrical safety devices in accordance with the EN 60204 standards are the following:

- Start and stop push buttons.
- Control circuit provided with electric servo-control; in any case of blade clamping the machine must be restarted manually.
- Safety device to stop the rotation of the blade if the clamping handle of the blade guard is released.

WARNING

When the machine is not used:

- Make sure that it is off.
- Re-position the slice thickness control to zero.

Do not remove the labels placed on the machine and replace them if damaged.

1 YEAR PARTS AND LABOUR WARRANTY

Within the warranty period, contact Omcan Inc. at 1-800-465-0234 to schedule an Omcan authorized service technician to repair the equipment locally.

Unauthorized maintenance will void the warranty. Warranty covers electrical and part failures, not improper use.

Please see www.omcan.com/warranty.html for complete info.


WARNING:

The packaging components are classified as normal solid urban waste and can therefore be disposed of without difficulty.

In any case, for suitable recycling, we suggest disposing of the products separately (differentiated waste) according to the current norms.

DO NOT DISCARD ANY PACKAGING MATERIALS IN THE ENVIRONMENT!

Technical Specifications

Model	MS-IT-0330-N
Blade Size	13" / 330mm
Power	0.6 HP / 0.45 kW
Cheese Slicing	
Slicing Volume*	8 hours or more
Slicing Capacity	10.2" x 6.7" / 259 x 170mm 9.25" / 235mm(Dia.)
Cut Thickness	0 - 0.55" / 0 - 14mm
RPM	240
Voltage	120V / 60Hz / 1
Packaging Weight	163 lbs. / 74 kgs.
Packaging Dimensions	36.2" x 33.8" x 32.7" / 920 x 859 x 831mm
Item Number	39477

*Results may vary due to product consistency and temperature

Installation

The slicer must be mounted horizontally on a stable, robust and antiskid base adequate to support its weight. The suggested height of the working table is of about 800 mm. It must be checked that the product holder is not clamped and the product to be cut can be easily loaded.

WARNING: To prevent the risk of crushing hazard, locate the machine in a manner that allows a clear space between the moving table and any permanent structure.

PRELIMINARY CLEANING

Before connecting the plug clean off the protective oil from the machine.

WARNING

The working table must always be cleaned.

ELECTRICAL SUPPLY

The machine must be installed in the proximity of a mains socket. Check that the power supply voltage corresponds to that described on the information label and that it is connected to an adequate earth.

1. Connect the plug.
2. Check that the blade cover fastener handle is tight screwed.
3. Check that the blade sharpener is lowered and the protective cover is closed.

MANUAL FUNCTIONING

1. Press push button blade start.
2. See manual functioning.

Installation

3. Press pushbutton carriage start.

SLICER FUNCTIONING AND USE

The following products can be sliced: sausages, ham, cheese, bread. If large quantities of bread or cheese are usually cut it is advisable to mount a teflon coating.

WARNING

The following cannot be sliced:

- Not-eatable products.
- Foodstuffs with bones.
- Frozen products.

AUTOMATIC FUNCTIONING

Rotate the carriage release handle in a counterclockwise direction by 180°. With the automatic functioning it is possible to change the cut stroke length to adapt it to the dimensions of the product to be cut. Rotate the product holder stroke adjustment knob respectively in a clockwise or counterclockwise direction to lengthen or shorten the product holder stroke. Irrespective of the selected stroke, the product holder always stops in product load position (operator's side) by pressing the product holder stop push button. The machine is supplied with two self-contained motors: one for the blade and another for the product holder to better adjust its stroke. By separating the two functions a more precise cut can be obtained.

MANUAL FUNCTIONING

Rotate the product holder release handle in a clockwise direction by 180°.

Operation

HOW TO LOAD THE PRODUCT TO BE CUT

1. Check that the slicer is off and position the slice thickness control to zero.
2. Push the product holder towards the operator.
3. Lift and rotate the product pusher: the pusher can fall back, this is normal.
4. Place the product to be cut against the wall of the product holder and the slice thickness plate.
5. Position the product pusher on the product to be cut far from the slice thickness plate. The product is fed to the slice thickness plate by gravity making the cut easier.
6. Rotate the slice thickness control to the thickness desired.

AUTOMATIC FUNCTIONING

1. Rotate the carriage release handle in a counterclockwise direction by 180°.
2. Press push button start blade.
3. Press push button start the product holder.
4. To select the most suitable carriage stroke according to the dimensions of the product to be cut, rotate the

Operation

carriage stroke adjustment knob respectively in a clockwise or counterclockwise direction to lengthen or shorten the stroke.

DANGER

Do not touch the carriage or the product holder when the machine is working.

After completing the cutting operation, press push button stop the product holder. The blade remains in operation whereas the product holder is fed to the stroke end where it stops towards the operator ready to start a new cutting cycle.

By pressing push button stop the blade, the product holder stops in its working position.

MANUAL FUNCTIONING

1. Rotate the carriage release handle in a clockwise direction by 180°.
2. Press push button to start the blade.
3. With constant speed, according to the product to be sliced features, you can push the product holder tray to its end stroke in blade direction. You can then return in the operator position and repeat this operation.

After cutting the product, reposition the product holder towards the operator. By pressing push button stop blade the rotation of the blade stops. Re-position the slice thickness control to zero and unload the product.

Maintenance

BLADE SHARPENING

Whenever the cut is not satisfactory, sharpen the blade. The time interval between a sharpening and the following depends on the intensity of use of the slicer and on the kind of food you cut. Replace the blade when the diameter becomes 10 mm less than the nominal diameter. For the replacement, ask the assistant service closest to you.

WARNING

The replacement of the blade is dangerous operation. Should the sharpening quality be not satisfactory, replace the stones by contacting Omcan.

SHARPENING OPERATION

DANGER

The sharpening operation must be performed during the manual functioning.

For a correct sharpening of the blade follow these instructions:

1. Clean the blade removing any greasy residue.

Maintenance

2. Make sure that the machine is off.
3. Rotate the slice thickness control to zero to make sure that the blade is covered by the slice thickness plate.

IMPORTANT

During the following operations the blade must always be covered by the removable protection.

4. Lift the sharpener cover.
5. Slip off completely the sharpener and spin it 180 degrees.
6. Replace the sharpener device.
7. Push the push button blade start to start the machine.
8. Sharpening: Press the sharpening wheel for about 10-15 seconds.
Then press simultaneously also the grinding stone for two seconds.
Contemporaneously loosen the two grind stones.
The sharpening and honing take place then simultaneously.

ATTENTION: for a suitable effect please execute sharpening for 10-15“ approx.

9. After sharpening press the blade stop push button.
10. Lift and rotate 180 degrees the sharpener and reallocate it into its initial position. Loosen the handle rotating it clockwise to block the sharpener. Lower the sharpener cover.

SHARPENER DEVICE REMOVAL

To facilitate the cleaning of the sharpening grinder, remove the sharpener device pulling it upwards.

WARNING

Do not immerse in water or detergent the sharpening device.

CLEANING OF THE GRINDING WHEELS

To obtain an excellent sharpening the grinding wheel must always be clean. Remove dirt and grease with rubbing alcohol and the supplied special brush. Be sure to clean and sanitize the blade after sharpening.

MAINTENANCE

All cleaning and maintenance operations must only be carried out with the machine disconnected and isolated from the mains supply and the slice thickness control on zero.

CONTROL OF THE AIR GRATING

An air grating for the motors ventilation is placed in the lower side of the machine. Keep the section-holes free and clean them with a brush at regular intervals.

Maintenance

CHECK OF THE ELECTRIC CABLE

It is recommended to check the wear of the electric cable at regular intervals.

SPARE PARTS

In the event that replacement parts need to be fitted, request only original spare parts.

CLEANING

The machine must be cleaned once a day or more frequently if necessary. Clean all the parts using a cloth sprinkled with water and washing up liquid (do not use strong detergents) and a brush.

WARNING

Do not use water jet

DANGER

During the cleaning operations take great care: danger of accident.

COMPONENTS REMOVAL

PRODUCT HOLDER

1. Loose the product holder by rotating the product holder clamping handle in a counterclockwise direction.
2. Position to zero the slice thickness control to remove the product holder.
3. Push the product holder towards the operator until it clicks. The click will inform the operator that the product holder is clamped.
4. Lift the last slice device from the guide bar.
5. Lift the product holder from the carriage.

IMPORTANT

The slice thickness control is clamped on zero.

BLADE COVER

1. Rotate the slice deflector and keep it away from the blade.
2. Loose the blade cover fastener handle by rotating it in a counterclockwise direction.
3. Push on the handle in the direction indicated by the arrow to lift the blade cover from the blade.
4. Lift the blade cover.

ATTENTION

Once removed the blade cover, an interlocking device stops the rotation of the blade.

DANGER

During the cleaning operations of the blade, pay attention to an accidental contact with it.

5. Press a damp cloth on the front side of the blade and move slowly from the center towards the edge in the

Maintenance

direction of the arrow.

6. Follow these instructions to clean the back side of the blade.
7. With a cloth dry both sides of the blade following this procedure.
8. Insert a damp cloth between the blade and the protection ring. Pull it outwards and rotate it to clean the internal side of the protection ring.
9. After cleaning re-position the blade cover, insert the fastener and screw in a clockwise direction to clamp the blade cover. Lower the sharpener protective cover.

IMPORTANT

Leave all the parts to soak in warm water and washing-up liquid (do not use strong detergents) and clean them by using a brush or a cloth. Rinse them in warm water and dry them.

To assemble the machine follow the reverse procedure as described for disassembly.

GUIDES LUBRICATION

This operation must be performed after cleaning the slicer or whenever the sliding is difficult. Use food safe oil only.

LUBRICATION OF THE GUIDE BAR OF THE LAST SLICE DEVICE

1. Drop some food grade oil on the bar.
2. Let the last slice device slide on the guide bar.

LUBRICATION OF THE GUIDE BAR OF THE PRODUCT HOLDER CARRIAGE

1. Push the product holder towards the operator.
2. Pour the food grade oil into the special carriage bar lubricator.
3. Push the product holder to and from and repeat the operation. Re-position it towards the operator.

Troubleshooting

PROBLEM	CORRECTIVE ACTION
The machine vibrates, overheats and emits a foul smell.	Stop it immediately and check that the voltage corresponds to that described on the rating label.
The blade cannot be sharpened any longer. The sharpening is no regular.	Clean the grinding wheels of the sharpener and check the wear of the blade.
On pushing the start push button the machine does not start.	Check if power missing. Check the safety devices.
The carriage and the last slice device run with difficulty.	Lubricate the guide bars.

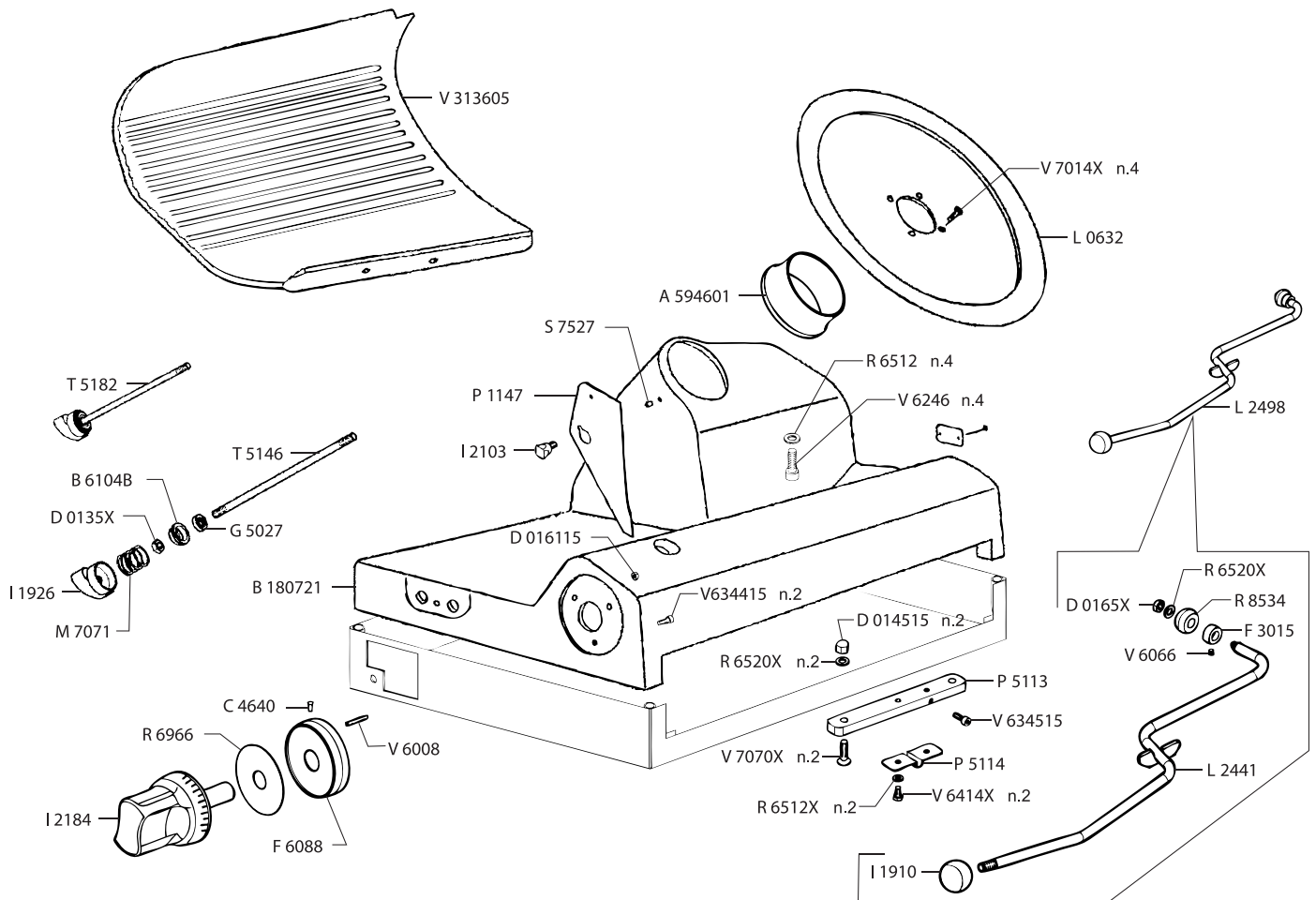
Troubleshooting

REFERENCE

Item Number	Model Number	Description	Manufacturer Model Number
39477	MS-IT-0330-N	Meat Slicer Gear Driven Automatic 13" / 330mm Blade 0.6 HP / 450W 120V/60/1 NSF cETLus	CXMATIC33

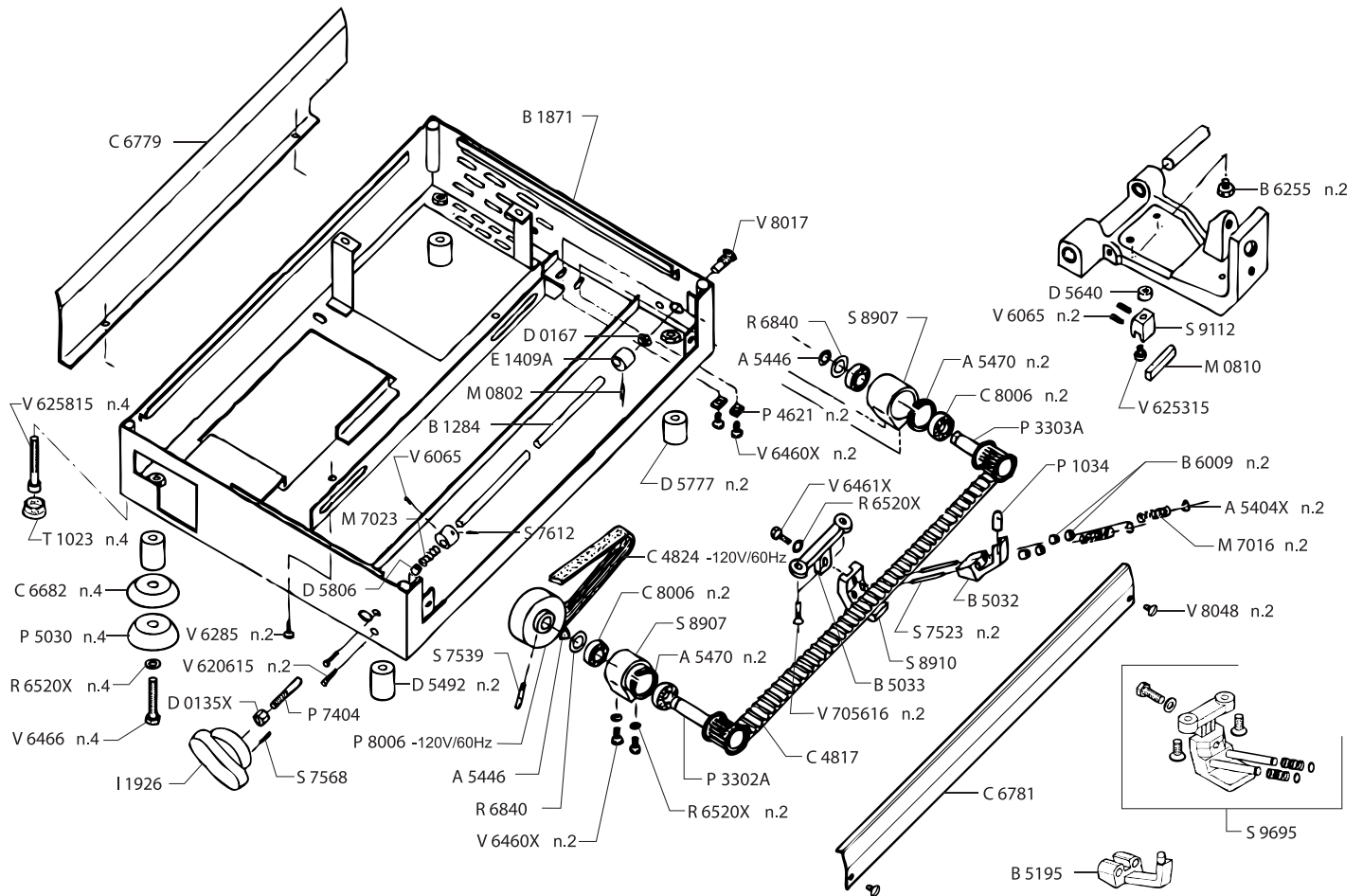
Parts Breakdown

Model MS-IT-0330-N 39477



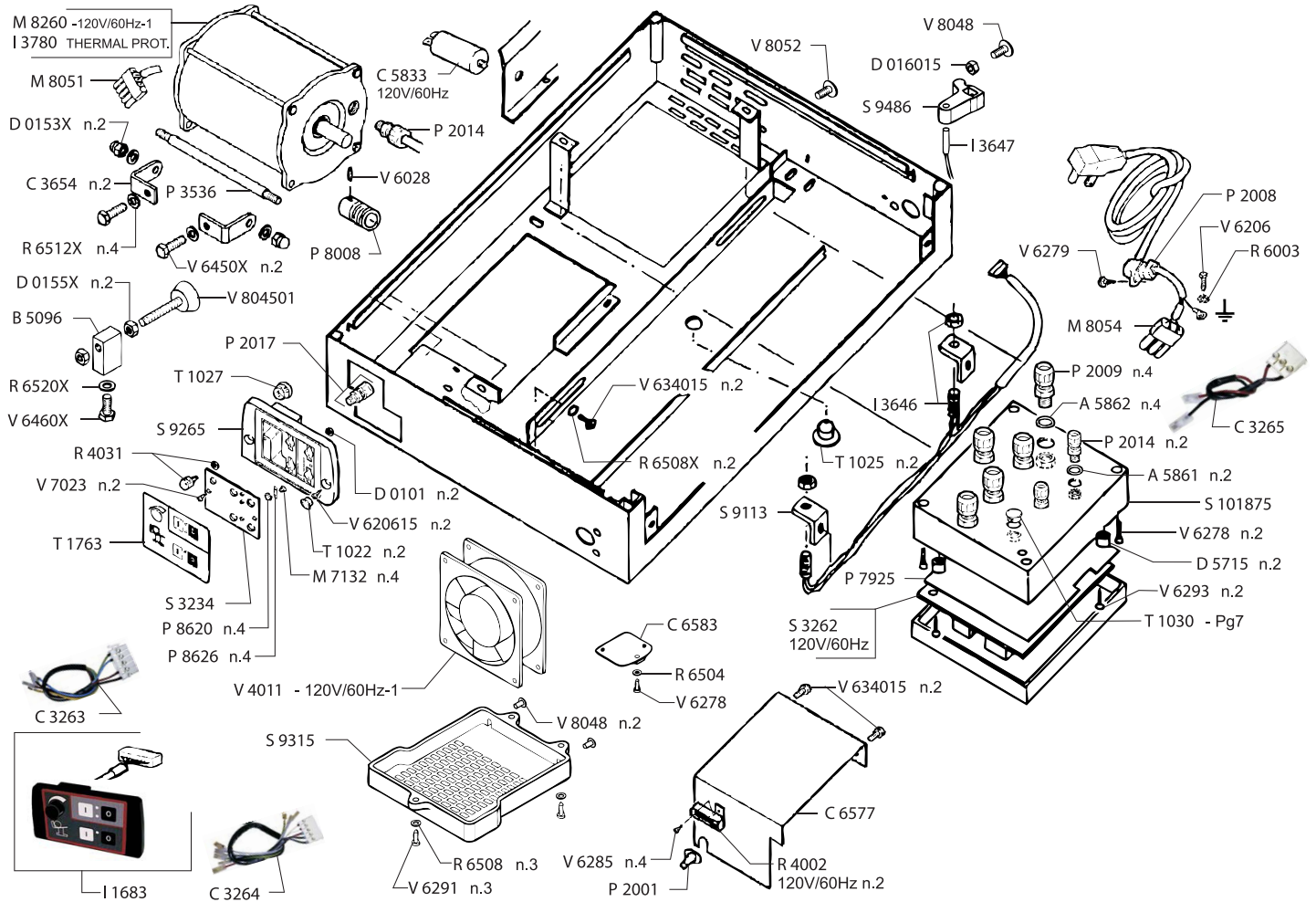
Parts Breakdown

Model MS-IT-0330-N 39477



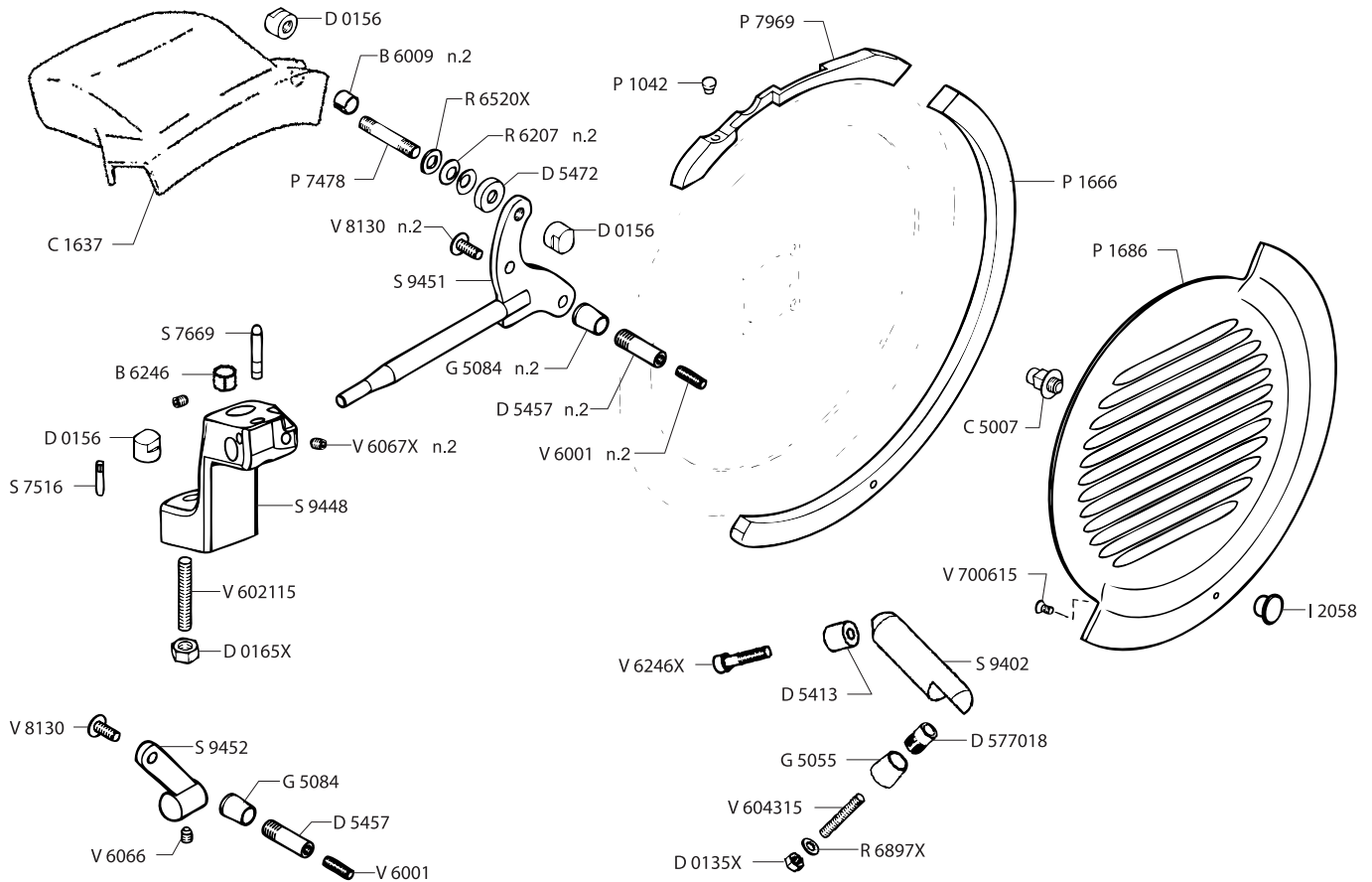
Parts Breakdown

Model MS-IT-0330-N 39477



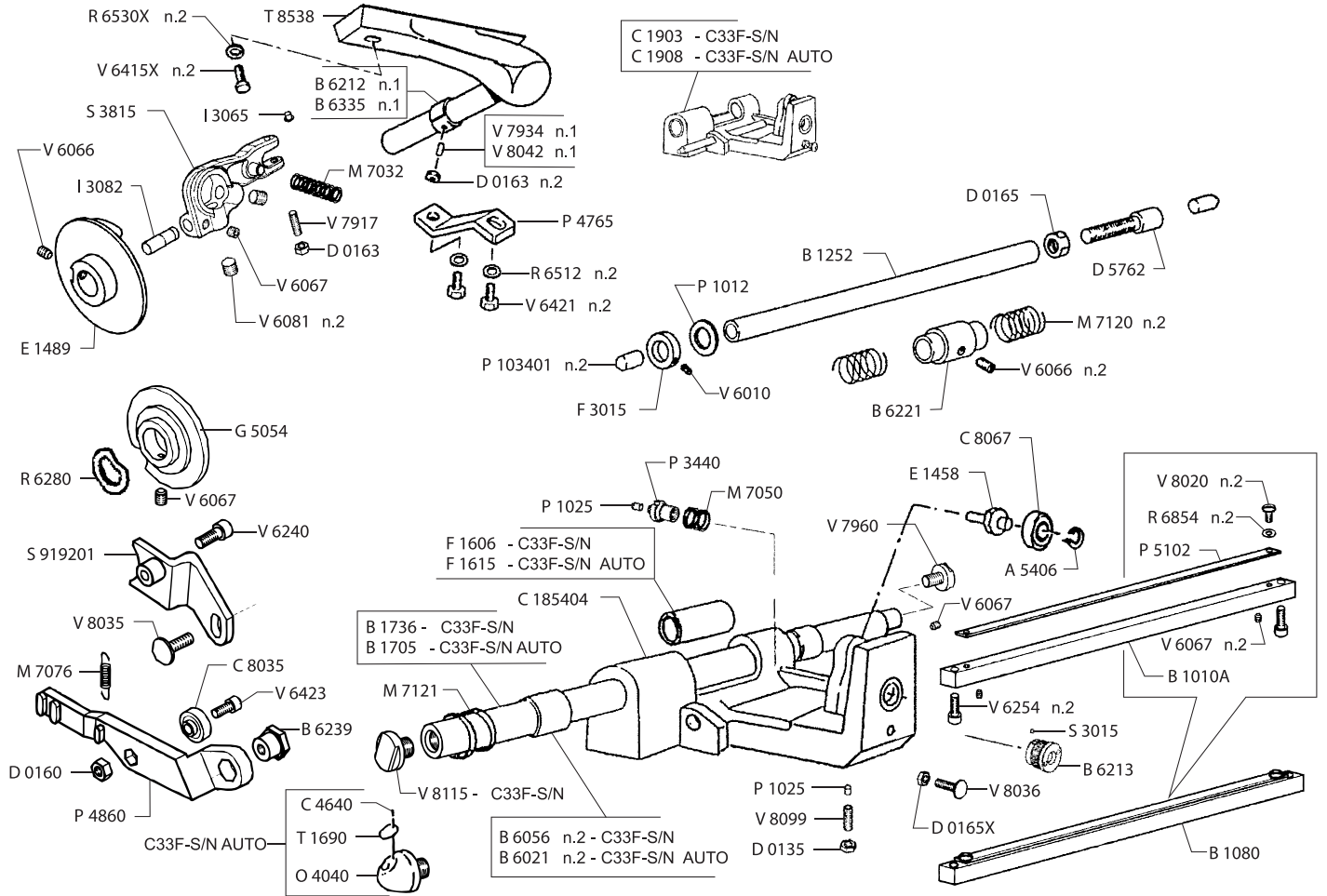
Parts Breakdown

Model MS-IT-0330-N 39477



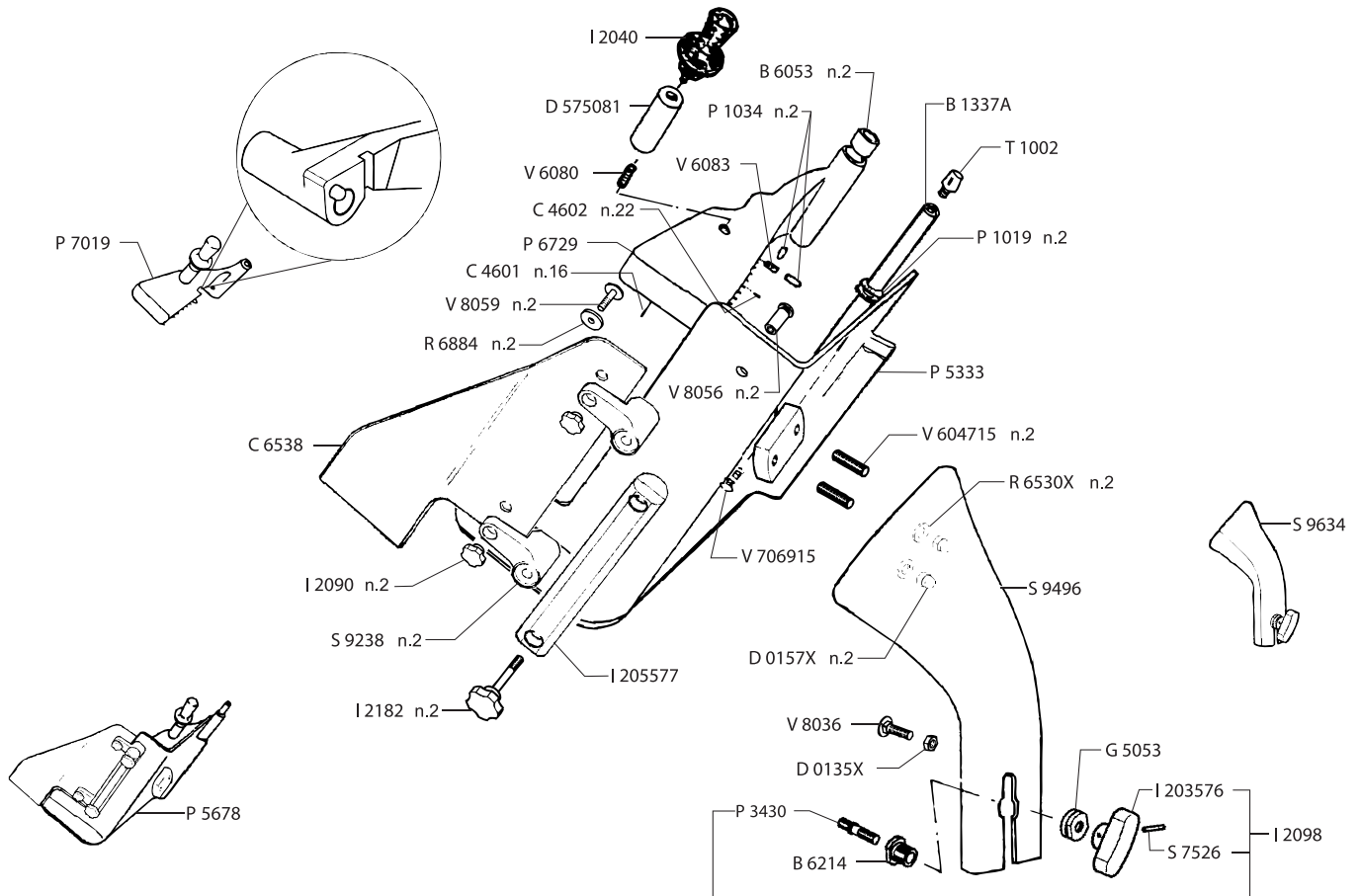
Parts Breakdown

Model MS-IT-0330-N 39477



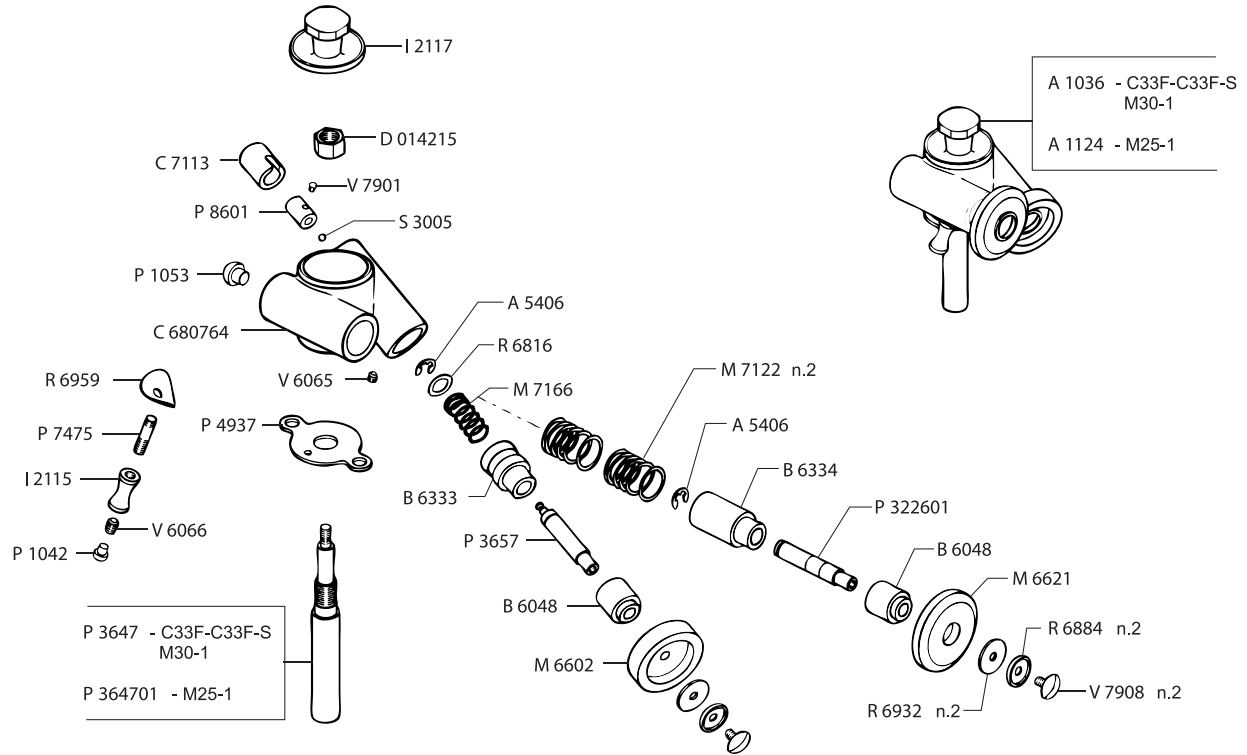
Parts Breakdown

Model MS-IT-0330-N 39477



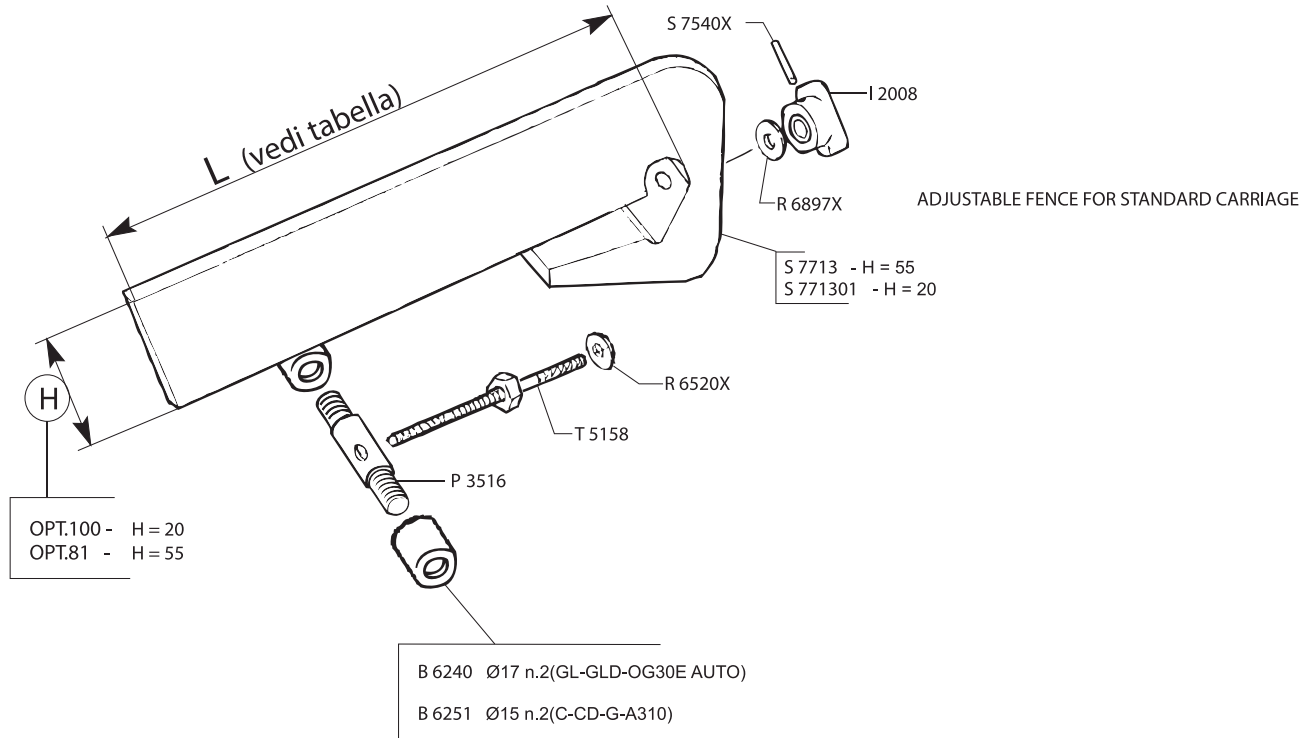
Parts Breakdown

Model MS-IT-0330-N 39477



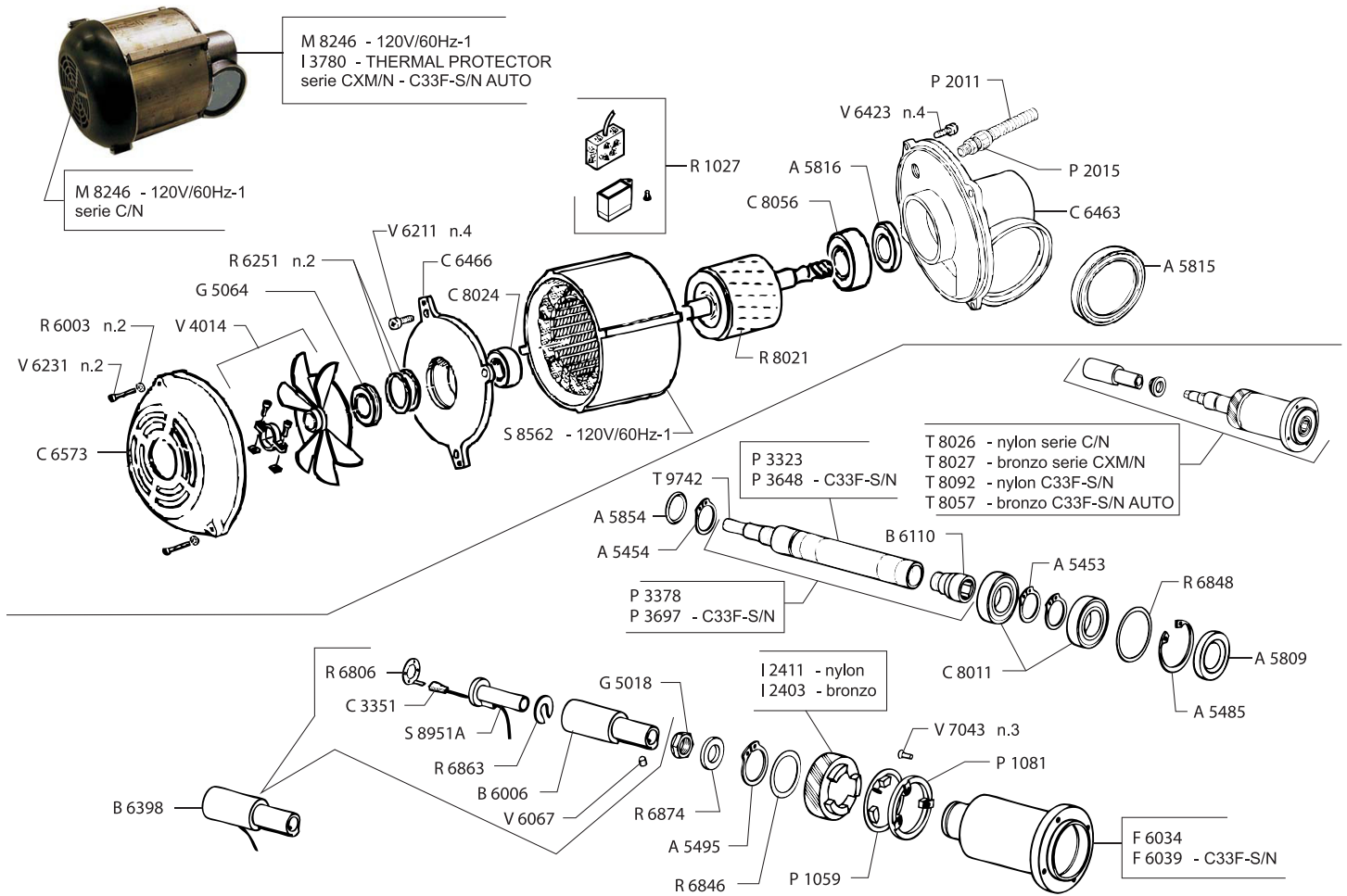
Parts Breakdown

Model MS-IT-0330-N 39477



Parts Breakdown

Model MS-IT-0330-N 39477



Parts Breakdown

Model MS-IT-0330-N 39477

Item No.	Description	Position	Item No.	Description	Position	Item No.	Description	Position
36535	Assembly Sharpener for CXMATIC33	A1036	36563	Carriage Bushing for CXMATIC33	B6213	36629	Bearing 2Z-6003 17x35x10 for CXMATIC33	C8006
36536	Ring EL.Benzing 6 Stainless Steel for CXMATIC33	A5404X	36564	Bushing for Carriage Support lg.23mm for CXMATIC33	B6214	17334	Bearing 2Z-6205 25x52x15 for CXMATIC33	C8011
16902	Ring EL.Benzing 8 for CXMATIC33	A5406	36566	Bushing to Hold Carriage Springs for CXMATIC33	B6221	16925	Bearing 2RS-6204 20x47x14 for CXMATIC33	C8024
17281	Ring EL.Seeger EXT.25 for CXMATIC33	A5453	36569	Fixing Lever Bushing for CXMATIC33	B6239	36630	Bearing 5x16x6.5 for CXMATIC33	C8035
77585	Ring EL.Seeger EST.25 SER.Heavy for CXMATIC33	A5454	36570	Bushing DU 16x18x20 for CXMATIC33	B6246	36631	Bearing 2RS-6205 25x52x15 for CXMATIC33	C8056
36541	Ring EL.Seeger INT.35 for CXMATIC33	A5470	36572	Locking Bushing for CXMATIC33	B6255	16926	Bearing 2RS-6000 (10x26x8) for CXMATIC33	C8067
77586	Ring EL.Seeger INT.52 for CXMATIC33	A5485	36574	Bushing for CXMATIC33	B6333	36591	Carriage Support for CXMATIC33	C185404
19612	Ring 33 for CXMATIC33	A5495	36575	Bushing for CXMATIC33	B6334	19637	Nut M3 for CXMATIC33	D0101
17283	Oil Seal 25x52x10 for CXMATIC33	A5809	36576	Bushing DU 28x32x25 for CXMATIC33	B6335	78293	Nut U5589 M8 for CXMATIC33	D0135
17285	Oil Seal 60x75x8 for CXMATIC33	A5815	36584	All Sharpener Cover for CXMATIC33	C1637	36637	Nut U5589 M8 Stainless Steel for CXMATIC33	D0135X
19493	Oil Seal 25x47x07 for CXMATIC33	A5816	36593	Assembled Carriage for CXMATIC33	C1903	36640	Domed Nut U5721 M6 Stainless Steel for CXMATIC33	D0153X
17288	O-Ring 3081 20.24x2.62 for CXMATIC33	A5854	62343	Cavo Ass. Motor Lama (120/60) for CXMATIC33	C3263	19642	Nut M8 for CXMATIC33	D0155X
77604	O-Ring 2056 14x1,78 for CXMATIC33	A5862	62344	Cavo Ass. Motor Carriage(120/60) for CXMATIC33	C3264	36642	Locking Nut for CXMATIC33	D0156
36544	Carriage Rod for CXMATIC33	B1010A	62345	Cavo Ass. Alim.Scheda(120/60) for CXMATIC33	C3265	19643	Nut M10 for CXMATIC33	D0157X
36549	Shock Absorber Rod 12x185 for CXMATIC33	B1252	62346	Bracket for CXMATIC33	C3654	36643	Nut U5588 M5 for CXMATIC33	D0160
19499	Carriage Rod for CXMATIC33	B1284	17316	Pin 8.5mm for CXMATIC33	C4601	19644	Nut M6 for CXMATIC33	D0163
19501	Meat Grip Rod A310 & C for CXMATIC33	B1337A	17317	Pin .11 for CXMATIC33	C4602	36647	Nut U5588 M8 for CXMATIC33	D0165
78292	Body Housing for CXMATIC33	B1871	36601	Rivet 1.9x5 for CXMATIC33	C4640	36648	Nut U5588 M8 for CXMATIC33	D0165X
36555	Belt Bracket for CXMATIC33	B5032	36604	Belt D.420 L100 for CXMATIC33	C4817	19645	Nut M10 for CXMATIC33	D0167
19510	Hangover Bracket for CXMATIC33	B5033	36605	Belt V.360x10 for CXMATIC33	C4824	36653	Spacer for CXMATIC33	D5413
62341	Block Pivot Cerniera for CXMATIC33	B5096	36607	Blade Cover Bolt Keeper 14x14 for CXMATIC33	C5007	36654	Spacer per Registro M10 p.1x33 for CXMATIC33	D5457
62342	Belt Bracket Assembly for CXMATIC33	B5195	62347	Capacitor 35MF 450V UL for CXMATIC33	C5833	36656	Motor Spacer for CXMATIC33	D5640
17298	Bushing Fastener C for CXMATIC33	B6006	78266	Motor for CXMATIC33	C6463	36658	El.Box Spacer for CXMATIC33	D5715
19618	Bushing 8x10x8 for CXMATIC33	B6009	36615	Back Motor Cover for CXMATIC33	C6466	36661	Carriage Shock Absorber Spacer for CXMATIC33	D5762
36557	Bushing DU 25x28x30 for CXMATIC33	B6021	36616	Transparent Cover for Carriage Plate for CXMATIC33	C6538	36670	Sharpener Support Spacer for CXMATIC33	D5777
16904	Bushing Sharpener for CXMATIC33	B6048	36617	Motor Fan Cover for CXMATIC33	C6573	36671	Unhook Spring Spacer for CXMATIC33	D5806
16905	Bushing DU 16x18x15 for CXMATIC33	B6053	36618	Motor Cover for CXMATIC33	C6577	77505	Stainless Steel Nut U5588 M12 for CXMATIC33	D014215
17304	Bushing for CXMATIC33	B6056	36623	Foot Cover for CXMATIC33	C6682	36644	U5588 M5 Stainless Steel Nut for CXMATIC33	D016015
19630	Bushing Fastener for CXMATIC33	B6104B	78291	Body Rear Cover for CXMATIC33	C6779	36659	Hand Grip-Knob Spacer for CXMATIC33	D575081
78265	Bushing Funnel for CXMATIC33	B6110	36624	Carriage Side Cover for CXMATIC33	C6781	36665	Locknut Spacer for CXMATIC33	D577018
18648	Bushing for CXMATIC33	B6212	36628	Switch Cover 16x20 for CXMATIC33	C7113	36675	Cam Carriage for CXMATIC33	E1409A

Parts Breakdown

Model MS-IT-0330-N 39477

Item No.	Description	Position	Item No.	Description	Position	Item No.	Description	Position
17345	Cam Bearing for CXMATIC33	E1458	36744	Spring 10.5x1x19 Stainless Steel for CXMATIC33	M7023	23649	Knife Shaft Model C for CXMATIC33	P3378
36680	Carriage Felt for CXMATIC33	F1606	19776	Spring 14x1.5x60 for CXMATIC33	M7032	36793	Pin Handle for CXMATIC33	P3430
62348	Feltro Carrello Bop Bianco (87x70x2) for CXMATIC33	F1615	19782	Spring 19.5x1.5x16.7 for CXMATIC33	M7050	36794	Carriage Plate Lock Pivot for CXMATIC33	P3440
36682	Unhook Friction Clasp 12x22x8 for CXMATIC33	F3015	19250	Spring 24.8x1.8x15 for CXMATIC33	M7071	36805	Pivot for Grinding Stone for CXMATIC33	P3657
17348	Flange Knife C for CXMATIC33	F6034	36746	Spring 7x0.8x23 Cam for CXMATIC33	M7076	77594	Assembly Driving Pivot T8093 for CXMATIC33	P3697
77591	Support Blade Flange for CXMATIC33	F6039	19248	Spring 15.6x20x2.2 for CXMATIC33	M7120	19831	Gauge Plate Flat Bar VS for CXMATIC33	P4621
17351	Locknut for CXMATIC33	G5018	36749	Carriage Bar Spring 25-28-1.5 for CXMATIC33	M7121	36830	Flat Bar C for CXMATIC33	P4765
36689	Stainless Steel Locknut M8 for CXMATIC33	G5027	36750	18.5x20.9x1.2 Bar Carriage Spring for CXMATIC33	M7122	36834	Index Casting for CXMATIC33	P4860
36691	Ring for Bushing for CXMATIC33	G5053	78283	Screw for CXMATIC33	M7132	17438	Foot for CXMATIC33	P5030
36692	Ring for Cam for CXMATIC33	G5054	36751	Spring for CXMATIC33	M7166	78235	End Grip for CXMATIC33	P6729
36695	Ring Support Cap for CXMATIC33	G5055	36754	Terminal Block AL17/1W for CXMATIC33	M8051	36850	Assembly End-Grip for CXMATIC33	P7019
36697	Logging Lock Nut for CXMATIC33	G5064	62353	Terminal Block 3P AL18-10 for CXMATIC33	M8054	36851	Stud Handle for CXMATIC33	P7404
36698	Index Ring M10 p.1 h.17 for CXMATIC33	G5084	20263	Motor 120V/60Hz-1 for CXMATIC33	M8246	36855	PBC Insulating Protection for CXMATIC33	P7925
62349	Assembly Switch Pad for CXMATIC33	I1683	62354	Motor 120x60 Carriage for CXMATIC33	M8260	36857	Protection Superior Lama for CXMATIC33	P7969
17354	Handle T210 for CXMATIC33	I1910	36759	Rubber Shock Absorber 12x19x2 for CXMATIC33	P1012	36858	Reduction Pulley for CXMATIC33	P8006
17356	Fastener Handle for CXMATIC33	I1926	17390	Rubber Shock Abs. 16x22x2.5 for CXMATIC33	P1019	36859	Motor Pulley for CXMATIC33	P8008
17363	End Grip Handle for CXMATIC33	I2040	36760	Pin Tray Shock-Absorber for CXMATIC33	P1025	17448	Sharpener Pusher for CXMATIC33	P8601
36714	Blade Cover Handling for CXMATIC33	I2058	17392	PL.Shock Absorb.8.5x20 for CXMATIC33	P1034	78282	Lock Washer for CXMATIC33	P8620
36717	Knob Assembly for CXMATIC33	I2098	19797	Nylon Shock 8.5x8 for CXMATIC33	P1042	78284	Bracket for CXMATIC33	P8626
23632	Screw for CXMATIC33	I2103	36762	Rubber Plug for CXMATIC33	P1053	36761	Shock Absorber for CXMATIC33	P103401
16936	Bronze Gear 328 DP56.44 Z29 M1.75 for CXMATIC33	I2403	16955	Shock Absorber for CXMATIC33	P1059	17419	Pin Truing for CXMATIC33	P322601
62350	Bushing Glide Dia 8x8 for CXMATIC33	I3065	17395	Shock Absorber for CXMATIC33	P1081	36873	Resistor 50W 22 OHM for CXMATIC33	R4002
62351	Bushing Glide Pin Dia 8x38 for CXMATIC33	I3082	36773	Ring Guard for CXMATIC33	P1666	19656	Potentiometer for CXMATIC33	R4031
17368	Hall Effect Switch 2P for CXMATIC33	I3646	36774	Strain Relief for CXMATIC33	P2001	19657	Washer 4 for CXMATIC33	R6003
17369	Switch 4x20 for CXMATIC33	I3647	17415	Strain Relief for CXMATIC33	P2008	36877	Washer 8.2x16x0.9 for CXMATIC33	R6207
62352	Thermal Protector F11-120C for CXMATIC33	I3780	77617	Strain Relief for CXMATIC33	P2009	78258	Washer 30.5x46.5x0.6 for CXMATIC33	R6251
37808	Handle Carriage for CXMATIC33	I203576	36778	Wire-Press for CXMATIC33	P2014	19666	Washer for CXMATIC33	R6280
36732	Magnet 6x20 for CXMATIC33	M0802	36779	Core-Hitch+Nut for CXMATIC33	P2015	17456	Washer U6592 5 for CXMATIC33	R6508
36735	Magnet 10x12x48 for CXMATIC33	M0810	36780	Wire Pusher for CXMATIC33	P2017	36882	Washer U6592 5 Stainless Steel for CXMATIC33	R6508X
36737	Grinding Stone C for CXMATIC33	M6602	36786	Front Pulley Pin for CXMATIC33	P3302A	36883	Washer U6592 6 Stainless Steel for CXMATIC33	R6512X
36739	Honing-Finishing Stone for CXMATIC33	M6621	36787	Pin Rear Pulley for CXMATIC33	P3303A	36884	Washer U6592 8 Stainless Steel for CXMATIC33	R6520X
36743	Spring 9.9x0.7x7 Stainless Steel for CXMATIC33	M7016	78264	Shaft for CXMATIC33	P3323	36885	Washer U6592 10 Stainless Steel for CXMATIC33	R6530X



Parts Breakdown

Model MS-IT-0330-N 39477

Item No.	Description	Position	Item No.	Description	Position	Item No.	Description	Position
17458	Contact Washer for CXMATIC33	R6806	36960	Switch Bracket for CXMATIC33	S9113	19697	Screw M5x16 for CXMATIC33	V6211
36889	Washer 10.5x16x1 for CXMATIC33	R6816	36974	Carriage Plexi Support for CXMATIC33	S9238	19699	Screw M4x25 for CXMATIC33	V6231
17460	Washer 34.2x46x0.5 for CXMATIC33	R6846	78274	Control Panel Housing for CXMATIC33	S9265	19700	Screw M6x16 for CXMATIC33	V6240
77595	Washer 44,5x51,5x0,2 for CXMATIC33	R6848	78285	Fan Support for CXMATIC33	S9315	19702	Screw M6x25 for CXMATIC33	V6246
77540	Washer 6,2x14x0,6 for CXMATIC33	R6854	36976	Support for CXMATIC33	S9402	37039	Screw TCEI U5931 M6x25 INOX for CXMATIC33	V6246X
19675	Washer C for CXMATIC33	R6863	36977	Sharpener Support for CXMATIC33	S9448	37042	Screw TCEI U5931 M8x25 for CXMATIC33	V6254
36892	Washer 17x30x4 for CXMATIC33	R6874	36978	Support Bracket for CXMATIC33	S9451	19706	Screw for CXMATIC33	V6278
16972	Washer 5.5x19x2.5 for CXMATIC33	R6884	36901	Plastic Box-Housing for CXMATIC33	S101875	37048	Screw TCTC AUT.D7981 3.5x9.5 for CXMATIC33	V6279
36893	Stainless Steel Special Washer 8.5x24x2 for CXMATIC33	R6897X	19878	Rubber Cap for CXMATIC33	T1002	37050	Screw TC AUT.D7971 4.2x9 for CXMATIC33	V6285
36897	Special Washer 5.5x22x1.5 for CXMATIC33	R6932	36982	Heyco Cap SP-468 Diam.12 for CXMATIC33	T1022	37052	Screw TC AUT.U6951 4.2x16 for CXMATIC33	V6291
78261	Rotor (A3109 P2521) Stator H.50 for CXMATIC33	R8021	36983	Rubber Cap Diam. 13.5 for CXMATIC33	T1023	37053	Screw AUT. U6954 3.9x25 for CXMATIC33	V6293
19680	Ball 3 17 for CXMATIC33	S3005	78273	Rubber Cap Diam. 16 for CXMATIC33	T1027	37064	Screw TE U5739 M10x35 for CX-MATIC33	V6415X
17465	Ball 4.76 for CXMATIC33	S3015	78276	Switch Overlay for CXMATIC33	T1763	37066	Screw TE U5737 M6x15 for CXMATIC33	V6421
78281	Control Panel Housing Frame for CXMATIC33	S3234	44014	Knife Cover Tie Rod (Release Knob) for CXMATIC33	T5182	37067	Screw TE U5739 M5x20 for CXMATIC33	V6423
36905	120V/60HZ P.C.B. for CXMATIC33	S3262	16983	Knife Shaft Assembly for CXMATIC33	T8027	37071	Screw TE U5739 M6x10 Stainless Steel for CXMATIC33	V6450X
36908	Track C-CD for CXMATIC33	S3815	36997	Knife Shaft Assembly for CXMATIC33	T8092	37072	Screw TE U5739 M8x20 Stainless Steel for CXMATIC33	V6460X
36915	Pin Stainless Steel D.6x28 for CXMATIC33	S7516	36999	Riding Pin (Diam.28) for CXMATIC33	T8538	37073	Screw TE U5739 M8x25 Stainless Steel for CXMATIC33	V6461X
19682	Pin 8x70 for CXMATIC33	S7523	19911	Fan for CXMATIC33	V4011	37075	Screw TE U5739 M8x60 for CXMATIC33	V6466
36920	Pin 4x25 for CXMATIC33	S7526	37013	Motor Fan MEC80 148x16 for CX-MATIC33	V4014	17497	Screw TSP U6109 M5x15 Stainless Steel for CXMATIC33	V7014X
36921	Stainless Steel 4x7 Pin M.C for CXMATIC33	S7527	37014	STEI Screw 6x20 for CXMATIC33	V6001	78275	Screw TSPU6109 M3x6 for CXMATIC33	V7023
36922	Pin M.E.U6875 5x36 for CXMATIC33	S7539	37016	Screw STTC U6113 M4x25 for CXMATIC33	V6008	17498	Screw TSPEI U5933 M4x10 for CXMATIC33	V7043
36923	Stainless Steel Pin 3x25 for CXMATIC33	S7540X	37018	Screw STTC U6113 M6x6 for CX-MATIC33	V6010	37086	Stainless Steel Screw M 8x20 U5933 for CXMATIC33	V7070X
36927	Pin M.I.S1 D1471 6x20 for CXMATIC33	S7568	37020	Screw M5x8 U5923 for CXMATIC33	V6028	17502	Screw M3x5.5 for CXMATIC33	V7901
36930	Pin M.E.U6873 3x22 for CXMATIC33	S7612	37023	Screw STEI U5929 M5x5 for CXMATIC33	V6065	17503	Screw M5x13 for CXMATIC33	V7908
36931	Pin 8x50 for CXMATIC33	S7669	19691	Grub Screw M6x6 for CXMATIC33	V6066	19717	Screw M6x50 for CXMATIC33	V7917
45093	Assembly Product Fence - OPT.81 for CXMATIC33	S7790	19692	Screw M6x8 for CXMATIC33	V6067	19720	Screw M6 for CXMATIC33	V7934
19870	Stator 120/60 for CXMATIC33	S8562	37025	Screw STEI U5929 M6x8 for CXMATIC33	V6067X	19917	Screw BS for CXMATIC33	V7960
36945	Carriage Pulley Bracket for CXMATIC33	S8907	19695	Screw M10x30 for CXMATIC33	V6080	37100	Carriage Screw for CXMATIC33	V8017
36946	Bracket for CXMATIC33	S8910	37030	Screw M12x16 U5927 for CXMATIC33	V6081	16987	Special Screw M6x15 for CXMATIC33	V8020
78236	Bracket Washer C for CXMATIC33	S8951A	37031	Screw STEI U5929 M8x16 for CX-MATIC33	V6083	37102	Screw M6x20 for CXMATIC33	V8035
36959	Bracket Magnet for CXMATIC33	S9112	37033	Screw TC U6107 M4x8 for CXMATIC33	V6206	19920	Screw M8x30 for CXMATIC33	V8036

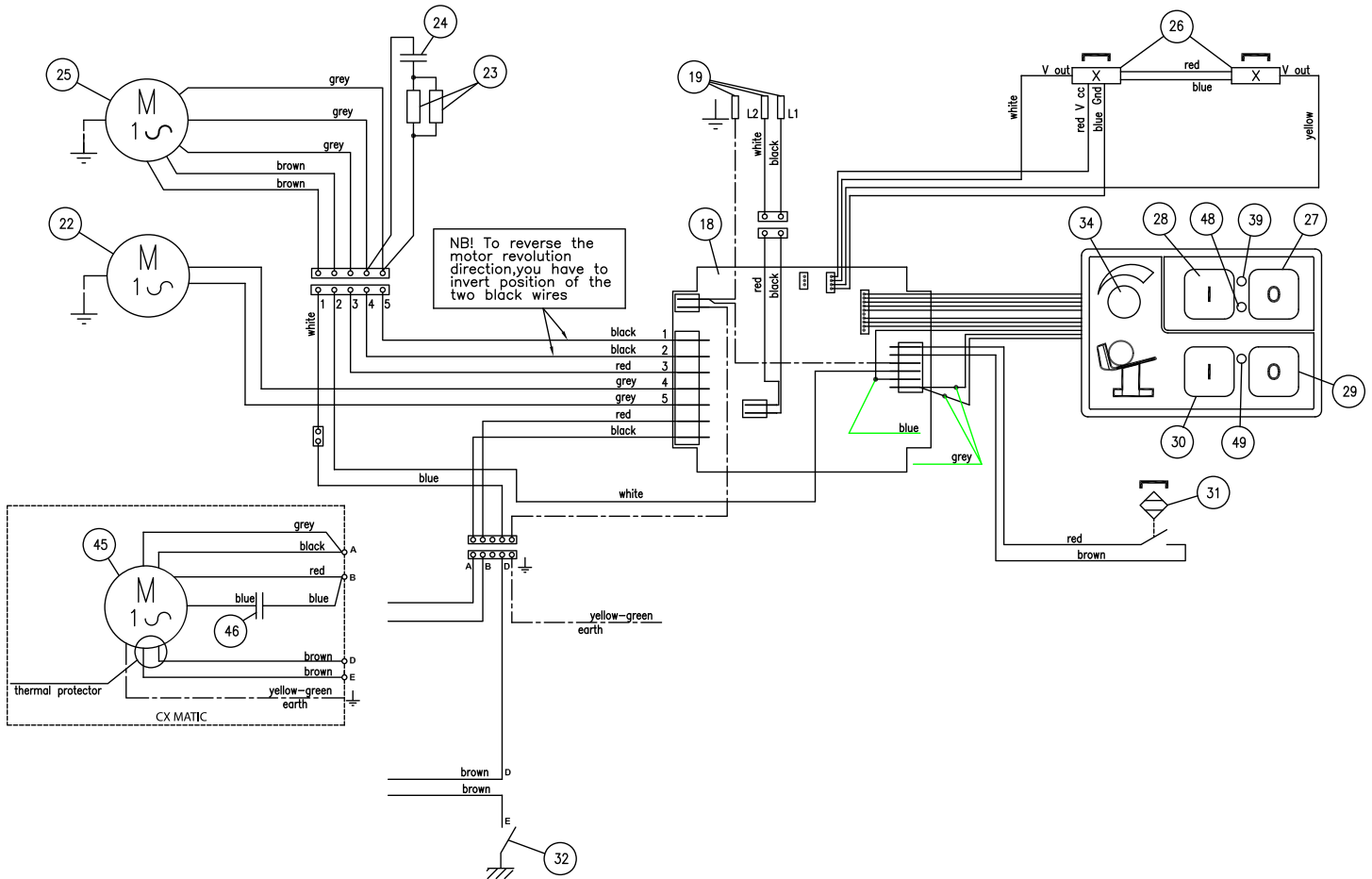
Parts Breakdown

Model MS-IT-0330-N 39477

Item No.	Description	Position	Item No.	Description	Position	Item No.	Description	Position
37104	Threaded Stud for CXMATIC33	V8042	37114	Stainless Steel Screw M6x25 for CXMATIC33	V8130	77630	Stainless Steel Screw TCEI U5931 M4x12 for CXMATIC33	V634415
37106	Stainless Steel Switch Screw M5x10 for CXMATIC33	V8048	26127	Stud C for CXMATIC33	V602115	37056	Stainless Steel Screw M6x12 U5931 for CXMATIC33	V634515
37107	Stainless Steel Screw M 6x30 for CXMATIC33	V8052	37034	Stainless Steel Screw M8x4 U5931 for CXMATIC33	V620615	37077	Screw TSP U6109 M4x6 INOX for CXMATIC33	V700615
37108	Special Fixed End Screw M6x17 for CXMATIC33	V8056	37041	Stainless Steel Screw M8x20 for CXMATIC33	V625315	37085	Screw 8x25 for CXMATIC33	V705616
19726	Screw M5x21 for CXMATIC33	V8059	37044	Stainless Steel Screw M8x60 U5931 for CXMATIC33	V625815			
37113	Screw for Carriage Index M8x25 for CXMATIC33	V8099	37055	Stainless Steel Screw M 5x8 U5931 for CXMATIC33	V634015			

Electrical Schematics

Model MS-IT-0330-N 39477



Position	Description	Position	Description	Position	Description
18	Printed Circuit Board	27	Blade Stop Push Button	39	LED Power Supply
19	Power Cord	28	Blade Start Push Button	45	Blade Motor
22	Fan	29	Carriage Stop Push Button	46	Capacitor 20uF
23	Resistance 50W	30	Carriage Start Push Button	48	LED Blade Start
24	Capacitor 35uF	31	Carriage Microswitch	49	LED Product Holder Start
25	Carriage Motor	32	Blade Cover Contact		
26	Hall Effect Switch	34	Carriage Stroke Adjustment		



Warranty Registration

Thank you for purchasing an Omcan product. To register your warranty for this product, complete the information below, tear off the card at the perforation and then send to the address specified below. You can also register online by visiting:

Merci d'avoir acheté un produit Omcan. Pour enregistrer votre garantie pour ce produit, complétez les informations ci-dessous, détachez la carte au niveau de la perforation, puis l'envoyer à l'adresse spécifiée ci-dessous. Vous pouvez également vous inscrire en ligne en visitant:

Gracias por comprar un producto Omcan usted. Para registrar su garantía para este producto, complete la información a continuación, cortar la tarjeta en la perforación y luego enviarlo a la dirección indicada a continuación. También puede registrarse en línea en:

www.omcan.com/warrantyregistration.html

For mailing in Canada

Pour postale au Canada

Por correo en Canadá

OMCAN

PRODUCT WARRANTY REGISTRATION

3115 Pepper Mill Court,

Mississauga, Ontario

Canada, L5L 4X5

For mailing in the US

Pour diffusion aux États-Unis

Por correo en los EE.UU.

OMCAN

PRODUCT WARRANTY REGISTRATION

4450 Witmer Industrial Estates, Unit 4,

Niagara Falls, New York

USA, 14305

or email to: service@omcan.com



Purchaser's Information

Name: _____

Address: _____

City: _____ Province or State: _____ Postal or Zip: _____

Country: _____

Dealer from which Purchased: _____

Dealer City: _____ Dealer Province or State: _____

Invoice: _____

Model Name: _____ Model Number: _____

Machine Description: _____

Date of Purchase (MM/DD/YYYY): _____

Would you like to extend the warranty? Yes No

Company Name: _____

Telephone: _____

Email Address: _____

Type of Company:

Restaurant Bakery Deli

Butcher Supermarket Caterer

Institution (*specify*): _____

Other (*specify*): _____

Serial Number: _____

Date of Installation (MM/DD/YYYY): _____

Thank you for choosing Omcan | Merci d'avoir choisi Omcan | Gracias por elegir Omcan



Since 1951 Omcan has grown to become a leading distributor of equipment and supplies to the North American food service industry. Our success over these many years can be attributed to our commitment to strengthen and develop new and existing relationships with our valued customers and manufacturers. Today with partners in North America, Europe, Asia and South America, we continually work to improve and grow the company. We strive to offer customers exceptional value through our qualified local sales and service representatives who provide convenient access to over 3,500 globally sourced products.

Depuis 1951 Omcan a grandi pour devenir un des “leaders” de la distribution des équipements et matériel pour l’industrie des services alimentaires en Amérique du Nord. Notre succès au cours de ces nombreuses années peut être attribué à notre engagement à renforcer et à développer de nouvelles et existantes relations avec nos clients et les fabricants de valeur. Aujourd’hui avec des partenaires en Amérique du Nord, Europe, Asie et Amérique du Sud, nous travaillons continuellement à améliorer et développer l’entreprise. Nous nous efforçons d’offrir à nos clients une valeur exceptionnelle grâce à nos ventes locales qualifiées et des représentants de service qui offrent un accès facile à plus de 3500 produits provenant du monde entier.

Desde 1951 Omcan ha crecido hasta convertirse en un líder en la distribución de equipos y suministros de alimentos en América del Norte industria de servicios. Nuestro éxito en estos años se puede atribuir a nuestro compromiso de fortalecer y desarrollar nuevas relaciones existentes con nuestros valiosos clientes y fabricantes. Hoy con socios de América del Norte, Europa, Asia y América del Sur, que trabajan continuamente para mejorar y crecer la empresa. Nos esforzamos por ofrecer a nuestros clientes valor excepcional a través de nuestro local de ventas y representantes de los servicios que proporcionan un fácil acceso a más de 3,500 productos con origen a nivel mundial.

