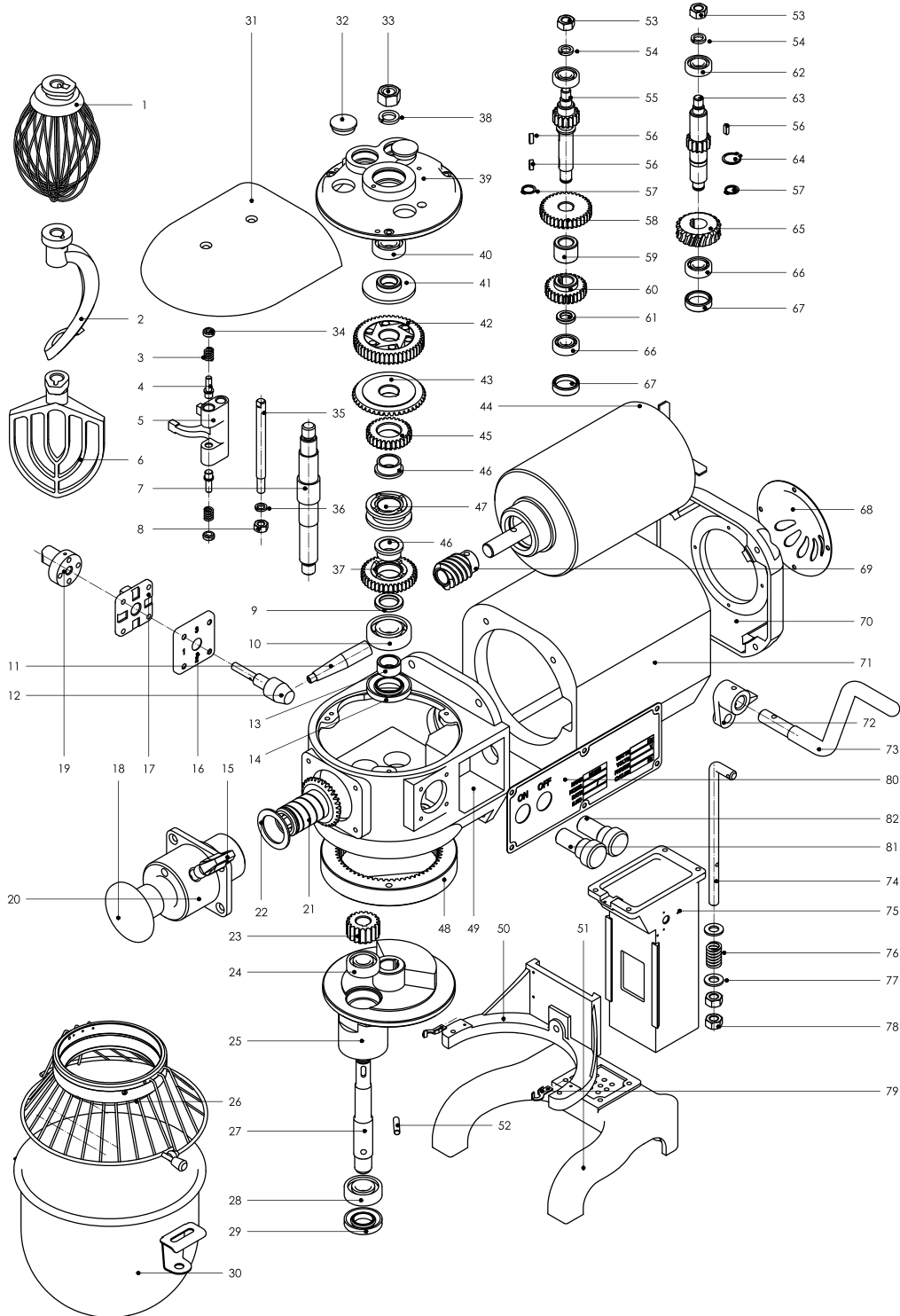


Parts Breakdown

Model MX-CN-0010-G 20467



Parts Breakdown

Model MX-CN-0010-G 20467

| Item No. | Description | Position | Item No. | Description | Position | Item No. | Description | Position |
|----------|--|----------|----------|--------------------------------|----------|----------|--|----------|
| 25061 | Wire Whip for 20467 | 1 | 25714 | Nut 14x1.5 for 20467 | 33 | 25124 | Ring for 20467 | 61 |
| 25062 | Hook for 20467 | 2 | 25095 | Declutch Shift Shaft for 20467 | 35 | 25125 | Bearing for 20467 | 62 |
| 25065 | Shifting Yoke for 20467 | 3-5, 34 | 25096 | Spring Washer for 20467 | 36 | 25126 | Shaft Worm Gear for 20467 | 63 |
| 25066 | Flat Beater for 20467 | 6 | 25097 | Gear for 20467 | 37 | 24915 | Circlips for Shaft for 20467 | 64 |
| 25067 | Gear (comes with Elastic Ring) for 20467 | 7 | 24893 | Spring Washers for 20467 | 38 | 25128 | Worm Gear for 20467 | 65 |
| 25068 | Nut for 20467 | 8 | 25099 | Support for 20467 | 39 | 25125 | Bearing for 20467 | 66 |
| 25069 | Lining Ring for 20467 | 9 | 25100 | Bearing for 20467 | 40 | 25131 | Back Guard for 20467 | 68 |
| 25070 | Bearing for 20467 | 10 | 25101 | Spindle Boring Cover for 20467 | 41 | 25132 | Worm Pole for 20467 | 69 |
| 24867 | Speed Handle for 20467 | 11 | 25102 | Big Gear for 20467 | 42-1 | 25133 | Back Cover for 20467 | 70 |
| 25072 | Handle Shaft for 20467 | 12 | 25103 | Gear for 20467 | 42-2 | 25134 | Motor Box for 20467 | 71 |
| 25073 | Bushing for 20467 | 13 | 25104 | Roller for 20467 | 42-3 | 25135 | Crank Lever for 20467 | 72 |
| 25074 | Oil Seal for 20467 | 14 | 24880 | Spring for 20467 | 42-4 | 25136 | Handle for 20467 | 73 |
| 24870 | Tighten Handle for 20467 | 15 | 25106 | Taper Gear Wheel 1 for 20467 | 43 | 25137 | Connecting Rod for 20467 | 74 |
| 25076 | Block Handle for 20467 | 16 | 25107 | Motor for 20467 | 44 | 25138 | Stand Column for 20467 | 75 |
| 24865 | Handle Shifter Cover for 20467 | 17 | 25108 | Combination of Gear for 20467 | 45 | 25139 | Spring for 20467 | 76 |
| 24967 | Plug for 20467 | 18 | 25109 | Bushing for 20467 | 46 | 24939 | Spacer for 20467 | 77 |
| 25079 | Cam-Gear Shifter for 20467 | 19 | 25110 | Claw Type Clutch for 20467 | 47 | 24883 | Nut for 20467 | 78 |
| 25080 | Attachment Hub for 20467 | 20 | 25111 | Inner Gear for 20467 | 48 | 24908 | Press Board for 20467 | 79 |
| 25081 | Taper Gear Wheel 1 for 20467 | 21 | 25112 | Gear Box for 20467 | 49 | 25143 | Brand for 20467 | 80 |
| 25082 | Circlips for Shaft for 20467 | 22 | 25113 | Support for 20467 | 50 | 24922 | Green Button Round for 20467 | 81 |
| 25083 | Planetary Gear for 20467 | 23 | 25114 | Base for 20467 | 51 | 24924 | Red Button Round without Timer for 20467 | 82 |
| 25084 | Bearing for 20467 | 24 | 25115 | Retainer-Spring for 20467 | 52 | 25146 | Run Capacitor 20 UF for 20467 | |
| 25085 | Operating Shelf for 20467 | 25 | 24911 | Nut for 20467 | 53 | 25147 | Start Capacitor 100 UF for 20467 | |
| 25086 | Safety Guard for 20467 | 26 | 24882 | Ring for 20467 | 54 | 24944 | Contact-Relay for 20467 | |
| 25087 | Working Shaft for 20467 | 27 | 25118 | Gear Shaft for 20467 | 55 | 25149 | Power Cord for 20467 | |
| 25006 | Bearing for 20467 | 28 | 25119 | Key for 20467 | 56 | 25150 | Reset-Overload Switch for 20467 | |
| 25089 | Oil Seal for 20467 | 29 | 24898 | Circlips for Shaft for 20467 | 57 | 25151 | Safety Guard-Bowl Micro Switch for 20467 | |
| 25090 | Bowl for 20467 | 30 | 25121 | Gear for 20467 | 58 | 25152 | Timer Knob for 20467 | |
| 25091 | Cover for 20467 | 31 | 25122 | Bushing for 20467 | 59 | | | |
| 24985 | Plug Cover for 20467 | 32 | 25123 | Gear for 20467 | 60 | | | |