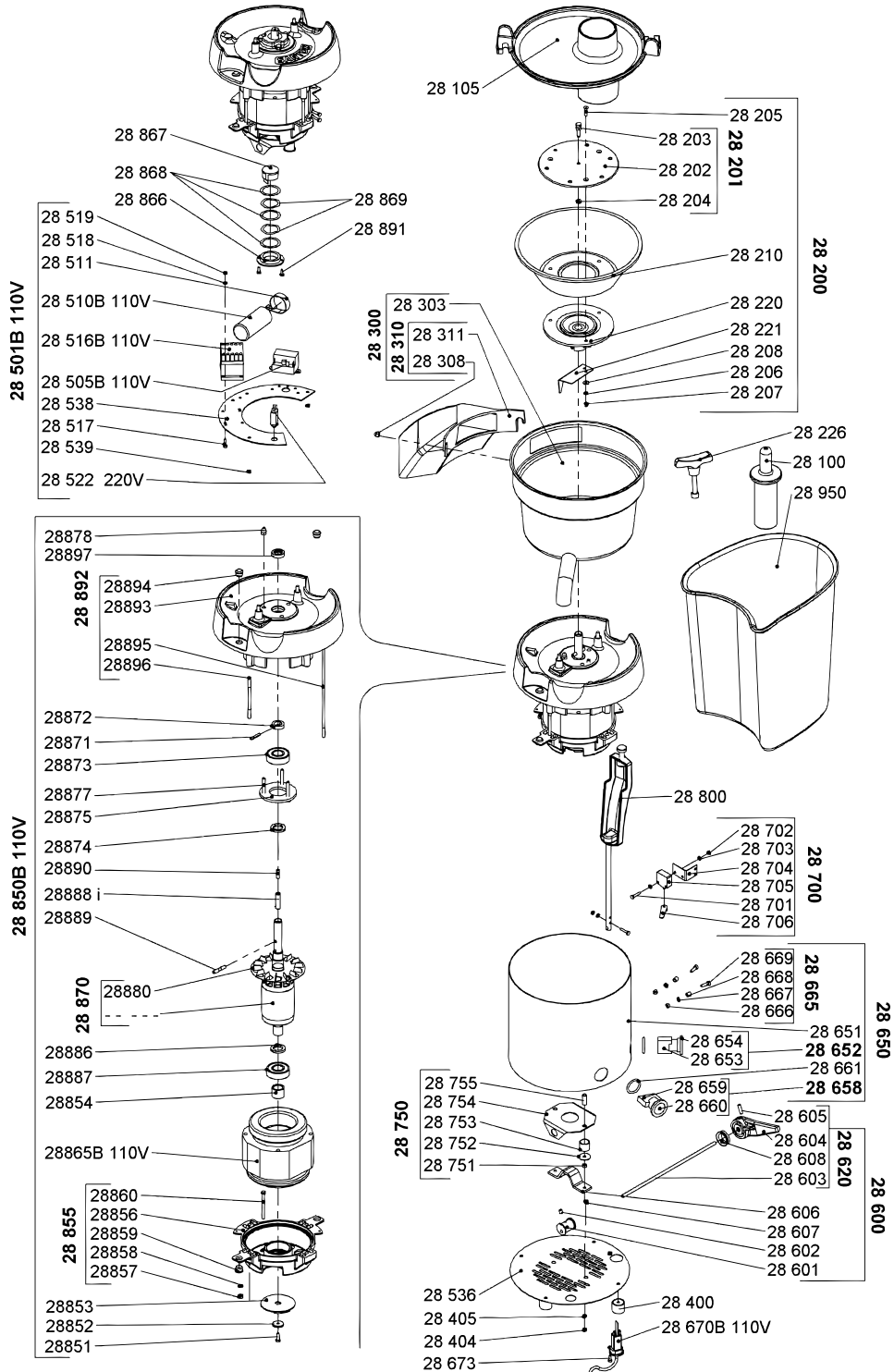


Parts Breakdown

Model Santos 28 10827



Parts Breakdown

Model Santos 28 10827

Item No.	Description	Position	Item No.	Description	Position	Item No.	Description	Position
40749	Pusher - Polyethylene for 10827	28100	42589	Locking Axle for 10827	28603	42622	Screw M5X15 Left for 10827	28851
40750	Aluminum Top Cover for 10827	28105	42590	Aluminium Locking Lever for 10827	28604	42623	Gear Lock Washer for 10827	28852
39843	Complete Basket Standard with Grating Disc for 10827	28200	42591	Screw HC M 6 X 8 for 10827	28605	40767	Braking Disc for 10827	28853
14838	Complete Blade (Grating Disc) with Locking Screw for 10827	28201	42592	Cam Stop for 10827	28606	42624	Rear Bearing Spacer for 10827	28854
14839	Blade Only without Locking Screw for 10827	28202	42593	Nut H M 5 Zn for 10827	28607	42625	Complete Rear Flange for 10827	28855
40752	Locking Screw for Basket for 10827	28203	42594	Gasket-V-Ring V25 for 10827	28608	42626	Rear Flange Only for 10827	28856
41360	Nut H M 6 S/S for 10827	28204	42595	Locking Assembly for 10827	28620	42627	Nut H M 6 Zn for 10827	28857
42569	Screw FS M 5 X 20 S.Steel for 10827	28205	42596	Complete Stainless Steel Body for 10827	28650	42628	Washer AZ 6 for 10827	28858
41361	Washer Grower W5 for 10827	28206	42597	Stainless Steel Body for 10827	28651	42629	Guide Ring for 10827	28859
41362	Cap Nut H M 5 S.Steel for 10827	28207	40762	Complete Start Button for 10827	28652	42630	Brake Threaded Rod for 10827	28860
42570	Washer 5.5X12 S.Steel for 10827	28208	42598	Start Block for 10827	28653	42631	Stator Only 100-120V 50/60Hz for 10827	28865B
40753	Basket (Strainer) Only Standard for 10827	28210	40763	Start Button for 10827	28654	42632	Thermal Protector Holder for 10827	28866
39840	Basket Plate Only for 10827	28220	40764	Complete Stop Button for 10827	28658	42633	Thermostat Safety Team for 10827	28867
42571	Ejection Wing Only for 10827	28221	42599	Stop Block for 10827	28659	42634	Washer for 10827	28868
40754	Special Key (Wrench) for 10827	28226	40765	Stop Button for 10827	28660	42635	Crinkle Washer for 10827	28869
40755	Complete Bowl with Chute for 10827	28300	42600	O-Ring Seal for 10827	28661	42636	Pin 5 X 25 for 10827	28871
42572	Bowl 28 for 10827	28303	42601	Complete Locking Lever Stop for 10827	28665	42637	Bearing Washer for 10827	28872
42573	Cap Nut H M 6 S.Steel for 10827	28308	42602	Nut H M 5 Zn for 10827	28666	40768	Bearing 6204 for 10827	28873
42574	Removable Alu Chute with 2 Screws for 10827	28310	42603	Washer AZ 5 for 10827	28667	42638	Upper Bearing Spacer for 10827	28874
42575	Removable Alu Chute Only for 10827	28311	42604	Stop Spacer for 10827	28668	42639	Bearing Washer for 10827	28875
42576	Foot for 10827	28400	42605	Screw CHC M 5 X 15 Zn for 10827	28669	42640	Screw H M6X40 S.Steel for 10827	28877
42577	Cap Nut H M 5 S.Steel for 10827	28404	42606	Power Cord for 10827	28670B	42641	Cap Nut H M 6 S.Steel for 10827	28878
42578	Split Washer W 5 for 10827	28405	42607	Screw H 4.2X12.7 Zn Auto for 10827	28673	42642	Fan for 10827	28880
42579	Electric Components Assembly 110V for 10827	28501B	42608	Complete Safety Switch for 10827	28700	42643	Upper Bearing Spacer for 10827	28886
40757	Starting Relay 110V for 10827	28505B	42609	Screw H M 4 X 20 Zn for 10827	28701	42644	Bearing 6204 for 10827	28887
40758	Capacitor 180 MF 100-120V 50/60 Hz for 10827	28510B	42610	Nut H M 4 Zn for 10827	28702	40532	Motor Shaft Insert for 10827	28888I
42580	Capacitor Ring for 10827	28511	42611	Washer AZ 4 for 10827	28703	39841	Basket Driving Pin for 10827	28889
40759	Contacto 100-120 V 50/60 Hz for 10827	28516B	42612	Switch Corner Plate for 10827	28704	40533	Screw HC M 6 X 20 for 10827	28890
42581	Screw H M 4 X 16 Zn for 10827	28517	42613	Safety Switch for 10827	28705	42646	Screw 4X10 for 10827	28891
42582	Washer AZ 4 for 10827	28518	42614	Lever End for 10827	28706	42647	Complete Upper Flange for 10827	28892
42583	Nut H M 4 Zn for 10827	28519	42615	Complete Braking Disc for 10827	28750	42648	Upper Flange for 10827	28893
40760	Thermal Protector 8A for 10827	28522	42616	Nut H M 5 Zn for 10827	28751	42649	Guide Ring for 10827	28894
42584	Bottom Plate Only for 10827	28536	42617	Washer for 10827	28752	42650	Base Assembly Rod for 10827	28895
42585	Components Assembly Plate for 10827	28538	42618	Brake Spring for 10827	28753	40534	Motor Assembly Rod for 10827	28896
42586	Nut HM M 5 Zn for 10827	28539	42619	Braking Plate for 10827	28754	40769	Gasket 16X26X7 for 10827	28897
40761	Complete Locking Assembly for 10827	28600	42620	Spacer (Guide) for 10827	28755	39842	Rotor + Shaft + Fan for 10827	28870
42587	Locking Cam for 10827	28601	40766	Bowl Blocking Arm for 10827	28800	40770	Pulp Container for 10827	28950
42588	Cam Fixing Screw for 10827	28602	41186	Complete Motor 100-120V 50/60Hz for 10827	28850B			