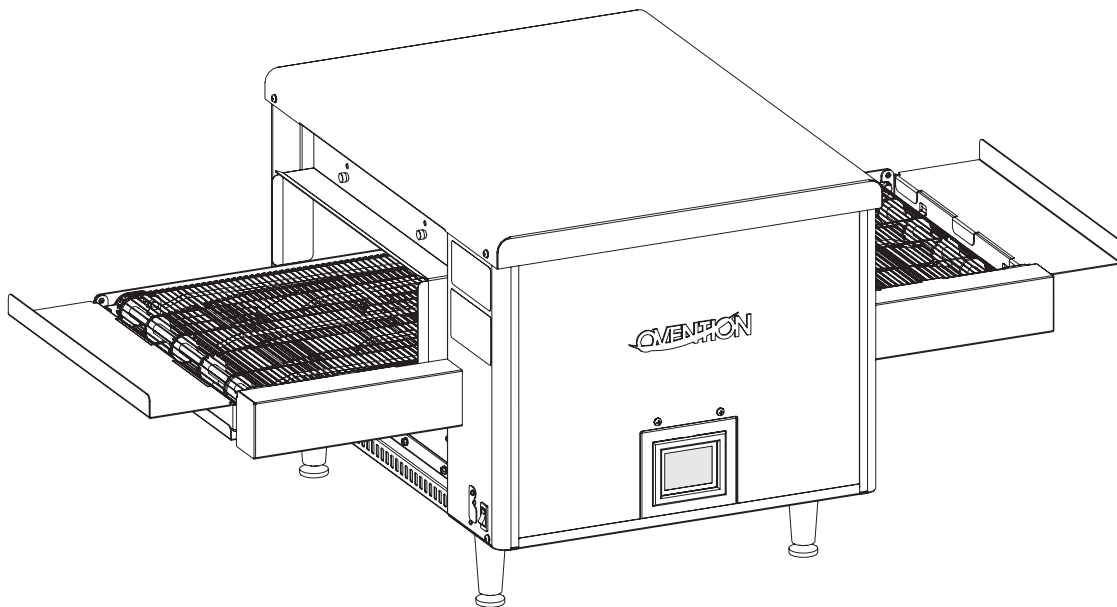




# Finishing Oven Model F1400



## Replacement Parts List

### IMPORTANT NOTE:

Locate the Specification Label on unit to determine exact Model Name and electrical specifications. This information is needed to identify the correct replacement parts. See exploded view illustration(s) for Specification Label location.

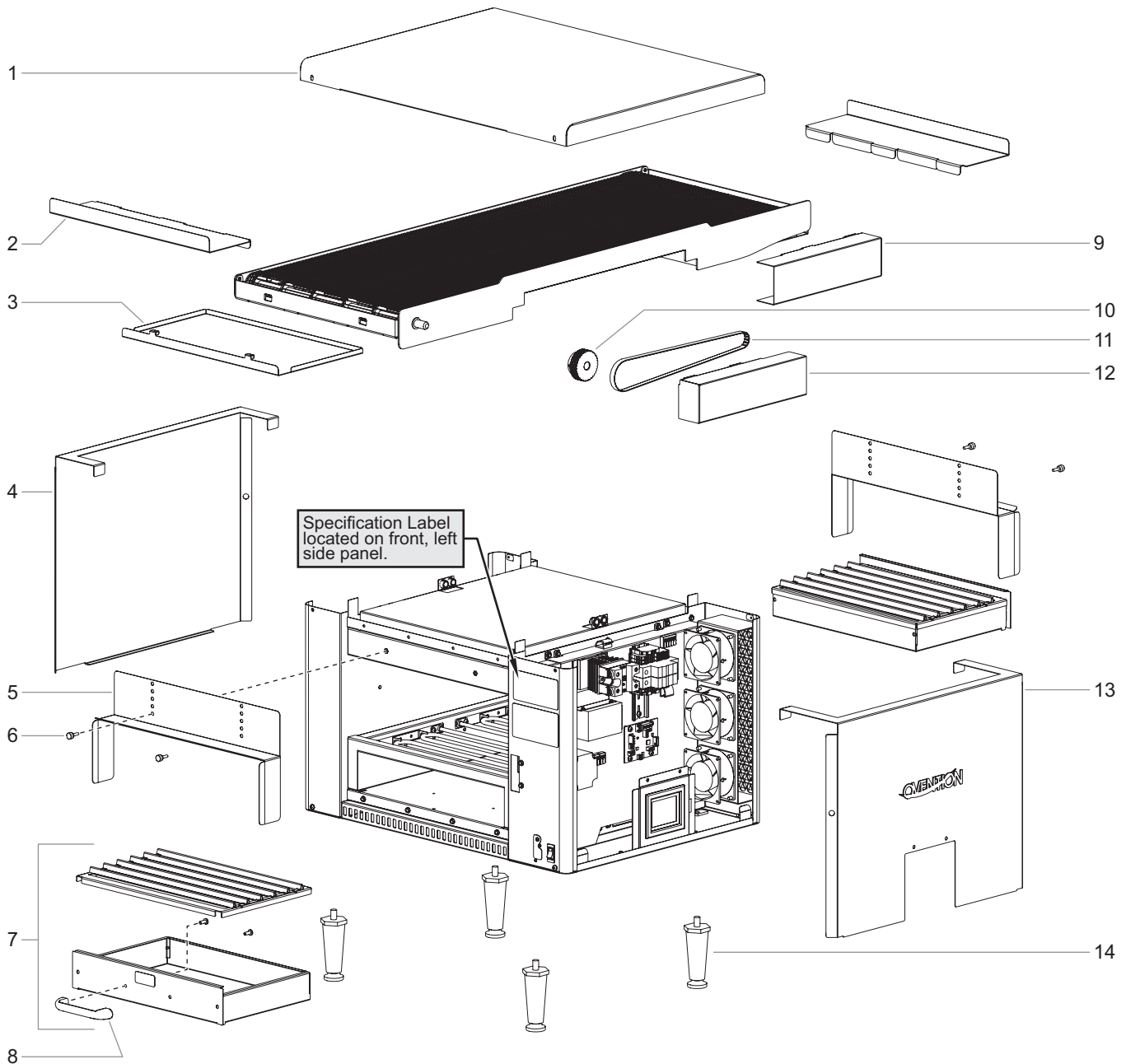


Use of replacement parts other than those supplied by Ovention may result in damage to unit or injury to personnel and will void all warranties.



Need help?  
Call our toll-free  
Ovention Hotline  
855-298-OVEN(6836)

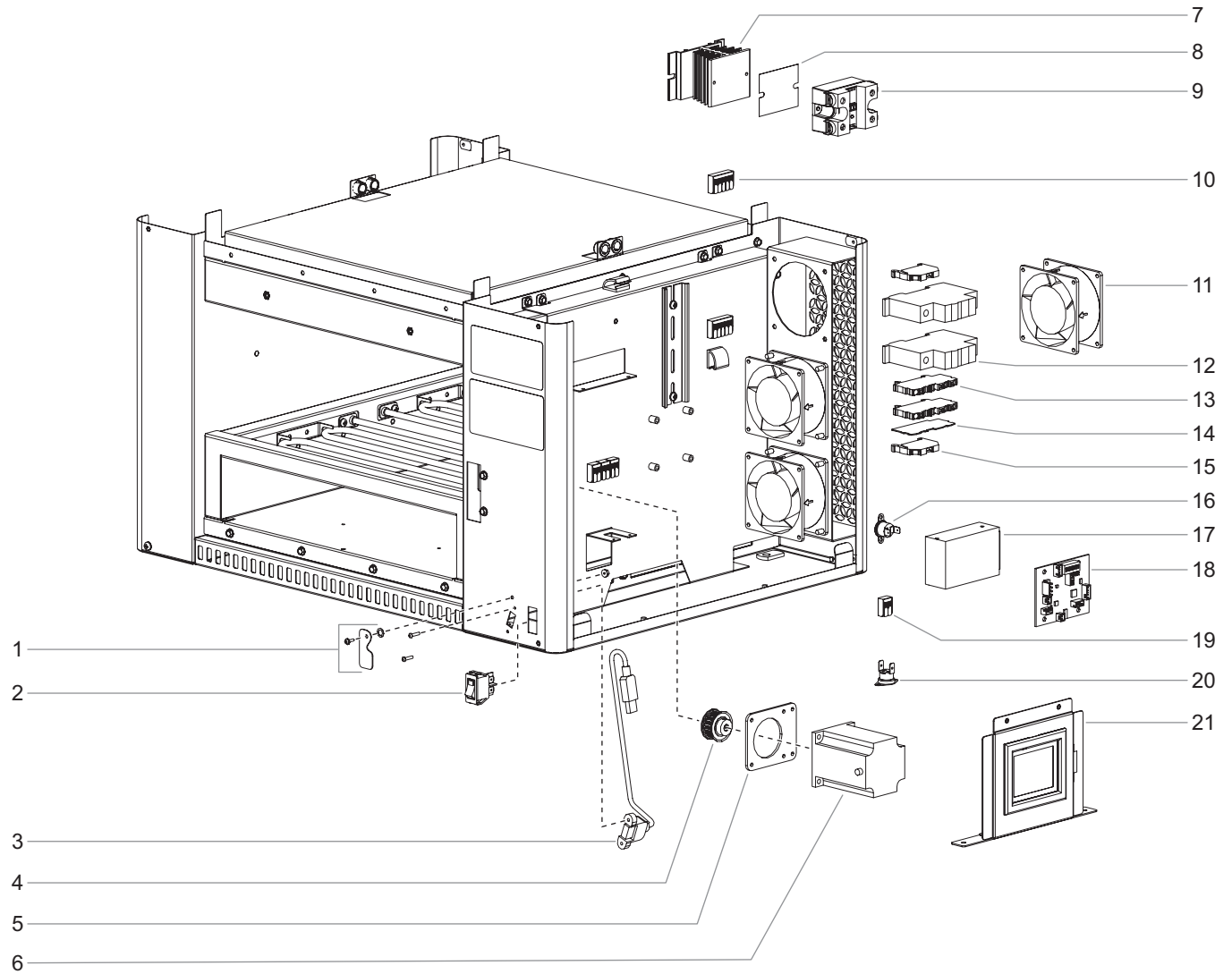
## Main Assembly Replacement Parts



Item	Description	Part Number	Qty.
1	Top Cover	04.68.071.00	1
2	Conveyor End Stop		
	4" (standard)	04.68.083.00	2
	6" (optional)	04.68.082.00	1-2
3	Crumb Tray	04.55.989.00	2
4	Rear Panel	04.68.071.00	1
5	Conveyor Tunnel	04.68.084.00	2
6	Thumbscrew	05.04.219.00	4
7	Crumb Drawer Assembly (includes item 8)	R04.68.074.00	2
8	Handle, Crumb Drawer	05.30.392.00	2

Item	Description	Part Number	Qty.
9	Belt Cover, Right	04.68.077.00	1
10	Drive Wheel	04.55.027.00	1
11	Drive Belt	04.68.085.00	1
12	Belt Cover, Left	04.68.076.00	1
13	Front Panel w/Decal	R04.68.072.00	1
14	Leg, 4"	05.30.065.00	4
	Wiring Diagram	10-01-1697	

## Front Compartment Replacement Parts



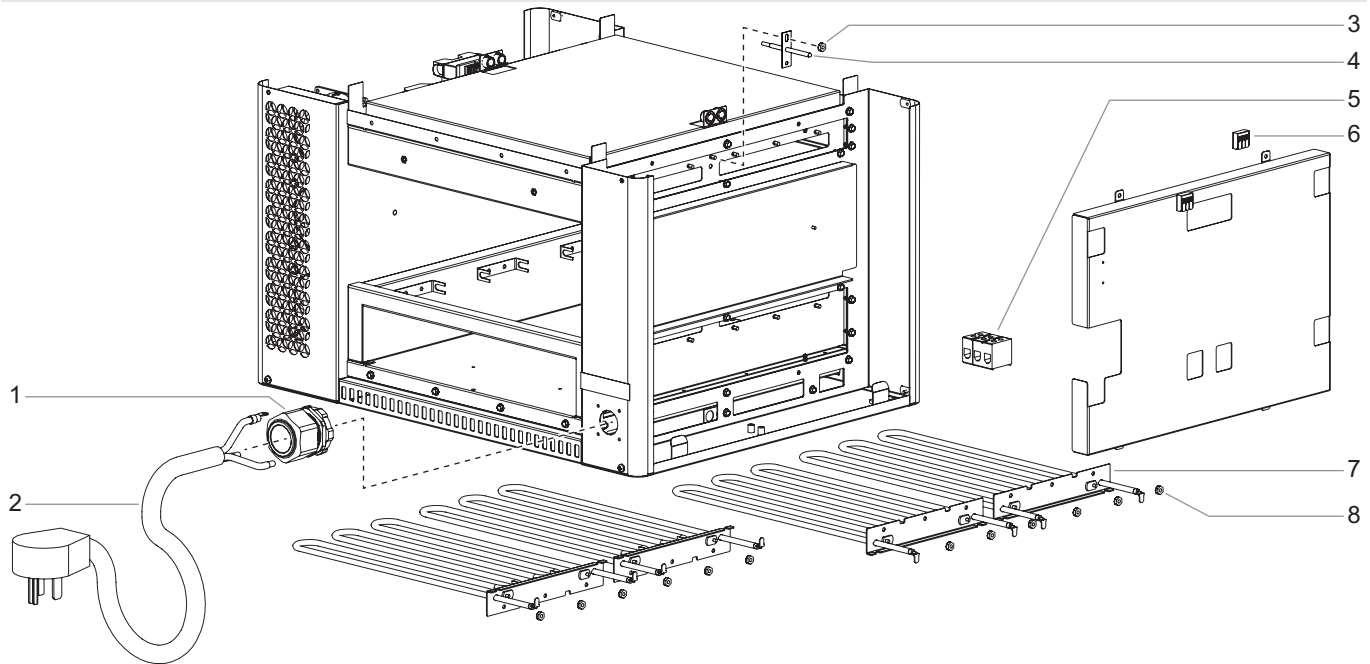
Item	Description	Part Number	Qty.
1	USB Cover Assembly	R04.55.674.00	1
2	Power Switch	02.19.081.00	1
3	USB Cable, 10.5"	<a href="#">02.20.515.00</a>	1
4	Gear, 16 Teeth	<a href="#">04.55.026.00</a>	1
5	Mounting Plate, Drive Motor	04.68.068.00	1
6	Drive Motor	<a href="#">02.12.132.00</a>	1
7	Heat Sink	04.09.872.00	1
8	Thermal Pad	05.01.089.00	1
9	Relay	02.01.458.00	1
10	Lever Wire Nut, 5 Pole	02.20.212.00	2
11	Cooling Fan	02.12.010.00	3

Item	Description	Part Number	Qty.
12	Mini Circuit Breaker, 15 A	<a href="#">02.03.079.00</a>	2
13	Terminal Block, 3 Position	<a href="#">02.15.071.00</a>	2
14	T-Block Insulator	<a href="#">02.15.072.00</a>	1
15	T-Block Stop	<a href="#">02.15.075.00</a>	2
16	Thermostat, High Limit	02.16.120.00	1
17	Switching Power Supply	02.17.064.00	1
18	PCB, Drive Motor	<a href="#">02.01.612.00</a>	1
19	Lever Wire Nut, 2 Pole	<a href="#">02.20.410.00</a>	4
20	Thermal Disc	02.16.228.00	1
21	Control Board Assembly	<a href="#">R02.01.448.F14</a>	1

**NOTE:** The last four digits in a ten digit numerical serial number are the manufacturing date code: 962506**2004**

Year 2020 ———  
Week Four ———

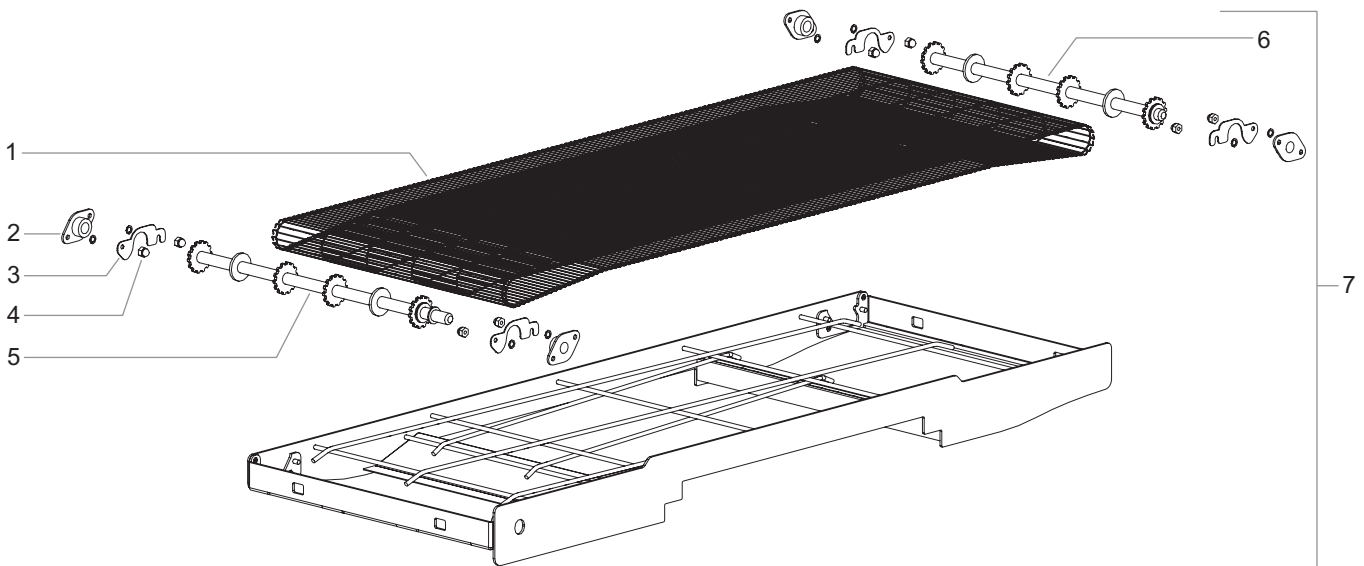
## Rear Compartment Replacement Parts



Item	Description	Part Number	Qty.
1	Cord Grip	<a href="#">02.20.509.00</a>	1
2	Power Cord w/Plug	<a href="#">02.18.557.00</a>	1
3	Hex Nut, Probe	05.04.472.00	1
4	Temperature Probe	02.01.192.00	1

Item	Description	Part Number	Qty.
5	Terminal Block, 3 Position	02.15.046.00	1
6	Lever Wire Nut, 3 Pole	<a href="#">02.20.411.00</a>	2
7	Heating Element, 1725 W	R02.05.1155.00	4
8	Hex Nut, Element	<a href="#">05.04.023.00</a>	12

## Conveyor Belt Assembly Replacement Parts



Item	Description	Part Number	Qty.
1	Conveyor Belt Kit	R04.55.050.C14	1
2	Flange Bearing Kit (includes four bearings)	<a href="#">R05.02.050.00</a>	1
3	Bearing Plate	<a href="#">0703-3602</a>	4
4	Cap Nut	<a href="#">05.04.351.00</a>	8
5	Drive Sprocket Assembly	<a href="#">0709-2008</a>	1
6	Idle Sprocket Assembly	<a href="#">0709-2009</a>	1
7	Conveyor Assembly (includes items 1-6)	<a href="#">R04.55.985.00</a>	1

**Ovention, Inc.**  
 P.O. Box 340500  
 Milwaukee, WI 53234-0500 U.S.A.  
 855-298-OVEN(6836)  
[connect@oventionovens.com](mailto:connect@oventionovens.com)  
[partsandservice@oventionovens.com](mailto:partsandservice@oventionovens.com)  
[www.oventionovens.com](http://www.oventionovens.com)