



BUILT TO LAST BUILT TO LAST BUILT TO LAST BUILT TO LAST BUILT TO LAST BUILT TO LAST

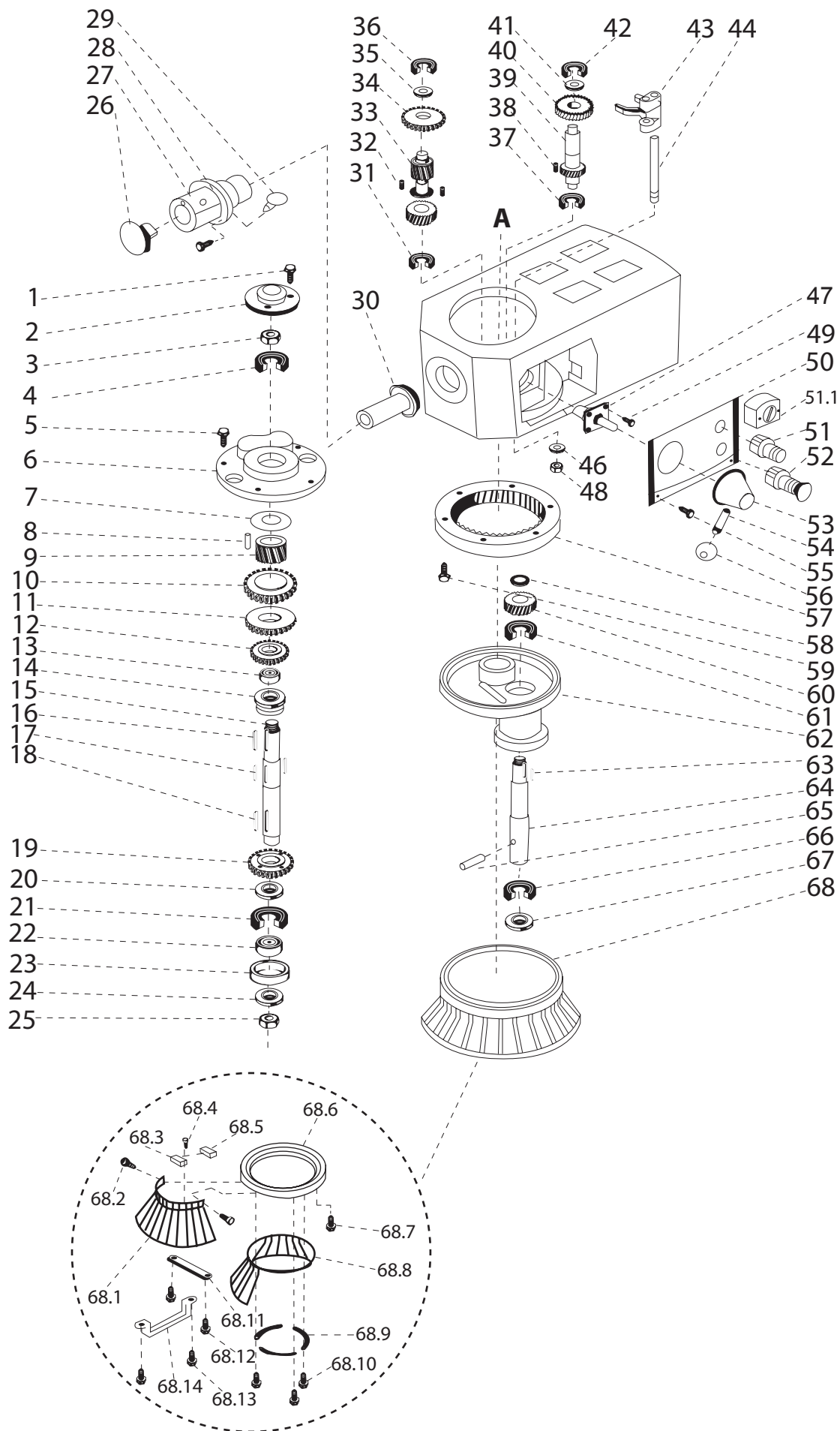
**Precision
Mixers**

BUILT TO LAST BUILT TO LAST BUILT TO LAST

BUILT TO LAST BUILT TO LAST BUILT TO LAST BUILT TO LAST BUILT TO LAST BUILT TO LAST

Parts Breakdown Instructions & Warranty HUB-40

**Precision North America Food Machinery LLC.
60 Commerce Ave.
Albany, New York 12206
Phone: 518-462-3387 Fax: 518-462-3389
1-877-R-MIXERS (1-877-764-9377)
www.precisionmixers.com**



40-quart, Precision Mixer, Model HUB-40

<u>Item #</u>	<u>Part #</u>	<u>Description</u>		<u>Item #</u>	<u>Part #</u>	<u>Description</u>
1	54001	Screw		43	54043	Shift yolk
2	54002	Cap		44	54044	Shift Slide Rod
3	54003	Nut		46	54046	Washer
4	54004	Bearing		47	54047	Shift Assembly
5	54005	Screw		48	54048	Nut
6	54006	Transmission Cover		49	54049	Screw
7	54007	Race		50	54050	Plate
8	54008	Roller		51	54051	Start Switch
9	54009	Clutched Inner Gear		51-1	5451-1	Timer
10	54010	Clutched Outer Geer		52	54052	Stop Switch
11	54011	Beveled Gear		53	54053	Shift Hub
12	54012	Upper Drive Gear		54	54054	Shift Handle
13	54013	Race		55	54055	Screw
14	54014	Clutch		56	54056	Shift Knob
15	54015	Main Shaft		57	54057	Planetary Ring Gear
16	54016	Key		58	54058	Snap Ring
17	54017	Key		59	54059	Screw
18	54018	Key		60	54060	Planetary Gear
19	54019	Drive Gear Cover		61	54061	Bearing
20	54020	Race		62	54062	Planetary, Cast
21	54021	Bearing		63	54063	Key
22	54022	Sleeve		64	54064	Planetary Shaft
23	54023	Seal		65	54065	Pin
24	54024	Washer		66	54066	Bearing
25	54025	Nut		67	54067	Seal
26	54026	Attachment Hub Cap		68	50068	Complete Safety Guard
27	54027	Bolt		68-1	50068-1	Fixed Guard
28	54028	Front Hub		68-2	50068-2	Screw
29	54029	Thumb Screw		68-3	50068-3	Micro-Switch
30	54030	Attachment Gear		68-4	50068-4	Screw
31	54031	Bearing		68-5	50068-5	Switch Cover
32	54032	Key		68-6	50068-6	Mounting Ring
33	54033	Speed Shaft		68-7	50068-7	Screw
34	54034	Gear		68-8	50068-8	Front Cage
35	54035	Snap Ring		68-9	50068-9	Retainer
36	54036	Bearing		68-10	50068-10	Screw
37	54037	Bearing		68-11	50068-11	Stop
38	54038	Key		68-12	50068-12	Screw
39	54039	Worm Shaft		68-13	50068-13	Screw
40	54040	Brass Gear		68-14	50068-14	Latch
41	54041	Retaining Ring				
42	54042	Bearing				

