



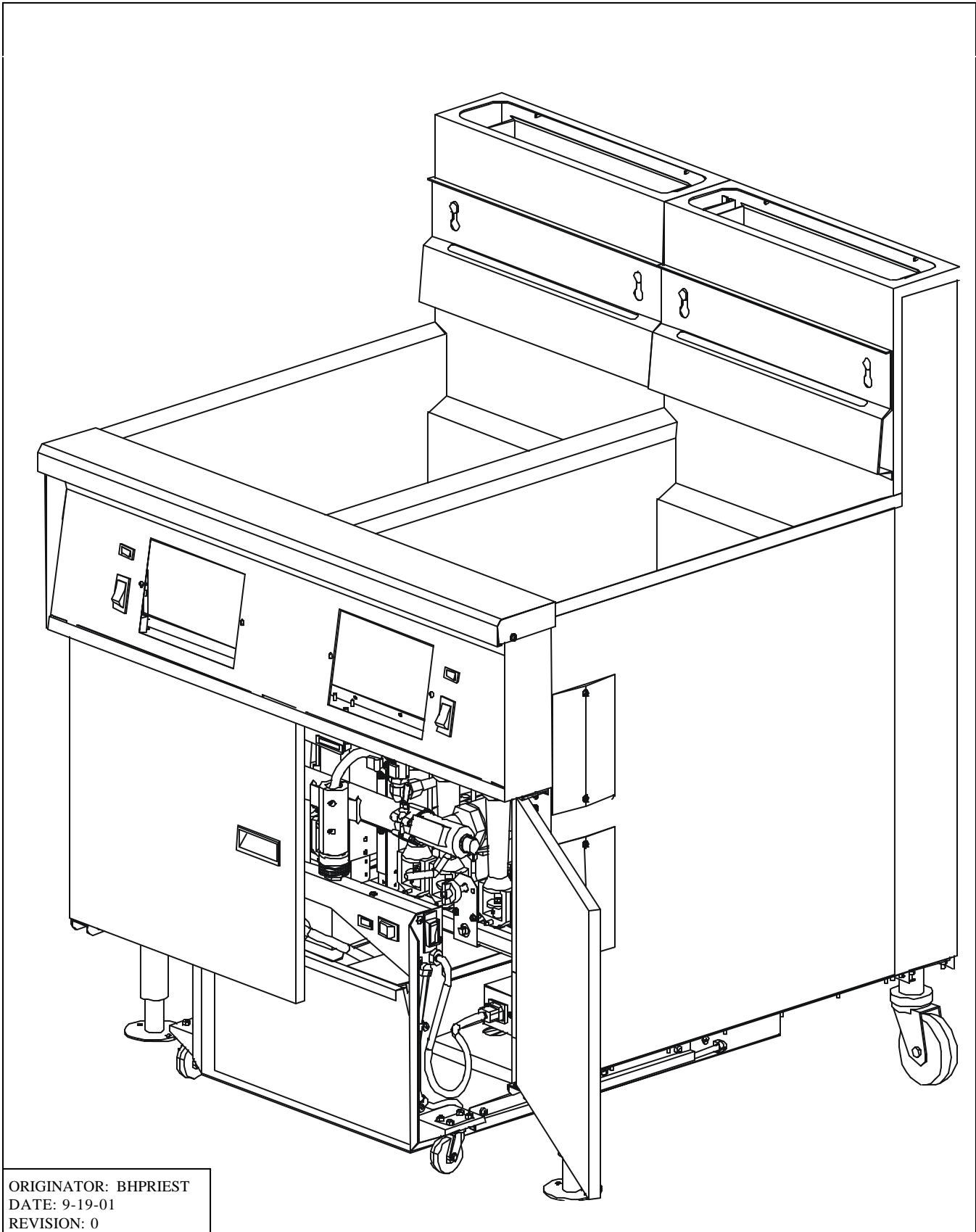
**18-2WKSUFM
GAS FRYER
PARTS MANUAL**

PITCO FRIALATOR

www.pitco.com

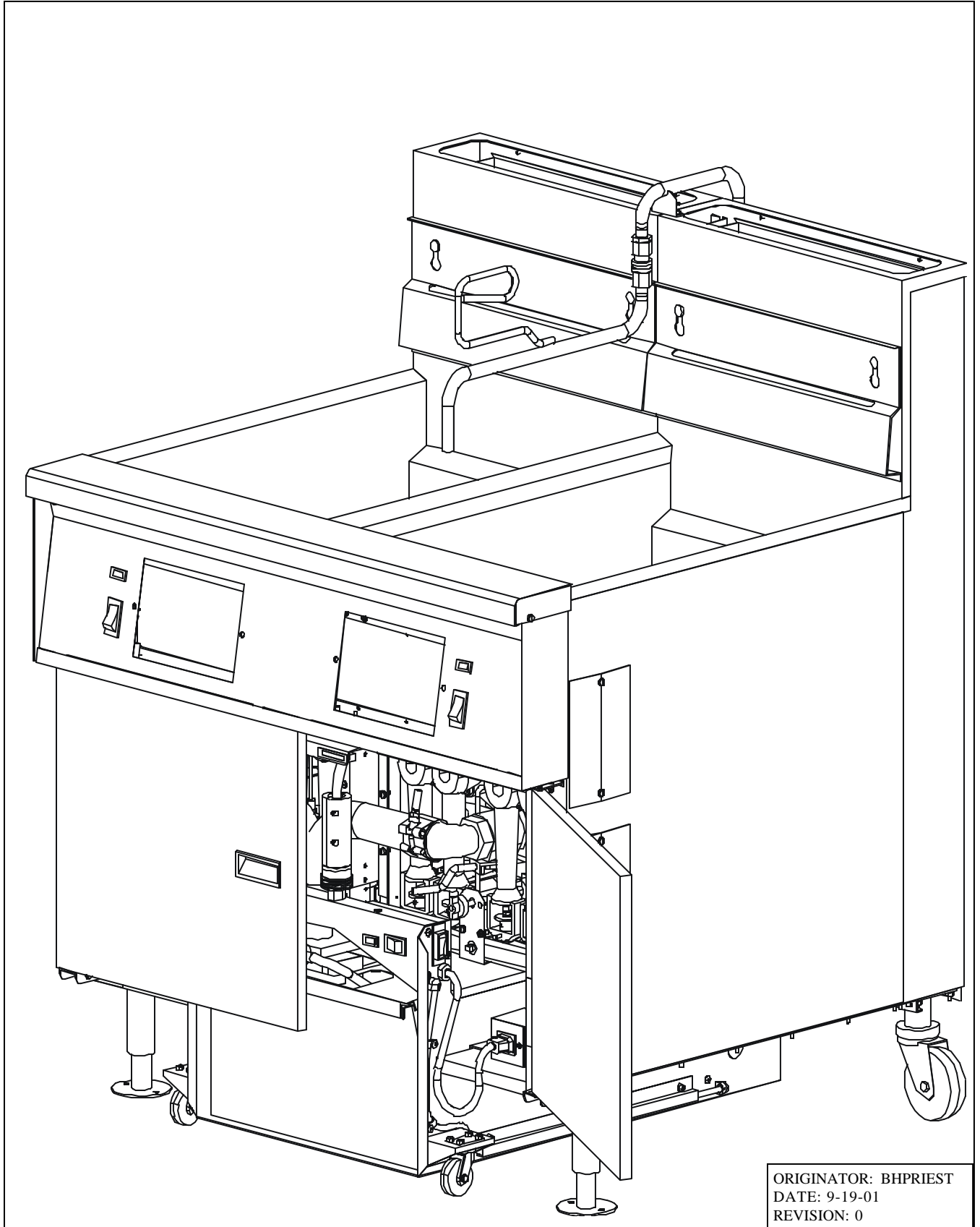
P.O. Box 501, Jct. I-89 & I-93 Concord, NH 03301 USA Telephone • (603) 225-6684 • Fax: (603) 225-8497

**18WKSUFM FRYER
FULL ASSEMBLY**



ORIGINATOR: BHPRIEST
DATE: 9-19-01
REVISION: 0

18WKSUFM FRYER W/FILTER UPGRADE
FULL ASSEMBLY

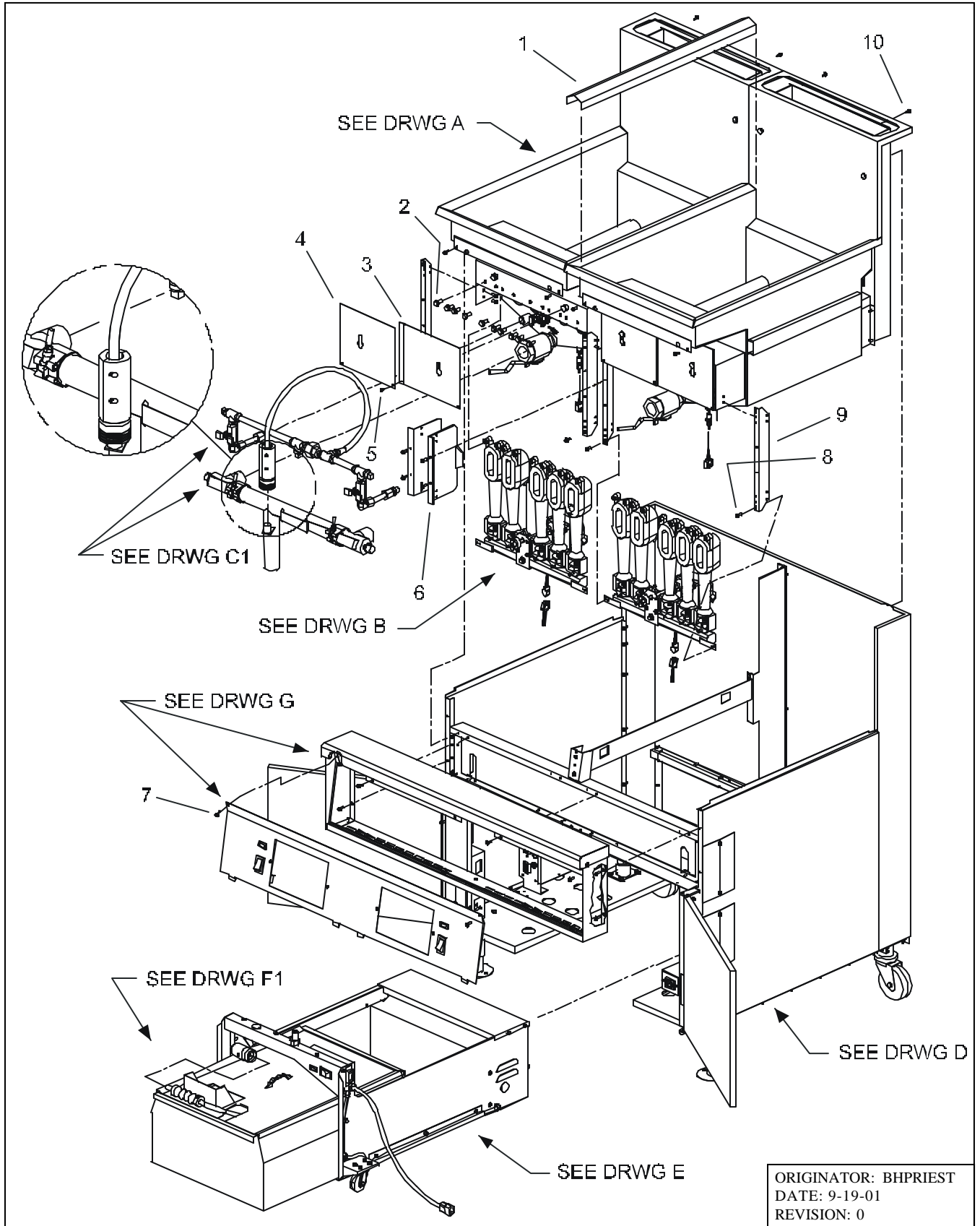


ORIGINATOR: BHPRIEST
DATE: 9-19-01
REVISION: 0

**18WKSUFM FRYER
PARTS LIST**

ITEM #	PART #	PART DESCRIPTION
1	A1900114	CHANNEL STRIP
2	PP11261	BOLT, 5/16-18 X 3/4
3	A3320005	BURNER HEAT SHIELD-RH
4	A3320105	BURNER HEAT SHIELD-LH
5	P0075200	SELF DRILLING SCREW, 8-18 X 1/2
6	A7015401	HOSE BURNER SHIELD
7	P0075400	SELF TAPPING SCREW, 10-24 X 1/2
8	P0075300	SELF DRILLING SCREW, 10-16 X 5/8
9	A8000801	MANIFOLD SUPPORT BRACKET
10	P0075200	SELF DRILLING SCREW, 8-18 X 1/2
 <i>NOTE: SAME AS PARTS LIST ON PAGE 6</i>		

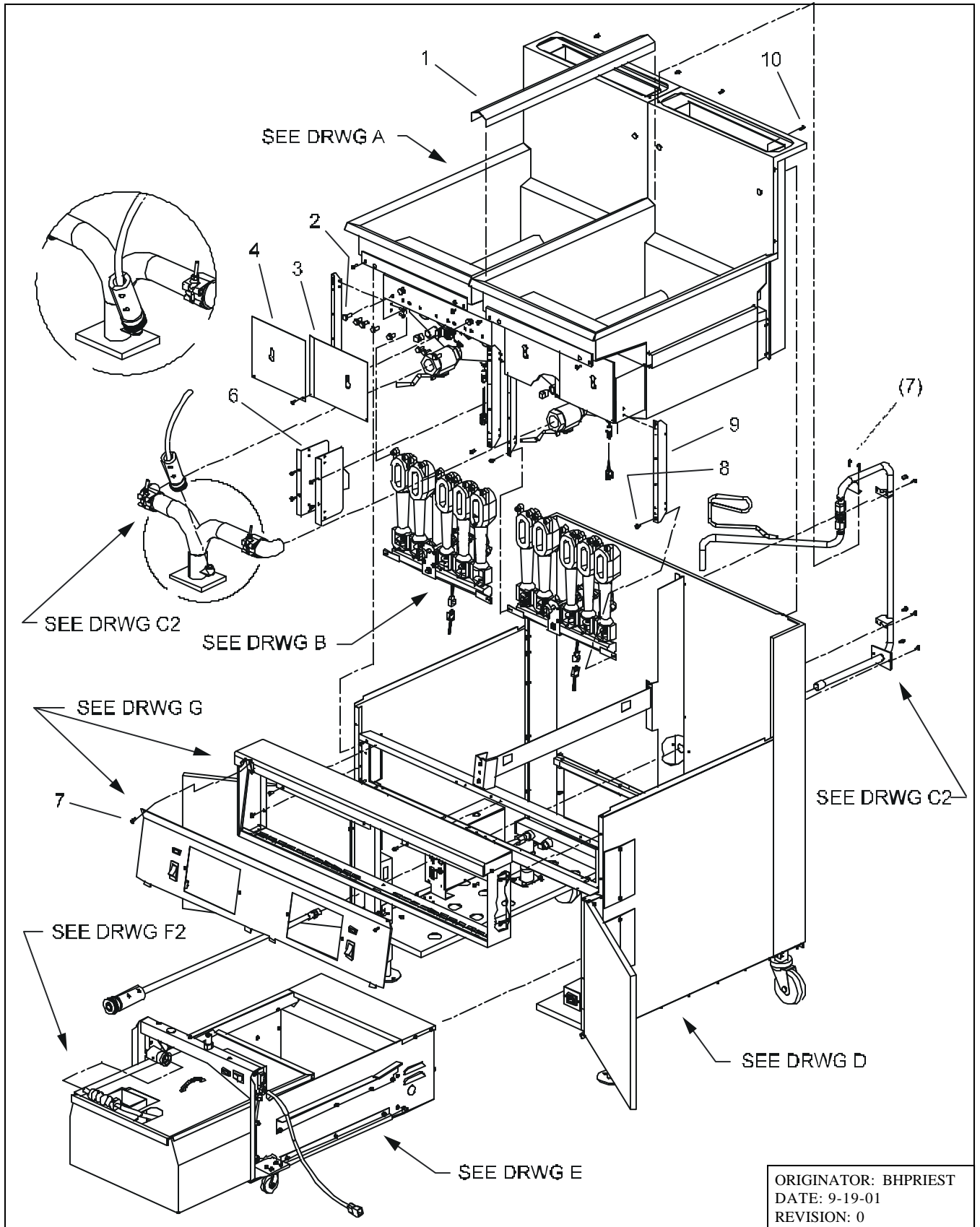
18WKSUFM FRYER



**18WKSUFM FRYER W/ FILTER
UPGRADE PARTS LIST**

ITEM #	PART #	PART DESCRIPTION
1	A1900114	CHANNEL STRIP
2	PP11261	BOLT, 5/16-18 X 3/4
3	A3320005	BURNER HEAT SHIELD-RH
4	A3320105	BURNER HEAT SHIELD-LH
5	P0075200	SELF DRILLING SCREW, 8-18 X 1/2
6	A7015401	HOSE BURNER SHIELD
7	P0075400	SELF TAPPING SCREW, 10-24 X 1/2
8	P0075300	SELF DRILLING SCREW, 10-16 X 5/8
9	A8000801	MANIFOLD SUPPORT BRACKET
10	P0075200	SELF DRILLING SCREW, 8-18 X 1/2
<i>NOTE: SAME AS PARTS LIST ON PAGE 4</i>		

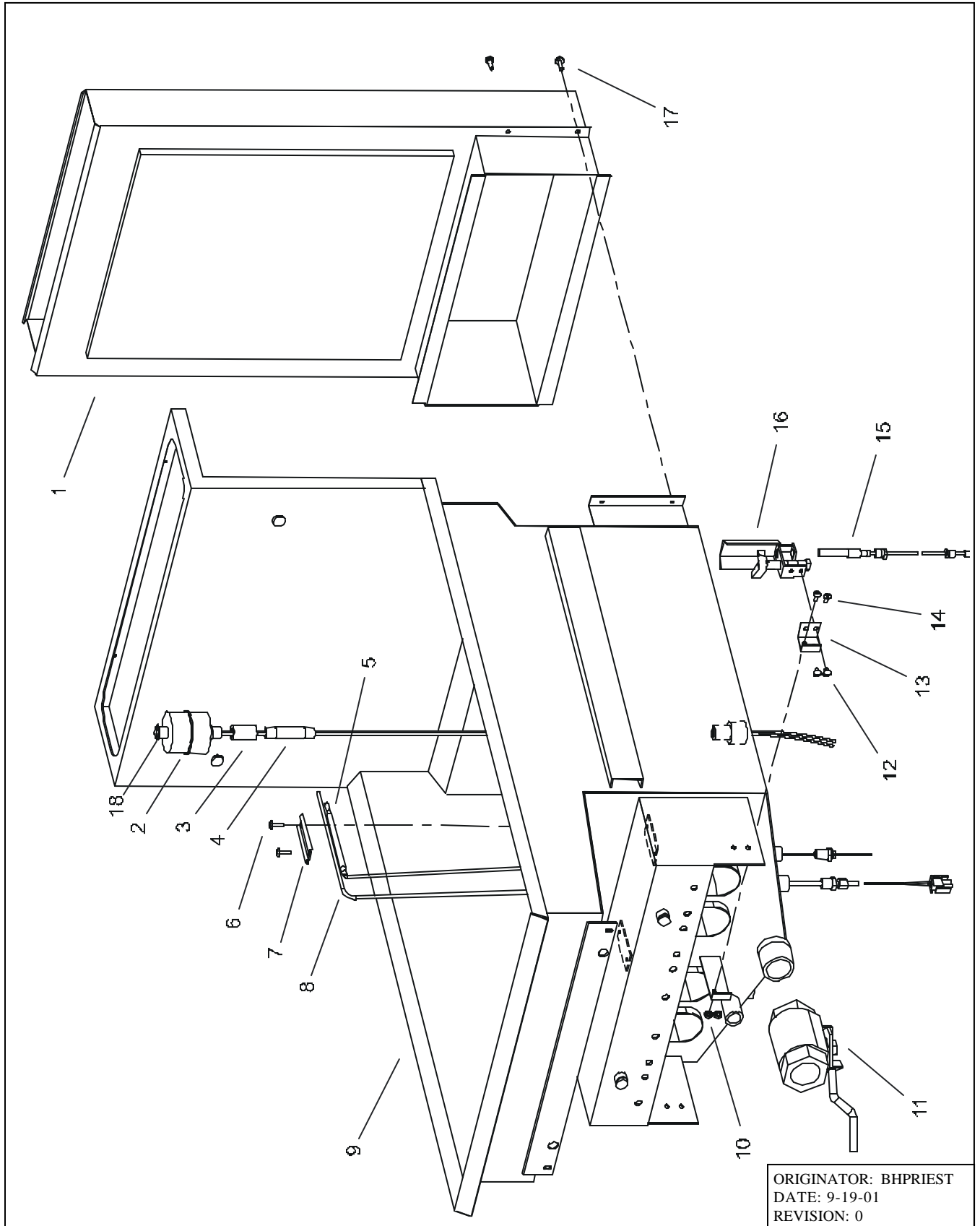
18WKSUFM FRYER W/FILTER UPGRADE



**18WKSUFM TANK & FLUE
DRAWING A PARTS LIST**

ITEM #	PART #	PART DESCRIPTION
1	B3501207	FLUE
2	P5047217	FLOAT SWITCH
3	P7036601	COUPLING, 1/4
4	P7037051	NIPPLE, 1/4 X 2-1/2
5	PP10084	HIGH LIMIT SWITCH
6	PP11366	SCREW, 10-24 X 5/8
7	A1400202	LIMIT/PROBE CLAMP
8	P5044882	THERMISTOR PROBE
9	B3309202	TANK , 18
10	PP10196	KEP NUT, 8-32
11	P6071785	BALL VALVE, 1-1/4
12	P0010400	SCREW, 10-32 X 1/4
13	A3306402	PILOT BRACKET ADAPTER
14		TR HD PHLP SCREW, 8-32 X 3/8
15	P5047541	THERMOPILE
16	B3302601	NATURAL GAS
	B3302602	PROPANE GAS
17	P0075400	SELF TAPPING SCREW, 10-24 X 1/2
18	P7038080	FLOAT SWITCH CLIP

18WKSUFM FRYER & FILTER UPGRADE
DRAWING A TANK & FLUE

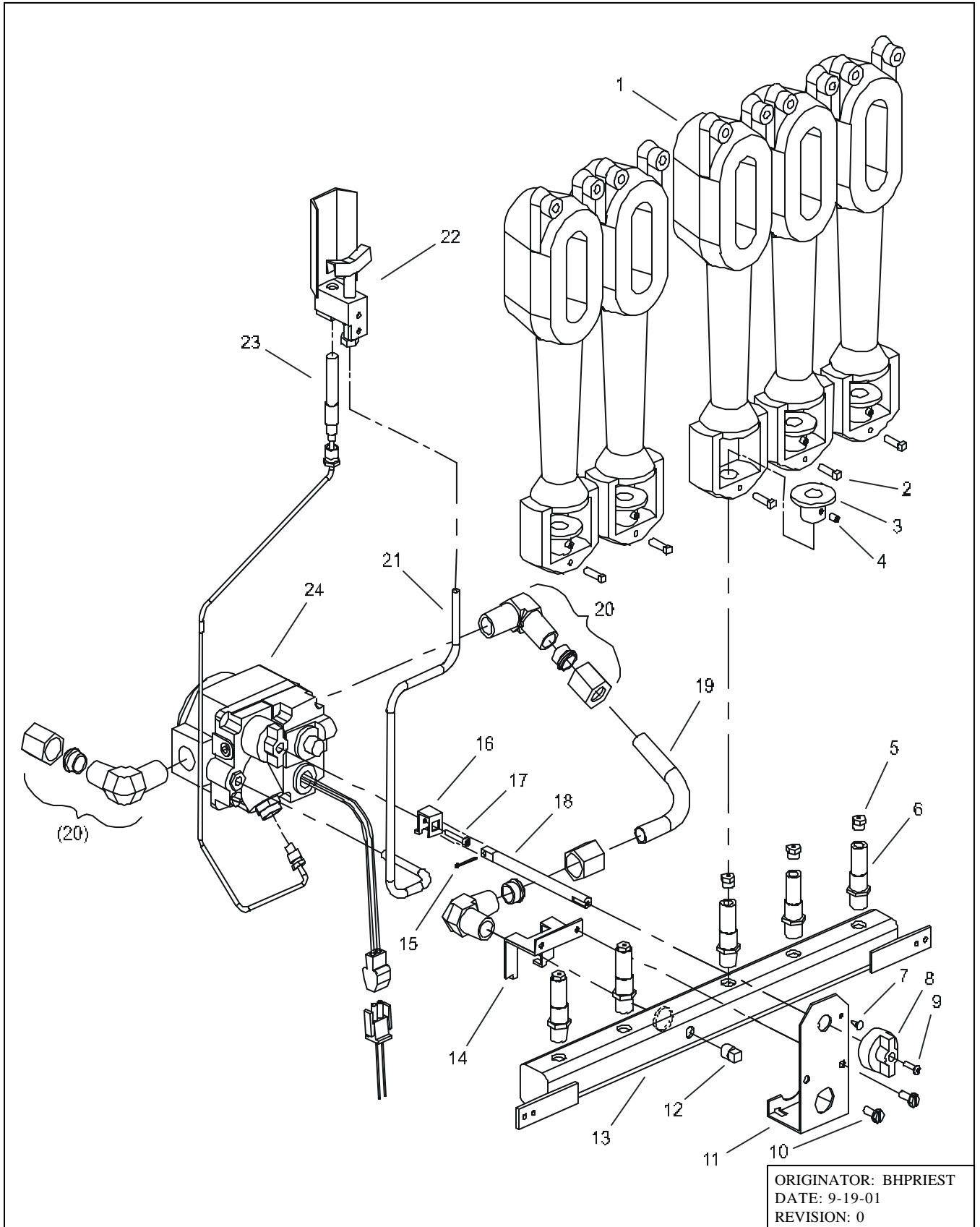


ORIGINATOR: BHPRIEST
DATE: 9-19-01
REVISION: 0

**18WKSUFM FRYER BURNER & GAS VALVE
DRAWING B PARTS LIST**

ITEM #	PART #	PART DESCRIPTION
1	P6071050	4" BURNER
2	P0063550	SQUARE HEAD SET SCREW, 10-24 X 1/2
3	A8001001	AIR COLLAR
4	PP10025	SET SCREW, 10-32 X 1/4
5	P6071339	ORIFICE # 39
6	PP10984	MANIFOLD SPUD
7	P0190700	CANOE CLIP
8	P6071267	UNITROL KNOB
	PP10782	CE UNITROL KNOB
9	P5045661	SCREW (THREAD ROLLING), 6-32 X 7/16
10	P0075400	SELF TAPPING SCREW, 10-24 X 1/2
11	A4012701	UNITROL SUPPORT HANDLE
12	P7036725	PLUG, 1/8"
13	B8019706	MANIFOLD
14	A4012801	UNITROL KNOB CLAMP
15	P0190300	COTTER PIN, 3/32 X 3/4
16	P5045660	UNITROL EXTENSION BRACKET
17	P5045661	UNITROL KNOB EXTENSION SCREW, 6-32 X 7/8
18	A7504911	UNITROL ROD EXTENSION
19	A8001201	GAS VALVE TUBING – OUT
20	PP10106	MALE ELBOW FITTING 90°, .5 X 1/2" NPT
21	A8001801	PILOT TUBING
22	B3302601	NATURAL GAS PILOT ASSEMBLY
	B3302602	LP GAS PILOT ASSEMBLY
23	P5047541	THERMOPILE (DOMESTIC)
	P5047540	THERMOCOUPLE (CE)
24	P5045650	GAS VALVE 120V (NATURAL)
	P5045652	GAS VALVE 120V (PROPANE)
	P5045638	GAS VALVE 24V (NATURAL)
	P5045639	GAS VALVE 24V (PROPANE)
	PP10777	CE GAS VALVE 24V (NATURAL)
	PP10778	CE GAS VALVE 24V (PROPANE)
25	B7510104	GAS VALVE HANDLE EXT. (INCLUDES 8,9,15,16,17,18)

**18WKSUFM FRYER & FILTER UPGRADE
DRAWING B BURNER & GAS VALVE**

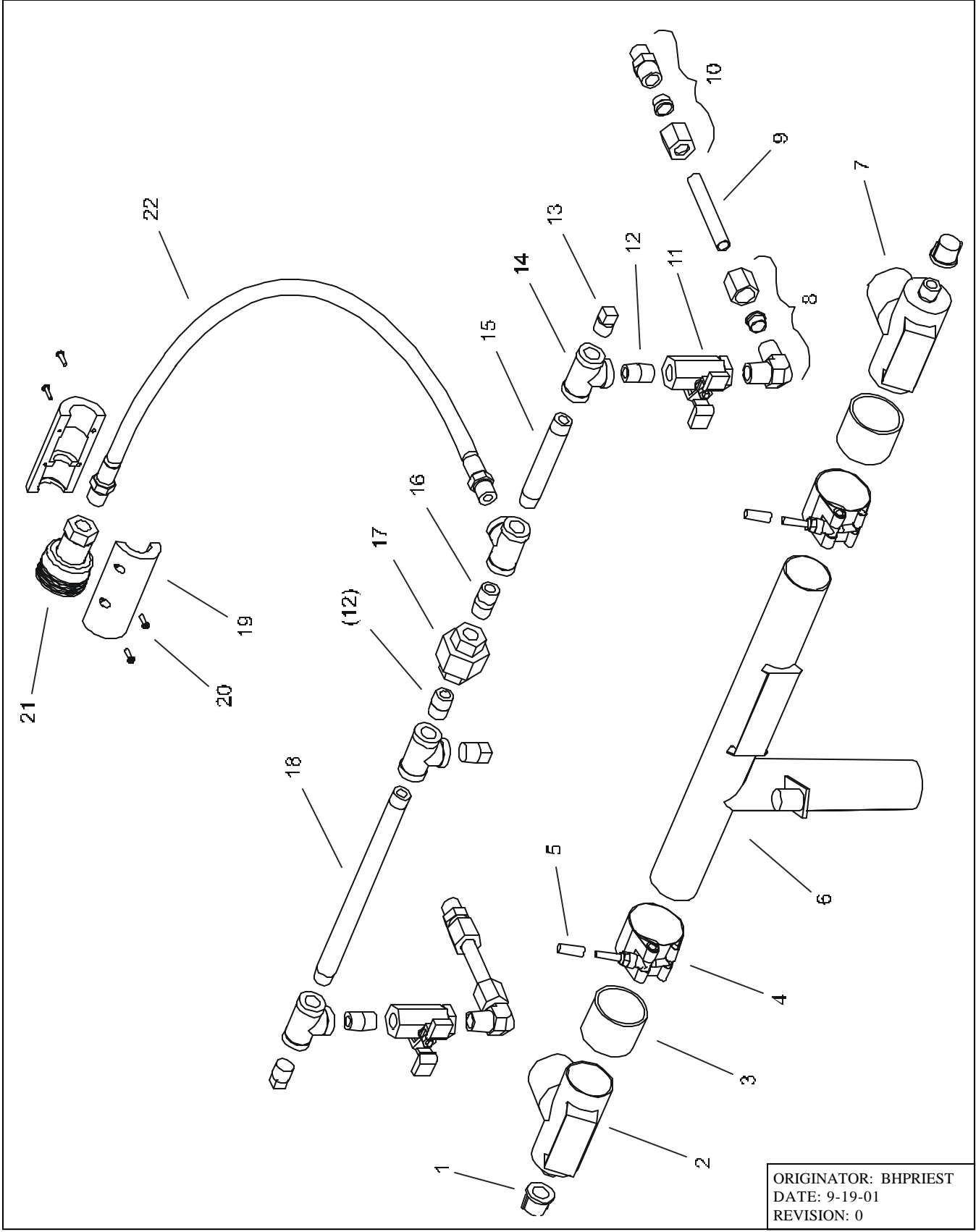


ORIGINATOR: BHPRIEST
DATE: 9-19-01
REVISION: 0

**18WKSUFM FRYER DRAIN & RETURN
DRAWING C1 PARTS LIST**

ITEM #	PART #	PART DESCRIPTION
1	PP10623	CAP, 3/8 NPT
2	B6610801	DRAIN TEE - LH
3	PP10032	DRAIN LINE GASKET
4	PP10034	BAND CLAMP
5	PP10177	PROTECTIVE CAP
6	B6622105	DRAIN TUBING
7	B6610901	DRAIN TEE - RH
8	PP10731	ELBOW 90 ⁰ , .5 TB X 3/8
9	A6699101	RETURN TUBE, .5 OD X 3-1/4
10	P7037796	COMPRESSION FITTING, 1/2 TB X 3/8
11	P6071780	BALL VALVE, 3/8
12	P7037301	NIPPLE, 3/8 CLOSE
13	P7036727	PLUG, 3/8
14	P7036854	TEE, 3/8
15	P7037308	NIPPLE, 3/8 X 4
16	P7037300	NIPPLE, 3/8 SPACE
17	P7036901	UNION, 3/8
18	P7037318	NIPPLE, 3/8 X 9
19	A7016401	COUPLING BODY INSULATOR
20	PP10689	SCREW, 6-32 X 1/2
21	B6660001-C	DISCONNECT ASSEMBLY
22	B6622001	FLUROPOLYMER HOSE ASSEMBLY
23	B6622301-C	FILTER RETURN HOSE (INCLUDES 19,20,21,22)

18WKSUFM FRYER
DRAWING C1 DRAIN & RETURN

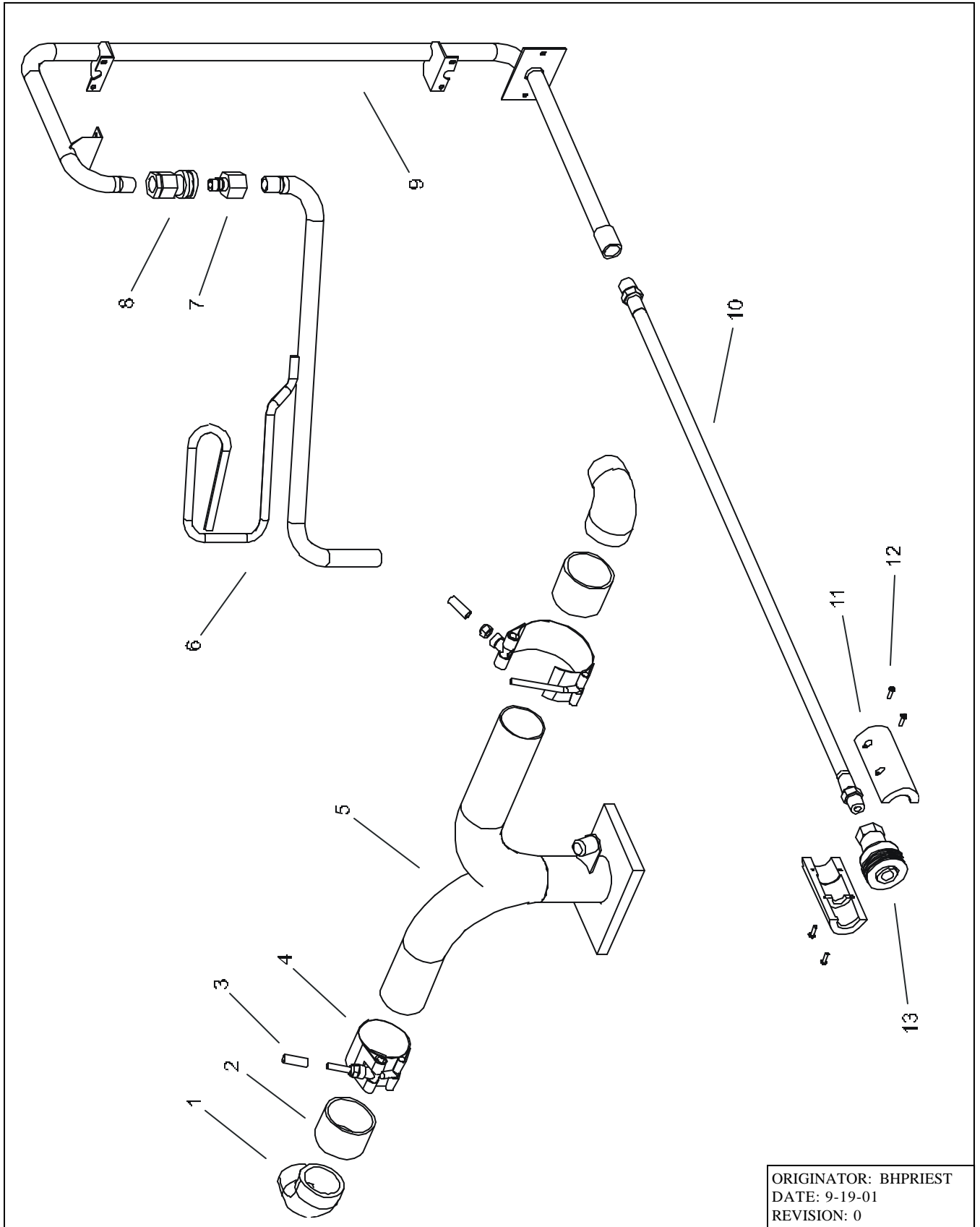


ORIGINATOR: BHPRIEST
DATE: 9-19-01
REVISION: 0

**18WKSUFM FRYER W/FILTER UPGRADE
DRAWING C2 DRAIN & RETURN PARTS LIST**

ITEM #	PART #	PART DESCRIPTION
1	A7022001	ADAPTER DRAIN ELBOW
2	PP11202	DRAIN LINE GASKET
3	PP10177	PROTECTIVE CAP
4	PP11172	BAND CLAMP
5	B6669901	DRAIN OUTLET
6	B6669801	NOZZLE
7	P6071123	NIPPLE VALVED CONNECTOR
8	P6071122	COUPLER CONNECTOR, 3/8 FEMALE
9	B6670001	RETURN PIPE
10	B6622001	FLUROPOLYMER HOSE ASSEMBLY
11	A7016401	COUPLING BODY INSULATOR
12	PP10689	SCREW, 6-32 X 1/2
13	B6660001-C	DISCONNECT ASSEMBLY
14	B6622301-C	FILTER RETURN HOSE (10,11,12,13)

18WKSUFM FRYER W/FILTER UPGRADE
DRAWING C2 DRAIN & RETURN

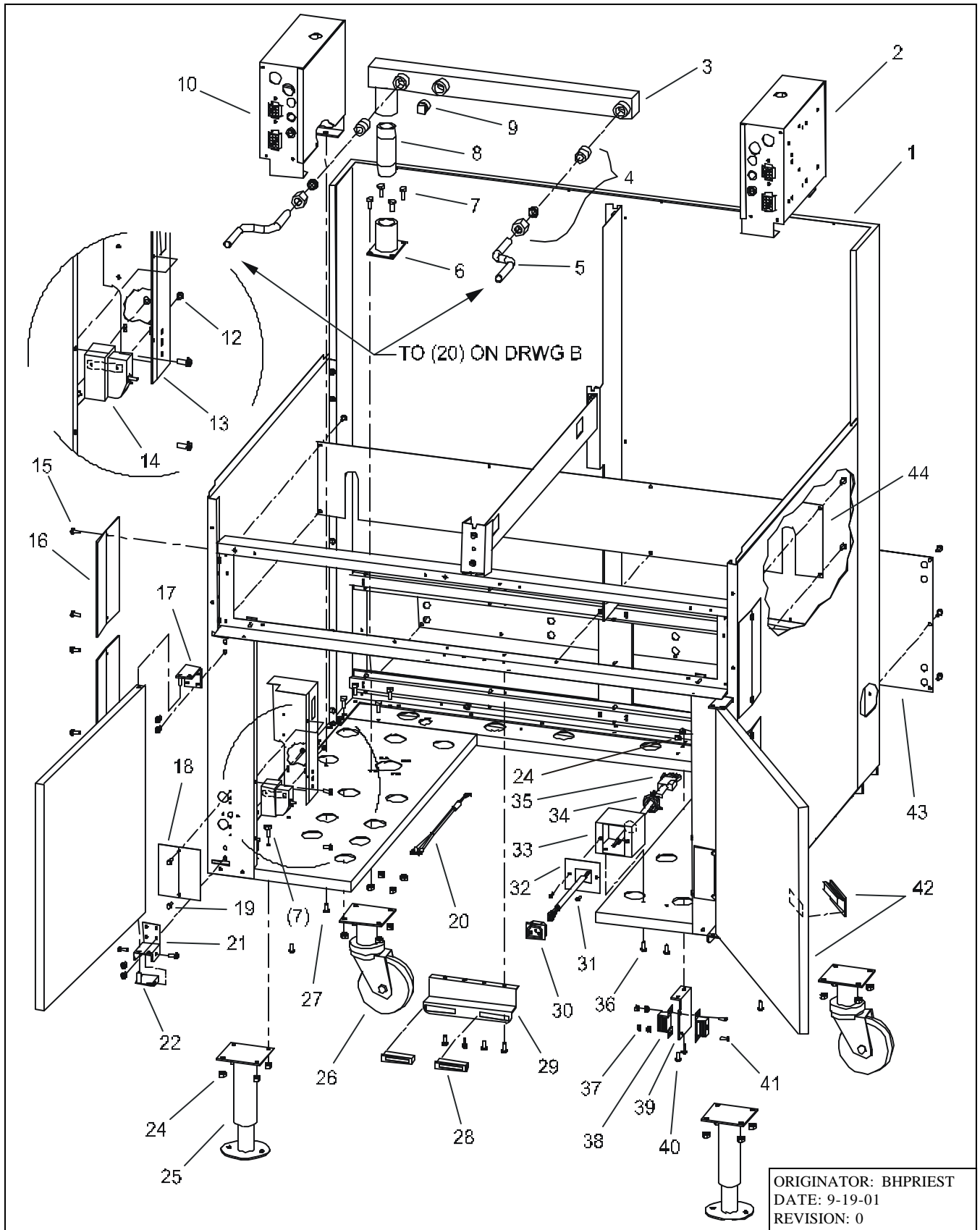


ORIGINATOR: BHPRIEST
DATE: 9-19-01
REVISION: 0

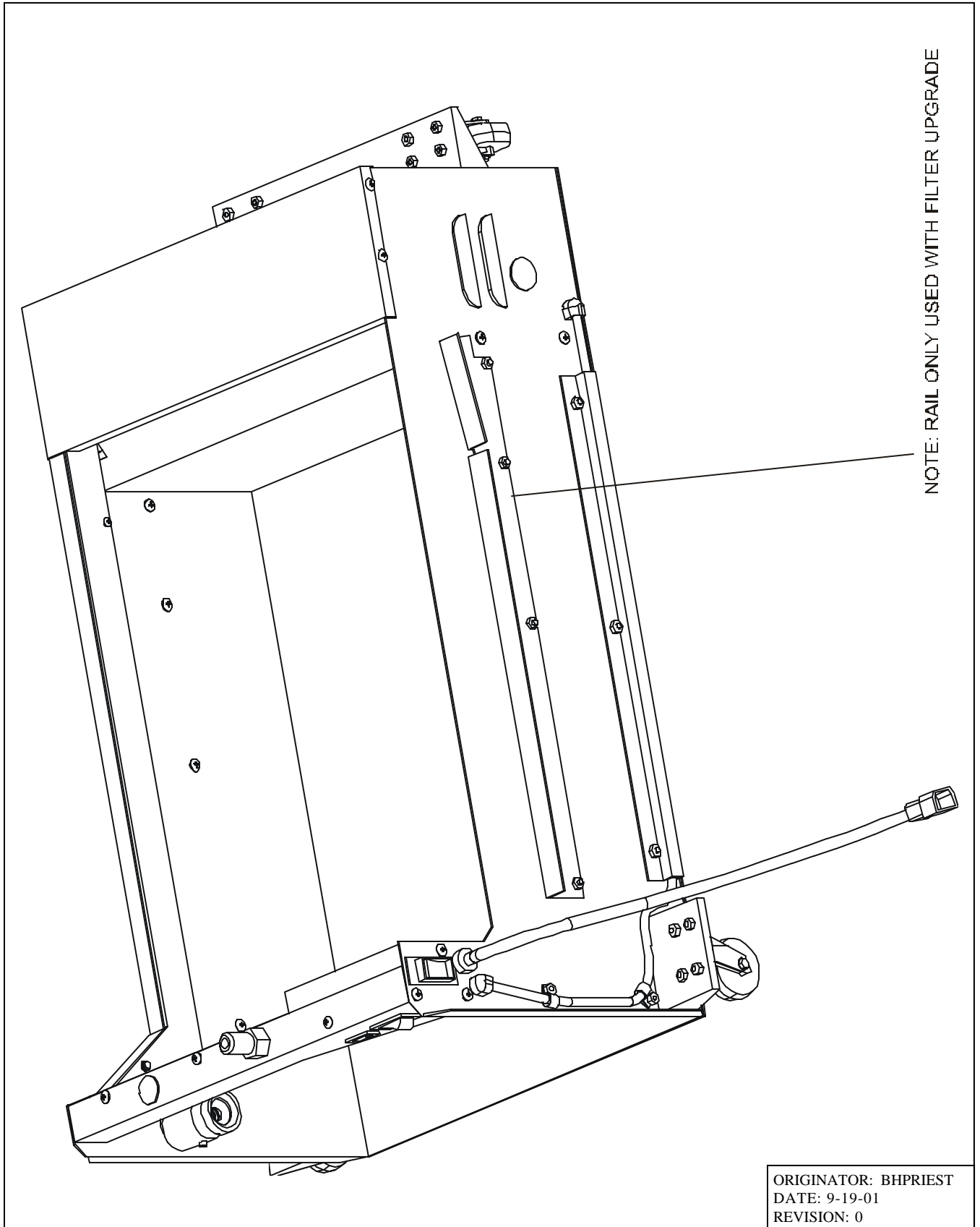
**18WKSUFM FRYER CABINET
DRAWING D PARTS LIST**

ITEM #	PART #	PART DESCRIPTION
1	B1821202	CABINET
2	B2904502	ENTRANCE BOX-RH
3	B8000401	GAS MANIFOLD
4	PP10112	CONNECTOR, MALE NPT TO TUBE
5	A8001601	GAS VALVE INLET TUBE
6	B8000801	GAS SUPPLY ADAPTER
7	P0020600	BOLT, 1/4 - 20 X 5/8
8	P7037394	NIPPLE, 1" X 3-1/2"
9	P7036729	PLUG
10	B2904501	ENTRANCE BOX-LH
12	PP10687	SCREW, 6-32 X 5/16
13	A1822303	THERMOSTAT COVER LH
	A1822301	THERMOSTAT COVER RH
14	PP10084	HIGH-LIMIT SWITCH
15	P0075400	SELF TAPPING SCREW, 10-24 X 1/2
16	A6613102	DRAIN LINE COVER
17	B3800101	DOOR HINGE, TOP LEFT
	B3800103	DOOR HINGE, TOP RIGHT
18	A1812602	T-STAT COVER
19	P0075400	SELF TAPPING SCREW, 10-24 X 1/2
20	B6779850	HI-LIMIT WIRE
21	A3804002	DOOR BOTTOM HINGE
22	B3802101	BOTTOM HINGE REINFORCEMENT-LH
	B3802102	BOTTOM HINGE REINFORCEMENT-RH
24	P0093300	KEP NUT, 1/2 - 20
25	B3900408	LEG
26	PP10810	CASTER
25 & 26	B3901502	LEG & CASTER KIT
27	PP10694	SCREW, 10-24 X 3/4
28	P6071300	MAGNETIC CATCH
29	A1841602	MAGNETIC CATCH BRACKET
30	PP11337	RECEPTACLE-250V-IEC-320
31	PP10391	SCREW, 6-32 X 3/8
32	A6669802	RECEPTACLE BOX, FRONT
33	B6607601	RECEPTACLE BOX, BODY
34	P5045240	ROMEX CLAMP
35	67710701	RECEPTACLE WIRING
36	PP10690	SCREW, 6-32 X 1/2
37	P0091100	KEP NUT, 6-32
38	P6071305	MAGNETIC CATCH
39	A6686002	MAGNET BRACKET
40	PP11366	SCREW, 10-24 X 5/8
41	PP10689	SCREW, 6-32 X 1/2
42	B2301110	DOOR
	PP11006	DOOR HANDLE
43	A1629902	BACK COVER
44	A1812401	RETAINER PLATE CABLE
45	B6701401	DOMESTIC POWER CORD (NOT SHOWN)
	B6709402	INTERNATIONAL AND CE POWER CORD (NOT SHOWN)

**18WKSUFM FRYER & FILTER UPGRADE
DRAWING D CABINET**



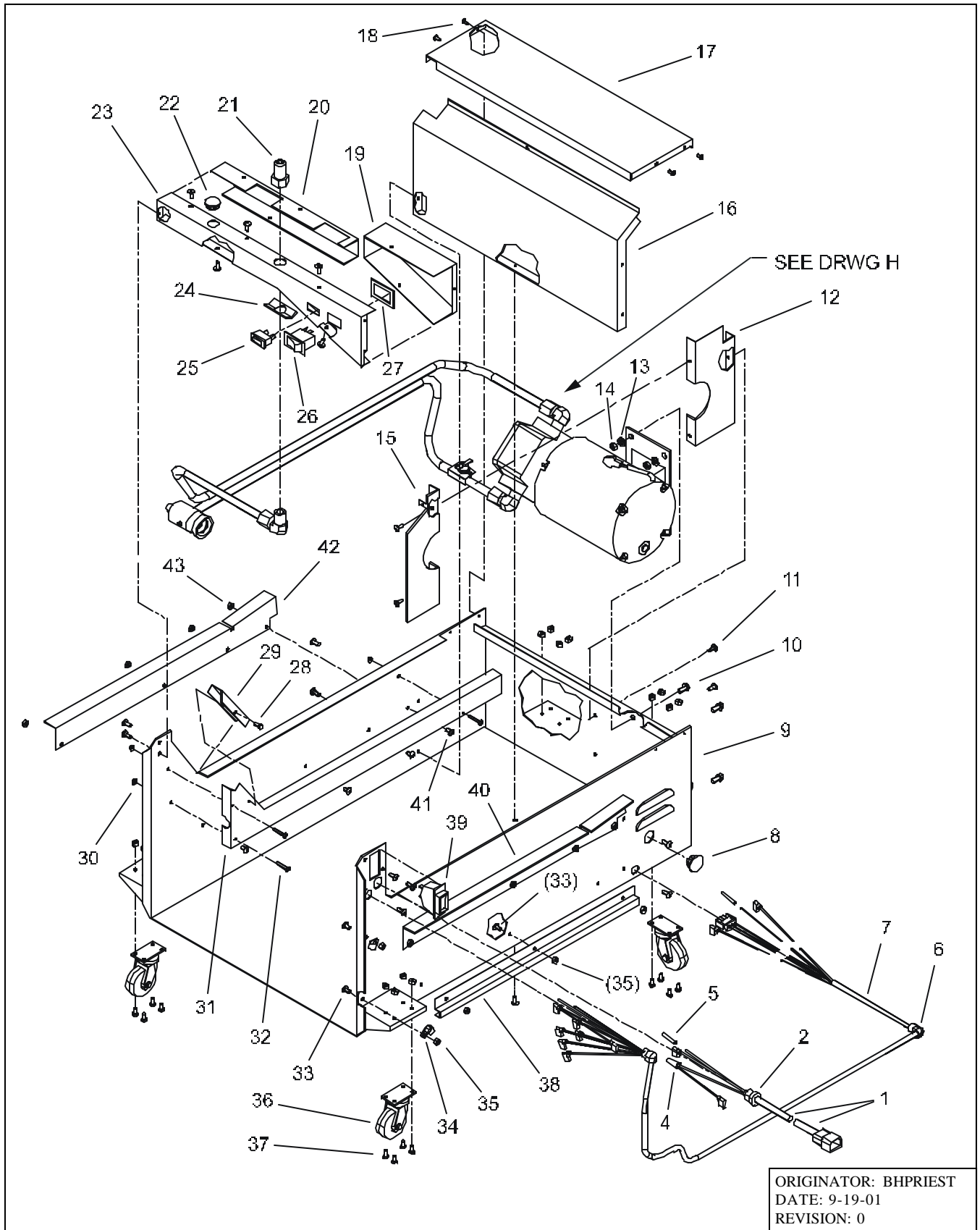
18WKSUFM FRYER & FILTER UPGRADE
DRAWING E FILTER HOUSING SHEET 1



**18WKSUFM FRYER W/FILTER UPGRADE
DRAWING E FILTER HOUSING PARTS LIST**

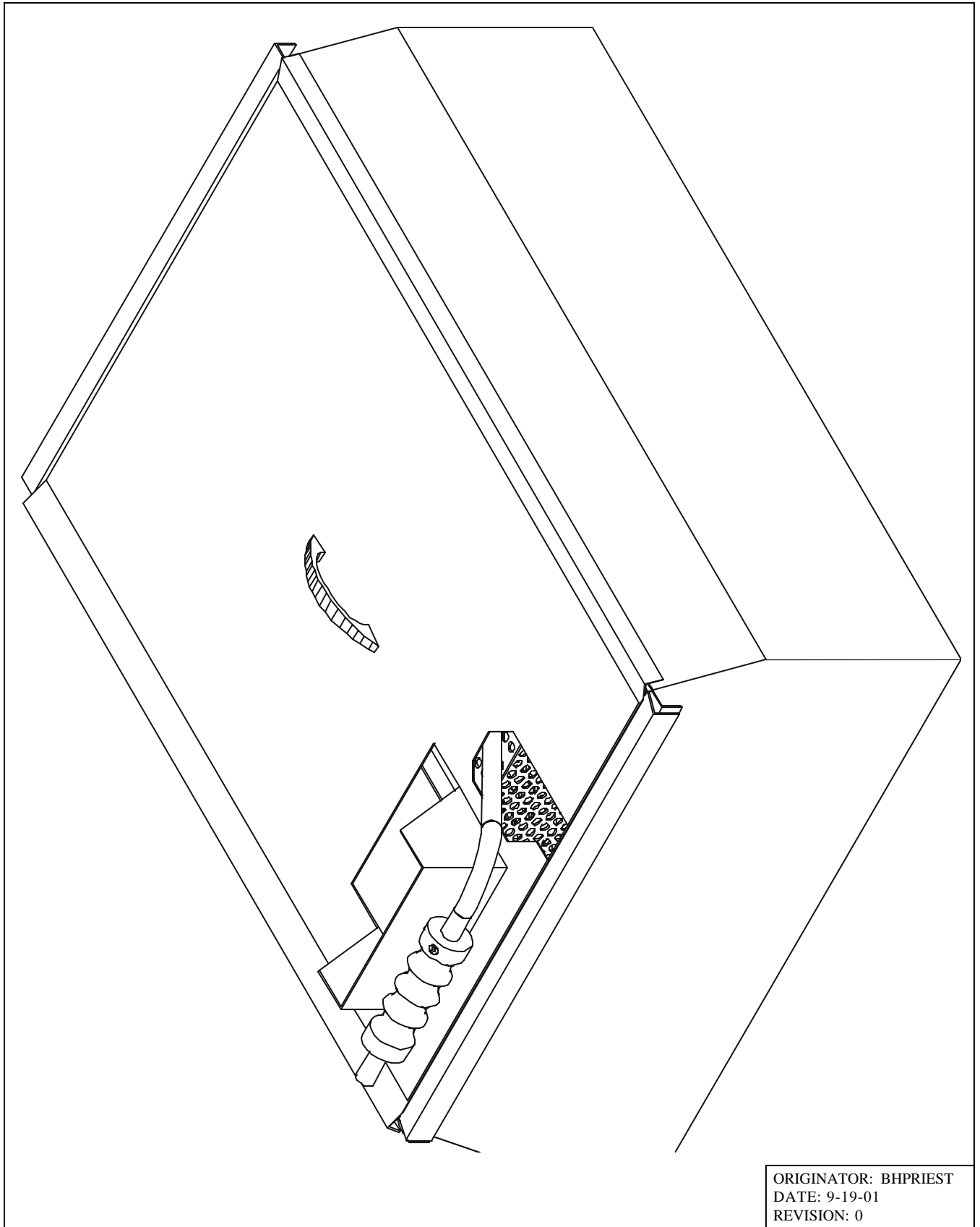
ITEM #	PART #	PART DESCRIPTION
1	B6717902	POWER CORD, IEC-320
2	PP10107	STRAIN RELIEF BUSHING
4	P5047671	WIRENUT, ORANGE
5	P5047051	BUTT SPLICE TERMINAL
6	PP10192	STRAIN RELIEF BUSHING, RIGHT ANGLE
7	B6717102	WIRING CABLE
8	P6071490	HOLE PLUG, 7/8
9	B6621103	FRAME
10	PP11261	SCREW, SERRATED HEAD, 5/16-18 X 3/4
11	PP10752	THREAD-ROLLING SCREW, 10-32 X 1/2
12	A7012501	REAR HEAT SHIELD
13	P0080750	SPLIT LOCK WASHER, 5/16
14	P0094600	JAM NUT, 5/16
15	A7012601	FRONT HEAT SHIELD
16	A7012402	REAR MOTOR COVER
17	A7012302	TOP MOTOR COVER
18	PP10687	SCREW, 6-32 X 5/16
19	A6683302	ELECTRICAL BOX
20	A6683802	TUBING GUARD CHANNEL
21	PP10741	CONNECTOR, NIPPLE VALVED PUSH, 3/8
22	P6071497	HOLE PLUG, 3/4
23	A6683102	SWITCH PANEL
24	A6686102	QUICK DISCONNECT BRACKET
25	PP10331	GREEN LAMP, 125V
	PP10736	GREEN LAMP, 250V
26	PP10735	DPST ROCKER SWITCH
27	A3662502	SWITCH PLATE, FRONT PANEL
28	P0075200	SCREW, 8-18 X 1/2
29	A6684502	TUBING CAP COVER
30	PP10935	NYLON INSERT, 6-32 NUT
31	A7012702	TUBING COVER
32	P0006300	SCREW, 6-32 X 1
33	PP10693	SCREW, 10-24 X 3/8
34	P6071071	CABLE CLAMP
35	PP10176	CENTERLOCK NUT, 10-24
36	P6071062	CASTER
37	P0011300	SCREW, INDENTED HEX HD, 10-24 X 3/8
38	A6682804	CABLE GUARD
39	PP10460	8AMP CIRCUIT BREAKER, DOMESTIC
	PP10470	4AMP CIRCUIT BREAKER, CE
*40	A7025004	RH RAIL
*41	PP10693	SCREW, 10-24 X 3/8
*42	A7025002	LH RAIL
*43	PP10176	LOCK NUT, 10-24
<i>*USED WITH FILTER UPGRADE ONLY</i>		

18WKSUFM FRYER & FILTER UPGRADE
 DRAWING E FILTER HOUSING SHEET 2



ORIGINATOR: BHPRIEST
 DATE: 9-19-01
 REVISION: 0

18WKSUFM FRYER
DRAWING F1 FILTER PAN SHEET 1

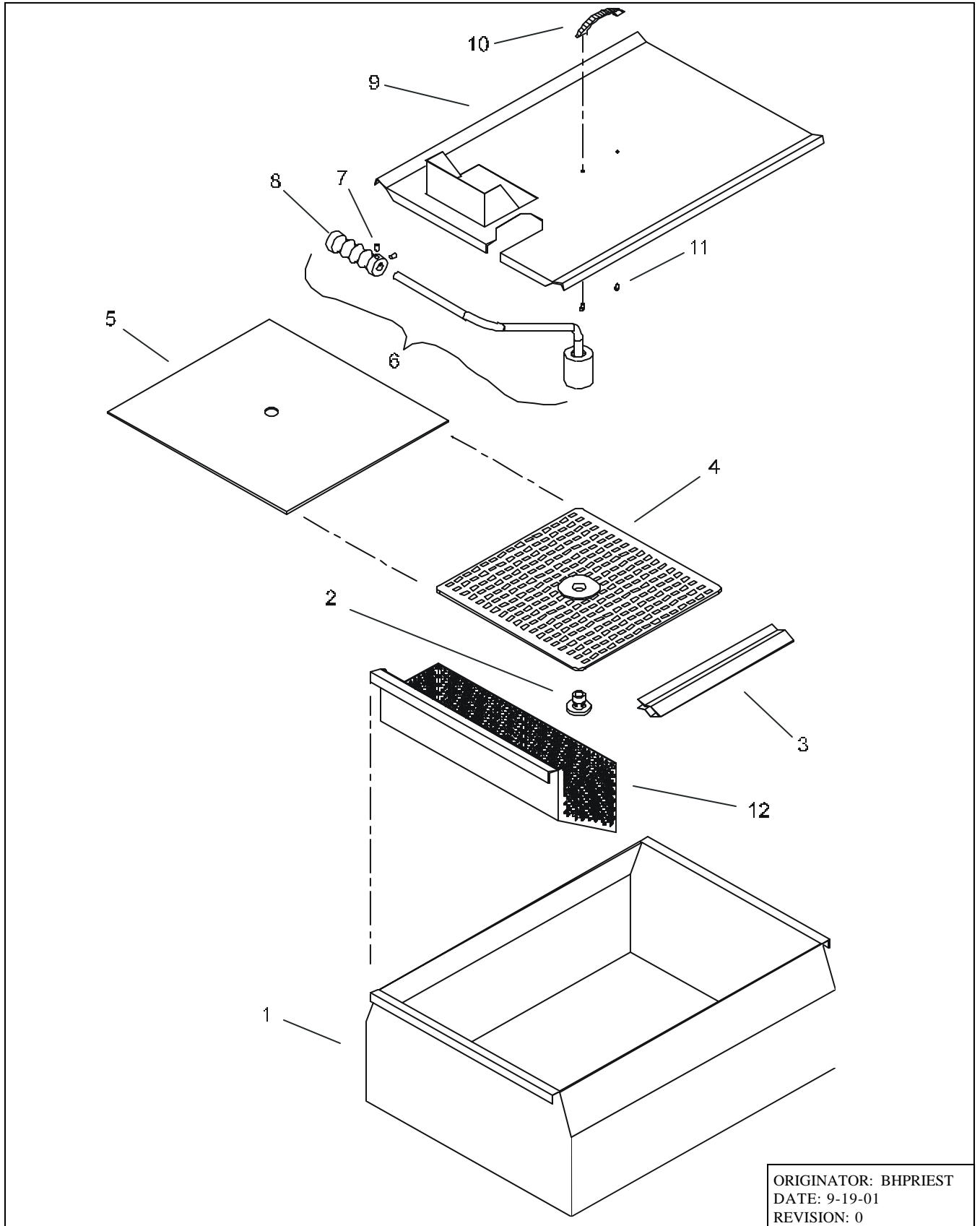


ORIGINATOR: BHPRIEST
DATE: 9-19-01
REVISION: 0

**18WKSUFM FRYER FILTER PAN
DRAWING F1 PARTS LIST**

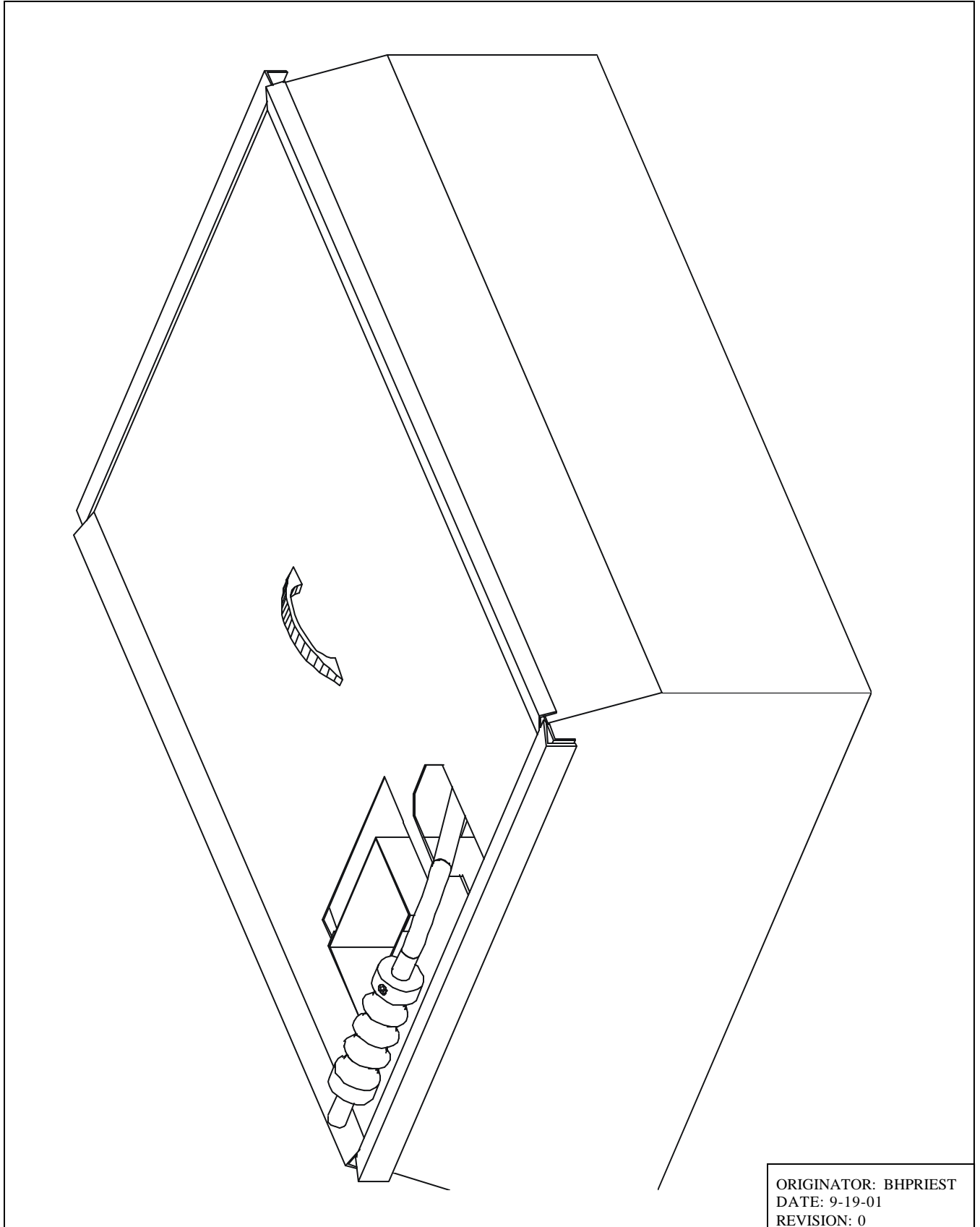
ITEM #	PART #	PART DESCRIPTION
1	B6621002	FILTER PAN
2	A6678402	BOTTOM COUPLING
3	A6674902	FILTER ENVELOPE CLIP
4	B4508901	FILTER RACK
5	A6678801	FILTER ENVELOPE
6	B6621702-C	SUCTION TUBE ASSEMBLY
7	PP10950	SET SCREW, 1/4 - 20 X 3/8
8	A6684601	INSULATOR PICK-UP
9	A6684204	PAN COVER
10	P6071516	HANDLE
11	P0007300	SCREW, 8-32 X 1/4
12	B6621201	CRUMB CATCH

18WKSUFM FRYER
DRAWING F1 FILTER PAN SHEET 2



ORIGINATOR: BHPRIEST
DATE: 9-19-01
REVISION: 0

18WKSUFM FRYER W/FILTER UPGRADE
DRAWING F2 FILTER PAN SHEET 1

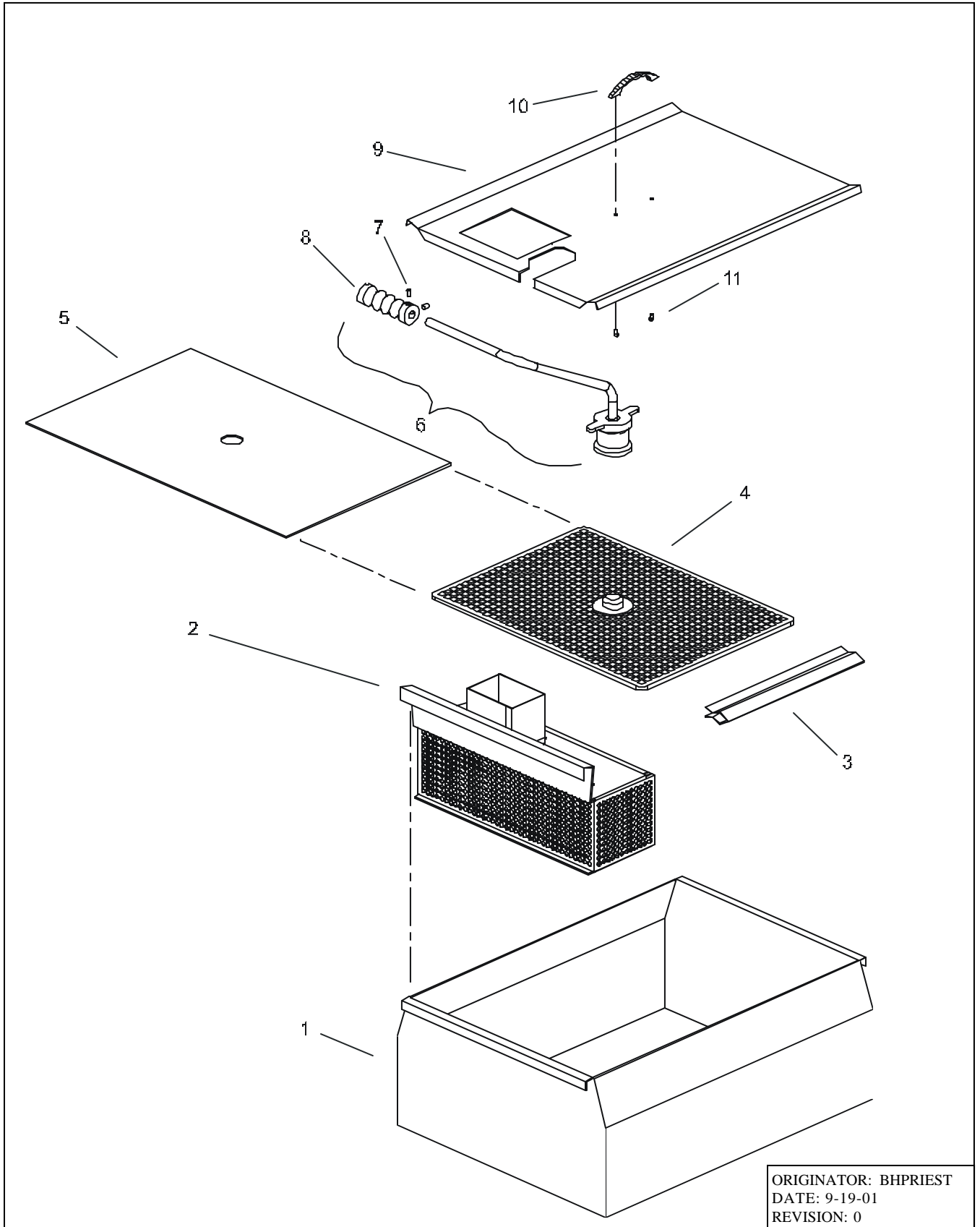


ORIGINATOR: BHPRIEST
DATE: 9-19-01
REVISION: 0

**18WKSUFM FRYER W/ FILTER UPGRADE
DRAWING F2 FILTER PAN PARTS LIST**

ITEM #	PART #	PART DESCRIPTION
1	B6621002	FILTER PAN
2	B6664201	BOTTOM COUPLING
3	A6674902	FILTER ENVELOPE CLIP
4	B6664302	FILTER RACK
5	A6678801	FILTER ENVELOPE, 14 X 15
6	B6670501	SUCTION TUBE ASSEMBLY
7	PP10950	SET SCREW, 1/4 - 20 X 3/8
8	A6684601	INSULATOR PICK-UP
9	A6684204	PAN COVER
10	P6071516	HANDLE
11	P0007300	SCREW, 8-32 X 1/4
12	B6621201	CRUMB CATCH

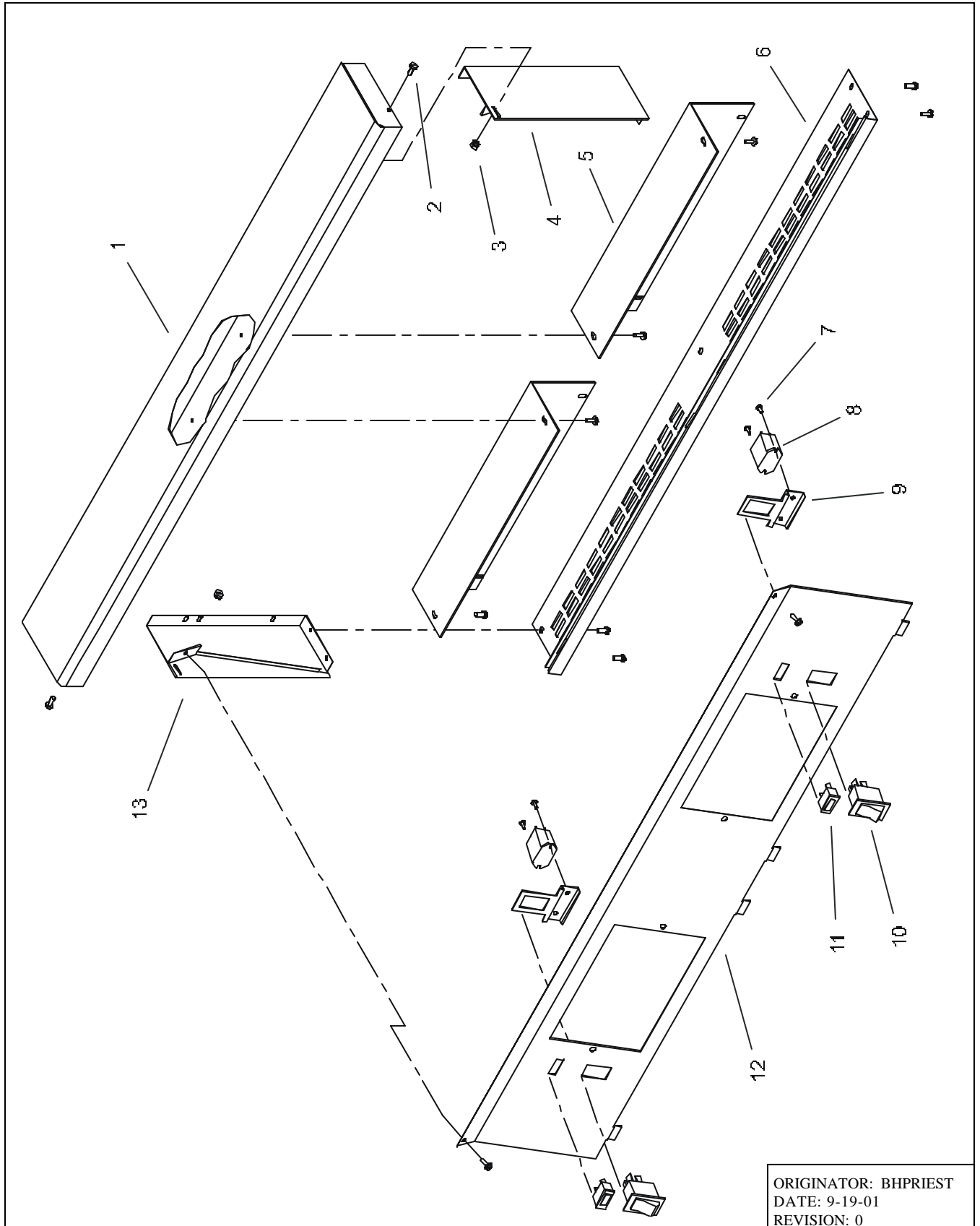
18WKSUFM FRYER W/FILTER UPGRADE
DRAWING F2 FILTER PAN SHEET 2



**18WKSUFM FRYER FRONT PANEL & TOP DECK
DRAWING G PARTS LIST**

ITEM #	PART #	PART DESCRIPTION
1	B3617204	FRONT PANEL DECK
2	P0075400	SELF TAPPING SCREW, 10-24 X 1/2
3	P0092300	KEP NUT, 10-24
4	A3641902	END CAP-RH
5	A3642305	BRACKET MOUNTING CAP
6	A3642812	BOTTOM DUAL
7	PP10687	SCREW, 6-32 X 5/16
8	PP11124	RELAY, 24V SPDT
9	A3649201	RELAY BRACKET
10	PP10093	ROCKER SWITCH, SPDT
11	PP10082	AMBER LAMP, 125V
	P5045044	AMBER LAMP, 24V
12	B3612001	BEZEL
13	A3641904	END CAP-LH

**18WKSUFMFRYER & FILTER UPGRADE
DRAWING G PANEL & TOP DECKFRONT**

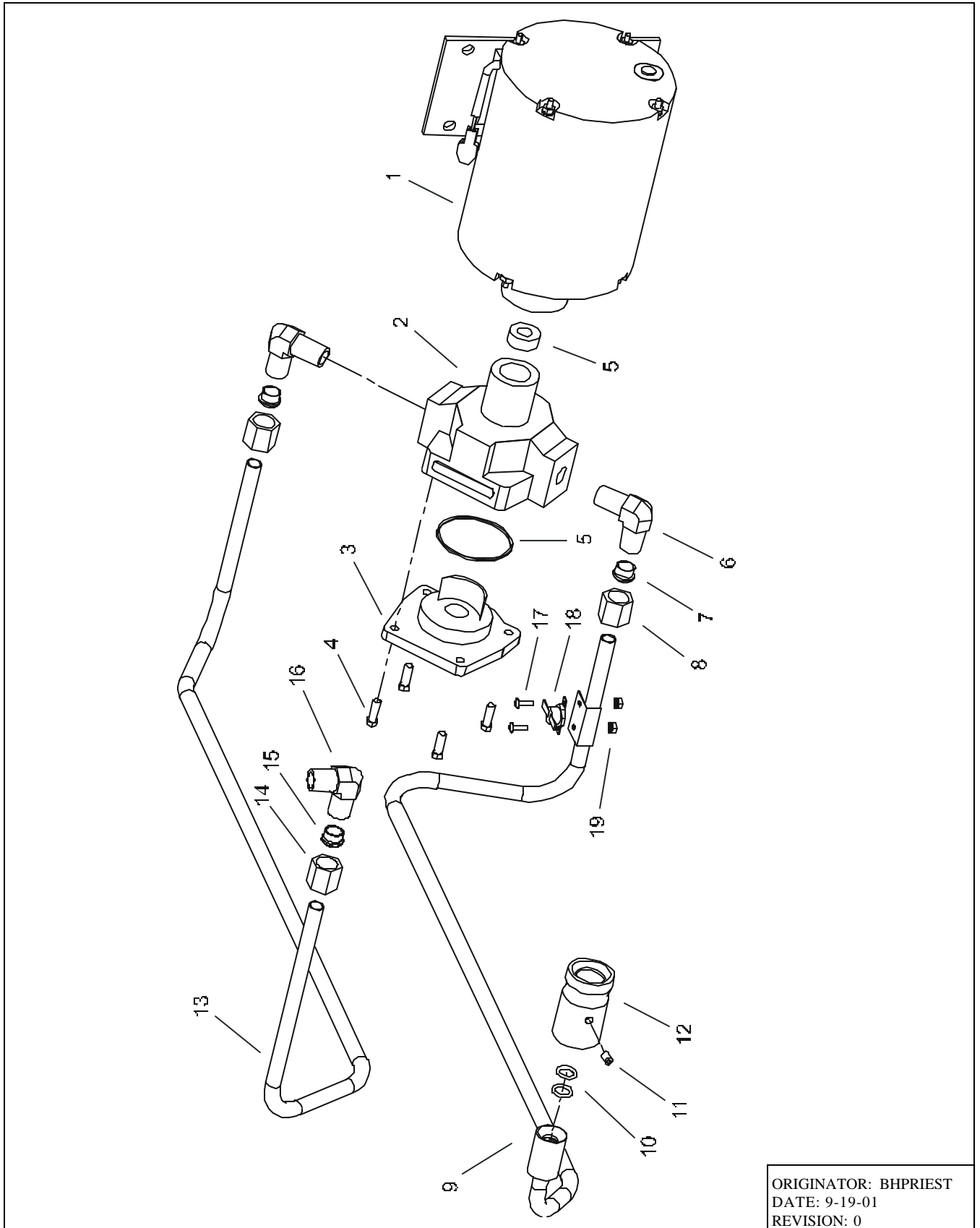


ORIGINATOR: BHPRIEST
DATE: 9-19-01
REVISION: 0

**18WKSUFM FRYER FILTER MOTOR
DRAWING H PARTS LIST**

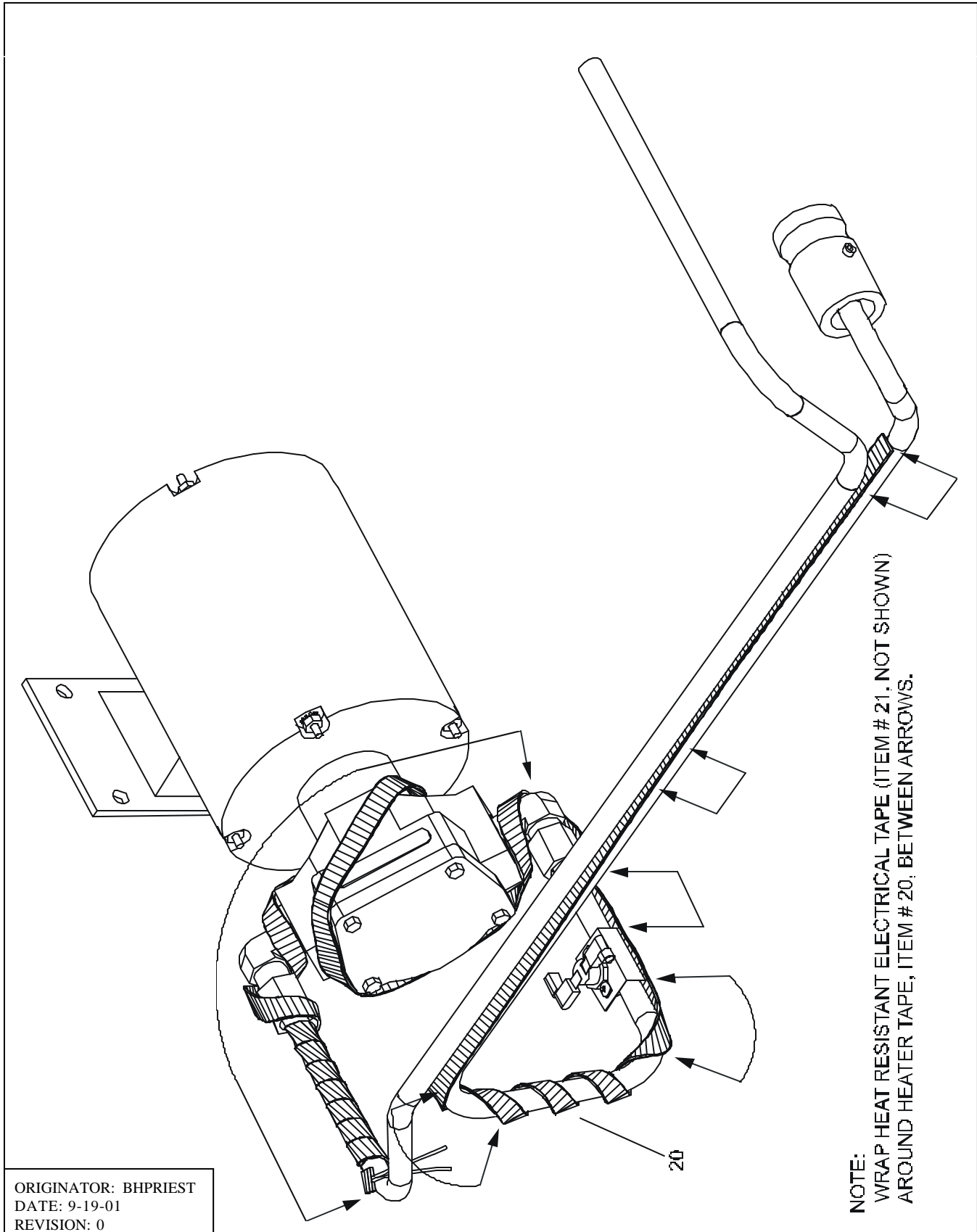
ITEM #	PART #	PART DESCRIPTION
1	PP10416	MOTOR, 115/230V
2	PP10417	PUMP
1 & 2	PP10101	PUMP & MOTOR, 115/230V
3		COVER (SUPPLIED w/ITEM 2)
4		SCREW, 1/4 - 20 X 3/4 (SUPPLIED w/ITEM 2)
5	60134901	REPLACEMENT SEAL KIT
6	PP10106	FITTING, 90° ELBOW, 1/2 X 1/2
7		FERRULE (COMES w/ITEM 6)
8		NUT (COMES w/ITEM 6)
9	B6621402	INLET TUBING
10	PP10111	SEAL, VITON O-RING
11	P0062100	SET SCREW, 1/4-20 X 3/8
12	A6685601	INSULATOR, O-RING FITTING
13	A6682704	RETURN TUBING
14		NUT (COMES w/ITEM 16)
15		FERRULE (COMES w/ITEM 16)
16	PP10731	FITTING, 90° ELBOW, 1/2 X 3/8
17	PP10690	SCREW, 6-32 X 1/2
18	PP10739	THERMOSTAT, SNAPDISK 135F° OPEN 105F°
19	P0091100	KEP NUT, 6-32
20	PP10039	HEATER TAPE, 110V
	PP10080	HEATER TAPE, 240V
21	PP10775	TAPE, ELECTRICAL HEAT-RESISTANT, 3/4
	B6623407	FILTER MOTOR ASSEMBLY

18WKSUFM FRYER & FILTER UPGRADE
DRAWING H FILTER MOTOR ASSEMBLY SHEET 1



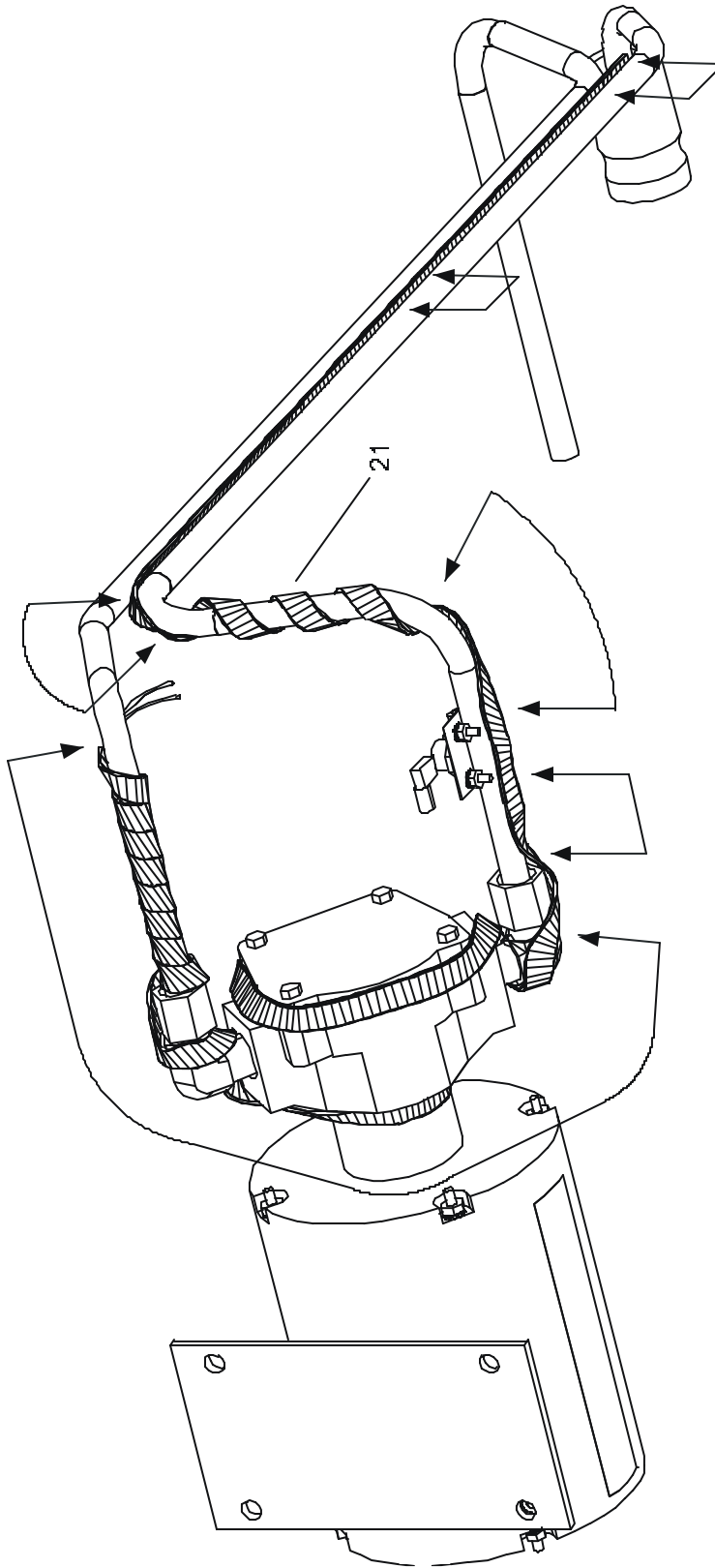
ORIGINATOR: BHPRIEST
DATE: 9-19-01
REVISION: 0

**18WKSUFM FRYER & FILTER UPGRADE
DRAWING H FILTER MOTOR ASSEMBLY SHEET 2**



ORIGINATOR: BHPRIEST
DATE: 9-19-01
REVISION: 0

18WKSUFM FRYER & FILTER UPGRADE
DRAWING H FILTER MOTOR ASSEMBLY SHEET 3



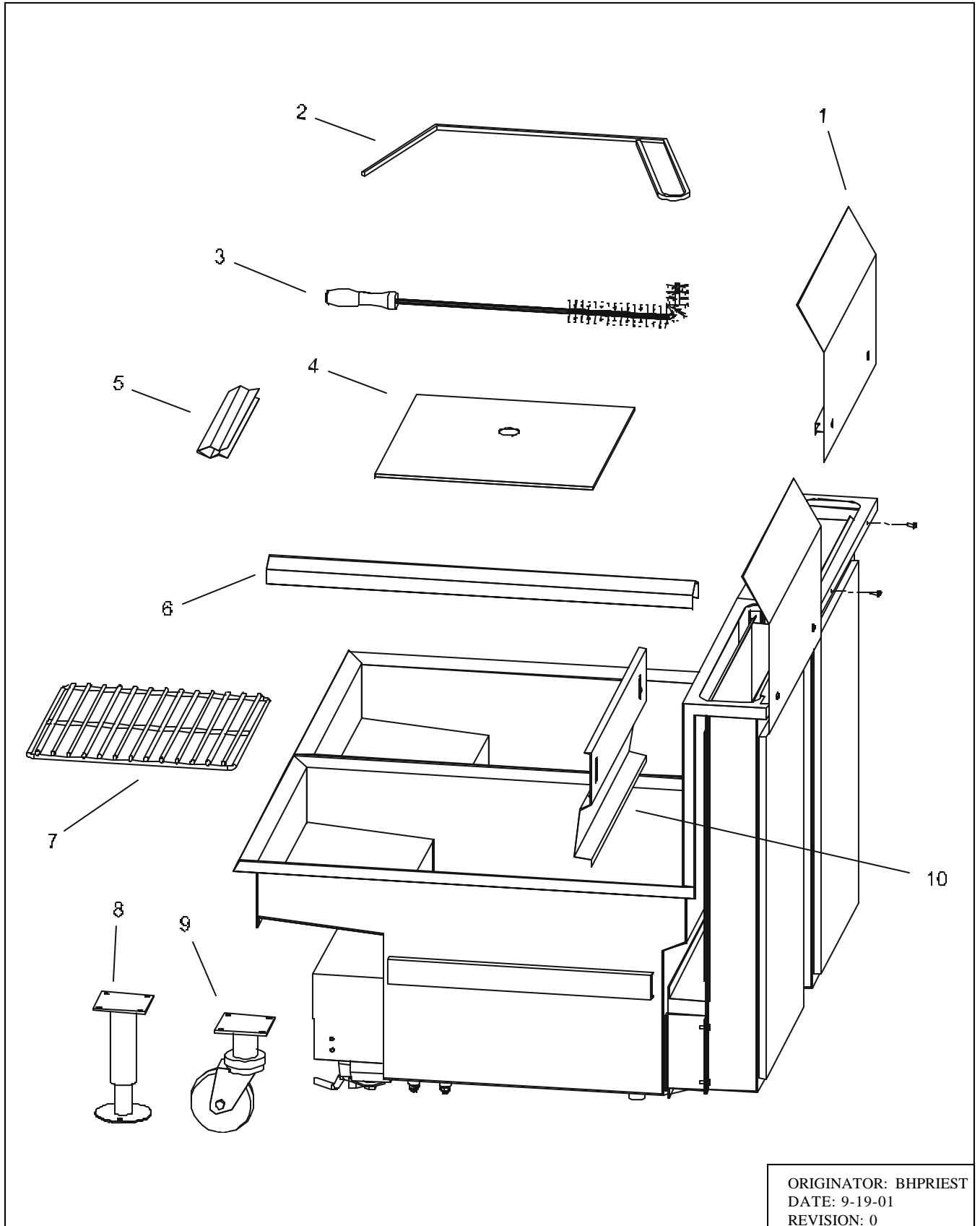
NOTE:
WRAP HEAT RESISTANT ELECTRICAL TAPE (ITEM # 21, NOT SHOWN)
AROUND HEATER TAPE, ITEM # 20, BETWEEN ARROWS.

ORIGINATOR: BHPRIEST
DATE: 9-19-01
REVISION: 0

**18WKSUFM FRYER & FILTER UPGRADE
ACCESSORIES PARTS LIST**

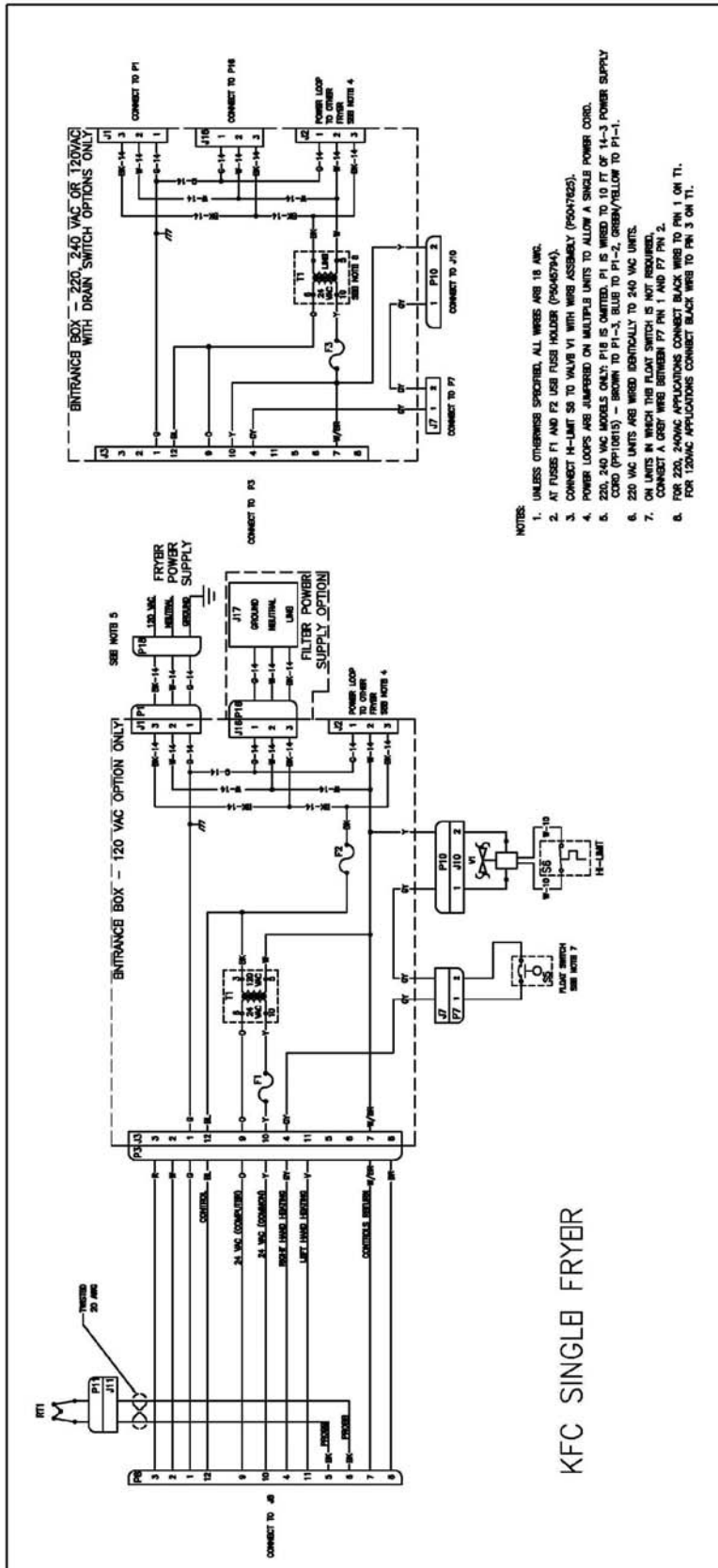
ITEM #	PART #	PART DESCRIPTION
1	A3518206	REMOVABLE FLUE HEAT SHIELD
2	A3301001	TANK CLEANOUT ROD
3	P6071409	CLEANING BRUSH
4	A6678801	FILTER ENVELOPE 14 X 15
	A7025301	FILTER ENVELOPE 14 X 22, FILTER UPGRADE
5	A6674902	FILTER ENVELOPE CLIP
6	A1900114	CHANNEL STRIP
7	P6072186	TUBE RACK
8	B3900408	LEG
9	PP10810	NON-LOCKING CASTER (B3901502CASTER KIT)
10	A1100110	BASKET HANGER

18WKSUFM FRYER & FILTER UPGRADE ACCESSORIES

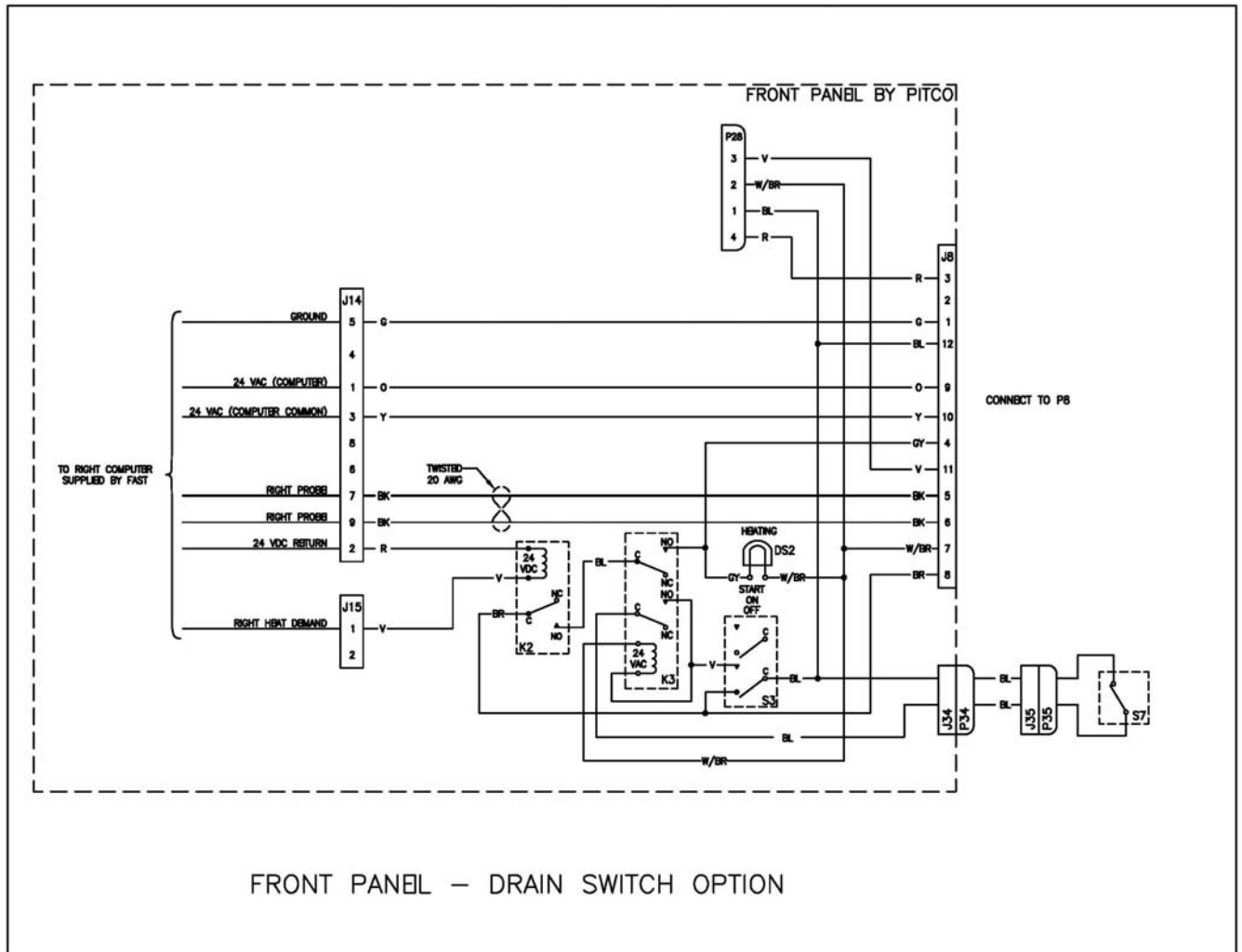


ORIGINATOR: BHPRIEST
DATE: 9-19-01
REVISION: 0

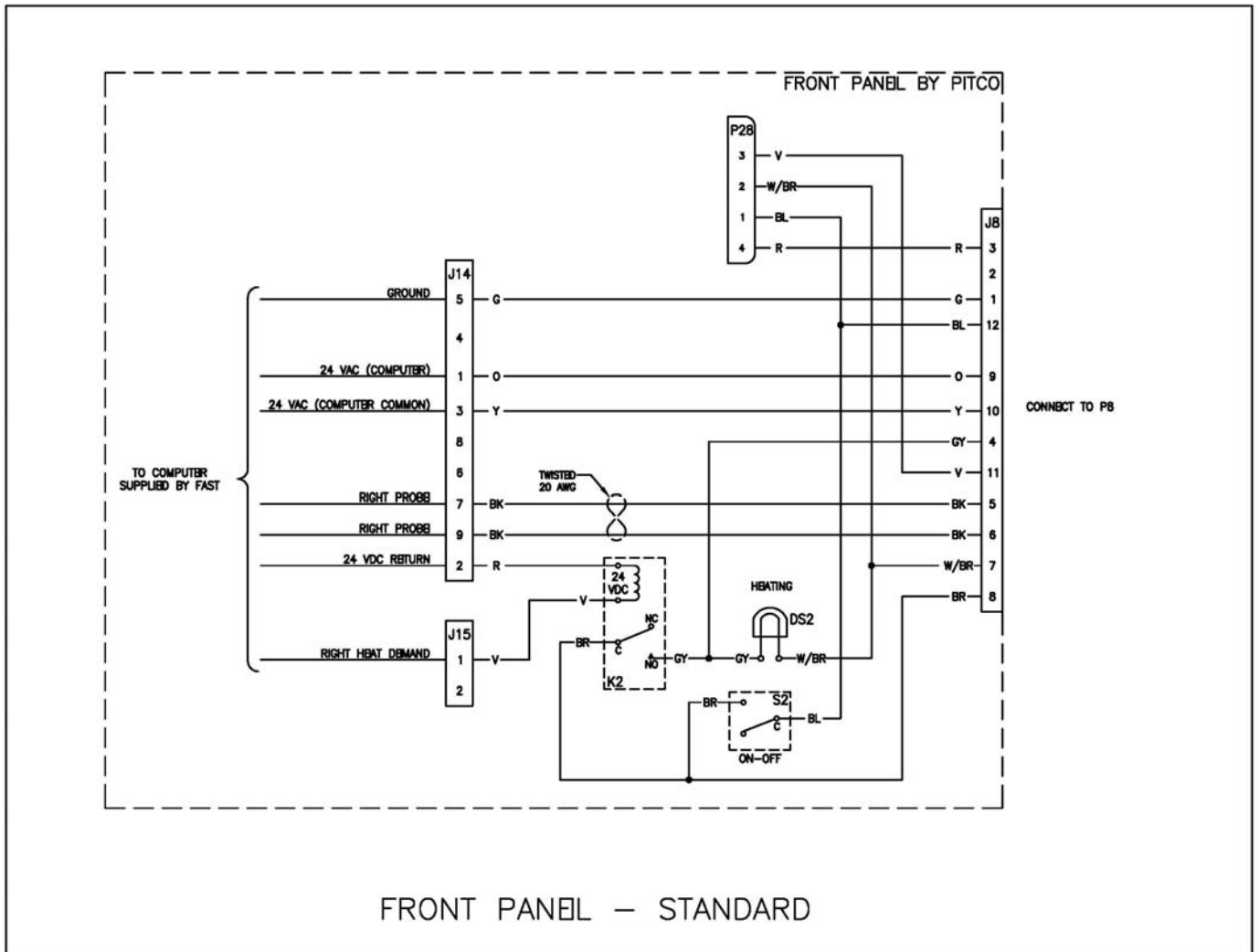
18WKSUFM FRYER & FILTER UPGRADE 700131 SCHEMATIC SHEET 1



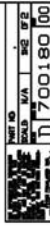
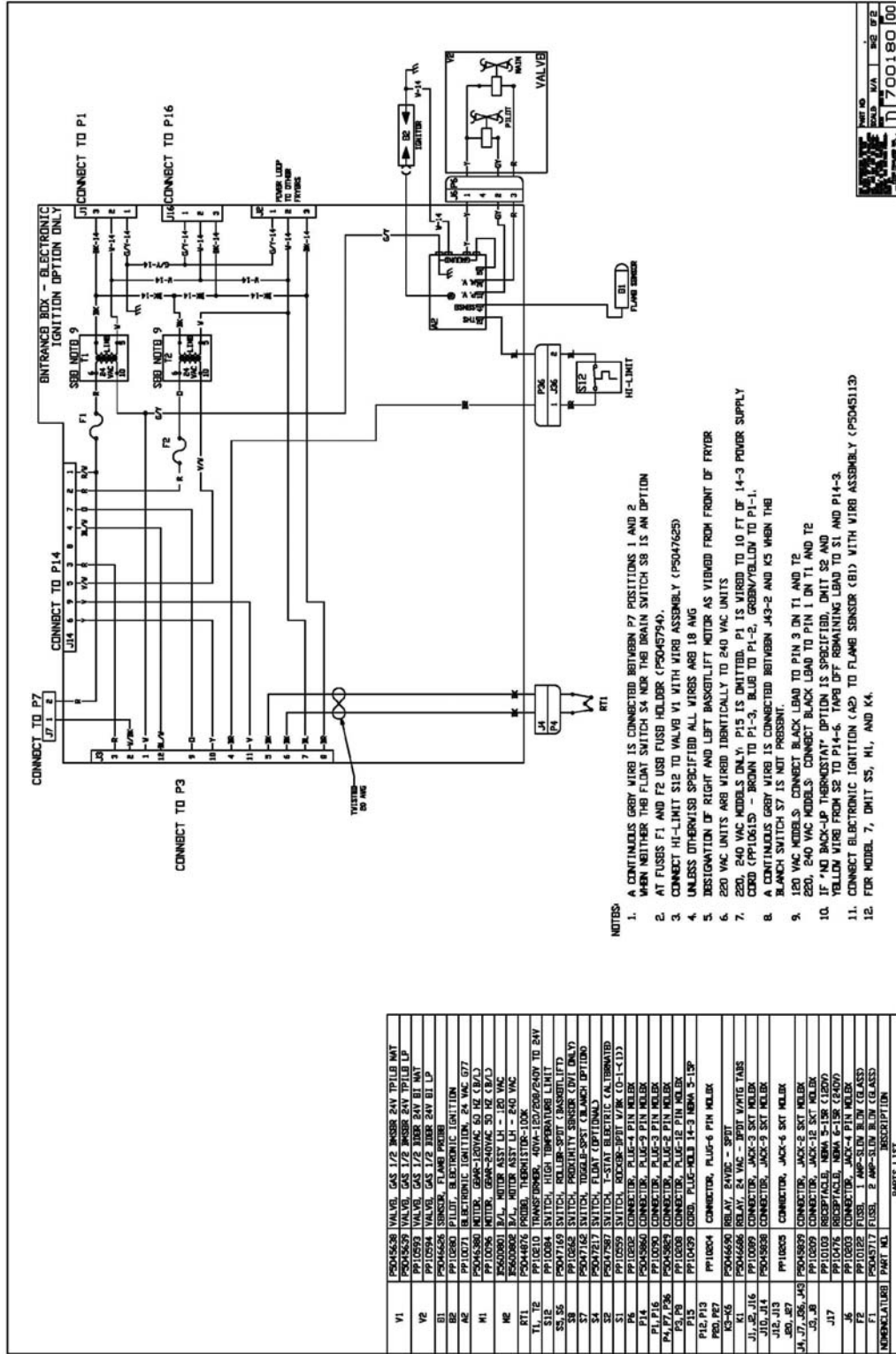
18WKSUFM FRYER & FILTER UPGRADE 700131 SCHEMATIC SHEET 2



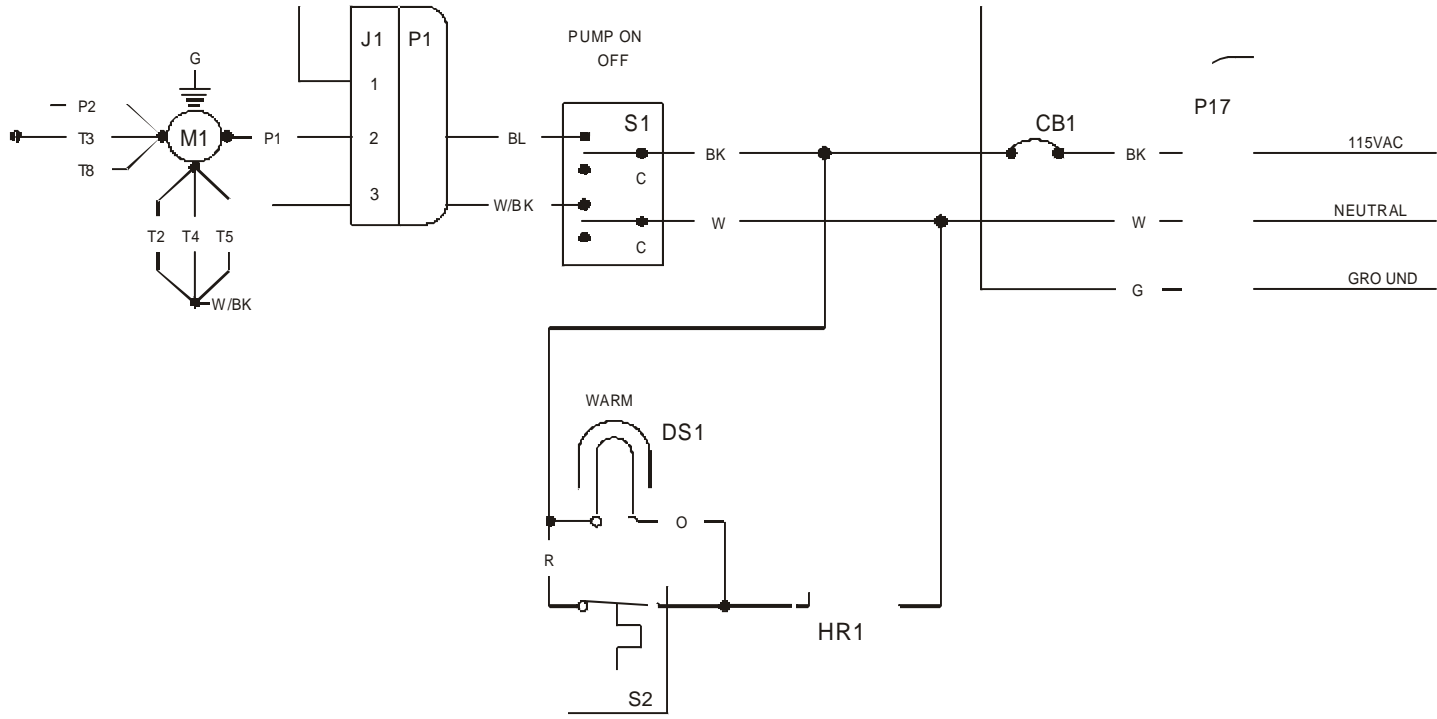
18WKSUFM FRYER & FILTER UPGRADE 700131 SCHEMATIC SHEET 3



18WKSUFM FRYER & FILTER UPGRADE 700180 E.I. SCHEMATIC SHEET 2



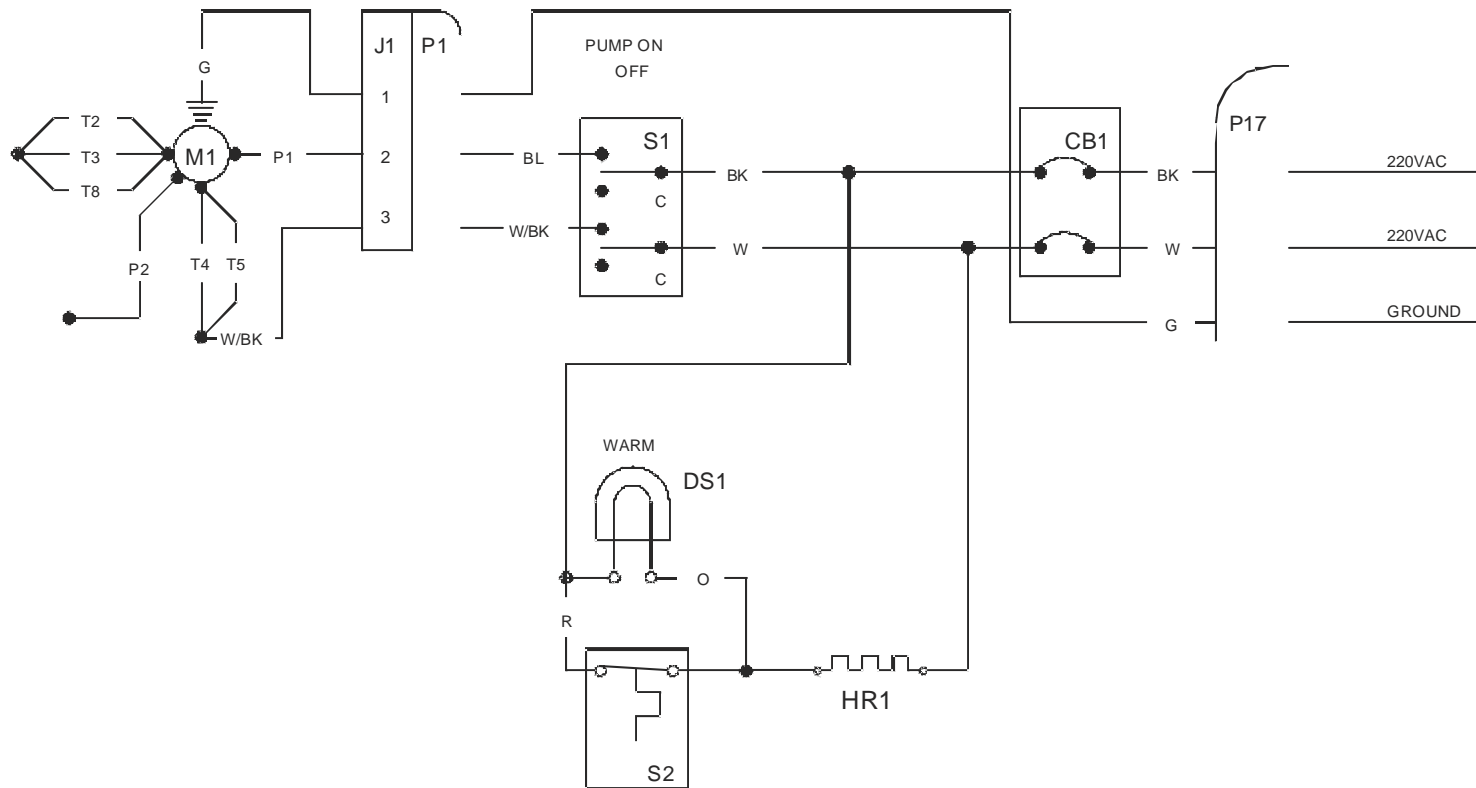
REF ID	REV	DATE	BY	CHK	APP
700180 00					



PARTS LIST

NOME NCLATURE	PART NO.	DESCRIPTION	QTY
CB1	PP10460	CIRCUIT BREAKER, 8 AMP-SINGLE POLE	1
DS1	PP10331	LAMP, 125 VAC-GREEN	1
HR1	PP10039	HEAT TAPE - 110 VAC, 165 W	1
M1	PP10101	PUMP/MOTOR ASSY, 115/230 VAC 1/3 HP	1
J1	PP10089	CONNECTOR, JACK-3 SKT MOLEX	1
P1	PP10090	CONNECTOR, PLUG-3 PIN MOLEX	1
P17	PP10609	CORD, PLUG MOLDED 16-3 NEMA 5-15P 17.5" (SF50A)	1
	PP10711	CORD, PLUG MOLDED 16-3 NEMA 5-15P 23.5" (SF65A)	1
S1	PP10735	SWITCH, ROCKER-DPST (ON-OFF)	1
S2	PP10739	SWITCH, THERMAL 135%%127F OPEN 105%%127F CLOSE	1

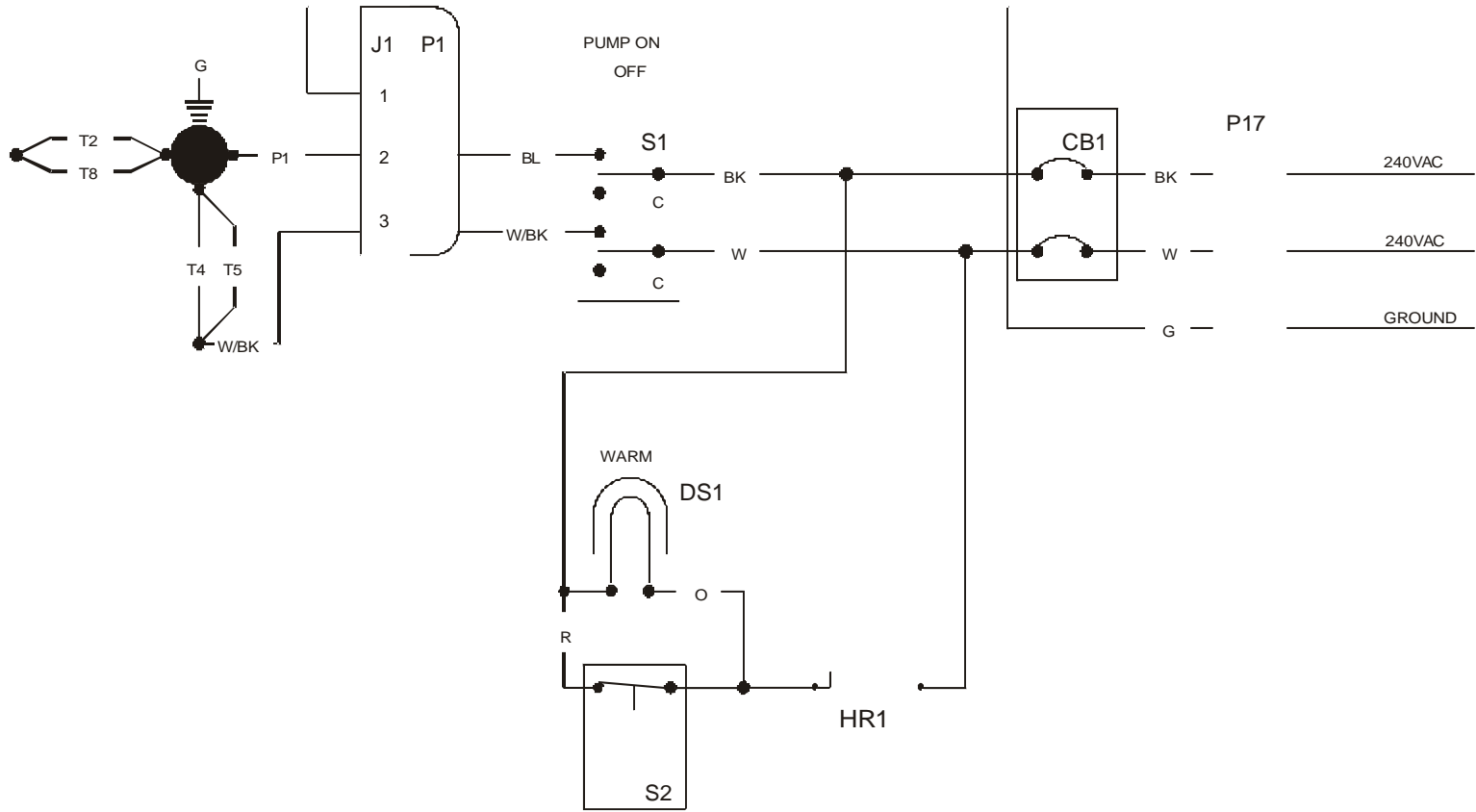
**18WKSUFM FRYER & FILTER UPGRADE
 700141 115V FILTER SCHEMATIC**



PARTS LIST

NOMENCLATURE	PART NO.	DESCRIPTION	QTY
CB1	PP10470	CIRCUIT BREAKER, 4 AMP-DOUBLE POLE	1
DS1	PP10736	LAMP, 250 VAC-GREEN	1
HR1	PP10080	HEAT TAPE - 240 VAC, 165 W	1
M1	PP10101	PUMP/MOTOR ASSY, 115/230 VAC 1/3 HP	1
J1	PP10089	CONNECTOR, JACK-3 SKT MOLEX	1
P1	PP10090	CONNECTOR, PLUG-3 PIN MOLEX	1
P17	PP10572	CORD, PLUG MOLDED 16-3 NEMA 6-15P 17.5" (SF50A)	1
	PP10710	CORD, PLUG MOLDED 16-3 NEMA 6-15P 23.5" (SF65A)	
S1	PP10735	SWITCH, ROCKER-DPST (ON-OFF)	1
S2	PP10739	SWITCH, THERMAL 135% \pm 127F OPEN 105% \pm 127F CLOSE	1

**18WKSUFM FRYER & FILTER UPGRADE
700144 220V FILTER SCHEMATIC**



PARTS LIST

NOMENCLATURE	PART NO.	DESCRIPTION	QTY
CB1	PP10470	CIRCUIT BREAKER, 4 AMP-DOUBLE POLE	1
DS1	PP10736	LAMP, 250 VAC-GREEN	1
HR1	PP10080	HEAT TAPE - 240 VAC, 165 W	1
M1	PP10171	PUMP/MOTOR ASSY, 240 VAC 50 HZ 1/3 HP	1
J1	PP10089	CONNECTOR, JACK-3 SKT MOLEX	1
P1	PP10090	CONNECTOR, PLUG-3 PIN MOLEX	1
P17	PP10572	CORD, PLUG MOLDED 16-3 NEMA 6-15P 17.5" (SF50A)	1
	PP10710	CORD, PLUG MOLDED 16-3 NEMA 6-15P 23.5" (SF65A)	1
S1	PP10735	SWITCH, ROCKER-DPST (ON-OFF)	1
S2	PP10739	SWITCH, THERMAL 135% \pm 127F OPEN 105% \pm 127F CLOSE	1

18WKSUFM FRYER & FILTER UPGRADE
700145 240V FILTER SCHEMATIC

In the event of problems with or questions about your order, please contact the Pitco Frialator factory at (603) 225-6684 Worldwide, or at our Website Address: www.pitco.com

In the event of problems with or questions about your order, please contact the Pitco Frialator Authorized Service and Parts representative (ASAP) covering your area, or contact Pitco at the number listed to the left.