

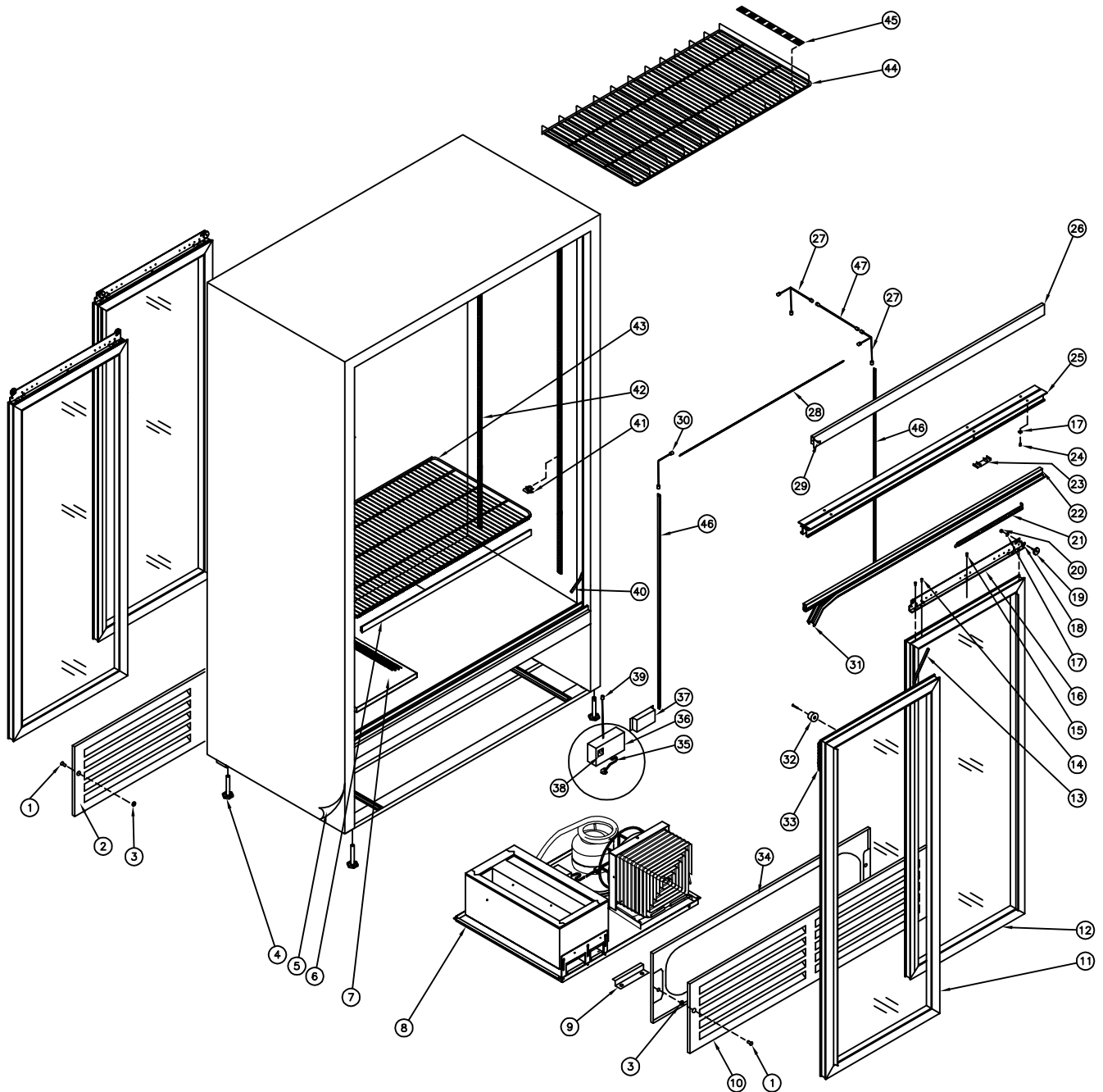
QBD[®] Cooling Systems

31 BRAMSTEELE ROAD
BRAMPTON, ONTARIO
L6W 3K6

TEL: (905) 459-0709
FAX: (905) 459-1478

COOLER : CD3354CPT-HC
84-7032-XXX

Exploded View : CD3354CPT-HC



CD3354CPT-HC Cooler

(84-7032-XXX) 120V, 60 Hz.

| Item No. | Part No. | Pepsi Part No. | Description | Item No. | Part No. | Pepsi Part No. | Description |
|----------|-----------------------------|----------------|---------------------------------------|----------|-----------------------------|----------------|---------------------------------|
| 1 | 47-0254-007 | 570904 | Screw MA #10 - 32 x 3/4 PH PAN | 25 | 47-0033-895 | | Door Track CD3360 |
| 2 | 47-9361-039 | | Grill Rear Black CD3360 | 26 | 47-8601-039 | | Cover Wheel DC3360 |
| 3 | 47-0530-639 | 154198 | Nut, Push Fastner | 27 | 47-0450-350 | 1055079 | Connector 3 Way CD3360 |
| 4 | 47-0530-089 | 510204 | Level Leg 1/2 x 3 x 1 1/2 AF | 28 | 47-0530-671 | 1027017 | LED 3 1/2" 6500K - 7000K |
| 5 | 47-9141-932 | | Decal Side CD3354 Pepsi | 29 | 47-9140-932 | | Decal Header CD3360CPT-HC Pepsi |
| 6 | 47-0130-980 | | Price Holder CD3360 31" Black | 30 | 47-0450-287 | 1031549 | Connector 4" Butt |
| 7 | 47-0033-906 | | Base Step CD3360 | 31 | 47-7359-139 | 1006617 | Seal Foam Door Horizontal 97" |
| 8 | 80-0011-511 | 1055263 | Ref. Chassis 1/3 HP CD HC R290 | 32 | 47-0120-075 | 1024709 | Door Stopper Top Sliding |
| 9 | 47-0034-734 | | Bracket Chassis Hold Down | 33 | 47-0010-182 | 1028033 | Chain Door Hook Up |
| 10 | 47-8605-039 | 1053047 | Grill Front Black CD3360 | 34 | 47-0034-702 | | Brace Cabinet Stiffener CD3360 |
| 11 | 47-7695-739 | | Door Assembly DC3360CPT RH | 35 | 18-7218-001 | 1007217 | Cord, Power 14/3 SJTW-A 12' |
| 12 | 47-7694-739 | | Door Assembly DC3360CPT LH | 36 | 47-0035-628 | | Box Power CD LED Small |
| 13 | 47-7361-039 | 69563 | Seal Foam Door Vertical | 37 | 47-0440-087 | 1029550 | Driver, LED 20W |
| 14 | 47-0400-019 | 1733442 | Screw TR 8-32 x 1/2 Slot Hex HD | 38 | 47-0440-007 | 1003097 | Outlet 3 Wire |
| 15 | 20-0468-012 | | Screw SM 8x.75 PH TR HD | 39 | 47-0450-283 | 1032170 | Connector, 12" Wire Lead |
| 16 | 47-0033-894 | | Bracket Door Mounting DC3360 | 40 | 47-7379-139 | 1008528 | Gasket Foam Vertical Cabinet |
| 17 | 53-0267-006 | 83974 | Washer 1/4 Split - Lock Zinc | 41 | 53-0377-032 | 510362 | Bracket (clip) Shelf Support |
| 18 | 53-0138-013 | 1006114 | Washer 1/4 Inter-External Lock | 42 | 47-0033-989 | 870850 | Pilaster Strip 3 3/8" |
| 19 | 47-0530-088 | 69715 | Wheel Sliding Door 1" Dia 1/4 20 | 43 | 47-0200-180 | | Shelf Standard CD3360 |
| 20 | 47-0360-036 | 1006115 | Nut 1/4 - 20 Hex 2 Way Lock Zinc | 44 | 47-0200-181 | 1053792 | Shelf Gravity, 600 ml CD3360 |
| 21 | 53-0149-076 | 1024322 | Spring Door | 45 | 47-0130-128 | 65740 | Shelf Glide DC12 Blue |
| 22 | 47-7393-939 | | Seal Holder Door CD3354/60 | 46 | 47-0530-670 | 1027016 | LED 2 1/2" 6500K - 7000K |
| 23 | 47-7386-039 | 67589 | Extrusion Track Filler .875 | 47 | 47-0450-288 | 1032427 | Connector 12" Butt |
| 24 | 47-0264-308 | 83973 | Screw MA 1/4 -20 x 3/4 PAN HD Quad | | | | |

Decals / Lens:

| | |
|-------------|----------------------------|
| 47-9140-XXX | Decal Door CD3360CPT-HC |
| 47-9141-XXX | Decal Side CD3354CPT-HC RH |
| 47-9142-XXX | Decal Side CD3354CPT-HC LH |

Accessories:

| | | |
|-----------------------------|---------|-----------------------------------|
| 47-0060-177 | 1030113 | Gasket Seal UL Ref CD 1/4 HP HC |
| 47-0130-615 | | Trim Door Handle DC3360 |
| 47-0130-616 | | Door Track Bottom CD3360 |
| 47-0520-077 | 81272 | Kit, Lock for Sliding Door |
| 47-0520-216 | 1001844 | Caster Kit - Swivel Type |
| 47-0520-245 | 1001883 | Kit, Casters Transfer - No Wheels |
| 47-0520-316 | | Kit, Electrics for NUY90NRB |
| 47-0530-240 | | Thermometer 4" |