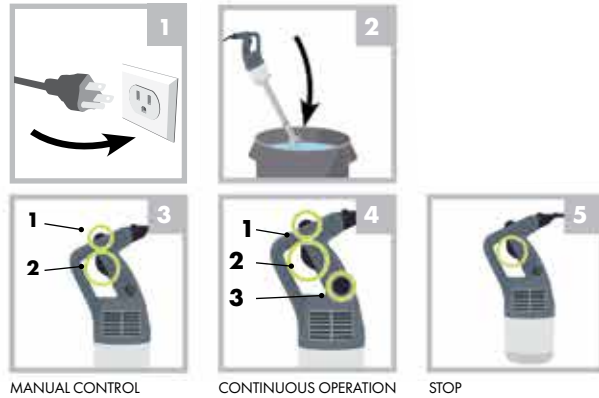




Switching on and using the mixer

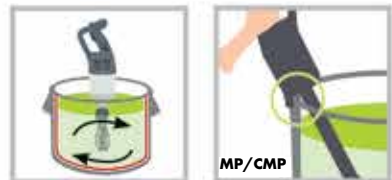
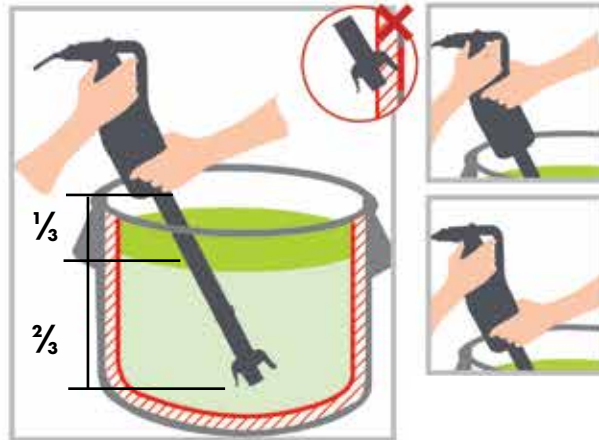
⚠ Do not use the mixer unless the blade or whisk is fully immersed



MANUAL CONTROL

CONTINUOUS OPERATION

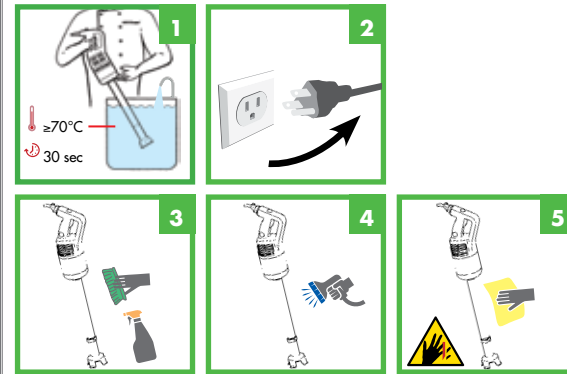
STOP



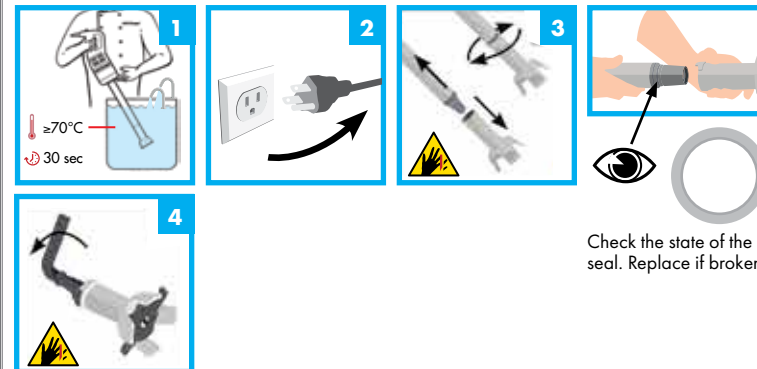
MP/CMP

Cleaning, maintenance and storage

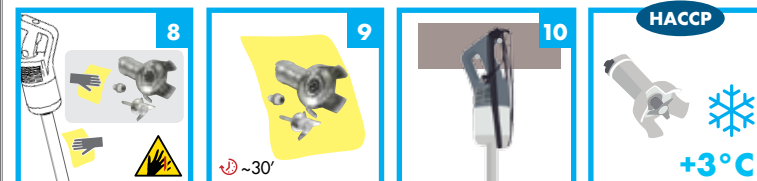
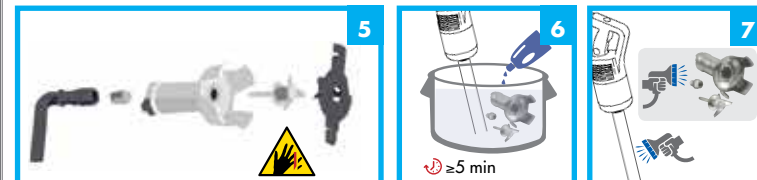
After each use



At the end of the day



Check the state of the seal. Replace if broken

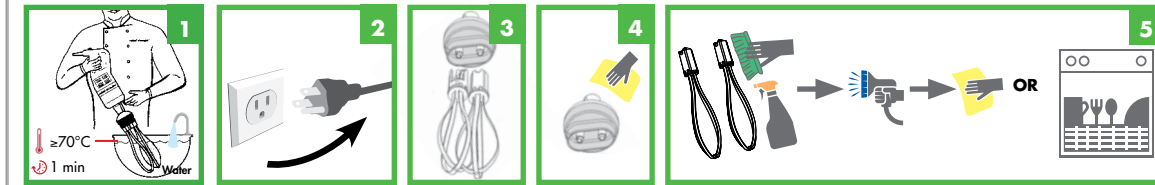


HACCP

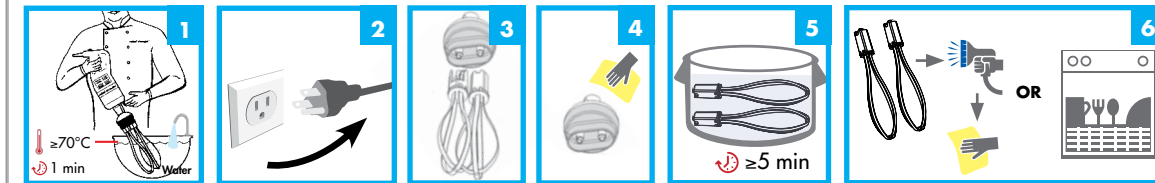
+3°C

WHISK

After each use



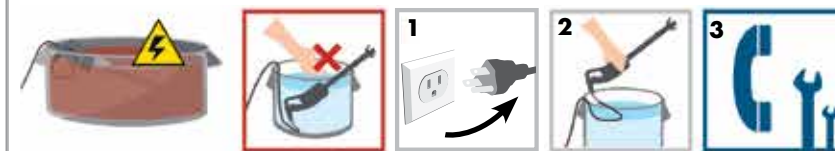
At the end of the day



Safety and Warnings



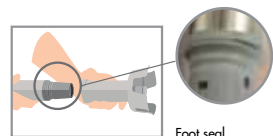
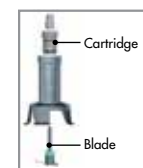
In case of immersion



⚠ Do not use the appliance after the motor unit has been immersed in liquid

MAINTENANCE

Replace the cartridge/bearing, the blade and foot seal, or sooner if required.



Foot seal