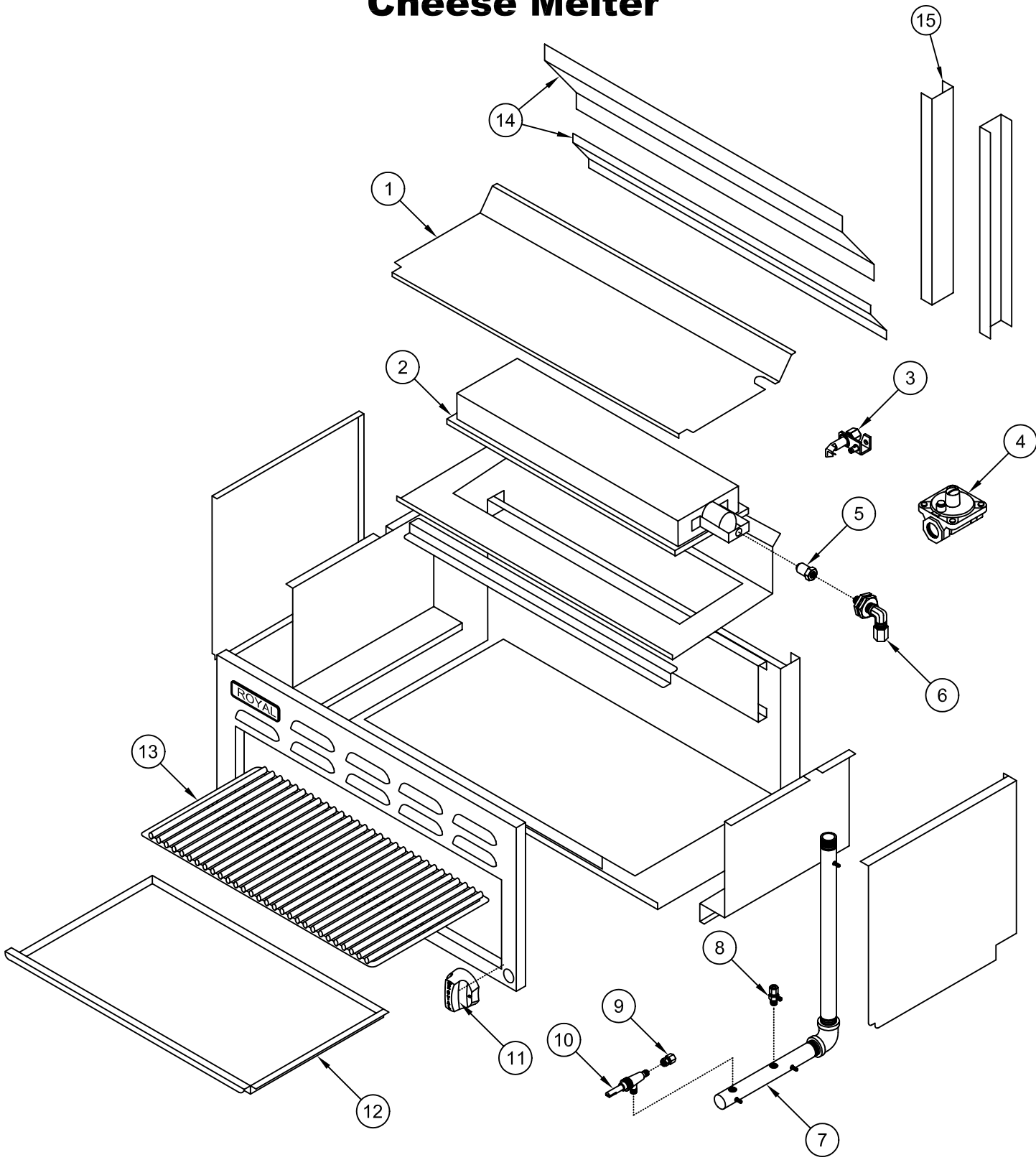
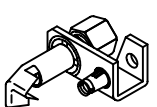
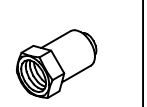

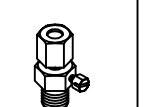
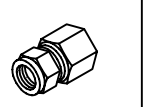
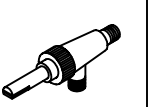



RCM Cheese Melter



| PILOT | ORIFICE HOOD | ORIFICE ELBOW | PILOT VALVE | VALVE ADAPTER | GAS VALVE | ON/OFF KNOB |
|--|---|---|---|---|--|---|
|  |  |  |  |  |  |  |
| 3 | 5 | 6 | 8 | 9 | 10 | 11 |

RCM Cheese Melter

| ITEM NO. | PART NO. | DESCRIPTION |
|----------|--|--|
| 1 | 29055 | 24" Top cover |
| | 29075 | 36" Top cover |
| | 29095 | 48" Top cover |
| | 29115 | 60" Top cover |
| | 29185 | 72" Top cover |
| 2 | 1604 | Infra-red burner – Small B-20 (RCM-24", 48", 60") |
| | 1605 | Infra-red burner – Big B-35 (RCM-36", 60", 72") |
| 3 | 1649 | Pilot burner w/bell orifice (natural gas) |
| | 1650 | Pilot burner w/bell orifice (propane gas) |
| | 1651 | #18 Pilot bell orifice only (natural gas) |
| | 1652 | #10 Pilot bell orifice only (propane gas) |
| 4 | 1618 | Gas pressure regulator (natural gas) |
| | 1619 | Gas pressure regulator (propane Gas) |
| 5 | 2007-46 1121-46 2008-55 1121-55 | Orifice spud #46 (brass) natural gas, 20,000BTU * <i>Orifice hood #46 (alternate) natural gas 20,000 BTU *</i> Orifice spud #55 (brass) natural gas, 20,000 BTU * <i>Orifice hood #55 (alternate) propane gas, 20,000 BTU *</i> * Please verify which construction is applicable for your burner type. |
| | 2009-39 1121-39 2010-52 1122-52 | Orifice spud #39 (brass) natural gas, 30,000 BTU * Orifice hood # 39 (alternate) natural gas, 30,000 BTU * Orifice spud #52 (brass) propane gas, 30,000 BTU * Orifice hood #52 (alternate) propane gas, 30,000 BTU * * Please verify which construction is applicable for your burner type. |
| 6 | 1213 | 90° Orifice elbow, rectangular (brass) |
| | 1508 | 3/8" CC x 3/8-27 Orifice elbow (brass) |
| 7 | 1620 | Manifold pipe assembly (right side gas inlet) |
| | 1665 | Manifold pipe assembly (left side complimentary assembly) |
| 8 | 1120 | 1/8" NPT x 3/16" CC Adjustable single pilot valve (brass) |
| 9 | 1627 | 3/8-27 x 3/8" CC Adapter |
| 10 | 1628 | Gas valve (brass) w/out orifice |
| 11 | 3102 | Blue knob – flat side down |
| 12 | 29143 | 24" Crumb tray |
| | 29153 | 36" Crumb tray |
| | 29163 | 48" Crumb tray |
| | 29173 | 60" Crumb tray |
| | 29183 | 72" Crumb tray |

| | | |
|----|---|--|
| 13 | 2029 2030 2031 2032 2033 | 24" Chrome rack 36" Chrome rack 48" Chrome rack 60" Chrome rack 72" Chrome rack |
| 14 | 29064 29084 29104 29124 29126 | 24" Wall mount kit 36" Wall mount kit 48" Wall mount kit 60" Wall mount kit 72" Wall mount kit |
| 15 | 29134 | Range mount kit (please specify model # of the RCM & model # of the range) |