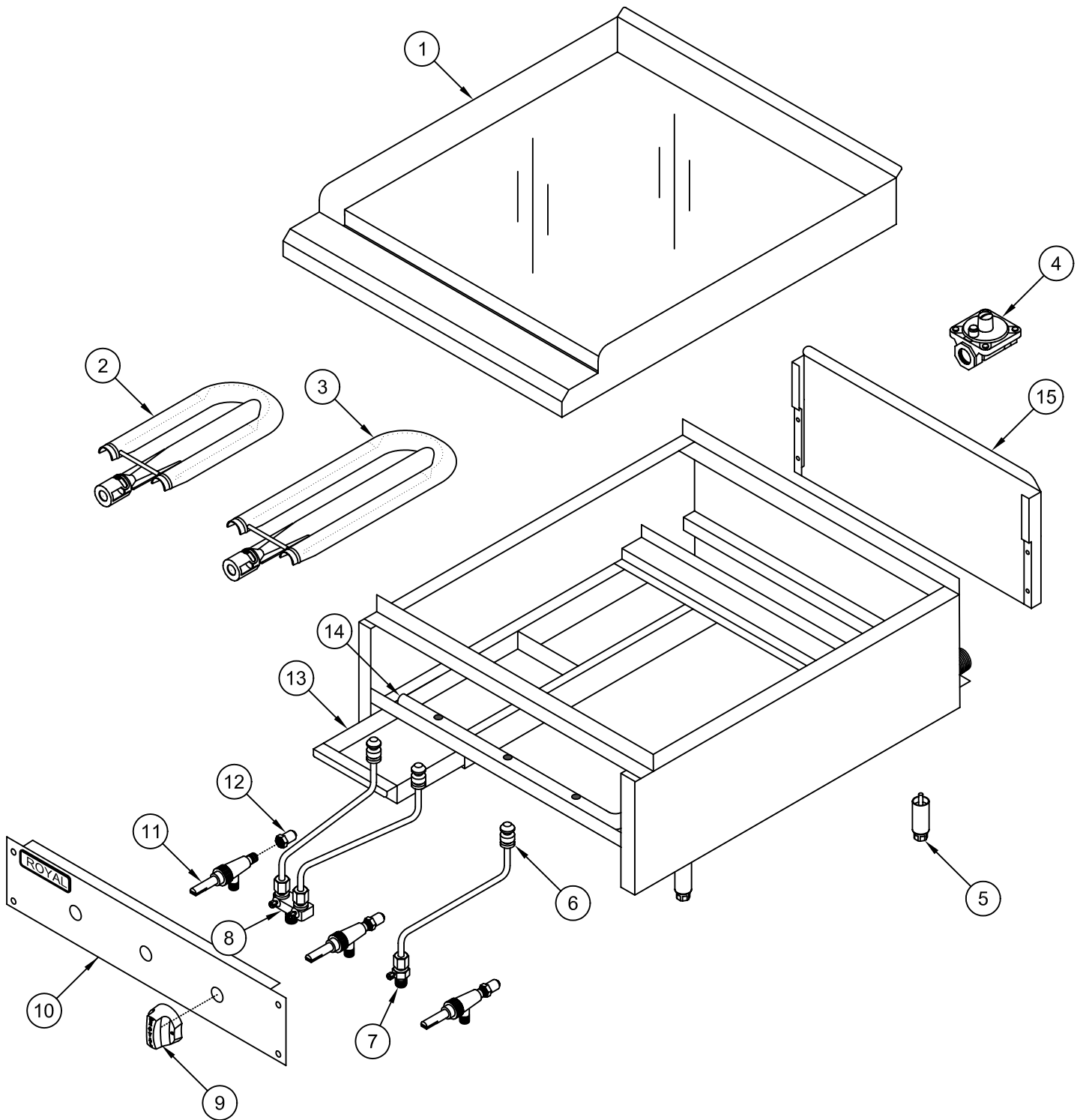
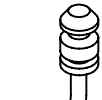

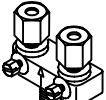

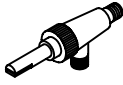
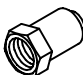


# RMG & RSMG Manual Griddle



PILOT TIP ASSY	SINGLE PILOT	DUAL PILOT VALVE	ON/OFF KNOB	GAS VALVE	ORIFICE HOOD
					
6	7	8	9	11	12

# RMG & RSMG

## Manual Griddle

ITEM NO.	PART NO.	DESCRIPTION
1	31052	24" Griddle plate assy. (for RMG-24 with 3/4" thick plate)
	31053	36" Griddle plate assy. (for RMG-36 with 3/4" thick plate)
	31054	48" Griddle plate assy. (for RMG-48 with 3/4" thick plate)
	31055	60" Griddle plate assy. (for RMG-60 with 1" thick plate)
	31056	72" Griddle plate assy. (for RMG-72 with 1" thick plate)
	31058	18" Griddle plate assy. (for RSMG – 18 with 3/4" thick plate)
	31059	24" Griddle plate assy. (for RSMG – 24 with 3/4" thick plate)
	31060	36" Griddle plate assy. (for RSMG – 36 with 3/4" thick plate)
2	2610	RSMG / RSTG Burner
3	2611	RMG / RTG Burner
4	1618	Gas pressure regulator (natural gas)
	1619	Gas pressure regulator (propane Gas)
5	3604	4" Adjustable leg
6	1436	Pilot tip assembly (RMG / RSMG)
7	1120	1/8" NPT x 3/16" CC Adjustable single pilot valve (brass)
8	1211	1/8" NPT x 3/16" CC Adjustable double pilot valve (brass)
9	3102	Blue knob – flat side down
10	30945	RMG/RSMG-24 Valve cover
	30965	RMG/RSMG-36 Valve cover
	30975	RMG/RSMG-48 Valve cover
	30985	RMG/RSMG-60 Valve cover
	30995	RMG/RSMG-72 Valve cover
11	1628	Gas valve (brass) w/out orifice
12	1121-39	Orifice hood # 39 (brass) natural gas (RMG), 30,000 BTU
	1122-52	Orifice hood # 52 (brass) propane gas (RMG), 30,000 BTU
	1121-46	Orifice hood # 46 (brass) natural gas (RSMG), 20,000 BTU
	1122-55	Orifice hood # 55 (brass) propane gas (RSMG), 20,000 BTU
13	31000	Grease can assy.

14	<a href="#">1024</a> <a href="#">1025</a> <a href="#">1026</a> <a href="#">1027</a> <a href="#">1028</a> <a href="#">1029</a> <a href="#">1030</a> <a href="#">1031</a> <a href="#">1032</a> <a href="#">1033</a> <a href="#">1034</a> <a href="#">1035</a> <a href="#">1036</a>	12 Manifold pipe for RMG 18 Manifold pipe for RMG 24 Manifold pipe for RMG 36 Manifold pipe for RMG 48 Manifold pipe for RMG 60 Manifold pipe for RMG 72 Manifold pipe for RMG 12 Manifold pipe for RSMG 18 Manifold pipe for RSMG 24 Manifold pipe for RSMG 36 Manifold pipe for RSMG 48 Manifold pipe for RSMG 60 Manifold pipe for RSMG
15	<a href="#">30923</a> <a href="#">30933</a> <a href="#">30943</a> <a href="#">30953</a> <a href="#">30963</a> <a href="#">30973</a> <a href="#">30983</a> <a href="#">30993</a>	12" Flue back 18" Flue back 24" Flue back 30" Flue back 36" Flue back 48" Flue back 60" Flue back 72" Flue back