



GAS ROTISSERIE

GRANDES FLAMMES MILLENIUM RANGE

GrandFlame GF

Ref.: 1675.8x

| | | |
|-----------------|----------------|----------------|
| 1375.12x | 1375.8x | 1375.6x |
| 1375.5x | 1375.4x | 1375.2x |
| 975.8x | 975.6x | 975.5x |
| 975.4x | 975.2x | |

INSTALLERS MANUAL

1. PRESENTATION OF THE UNIT

1.1. GENERAL

Rotisserie range " Grandes Flammes MILLENIUM " gas powered with electrical power of 208-240V + earth.

| Reference | Lenght (inch) | depth (inch) | Height (inch) | weight (lb) | Gas power (btu/h) | Electrical power (kw) |
|-----------|---------------|--------------|---------------|-------------|-------------------|-----------------------|
| 1675.8x | 68 | 24 5/8 | 64 7/8 | 772 | 174000 | 0,69 |
| 1375.12x | 56 7/8 | 27 5/8 | 63 3/8 | 706 | 154000 | 0,69 |
| 1375.8x | 56 1/8 | 24 5/8 | 64 7/8 | 662 | 154000 | 0,69 |
| 1375.6x | 56 1/8 | 26 1/8 | 64 7/8 | 650 | 154000 | 0,67 |
| 1375.5x | 56 1/8 | 24 5/8 | 45 3/4 | 419 | 102500 | 0,55 |
| 1375.4x | 56 1/8 | 24 5/8 | 45 3/4 | 419 | 102500 | 0,52 |
| 1375.2x | 56 1/8 | 24 5/8 | 31 1/2 | 221 | 51250 | 0,49 |
| 975.8x | 40 3/8 | 24 5/8 | 64 7/8 | 430 | 102500 | 0,44 |
| 975.6x | 40 3/8 | 27 5/8 | 64 7/8 | 430 | 102500 | 0,38 |
| 975.5x | 40 3/8 | 24 5/8 | 45 3/4 | 309 | 68240 | 0,35 |
| 975.4x | 40 3/8 | 24 5/8 | 45 3/4 | 309 | 68240 | 0,32 |
| 975.2x | 40 3/8 | 24 5/8 | 31 1/2 | 155 | 341200 | 0,29 |

The device is for professional use and should be used by qualified personnel.

Before starting any operation, please see these instructions. Carefully keep available near the rotisserie.

Upgrading facilities at the expense of the user.

Any cooking appliance generates heat and grease particles.

It is advised to plan their accommodation in premises protected anti-fire and mechanically ventilated, accordance with security regulations and health standards relating to tradesmouths

(please contact specialized companies and approved for benefits at work

perform according to safety standards: ventilation (extraction), plumbing (water, gas, fire protection, etc ...), electricity, building (non-slip tiles, firewall, etc ...).

We advise you to hire a qualified dealer for connecting and commissioning road from the roasting pan on condition that the electric and gas bookings are carried out by companies licensed, authorized by you, and waiting near the location of the device cooking.

For maintenance and repairs, you must contact the factory, the factory representative or local service company.

Interventions on the electrical parts must be performed by qualified personnel accordance with the standards.

The company is not liable for damages if:

- incorrect use of the device
- non-compliance with standards
- incorrect installation
- non compliance with guidance on maintenance
- unauthorized modification
- installation of non-original spare parts
- installation and use of the rotisserie different than those provided by the manufacturer

The plate is located on the back right in the middle of the upright.

1.2. TRADEMARK, MODEL, REFERENCE

Rotisseries **ROTISOL**, model « **GRANDES FLAMMES MILLENIUM** », (**GranfFlame GF**), references: **1675.8x, 1375.6x, 1375.8x, 1375.5x, 1375.2x, 975.8x, 975.5x and 975.2x.**

We advise you to hire a qualified dealer for connecting and commissioning road from the roasting pan on condition that the electric and gas bookings are carried out by companies licensed, authorized by you, and waiting near the location of the device cooking.

Interventions on the electrical parts must be performed by qualified personnel accordance with the standards.

The company is not liable for damages if:

- incorrect use of the device
- non-compliance with standards
- incorrect installation
- non compliance with guidance on maintenance
- unauthorized modification
- installation of non-original spare parts
- installation and use of the rotisserie different than those provided by the manufacturer

In case of suspicious odors of gas in place of the rotisserie, stop it by closing valves gas supplies and the power supply.

Open windows

If gas odors persist, call the local gas supplier.

| |
|---|
| <p style="text-align: center;">AVERTISSEMENT</p> <p>Mise à la terre Cet appareil est pourvu d'une fiche à trois broches dont une mise à la terre assurant une protection contre les chocs. La prise dans laquelle elle est branchée doit être correctement mise à la terre. Ne pas couper ni enlever la broche de mise à la terre de la fiche.</p> |
| <p style="text-align: center;">WARNING</p> <p>Electrical grounding instructions This appliance is equipped with a three-prong (grounding) plug for your protection against shock hazard and should be plugged directly into a properly grounded three-prong receptacle. Do not cut or remove the grounding prong from this plug.</p> |

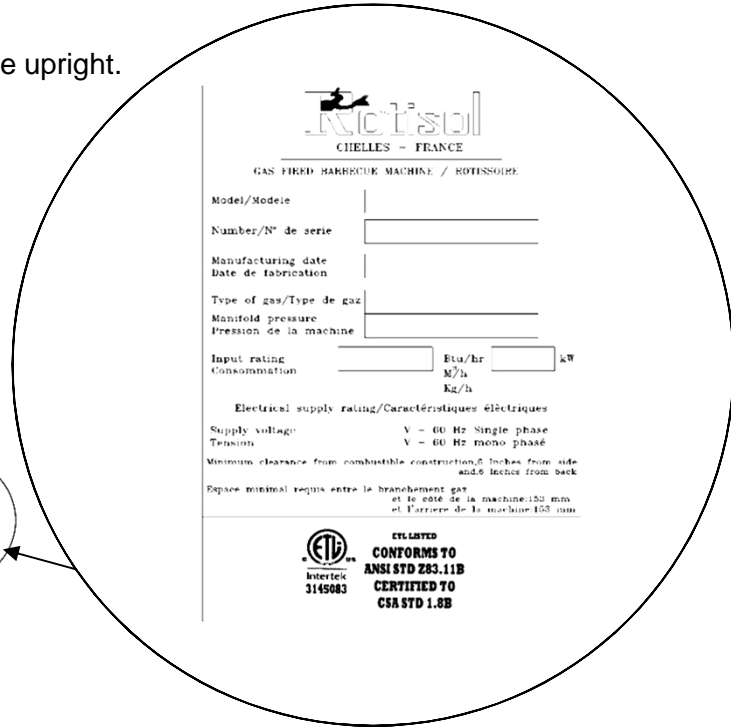
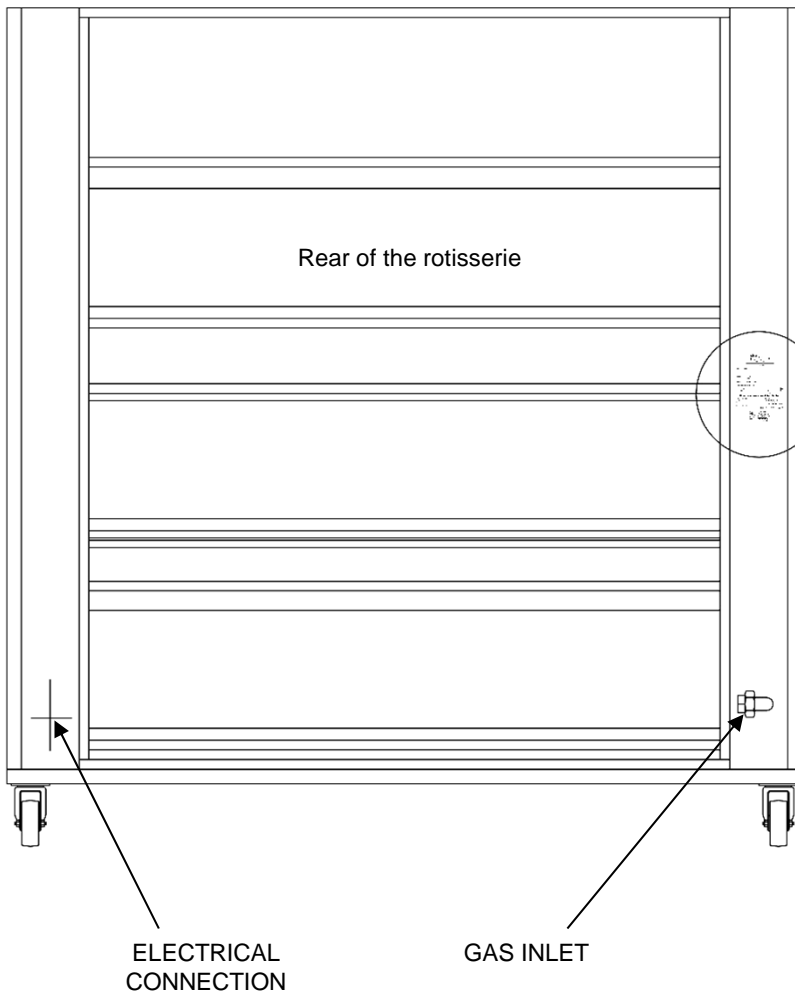
1.2. TRADEMARK, MODEL, REFERENCE

Rotisseries **ROTISOL**, model « **GRANDES FLAMMES MILLENIUM** », reference:

1675.8x, 1375.12x, 1375.8x, 1375.6x, 1375.5x, 1375.4x, 1375.2x, 975.8x, 975.6x, 975.5x, 975.4x et 975.2x.

1.3. SITE OF MANUFACTURERS PLATE

The plate is located on the back right in the middle of the upright.



1.4. COMPULSORY MARKING



INSTALLATION ET UTILISATION

- Installer en dessous d'une hotte de ventilation seulement.
- Ne pas installer cet appareil sous des surfaces combustibles non protégées
- ATTENTION. Le régulateur de pression fourni avec cet appareil doit être utilisé. Ce régulateur est réglé pour une pression de sortie de 8 pouces de colonne d'eau.
- L'alimentation en gaz doit être coupée à la bouteille d'alimentation en gaz PL lorsque cet appareil n'est pas utilisé.
- Installer dans des locaux faits de matériaux incombustible seulement

INSTAL AND USE

- For installation under ventilation hood only.
- Do not locate this appliance under overhead, unprotected combustible surfaces.
- CAUTION. The gas pressure regulator provided with this appliance must be used. This regulator is set an outlet pressure of 8 inches water column.
- The gas supply must be turned off at the LP-gas supply cylinder when this appliance is not in use.
- For use on noncombustible floors locations only

2. SETTING UP UNIT AND STARTING UP

- Before connecting and starting up the rotisserie. Ensure that the gas and electrical connections are present. This work are at the client cost, that he needs to have done by are a agreed company, near the position that the rotisserie is to be enforceable by companies.
- The new air flow require for the combustion is : 20,7 ft³/h per 1000 btu/h of the calorifique flow. the flow of combustion and ventilation air must be free and unhindered
- The gas supply must be turned off at the supply bottle LP gas (propane) when the unit is not used.

2.1. SETTING UP

2.1.1. UNPACKING

Unpack the rotisserie that is circled, filmed and fixed on palette.

2.1.2. INSTALLING THE UNIT NEXT TO WALLS AND APPLIANCES

A distance of 3/4 "should be maintained between the sides panels and adjacent walls. The openings must not be obstructed. The unit with glaze door open should be placed at a distance minimum of 3/4 " to adjacent walls.

2.1.3. APPLIANCE EQUIPPED WITH WHEELS

The device must be placed on a perfectly level ground and locked in a stationary position for use and et le stockage.

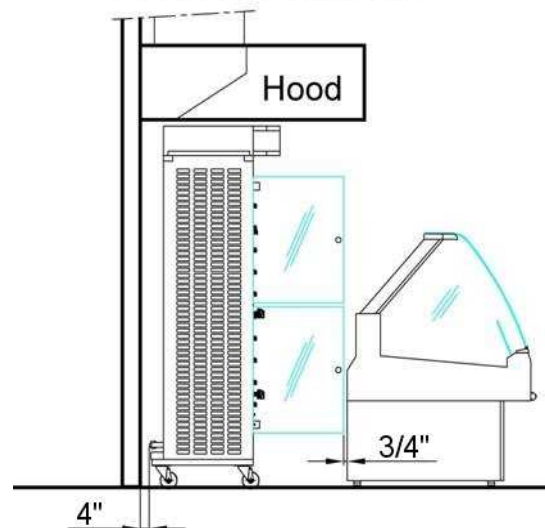
2.1.4. ENVIRONNEMENT

The device should not be installed near the steam,grease (frying,...), projections of water, high températures or other adverse condition.

Do not install this unit under unprotected combustible surfaces.

Keep the area of the machine free, and free of combustible materials.

INDOOR INSTALLATION OR OPEN KITCHEN



2.2. GAS CONNECTION

Connect the rôtisserie to the gas supply, with interposing a block valve to isolate this one from the rest of the installation.

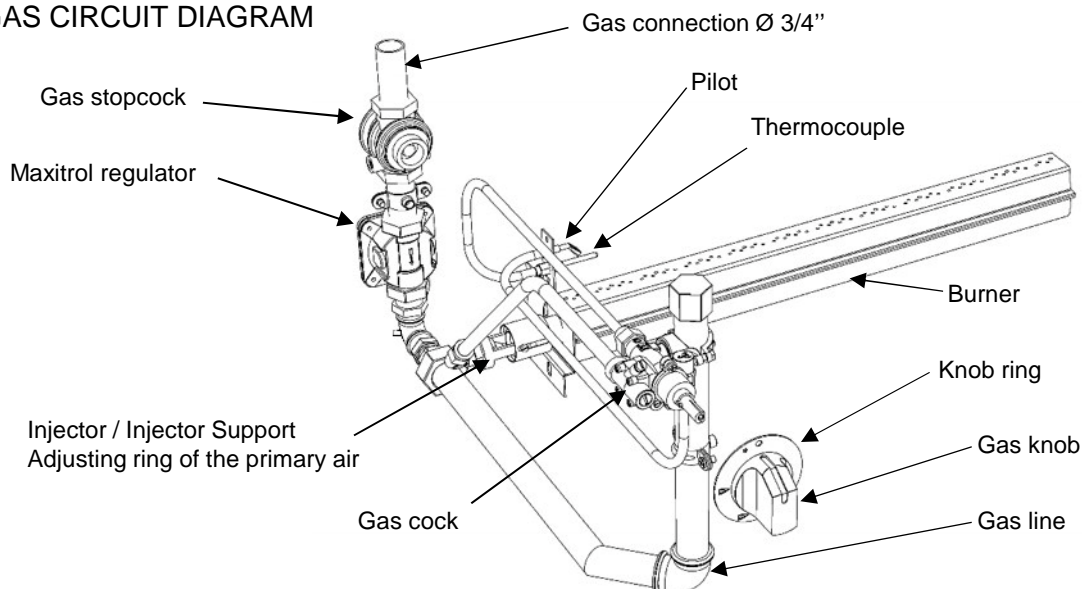
The gas supply conduct will be sized to minimize losses. Its diameter will be determined according to its path (length, number of bends, tees ...) and of the total power of the rotisserie.

"Check that the adjustments correspond to the nature and pressure of gas distributed in the installation".

CAUTION : The pressure regulator (Maxitrol) supplied with this unit must be set according to the gas used. To check the gas supply pressure to the unit simply connect a manometer to the water column on the pressure tapping located on the connection side of the unit gas when all the burners are ignited.

The gas pressure measured and must be equal to that shown on the rating plate for the gas used. Supply valves gas rotisserie require no adjustment for extra service life.

2.2.1. GAS CIRCUIT DIAGRAM



All this information are the property of Rotisol.

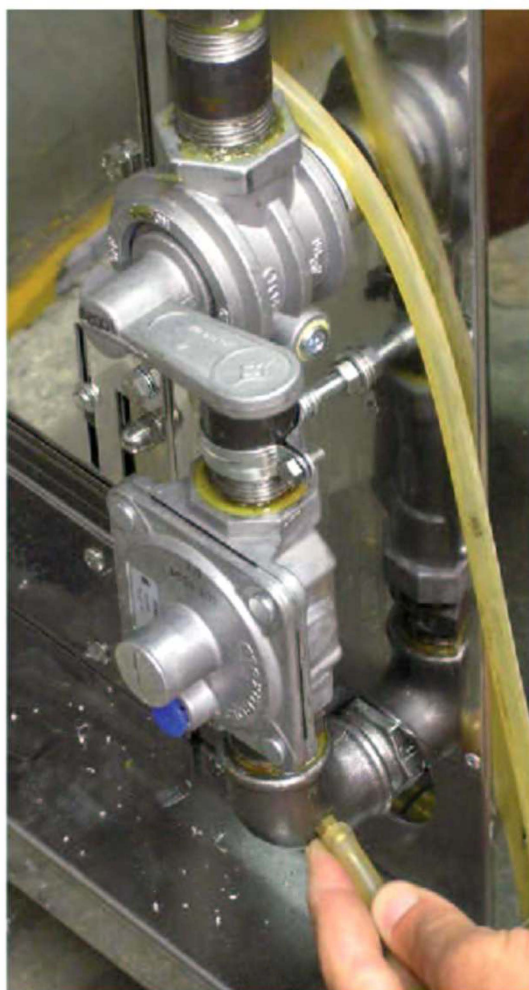
Reproduction partial or in totality are prohibited without authority prior written of company Rotisol.

SETTING THE REGULATOR MAXITROL (USA)

This operation is to be performed during the first test run after connecting the device.



- Remove the screw closure of the pressure tap with a screwdriver.



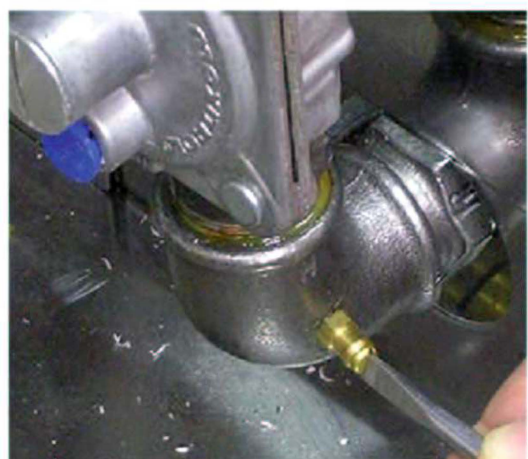
- Connecting a pressure gauge to the pressure tap by means of a rubber hose.
- Open the gas valve of the rotisserie.
- Light the burners of the rotisserie.



- Remove the screw of protection of regulator setting with a screwdriver.

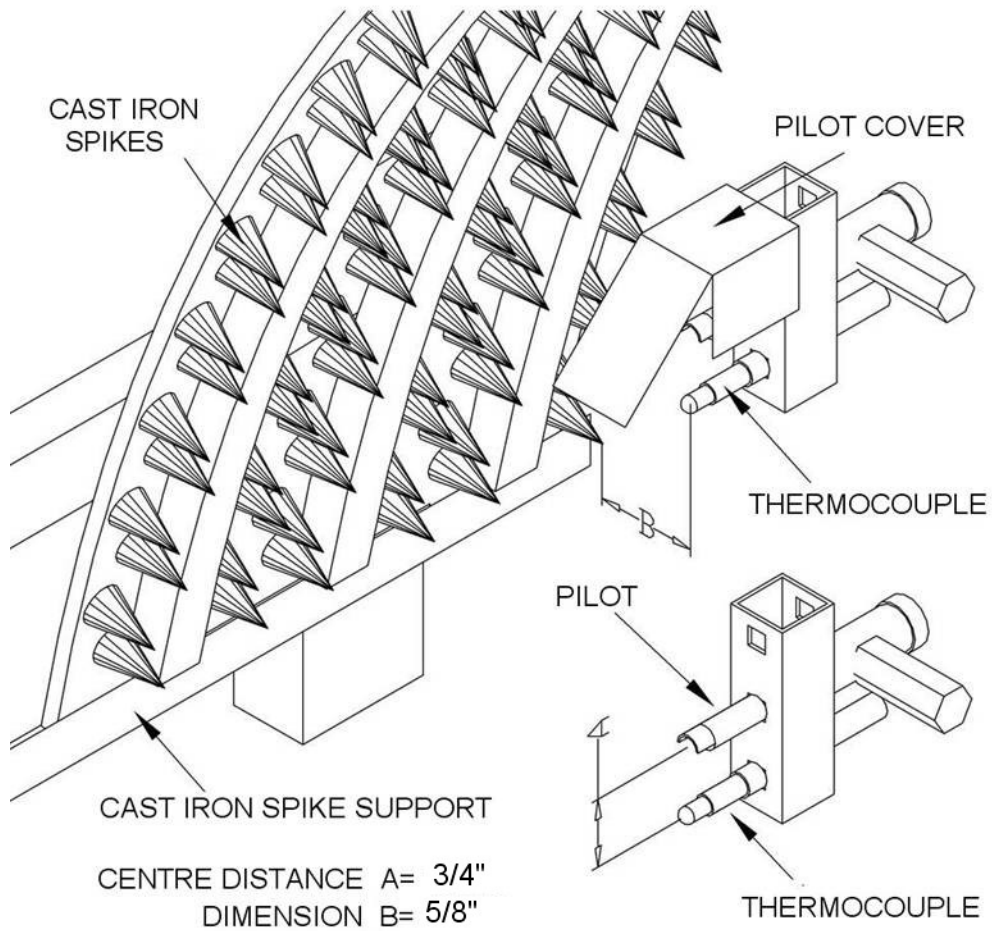


- Turn the adjustment screw with a screwdriver so that the pressure gauge reading corresponds to the pressure applied.

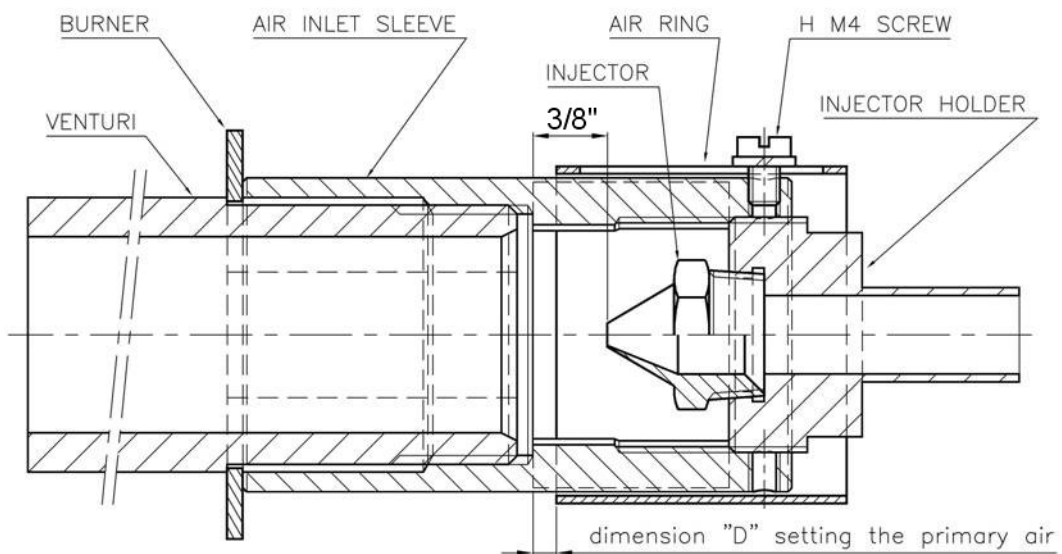


- Replace the screw of protection of regulator setting.
- Turn off the burners.
- Close the gas valve of the rotisserie.
- Remove the connecting tube the pressure gauge.
- Replace the screw closure of the pressure tap.

2.2.2. POSITION OF THE THERMOCOUPLE & PILOT LIGHT

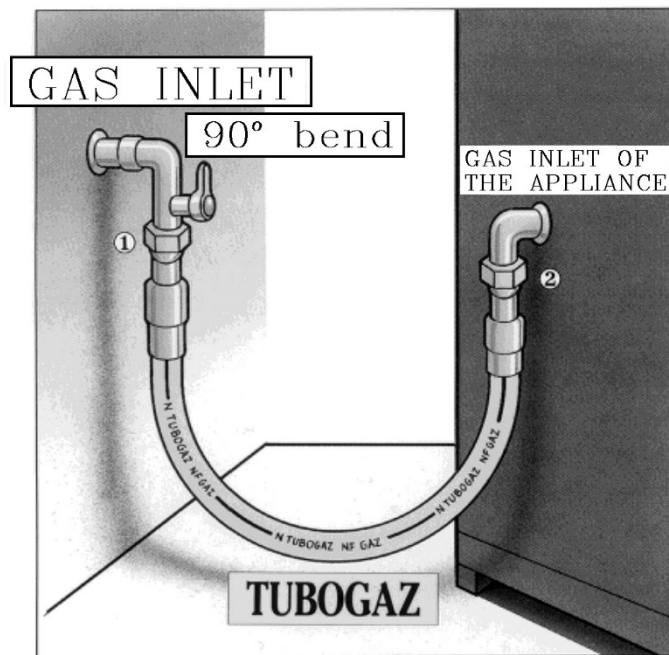


2.2.3. POSITION OF THE INJECTOR AND THE SLEEVE FOR THE AJUSTMENT OF THE PRIMARY AIR.



2.2.4. FIXED INSTALATION – MOBILE INSTALATION

FIXED



Connection type union 1 or 2

The use of **TURBOGAZ** or **similar** in professional fixed instalations, will permit a total liberty in the conception of the kitchen.

MOBILE

The conception of a kitchen with mobile gas appliance is possible thanks to a tandem of TURBOGAZ – TUSHGAS or SIMILAR.

FLEXIBLE PIPING IN THE SHAPE OF U

Measure of the gas flow under 20 mbar in kW/h PCI (natural gaz)

| | Ø1/2" R* = 90 mm | | Ø 3/4" R* = 110 mm | | Ø1" R* = 130 mm | |
|--------|---------------------|--------------|-----------------------|--------------|--------------------|--------------|
| | Without PUSHGAZ | With PUSHGAZ | Without PUSHGAZ | With PUSHGAZ | Without PUSHGAZ | With PUSHGAZ |
| 0,50 m | 25,3 | 21,5 | 93,6 | 80,6 | 186,2 | 129,4 |
| 0,75 m | 21,6 | 19,0 | 81,7 | 69,4 | 160,9 | 120,3 |
| 1,00 m | 19,4 | 17,5 | 76,8 | 67,9 | 144,9 | 116,4 |
| 1,25 m | 18,2 | 16,5 | 71,0 | 64,0 | 131,8 | 106,4 |
| 1,50 m | 17,0 | 15,7 | 66,5 | 60,2 | 120,3 | 98,8 |
| 2,00 m | 14,2 | 13,2 | 58,8 | 54,9 | 107,2 | 93,0 |

*R = minimum bend radius of hose

These flow are given for conditions of reference, note

: Temperature 15°C

: Atmospheric pressure : 1013 mbar

: Dry air

- The hose must not touch a hot wall
- For safety, please install a shorter cable or chain than the gas pipe between the rotisserie and a fixed wall.

All this information are the property of Rotisol.

Reproduction partial or in totality are prohibited without authority prior written of company Rotisol.

2.3. ELECTRICAL CONNECTION

Check that there is no errors with **CONNECTION**.

- Electrical rating : 208-230V~60Hz.
- Check that the installed power corresponds with the characteristics on the signal plate at the rear of the unit.

**IN ALL CASES , CONNECT THE EARTH WIRE
THE UNIT IS DELIVERED IN MONOPHASE + EARTH**

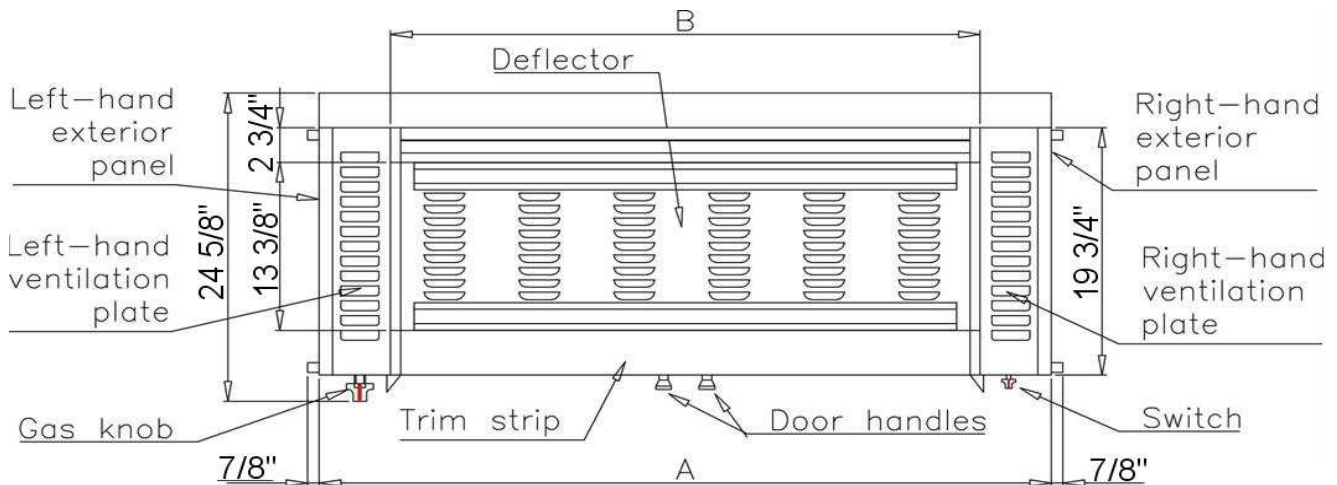
AVERTISSEMENT : Pour une protection continue contre le feu et les décharges électriques, remplacer les fusibles de 10 ampères

WARNING : For continued protection against fire and electric shock replace with 10 Ampere fuse

2.4. EVACUATION - SMOKE TYPE : A

- The unit is destined to be installed under an extraction system with ventilation
- A heat detector with holes is placed above the rotisserie

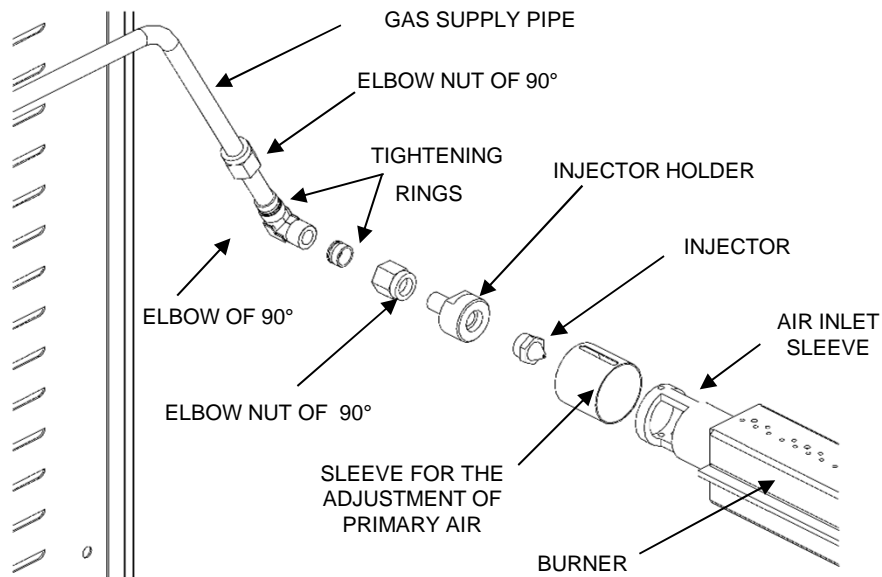
VIEW FROM ABOVE



| Reference | Measurement A (inch) | Measurement B (inch) |
|-----------|----------------------|----------------------|
| 1675.8x | 66" | 54 5/8" |
| 1375.12x | 54 1/8" | 42 3/4" |
| 1375.8x | 54 1/8" | 42 3/4" |
| 1375.6x | 54 1/8" | 42 3/4" |
| 1375.5x | 54 1/8" | 42 3/4" |
| 1375.4x | 54 1/8" | 42 3/4" |
| 1375.2x | 54 1/8" | 42 3/4" |
| 975.8x | 38 3/8" | 27" |
| 975.6x | 38 3/8" | 27" |
| 975.5x | 38 3/8" | 27" |
| 975.4x | 38 3/8" | 27" |
| 975.2x | 38 3/8" | 27" |

3. ADAPTING THE UNIT IN THE CASE OF CHANGING FROM ONE GAS TO ANOTHER

3.1. CHANGING THE INJECTOR



3.3. ADJUSTMENT OF THE PRIMARY AIR

You need to adjust the opening of the air sleeve to dim. **D** corresponding to the type of gas used (see position of the air sleeve, chapter 2.2.3 and the table of adjustment of the burner, chapter 3.3).

3.4. TABLE FOR ADJUSTMENT OF ONE BURNER

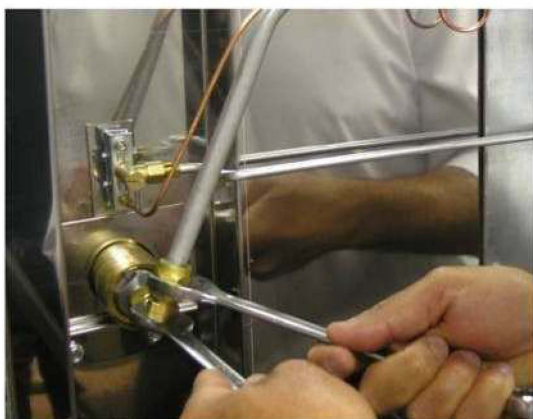
| MODEL | * CHARACTERISTICS | G20 under 20 mbar | G25 under 25 mbar | G31 under 37 mbar | G31 under 50 mbar |
|-------|---|-------------------|-------------------|-------------------|-------------------|
| 975x | injector making | 250 | 250 | 165 | 150 |
| | Diameter of injector in mm / inch | 2,5 / 0,0984 | 2,5 / 0,0984 | 1,65 / 0,0650 | 1,5 / 0,0591 |
| | Opening of the primary air « D » in mm (chapitre 2.2.3) | 2,5 | 2,5 | 5 | 4 |
| | Flow volumein ft ³ /h | 37,44 | 43,44 | - | - |
| | Mass flow Lbs/h | - | - | 1,71 | 1,71 |
| | Reduced heat flow in btu/h | 18000 | 18000 | 18000 | 18000 |
| | Presure at the tap for the reduced flow in mbar | 5 | 6,5 | 9,5 | 12,5 |
| 1375x | injector making | 290 | 290 | 200 | 180 |
| | Diameter of injector in mm / inch | 2,9 / 0,1142 | 2,9 / 0,1142 | 2 / 0,0787 | 1,8 / 0,0709 |
| | Opening of the primary air « D » in mm (chapitre 2.2.3) | 2,5 | 2,5 | 5 | 4 |
| | Flow volumein ft ³ /h | 56,16 | 65,34 | - | - |
| | Mass flow Lbs/h | - | - | 2,56 | 2,56 |
| | Reduced heat flow in btu/h | 26000 | 26000 | 26000 | 26000 |
| | Presure at the tap for the reduced flow in mbar | 5 | 6,5 | 9,5 | 12,5 |
| 1675x | injector making | 400 | 400 | 215 | 190 |
| | Diameter of injector in mm / inch | 4 / 0,1574 | 4 / 0,1574 | 2,15 / 0,0847 | 1,9 / 0,0748 |
| | Opening of the primary air « D » in mm (chapitre 2.2.3) | 13,5 | 13,5 | 5 | 4 |
| | Flow volumein ft ³ /h | 63,57 | 73,8 | - | - |
| | Mass flow Lbs/h | - | - | 2,91 | 2,91 |
| | Reduced heat flow in btu/h | 30000 | 30000 | 30000 | 30000 |
| | Presure at the tap for the reduced flow in mbar | 5 | 5 | 9,5 | 12,5 |

* Refer to the nameplates.

- Remove the outer panel left



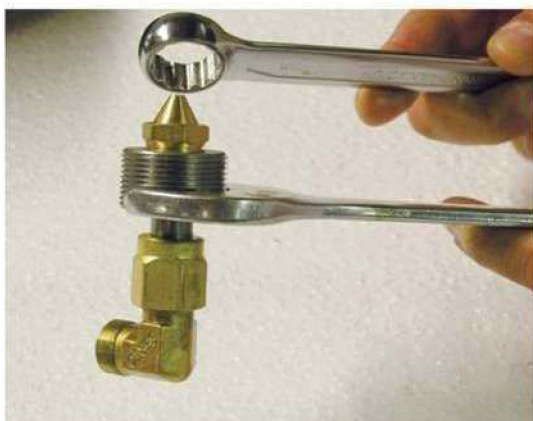
- With a 23 key loosen the nut on the valve supply pipe gas burner.



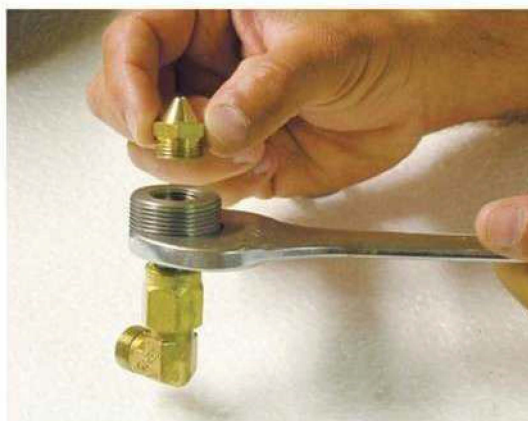
- With a wrench 19 to loosen the nut 90 ° elbow on the gas supply pipe by blocking the 90 ° elbow with a wrench 17.
- Turn the gas supply pipe up.



- Remove all 90 ° elbow, injector holder and injector by unscrewing the set completely.



- Unscrew the injector with a wrench de17 blocking the injector holder with a wrench 24.



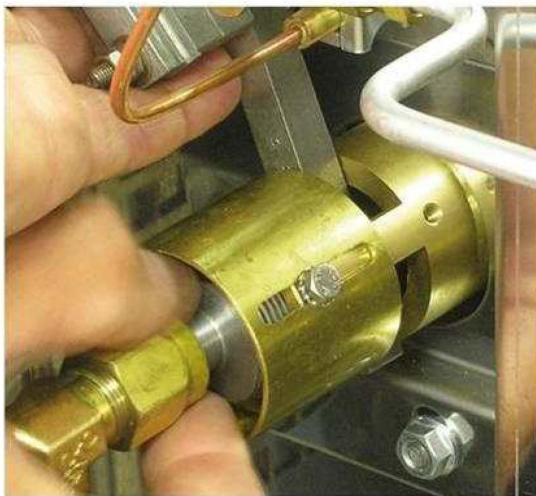
- Tighten but without forcing the new injector on the injector holder.



- Refit the 90 ° elbow, injector holder and injector.



- Using a wrench 7, loosen the screw holding the ring of air and pull back out.



- Using a wedge, adjust the position of the injector to the coast of 3/8" compared to the inside of the air intake sleeve (see instructions installer, chapter position of the injector and setting ring of the primary air).



- Using the keys used during disassembly reposition the gas supply pipe.



- Using a wedge to adjust dimension "D" position of the ring of air over the inner sleeve of the air intake (see Table installer instructions "setting a burner") .



- Block the air ring with the wrench 7.
- Make a complete leak test gas circuit.
- Replace the outer panel.

Rotisol

CONTROL CIRCUIT GAS SEAL WITH A SPRAY DETECTOR GAS LEAK.

- Remove the outer panel left.
- Connect to the network rotisserie gas.
- Light the burners.



- Using a spray can "leak detector gas" spray in the direction of all the connection point of the circuit gas.



- If there is rapid formation and / or bursting of large bubbles, review the application and assembly of components for connecting the gas line.
- Repeat until the complete elimination of bubbles.
- Turn off burner.
- Replace the outer panel left.

All this information are the property of Rotisol.

Reproduction partial or in totality are prohibited without authority prior written of company Rotisol.

3.4. LABEL SET

The label specifying the setting of gas to the appliance must be attached to it (see mandatory, chapter 1.4.). In case of change of gas, the new label comes with the new injectors.

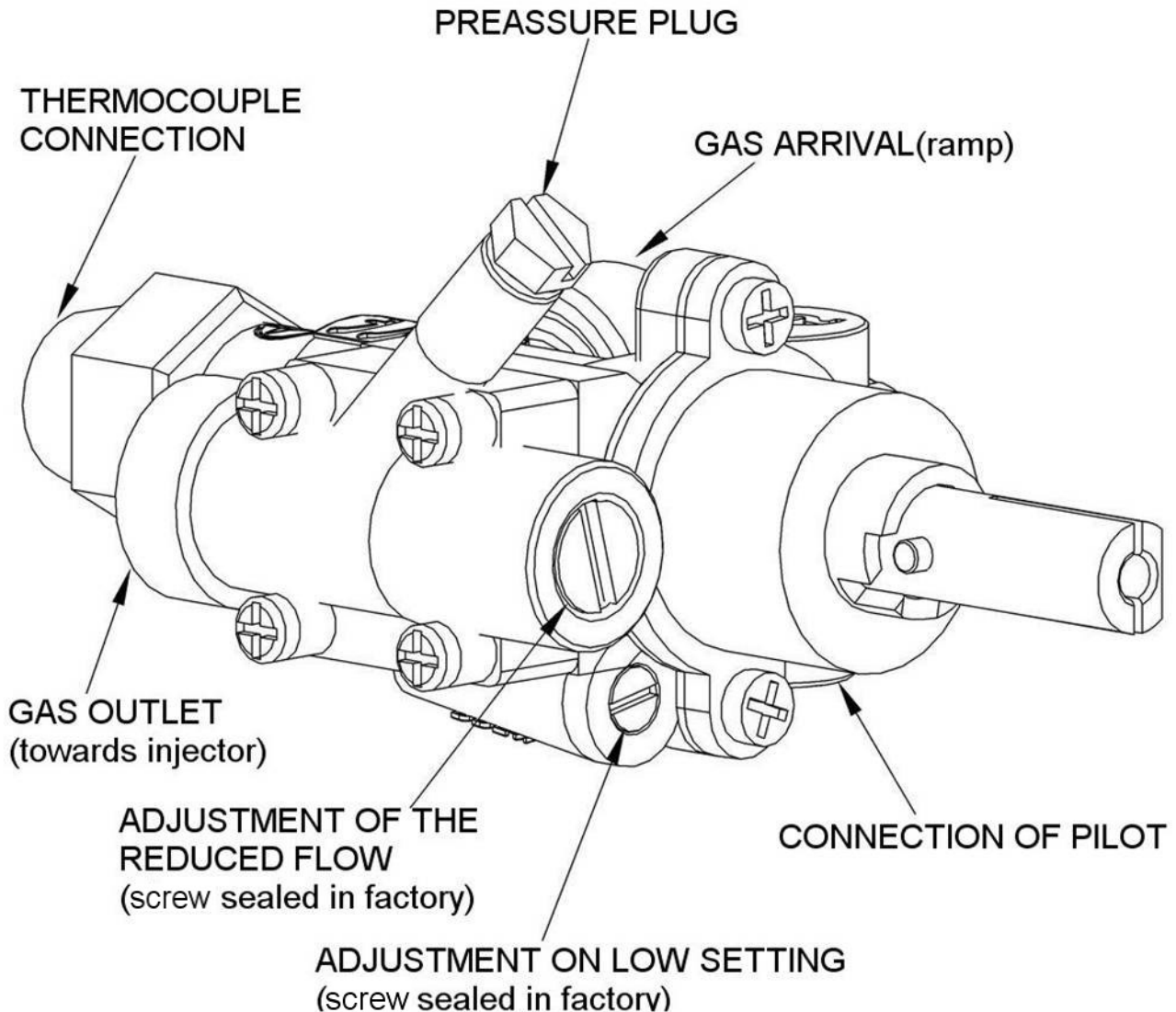
3.5. ADJUSTMENT OF THE PILOT

For natural gas (G20 et G25), unscrew only a $\frac{1}{4}$ of a turn the vis pointe 3 and check that the flame Heat the thermocouple correctly.

For propane gas (G31), turn the vis pointe fully without blocking it:

SEAL THE ADJUSTMENT

3.6. ADJUSTEMENT OF THE REDUCE FLOW



3.6.1. ADJUSTMENT OF REDUCED FLOW

Connect a manometer on the pressure plug and adjust to the pressure required (see table of : categories of gas, chapter 3.1.1) with the aide of the reduced flow screw:

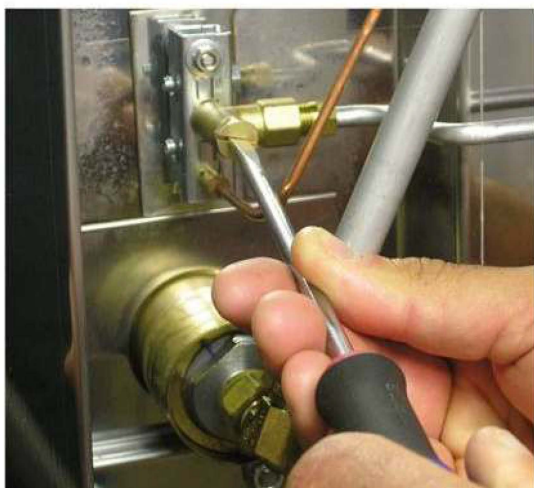
SEAL THE ADJUSTMENT.

3.6.2. ADJUSTMENT OF LOW SETTING

Put the tap to the « minimum » setting.

Connect a manometer on the preasure plug and adjust the pressure to that require) with the help of the low setting screw.

SEAL THE ADJUSTMENT



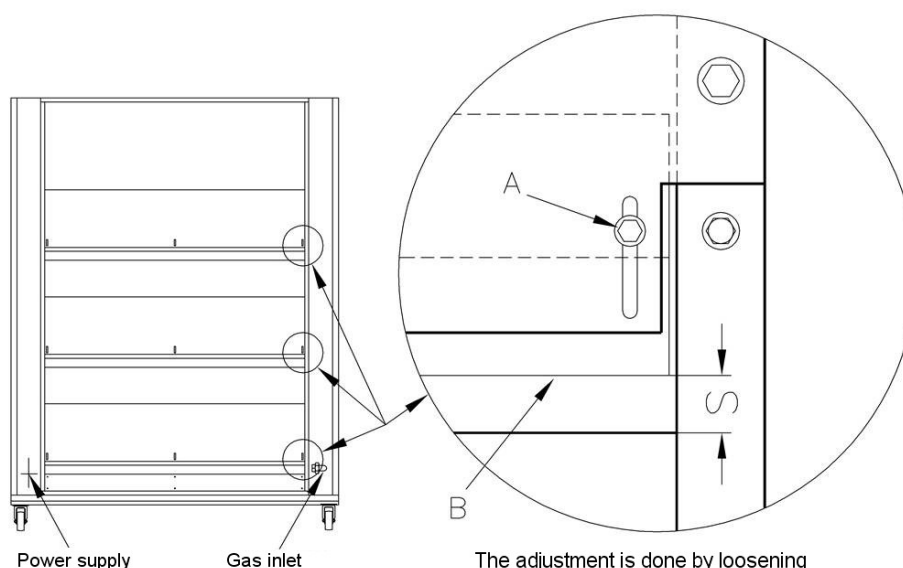
- Unscrew with a screwdriver and remove the protective cap of the screw.



- Act with a screwdriver on the screw making sure that the flame heats the thermocouple correctly.
- Replace and tighten the protection cap.

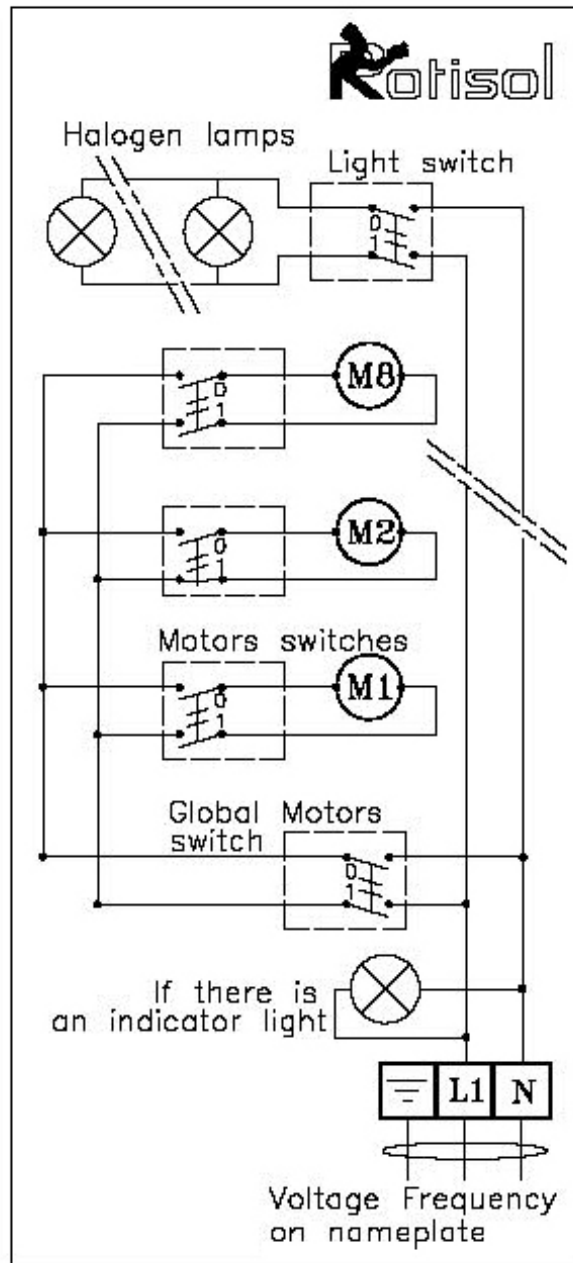
3.7. TABLE FOR THE ADJUSTMENT OF THE SECONDARY AIR

| MODEL | SHUTER | Dim « S » in G20 under 20 mbar | Dim « S » in G25 under 25 mbar | Dim « S » in G31 under 37 mbar | Dim « S » in G31 under 50 mbar |
|----------|--------|--------------------------------|--------------------------------|--------------------------------|--------------------------------|
| 975.2x | UPPER | 1/4" | 1/4" | 1/4" | 1/4" |
| 975.4x | UPPER | 1/4" | 1/4" | 1/4" | 1/4" |
| | MIDDLE | 1/4" | 1/4" | 1/4" | 1/4" |
| 975.5x | UPPER | 1/4" | 1/4" | 1/4" | 1/4" |
| | MIDDLE | 1/4" | 1/4" | 1/4" | 1/4" |
| 975.6x | UPPER | 1/4" | 1/4" | 1/4" | 1/4" |
| | MIDDLE | 1/4" | 1/4" | 1/4" | 1/4" |
| | LOWER | closed | closed | closed | closed |
| 975.8x | UPPER | 1/4" | 1/4" | 1/4" | 1/4" |
| | MIDDLE | 1/4" | 1/4" | 1/4" | 1/4" |
| | LOWER | closed | closed | closed | closed |
| 1375.2x | UPPER | 1/4" | 1/4" | 1/4" | 1/4" |
| 1375.4x | UPPER | 1/4" | 1/4" | 1/4" | 1/4" |
| | MIDDLE | 1/4" | 1/4" | 1/4" | 1/4" |
| 1375.5x | UPPER | 1/4" | 1/4" | 1/4" | 1/4" |
| | MIDDLE | 1/4" | 1/4" | 1/4" | 1/4" |
| 1375.6x | UPPER | 1/4" | 1/4" | 1/4" | 1/4" |
| | MIDDLE | 1/4" | 1/4" | 1/4" | 1/4" |
| | LOWER | closed | closed | closed | closed |
| 1375.8x | UPPER | 1/4" | 1/4" | 1/4" | 1/4" |
| | MIDDLE | 1/4" | 1/4" | 1/4" | 1/4" |
| | LOWER | closed | closed | closed | closed |
| 1375.12x | UPPER | 1/4" | 1/4" | 1/4" | 1/4" |
| | MIDDLE | 1/4" | 1/4" | 1/4" | 1/4" |
| | LOWER | closed | closed | closed | closed |
| 1675.8x | UPPER | 1/4" | 1/4" | 1/4" | 1/4" |
| | MIDDLE | 1/4" | 1/4" | 1/4" | 1/4" |
| | LOWER | closed | closed | closed | closed |



4. ELECTRICAL DRAWING

- _ Engines and terminal are located inside the right amount
- _ Switches and white pilot are located on the front of the unit on the right side.
- _ The one or many halogen lamps are located in the stip.

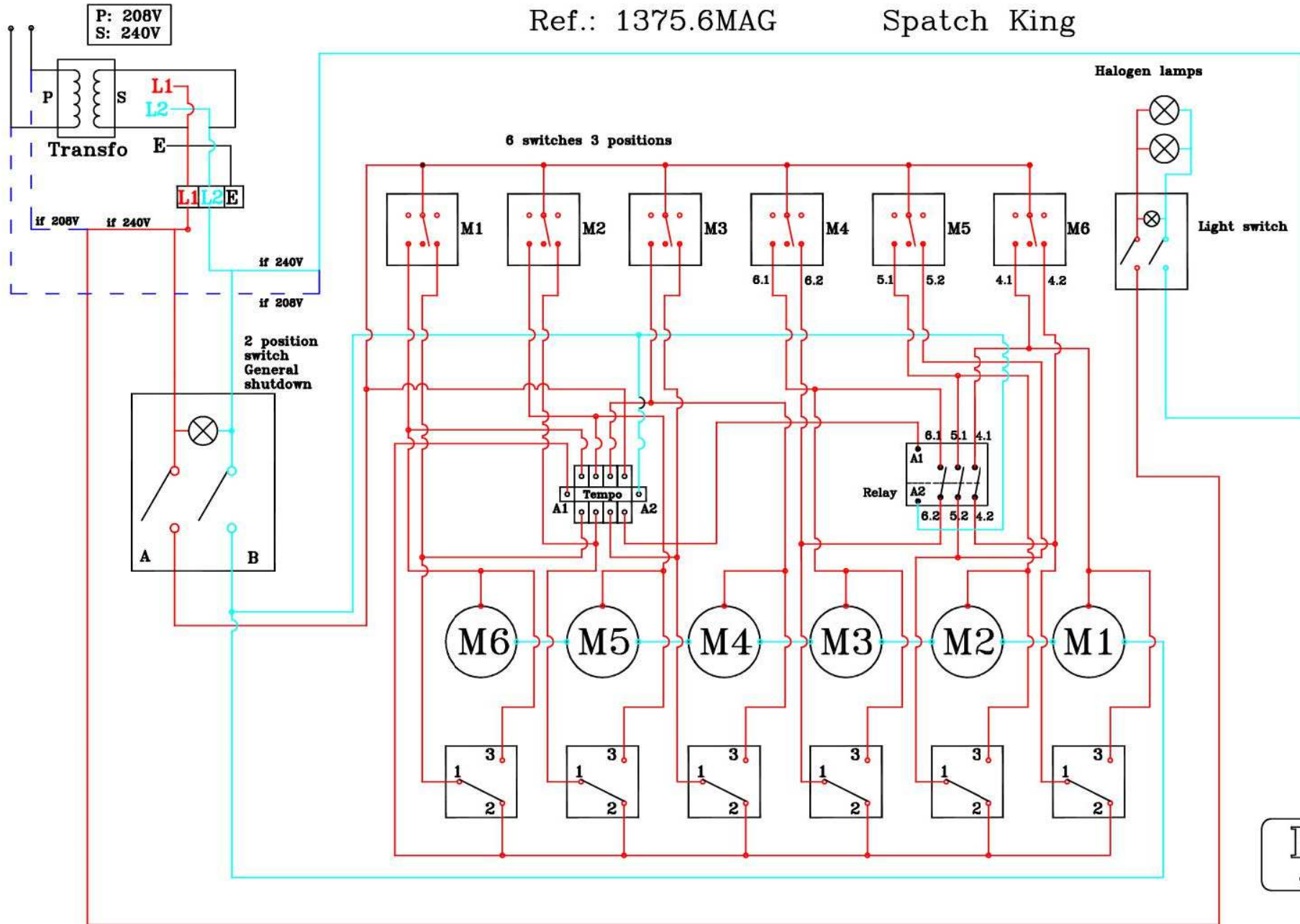


- For the rotisserie 1675.8x, there are 8 motors and 2 halogen lamps.*
- For the rotisserie 1375.12x, there are 6 motors and 2 halogen lamps.*
- For the rotisserie 1375.8x, there are 8 motors and 2 halogen lamps.*
- For the rotisserie 1375.5x, there are 5 motors and 2 halogen lamps.*
- For the rotisserie 1375.4x, there are 4 motors and 2 halogen lamps.*
- For the rotisserie 1375.2x, there are 3 motors and 2 halogen lamps.*
- For the rotisserie 975.8x, there are 8 motors and 1 halogen lamp.*
- For the rotisserie 975.6x, there are 6 motors and 1 halogen lamp.*
- For the rotisserie 975.5x, there are 5 motors and 1 halogen lamp.*
- For the rotisserie 975.4x, there are 4 motors and 1 halogen lamp.*
- For the rotisserie 975.2x, there are 3 motors and 1 halogen lamp.*

All this information are the property of Rotisol.

Reproduction partial or in totality are prohibited without authority prior written of company Rotisol.

ELECTRICAL DIAGRAM OF THE ROTISSERIE Ref.: 1375.6MAG Spatch King



5. SPARE PARTS
5.1 CENTRE PART
5.1.1 NOMENCLATURE

| REP | DESIGNATION | QTE | REFERENCE | GRANDES FLAMMES MODELS |
|-----------|-----------------------|-----|--------------------|------------------------|
| 1 | BASE | 1 | GF75000 | MODELS 1675 |
| | | | GF75002 | MODELS 1375 |
| | | | GF75001 | MODELS 975 |
| 2 | FRAME | 1 | 5484 | 1675.8 |
| | | | 5501 | 1375.8 |
| | | | 5502 | 1375.5 |
| | | | 5503 | 1375.2 |
| | | | 5504 | 975.8 |
| | | | 5500 | 975.5 |
| | | | 5505 | 975.2 |
| 3 | SPOILER GILLS | 1 | PLAQUIE1650 | MODELS 1675 |
| | | | PLAQUIE1350 | MODELS 1375 |
| | | | PLAQUIE950 | MODELS 975 |
| 4 | TOP OF PARABLE | 1 | GF75010B | MODELS 1675 |
| | | | GF75009B | MODELS 1375 |
| | | | GF75008B | MODELS 975 |
| 5 | PARABLE TYPE 2 | 1 | GF75007B | MODELS 1675 |
| | | | GF75006B | MODELS 1375 |
| | | | GF75005B | MODELS 975 |
| 6 | ACCESS HATCH | 1 | GF75088 | MODELS 8 SPITS |
| 7 | SUPPORT HALOGEN | 2 | GF75082 | MODELS 1375 - 1675 |
| | | | 1 | MODELS 975 |
| 8 | SUPPORT HALOGEN LAMP | 2 | SUPR7S78 or SUPR7S | MODELS 1375 - 1675 |
| | | | 1 | MODELS 975 |
| 9 | HALOGEN LAMP | 2 | LA78NM or LA150119 | MODELS 1375 - 1675 |
| | | | 1 | MODELS 975 |
| 10 | GLASS | 2 | PLAVERRE | MODELS 1375 - 1675 |
| | | | 1 | MODELS 975 |
| 11 | HALOGEN HATCH | 2 | TRAPHAL | MODELS 1375 - 1675 |
| | | | 1 | MODELS 975 |
| 12 | SUPPORT LEFT OF TRAY | 1 | GLIBACG | MODELS 5 - 8 SPITS |
| 13 | SUPPORT RIGHT OF TRAY | 1 | GLIBACD | MODELS 5 - 8 SPITS |
| 14 | MIDDLE DRIP TRAY | 1 | MDRIP1675 | MODELS 1675 |
| | | | MDRIP1375 | MODELS 1375 |
| | | | MDRIP975 | MODELS 975 |
| 15 | DRAIN PLUG | 1 | BV284 | ALL MODELS |
| 16 | DRAIN PLUG | 1 | BV5000 | ALL MODELS |
| 17 | DRIP TRAY | 1 | DRIP1675 | MODELS 1675 |
| | | | DRIP1375 | MODELS 1375 |
| | | | DRIP975 | MODELS 975 |
| 18 | SUPPORT BURNER | 3 | BRSUP1650 | 1675-8 |
| | | | BRSUP1350 | 1375.8 |
| | | 2 | | 1375-5 |
| | | | | 1375-2 |
| | | 3 | BRSUP950 | 975-8 |
| | | | | 975-5 |
| | | | | 975-2 |
| 19 | BURNER | 3 | BRU1650NM | 1675-8 |

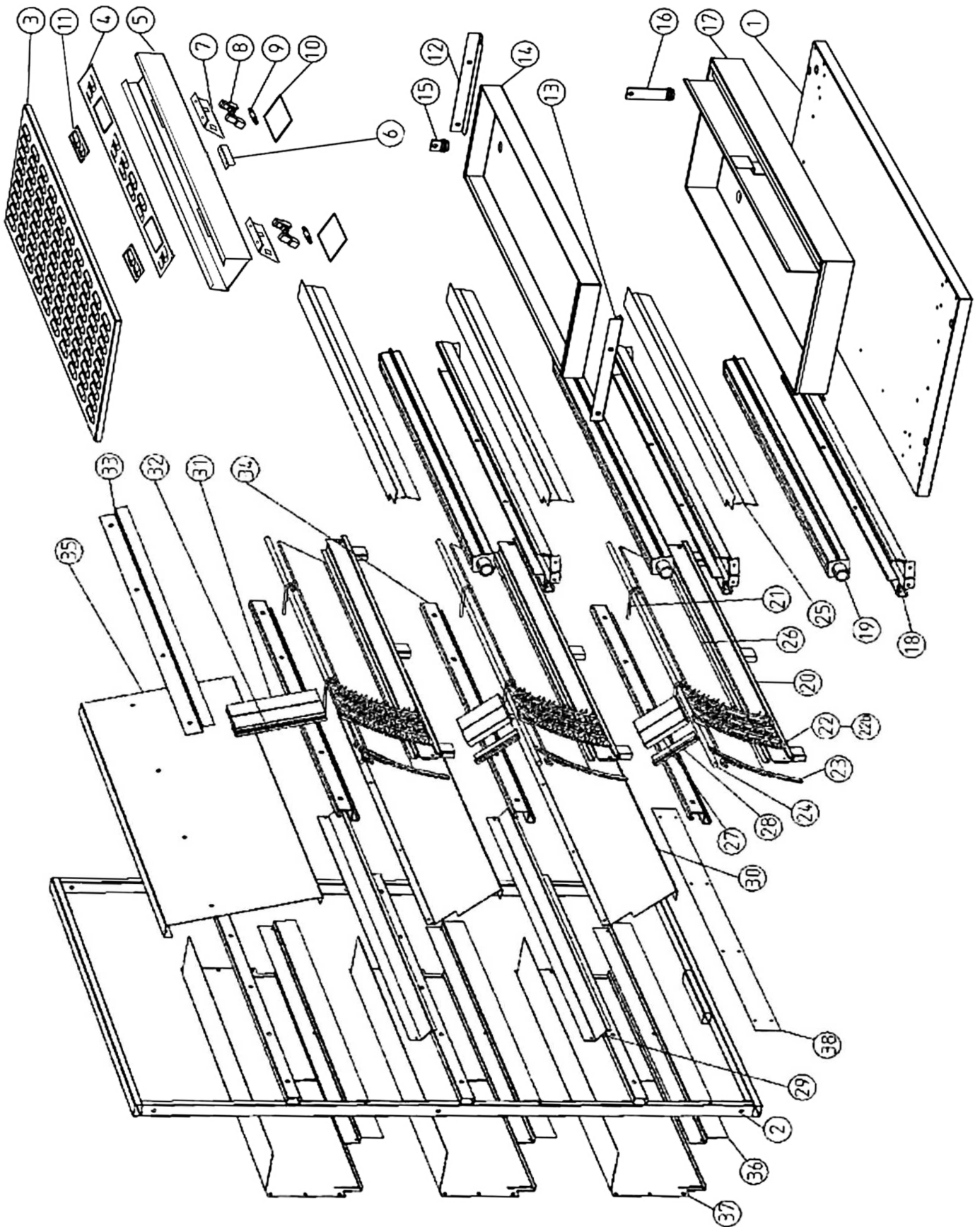
| REP | DESIGNATION | QTE | REFERENCE | GRANDES FLAMMES MODELS | | |
|-----|--------------------------------|-----|------------------------|------------------------|---------------|----------------|
| 20 | SUPPORT OF CAST IRON PLATE | 3 | BRU1350NM | 1375.8 | | |
| | | 2 | | 1375-5 | | |
| | | 1 | | 1375-2 | | |
| | | 3 | BRU950NM | 975-8 | | |
| | | 2 | | 975-5 | | |
| | | 1 | | 975-2 | | |
| | | 3 | SUPICOT1675 | 1675-8 | | |
| | | 3 | SUPICOT1350 | 1375.8 | | |
| | | 2 | | 1375-5 | | |
| | | 1 | | 1375-2 | | |
| 21 | TIGE DE BLOCAGE PICOTS | 3 | SUPICOT975 | 975-8 | | |
| | | 2 | | 975-5 | | |
| | | 1 | | 975-2 | | |
| | | 6 | TIGE123 | 8 SPITS MODELS | | |
| | | 4 | | 5 SPITS MODELS | | |
| 22 | CAST IRON PLATE | 2 | | 3 SPITS MODELS | | |
| | | 27 | PLPICOT5166 | 1675-8 | | |
| | | 21 | | 1375.8 | | |
| 22B | SMALL CAST IRON PLATE | 14 | | 1375-5 | | |
| | | 7 | | 1375-2 | | |
| | | 12 | PLPICOT5166 (a) | 975-8 | | |
| | | 8 | | 975-5 | | |
| | | 4 | | 975-2 | | |
| | | 3 | PLPICOT5419 | 975-8 | | |
| | | 2 | | 975-5 | | |
| | | 1 | | 975-2 | | |
| | | 23 | SPACER CAST IRON PLATE | 6 | GF008 | 8 SPITS MODELS |
| | | | | 4 | | 5 SPITS MODELS |
| 2 | | | | 3 SPITS MODELS | | |
| 24 | AXE CAST IRON PLATE | 3 | BARPLPICOT1650 | 1675-8 | | |
| | | 3 | BARPLPICOT1350 | 1375.8 | | |
| | | 2 | | 1375.5 | | |
| | | 1 | | 1375.2 | | |
| | | 3 | BARPLPICOT950 | 975.8 | | |
| | | 2 | | 975.5 | | |
| | | 1 | | 975.2 | | |
| 25 | BLOCKING ROD CAST IRON PLATE | 3 | PROTBR1650x2 | 1675.8 | | |
| | | 3 | PROTBR1350 | 1375.8 | | |
| | | 2 | | 1375.5 | | |
| | | 1 | | 1375.2 | | |
| | | 3 | PROTBR950 | 975.8 | | |
| | | 2 | | 975.5 | | |
| | | 1 | | 975.2 | | |
| | | 26 | ISULATION | 3 | MILLBOARD1675 | 1675.8 |
| 3 | MILLBOARD1375 | | | 1375.8 | | |
| 2 | | | | 1375.5 | | |
| 1 | | | | 1375.2 | | |
| 3 | MILLBOARD975 | | | 975.8 | | |
| 2 | | | | 975.5 | | |
| 1 | | | | 975.2 | | |
| 27 | VAUGIRARD PLATE MIDDLE / LOWER | 48 | BRI2205415 (1) | 1675.8 | | |

| REP | DESIGNATION | QTE | REFERENCE | GRANDES FLAMMES MODELS |
|-----------|---------------------------------|-----|--------------|------------------------|
| | | 38 | | 1375.8 |
| | | 19 | | 1375.5 |
| | | 24 | | 975.8 |
| | | 12 | | 975.5 |
| 28 | SUPPLEMENT BRICK MIDDLE / LOWER | 4 | GF16COMPBRB | 1675.8 |
| | | 4 | GF13COMPBRB | 1375.8 |
| | | 2 | | 1375.5 |
| 29 | BRICK HOLDER MIDDLE / LOWER | 2 | BLOCBRIGF16 | 1675.8 |
| | | 2 | BLOCBRIGF13 | 1375.8 |
| | | 1 | | 1375.5 |
| | | 2 | BLOCBRIGF9 | 975.8 |
| | | 1 | | 975.5 |
| 30 | SUPPORT BRICK MIDDLE / LOWER | 2 | GF50026C | 1675.8 |
| | | 2 | GF50026B | 1375.8 |
| | | 1 | | 1375.5 |
| | | 2 | GF50026A | 975.8 |
| | | 1 | | 975.5 |
| 31 | VAUGIRARD PLATE UPPER | 24 | BRI2205415 | MODELS 1675 |
| | | 19 | | MODELS 1375 |
| | | 12 | | MODELS 975 |
| 32 | SUPPLEMENT BRICK UPPER | 2 | GF16COMPBRH | MODELS 1675 |
| | | 2 | GF13COMPBRH | MODELS 1375 |
| 33 | BRICK HOLDER UPPER | 1 | BLOCBRIGFH16 | MODELS 1675 |
| | | 1 | BLOCBRIGFH13 | MODELS 1375 |
| | | 1 | BLOCBRIGFH9 | MODELS 975 |
| 34 | TIGHTNER FOR REAR FRAME | 3 | GF50032C | 1675.8 |
| | | 3 | GF50032B | 1375.8 |
| | | 2 | | 1375.5 |
| | | 1 | | 1375.2 |
| 35 | SUPPORT FOR UPPER BRICKS | 1 | GF50027C | MODELS 1675 |
| | | 1 | GF50027B | MODELS 1375 |
| | | 1 | GF50027A | MODELS 975 |
| 36 | AJUSTER OF AIR INTAKE | 3 | GF50031C | 1675.8 |
| | | 3 | GF50031B | 1375.8 |
| | | 2 | | 1375.5 |
| | | 1 | | 1375.2 |
| | | 3 | GF50031A | 975.8 |
| | | 2 | | 975.5 |
| | | 1 | | 975.2 |
| 37 | REAR | 3 | GF50030C | 1675.8 |
| | | 3 | GF50030B | 1375.8 |
| | | 2 | | 1375.5 |
| | | 1 | | 1375.2 |
| | | 3 | GF50030A | 975.8 |
| | | 2 | | 975.5 |
| | | 1 | | 975.2 |
| 38 | REAR LOWER PLATE | 1 | GF50033C | MODELS 1675 |
| | | 1 | GF50033B | MODELS 1375 |
| | | 1 | GF50033A | MODELS 975 |

(1) plate length 4 3/4

(A) 975 cast iron half plate Ref: PLP

5.1.2. EXPLODED CENTRAL PART



All this information are the property of Rotisol.
Reproduction partial or in totality are prohibited without authority prior written of company Rotisol.

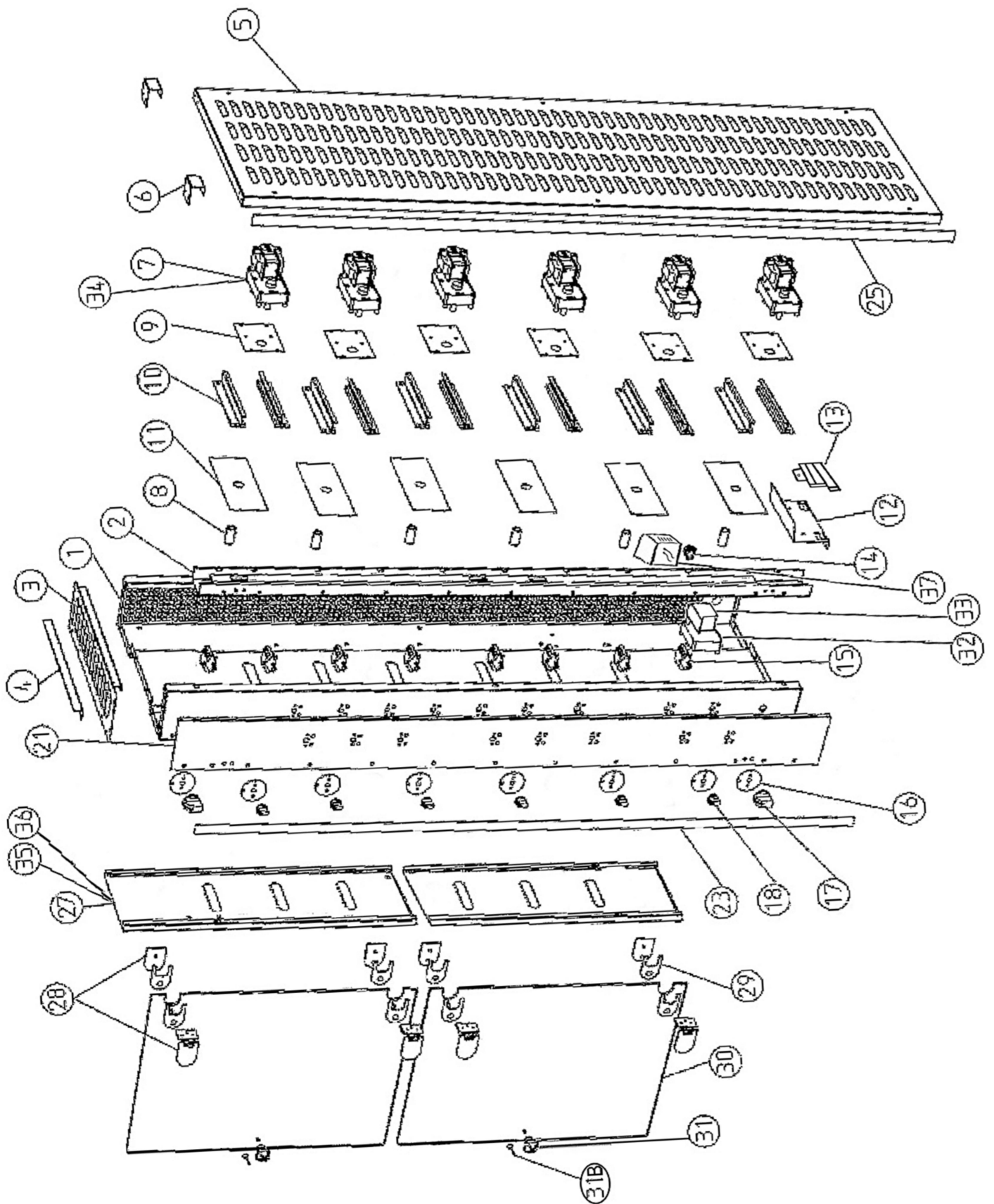
5.2 RIGHT SIDE

5.2.1. NOMENCLATURE

| REP | DESIGNATION | QTE | REFERENCE | GRANDES FLAMMES MODELS |
|-----------|-------------------------------|-----|---------------|------------------------|
| 1 | RIGHT MOUNT | 1 | GF75003 | MODELS 8 SPITS |
| | | 1 | GF75011 | MODELS 5 SPITS |
| | | 1 | GF75021 | MODELS 3 SPITS |
| 2 | TIGHTENER RIGHT MOUNT | 1 | GF75065 | MODELS 8 SPITS |
| | | 1 | GF75045 | MODELS 5 SPITS |
| | | 1 | GF75025 | MODELS 3 SPITS |
| 3 | UPPER PART RIGHT MOUNT | 1 | GF75083 | ALL MODELS |
| 4 | L RIGHT MOUNT | 1 | GF75062 | ALL MODELS |
| 5 | EXTERIOR PANEL RIGHT | 1 | GF75174 | MODELS 8 SPITS |
| | | 1 | GF75180 | MODELS 5 SPITS |
| | | 1 | GF75186 | MODELS 3 SPITS |
| 6 | STOP FOR EXTERIOR PANEL | 4 | GF75085 | ALL MODELS |
| 7 | MOTOR SPG | 8 | MOTEUR SPG GF | MODELS 8 SPITS |
| | | 5 | MOTEUR SPG GF | MODELS 5 SPITS |
| | | 3 | | MODELS 3 SPITS |
| 8 | AXIS MOTOR | 8 | EH1412 | 1675.8 |
| | | 8 | EH1212 | OTHER MODELS 8 SPITS |
| | | 5 | | MODELS 5 SPITS |
| | | 3 | | MODELS 3 SPITS |
| 9 | SUPPORT PLATE FOR MOTOR | 8 | 2116BM | MODELS 8 SPITS |
| | | 5 | | MODELS 5 SPITS |
| | | 3 | | MODELS 3 SPITS |
| 10 | SLIDE MOTOR SUPPORT | 16 | GLIGF75 | MODELS 8 SPITS |
| | | 10 | | MODELS 5 SPITS |
| | | 6 | | MODELS 3 SPITS |
| 11 | MOTOR PROTECTION | 8 | GF006 | MODELS 8 SPITS |
| | | 5 | | MODELS 5 SPITS |
| | | 3 | | MODELS 3 SPITS |
| 12 | TERMINAL SUPPORT | 1 | GFE7503 | ALL MODELS |
| 13 | TERMINAL | 1 | BORNECO1 | ALL MODELS |
| 14 | WIRE PASS | 1 | PRETH03302M | ALL MODELS |
| 15 | SWITCH | 10 | COMROT | MODELS 8 SPITS |
| | | 7 | | MODELS 5 SPITS |
| | | 5 | | MODELS 3 SPITS |
| 16 | CHEST | 10 | PLASCOMCIR | MODELS 8 SPITS |
| | | 7 | | MODELS 5 SPITS |
| | | 5 | | MODELS 3 SPITS |
| 17 | SWITCH BUTTON | 2 | BOUCOM5550 | ALL MODELS |
| 18 | SWITCH BUTTON | 8 | BOUCOM5214 | MODELS 8 SPITS |
| | | 7 | | MODELS 5 SPITS |
| | | 5 | | MODELS 3 SPITS |
| 21 | FRONT RIGHT SIDE ELECTRIC | 1 | TABD8Mxxx | MODELS 8 SPITS |
| | | 1 | TABD5Mxxx | MODELS 5 SPITS |
| | | 1 | TABD2Mxxx | MODELS 3 SPITS |
| 23 | ROD FRONT RIGHT SIDE ELECTRIC | 1 | FERGF75C8FD | MODELS 8 SPITS |
| | | 1 | FERGF75C5FD | MODELS 5 SPITS |
| | | 1 | FERGF75C2FD | MODELS 3 SPITS |
| 25 | ROD RIGHT PANEL | 1 | FERGF75C8PD | MODELS 8 SPITS |

| REP | DESIGNATION | QTE | REFERENCE | GRANDES FLAMMES MODELS | | |
|------------|-----------------------|-----------|---------------------|------------------------|----------|--------------------|
| 27 | COVER UP AND DOWN | 1 | FERGF75C5PD | MODELS 5 SPITS | | |
| | | 1 | FERGF75C2PD | MODELS 3 SPITS | | |
| | | 1 | GF750630-GF750631 | MODELS 8 SPITS | | |
| | | 1 | GF75043 | MODELS 5 SPITS | | |
| 28 | HINGE | 1 | GF75023 | MODELS 3 SPITS | | |
| | | 4 | CHAGF | MODELS 8 SPITS | | |
| 29 | HINGE JOINT | 2 | | ALL MODELS | | |
| | | 8 | RAINEXC2 | MODELS 8 SPITS | | |
| 30 | GLASS DOOR | 4 | | ALL MODELS | | |
| | | 2 | GL216B | 1675.8 | | |
| | | 2 | GL215B | 1375.8 | | |
| | | 2 | GL214B | 975.8 | | |
| | | 1 | GL211B | 1375.5 | | |
| | | 1 | GL210B | 1375.2 | | |
| | | 1 | GL208B | 975.5 | | |
| | | 1 | GL207B | 975.2 | | |
| | | 31 | KNOB FOR GLASS DOOR | 2 | BOUT1193 | MODELS 8 SPITS |
| | | | | 1 | BOUT1193 | MODELS 3 - 5 SPITS |
| 31B | CONNECTOR KNOB CHROME | 2 | RA283 | 8 Spits | | |
| | | 1 | RA283 | 3 - 5 Spits | | |
| | CONNECTOR KNOB GOLDEN | 2 | RA283DOR | 8 Spits | | |
| | | 1 | RA283DOR | 3 - 5 Spits | | |
| | | 1 | BOUT1193 | MODELS 3 - 5 SPITS | | |
| 32 | RELAY | 1 | RFP | 1375.6 G "CRAPAUDINE" | | |
| 33 | TIME RELAY | 1 | TEMPO2 | 1375.6 G "CRAPAUDINE" | | |
| 34 | MOTOR KIT | 1 | MOTGF75ALT612C | 1375.6 G "CRAPAUDINE" | | |
| 35 | COVER UP | 1 | GF750630CRAP | 1375.6 G "CRAPAUDINE" | | |
| 36 | COVER DOWN | 1 | GF750631CRAP | 1375.6 G "CRAPAUDINE" | | |
| 37 | TRANSFORMER | 1 | TRANSFO86368 | 1375.6 G "CRAPAUDINE" | | |

5.2.2. EXPLODED RIGHT SIDE



All this information are the property of Rotisol.
 Reproduction partial or in totality are prohibited without authority prior written of company Rotisol.

5.3 LEFT PART

5.3.1. NOMENCLATURE

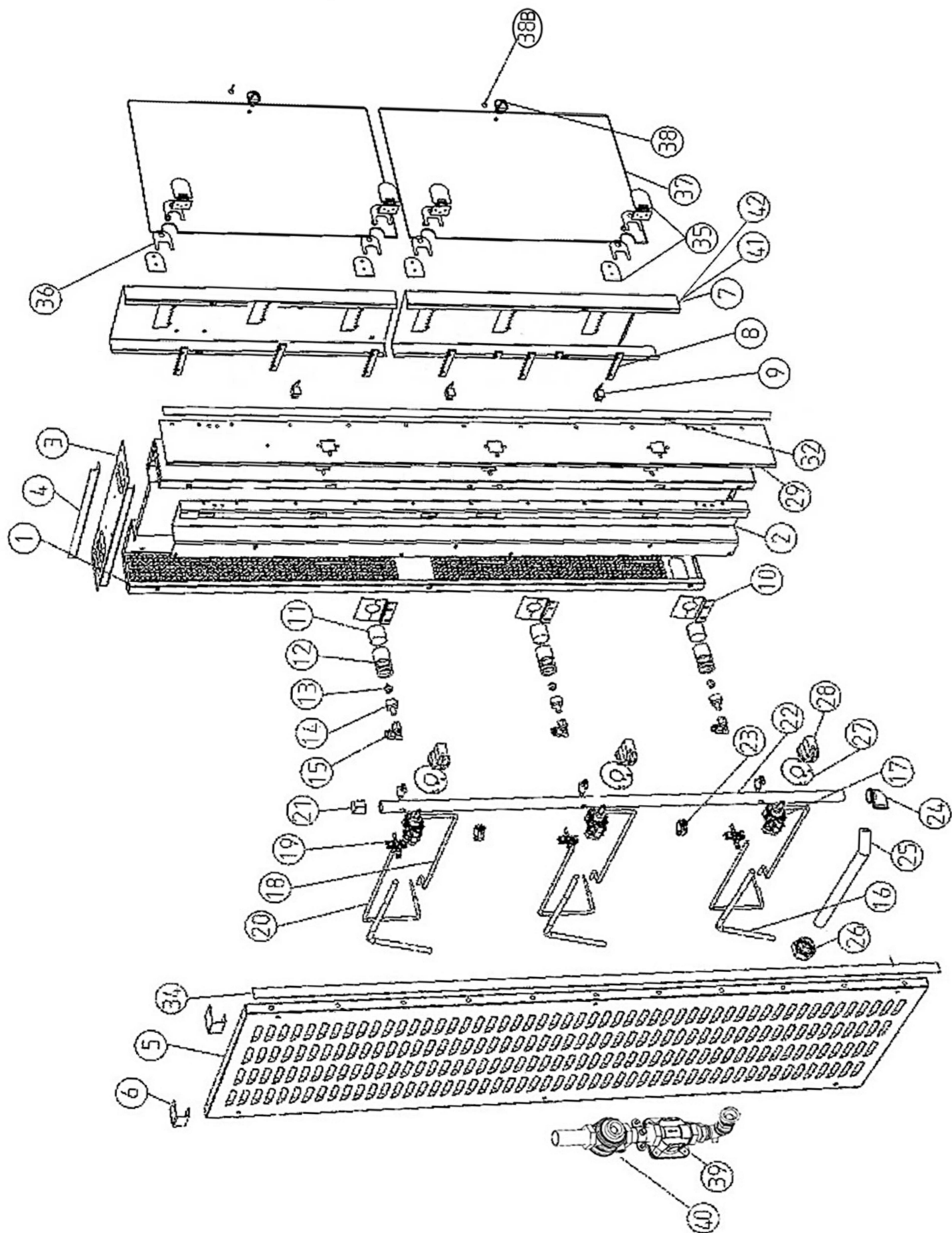
| REP | DESIGNATION | QTE | REFERENCE | GRANDES FLAMMES MODELS |
|-----|------------------------------|-----|------------------------|------------------------|
| 1 | LEFT MOUNT | 1 | GF75004 | MODELS 8 SPITS |
| | | 1 | GF75012 | MODELS 5 SPITS |
| | | 1 | GF75022 | MODELS 3 SPITS |
| 2 | TIGHTNER LEFT MOUNT | 1 | GF75066 | MODELS 8 SPITS |
| | | 1 | GF75046 | MODELS 5 SPITS |
| | | 1 | GF75026 | MODELS 3 SPITS |
| 3 | UPPER PART LEFT MOUNT | 1 | GF75084 | ALL MODELS |
| 4 | L LEFT MOUNT | 1 | GF75061 | ALL MODELS |
| 5 | EXTERIOR PANEL LEFT | 1 | GF75175 | MODELS 8 SPITS |
| | | 1 | GF75181 | MODELS 5 SPITS |
| | | 1 | GF75187 | MODELS 3 SPITS |
| 6 | STOP FOR EXTERIOR PANEL | 4 | GF75085 | ALL MODELS |
| 7 | SPIT SUPPORT HIGH AND LOW | 1 | GF750640-GF750641 | MODELS 8 SPITS |
| | | 1 | GF75044 | MODELS 5 SPITS |
| | | 1 | GF75024 | MODELS 3 SPITS |
| 8 | SUPPORT PLATE FOR SPIT BRASS | 8 | GF75SUPLAITBR | MODELS 8 SPITS |
| | | 5 | | MODELS 5 SPITS |
| | | 3 | | MODELS 3 SPITS |
| 9 | PILOT COVER | 3 | CACHVEILINT | MODELS 8 SPITS |
| | | 2 | | MODELS 5 SPITS |
| | | 1 | | MODELS 3 SPITS |
| 10 | VENTURIE COVE | 3 | GF005 | MODELS 8 SPITS |
| | | 2 | | MODELS 5 SPITS |
| | | 1 | | MODELS 3 SPITS |
| 11 | AIR SLEEVE | 3 | BAGVEN | MODELS 8 SPITS |
| | | 2 | | MODELS 5 SPITS |
| | | 1 | | MODELS 3 SPITS |
| 12 | AIR INLET SLEEVE | 3 | VENECO | MODELS 8 SPITS |
| | | 2 | | MODELS 5 SPITS |
| | | 1 | | MODELS 3 SPITS |
| 13 | TAPERED THREAD INJECTOR | 3 | INJ400 (1) | 1675.8 |
| | | 3 | INJ290 (1) | 1375.8 |
| | | 2 | | 1375.5 |
| | | 1 | | 1375.2 |
| | | 3 | INJ250 / 240 / 165 (1) | 975.8 |
| | | 2 | | 975.5 |
| | | 1 | | 975.2 |
| 14 | INJECTOR HOLDER | 3 | PI6119A | MODELS 8 SPITS |
| | | 2 | | MODELS 5 SPITS |
| | | 1 | | MODELS 3 SPITS |
| 15 | ELBOW JOINT BRASS | 3 | RLC12SM | MODELS 8 SPITS |
| | | 2 | | MODELS 5 SPITS |
| | | 1 | | MODELS 3 SPITS |
| 16 | PIPE VALVE BURNER | 3 | TALU119750 GFMI | MODELS 8 SPITS |
| | | 2 | | MODELS 5 SPITS |
| | | 1 | | MODELS 3 SPITS |
| 17 | GAS VALVE | 3 | ROBS22 | MODELS 8 SPITS |
| | | 2 | | MODELS 5 SPITS |

| REP | DESIGNATION | QTE | REFERENCE | GRANDES FLAMMES MODELS |
|------------|-----------------------|-----|-------------|------------------------|
| | | 1 | | MODELS 3 SPITS |
| 18 | PIPE PILOT VALVE | 3 | TALU652 | MODELS 8 SPITS |
| | | 2 | | MODELS 5 SPITS |
| 19 | PILOT | 1 | | MODELS 3 SPITS |
| | | 3 | V1092A | MODELS 8 SPITS |
| | | 2 | | MODELS 5 SPITS |
| 20 | THERMOCOUPLE | 1 | | MODELS 3 SPITS |
| | | 3 | THER600 | MODELS 8 SPITS |
| | | 2 | | MODELS 5 SPITS |
| 21 | TUBE STOPPER | 1 | BFF2027 | MODELS 3 SPITS |
| 22 | GAS RAMP | 1 | RAMGF8BR | ALL MODELS |
| | | 1 | RAMGF5BR | MODELS 8 SPITS |
| | | 1 | RAMGF2BR | MODELS 5 SPITS |
| 23 | ATLAS COLLAR | 3 | COL26 | MODELS 3 SPITS |
| 24 | BLACK CAST IRON ELBOW | 1 | COU90 | ALL MODELS |
| 25 | NIPPLE ANGLED | 1 | MAM58322 | ALL MODELS |
| 26 | CAST IRON JOINT | 1 | UFT2027 | ALL MODELS |
| 27 | GAS VALVE CHEST | 3 | PLASMANGAZ | ALL MODELS |
| | | 2 | | MODELS 8 SPITS |
| | | 1 | | MODELS 5 SPITS |
| 28 | GAS KNOB | 3 | BOUROB5211 | MODELS 3 SPITS |
| | | 2 | | MODELS 8 SPITS |
| | | 1 | | MODELS 5 SPITS |
| 29 | FRONT GAS EPOXY | 1 | TABG8Mxxx | MODELS 3 SPITS |
| | | 1 | TABG5Mxxx | MODELS 8 SPITS |
| | | 1 | TABG2Mxxx | MODELS 5 SPITS |
| 32 | ROD GAS FRONT | 1 | FERGF75C8FG | MODELS 3 SPITS |
| | | 1 | FERGF75C5FG | MODELS 8 SPITS |
| | | 1 | FERGF75C2FG | MODELS 5 SPITS |
| 34 | ROD LEFT PANEL | 1 | FERGF75C8PG | MODELS 3 SPITS |
| | | 1 | FERGF75C5PG | MODELS 8 SPITS |
| | | 1 | FERGF75C2PG | MODELS 5 SPITS |
| 35 | HINGE | 4 | CHAGF | MODELS 3 SPITS |
| | | 2 | | MODELS 8 SPITS |
| | | 2 | | MODELS 5 and 3 SPITS |
| 36 | HINGE JOINT | 8 | RAINEX C2 | MODELS 8 SPITS |
| | | 4 | | MODELS 5 and 3 SPITS |
| 37 | GLASS DOOR | 2 | GL216B | 1675.8 |
| | | 2 | GL215B | 1375.8 |
| | | 2 | GL214B | 975.8 |
| | | 1 | GL211B | 1375.5 |
| | | 1 | GL210B | 1375.2 |
| | | 1 | GL208B | 975.5 |
| | | 1 | GL207B | 975.2 |
| 38 | GLASS DOOR HANDLE | 2 | BOUT1193 | MODELS 8 SPITS |
| | | 1 | BOUT1193 | MODELS 5 and 3 SPITS |
| 38B | CONNECTOR KNOB CHROME | 2 | RA283 | 8 Spits |
| | | 1 | RA283 | 3 - 5 Spits |
| | | 2 | RA283DOR | 8 Spits |
| 39 | CONNECTOR KNOB GOLDEN | 1 | RA283DOR | 3 - 5 Spits |
| | | 1 | MAXI | ALL MODELS |

| REP | DESIGNATION | QTE | REFERENCE | GRANDES FLAMMES MODELS |
|-----------|------------------------------------|-----|--------------|------------------------|
| 40 | MAXITROL REGULATOR FOR PROPANE GAS | 1 | MAXIPROP | ALL MODELS |
| | TAP on/off (USA) | 1 | ROBONOFF | ALL MODELS |
| 41 | SPIT SUPPORT HIGH | 1 | GF750640CRAP | 1375.6G "CRAPAUDINE" |
| 42 | SPIT SUPPORT LOW | 1 | GF750641CRAP | 1375.6G "CRAPAUDINE" |

(1) See nature of gas

5.3.2 EXPLODED LEFT SIDE



All this information are the property of Rotisol.
 Reproduction partial or in totality are prohibited without authority prior written of company Rotisol.