

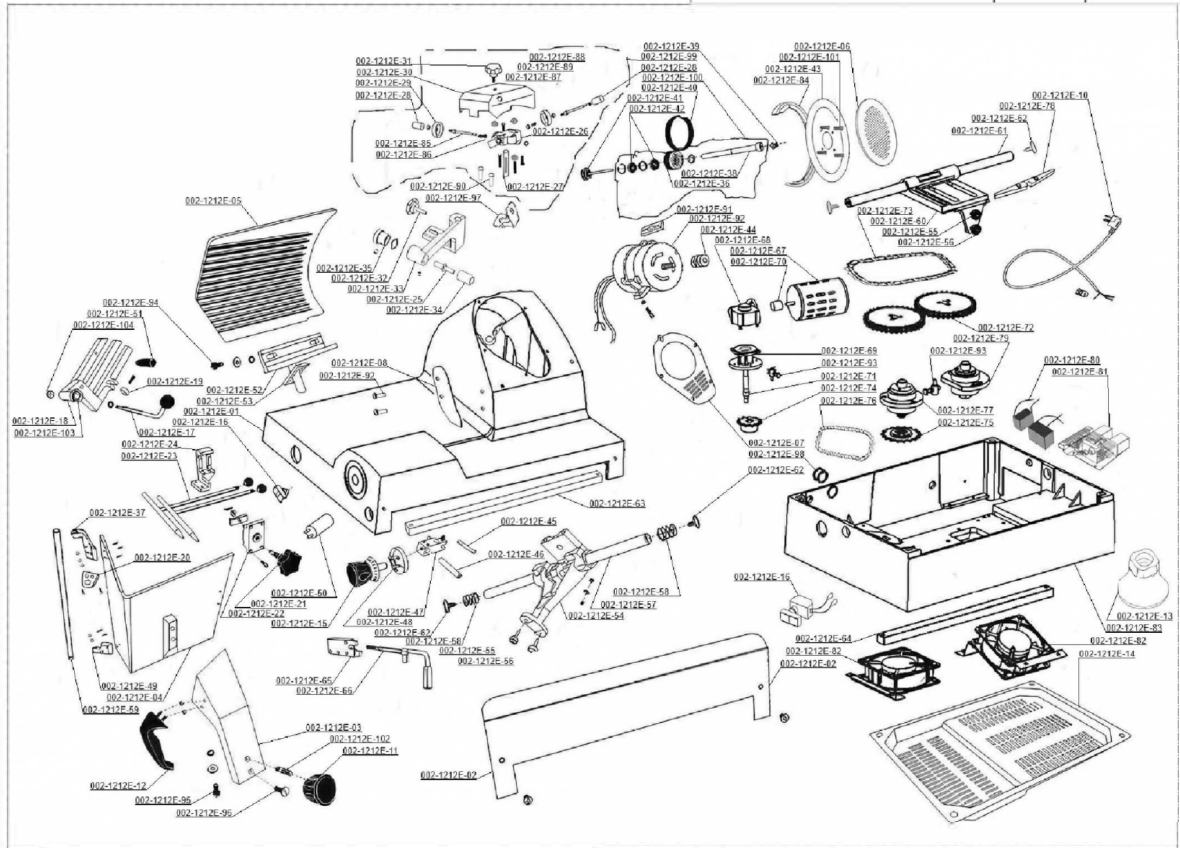
Denomination/Denominación/Dénomination
AUTOMATIC SLICER

Item

1212E

Skylord

Date/fecha/Date: 15/12/2023



Version/Versión/Versão: 03 Last Serial Number/Último N° de Serie/Dernier Numéro de Serie: B00149

Cód.	Descrição	UM
002-1212E-11	CARRIAGE KNOB	By the each
002-1212E-12	HANDLE	By the each
002-1212E-6	BLADE GUARD	By the each
002-1212E-39	KNIFE COVER NUT	By the each
002-1212E-41	COVER TIE ROD	By the each
002-1212E-31	SHARPENER COVER KNOB	By the each
002-1212E-28	SHARPENER SLIP SLEEVE*2	By the each
002-1212E-40	BELT	By the each
002-1212E-26	SHARPENER SUPPORT	By the each
002-1212E-27	SHARPENER COLUMN	By the each
002-1212E-36	PULLEY	By the each
002-1212E-38	PULLEY WHEEL AXLE	By the each
002-1212E-33	SHARPENER FRAME	By the each
002-1212E-8	MEAT DRAWING TEMPLATE	By the each
002-1212E-29	SHARPENER WHEEL	By the each
002-1212E-30	KNIFE SHARPENER COVER	By the each
002-1212E-32	SHARPENER FIXING KNOB	By the each
002-1212E-35	EJECTOR PIN KNOB	By the each
002-1212E-25	SHARPENER PULL FORK	By the each
002-1212E-5	MEAT RETAINER	By the each
002-1212E-52	MEAT RETAINER BRACKET	By the each
002-1212E-53	MEAT RETAINER BRACKET COVER	By the each
002-1212E-49	ELECTRIC CAPACITY	By the each
002-1212E-50	1212E CAPACITOR	By the each
002-1212E-16	POWER SWITCH*2	By the each

Cód.	Descrição	UM
002-1212E-15	SCALE KNOB	By the each
002-1212E-48	CAM	By the each
002-1212E-62	SCREW*4	By the each
002-1212E-54	UPPER TOWING BRACKET	By the each
002-1212E-57	UPPER TOWING BRACKET AXLE	By the each
002-1212E-47	THICKNESS ADJUSTING PLATE	By the each
002-1212E-46	THICKNESS ADJUSTING SLIDING AXLE	By the each
002-1212E-45	THICKNESS ADJUSTING ECCENTRIC WHEEL	By the each
002-1212E-1	OUTER CASING	By the each
002-1212E-58	BUFFER SPRING*2	By the each
002-1212E-18	MEAT PRESS PLATE	By the each
002-1212E-59	MEAT PRESS PLATE AXLE	By the each
002-1212E-2	FRONT PROTECTING PLATE	By the each
002-1212E-3	TRAY SUPPORT	By the each
002-1212E-55	UPPER BEARING OF UPPER TOWING BRACKET*2	By the each
002-1212E-56	ADJUSTING BEARING OF UPPER TOWING BRACKET*2	By the each
002-1212E-63	UPPER TOWING BRACKET SQUARE AXLE	By the each
002-1212E-78	SEPARATOR LOCATING BLOCK	By the each
002-1212E-65	MANUAL SEPARATOR SEAT	By the each
002-1212E-66	SEPARATOR HANDLE	By the each
002-1212E-42	BELT BEARING	By the each
002-1212E-37	FIXING SEAT OF BELT PULLEY AXLE	By the each
002-1212E-34	EJECTOR PIN OF MEAT RETAINER	By the each
002-1212E-43	BLADE	By the each
002-1212E-4	FOOD TRAY	By the each

Cód.	Descrição	UM
002-1212E-21	KNOB	By the each
002-1212E-22	FOOD FIXING PRESS POLE KNOB	By the each
002-1212E-23	FOOD FIXING PRESS POLE	By the each
002-1212E-24	BELOW SEAT OF FOOD FIXING PRESS POLE	By the each
002-1212E-9	ELECTRIC MOTOR 250W (002-312EC-V2-8)	By the each
002-1212E-44	LITTER BELT PULLEY	By the each
002-1212E-7	WATER PROOF FILM	By the each
002-1212E-20	MEAT PRESS PLATE HANGER	By the each
002-1212E-51	MEAT PRESS PLATE AUXILIARY HANDLE	By the each
002-1212E-17	MEAT PRESS PLATE HANDLE	By the each
002-1212E-19	NYLON GUIDE PLATE	By the each
002-1212E-61	LOWER TOWING BRACKET AXLE	By the each
002-1212E-60	LOWER TOWING BRACKET	By the each
002-1212E-10	POWER-LINE	By the each
002-1212E-73	DOUBLE LAYER LARGE CHAIN	By the each
002-1212E-67	ROUND TRIP MOTOR	By the each
002-1212E-70	TRANSMISSION WORM	By the each
002-1212E-68	LOWER SEAT OF TRANSMISSION	By the each
002-1212E-72	LARGE CHAIN PULLEY	By the each
002-1212E-69	UPPER SEAT OF TRANSMISSION	By the each
002-1212E-80	ROUNDRIP MOTOR CAPACITY	By the each
002-1212E-81	CIRCUIT BOARD ASSEMBLY	By the each
002-1212E-13	FOOTING	By the each
002-1212E-83	BRACKET	By the each
002-1212E-79	SHIFT CHAIN SPROCKET ASSEMBLY	By the each

Cód.	Descrição	UM
002-1212E-71	TRANSMISSION WORM WHEEL	By the each
002-1212E-77	DRIVING CHAIN SPROCKET SEAT ASSEMBLY	By the each
002-1212E-74	DRIVING PINION	By the each
002-1212E-64	LOWER TOWING BRACKET SQUARE AXLE	By the each
002-1212E-75	LARGE DRIVING GEAR	By the each
002-1212E-76	DRIVING CHAIN	By the each
002-1212E-82	RADIATOR FAN*2	By the each
002-1212E-14	BOTTOM PLATE	By the each
002-1212E-84	BLADE GUARD RING	By the each
002-1212E-102	COPPER BUSHING	By the each
002-1212E-103	RUBBER RING	By the each
002-1212E-85	FINE SAND WHEEL	By the each
002-1212E-86	WHEEL SPRING	By the each
002-1212E-87	CRUDE GRINDING WHEEL	By the each
002-1212E-88	BALL OF 4.75	By the each
002-1212E-89	CRUDE SAND WHEEL	By the each
002-1212E-90	KNIFE RACK FIXED SCREW	By the each
002-1212E-91	TENSION WHEEL ASSEMBLY	By the each
002-1212E-92	TENSION WHEEL ASSEMBLY NUT	By the each
002-1212E-93	MOTOR BRIQUETTING	By the each
002-1212E-94	MEAT SCRAPER BOLT	By the each
002-1212E-95	ADJUST SEAT ASSEMBLY	By the each
002-1212E-96	ACTIVE CLAPBOARD SCREW	By the each
002-1212E-97	FOOD SALVER SCREW	By the each

Cód.	Descrição	UM
002-1212E-98	TRAY BRACKET SCREW	By the each
002-1212E-99	OIL MIRROR	By the each
002-1212E-100	BELT WHEEL ASSEMBLY	By the each
002-1212E-101	TRAY BEARING COVER	By the each
002-1212E-V2-99	SHARPNER MODULE	By the each
002-1212E-V2-100	BELT WHEEL MODULE	By the each
002-1212E-V2-101	BLADE SCREW	By the each
002-1212E-V2-102	BRACKET BOTTON BOLT	By the each
002-1212E-V2-20	FIXED ARM BASE	By the each
002-1212E-V2-37	TRAY BEARING COVER A	By the each
002-1212E-V2-49	TRAY BEARING COVER B	By the each
002-1212E-V2-94	ACTIVE CLAPBOARD SCREW	By the each
002-1212E-V2-97	BLADE GUARD RING SUPPORT	By the each
002-1212E-V2-91	MOTOR BRIQUETTING	By the each
002-1212E-V2-92	MEAT SCRAPER BOLT	By the each
002-1212E-V2-93	ADJUST SEAT ASSEMBLY	By the each
002-1212E-V2-95	FOOD SALVER SCREW	By the each
002-1212E-V2-96	TRAY BRACKET SCREW	By the each
002-1212E-V2-98	OIL MIRROR	By the each
002-1212E-V2-103	COPPER BUSH	By the each
002-1212E-V2-104	RUBBER RING	By the each

Cód.**Descrição****UM**002-
1212E-
104

RUBBER RING

By the each