
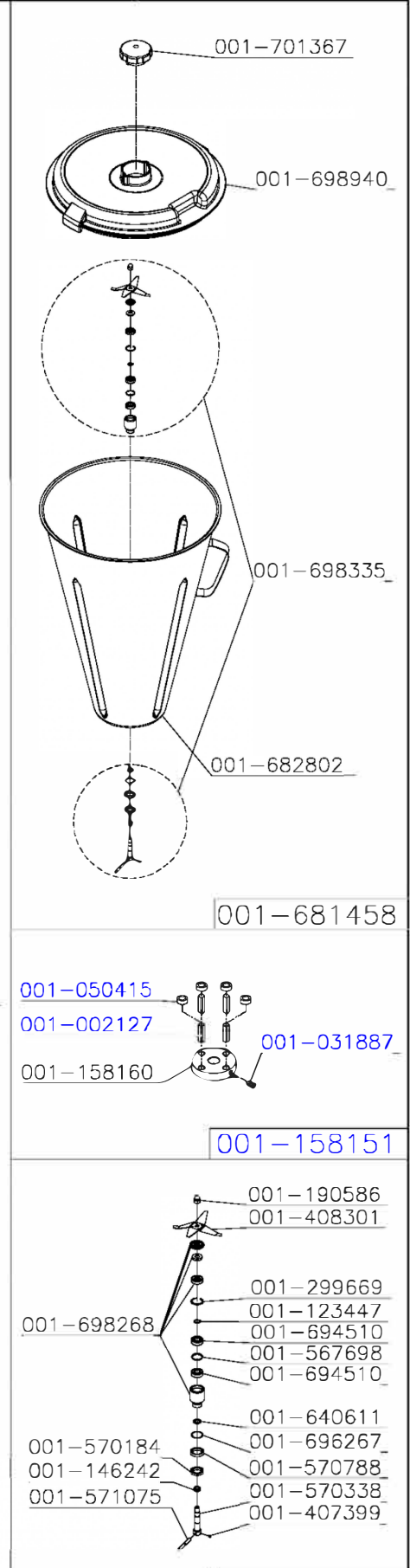
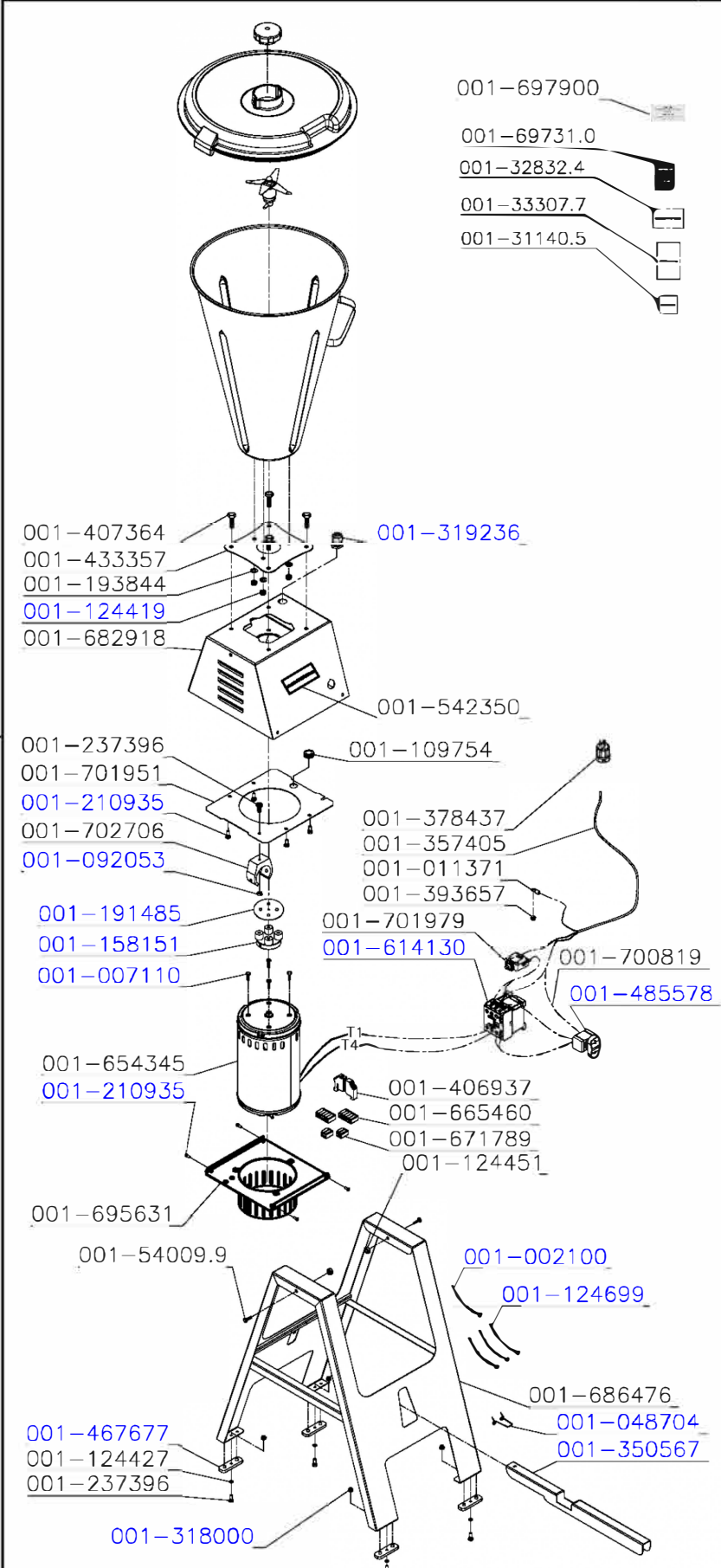


| | | |
|--|------------|---|
| Denomination/Denominaci3n/D3nominacion | Item |  |
| TILTING BLENDER S/S | LAR-25LMBE | |
| LICUADORA BASCULANTE INOX | | |
| MIXEUR INDUSTRIEL BASCULANT | | Date/Fecha/Date:09/04/2024 |



Version/Versión/Version: 11

Last Serial Number/Último N° de Serie/Dernier Numéro de Serie:

| Cód. | Descrição | UM |
|-------------|---|-------------|
| 001-002186 | WIRE PASSER MOLDE 0922231 | By the each |
| 001-020311 | NYLON COVER CN-4472 | By the each |
| 001-031887 | ALLEN SCREW M6X8 | By the each |
| 001-055042 | ATTENTION LABEL 110/220/380V | By the each |
| 001-124699 | CLAMP K22-LM(T-80I) | By the each |
| 001-146242 | VRING 16,5X10,5X5,5 | By the each |
| 001-146544 | FIBER WASHER 20X13X0,7 | By the each |
| 001-200816 | LABEL PER US DEPT OF LABOR | By the each |
| 001-254347 | SAFETY INSTRUCTIONS LABEL | By the each |
| 001-318000 | NUT M4 DIN 985 INOX | By the each |
| 001-002127 | ELASTIC PIN 6X22 - LAR | By the each |
| 001-007110 | SIX SIDED SCREW UNC3/8 | By the each |
| 001-036781 | NYLON COVER CN-4478 | By the each |
| 001-048704 | SPRING FOR TILTING SYSTEM PEDAL - LAR-15PMB/25PMB | By the each |
| 001-050415 | FLANGE PIN COATING - LAR-15PMB | By the each |
| 001-124451 | NUT M8 DIN 934 STAINLESS STEEL | By the each |
| 001-124486 | NUT M6 DIN 934 STAINLESS STEEL | By the each |
| 001-124605 | WASHER L.A8,4 STAINLESS STEEL | By the each |
| 001-139068 | SCREWCAB.ABA.M8X15 DIN 603 STAINLESS STEEL | By the each |
| 001-140414 | WIRE ON/OFF KEY | By the each |
| 001-158151 | COMPLETE CLUTCH - LAR-15PMB | By the each |
| 001-158160 | CLUTCH FLANGE - LB | By the each |
| 001-183512 | SCREW M8X40 DIN 933 SS | By the each |
| 001-191485 | DEFLECTOR | By the each |
| 001-350567 | PEDAL - LAR15PMB | By the each |

| Cód. | Descrição | UM |
|-------------|--|-------------|
| 001-350605 | STAND SET | By the each |
| 001-356131 | PLASTIC CONDUIT | By the each |
| 001-193844 | WASHER 1/4X5/8X1,2MM STAINLESS STEEL | By the each |
| 001-124427 | WASHER L.A6,4 125 INOX | By the each |
| 001-002100 | CLAMP K22 (T-50R) | By the each |
| 001-092053 | NUT M4 DIN 934 | By the each |
| 001-124915 | SCREW M3X10 DIN 84 S/S | By the each |
| 001-128538 | NUT M3 DIN 934 S/S | By the each |
| 001-210935 | SCREW M5X12 DIN 933 S/S | By the each |
| 001-319236 | CORD PRESS PG13,5 LCP13,5BL+ NUT WITH REDUCTOR | By the each |
| 001-328324 | INSTRUCTION MANUAL LABEL | By the each |
| 001-333077 | LABEL WARNING ENG/FRE | By the each |
| 001-311405 | EARTH-WIRE LABEL | By the each |
| 001-338702 | CERTIFIED AMERICAN PLUG 20A | By the each |
| 001-357405 | CABLE 3X3, 3MM2 SJX2M CERTIF | By the each |
| 001-324337 | SCREW M4X8 DIN 7985 STAINLESS STEEL | By the each |
| 001-299669 | RING 28X1,2 DIN 472 FOSF. | By the each |
| 001-109754 | LARGE RUBBER RING | By the each |
| 001-378437 | PLUG AMERICANO CERTIF.30A 125V (4A262 | By the each |
| 001-124419 | NUT N M6 DIN 985 STAINLESS STEEL | By the each |
| 001-011371 | TERMINAL | By the each |
| 001-327182 | RETAINER 22501 DI12XDE.22XL.5 | By the each |
| 001-408301 | BLADE SET (MB - SEAMLESS CUP) | By the each |
| 001-172073 | PFS M8x60 DIN 933 INOX | By the each |
| 001-190586 | FINISHING NUT M10X1,25RE LA.NI | By the each |

| Cód. | Descrição | UM |
|-------------|---|-------------|
| 001-406937 | SWITCH IEC 60715 | By the each |
| 001-467677 | RETANGULAR FOOT(MOL.483753) | By the each |
| 001-294420 | SCREW AUTO BROC.4,2X13 ZB | By the each |
| 001-407364 | SCREW M8X12 DIN 933 STAINLESS STEEL | By the each |
| 001-506656 | MANTENANCE/CLEANING LABEL | By the each |
| 001-123447 | RING 12X1 DIN 471 | By the each |
| 001-237396 | PFS M4x10 DIN 933 INOX | By the each |
| 001-485578 | ON / OFF SWITCH | By the each |
| 001-542350 | SKYFOOD STICKER 120MM LAR-25LMB/PA7 PRO/CR-8L | By the each |
| 001-526843 | ETIQ.E/I COPO MB 145mm 25 | By the each |
| 001-526835 | ETIQ.E/I COPO MB 145mm 15 | By the each |
| 001-419664 | ETIQ.FRAGIL ESPANHOL/INGLES(419664) | By the each |
| 001-614130 | CONTACTOR 110V - PS-10 / PS-22 | By the each |
| 001-407399 | SCREW M5X8 DIN 916 STAINLESS STEEL | By the each |
| 001-433357 | CUP BASE SHEET | By the each |
| 001-514772 | RING D. 27,6X1,3MM FOR TA-02 | By the each |
| 001-531316 | SUPORTE UNIDADE SEG. (MOLDE 536970) | By the each |
| 001-567590 | CENTRAL UNIT | By the each |
| 001-567698 | SPACER WASHER 23.5X27.5X2MM | By the each |
| 001-570184 | SIXSIDED NUT LOW M24X1,5 STAINLESS STEEL | By the each |
| 001-570338 | CENTRAL SHAFT LAR-15/25MB | By the each |
| 001-570788 | SPACER | By the each |
| 001-571075 | GUIDE PIN 6X50 DIN 7 M6 W/UNDERCUT | By the each |
| 001-640611 | LEANING RING | By the each |
| 001-643530 | OVER LID - LAR-15PMB/25PMB | By the each |

| Cód. | Descrição | UM |
|-------------|---|-------------|
| 001-643599 | LID LAR-25 | By the each |
| 001-647446 | ETIQ.DO NOT RUN DRY | By the each |
| 001-654345 | MOTOR 1,5CV 60HZ 115V W (15089282) | By the each |
| 001-654582 | UNID.SEG.115V 60Hz CERT.UL (1,5CV) | By the each |
| 001-658715 | CONJ.FECHAMENTO BASCULANTE | By the each |
| 001-694258 | THERMAL PROTECTOR LAR 4-6-8-10 MBSE | By the each |
| 001-553700 | BEARING 6001 DDU NSK/TK DOUBLE SEAL | By the each |
| 001-678686 | CENTRAL UNIT WITH BEARING | By the each |
| 001-674184 | ANEL RASPADOR(674184) | By the each |
| 001-681458 | COMPLETE CUP LAR-25MB | By the each |
| 001-682802 | LAR-25MBE CUP SET | By the each |
| 001-671789 | CONECTOR EMENDA WAGO 2X0,25-4MM2 | By the each |
| 001-665460 | CONECTOR EMENDA WAGO 5x0,25-4mm2 (221 | By the each |
| 001-686476 | STAND SET | By the each |
| 001-682934 | CS FECHAMENTO GABINETE(682934) | By the each |
| 001-663425 | RELE RPW PTCE05 24-240V 50/60Hz DC (1 | By the each |
| 001-702706 | MACHINED CAPACITOR SUPPORT | By the each |
| 001-700550 | CS CHAPA DE ESPELHO(700550) | By the each |
| 001-682918 | TILTING BLENDER SUPPORT SET STAINLESS STEEL | By the each |
| 001-702346 | PEDAL - LAR15PMB | By the each |
| 001-700133 | RETENTOR + ANEIS (RASPADOR/VEDACAO) | By the each |
| 001-698939 | LID 15 (FE006-111) BLACK UL | By the each |
| 001-697900 | ETIQUETA TAMPA LIQ. EUA | By the each |
| 001-697310 | ETIQ.E/I COPO MB FOOD BLENDER (LAR-25 | By the each |
| 001-137685 | PFS B.4,2X13 DIN 7981 INOX | By the each |

Cód.**Descrição****UM**001-
696267

ANEL ORING 30,31X25,07X2,62MM

By the each

001-
695631

GABINET CLOSING

By the each