



Installation Instructions, Service & Warranty Information

Models Included

- SLG
- ISLG

Important Safeguards/Conventions

This appliance is designed for commercial use. Any servicing other than cleaning and maintenance should be performed by an authorized Wilbur Curtis service center.

- Do NOT immerse the unit in water or any other liquid
- To reduce the risk of fire or electric shock, do NOT open top panel. No user serviceable parts inside. Repair should be done only by authorized service personnel.
- Keep hands and other items away from hot parts of unit during operation.
- Never clean with scouring powders or harsh implements.

Conventions



WARNINGS – To help avoid personal injury



Important Notes/Cautions – from the factory

QUICK START & SETUP – SLG

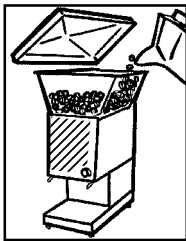
1. Install the grinder on a firm, level base in a location where it can be connected to a grounded electrical outlet of 120VAC, rated at 15 amps.
2. Test the unit by running some whole bean coffee through the grinder. If any problems are encountered, refer to the troubleshooting section complete at www.wilburcurtis.com or call Technical Service at 800-995-0417.

SETUP INSTRUCTIONS – ISLG

1. Turn both units OFF.
2. Place the grinder close enough to the brewer so the InterLock cable will reach the brewer.



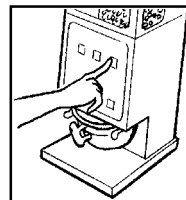
CAUTION: Please use this setup procedure before attempting to use this grinder. Failure to follow the instructions can result in injury or the voiding of the warranty.



OPERATING INSTRUCTIONS – SLG

The SLG grinder is adjusted at the factory to grind 2 - 2.5 ounces of medium roast coffee.

1. Lift off the clear hopper lid and fill the hopper with whole coffee beans.
2. Place a new filter into your brew cone. Slide the brew cone into the brew cone rails on the grinder.
3. Push the START switch on the front panel. The SLG will start to grind coffee into the brew cone.
4. Wait for the grinder motor to stop before removing the brew cone.



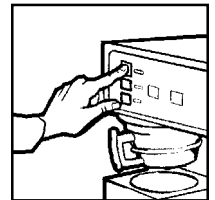
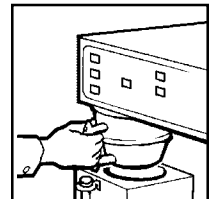
OPERATING INSTRUCTIONS – ISLG

Factory settings: SMALL grind button, set for 5 seconds (1.3 oz). LARGE grind button, set at 15 seconds (3.8 oz). ISLG -13, has additional MEDIUM button set for 10 seconds.

1. Place the brew cone into the rails on the grinder. Press one of the grind buttons on the switch panel. Ground coffee will start to fill the brew cone.
2. When the grinder motor stops, remove the brew cone and slide it into the rails on the brewer.

3. Press the brew switch that displays the blinking indicator light. This starts a brew cycle.

To cancel a brew cycle, press the ON/OFF switch on the brewer. Brew cycles in process will be cancelled.



WARNING TO AVOID SCALDING: Do not remove brewcone while brew light is flashing.

ADJUSTING THE GRINDS

Refer to illustration page 2.

1. Empty hopper of coffee beans. Run grinder to clear grinding burrs of coffee.
2. Open housing cover to locate adjustment screw (8) and lock nut (7). Loosen lock nut.
3. Run motor during adjustment. Turning adjustment screw clockwise will result in a finer grind (if, while turning, you hear the grinding burrs starting to touch, immediately, back off 1/8th turn). Turning counter clockwise will produce a coarser grind.
4. With a screwdriver holding the adjustment screw in place, tighten the locknut.
5. Run some coffee beans through the machine to check the grind adjustment.
6. Replace front cover on machine.

*This adjustment may change the amount of ground coffee dispensed.

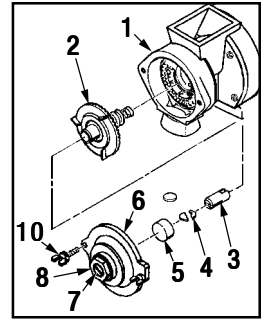


ISO 9001 REGISTERED

WILBUR CURTIS COMPANY
Montebello, CA 90640

CHANGING A BROKEN SHEAR DISK

1. Unplug power cord.
2. Open hopper and remove beans, then open front cover.
3. On grind motor assembly, take out two thumb screws (10) and remove grind cap (6).
4. Pull out grinding burr/feed worm assembly (2). Inner half of grinding burrs will remain with housing.
5. Separate shear cap (5) and shear drive (3). Broken shear disk (4) should fall out of slot in drive.
6. Inspect and clean housing (1) of coffee or debris. Especially, look for something that could have snapped shear disk.
7. Re-insert feed worm and grinding burr on motor shaft.
8. Push shear drive through burr/feed worm assembly and align large slot with tongue on motor shaft.
9. Rotate burr/feed worm assembly to align slot with narrow slot on shear drive.
10. Insert a new shear disk into slot. Cover with the shear cap. Replace grind cap and thumb screws.
11. Return power to unit.



PROGRAMMING THE ISLG

PROGRAMMING THE ISLG

NOTE: Before reprogramming the ISLG, the factory timer settings may be all you need.

The factory settings: The **SMALL** grind button is set for 5 seconds (1.3 oz). The **LARGE** grind button is set at 15 seconds (3.8 oz). On the ISLG -13, there is an additional **MEDIUM** button that is set for 10 seconds.

1. Open timer cover (behind hopper). Find timer and move the switch from **RUN** to **PROGRAM**.
2. Use a stopwatch (recommended) or sweep second hand to time your batches. It is usually quicker to optimize the **SMALL** button first. You will then have a more accurate start point for optimizing the other grind button[s].
3. Place an empty filter and cone under the grinder. With your stopwatch ready, press and hold the **SMALL** front panel button for the desired number of seconds. Weigh the grounds. Record the time and weight. If you are below your target weight, you can reinsert the filter and add time in small increments by pressing and holding the same button. Weigh again and add time as desired to reach your target weight. When you are satisfied with the amount, switch the timer back to **RUN** and re-grind to test the time and weight. Write down the results.
4. When the time/weight programming is completed, install the front cover.



NOTE: Time settings in this table are only approximate. Amounts will vary with grind texture and specific coffee bean. Weigh your output, then make adjustments as necessary

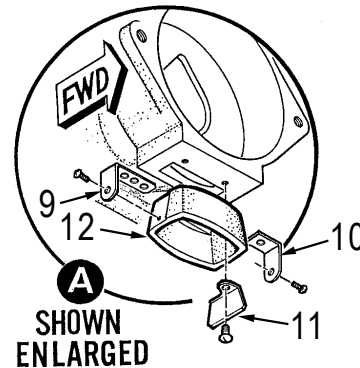
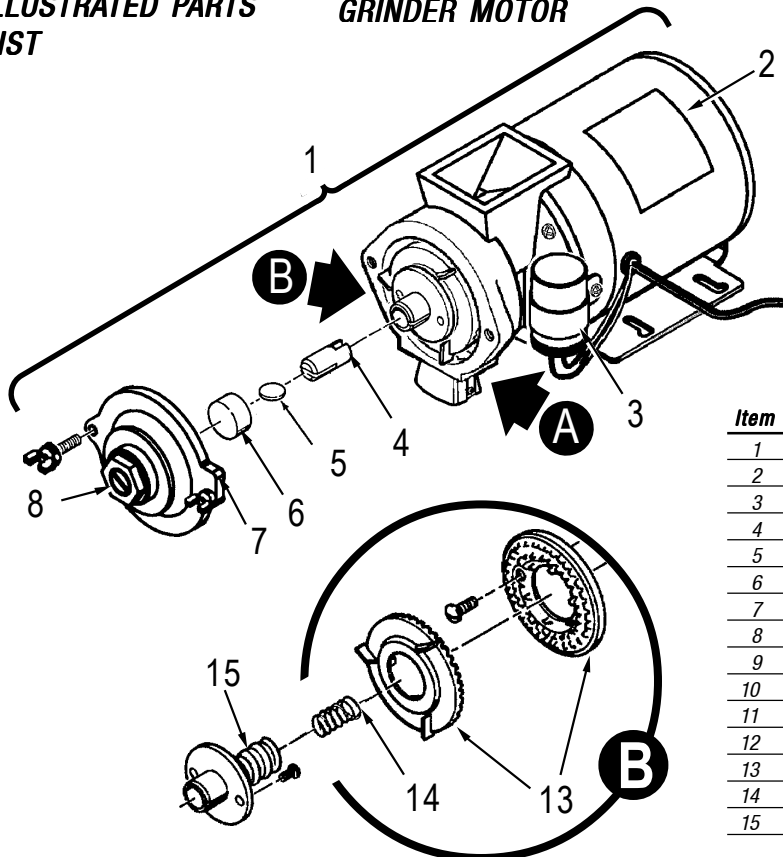
Seconds	Ounces	Seconds	Ounces
4	1.0	15	3.8
5	1.3	20	5.0
6	1.5	25	6.3
7	1.8	29	7.5
8	2.0	34	8.8
10	2.5	39	10.0
12	3.0	43	11.3

SETTING TIMER ON SLG GRINDER

1. Take off timer cover (behind hopper) removing four screws. Locate timer.
2. Timer controls are one high/low switch, allowing you to select a scale on timer dial; outside scale range is .5 through 15, inside scale range is 2 to 60.
3. Test adjustment by grinding some coffee. When amount is satisfactory, reinstall timer cover.

ILLUSTRATED PARTS LIST

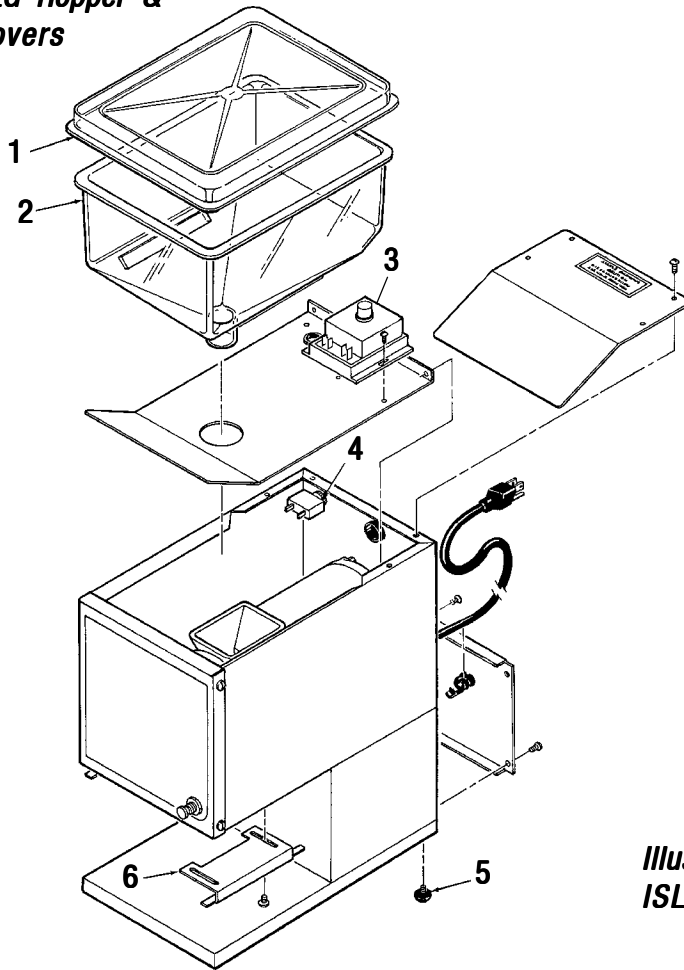
GRINDER MOTOR



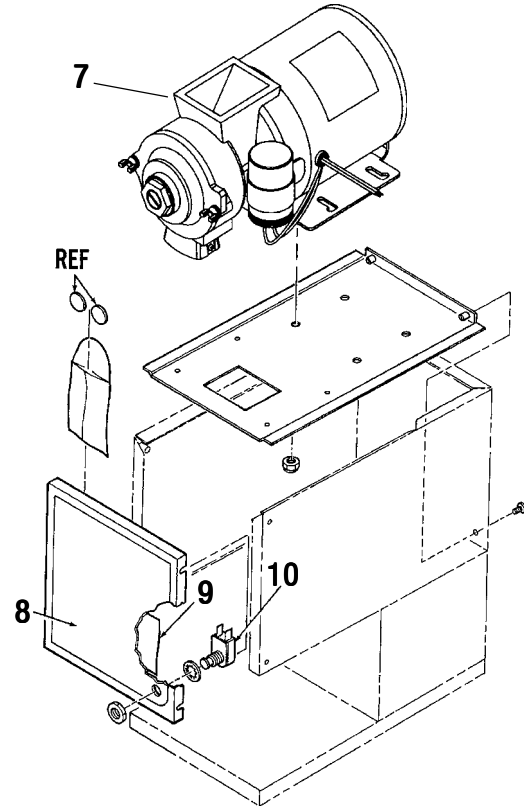
Item	Part No.	Description
1	WC-9135	MOTOR CRUSHING GRINDER ASSY 120VAC
2	WC-91022	MOTOR, GRINDER 120VAC
3	WC-91026	CAPACITOR, COFFEE GRINDER ASSY
4	WC-91024	SHEAR DRIVE COFFEE GRINDER
5	WC-91025	SHEAR DISK
6	WC-91016	CAP. SHEAR DISK GRINDERS
7	WC-91017	COVER, GRINDER HOUSING W/LABEL
8	WC-91015	SCREW & THRUST PIN ADJUSTING ASSY
9	WC-91029	SPRINGBAFFLE LONG, NITRIC ACID COLORING
10	WC-91027	SPRING BAFFLE SHORT, NITRIC ACID COLORING
11	WC-91028	BAFFLE, SPOUT
12	WC-91023	SPOUT, GRINDER HOUSING
13	WC-91045	BURRS, SET CRUSH HIGH FLOW
14	WC-91021	SPRING, TENSION COFFEE GRINDER
15	WC-91020	WORM FEEDING ASSY CCG

PARTS DIAGRAMS

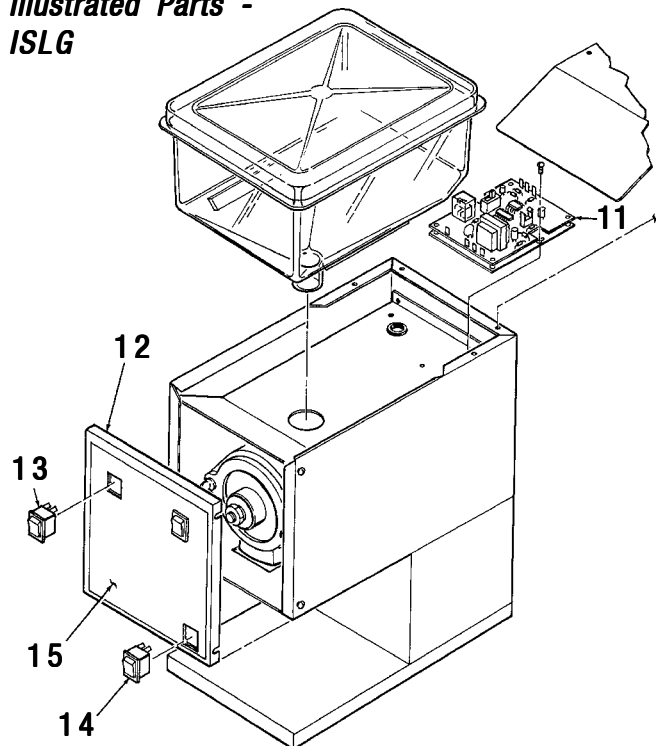
SLG Hopper & Covers



SLG Motor Assembly



Illustrated Parts - ISLG



Item	Part No.	Description
1	WC-9178	HOPPER COVER, CLEAR PLASTIC
2	WC-9169	HOPPER
3	WC- 628	TIMER
4	WC-1504	CIRCUIT BREAKER
5	WC-3502	FOOT, RUBBER WITH 8-32 STUD
6	WC-6550	RAILS, BREW CONE
7	WC-9135	MOTOR, 120V
8	WC-38027	LABEL, FRONT COVER SLG
9	WC-3796	LABEL, INSIDE FRONT COVER ADJ GRIND & SHEAR DISK
10	WC- 101	SWITCH, START
11	WC- 652	TIMER, INTERLOCK
12	WC-6470	COVER, FRONT FOR INTERLOCK
13	WC- 122	SWITCH, 12 CUP, 24 CUP, OR 36 CUP
14	WC- 121	SWITCH, ON/OFF
15	WC-39062	LABEL, SWITCH PANEL TWO BATCH (ISLG -10)
15A	WC-39048	LABEL, SWITCH PANEL THREE BATCH (ISLG -13)

Illustrated Parts Breakdown - ISLG

The parts called out on this illustration are for the ISLG grinder and are the only parts that are different from the SLG grinder. All other parts are identical. Illustrated, is the ISLG -10 (a two batch grinder). The ISLG -13 uses a slightly different switch panel and has an additional switch (a three batch grinder).

