

SOMERSET

CDR-100

Dough Sheeter OPERATIONS MANUAL



WARNING!!! DO NOT CLEAN OR SERVICE THE MACHINE WITHOUT PRESSING THE RED BUTTON AND UNPLUGGING THE ELECTRICAL CORD FROM THE POWER SUPPLY. KEEP YOUR FINGERS AND HANDS FROM THE ROLLER AREA WHEN OPERATING OR SERVICING THE MACHINE. DO NOT OPERATE THE MACHINE WITHOUT THE GUARDS IN PLACE. IF THE MACHINE KEEPS RUNNING WITH SAFETY GUARDS REMOVED, IMMEDIATELY PRESS THE STOP BUTTON AND REMOVE THE PLUG FROM THE POWER SOURCE. CALL THE FACTORY OR A QUALIFIED SERVICE REPRESENTATIVE. DO NOT ATTEMPT TO OPERATE THE MACHINE UNTIL PERMITTED BY THE SERVICE TECHNICIAN.

SOMERSET INDUSTRIES

137 PHOENIX AVE • LOWELL, MA 01852 • USA •
+1-978-667-3355 Email: somerset@smrset.com
Web: www.smrset.com

NOTICE: READ CAREFULLY ALL INSTRUCTIONS BEFORE YOU START:

UNCRATING AND SETUP

Cut off the fastener wrapped around the machine and the base.

Lift the machine straight up out of the wooden base.

Install the machine in its final position or temporarily secure it to a solid surface.

Wipe off any dirt that may have accumulated during shipping. Use a soft cloth.

Check the nameplate for correct voltage and frequency.

Turn the machine's power switch to "OFF".

Plug the machine to the proper power source that matches the nameplate requirements.

Turn the power switch "ON" and check for proper operation of the machine.

!! WARNING !!

NEVER OPERATE THE MACHINE WITHOUT GUARDS IN PLACE!!

KEEP YOUR HANDS AWAY FROM INFEED !!

DO NOT INSERT FOREIGN OBJECTS INTO INFEED !!

DO NOT CLEAN MACHINE WHILE CONNECTED TO ELECTRICAL SUPPLY.!!

WATCH YOUR HANDS AND FINGERS !!

NOTE: The machine will not operate when safety cover is removed.

OPERATING PROCEDURE

The rollers are easily adjustable to any thickness of crust you may need.

Release the adjusting handle, by squeezing the handle.

Move the handle to the left, to decrease the dough thickness.

Move the handle to the right, to increase the dough thickness.

OPERATION

Dust the infeed tray with flour before using the machine.

For best results the dough to be rolled should be at room temperature.

Dust the dough with flour when putting it on the infeed tray.

Follow steps 1 to 3 as in the following diagram:



- Step 1: Place dough on infeed tray
- Step 2: Dough exits
- Step 3: Decrease thickness (move handle to the left)

Repeat steps 1 to 3 until the desired thickness is obtained.

If the dough tears or the machine makes a thumping sound, this indicates that the dough is too thick to go through that particular setting of the rollers or the dough is too cold and stiff and requires longer rest period before use.

IF THE DOUGH GETS STUCK, TURN THE POWER OFF, REMOVE SAFETY COVER THEN REMOVE THE DOUGH.

NEVER ATTEMPT TO MOVE THE DOUGH BY HAND WHILE THE MACHINE IS RUNNING.

CLEANING

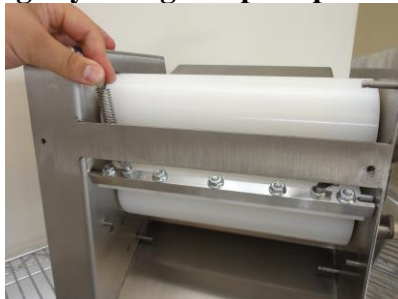
**!! BEFORE CLEANING !!
TURN POWER OFF AND DISCONNECT THE POWER CORD OF THE
MACHINE**

Remove the safety cover by removing the four thumb screws.



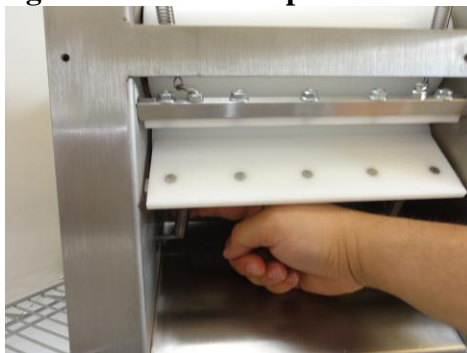
Top Scraper #3

Remove scraper from its mounting pins by pushing scraper downward. Unhook both springs by lifting scraper up and remove it.



Bottom Scraper #2

Unhook both springs attached on scraper and remove it by lifting up.



By removing both scrapers, the whole machine is exposed and ready to be cleaned.

Clean the rolls with dry cloth (never use water).

Wipe rollers with lightly oiled cloth (use vegetable oil).

Wash, dry and apply a thin film of vegetable oil on the edge of the scraper that touches the roller.

Install the scrapers in the opposite order of their removal.

Close the safety cover and secure it with the 4 thumb screws.

Turn the power ON, and the machine is ready for use.

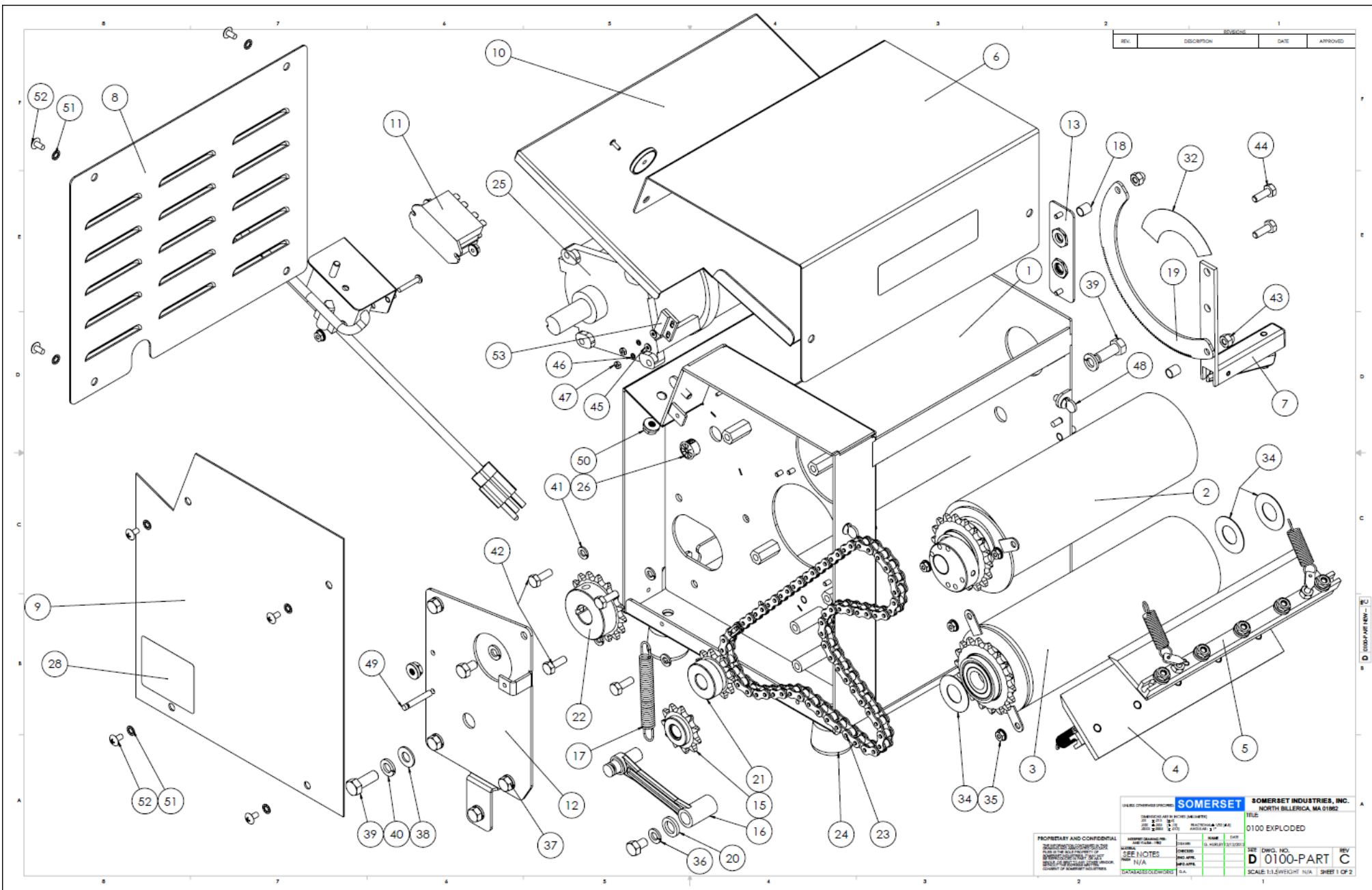
- ◆ **Equipment food-contact surfaces should be clean to sight and touch.**
- ◆ **Equipment food-contact surfaces should be sanitized.**

CAUTION

!! THIS MACHINE IS MAINTENANCE FREE!!

!! NEVER USE OIL OR GREASE ON ANY OF THE PARTS OF THE MACHINE!!

!! ALL PARTS ARE PERMANENT SELF LUBRICATED!!



REV.	DESCRIPTION	DATE	APPROVED

SOMERSET
 SOMERSET INDUSTRIES, INC.
 NORTH BELLERCA, MA 01862

0100 EXPLODED

SCALE: 13.5WEIGHT N/A SHEET 1 OF 2

DATE	BY	CHKD	APP'D

PROPRIETARY AND CONFIDENTIAL
 THIS DOCUMENT IS UNCLASSIFIED
 DATE 08-14-2013 BY 60322 UCBAW/SJS
 GROUP 5 EXCEPT WHERE SHOWN
 OTHERWISE ALL RIGHTS ARE RESERVED


SEE NOTES
 N/A

DATE: 08-14-2013 BY: 60322 UCBAW/SJS

ITEM NO.	PART NUMBER	DESCRIPTION	QTY.
1	0100-010	FRAME, CDR-100 MAIN	1
	0100-011	BASE, LEFT SIDE	1
	3010-219	PEM, FHS-0616-16Z	4
	3010-206	PEM, FHS-420-12	2
	3010-203	PEM, FHS-207-8	2
	3010-201	PEM, YC3-16144	2
	2000-015	LOCATOR PLATE	2
	0100-011	BASE, RIGHT SIDE	1
	0100-012	SIDE, RIGHT	1
	3010-201	PEM, YC3-16144	2
	3010-203	PEM, FHS-207-8	2
	3010-204	PEM, FHS-0518-8	5
	3010-205	PEM, FHS-832-6	4
	3010-212	PEM, FHS-440-6	2
	0500-015	LOCATOR HSG #10	1
	0100-012	SIDE, RIGHT	1
	0100-013	PARTITION	1
	3010-206	PEM, FHS-420-12	1
	0100-013	PARTITION	1
	0100-017	CHANNEL, TOP	1
	0100-034	FOOT, 1.0 TALL X 1.125 DIA	4
	4000-233	SPACER, HEX 0.5 X 1.0	4
	2000-431	SHAFT, ALIGNMENT, IDLER SUPPORT	2
	3000-102	WASHER, LOCK SPLIT 5/16	1
	3000-406	SCREW, 5/16-18 X 3/4 HEXHD GR8	1
2	0100-400	ROLL, ASM UPPER	1
	0100-407	SHAFT, UPPER AND LOWER	1
	0100-457	ROLL, SYNTHETIC/PIPE	1
	0100-403	PIPE, ROLL 11.11	1
	0100-451	ROLL, ETF 00039TIVAR	1
	4000-100	BEARING, R12RS ROLL	2
	3000-225	WASHER, NYLATRON 1.50	2
	2000-412	SPROCKET 41B18H ROLL	1
	0500-318	DISC, TOP COMPLETE	1
	0500-320	DISC, TOP	1
	2000-023	BRACKET, DISC	2
	2000-023	BRACKET, DISK	1
	2000-411	ECCENTRIC, UNIVERSAL	1
	0500-409	ECCENTRIC, UNIVERSAL	1
	3010-302	PIN, 21S 187-125	3
3	0100-402	ROLL, ASM MIDDLE	1
	0100-408	SHAFT, MIDDLE	1
	0100-457	ROLL, SYNTHETIC/PIPE	1
	0100-403	PIPE, ROLL 11.11	1
	0100-451	ROLL, ETF 00039TIVAR	1
	4000-100	BEARING, R12RS ROLL	2
	2000-412	SPROCKET 41B18H ROLL	1
	2000-316	DISC MIDDLE COMPLETE	1

ITEM NO.	PART NUMBER	DESCRIPTION	QTY.
	2000-319	DISC, MIDDLE	1
	2000-023	BRACKET, DISK	2
	3010-302	PIN, 21S 187-125	1
4	0100-501	SCRAPER, COMPLETE #2	1
	0100-521	SHAFT, SCRAPER #2 & #3	1
	0100-511	SCRAPER #2	1
	3010-202	PEM, FHS-0420-16	5
	3000-303	NUT, FLANGE 1/4-20	5
	3000-306	NUT, HEX 1/4-20	2
	3010-100	STUD, SCRAPER 21/32 BENT	2
	4000-251	SPRING, SCRAPER	2
5	0100-502	SCRAPER, COMPLETE #2	1
	0100-521	SHAFT, SCRAPER #2 & #3	1
	0100-512	SCRAPER #3	1
	3010-202	PEM, FHS-0420-16	5
	3000-303	NUT, FLANGE 1/4-20	5
	3000-306	NUT, HEX 1/4-20	2
	3010-100	STUD, SCRAPER 21/32 BENT	2
	4000-251	SPRING, SCRAPER	2
6	0100-121	COVER, SAFETY COMPLETE	1
	4000-150	MAGNET, SAFETY COVER	1
	3010-500	RIVET, 1/8 X .375	1
7	0100-424	HANDLE, ADJUST COMPLETE	1
	0100-420	HANDLE, ADJUST COMPLETE	1
	0500-423	TRIGGER, HANDLE	1
	3010-300	PIN, 21S 187-075	1
	4000-256	SPRING, HANDLE COMPRESSION	1
	3010-216	PEM, FHS-032-6	1
8	0100-301	PANEL, LOUVERED	1
9	0100-302	COVER, HOUSING	1
10	0100-300	TRAY, INTAKE	1
	3010-101	STUD, WELD COPPER 1/4-20 X 1/2	2
11	1100-632	HARNES/RELAY ASSY 120V	1
	2000-632	RELAY 110 VAC	1
	2000-328	BRACKET, RELAY	1
	3010-205	PEM, FHS-832-6	3
	3010-206	PEM, FHS-420-12	1
	5000-230	HARNES, POWER MOLDED	1
	5000-150	RELAY, 120 VAC	1
	3000-416	SCREW, 8-32 X 1 PAN HD PH	1
	3000-300	NUT, FLANGE 8-32	3
12	0500-231	PLATE ECCENTRIC COMPLETE	1
13	2000-629	SWITCH PLATE ASSY	1
	2000-330	PLATE, P.B. SWITCH	1
	3010-205	PEM, FHS-832-6	2
	5000-202	SWITCH POWER RED	1
	5000-203	SWITCH POWER GREEN	1
14	0100-623	COVER, ECCENTRIC	1
	0500-421	COVER, ECCENTRIC COMPLETE	1
15	2000-630	SPROCKET 41B11H IDLER W/BUSHING	1
	2000-430	SPROCKET 41B11H IDLER	1

ITEM NO.	PART NUMBER	DESCRIPTION	QTY.
	4000-550	BUSHING, GARLOCK	1
16	2100-428	ARM, IDLER	1
17	4000-252	SPRING, EXTENSION, 4LG X .5 DIA. X .063	1
18	2000-418	SPACER TUBING	2
19	0100-417	PLATE, ADJUSTING	1
20	4000-011	SPACER .50ID X .78OD X .123 PL	1
21	4000-521	SPROCKET 41B11 W/ BUSHING	1
	4000-501	SPROCKET 41B11H TAKEUP	1
	4000-551	BUSHING 08DU14 GARLOCK	1
22	4000-502	SPROCKET 41B16H X 3/4 W/ KEY	1
23	4000-350	CHAIN 41 RIV 6P	1
24	4000-300	LEG TIP RUBBER	4
25	5000-116	GEAR MOTOR, 1/4 HP BISON (CDR-100 REPLACEMENT)	1
26	5000-278	BUSHING, FINGER .625 HOLE	1
27	5000-276	BUSHING, 90 STR REL HEYCO1320	1
28	5000-311	LABEL, ETL	1
29	5000-312	LABEL, "SOMERSET" 3"	1
30	5000-313	LABEL, "KEEP FINGERS..."	1
31	5000-314	LABEL, "DO NOT OPERATE..."	1
32	5000-316	LABEL, CCW INDICATOR GRADUATED	1
33	5000-317	LABEL, NSF	1
34	3000-225	WASHER, NYLATRON 1.50	3
35	3000-300	NUT, FLANGE 8-32	6
36	3000-102	WASHER, LOCK SPLIT 5/16	6
37	3000-405	SCREW, 5/16-18 X 1/2 HEXHD	6
38	3000-201	WASHER, FLAT 3/8	1
39	3000-409	SCREW, 3/8-16X1 HEXHD SS	2
40	3000-103	WASHER, LOCK SPLIT 3/8	2
41	3000-106	WASHER, LOCK SPLIT 1/4	4
42	3000-417	SCREW, 1/4-28 X 3/4 HEXHD	4
43	3000-302	NUT, ACORN 1/4-20	2
44	3000-404	SCREW, 1/4-20 X 3/4 HEXHD	2
45	3000-204	WASHER, FLAT #4	2
46	3000-104	WASHER, LOCK SPLIT #4	2
47	3000-309	NUT, HEX 4-40	2
48	3000-403	SCREW, 1/4-20 X 1/2 THUMB W/SHOULDER	4
49	3010-151	STUD, SCRAPER 1 3/8"	1
50	3000-303	NUT, FLANGE 1/4-20	4
51	3000-101	WASHER LOCK #10 INT TOOTH	8
52	3000-402	SCREW, 10-32 X 3/8 TRUSS PH SS	8
53	5000-225	SWITCH, ELECTRONIC	1
54	5000-261	ORANGE WIRE NUT	5
55	5000-272	CABLE TIE, 3M	5


SOMERSET INDUSTRIES, INC.
 NORTH BELLINGHAM, MA 01862
 FILE: 0100 EXPLODED
 SER: D 0100-PART C
 SCALE: 1:1 SHEET 2 OF 2

PROPRIETARY AND CONFIDENTIAL
 ALL RIGHTS RESERVED
 SEE NOTES
 DATE: 11/11/11
 DRAWN: J. J. J. J. J.
 CHECKED: J. J. J. J. J.
 APPROVED: J. J. J. J. J.
 DATE: 11/11/11