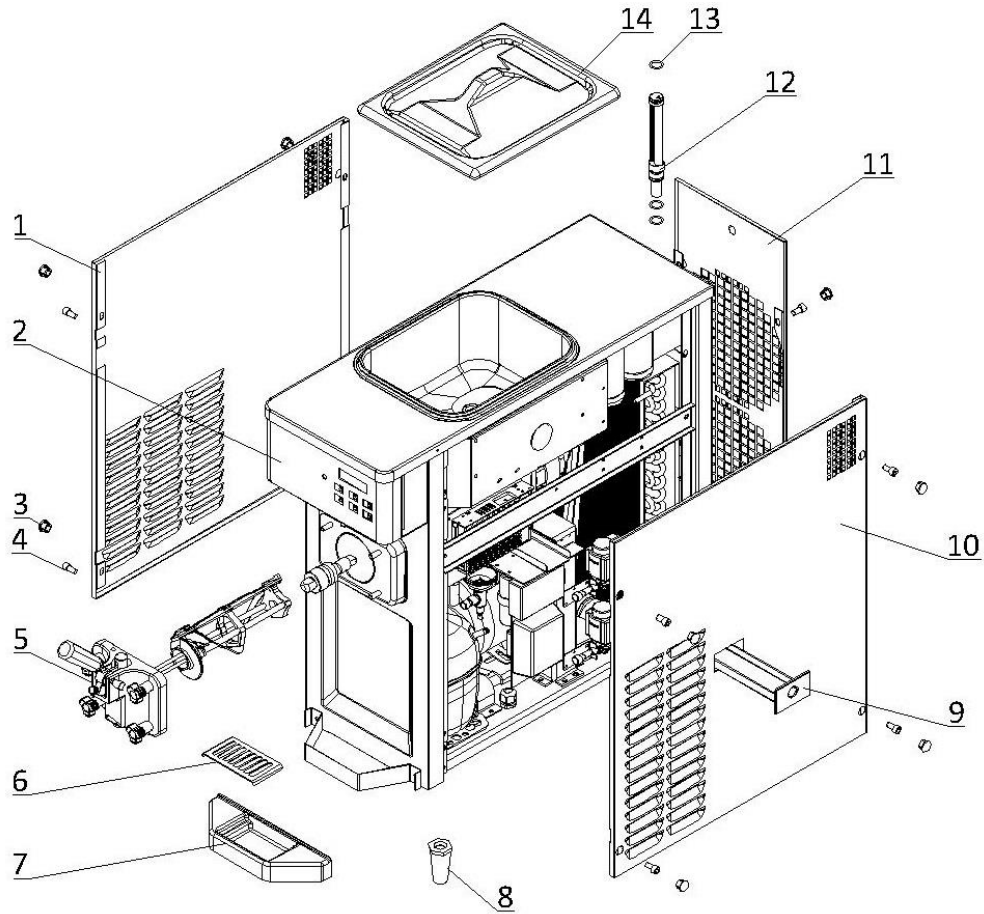


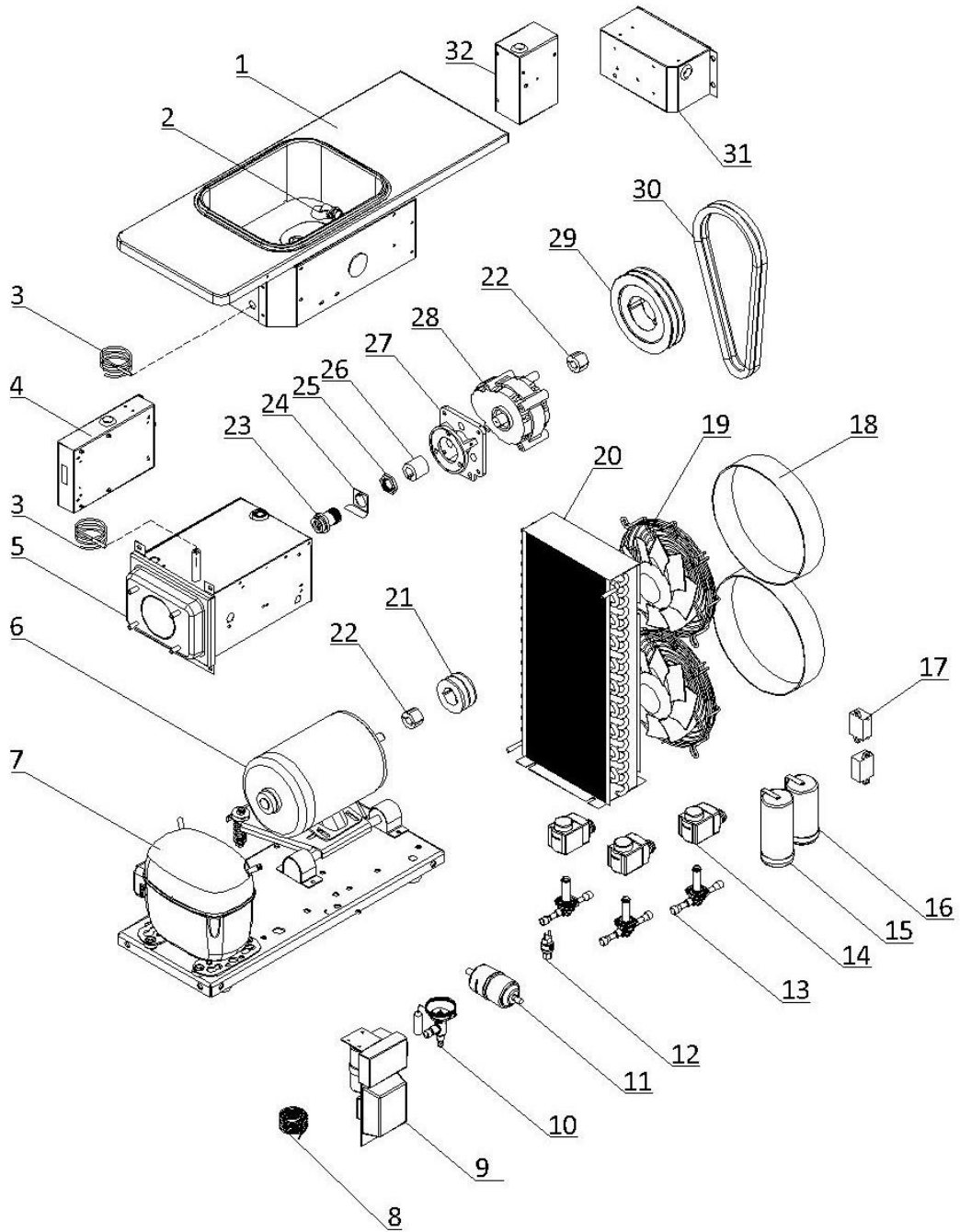
1. External Parts



1. External Parts

| Item | Part Number | Description | Qty. |
|------|-------------------------------|---|------|
| 1 | 2.3.4.28.026 | Panel - Left - 6210-C | 1 |
| 2 | Page 6 | Draw Switch and Front Control Panel | 1 |
| 3 | 3.4.07.01.001 | Bolt Hole Cover | 12 |
| 4 | 3.6.11.041 | Panel Screw - M8x16 | 12 |
| 5 | Page 5 | Dispensing Door and Beater | 1 |
| 6 | 2.3.6.03.024 | Splash Shield - Front Drip Tray - 25.5 mm | 1 |
| 7 | 3.4.04.01.004 | Front Drip Tray - 25.5 mm | 1 |
| 8 | 3.3.05.03.005 | Leg - 68mm | 4 |
| 9 | 3.4.04.02.003 | Internal Drip Tray - 25mm | 1 |
| 10 | 2.3.4.30.025 | Panel - Right - 6210-C | 1 |
| 11 | 2.3.4.23.044 | Panel - Rear - 6210-C | 1 |
| 12 | 2.1.3.39.0010 | Air Tube - SS - Short - V3 | 1 |
| 13 | 3.4.08.01.002 | O-Ring - 18x2.2 | 3 |
| 14 | 3.4.03.01.001 | Hopper Lid - 8L | 1 |

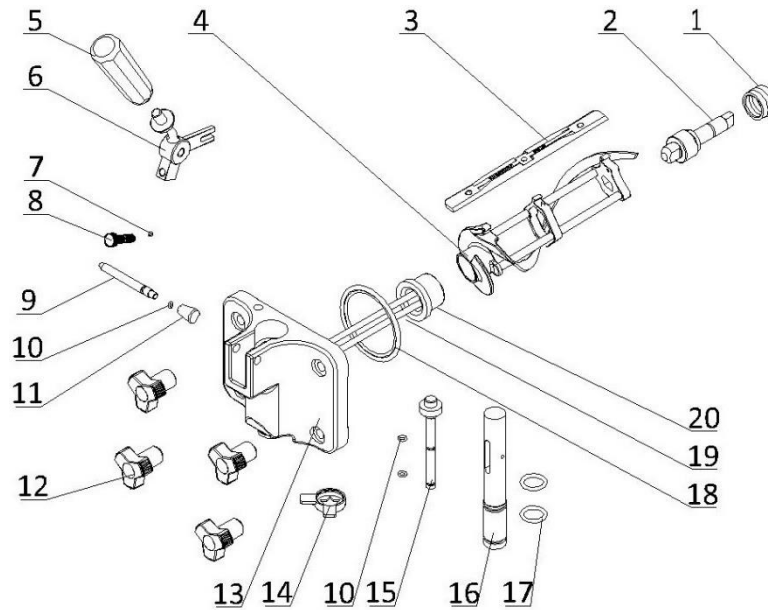
2. Internal Parts



2. Internal Parts

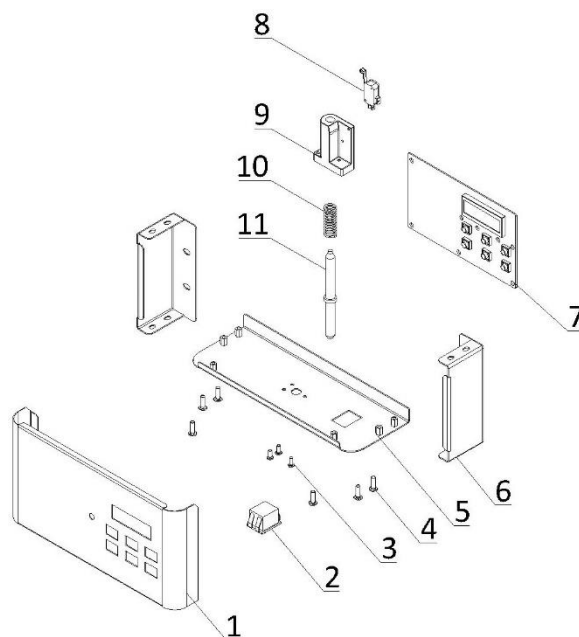
| Item | Part Number | Description | Qty. |
|------|-----------------|--|------|
| 1 | 2.1.1.02.0061 | Hopper Assembly - 6210-C | 1 |
| 2 | 920.1.04.0002 | Mix Low Sensor Assembly | 1 |
| 3 | 3.1.02.13.020 | Temperature Probe - PT100 (With Cap-φ6) | 2 |
| 4 | Page 7 | Control Box | 1 |
| 5 | 2.1.1.06.0115 | Cylinder Assembly - 6210-C | 1 |
| 6 | 3.3.01.07.011 | Motor - 115/60/1 - 450W - K56AC67F41 | 1 |
| 7 | 3.2.01.02.028.A | Primary Compressor - SC18CLX.2 | 1 |
| 8 | 3.2.05.01.008 | Capillary Tube - 2.07×1.07 | 1 |
| 9 | 3.2.01.04.014 | Start Component - Compressor - SC18CLX.2 | 1 |
| 10 | 3.2.04.01.014 | Thermal Expansion Valve - TUB2129 | 1 |
| 11 | 3.2.04.05.002 | Filter Drier - Cylinder - DML083S | 1 |
| 12 | 3.2.04.06.004 | High Pressure Switch - 350~500psi | 1 |
| 13 | 3.2.04.04.001 | Solenoid Valve Body - EVR6 - 10W | 3 |
| 14 | 3.2.04.04.016 | Solenoid Coil - AC110V | 3 |
| 15 | 3.1.02.22.063 | Capacitor - Start - 165V - 416.5μF | 1 |
| 16 | 3.1.02.22.010 | Capacitor - Running - 370V - 50μF | 1 |
| 17 | 3.2.03.04.007-2 | Capacitor - Fan Motor - 450V - 5μF - MKPS | 2 |
| 18 | 2.1.3.50.0074 | Fan Shroud - 75 mm | 2 |
| 19 | 3.2.03.04.007 | Fan Motor - 110-60-1 - YWF4E200S-92/15-GBB-01 | 2 |
| 20 | 3.2.02.01.023 | Main Condenser - Single - 5m ² - 6210-C | 1 |
| 21 | 3.3.04.02.001 | Pulley - Beater Motor - SPA63-2-1008 | 1 |
| 22 | 3.3.04.01.005 | Bushing - 1008-16 | 2 |
| 23 | 3.3.02.02.001 | Rear Shell Bearing - SS - 1.3/1.8qt | 1 |
| 24 | 2.3.6.04.029 | Lock Plate - Rear Shell Bearing - 39mm | 1 |
| 25 | 3.3.02.02.010 | Nut - Rear Shell Bearing | 1 |
| 26 | 3.3.02.04.005 | Coupling Drive - 1.3-1.8qt - 20mm | 1 |
| 27 | 2.1.3.15.0009 | Bracket - Gear Box - 1.3-1.8qt - 89mm | 1 |
| 28 | 3.3.02.01.025 | Gear Box - SS - 75*20 Shaft - 89mm | 1 |
| 29 | 3.3.04.02.021 | Pulley - SPA155-2-1008 | 1 |
| 30 | 3.3.03.01.022 | Belt - Motor to Beater - V-XPA850 | 1 |
| 31 | Page 8 | Electrical Box #1 | 1 |
| 32 | Page 9 | Electrical Box #2 | 1 |

3. Dispensing Door and Beater



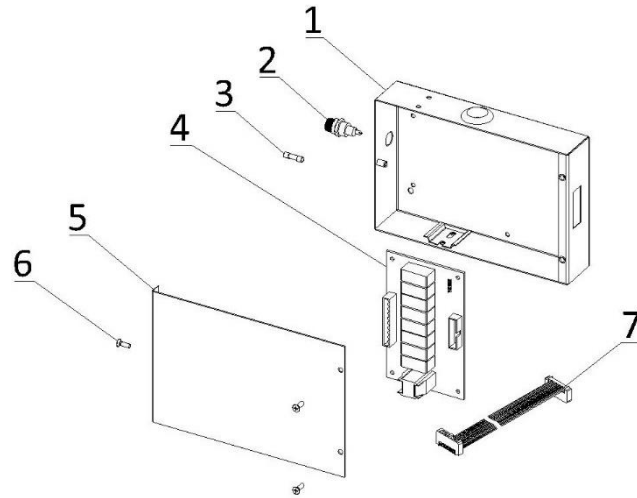
| Item | Part Number | Description | Qty. |
|------|-------------------------------|---|------|
| 1 | 3.4.07.05.002 | Gasket - Drive Shaft | 1 |
| 2 | 2.1.3.25.0001 | Drive Shaft - SS - 1.3-1.8qt | 1 |
| 3 | 3.4.02.01.004 | Scraper Blade - Large - V2 | 1 |
| 4 | 2.1.1.10.0019 | Beater - SS - Small - 1.3qt - V2 | 1 |
| 5 | 3.4.05.01.001 | Handle - Dispensing - SS | 1 |
| 6 | 2.1.3.26.0004 | Seat - Handle - 1F - 1.3-1.8qt | 1 |
| 7 | 3.4.08.01.012 | O-Ring - 3x1.5 | 1 |
| 8 | 3.6.39.008 | Adjustment Screw - Handle - 34mm | 1 |
| 9 | 2.1.3.27.0001 | Retention Pin - Handle - 1F - 1.3-1.8qt | 1 |
| 10 | 3.4.08.01.013 | O-Ring - 5.2x1.9 | 3 |
| 11 | 2.1.3.27.0025 | Nut - Retention Pin - Handle | 1 |
| 12 | 3.4.05.02.012 | Hand Screw - Small - Dispensing | 4 |
| 13 | 2.1.3.14.0002 | Dispensing Door - SS - 1F - 1.3-1.8qt | 1 |
| 14 | 3.4.05.03.004 | Design Cap - Double Triangle - 31mm | 1 |
| 15 | 2.1.3.02.0015 | Prime Plug - SS - Standard | 1 |
| 16 | 2.1.3.01.0013 | Draw Valve - SS - 1F - 6210/6220 | 1 |
| 17 | 3.4.08.01.006 | O-Ring - 16.8x2.4 | 2 |
| 18 | 3.4.08.02.007 | Door Gasket - SS - 1.3-1.8qt | 1 |
| 19 | 2.1.1.11.0003 | Beater Rod - SS - Small - 1.3qt (With O-ring) | 1 |
| 20 | 3.4.01.03.007 | Beater Guide - SS - 1.3-1.8qt - V2 | 1 |

4. Draw Switch and Front Control Panel



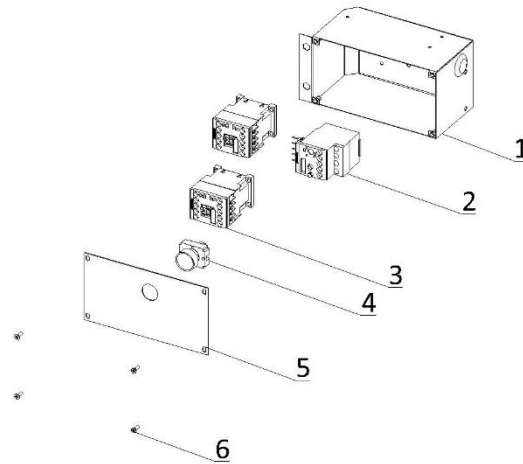
| Item | Part Number | Description | Qty. |
|------|---------------|---|------|
| 1 | 2.3.4.33.030 | Panel - Overhead Front - 6210-C | 1 |
| 2 | 3.1.03.03.003 | Power Switch - KCD2-2 | 2 |
| 3 | 3.6.22.005 | Screw - M4×10 | 3 |
| 4 | 3.6.22.011 | Screw - M5×16 | 6 |
| 5 | 2.3.4.39.052 | Panel - Overhead Bottom - 6210-C | 1 |
| 6 | 2.3.4.37.041 | Panel - Overhead Left & Right - 6210-C | 2 |
| 7 | 920.1.01.0006 | Control Board - SS - V2.152 - Horizontal - V2 | 1 |
| 8 | 3.1.03.01.002 | Micro Switch - KW-7-2 | 1 |
| 9 | 3.4.07.06.008 | Bracket - Micro Switch & Shaft & Spring | 1 |
| 10 | 3.6.03.012 | Spring - Shaft - Draw Switch | 1 |
| 11 | 2.1.3.50.0073 | Shaft - Draw Switch - 6210-C | 1 |

5. Control Box



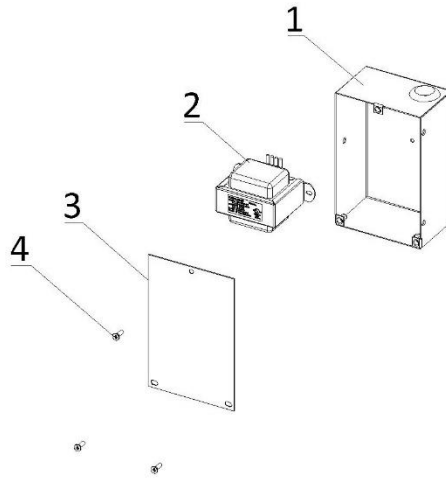
| Item | Part Number | Description | Qty. |
|------|-------------------------------|------------------------------|------|
| 1 | 2.2.4.17.0088 | Control Box - 6210-C | 1 |
| 2 | 3.1.02.08.012 | Seat - Fuse - 250V | 1 |
| 3 | 3.1.02.08.001 | Fuse - 1A | 1 |
| 4 | 2.2.1.01.0007 | Power Board - SS - V2.152 | 1 |
| 5 | 2.2.4.20.0076 | Cover - Control Box - 6210-C | 1 |
| 6 | 3.6.19.002 | Screw - M4×10 | 3 |
| 7 | 3.1.04.01.003 | Ribbon Cable - 20 Pin | 1 |

6. Electrical Box 1



| Item | Part Number | Description | Qty. |
|------|-------------------------------|---------------------------------------|------|
| 1 | 2.2.4.17.0087 | Electrical Box 1 - 6210-C | 1 |
| 2 | 3.1.01.02.012 | Thermal Overload Relay - 3RU6116-1HB0 | 1 |
| 3 | 3.1.01.01.011 | Contactor - 3RT6017-1AF01 | 2 |
| 4 | 3.1.03.04.002 | Reset Button - Thermal Overload | 1 |
| 5 | 2.2.4.20.0075 | Cover - Electrical Box 1 - 6210-C | 1 |
| 6 | 3.6.19.002 | Screw - M4×10 | 4 |

7. Electrical Box 2



| Item | Part Number | Description | Qty. |
|------|-------------------------------|-----------------------------------|------|
| 1 | 2.2.4.17.0089 | Electrical Box 2 - 6210-C | 1 |
| 2 | 3.1.01.04.007 | Transformer - 50W - 50313MW232 | 1 |
| 3 | 2.2.4.20.0077 | Cover - Electrical Box 2 - 6210-C | 1 |
| 4 | 3.6.19.002 | Screw - M4×10 | 3 |