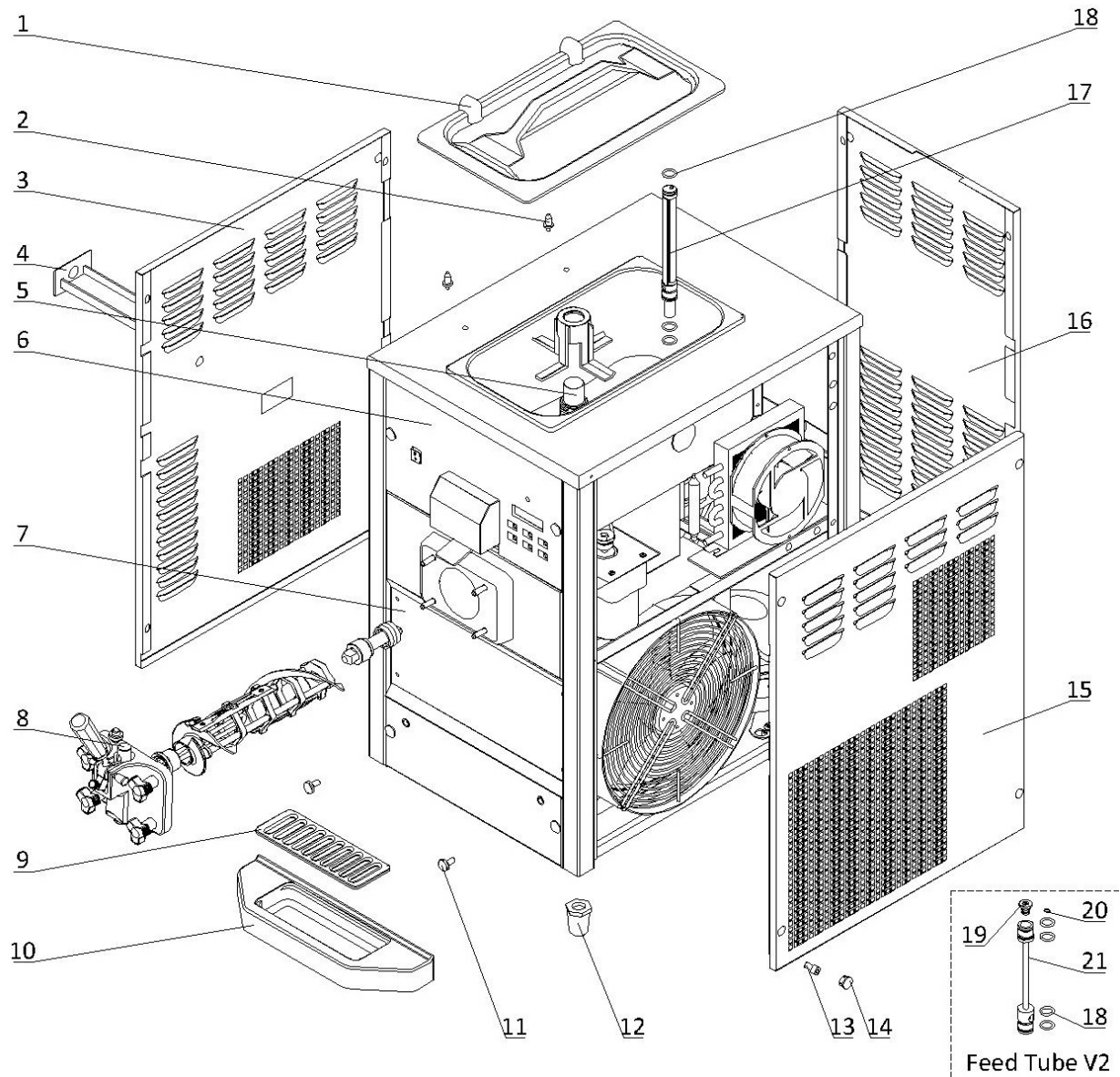


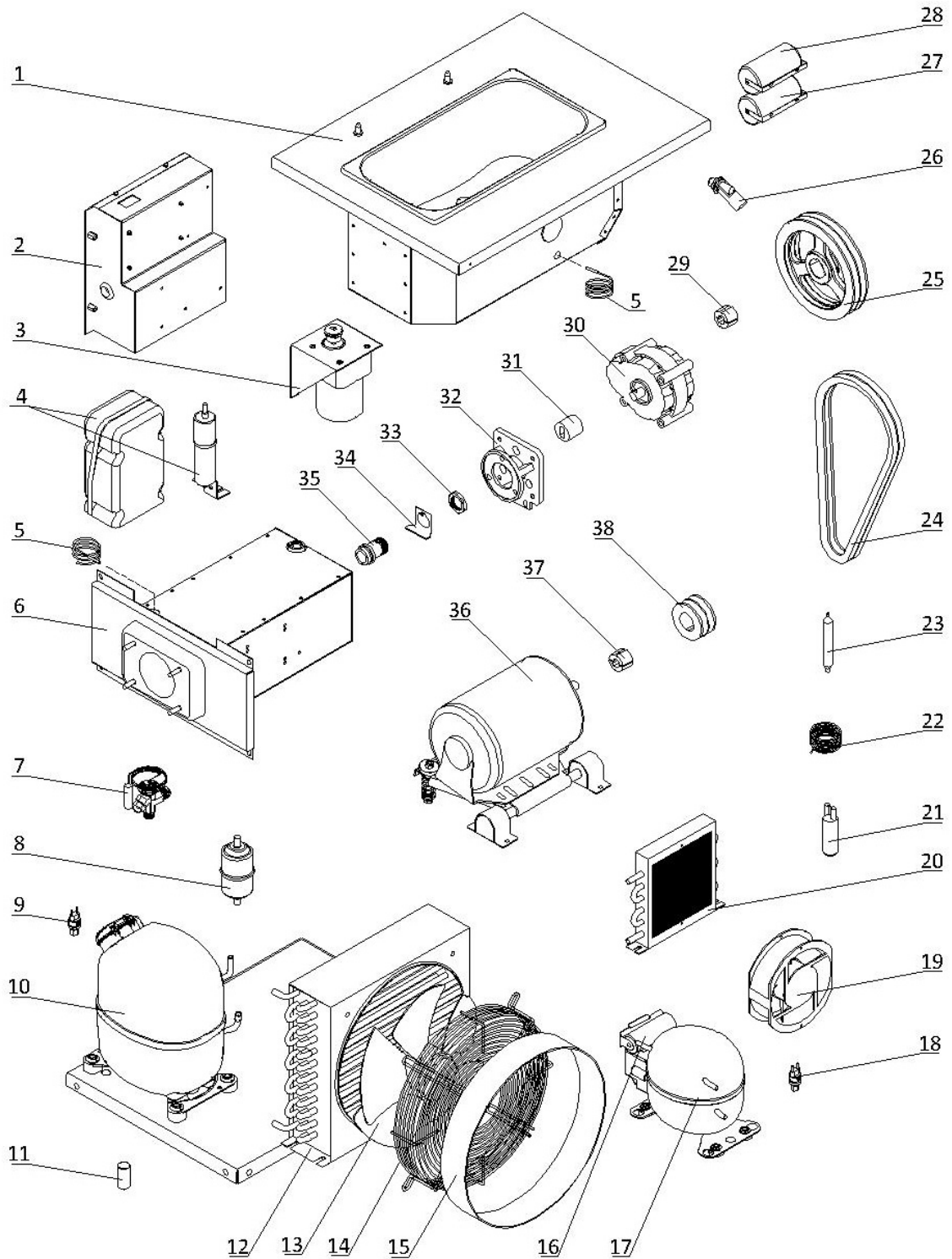
1. External Parts



1. External Parts

| Item | Part Number | Description | Qty. |
|------|-------------------------------|--|------|
| 1 | 3.4.03.01.004 | Hopper Lid - 12-15L | 1 |
| 2 | 3.6.39.011 | Hopper Lid Holder | 2 |
| 3 | 2.3.4.18.007 | Panel - Left - 6228/6228A | 1 |
| 4 | 3.4.04.02.002 | Internal Drip Tray - 28mm | 1 |
| 5 | Page 7 | Hopper Agitator | 1 |
| 6 | Page 6 | Draw Switch and Front control Panel | 1 |
| 7 | 2.3.4.17.007 | Panel - Lower Front - 6228/6228A | 1 |
| 8 | Page 5 | Dispensing Door and Beater | 1 |
| 9 | 3.4.04.01.002-1 | Splash Shield - Front Drip Tray - 37.2mm | 1 |
| 10 | 3.4.04.01.002 | Front Drip Tray - 37.2mm | 1 |
| 11 | 3.6.39.004 | Drip Tray Mounting Bolt | 2 |
| 12 | 3.3.05.03.001 | Leg - 45mm | 4 |
| 13 | 3.6.11.041 | Screw - Hex - Socket - M8x16 | 16 |
| 14 | 3.4.07.01.001 | Bolt Hole Cover | 16 |
| 15 | 2.3.4.20.006 | Panel - Right - 6228/6228A | 1 |
| 16 | 2.3.4.13.003 | Panel - Rear - 6228/6228A | 1 |
| 17 | 2.1.3.39.0011 | Air Tube - SS - Long - V3 | 1 |
| 18 | 3.4.08.01.002 | O-Ring - 18x2.2 | 3 |
| 19 | 2.1.3.23.0001 | Air Tube Cap - SS - Small (Old Version) | 1 |
| 20 | 3.4.08.01.028 | O-Ring - 6.2x1.9 (Old Version) | 1 |
| 21 | 3.4.07.04.020 | Air Tube - SS - Long - V2 (Old Version) | 4 |

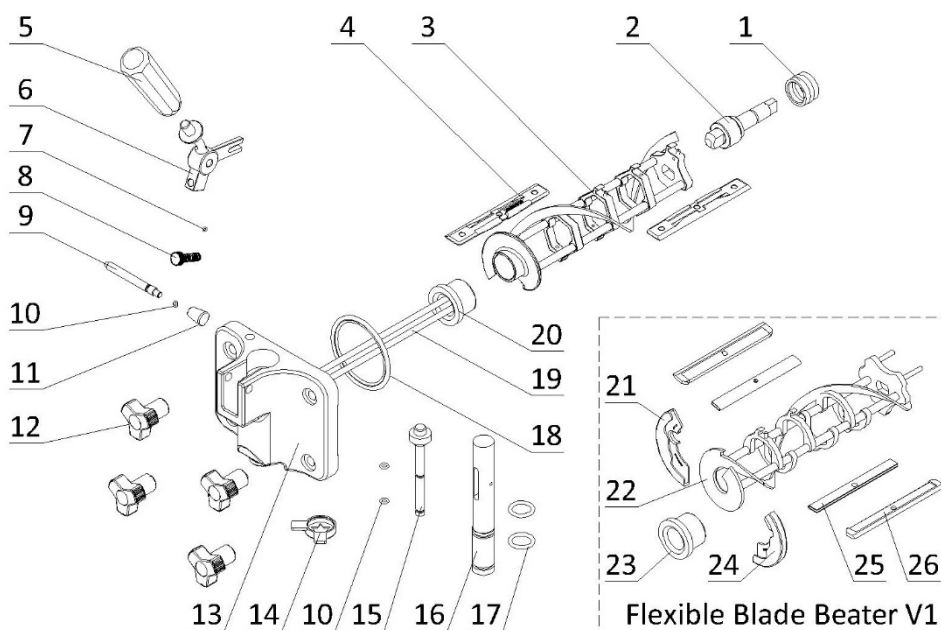
2. Internal Parts



2. Internal Parts

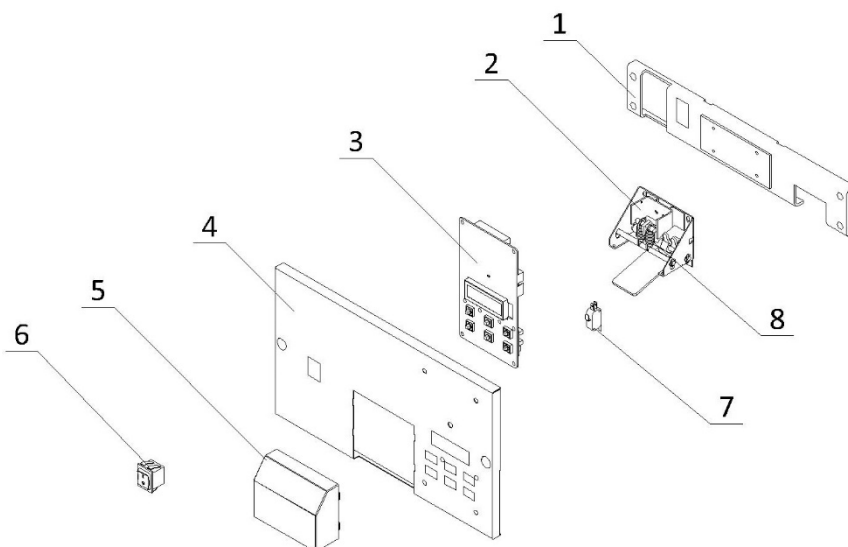
| Item | Part Number | Description | Qty. |
|-------|-----------------|---|------|
| 1 | 2.1.1.03.0015 | Hopper Assembly - 6228 | 1 |
| 2 | Page 8 | Electrical Box | 1 |
| 3 | Page 7 | Agitator Motor Assembly | 1 |
| 4 | 3.2.01.04.011 | Start Component - Compressor - CAJ2446Z | 1 |
| 5 | 3.1.02.13.020 | Temperature Probe - PT100 | 2 |
| 6 | 2.1.1.06.0026 | Cylinder Assembly - 6228/6228A | 1 |
| 7 | 3.2.04.01.011 | Thermal Expansion Valve - TUB2131 (Since 192148) | 1 |
| 8 | 3.2.04.05.002 | Filter Drier - Cylinder - DML083S | 1 |
| 9 | 3.2.04.06.004 | High Pressure Switch - 350~500psi | 1 |
| 10 | 3.2.01.02.033.A | Primary Compressor - CAJ2446Z | 1 |
| 11 | 3.2.03.04.002-2 | Capacitor - Fan Motor - 450V - 1.5μF - CBB60 | 1 |
| 12 | 3.2.02.01.003 | Main Condenser - Single - 5m ² - 375x325x100 | 1 |
| 13/14 | 3.2.03.04.002 | Fan Motor - 220-60-1 - YWF4E-300S | 1 |
| 15 | 2.1.3.50.0001 | Fan Shroud - 155mm | 1 |
| 16 | 3.2.01.01.002-1 | Start Component - Compressor - EM30HHR | 1 |
| 17 | 3.2.01.01.002.A | Auxiliary Compressor - EM30HHR | 1 |
| 18 | 3.2.04.06.003 | High Pressure Switch - 250~350psi | 1 |
| 19 | 3.2.03.01.001 | Fan Motor - BT220-15050S2HL | 1 |
| 20 | 3.2.02.01.001 | Auxiliary Condenser - Single - 0.7m ² | 1 |
| 21 | 3.2.04.07.001 | Suction Accumulator - 25×100×0.6 | 1 |
| 22 | 3.2.05.01.002 | Capillary Tube - 2×0.7 | 1 |
| 23 | 3.2.04.05.001 | Filter Drier - Hopper - 16×2.2×120 | 1 |
| 24 | 3.3.03.01.018 | Belt - Motor to Beater - V-XPA982 | 1 |
| 25 | 3.3.04.02.007 | Pulley - Gear Box - SPA182-2-1008 | 1 |
| 26 | 920.1.04.0002 | Mix Low Sensor Assembly | 1 |
| 27 | 3.1.02.22.061 | Capacitor - Start - 330V - 267.5μF | 1 |
| 28 | 3.1.02.22.009 | Capacitor - Running - 370V - 25μF | 1 |
| 29 | 3.3.04.01.005 | Bushing - 1008-16 | 1 |
| 30 | 3.3.02.01.023 | Gear Box - SS - 45*20 Shaft - 89mm (Since 190181) | 1 |
| 31 | 3.3.02.04.005 | Coupling Drive - 1.3-1.8qt - 20mm | 1 |
| 32 | 2.1.3.15.0009 | Bracket - Gear Box - 1.3-1.8qt - 89mm | 1 |
| 33 | 3.3.02.02.010 | Nut - Rear Shell Bearing | 1 |
| 34 | 2.3.6.04.029 | Lock Plate - Rear Shell Bearing - 39mm | 1 |
| 35 | 3.3.02.02.001 | Rear Shell Bearing - SS - 1.3/1.8qt | 1 |
| 36 | 3.3.01.05.003 | Motor - 220/60/1 - 900W - K56AC63F41 | 1 |
| 37 | 3.3.04.01.006 | Bushing - 1108-16 | 1 |
| 38 | 3.3.04.02.003 | Pulley - Beater Motor - SPA71-2-1108 | 1 |

3. Dispensing Door and Beater



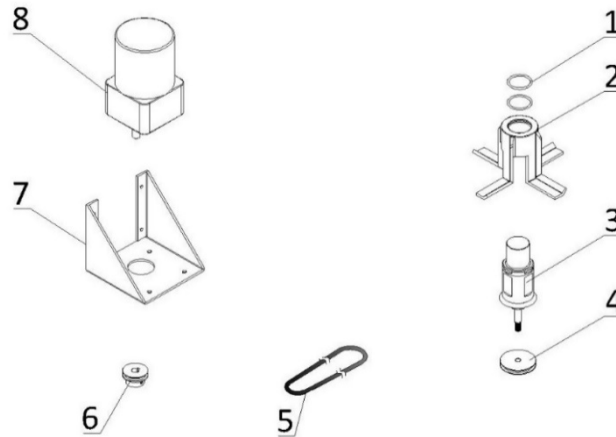
| Item | Part Number | Description | Qty. |
|------|-------------------------------|---|------|
| 1 | 3.4.07.05.002 | Gasket - Drive Shaft | 1 |
| 2 | 2.1.3.25.0001 | Drive Shaft - SS - 1.3-1.8qt | 1 |
| 3 | 2.1.1.10.0017 | Beater - SS - Medium - 1.8qt - V2 | 1 |
| 4 | 3.4.02.01.005 | Scraper Blade - Small - V2 | 2 |
| 5 | 3.4.05.01.001 | Handle - Dispensing - SS | 1 |
| 6 | 2.1.3.26.0004 | Seat - Handle - 1F - 1.3-1.8qt | 1 |
| 7 | 3.4.08.01.012 | O-Ring - 3x1.5 | 1 |
| 8 | 3.6.39.009 | Adjustment Screw - Handle - 22mm | 1 |
| 9 | 2.1.3.27.0001 | Retention Pin - Handle - 1F - 1.3-1.8qt | 1 |
| 10 | 3.4.08.01.013 | O-Ring - 5.2x1.9 | 3 |
| 11 | 2.1.3.27.0025 | Nut - Retention Pin - Handle | 1 |
| 12 | 3.4.05.02.012 | Hand Screw - Small - Dispensing | 4 |
| 13 | 2.1.3.14.0002 | Dispensing Door - SS - 1F - 1.3-1.8qt | 1 |
| 14 | 3.4.05.03.004 | Design Cap - Double Triangle - 31mm | 1 |
| 15 | 2.1.3.02.0016 | Prime Plug - 6228/6228A | 1 |
| 16 | 2.1.3.01.0002 | Draw Valve - SS - 1F - 6228/6228A | 1 |
| 17 | 3.4.08.01.006 | O-Ring - 16.8x2.4 | 2 |
| 18 | 3.4.08.02.007 | Door Gasket - SS - 1.3-1.8qt | 1 |
| 19 | 2.1.1.11.0001 | Beater Rod - SS - 1.8qt | 1 |
| 20 | 3.4.01.03.007 | Beater Guide - SS - 1.3-1.8qt - V2 | 1 |
| 21 | 3.4.01.01.002 | Shoe - Left Small - 1.3-1.8qt (Old Version) | 1 |
| 22 | 2.1.1.10.0002 | Beater - SS - Medium - 1.8qt (Old Version) | 1 |
| 23 | 3.4.01.03.001 | Beater Guide - SS - 1.3-1.8qt (Old Version) | 1 |
| 24 | 3.4.01.02.002 | Shoe - Right Small - 1.3-1.8qt (Old Version) | 1 |
| 25 | 2.3.4.04.001 | Clip - Scraper Blade - 1.8qt (Old Version) | 1 |
| 26 | 3.4.02.01.002 | Plastic - Scraper Blade - 1.8qt (Old Version) | 1 |

4. Draw Switch and Front Control Panel



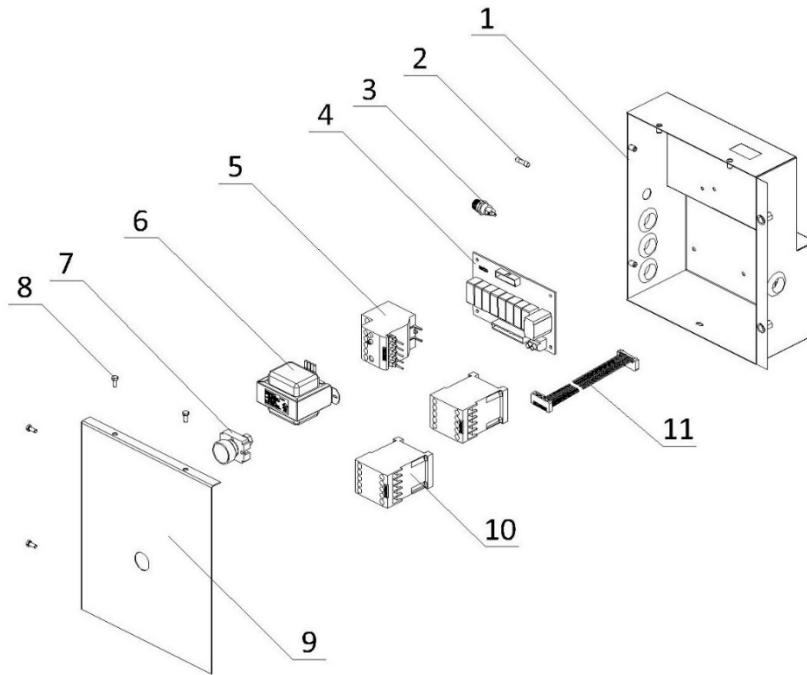
| Item | Part Number | Description | Qty. |
|------|-------------------------------|--|------|
| 1 | 2.2.4.24.0006 | Bracket - Draw Switch Assembly - 1F -1.8qt | 1 |
| 2 | 2.1.1.19.0005 | Draw Switch Assembly - 1F -1.8qt | 1 |
| 3 | 2.2.1.01.0004 | Control Board - SS - V2.152 - Standard | 1 |
| 4 | 2.3.4.07.002 | Panel - Draw Switch - 6228/6228A | 1 |
| 5 | 3.4.07.07.004 | Switch Cover - Standard | 1 |
| 6 | 3.1.03.03.003 | Power Switch - KCD2-2 | 1 |
| 7 | 3.1.03.01.004 | Micro Switch - KW-7-9 | 1 |
| 8 | 3.6.02.002 | Spring - Draw Switch Assembly | 2 |

5. Hopper Agitator



| Item | Part Number | Description | Qty. |
|------|---------------|--|------|
| 1 | 3.4.08.01.034 | O-Ring - 31×2 | 2 |
| 2 | 2.1.1.23.0002 | Blade - Hopper Agitator - Standard - V2 | 1 |
| 3 | 2.1.1.12.0001 | Agitator Assembly - 129mm | 1 |
| 4 | 2.1.4.02.017 | Pulley - Hopper Agitator - Single - 47.6mm | 1 |
| 5 | 2.1.4.08.045 | Belt - Hopper Agitator - 415mm | 1 |
| 6 | 3.3.04.04.006 | Pulley - Hopper Agitator - Drive - 30mm | 1 |
| 7 | 2.3.4.45.007 | Bracket - Agitator Motor - 110mm | 1 |
| 8 | 3.3.01.01.006 | Motor - Agitator - 220V - YN80-25-6G | 1 |

6. Electrical Box



| Item | Part Number | Description | Qty. |
|------|---------------|---------------------------------------|------|
| 1 | 2.2.4.17.0007 | Electrical Box - 6228/6228A | 1 |
| 2 | 3.1.02.08.002 | Fuse - 0.5A | 1 |
| 3 | 3.1.02.08.012 | Seat - Fuse - 250V | 1 |
| 4 | 2.2.1.01.0007 | Power Board - SS - V2.152 | 1 |
| 5 | 3.1.01.02.011 | Thermal Overload Relay - 3RU6116-1GB0 | 1 |
| 6 | 3.1.01.04.007 | Transformer - 50W - 50313MW232 | 1 |
| 7 | 3.1.03.04.002 | Reset Button - Thermal Overload | 1 |
| 8 | 3.6.19.001 | Screw - M4x8 | 4 |
| 9 | 2.2.4.20.0007 | Cover - Electrical Box - 6228/6228A | 1 |
| 10 | 3.1.01.01.010 | Contactor - 220V - 3RT6017-1AN21 | 2 |
| 11 | 3.1.04.01.003 | Ribbon Cable - 20 Pin | 1 |