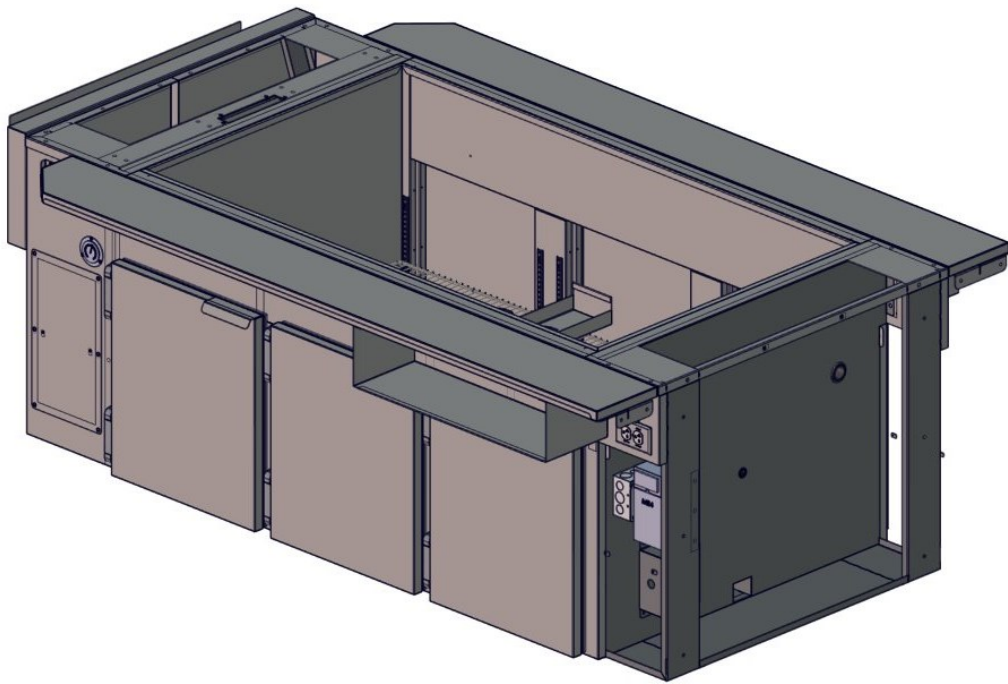




# NGK Sandwich Station

NG014000-200

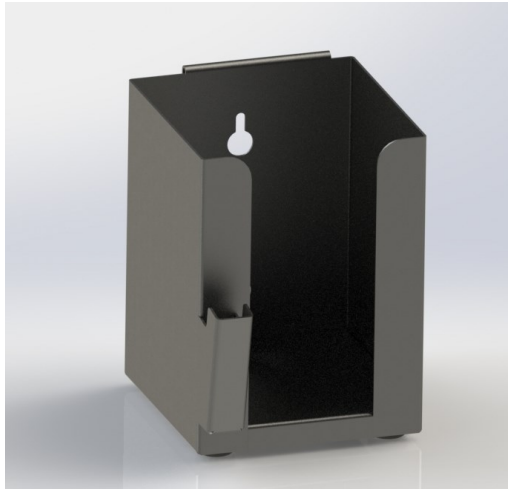


## Replacement Parts Catalog

**CF010055-1-SW57**



## **PRODUCT DETAILS**



### **Function**

- **Chili Lid Holder**

### **Features**

- **Hemmed bracket and keyhole cut outs for easy mounting**
- **Built in pencil holder**

**CF010055-1-SW57**

**Dimensions: H: 6 1/4", W: 4 1/2", D: 5 3/4"**

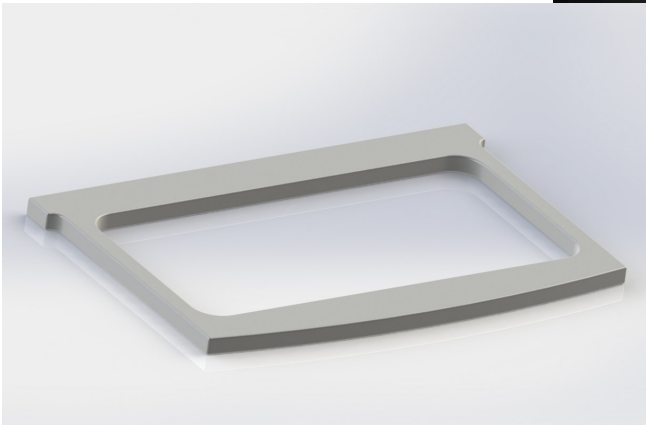
**Weight: 1.86 lbs**

***NGK Chili Lid Holder***

**SW010054-POLY**



**PRODUCT DETAILS**



**Function**

- **1/6<sup>th</sup> Size Pan Slide**

**Features**

- **White Ziplite material for easy cleaning**

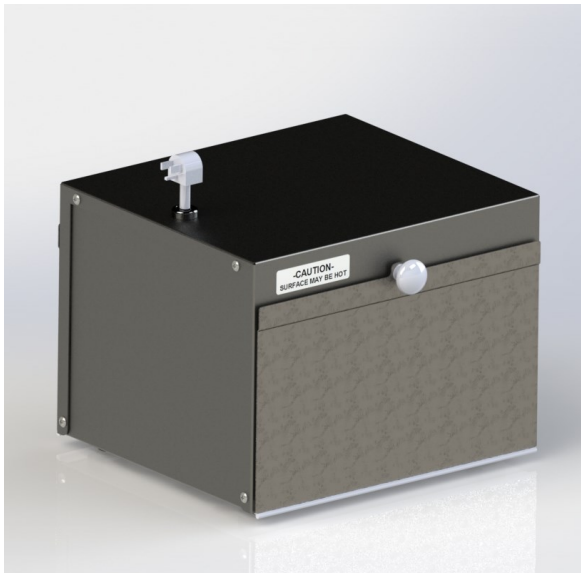
**SW010054-POLY**

***NGK Shelf Divider***

**NG014300**



## PRODUCT DETAILS



### Function

- Tortilla Warmer

### Features

- LED signaled Rocker switch
- 120 volt .21 amp power supply
- 25 watts of heating power

**NG014300**

**Dimensions: H: 9 3/4", W: 12 3/4", D: 13 1/8"**

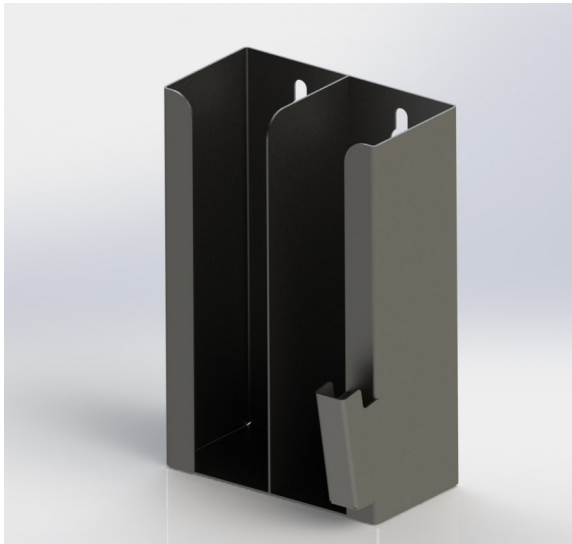
**Weight: 20.02 lbs**

***NGK Tortilla Warmer***

**NG019010**



## **PRODUCT DETAILS**



**NG019010**

**Dimensions: H: 8", W: 5 1/4", D: 3 3/4"**

**Weight: 1.86 lbs**

### **Function**

- **Sauce Cup Holder**

### **Features**

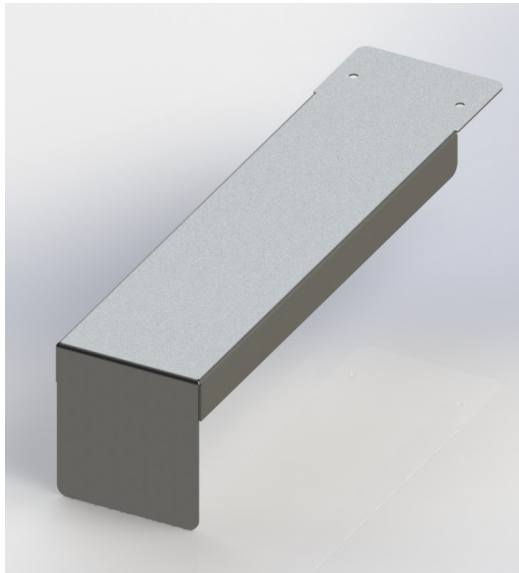
- **Built in pencil holder**
- **Keyhole openings for easy mounting**

***NGK Sauce Cup Holder***

**NG019013**



**PRODUCT DETAILS**



**Function**

- **Cord Cover For MPC**

**NG019013**

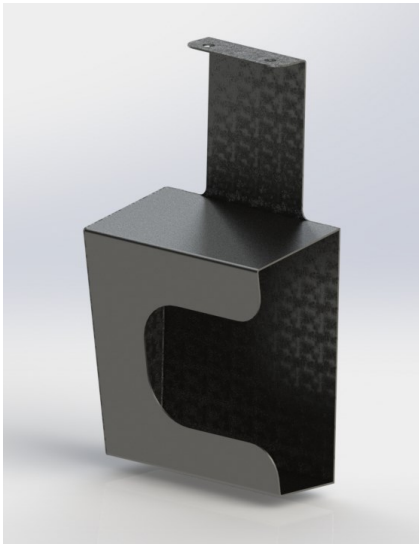
**Dimensions: H: 3 3/4", W: 3 1/2", D: 3 3/4"**

**NGK MPC Cord Cover**

**NG019016**



## **PRODUCT DETAILS**



**NG019016**

**Dimensions: H: 13", W: 7", D: 6 5/8"**

**Weight: 3.1 lbs**

### **Function**

- **Pan Lid Holder**

### **Features**

- **Holds night covers for 1/6th size pans**

***NGK Pan Lid Holder***

**SW010071-DUAL**



**PRODUCT DETAILS**



**Function**

- **Dual Serve Bun Box Holder**

**Features**

- **Three tiers for multiple box sizes**
- **Double sided access**

**SW010071-DUAL**

**Dimensions: H: 13 5/8", W: 8 3/4", D: 11 7/8"**

**Weight: 13.19 lbs**

***NGK Dual Serve Bun Box Holder***

**SW010077**



## **PRODUCT DETAILS**



### **Function**

- **Tong Holder**

### **Features**

- **Clips on to over structure for easy mounting**
- **Easily cleanable**

**SW010077**

**Dimensions: H: 1 11/16", W: 1 1/2", D: 3 3/4"**

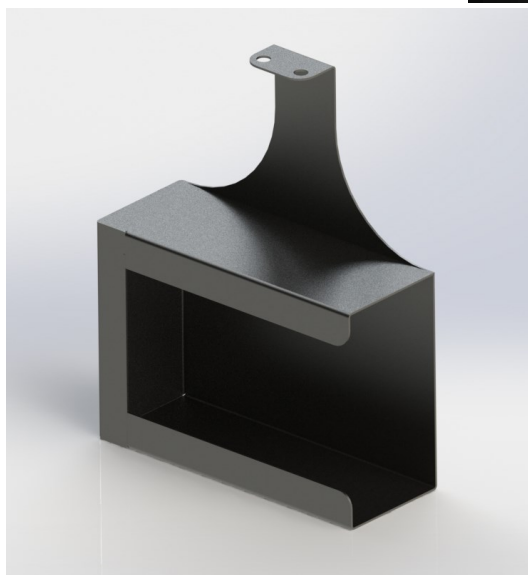
**Weight: .33 lbs**

***NGK Tong Holder***

**SW010086-HANG**



**PRODUCT DETAILS**



**Function**

- **Grab Wrap Holder**

**Features**

- **Easy access Grab Wrap Holder**

**SW010086-HANG**

**Dimensions: H: 10 <sup>3</sup>/<sub>4</sub>" , W: 8 <sup>1</sup>/<sub>2</sub>" , D: 3 <sup>1</sup>/<sub>4</sub>"**

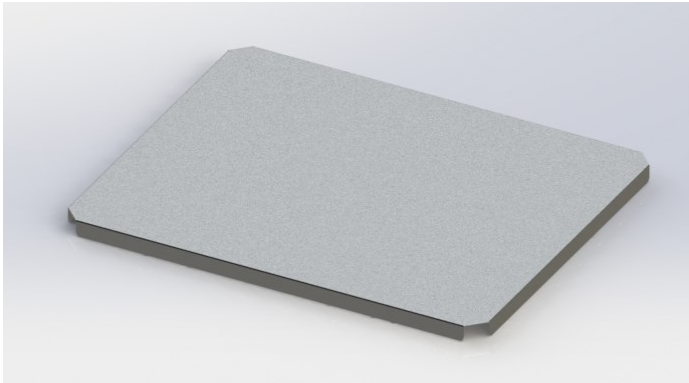
**Weight: 2.72 lbs**

***NGK Grab Wrap Holder***

**SW010111**



**PRODUCT DETAILS**



**Function**

- **Night Cover**

**SW010111**

**Dimensions: H: 1", W: 26 1/4", D: 21"**

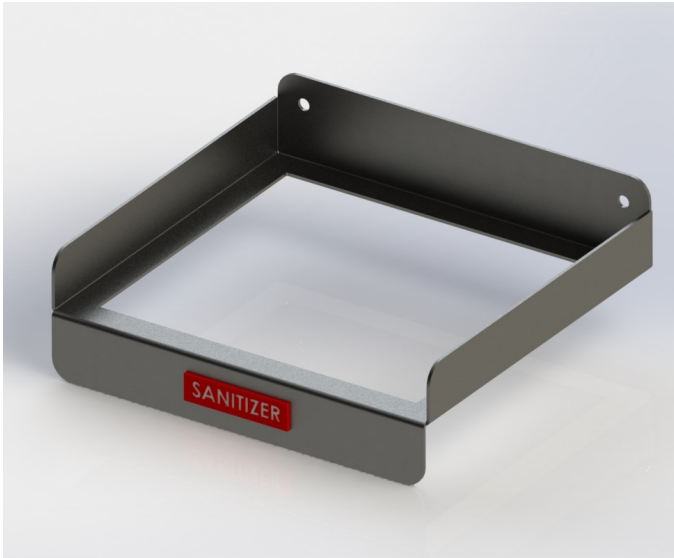
**Weight: 8.69 lbs**

***NGK Night Cover***

**SW010139**



**PRODUCT DETAILS**



**Function**

- **Sanitizer Bracket**

**Features**

- **Simple mounting design allows for sanitizer to be ready for use but out of the way.**

**SW010139**

**Dimensions: H: 7", W: 7 1/4", D: 6 5/8"**

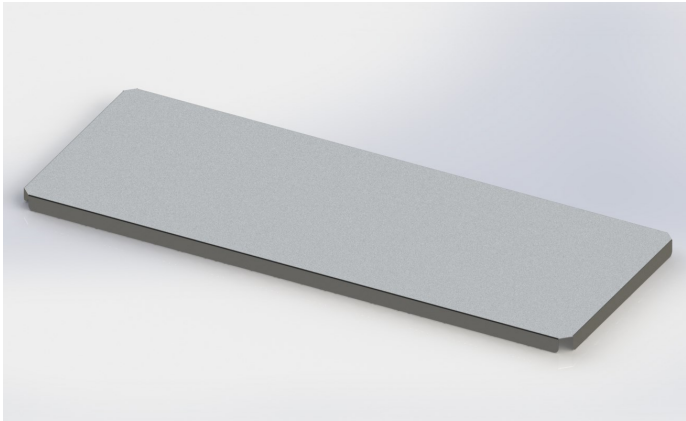
**Weight: .78 lbs**

***NGK Sanitizer Bracket***

**SW010115**



**PRODUCT DETAILS**



**Function**

- **Night Cover For Meat Well**

**SW010115**

**Dimensions: H: 1", W: 13 1/4", D: 35 1/8"**

**Weight: 15.27 lbs**

7000015



## PRODUCT DETAILS



7000015

### Operating Voltage

- 120 volts, .1 amps

### Function

- Refrigeration Temperature Control

### Features

- Digital display
- Dual temperature probes

**MR4PMUHV-12 Johnson Controls  
Temperature Control**

**7000041**



**PRODUCT DETAILS**



**Operating Voltage**

- **115 Volts, 2.2 amps**

**Function**

- **Reach In Unit Cooler**

**Features**

- **3000 BTU**

**7000041**

**Russel SLA37-30**

7000032



## PRODUCT DETAILS



### Operating Voltage

- 115 Volts, 6 amps

### Function

- 1/3rd HP Condensing Unit

7000032

**Copeland M4CH-A036-IAA-260**

**Condensing Unit**