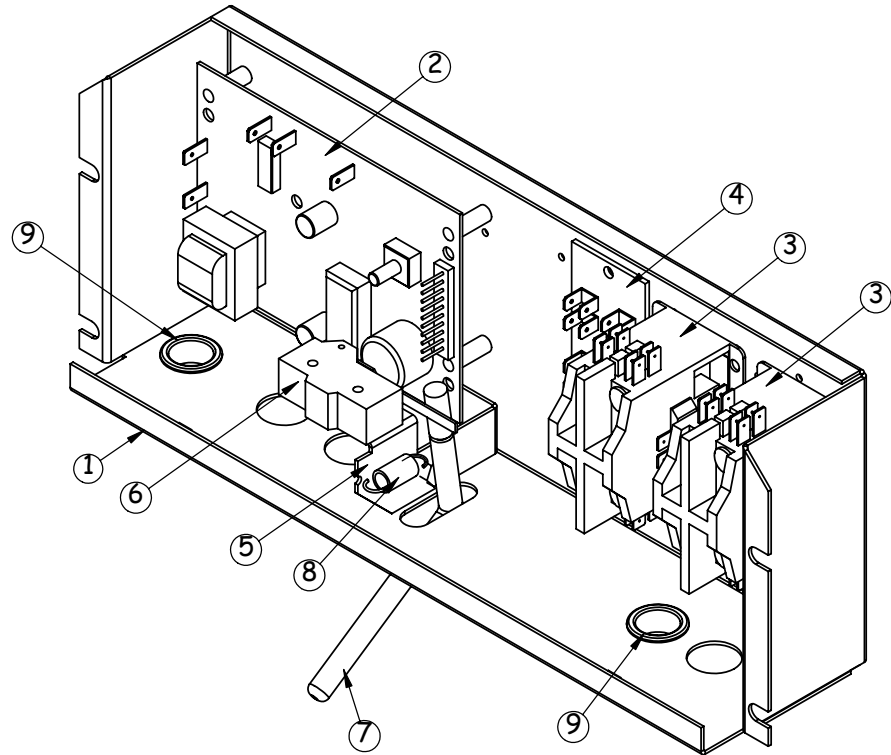


ITEM NO.	QTY.	PART NO.	DESCRIPTION
1	1	109307	WIRE BOX
2	1	70681	CONTROL BOARD
3	2	69996	CONTACTOR
4	1	61073	TERMINAL BOARD
5	1	109306	BRACKET, SWITCH
6	1	70008	MICRO SWITCH
7	1	105568	LEVER, SWITCH ARM
8	1	7585	SPRING
9	3	61132	BUSHING, .875 HEYCO
10	1	70023	SWITCH, AUTO/CLEANOUT
11	4	60341	SCREW, #8 X 1-1/4 SMS
12	8	60308	SCREW, #8 X 1/2 SMS
13	1	60109	NUT, 1/4-20 ZINC LOCK
14	2	60101	SCREW, 6-32 X 1-1/4 MACH
15	4	60285	WASHER, #8 STAR
16	2	60007	NUT, 6-32 ZINC

"C"



NOTES:

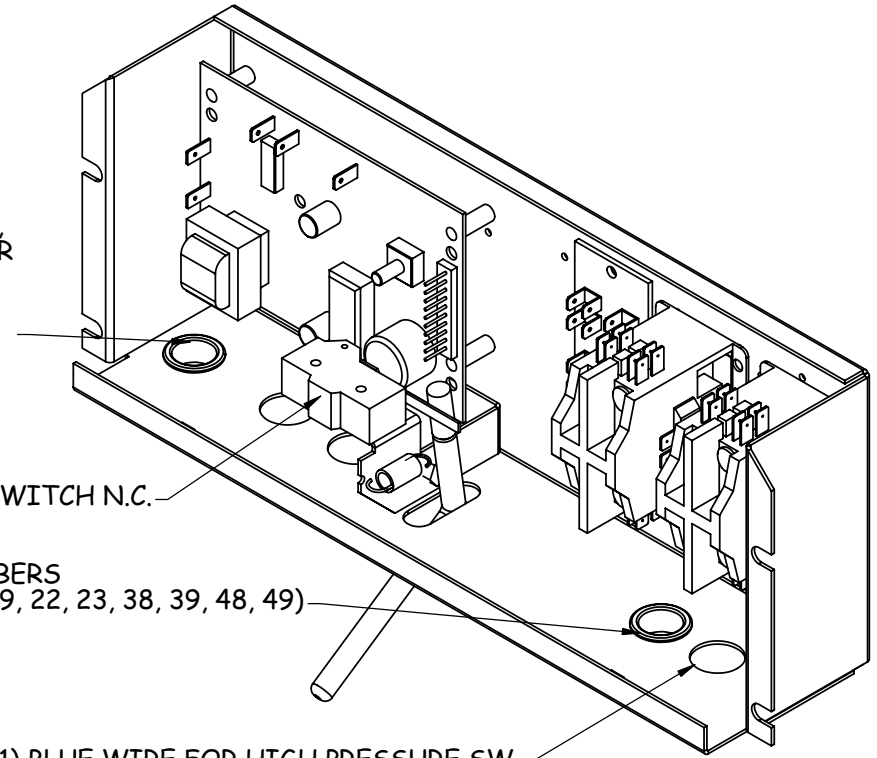
- 1) WIRES AND HARDWARE NOT SHOWN ON THIS DRAWING
- 2) USE WIRE DIAGRAM NUMBER 81355
- 3) USE WIRE CUT LIST NUMBER 14717
- 4) SEE SHEET (2) FOR ASSEMBLY AND WIRING INSTRUCTIONS

REV.	REVISION CHANGE	ECN	ENG	DR	DATE	THESE DRAWINGS AND SPECIFICATIONS ARE THE PROPERTY OF SANISERV AND SHALL NOT BE REPRODUCED OR USED AS THE BASIS FOR MANUFACTURE OR SALES OF APPARATUS WITHOUT PERMISSION.					
A	NEW RELEASE	0772	BD	ES	9/23/99	<i>SW98 PLUS</i>	CAD FILE NUMBER		<h1>SaniServ</h1>	451 E. COUNTY LINE RD.	
B	REARRANGE NUMBERS	0935	BD	BD	6/22/00		15816D			MOORESVILLE, IN. 46158	
C	ITEM (13) WAS P/N 60002	1302	BR	ES	6/3/02	UNLESS OTHERWISE SPECIFIED TOLERANCES DECIMAL FRACTIONAL .XX ±0.015 .XX ±1/64" .XX ±0.010 ANGULAR .XXX ±0.005 ±1° REMOVE ALL BURRS AND BREAK ALL SHARP EDGES DO NOT SCALE DRAWING					
D	ITEM (2) WAS P/N 70513		BR	JAG	11/15/13						
						TITLE: ASSEMBLY, WIRE BOX		MODEL: 404 208-230V, 60Hz, 1PH		USED ON: ,	
						DRAWN: ES		CHKD. ,		DATE: 9/23/99	
						SCALE: NONE		1 SHEET OF 2		P/N 15816	
						REV. D					

NOTES:

- 1) INSTALL CONTROL BOARD WITH (4) SCREWS (60341)
- 2) SECURE CONTACTORS AND TERMINAL BOARD WITH (6) SCREWS (60308)
- 3) INSERT (2) BUSHINGS AS SHOWN IN BOTTOM OF THE BOX
- 4) SECURE ARM TO BRACKET AS SHOWN, PUT (1) WASHER (60215) ON EACH SIDE OF THE BRACKET THEN SECURE WITH (2) NUTS (60109)
- 5) WIRE SPIGOT SWITCH IN NORMALLY CLOSED POSITION
- 6) ATTACH SWITCH TO BRACKET WITH (2) SCREWS (60101), (4) WASHERS (60285), AND (2) NUTS (60007)
- 7) USE (2) SCREWS (60308) TO SECURE SWITCH BRACKET TO THE BACK WALL OF THE BOX
- 8) PLACE SPRING INTO NOTCH ON SWITCH BRACKET AND THEN AROUND NOTCH IN ARM
- 9) WIRE COMPLETE BOX PER WIRE DIAGRAM
- 10) NEATLY WRAP AND TIE WIRES TO BOX FOR TRANSPORT AND STORAGE

WIRE NUMBERS
 (5,21) AND (2) FOR SPIGOT SWITCH,
 (2) FOR MIXOUT LIGHT, AND (2) FOR
 LIQUID LEVEL CONTROL BOARD
 AND (1) BLUE WIRE FOR
 HIGH PRESSURE SWITCH



NOTES:

- 1) WIRES AND HARDWARE NOT SHOWN ON THIS DRAWING
- 2) USE WIRE DIAGRAM NUMBER 81355
- 3) USE WIRE CUT LIST NUMBER 14717
- 4) SEE SHEET (1) FOR BOM AND PART NUMBERS

REV.	REVISION CHANGE	ECN	ENG	DR	DATE
A	NEW RELEASE	0772	BD	ES	9/23/99

THESE DRAWINGS AND SPECIFICATIONS ARE THE PROPERTY OF SANISERV AND SHALL NOT BE REPRODUCED OR USED AS THE BASIS FOR MANUFACTURE OR SALES OF APPARATUS WITHOUT PERMISSION.

<i>SW98 PLUS</i>	CAD FILE NUMBER 15816D	<h1>SaniServ</h1>	451 E. COUNTY LINE RD. MOORESVILLE, IN. 46158
TITLE: ASSEMBLY, WIRE BOX			
MODEL: 404 208-230V, 60Hz, 1PH	USED ON: ,		
DRAWN: ES	CHKD.:	DATE: 9/23/99	
SCALE: NONE	2 SHEET OF 2	P/N 15816	REV. D

UNLESS OTHERWISE SPECIFIED TOLERANCES

DECIMAL	FRACTIONAL
X.X ±0.015	X.X ±1/64"
X.XX ±0.010	ANGULAR
X.XXX ±0.005	±1°

REMOVE ALL BURRS AND BREAK ALL SHARP EDGES
DO NOT SCALE DRAWING