

STAR MANUFACTURING INTERNATIONAL, INC.

9325 OLIVE BLVD., P.O. Box 8492
 ST. LOUIS, MO 63132
 STAR-MASTER SERIES ELECTRIC GRIDDLES MODELS 351 AND 352

GENERAL INSTALLATION DATA

THE STARMASTER SERIES ELECTRIC GRIDDLE IS EQUIPPED FOR THE VOLTAGE INDICATED ON THE NAMEPLATE MOUNTED ON THE REAR OF THE UNIT. THE GRIDDLE IS DESIGNED FOR USE ON ALTERNATING CURRENT (AC) ONLY.

DO NOT CONNECT TO DIRECT CURRENT (DC)!

INSTALLATION:

THE INSTALLATION OF THE ELECTRIC GRIDDLE MUST CONFORM TO THE NATIONAL ELECTRIC CODE AND ALL LOCAL ELECTRIC CODES AND ORDINANCES AND THE LOCAL ELECTRIC COMPANY RULES AND REGULATIONS

FOR YOUR PROTECTION WE RECOMMEND THAT A QUALIFIED ELECTRICIAN INSTALL THIS GRIDDLE. HE SHOULD BE FAMILIAR WITH ELECTRICAL INSTALLATIONS AND ALL ELECTRICAL EFFICIENT PERFORMANCE. THE EXTERNAL WIRING SHOULD BE IN CONDUIT OR AN APPROVED TYPE OF FLEXIBLE CABLE SUITABLE FOR OPERATION AT THE TEMPERATURE INDICATED AT THE CONDUIT HOLE, AND OF A PROPER SIZE TO CARRY THE LOAD. THE SUPPLY CIRCUIT SHOULD BE PROPERLY FUSED AND EQUIPPED WITH A MEANS OF DISCONNECTING, AS REQUIRED BY LOCAL ELECTRICAL CODE. THE BODY OF THE GRIDDLE SHOULD BE GROUNDED. (DO NOT GROUND TO A GAS SUPPLY LINE.)

ELECTRICAL DATA:

Electrical Data	3 PHASE LOADING KW PER PHASE			NOMINAL AMPS. PER LINE WIRE							
				208V - 3PH			240V - 3PH			208V - 1PH	
	XY	YZ	XZ	X	Y	Z	X	Y	Z		
Model 352 - 8 KW	-	4.0	4.0	19.2	19.2	33.3	16.7	16.7	28.9	38.5	33.3
Model 351 - 4 KW	-	-	-	-	-	-	-	-	-	19.2	16.7

THE MODEL 351 AND 352 STARMASTER SERIES ELECTRIC GRIDDLES ARE WIRED AT THE FACTOR FOR OPERATING ON SINGLE PHASE. TO CONNECT FOR THREE PHASE OPERATION, SEE WIRING DIAGRAM ATTACHED.

CONNECTING POWER SUPPLY:

REMOVE BACK PANEL OF GRIDDLE BY REMOVING SCREWS. A CONDUIT BOX IS LOCATED AT THE CENTER OF THE OPENING WITH A 7/8" DIAMETER KNOCK-OUT HOLE AT THE BOTTOM FOR ATTACHING THE CONDUIT WITH THE PROPER CLAMP. ALL WIRES MUST BE SPLICED OR JOINED AS TO BE ELECTRICALLY OR MECHANICALLY SECURE AND BE COVERED WITH AN INSULATION EQUAL TO THAT OF THE WIRE. LOOSE CONNECTIONS OR ONES IMPROPERLY MADE CAN RESULT IN ARCING WHICH IN TURN CAN EASILY CAUSE A FIRE.

LEVELING UNIT:

LEVEL UNIT BY ADJUSTING THE FOUR (4) FEET WHICH HAVE AN ADJUSTMENT OF ONE INCH FOR ACCURATE AND PERFECT LINE-UP WITH OTHER STARMASTER SERIES UNITS.

OPERATING INSTRUCTIONS

BEFORE OPERATING THE GRIDDLE, IT SHOULD BE CHECKED TO SEE THAT IT IS SETTING LEVEL. ADJUST THE FEET IF NECESSARY TO LEVEL THE GRIDDLE.

TO SEASON THE GRIDDLE HEATING SURFACE:

CLEAN THE GRIDDLE SURFACE THOROUGHLY. AFTER THE GRIDDLE HAS BEEN THOROUGHLY CLEANED, IT SHOULD BE SEASONED TO PREVENT FOOD FROM STICKING. BEFORE USING AND AFTER EACH THOROUGH SCOURING, SEASON THE GRIDDLE HEATING SURFACE IN THE FOLLOWING MANNER:

1. TURN THE TEMPERATURE CONTROL DIALS TO 350 DEGREE.
2. USING A CLEAN CLOTH, NOT A SPATULA, SPREAD A THIN FILM OF COOKING OIL OR FAT OVER THE GRIDDLE COOKING SURFACE. THIS FILM SHOULD REMAIN ON THE HOT GRIDDLE SURFACE FOR HALF AN HOUR.
3. REMOVE THE EXCESS FAT AND WIPE CLEAN.
4. APPLY ANOTHER FILM OF COOKING OIL OVER THE HOT COOKING AREA FOR ANOTHER HALF HOUR AND AGAIN REMOVE THE EXCESS FAT AND WIPE CLEAN. THE GRIDDLE SURFACE SHOULD NOW BE READY FOR USE.

EVEN WITH CAREFUL SEASONING, FOOD MAY, TO SOME EXTENT, STICK TO THE GRIDDLE COOKING SURFACE UNTIL GRIDDLE PLATE IS "BROKEN IN."

STAR-MASTER SERIES ELECTRIC GRIDDLES MODELS 351 & 352

TEMPERATURE CONTROL:

THE TEMPERATURE CONTROLS ARE COMBINATION "ON-OFF" SWITCHES AND THERMOSTATS. TURNING THE DIAL KNOB AUTOMATICALLY MAINTAINS SELECTED HEAT RANGE.

THE MODEL 352, 36" GRIDDLE HAS TWO (2) THERMOSTATS WHICH OPERATE INDEPENDENTLY OF ONE ANOTHER. THE TEMPERATURE OF EACH HALF OF THE GRIDDLE CAN BE INDEPENDENTLY CONTROLLED. EACH THERMOSTAT CONTROLS THE SECTION OF THE GRIDDLE ABOVE IT AND MAY BE SET AT DIFFERENT TEMPERATURES, IF DESIRED.

THE MODEL 351, 18" GRIDDLE HAS ONE THERMOSTAT AND CONTROLS THE ENTIRE GRIDDLE AREA.

COOKING:

SET THE THERMOSTAT DIAL KNOB AT THE TEMPERATURE DESIRED. AFTER A SHORT PRE-HEATING PERIOD, THE THERMOSTAT WILL AUTOMATICALLY MAINTAIN THE SELECTED TEMPERATURE.

IDLING:

DURING IDLE PERIODS, TO SAVE ON OPERATING COSTS, LOWER THE TEMPERATURE SETTING OF THE THERMOSTATS TO ABOUT 250 DEGREE. IT IS NOT NECESSARY TO MAINTAIN COOKING TEMPERATURE DURING IDLE PERIODS, AS THE GRIDDLE CAN QUICKLY BE REHEATED TO DESIRED TEMPERATURE.

SIGNAL LIGHTS:

EACH THERMOSTAT HAS ITS OWN SIGNAL LIGHT WHICH INDICATES WHEN THE THERMOSTAT IS PROVIDING HEAT. WHEN THE TEMPERATURE IS REACHED, THE LIGHT GOES OFF.

GRIDDLE CARE:

IT TAKES VERY LITTLE TIME AND EFFORT TO KEEP THE GRIDDLE ATTRACTIVE AND PERFORMING AT TOP EFFICIENCY. IF GREASE IS PERMITTED TO ACCUMULATE, IT WILL FORM A GUMMY CAKE AND THEN CARBONIZE INTO A HARD SUBSTANCE WHICH IS EXTREMELY DIFFICULT TO REMOVE. TO PREVENT THIS CONDITION, THE FOLLOWING SUGGESTIONS FOR PROPER CLEANLINESS SHOULD BE FOLLOWED:

1. AFTER EACH USE, SCRAPE THE GRIDDLE WITH A SCRAPER OR A FLEXIBLE SPATULA TO REMOVE EXCESS FAT AND FOOD. A WASTE DRAWER IS PROVIDED FOR THE SCRAPINGS. IF THERE IS AN ACCUMULATION OF BURNED ON FAT AND FOOD, THE GRIDDLE SHOULD BE THOROUGHLY SCOURED AND RESEASONED AS OUTLINED ABOVE. USE PUMICE OR GRIDDLE STONE WHILE THE GRIDDLE IS WARM. DO NOT USE STEEL WOOL BECAUSE OF THE DANGER OF STEEL SLIVERS GETTING INTO THE FOOD.
2. DAILY, USE A CLEAN CLOTH AND A GOOD NON-ABRASIVE CLEANER TO CLEAN THE STAINLESS STEEL BODY OF THE GRIDDLE. WIPE THE POLISHED FRONT WITH A SOFT CLOTH.
3. AT LEAST ONCE A DAY, REMOVE THE WASTE DRAWER AND WASH IN THE SAME WAY AS AN ORDINARY COOKING UTENSIL. IF THE GREASE DRAWER IS PERMITTED TO FILL TOO HIGH, THE EXCESS GREASE WILL RUN OUT OF THE OVERFLOW HOLE AT THE FRONT OF THE DRAWER. THE DRAWER IS REMOVED BY PULLING FORWARD UNTIL IT IS RELEASED FROM ITS TRACK.

TROUBLE SHOOTING CHART

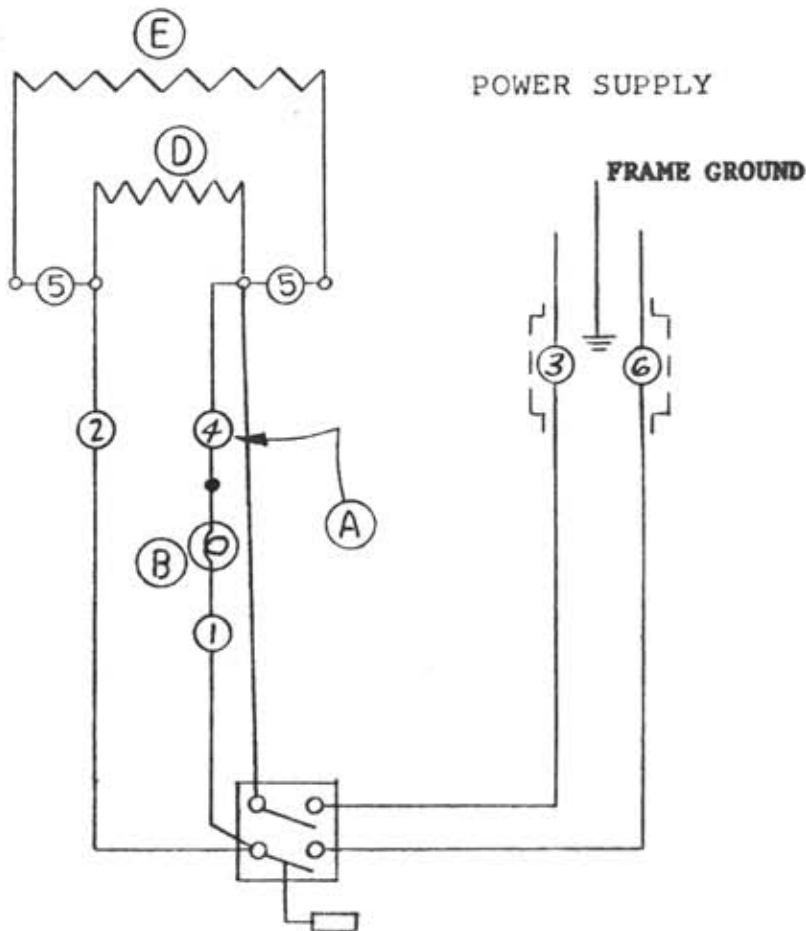
<u>TROUBLE</u>	<u>CAUSE</u>	<u>REMEDY</u>
Griddle will not heat	(a) Fuse or breaker blown. (b) Power line disconnected. (c) Plug disconnected.	Replace fuse or reset breaker. Reset disconnect switch. Connect.
One section will not heat.	(a) Thermostat not turned on. (b) Bad thermostat. (c) Bad heating element.	Adjust to temperature. Call Service Station. Call Service Station.
Outside edges cold.	(a) Perimeter element bad.	Call Service Station.
Center cold.	(a) Center element bad.	Call Service Station.
Griddle surface too hot.	(a) Frying unevenly on griddle.	Space out food uniformly on griddle surface.
Food sticking.	(a) Grease or food particles accumulating on surface. (b) Not seasoned.	See section on griddle care. See section on griddle care.
Food runs to one side.	(a) Not level.	See leveling instructions.

THERMOSTAT RECALIBRATION:

1. PULL KNOB FORWARD AND REMOVE FROM SHAFT.
2. TURN SCREW IN CENTER OF SHAFT CLOCKWISE TO DECREASE TEMPERATURE OR COUNTERCLOCKWISE TO INCREASE TEMPERATURE. NOTE: 1/4 TURN OF THIS SCREW WILL RESULT IN A CHANGE OF APPROXIMATELY 30 DEGREE F.
3. REPLACE KNOB.

MODEL 351

WIRING DIAGRAM



- (A) CODE LETTERS
- (B) SIGNAL LIGHT
- (C) THERMOSTAT
- (D) HEATING ELEMENT - 2250 WATT
- (E) PERIMETER ELEMENT - 1750 WATT
- (F) OUTLET BOX

NOTE: ON THREE PHASE SUPPLY
USE ONE PHASE ONLY.

REVISIONS

A
B
C
D

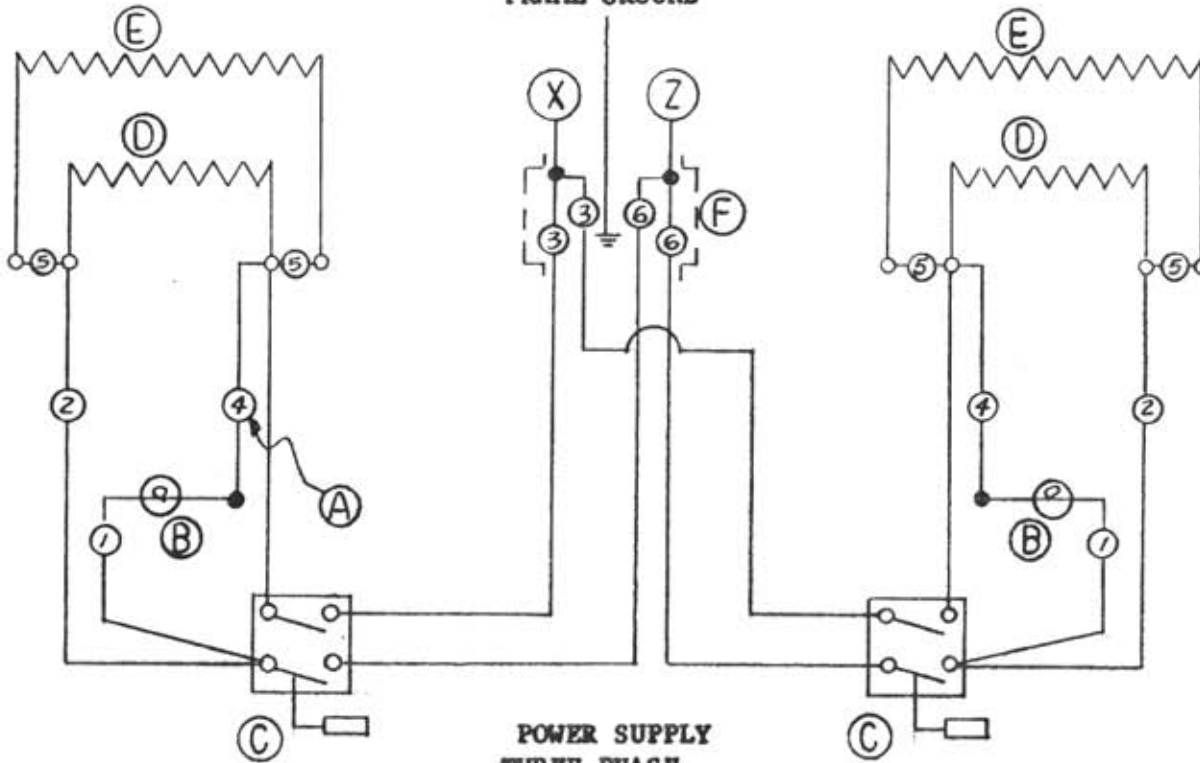
NOTE: ALL INTERNAL WIRING IS #14 GA.

RATED WATTAGE	NOMINAL AMPS PER LINE WIRE	
	208V 1 PHASE	240V 1 PHASE
4,000	19.2	16.66
FOR POWER SUPPLY CONNECTIONS USE COPPER WIRE ONLY SUITABLE FOR AT LEAST 75°C(167°F) USE WIRE GA. SHOWN OR LARGER	#10 AWG	#10 AWG

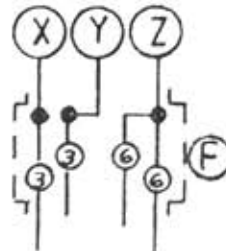
MODEL 352

WIRING DIAGRAM

POWER SUPPLY SINGLE PHASE
FRAME GROUND



POWER SUPPLY
THREE PHASE



REVISIONS

- A
- B
- C
- D

- (A) CODE LETTERS
- (B) SIGNAL LIGHT
- (C) THERMOSTAT
- (D) HEATING ELEMENT - 2250 WATT
- (E) PERIMETER ELEMENT - 1750 WATT
- (F) OUTLET BOX

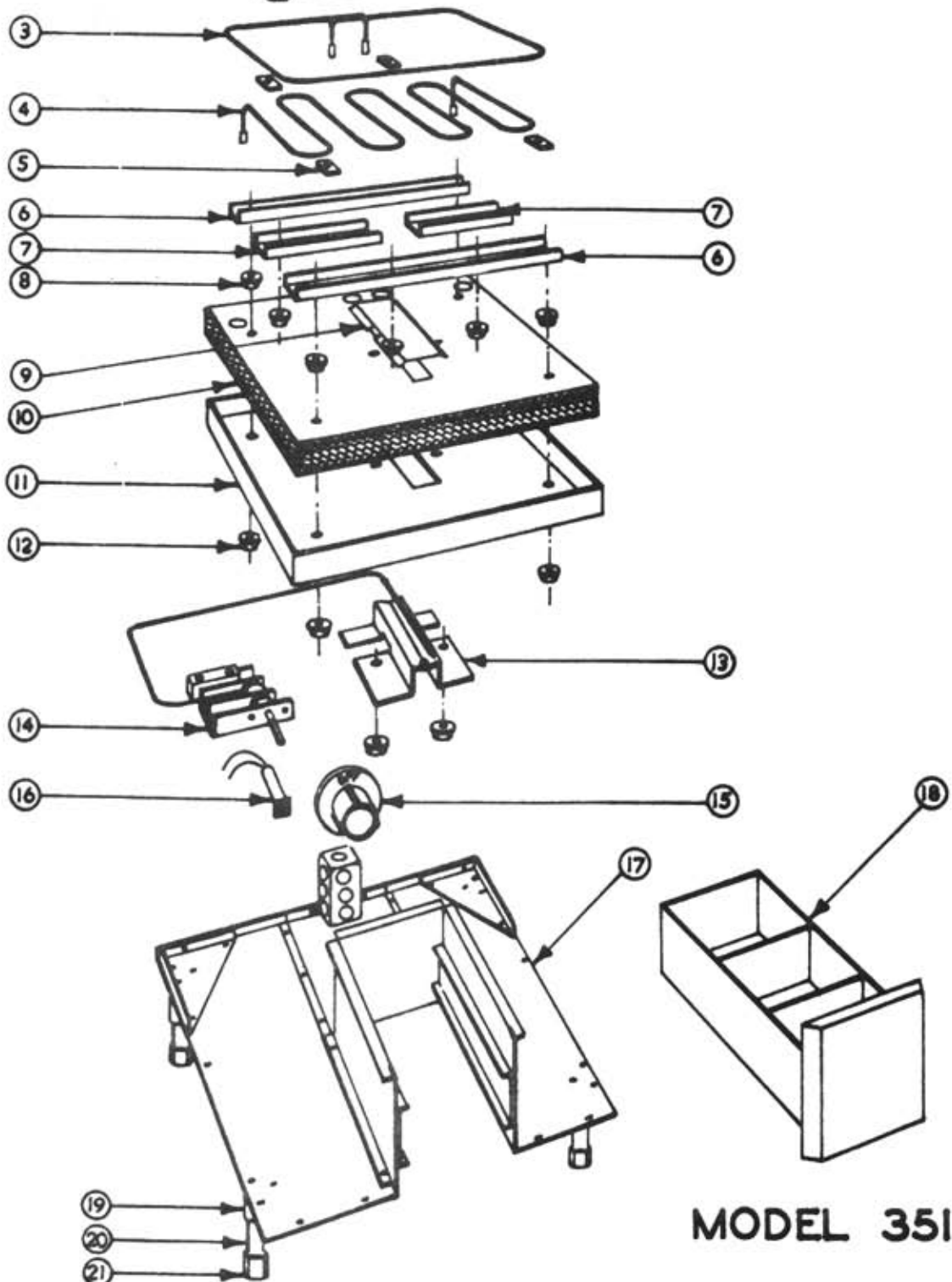
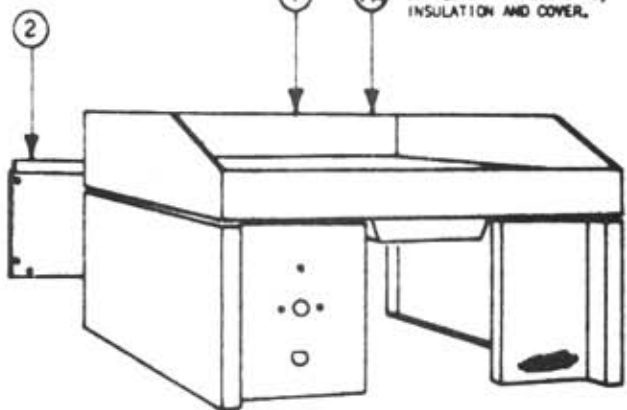
NOTE: ALL INTERNAL WIRING IS #14 GA.

NOTE: USE COPPER WIRE ONLY FOR POWER SUPPLY CONNECTIONS.

RATED WATTAGE	3 PHASE LOADING			NOMINAL AMPERES PER LINE							
	KW PER PHASE			208V - 3 PHASE			240V - 3 PHASE			208V	240V
	X - Y	Y - Z	X - Z	X	Y	Z	X	Y	Z	1 PH.	1 PH.
8,000	---	4.0	4.0	19.2	19.2	33.3	16.66	16.66	28.86	38.5	33.3
FOR POWER SUPPLY CONNECTIONS USE COPPER WIRE ONLY SUITABLE FOR AT LEAST 75°C (167°F) WIRE WIRE GA. SHOWN OR LARGER				AWG #10	AWG #10	AWG #8	AWG #10	AWG #10	AWG #8	AWG #6	AWG #8

GRIDDLE TOP ONLY

GRIDDLE PLATE ASSEMBLY
COMPLETE WITH ELEMENTS,
INSULATION AND COVER.



MODEL 351

PARTS LIST

EFFECTIVE— OCTOBER 1982MODEL 351
STAR MASTER 18" GRIDDLE

KEY NUMBER	PART NUMBER	NUMBER PER UNIT	DESCRIPTION
1	G2-351008	1	GRIDDLE TOP ASSEMBLY COMPLETE
1a	G2-351003	1	GRIDDLE PLATE ASSEMBLY
2	G2-9456	1	BACK
3	2N-9320	1	ELEMENT, PERIMETER 240V
3	2N-9321	1	ELEMENT, PERIMETER 208V
4	2N-9318	1	ELEMENT, CENTER 240V
4	2N-9319	1	ELEMENT, CENTER 208V
5	G2-9329	4	STARP, ELEMENT
6	G2-9445	2	CLAMP, ELEMENT LONG
7	G2-9446	2	CLAMP, ELEMENT SHORT
8	2C-6517	16	NUT, LOCK
9	G2-9333	1	ANTICIPATOR
11	G2-9447	1	COVER, ELEMENT
12	2C-6516	6	NUT, WASHER BASE
13	G2-351017	1	CLAMP, THERMOSTAT BULB
14	2T-Y2313	1	THERMOSTAT
15	2R-9340	1	KNOB, CONTROL
16	G2-156111	1	PILOT LIGHT
18	G2-351006	1	DRAWER
18a	G2-9460	1	DRAWER FRONT
19	Z1-115006	4	LEG ASSEMBLY (LESS FOOT)
20	2A-9347	4	EXTENSION FOOT
21	2A-7612	4	FOOT
	2C-9348	4	STUD

*SUGGESTED PARTS STOCKING—

IMPORTANT: WHEN ORDERING SPECIFY VOLTAGE OR TYPE GAS DESIRED
INCLUDE MODEL AND SERIAL NUMBER—(1) MINIMUM PARTS ORDER—\$5.00PAGE 1
OF 1**STAR MANUFACTURING COMPANY**

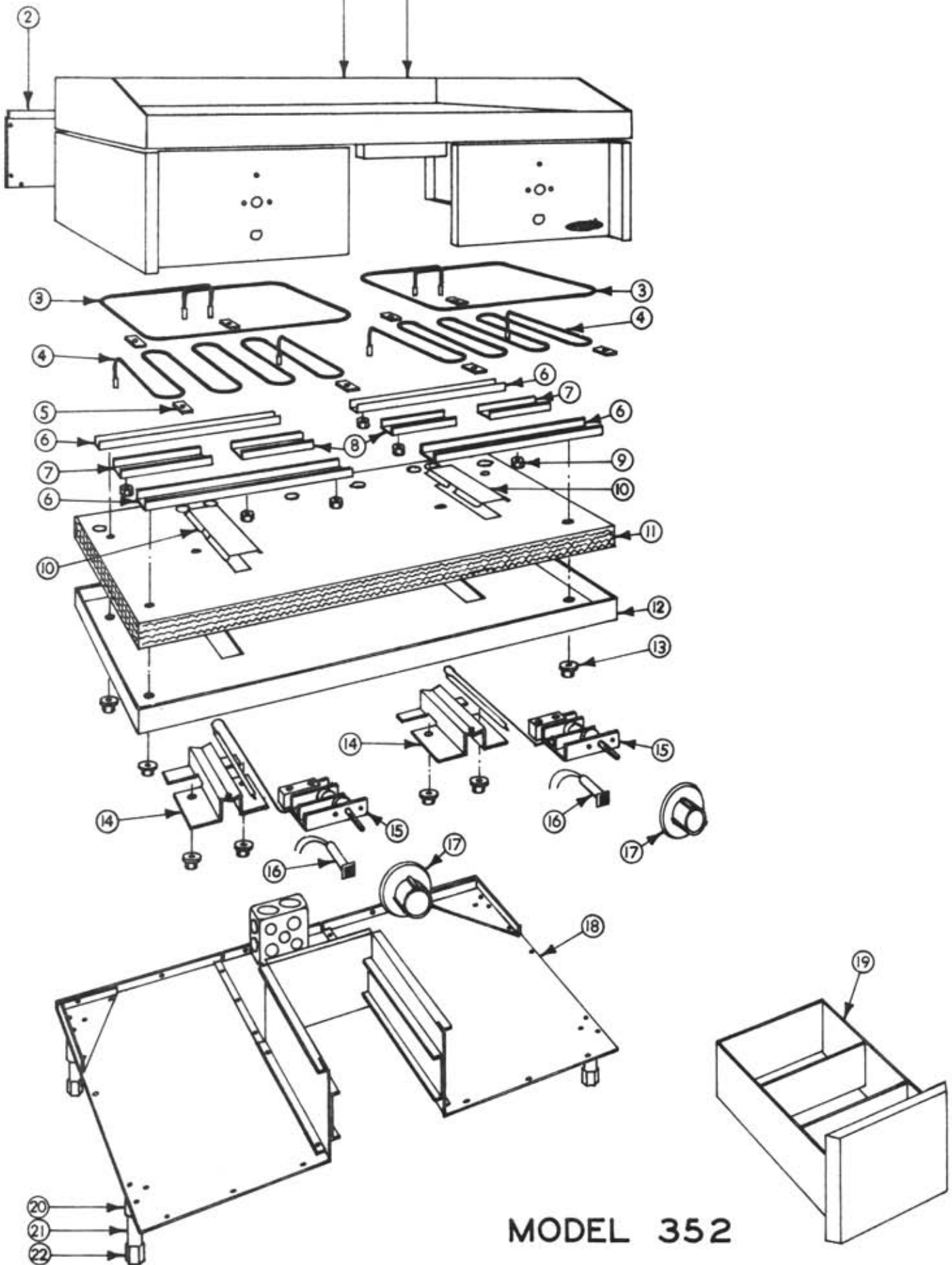
9325 OLIVE BLVD. • P.O. BOX 8492 • ST. LOUIS, MO. 63132

PHONE: (314) 994-0880



GRIDDLE TOP ONLY

GRIDDLE PLATE ASSEMBLY
COMPLETE WITH ELEMENTS,
INSULATION AND COVER.



MODEL 352

PARTS LIST

MAY 1992

EFFECTIVE—

8G

352

MODEL _____
STARMASTER 36" ELECTRIC GRIDDLE

KEY NUMBER	PART NUMBER	NUMBER PER UNIT	DESCRIPTION
1	G2-352009	1	GRIDDLE TOP ASSEMBLY COMPLETE
1a	G2-352004	1	GRIDDLE TOP ASSEMBLY
2	G2-9325	1	BACK
3	2N-9320	2	ELEMENT , PERIMETER (240V)
	2N-9321	2	ELEMENT , PERIMETER (208V)
4	2N-9318	2	ELEMENT , CENTER (240V)
	2N-9319	2	ELEMENT , CENTER (208V)
5	G2-9329	8	STRAP , ELEMENT
6	G2-9330	4	CLAMP , ELEMENT (LONG)
7	G2-9331	2	CLAMP , ELEMENT (MEDIUM)
8	G2-9328	2	CLAMP , ELEMENT (SHORT)
9	2C-6517	32	NUT , LOCK
10	G2-9333	2	ANTICIPATOR
12	G2-9326	1	COVER , ELEMENT
13	2C-6516	4	NUT , WASHER - BASE
14	G2-351017	2	CLAMP , THERMOSTAT BULB
15	2T-Y2313	2	THERMOSTAT
16	G2-156111	2	PILOT LIGHT
17	2R-9340	2	KNOB , CONTROL
19	G2-352005	1	DRAWER ASSEMBLY
20	Z1-115006	4	LEG ASSEMBLY (LESS FOOT)
21	2A-9347	4	EXTENSION FOOT
	2C-9348	4	STUD (NOT SHOWN)
22	2A-7612	4	FOOT

*SUGGESTED PARTS STOCKING—

IMPORTANT: WHEN ORDERING SPECIFY VOLTAGE OR TYPE GAS DESIRED
INCLUDE MODEL AND SERIAL NUMBER—(1) MINIMUM PARTS ORDER—\$5.00PAGE 1
OF 1**Star Manufacturing International, Inc.**

9325 Olive Boulevard, P.O. Box 8492, St. Louis, MO 63132

Phone (314) 994-0880 • FAX (314) 994-0406