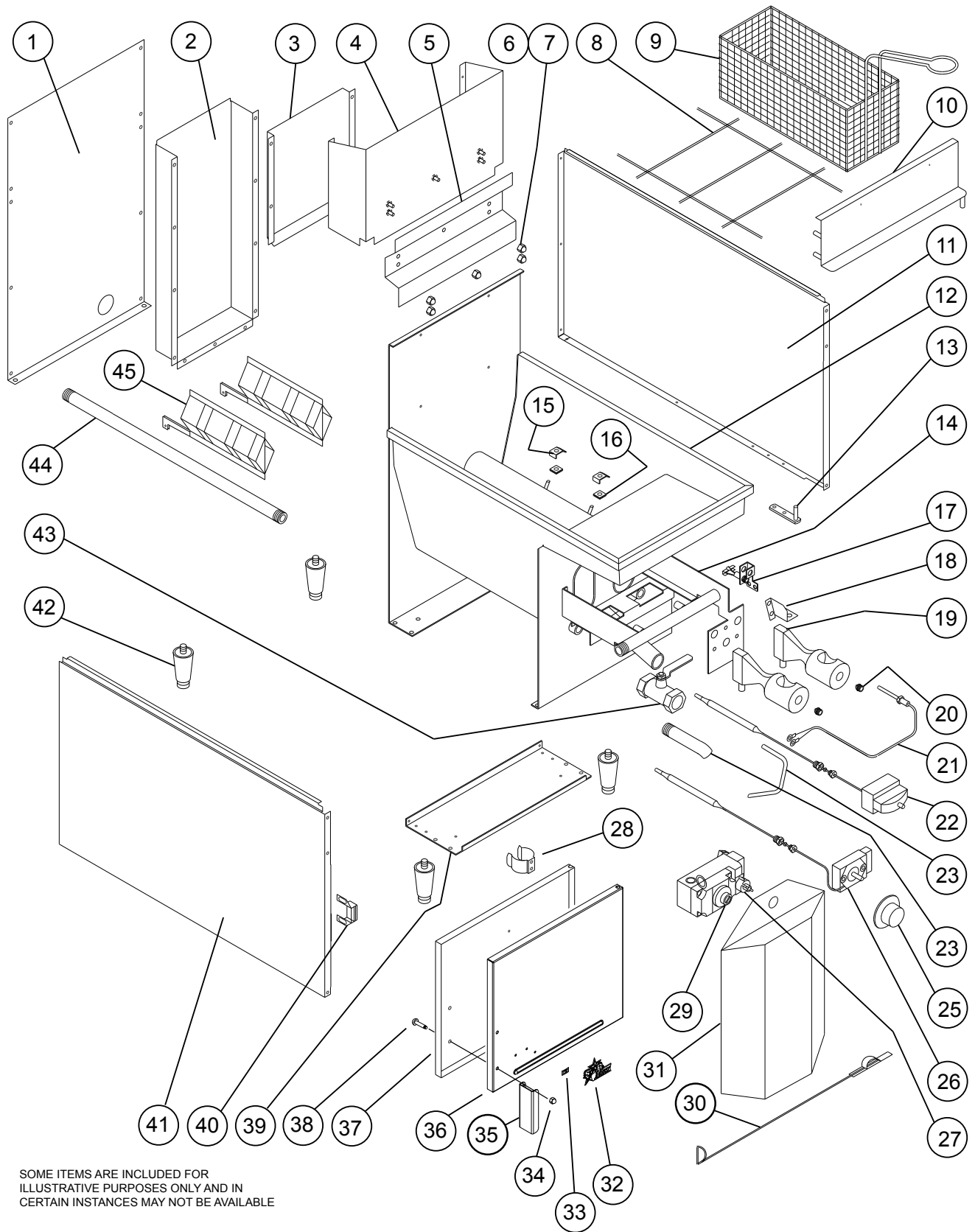


2M-Z15997: Star-Max Gas Deep Fat Fryer



SOME ITEMS ARE INCLUDED FOR ILLUSTRATIVE PURPOSES ONLY AND IN CERTAIN INSTANCES MAY NOT BE AVAILABLE

MODEL 404F
FRYER NAT/PROP

STAR MANUFACTURING INTERNATIONAL, INC.
SK2585 Rev. - 5-20-12

PARTS LIST

October 01, 2015, Rev A

Model: 404F Star-Max Counter Gas Fryer				
Fig No	Part No	Qty	Description	Application
1	E4-Z0049	1	PANEL-BACK	
2	E4-Z0048	1	FLUE-BACK	
3	E4-Z0562	1	BAFFLE-FLUE	
4	E4-404043	1	COVER FLUE ASSY	
5	E4-Z0446	1	HANGER-BASKET	
6	2C-H8670	5	WASHER #8 INT. TOOTH	
7	2C-2555	5	ACORN NUT #8-32	
8	E4-401043	1	BASKET RACK ASSY	
9	2B-404022	2	BASKET ASSY	
10	E4-404032	1	TRIM-FRONT ASSY	
11	E4-Z0086	1	PANEL RIGHT	
12	E4-404048	1	KETTLE ASSY	
13	E4-404034	1	RETAINER HINGE	
14	E4-404040	1	MANIFOLD ASSY	
15	E4-9074	4	CLAMP-THERMOSTAT BULB	
16	F2-9173	4	SPACER-THERMOSTAT-BULB	
17	2J-Z0555	1	PILOT, NAT (.016 ORIFICE)	404F NAT
	E4-Z0556		PILOT, PROP (.026 ORIFICE)	404F PROP
18	E4-Z0554	1	BRACKET-PILOT	
20	E4-404036	2	BURNER	
	2A-Y5470		ORIFICE #51	404F NAT
	2A-Z0296		ORIFICE #60	404F PROP
21	2J-Y9270	1	THERMOPILE	
22	2T-Y9266	1	SAFETY THERMOSTAT	
23	E4-Z0112	1	TUBE, PILOT	
24	E4-404033	1	DRAIN FITTING	
25	2R-Z6003	1	KNOB	
26	2T-Z6007	1	THERMOSTAT	
27	2J-Y9268	1	VALVE-7000, PROP	404F PROP
	2J-Z6452		VALVE, 71-502, NAT	404F NAT
28	2C-Z0096	1	CLIP-TUBE	
29	2J-Y9977	1	LPT PRESSURE REGULATOR (OPTIONAL FOR PROPANE)	
30	2J-7961	1	E-Z LIGHTER ROD	
31	2G-5886	1	BAG-FILTER	
32	2M-Z15804	1	STAR-MAX LOGO	
33	2C-8477	3	TINNERMAN CLIPS	
34	2C-2559	2	NUT ACORN 10-24	
35	E6-Z15964	1	HANDLE	
36	E4-Z15970	1	PANEL-DOOR	
37	E4-Z0037	1	LINER-DOOR	
38	2A-Y9925	2	SCREW - DOOR	
39	E4-404046	1	BOTTOM FRONT ASSY	
40	2C-9788	1	CATCH-MAGNETIC	
41	E4-Z0085	1	PANEL-LEFT	
42	2A-Z5942	4	LEG-4"	
43	2V-Z0312	1	VALVE-DRAIN 3/4 NPT	
44	2K-Y9975	1	PIPE 3/8 NPT 21" LONG	
45	E4-404042	2	RADIANT ASSY	
NI	2M-Z8942	1	LABEL-FRYER BURN WARNING	
NI	2M-Z8943	1	SIGN-FRYER WARNINGS	
NI	PS-401058	1	BULB CLAMP KIT	

2M-Z15997: Star-Max Gas Deep Fat Fryer