



**Star
Manufacturing
International Inc.**

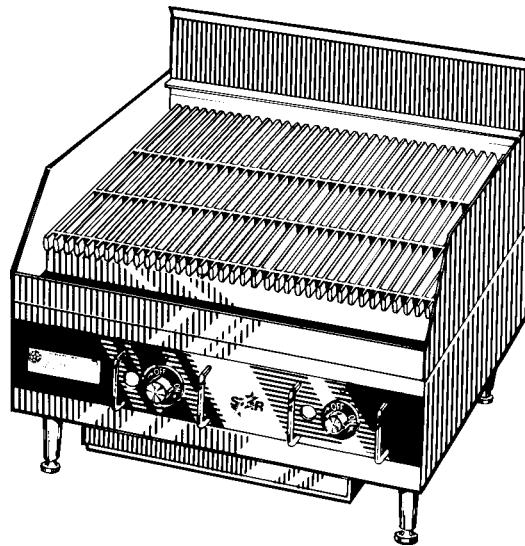
10 Sunnen Drive
St. Louis, MO 63143

Phone: (314) 781-2777
FAX: (314) 781-3636

**Installation
and
Operating
Instructions**

2M-Y7198 Rev. F 6/28/00

STAR-MAX GAS CHARBROILER MODELS 6015CB, 6024CB, 6036CB, 6115RCB, 6124RCB, and 6136RCB



Model 6024CB



GENERAL INSTALLATION DATA



CAUTION

This equipment is designed and sold for commercial use only by personnel trained and experienced in its operation and is not sold for consumer use in and around the home nor for use directly by the general public in food service locations. For equipment to be used by the general public, please contact the factory.

The Star-Max series gas charbroiler is equipped for the type of gas indicated on the nameplate mounted on the front panel. All units are shipped from the factory for use with natural gas. The unit can easily be converted for use with propane gas: see propane gas.

-IMPORTANT-

INSTALLATION: INSTALL IN NON-COMBUSTIBLE LOCATIONS ONLY! Clearance from non-combustible construction must be 6" from back and sides.

The installation of the Appliance must conform to the NATIONAL FUEL GAS CODE "ANSI Z223.1 - LATEST EDITION" AND ALL LOCAL GAS COMPANY RULES AND REGULATIONS.

IN CANADA INSTALLATION SHALL BE IN ACCORDANCE WITH THE CURRENT CAN/CGA-B149.1 NATURAL GAS INSTALLATION CODE OR CAN/CGA-B149.2 PROPANE INSTALLATION CODE AND LOCAL CODES WHERE APPLICABLE.

WARNING: Improper installation, adjustment, alteration, service or maintenance can cause property damage, injury or death. Read the installation, operating and maintenance instructions thoroughly before installing or servicing the equipment.

FOR YOUR SAFETY

DO NOT STORE OR USE GASOLINE OR OTHER FLAMMABLE VAPORS AND LIQUIDS IN THE VICINITY OF THIS OR ANY OTHER APPLIANCE. KEEP THE APPLIANCE AREA CLEAR AND FREE FROM COMBUSTIBLES.

This appliance, its pressure regulator and its individual shutoff valve must be disconnected from the gas supply piping system during any pressure testing of that system at test pressures in excess of 1/2 PSIG. This appliance and its pressure regulator must be isolated from the gas supply piping system by closing its individual manual shutoff valve during any pressure testing of the gas supply piping system at test pressures equal to or less than 1/2 PSIG. For your protection, we recommend a qualified installing agency install this appliance. They should be familiar with gas installations and your local gas requirements. In any case, your gas company should be called to approve the final installation. In addition, there should be posted, in a prominent location, detailed instructions to be followed in the event the operator smells gas. Obtain the instructions from the local gas supplier.

LEVELING UNIT

This charbroiler is supplied with 4 feet which must be screwed into the body. Level unit by adjusting the (4) feet which have an adjustment of 1-3/4" for accurate and perfect line-up with other units. **CAUTION: DO NOT INSTALL WITHOUT ATTACHING FEET - DO NOT REMOVE FEET.**

GAS INPUT TO CHARBROILER:

Models 6015CB and 6115RCB 25,000 BTU/HR
Models 6024CB and 6124RCB 50,000 BTU/HR
25,000 BTU/HR/BURNER
Models 6036CB and 6136RCB 75,000 BTU/HR
25,000 BTU/HR/BURNER

GAS PIPING

Gas piping shall be of such size and so installed as to provide a supply of gas sufficient to meet the full gas input of the appliance. If the appliance is to be connected to existing piping, it shall be checked to determine if it has adequate capacity. Joint compound (pipe dope) shall be used sparingly and only on the male threads of the pipe joints. Such compounds shall be resistant to the action of L.P. gases. **WARNING:** Any loose dirt or metal particles which are allowed to enter the gas lines on this appliance will damage the valve and affect its operation. When installing this appliance, all pipe and fittings must be free from all internal loose dirt.

GAS PRESSURE REGULATOR

A convertible pressure regulator is provided with each charbroiler. It should be connected to the inlet pipe at the rear of the unit. The gas supply is then connected to it. It is shipped set for 6" water column manifold pressure for use with natural gas. Allow 6" clearance from back of unit to wall for servicing and installation.

CONNECTING GAS SUPPLY LINE

The gas inlet of the charbroiler is sealed at the factory to prevent entry of dirt. Do not remove this seal until the actual connection is made to the gas supply line.

MANUAL SHUT OFF VALVE

A manual shut off valve should be installed upstream from the manifold and within six feet of the charbroiler.

PROPANE GAS

This charbroiler is equipped with fixed orifice hoods and is shipped from the factory for use with natural gas. To convert to propane gas, install the burner orifice hoods supplied behind the front panel as follows:

1. Remove grill, radiants and burners.
2. Remove the burner orifice hoods and install the orifice hoods supplied.
3. Replace the burners, radiants, and grill.
4. Set manifold pressure to (10) inch water column. A 1/8" pipe plug on the burner manifold can be removed for attaching a pressure gauge.

Remove the slotted, or hex-threaded plug from the pressure regulator. Invert the plug and re-install. The letters "LP" should now be visible on the plug. The regulator is now set for 10" (25.4 cm) water column.

CHECKING FOR GAS LEAKS

Soap and water solution or other material acceptable for the purpose, shall be used in locating gas leakage. Matches, candle flame or other sources of ignition shall not be used for this purpose. Check entire piping system for leaks.

PILOT LIGHTING INSTRUCTIONS

The charbroiler is equipped with standing pilots, and should be lit immediately after the gas is turned on.

1. Turn off main valve to unit and wait 5 minutes to clear gas.
2. Turn off all knobs and pilot valves.
3. Turn on main valve and light all pilots.
4. Turn burner knobs to desired setting.
5. To turn burners off, turn knobs off.

SHUTTING DOWN INSTRUCTIONS

1. Turn the burner valve knobs to the off position to turn burners off.

PILOT LIGHT REGULATION

The pilot lights on this broiler have been turned off at the factory. Adjust pilot light flames as small as possible, but high enough to light burner immediately when burner valve is turned on high.

BURNER OPERATION

To ignite burners, turn burner valve knob to "HI" position. Each burner is controlled by an individual high-low, on-off valve. An infinite number of broiling temperatures may be obtained by turning the burner valve knob to any position between high and low.

BURNER ADJUSTMENT

1. Turn burner valve knob to "HI" position.
2. Slowly decrease openings of air shutters to give a soft blue flame having luminous tips, then slowly increase openings to a point where the yellow tips disappear and a hard blue flame is obtained.

EXHAUST CANOPY

Open hearth broilers inherently create a good deal of heat and smoke and should be installed under an efficient exhaust hood with flame proof filters. A vertical distance of not less than 48" shall be provided between the top of the appliance and filters or any other combustible material.

AIR SUPPLY

Provisions for adequate air supply must be provided.

OPERATING INSTRUCTIONS

LIGHTING

When broiler is first lit, it will smoke until the preservation oils and impurities are burned off.

BROILING

Turn valves on and pre-heat unit on "HI" before attempting to broil. You will have to experiment with the grill settings and the valve settings for your particular meat products. We recommend that you set the grate at the full tilt position to start with. This position allows the grease to run down the grate into the grease tray, reducing flare ups. Check water pans frequently and add a sufficient amount of water when necessary. Hot water vapors rising from the water pans and through the combustion chamber helps reduce flare ups. Exercise care when using your broiler.

TILTING THE GRATE

Raise or lower the grate to the next step by lifting the grate at the back of the charbroiler where the grate rests. Use potholders or gloves to reposition.



CAUTION

CHARBROILERS ARE HOT! NEVER ATTEMPT TO CHANGE THE GRILL POSITION WHILE MEAT PRODUCTS ARE COOKING. FLARE UPS CAN OCCUR UNEXPECTEDLY. TURN OFF CHARBROILER, AND ALLOW THE CHARBROILER TO COOL.

ADJUSTING HEAT PATTERN

It is possible through this arrangement to have a high heat or searing section, while having a low heat finishing or holding section. For the searing operation, set the valves for the section at a position of "HI" or close to it. For holding or finishing, set the valves closer to the "LOW" position on the dial. You select the heat pattern you like, and set the valves accordingly.

CLEANING

Clean regularly. Remove grate section to sink for washing. Brush out carboned particles. Remove and wash water pan. Wipe exterior surfaces with detergent and a cloth. A non-abrasive cleaner can be used on caked areas.

WATER PAN

The water pan is located at the bottom of the unit, and is easily removed from the front of the unit. Water should be added to the water pan and replaced as necessary. The water pan helps prevent flare ups and catches grease.

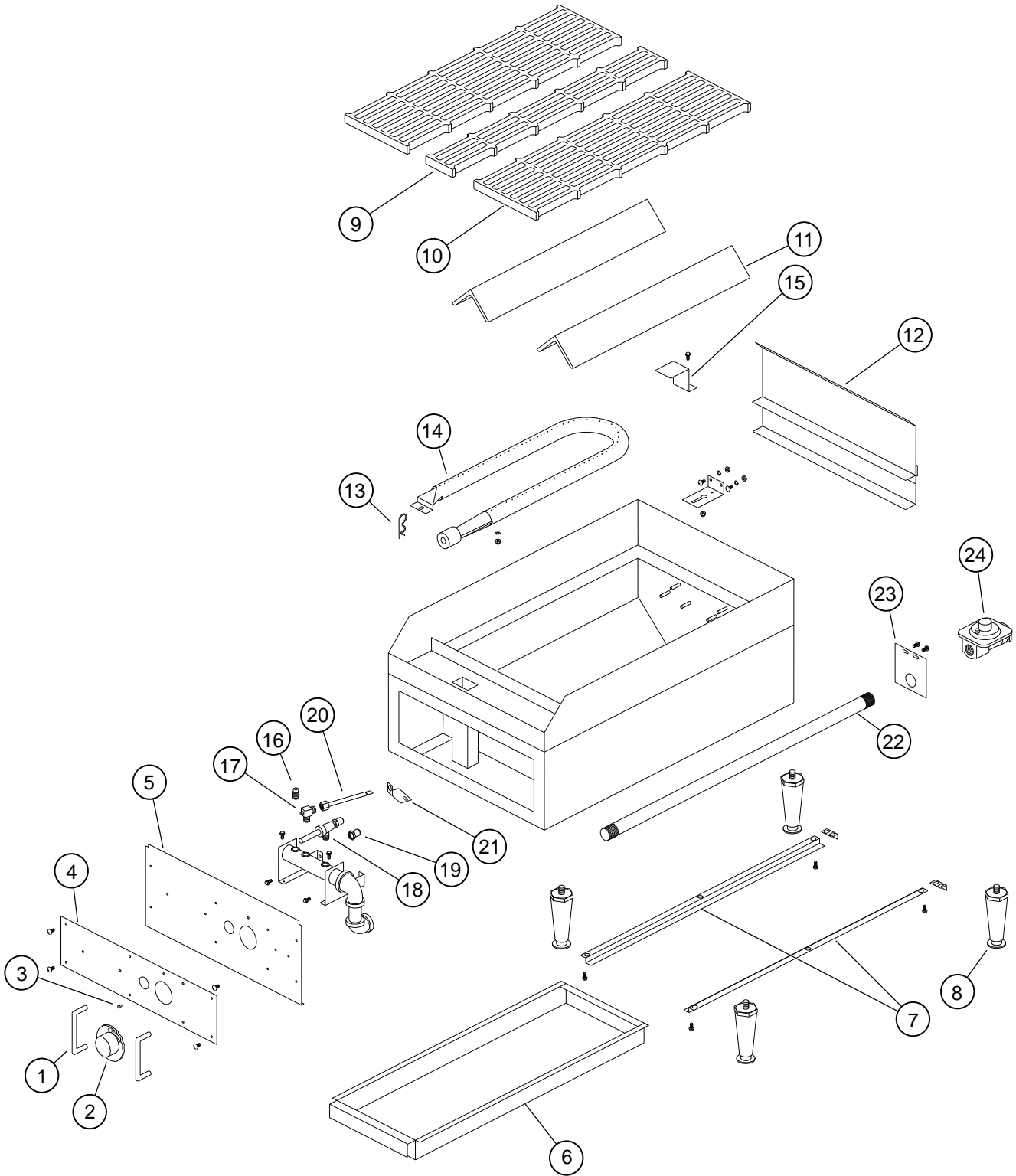
AIR INTAKES IN BOTTOM

Air for combustion enters from the bottom of the unit. Do not obstruct this area.

MAINTENANCE AND REPAIRS

Contact the factory or one of its representatives or a local service company for service or maintenance if required.

RETAIN THIS MANUAL FOR FUTURE REFERENCE
Part No. 2M-Y7198 Rev. F 6/28/00



MODEL 6115RCB, 6124RCB, 6136RCB

STAR MANUFACTURING INTERNATIONAL, INC.

SK1274 10/1/93



2M-Y7198, STAR-MAX GAS CHARBROILER, 6115RCB, 6124RCB, 6136RCB

PARTS LIST

November 26, 2012

Model: 6115RCB, 6124RCB, 6136RCB Star-Max Gas Radiant Charbroiler
15", 24" & 36"

Star-Max Gas Radiant Charbroiler				
Fig No.	Part No	Qty	Description	Application
1	2R-8229	2/4/6	SHIELD KNOB	6115RCB/6124RCB/6136RCB
2	2R-9364	1/2/3	KNOB-CONTROL	6115RCB/6124RCB/6136RCB
3	2R-9193	1/2/3	INDICATOR BUTTON	6115RCB/6124RCB/6136RCB
4	2M-Y9495	1	FACEPLATE	6115RCB
	2M-Y9479		FACEPLATE	6124RCB
	2M-Y9480		FACEPLATE LEFT	6136RCB
	2M-Y9481		FACEPLATE RIGHT	6136RCB
5	G3-Y7152	1	FRONT PANEL	6115RCB
	G3-Y7016		FRONT PANEL	6124RCB
	G3-Y7014		FRONT PANEL	6136RCB
6	H3-T1026	1	GREASE DRAWER	6115RCB
	H3-Y7045			6124RCB
	H3-Y7044			6136RCB
7	G3-Y7047	2	SLIDE DRAWER	
8	2A-Z0314	4	LEG	
9	2F-Y8831	1	GRATE 3"6115RCB	
10	2F-Y8830	2/4/6	GRATE 6"	6115RCB/6124RCB/6136RCB
11	2F-Y7553	2/4/6	RADIANT	6115RCB/6124RCB/6136RCB
12	G3-624038	1	GUARD WELD ASSEMBLY	6115RCB
	G3-624037			6124RCB
	G3-624039			6136RCB
13	2A-Y6694	1/2/3	CLIP	6115RCB/6124RCB/6136RCB
14	2F-Y7052	1/2/3	BURNER ASSEMBLY	6115RCB/6124RCB/6136RCB
15	H3-Y7077	1/2/3	BURNER GUARD	6115RCB/6124RCB/6136RCB
16	2P-1453	1	PLUG-PIPE	
17	2V-6671	1/2/3	VALVE-PILOT	6115RCB/6124RCB/6136RCB
18	2V-Y8832	1/2/3	VALVE-BURNER	6115RCB/6124RCB/6136RCB
19	2J-Y8838	1/2/3	HOOD BURNER NAT. #45	6115RCB/6124RCB/6136RCB
	2J-Y7136		HOOD BURNER LP. #53	6115RCB/6124RCB/6136RCB
20	G3-Y7355	1/2/3	TUBE-PILOT	6115RCB/6124RCB/6136RCB
21	G3-Y7356	1/2/3	PILOT BRACKET	6115RCB/6124RCB/6136RCB
22	2K-Y7123	1	INLET PIPE	
23	G3-Y7252	1	INLET PIPE SUPPORT	
24	2J-Y7589	1	PRESSURE REGULATOR	

2M-Y7198, STAR-MAX GAS CHARBROILER, 6115RCB, 6124RCB, 6136RCB

IMPORTANT: WHEN ORDERING, SPECIFY VOLTAGE OR TYPE GAS DESIRED, INCLUDE MODEL AND SERIAL NUMBER

Some items are included for illustrative purposes only and in certain instances may not be available