

SOME ITEMS ARE INCLUDED FOR ILLUSTRATIVE PURPOSES ONLY AND IN CERTAIN INSTANCES MAY NOT BE AVAILABLE

This drawing contains information confidential to Star Manufacturing International, Inc. No reproduction or disclosure of its contents is permitted.

● = B Style Hinge Units Only

**MODEL GR10I,CG10I, GR14,GR14I, GR14ITTC,CG14,CG14I,CG14IGT**

**STAR INTERNATIONAL HOLDINGS, INC. COMPANY**

SK2455

Rev. F

6/12/2015

2M-Z2906 Two-Sided Grills

# PARTS LIST

October 03, 2014, Rev. O

## MODEL 14' TWO SIDED GRILLS

Fig. No	Part No	Qty	Description	Application
1	2C-Z2992	2	SCREW, HANDLE	
2	2V-Z11395	1	HANDLE, B-STYLE HINGE	CG142TB, CG14B, CG14E, CG14IB, CG14IGTB, CG14ITB, CG14ITGTB240, CG14ITLB, CG14ITSC, CG14TB, GR14B, GR14E, GR14IB, GR14ITB, GR14SNB, GR14TB
	2V-Z2989		HANDLE - 14", COUNTERBALANCE	
	2V-Z3413		HANDLE - 14" S.S.	GR14, GR14T, SER. # GRC00112 - 00138, GRC00778 - 00858, GRC00864 - 01256
3	2B-Z11391	2	ARM 14" SPT	GR14SNB
	2B-Z2987		ARM - 14"	CG14EA, CG14IEA, GR14EA, GR14IEA, GR14C, CG14I, CG14IGT, CG14IT, CG14ITGT, GR14, GR14I, GR14IT
	2B-Z3336		ARM	GR14SN
	2B-Z14019		ARM, STANDARD 45 DEG.	CG14DTB, CG14B, CG14E, CG14IB, CG14IT, GR14B, GR14E, GR14IB, GR14ITB
4	2C-40637	4	NUT 1/4-20 ACORN CAP MS	ALL EXCEPT GR14SNB MODELS
	2C-08-07-0262		WASHER	
5	2C-Z2992	4	SCREW, ARM TO BRACKET	
	2C-1523	4	SCREW, .250-20UNC X .75 LG RHP	B SERIES COUNTERBALANCE
	2C-08-07-0262		LCKWSHR, .250 INTERLOCK TOOTH	
6	D9-Z2036	1	HOUSING-TOP-14"	
	D9-Z14020	1	TOP HOUSING, LEFT, 14"	CG142TB, CG14B, CG14E, CG14IB, CG14IGTB, CG14ITB, CG14ITGTB240, CG14ITLB, CG14ITSC, CG14TB, GR14B, GR14E, GR14IB, GR14ITB, GR14SNB, GR14TB
7	2C-Z3200	2	PIN - TOP HOUSING	
8	2C-Z2855	2	RETAINER RING	
9	2C-08-07-0040	2	1/4" NUT, USE PART NUMBER 2C-Z2820	
10	2A-Z3827	1	PLATE, STAMPING - CONDUIT	
11	2C-Z3780	2	CONDUIT RETAINER	
12	2E-Z2898	1	CONDUIT ASSY. - PTFE	
13	2E-Z3768	1	CONDUIT LOCKNUT	
14	D9-04-GR-0166	1	WIRE MOUNT	
15	D9-Z13099	2	BRACKET, INSULATION	
16	D9-Z2888	2	INSULATION - 14"	
17	2C-Z2893	8	NUT 10-24 HEX STL ZP	
18	D9-Z2075	1	TOP ELEMENT/INS. PLATE/14	
19	2C-08-07-0285	8	SCREW, ELEMENT RET. PLATE	
20	PS-Z1980	1	ELEMNT REPL. KIT, 800W/120V	CG14, CG14T, GR14, GR14IB GR14T, CG14IT-120V
	PS-Z2021		ELEMNT REPL. KIT, 800W/240V	CG14, CG14T, GR14, GR14T
	D9-GR0535		ELEMNT ASSY 800W/240V	CG/GR14E-230V, CG/GR14E-240V
	PS-Z2391		ELEMNT REPL, KIT, 1800W/240	GR14I, GR14IT, CG14IGT, CG14ITGT, CG14I, CG14IT
	D9-GR0514		ELEMENT, TOP	CG14E-120V, GR14E-120V, GR14IE
21	PS-GR0351	1	KIT, 2F-Z1946 CASTING	CG14, CG14T, CG14GTB
	PS-GR0352		KIT, 2F-Z1948 CASTING	GR14I, GR14IT
	PS-GR0353		KIT, 2F-Z1950 CASTING	CG14IGT, CG14ITGT
	PS-GR0350		KIT, 2F-Z7786 CAST-TOP ALM	GR14, GR14T

2M-Z2906 Two-Sided Grills

**IMPORTANT: WHEN ORDERING, SPECIFY VOLTAGE OR TYPE DESIRED  
INCLUDE MODEL AND SERIAL NUMBER**

PAGE 1  
OF 4

Some items are included for illustrative purposes only and in certain instances may not be available.



# PARTS LIST

October 03, 2014, Rev. O

## MODEL 14" TWO SIDED GRILLS

Fig. No	Part No	Qty	Description	Application
22	2K-3485	1	BUSHING-HEYCO #SR-9P-2	GR14I, GR14IT, CG14IGT, CG14ITGT, CG14I, CG14IT (240V MODELS)
	2K-Y2968		BUSHING 7W-2	CG14IT-120V
	2K-Y3240		BUSHING SR 17-2, 90°	
	2K-Y6764		BUSHING - STRAIN RELIEF	(120VC MODELS)
23	2E-Z2905	1	CORD SJTO 12/3 NEMA 6-20P	GR14I, GR14IT, CG14IGT, CG14ITGT, CG14I, CG14IT (240V MODELS)
	2E-Z2935		CORD SET 14/3 NEMA 5-15P	(120V MODELS)
	2E-Z2770		CORD, POWER, 14-3, 6-15P 240V, 72" LONG	CG14, CG14T, GR14, GR14E, GR14T, GR14ITB, GR14IB, (240V MODELS)
	2E-Y9251		CORD SET CONT EUR 16 AMP	230V MODELS
	2E-Z9192		CORDSET (DETACHABLE) UK	GR14B-UK
	2E-Z16940		CORDSET, 14/3, SJTO, 90°, 5-15	GR14TQ, GR14TBCH-120
24	2M-Z2620	1	LABEL CAUTION, BI-LINGUAL	
25	2E-05-07-0350	1	TRANSFORMER 230V/10V 6VA	230 & 240V MODELS
	2E-05-07-0351		TRANSFORMER 115/10V 6VA	120V MODELS
26	2E-Z2894	1	TERMINAL BLOCK	
27	D9-GR0054	1	REAR LINER ASSY. - 14"/BOT	CG14, GR14, CG14T, GR14T
	D9-GR0080		REAR LINER ASSY. - 14"/REAR	CG14I, GR14I, CG14IGT, CG14IT, GR14IT, CG14ITGT
	D9-GR0201		REAR LINER ASSY.	CG14IT (120V)
28	2C-1512	2	SCREW - PIN ASSY	
29	2V-Z3252	1	PIN ASSY - TOP HOUSING STOP	
30	2R-Z2896	1	COUNTERBALANCE -14"-IRON	
	2R-Z2897		COUNTERBALANCE -14"-ALUM.	
30a	PS-GR0537	1	KIT, HINGE & SPRING, 14" ALUMINUM	14" ALUMINUM, CG14B, GR14B SERIES
	PS-GR0538		KIT, HINGE & SPRING, 14" IRON	14" IRON, CG14B, GR14B SERIES
31	D9-GR0032	2	TORQUE BOX ASSY.	
32	D9-Z3071	4	BRACKET-HANDLE	
33	2V-Z3072	2	HANDLE - SIDE	
34	D9-GR0034	1	GREASE CABINET ASSY.	CG14-230V, CG14I-230V, CG14IT-230V, CG14ITGT-230, CG14T-230V, GR14-230V, GR14I-230V, GR14IT-230V, GR14T-230V
35	D9-GR0517	1	GREASE DRAWER ASSY	
37	D9-Z10086	1	PLATE, BOTTOM	GR14-2T-120C
	D9-GR0519		BASE ASSY/GREASE CAB. 14"	120V & 240V MODELS
	D9-GR0523		BASE BTM/GRS CAB ASM-230V	230V MODELS
38	2A-Z1485	4	FOOT, 1" ADJUSTABLE, 1/4" STUD	CERTAIN APPLICATIONS
	2A-Z11501		FOOT, 1" SOLID RUBBER, 1/4" STUD	ALLUMINUM PLATES
	2A-Z0314-1		BASE, FOOT 4" CAST W/RUBBER FOOT	CG14IB, CG14IGTB, CG14ITB, CG14ITLB, CG14ITSC, GR14IB, GR14ITB
38a	2A-Z12980		2.5" FOOT BASE, 3/8" STUD	GR14I, GR14IT, CG14I, CG14IT, CG14IGT, CG14ITGT
38b	2A-Z12946		BASE, FOOT, NON-SKID	CG14I, CG14IB, CG14IE, CG14IEGT, CG14IGTB, GR14I GR14IB, GR14IE, GR14ITB, (mfg after 4-2010)
39	D9-GR0061	1	BODY ASSY. - 14"	
	D9-GR0184		BODY ASSY	GR14SN
40	2J-Z1836	1	TIMER CONTROL	CG14T, CG14IT, CG14IGT, GR14T, GR14IT

2M-Z2906 Two-Sided Grills

**IMPORTANT: WHEN ORDERING, SPECIFY VOLTAGE OR TYPE DESIRED  
INCLUDE MODEL AND SERIAL NUMBER**

PAGE 2  
OF 5

Some items are included for illustrative purposes only and in certain instances may not be available.



**Star International Holding, Inc. Company**

# PARTS LIST

October 03, 2014, Rev. O

## MODEL 14' TWO SIDED GRILLS

Fig. No	Part No	Qty	Description	Application
41	2K-Z1971	4	SPACER	CG14T, CG14IT, CG14IGT, CG14E, GR14T, GR14IT, GR14E,
42	2J-Y6689	1	PILOT LIGHT, 120V	CG14, GR14 (120V MODELS)
	2J-Y6690		PILOT LIGHT, 240V	GR14I, CG14IGT, CG14I, CG14, GR14 (240V)
44	PS-GR0224	1	RKER SWITCH RPL 14" KIT	CG14T-120V W/SERIAL NO BELOW CGC25308
				CG14IT-120V W/SERIAL NO BELOW CGC24701
				GR14T-120V W/SERIAL NO BELOW GRC23789
				CG14IT-240V W/SERIAL NO BELOW CGC24559
	2E-Z6863		SWITCH 3 POS, DPDT	CG14T, CG14IT, CG14IGT, GR14T, GR14IT
	2E-Z3808		SWITCH - 30A@120V	CG14E-120V, GR14E-120V
45	2M-Z3050	1	OVERLAY - 14" NO TIMER	GR14I, CG14IGT, CG14I, CG14, CG14B, GR14, GR14B, CG14GTB
	2M-Z3816		OVERLAY - 14" w/2 MANUAL TIMERS	CG14-2T
	2M-Z6870		OVERLAY - 14" w/TIMER	GR14IT, CG14ITGT, CG14IT, CG14T, GR14T, GR14TB
	2M-Z12002		OVERLAY	CG14E, GR14E
	2M-Z18461		LABEL ON & OFF	CG14E, GR14E
46	2I-05-07-0013	1	RUBBER BOOT, SWITCH	
47	2R-Z4621	1	KNOB-CONTROL	
48	2T-6447	1	THERMOSTAT 118V-236V	
49	2A-Z3026	1	HALF CLIP	
50	D9-Z12885	2	INSULATION HOLD DOWN,	
51	D9-Z13338	1	BTM ELEMENT RET. PLATE 14"	
52	2N-Z1981	1	BTM ELEMENT, HEATING, 1000W/120	CG14, CG14T, GR14, GR14IB, GR14T, CG14IT-120V
	2N-Z2022		BTM ELEMENT, HEATING, 1000W/240	CG14, CG14T, GR14, GR14T
	D9-GR0534		BTM ELEMENT ASSY, 1000W/240	GR14E-240V
	2N-Z2392		BTM ELEMENT, HTG, 1800W/240V	GR14I, GR14IT, CG14IGT, CG14ITGT, CG14I, CG14IT
	D9-GR0513		BTM ELEMENT ASSY	CG14E-120V, GR14E-120V, GR14IE
53	2F-Z1945	1	CASTING, SM. BOT., ALUM.-14"	GR14, GR14T, CG14GTB
	2F-Z1947		CASTING, GR. BOT., ALUM.-14"	CG14, CG14T
	2F-Z1949		CASTING, SM. BOT., IRON-14"	GR14I, GR14IT, CG14IGT, CG14ITGT
	2F-Z1951		CASTING, GR. BOT., IRON-14"	CG14I, CG14IT
54	2C-Z5883	8	SCREW 10-24X1/2 FZA	
55	PS-GR134	2	ROLLER BEARING KIT	
56	D9-Z11283	1	COUNTER BALANCE STOP BASE	ACCESSORIES
57	D9-Z11284	1	COUNTER BALANCE STOP BRACKET	ACCESSORIES

2M-Z2906 Two-Sided Grills

**IMPORTANT: WHEN ORDERING, SPECIFY VOLTAGE OR TYPE DESIRED  
INCLUDE MODEL AND SERIAL NUMBER**

PAGE 3  
OF 5

Some items are included for illustrative purposes only and in certain instances may not be available.



**Star International Holding, Inc. Company**

# PARTS LIST

October 03, 2014, Rev. O

## MODEL 14' TWO SIDED GRILLS

Fig. No	Part No	Qty	Description	Application
60	D9-GR0519	1	BASE ASSY / GREASE CABINET	CG14-120V, CG14-240V, CG14-2T-120V, CG142TB-120, CG14B-120V, CG14B-240V, CG14E-120V, CG14FT-120V, CG14I-120V, CG14I-120VC, CG14I-240V, CG14IB-120C, CG14IB-240V, CG14IGT-240V, CG14IGTB-240, CG14IT-120V, CG14IT-120VC, CG14IT-240V, CG14ITB-120C, CG14ITB-120V, CG14ITB-240V, CG14ITGT-240, CG14ITGTB240, CG14ITL-120V, CG14ITLB-120, CG14ITSB-240, CG14ITSC-240, CG14T-120V, CG14T-240V, CG14TB-120V, CG14TB-240V, GR14-120V, GR14-240V, GR14-2T-120V, GR14B-120V, GR14B-240V, GR14C-240V, GR14E-120V, GR14I-120V, GR14I-240V, GR14IB-120V, GR14IB-240V, GR14IT-120V, GR14IT-240V, GR14ITB-120V, GR14ITB-240V, GR14T-120V, GR14T-240V, GR14TB-120V, GR14TB-240V, GR14TS-120V
	D9-GR0520			GR14ITC-240, GR14SN-120C, GR14SN-120V, GR14SN-240C, GR14SNB-120C, GR14SNB-120V, GR14SNB-240C
	D9-GR0522			CG14-120VC, CG14-2T-120C, CG14B-120VC, CG14FT-120VC, CG14T-120VC, CG14TB-120VC, GR14-120VC, GR14B-120VC, GR14T-120VC, GR14TB-120VC
61	2C-1516	2	#10-24 UNC X 1.00 LG RHP SCREW	14" B-STYLE UNITS
62	2C-6260	2	#10 INTERNAL TOOTH LOCK WASHER	14" B-STYLE UNITS
63	2A-Z15959	2	SPACER BLOCK	14" B-STYLE UNITS
64	2F-Z11945	1	BRACKET LT, ROLLER MOUNT	14" B-STYLE UNITS
	2F-Z11946		BRACKET RT, ROLLER MOUNT	14" B-STYLE UNITS
65	2C-Z13975	4	CAM FOLLOWER ASSY, B VERSION HNG	14" B-STYLE UNITS
66	2C-1512	4	SCREW 10-24X3/8 RHP STL NP	B STYLE HINGE UNITS
67	2C-6260	4	WASHER #10 INT STL NP	B STYLE HINGE UNITS
68	2V-Z11388	2	LINK ASSY BASE, TOP HOUSING	B STYLE HINGE UNITS
69	2A-Z11676	2	CHAIN LINK, 50SS	B STYLE HINGE UNITS
70	2E-Z3768	1	LOCKNUT, CONDUIT, 1/2 IN.	B STYLE HINGE UNITS
71	D9-Z11751	1	PLATE, TOP CONDUIT KEEPER	B STYLE HINGE UNITS
72	2C-Y3999	2	RIVET 3/16X.44 POP AL SM	B STYLE HINGE UNITS
73	2E-Z11699	1	CONDUIT, 1.2' 90 DEG	B STYLE HINGE UNITS
NI	2C-08-WB-0008	2	NUT-TIMER (NOT SHOWN)	CG14-2T
NI	2C-09-WB-0005	2	BEZEL (NOT SHOWN)	CG14-2T
NI	2E-Z3278	1	RTD PROBE - 48" LONG WIRE	CG14E-120V, GR14E-120V
NI	2E-Z3335	2	RELAY DBL POLE-SNGL THROW	CG14E-120V, GR14E-120V
NI	2J-Z11593	1	CONTROL BOARD, SINGLE SG	CG14E, GR14E
NI	2K-08-07-0004	4	SPACER ROUND NYLON	CG14E, GR14E
NI	2P-09-WB-0007	2	TIMER BELL (NOT SHOWN)	CG14-2T
NI	2P-Z2911	1	PLUG DOUBLE D .75x.625	CG14I, GR14I, CG14IGT, CG14IT, GR14IT, CG14ITGT
NI	2R-09-WB-0006	2	KNOB-BLACK (NOT SHOWN)	CG14-2T
NI	2V-Z3027	2	CROSS SUPPORT (NOT SHOWN)	GR14I, GR14IT, CG14I, CG14IT, CG14IGT, CG14ITGT
NI	D9-GR0108	1	FACEPLATE ASSY. - 14" NO TIMER	GR14I, CG14IGT, CG14I, CG14, GR14
NI	D9-GR0178	1	FACEPLATE ASSY. - 14" 2 TIMERS	CG14-2T
NI	D9-GR0185	1	FACEPLATE ASSY, - 14"	GR14SN
NI	D9-GR0210	1	FACEPLATE ASSY. - 14" w/TIMER	GR14IT, CG14ITGT, CG14IT, CG14T, GR14T
NI	D9-Z12027	1	PROBE BRACKET - BOTTOM	CG14E, GR14E

2M-Z2906 Two-Sided Grills

**IMPORTANT: WHEN ORDERING, SPECIFY VOLTAGE OR TYPE DESIRED  
INCLUDE MODEL AND SERIAL NUMBER**

PAGE 4  
OF 5

Some items are included for illustrative purposes only and in certain instances may not be available.



**Star International Holding, Inc. Company**

# PARTS LIST

October 03, 2014, Rev. O

MODEL **14' TWO SIDED GRILLS**

Fig. No	Part No	Qty	Description	Application
NI	<a href="#">D9-Z3028</a>	1	SIDE SUPPORT (NOT SHOWN)	GR14I, GR14IT, CG14I, CG14IT, CG14IGT, CG14ITGT
NI	<a href="#">D9-Z3029</a>	1	PART SUPPORT (NOT SHOWN)	GR14I, GR14IT, CG14I, CG14IT, CG14IGT, CG14ITGT
NI	<a href="#">Z1-70-07-0343</a>	1	SWITCH GUARD	CG14E, GR14E

2M-Z2906 Two-Sided Grills

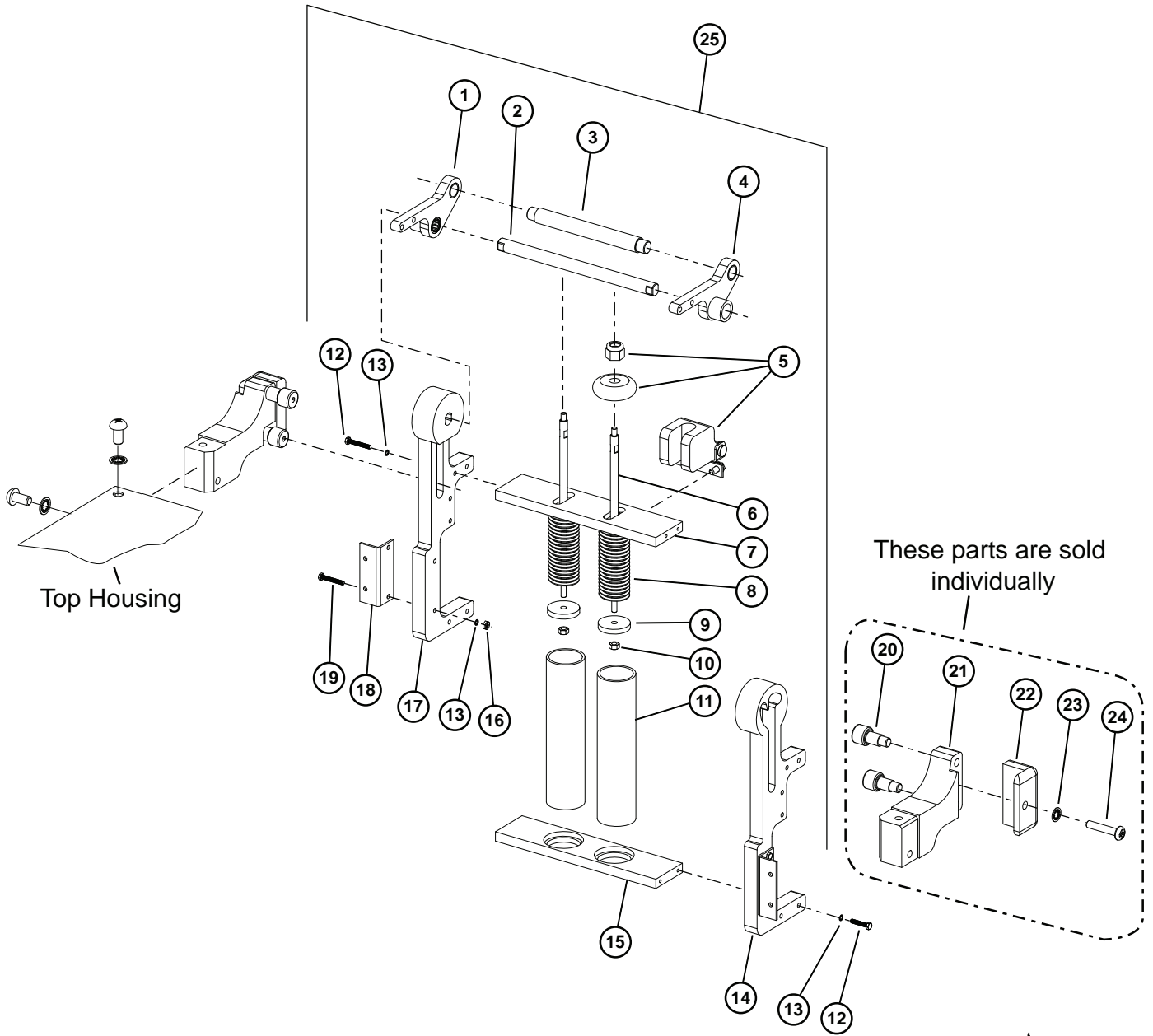
**IMPORTANT: WHEN ORDERING, SPECIFY VOLTAGE OR TYPE DESIRED  
INCLUDE MODEL AND SERIAL NUMBER**

PAGE 5  
OF 5

Some items are included for illustrative purposes only and in certain instances may not be available.



**Star International Holding, Inc. Company**



**MODEL: SG HINGE MECHANISM**

PS-GR0536, PS-GR0537, PS-GR0538



**STAR MANUFACTURING INTERNATIONAL, INC.**

SK2507

Rev. -

4/15/11

Detail A

# Parts List

April 25, 2011, Rev. E

HINGE MECHANISM TWO SIDED GRILLS				
Fig No	Part No	Description	Qty	Application
1	2A-Z12471	ARM GUIDE ASSEMBLY LT	1	ALL SINGLE
	2V-Z12452	ARM GUIDE ASSY., ST		SPLIT TOP
2	2A-Z11398	HINGE MECHANISM ROD	1	ALL SINGLE
	2A-Z11405	HINGE MECHANISM ROD, SPT		SPLIT TOP
3	2A-Z11404	SPRING GUIDE MOUNTING ROD	1	SPLIT TOP
	2A-Z11876			ALL SINGLE
4	2A-Z12472	ARM GUIDE ASSEMBLY RT	1	ALL SINGLE
5	D9-GR0515	BASIC ASSY, STOP	1	ALL
6	2V-Z12612	ROD, SPRING GUIDE	1	SPLIT TOP
			2	ALL SINGLE
7	2A-Z11400	SPRING SUPPORT, TOP	1	ALL SINGLE
	2A-Z11406	SPRING SUPPORT, TOP, SPT		SPLIT TOP
8	2P-Z11408	SPRING, 14" AL	2	SMOOTH & GROOVED ALUMINUM
	2P-Z11408	SPRING, 14" AL	1	SMOOTH IRON
	2P-Z11409	SPRING, COMPRESSION, SPT	1	
	2P-Z11409	SPRING, COMPRESSION, SPT	1	SPLIT ALUMINUM
	2P-Z13941	SPRING COMPRESSION, 14" GR IRON	2	GROOVED IRON
9	2A-Z11397	SPRING PISTON STOP	1	SPLIT TOP
			2	ALL SINGLE
10	2C-Z2670	NUT 1/4-20 W/LOCKWASHER	1	SPLIT TOP
		NUT 1/4-20 W/LOCKWASHER	2	ALL SINGLE
11	2V-Z11399	SPRING TUBE	1	SPLIT TOP
			2	ALL SINGLE
12	2C-9704	SCREW 10-24X1 STL HEX NP	8	SPLIT TOP
13	2C-20204-07	WASHER S/S #10 LOCK INT	12	ALL
14	2F-Z11383	LEFT SUPPORT	1	ALL
15	2A-Z11401	SPRING SUPPORT, BOTTOM	1	ALL SINGLE
	2A-Z11407			SPLIT TOP
16	2C-200230	NUT 10-24 HEX SS	4	ALL
17	2F-Z11384	RIGHT SUPPORT	1	ALL
18	D9-Z11387	SUPPORT MOUNTING BRACKET	2	ALL SINGLE
	D9-Z11883			SPLIT TOP
19	2C-Z11821	SCREW 10-24X1-1/4 HHD	4	ALL
20	2C-Z13975	CAM FOLLOWER ASSY, B VERS HNG	4	ALL
21	2F-Z11943	BRACKET LT, ROLLER MOUNT	1	ALL SPLIT TOP
	2F-Z11944	BRACKET RT, ROLLER MOUNT		
	2F-Z11945	BRACKET LT, ROLLER MOUNT		NON SPLIT TOP
	2F-Z11946	BRACKET RT, ROLLER MOUNT		
22	2A-Z12620	SPACER BLOCK	2	ALL
23	2C-6260	#10 INTERNAL TOOTH LOCK WASHER	2	ALL
24	2C-1516	#10-24 UNC X 1.00 LG RHP SCREW	2	ALL
NI	61-Q2686	LOCTIT THREADLOCKER 242	AR	
<b>ITEM 25 DOES NOT INCLUDE ITEMS 20 THRU 24</b>				
25	PS-GR0536	KIT, HINGE SPING 14 SPLT	2	SPLIT TOP
	PS-GR0537	KIT, HINGE SPRING, 14" ALUMINUM	1	SMOOTH & GROOVED ALUMINUM
	PS-GR0538	KIT, HINGE SPRING, 14" IRON	1	SMOOTH IRON