

STAR MANUFACTURING INTERNATIONAL INC.
9325 Olive Blvd., P.O. Box 8492
St. Louis, MO 63132

MODEL 19 PCMC & 19 PCMCB POPCORN CART

ASSEMBLY INSTRUCTIONS
Reference Drawing Y4938

NOTE: Before assembling, check the parts list to see if any parts are missing. Use drawing Y4938 as a reference.

A. FRONT LEG ASSEMBLY

1. Assemble the two Front Legs (11) to the Body Assembly (1) with two 1/4-20 x 3/4 RH Machine Screws (3), two 1/4 Split Lockwashers (4), and two 1/4-20 Hex Head Nuts (5).
2. Assemble the Front Leg Brace (12) through both of the Front Legs (11) to the bottom of the two Side Leg Braces (13) with two 1/4-20 x 3/4 RH Machine Screws (3), two 1/4 Split Lockwashers (4), and two 1/4-20 Hex Head Nuts.
3. Attach the top of the two Side Leg Braces (13) to the Body Assembly (1) with 1/4-20 x 3/4 RH Machine Screws (3), two 1/4 Split Lockwashers (4), and two 1/4-20 Hex Head Nuts.

B. WHEEL ASSEMBLY

1. Assemble the two Axle Supports (2) to the Body Assembly (1) with two 1/4-20 x 3/4 RH Machine Screws (3), four 1/4 Split Lockwashers (4), and four 1/4-20 Hex Head Nuts.
2. Slide the Wheel Axle (6) through the Axle Supports (2) and, after centering fasten in place with two Axle Cotter Pins (7).
3. Add the Wheels (9) to each side and fasten in place with the Nylon Insert Locknuts (10). Make sure the Locknuts are fastened tightly.

C. CART HANDLE ASSEMBLY

1. Press the two T-Nuts (15) into each end of the Handle Rod (14).
2. Assemble the RH & LH Handle Brackets (16 & (17) to the Handle Rod (14) with two 1/4-20 x 3/4 RH Machine Screws (3).
3. Mount the completed Handle Assembly to the Body Assembly (1) with four 1/4-20 x 3/4 RH Machine Screws (3), four 1/4 Split Lockwashers (4), and four 1/4-20 Hex Head Nuts (5).

D. SHELF DIVIDERS ASSEMBLY

1. Assemble the two Shelf Dividers (18) to the Body Assembly (1) with four No. 10-24 x 3/8 RH Machine Screws (19), four No.10 External Tooth Lockwashers (20), and four No. 10-24 Hex Head Nuts (21). A selection of mounting positions are available to give the user options of storing bags, boxes, oil, salt, etc.

E. TOP ASSEMBLY

1. Mount the Top Assembly (22) to the Body Assembly (1) with four No. 10-24 x 3/8 RH Machine Screws (19), four No. 10 External Tooth Lockwashers (20), and four No. 10-24 Hex Head Nuts (21).

F. DRAWER ASSEMBLIES

1. Assemble the Cash Drawer Knob (24) to the Cash Drawer (23) with a No. 8 -32 x 3/8 RH Machine Screw (32) and a No. 10 External Tooth Lockwasher (20).
2. Slide the completed Cash Drawer Assembly into the space provided on the top shelf of the Body Assembly.
3. Assemble the Corn Bin Handle (26) to the Corn Bin Assembly (25) with two No. 10-24 x 3/8 RH Machine Screws (19) and two No. 10 External Tooth Lockwashers (20).
4. Mount the completed Corn Bin Assembly into the two holes provided on the bottom shelf of the Body Assembly.

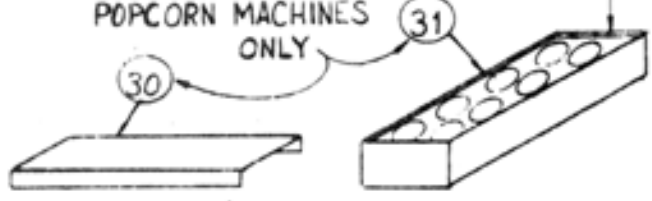
G. PCMC-49 & PCMC-49D ASSEMBLY

1. For 49 Series Popcorn Machines, these adaptor kits must be used.
2. The 49 Cart Filler (30) and the 49 Popcorn Storage Rack (31) sit directly on the Top Assembly (22).
3. Your 49 Series or 49D Series Popcorn Machine should be placed in the remaining space on the Top Assembly. The cord should be routed through the hole provided in the Top Assembly and the hole provided on the bottom shelf.
4. If leveling of the popcorn machine is necessary, two tabs on the 49 Cart Filler (30) may be bent upwards as necessary to make the machine level.
5. Place the Wire Rack Divider (28) on top of the 49 Popcorn Storage Rack (31). The storage assembly is designed to give the user a wide variety of methods to store bags, boxes, or cones full of fresh popped corn.

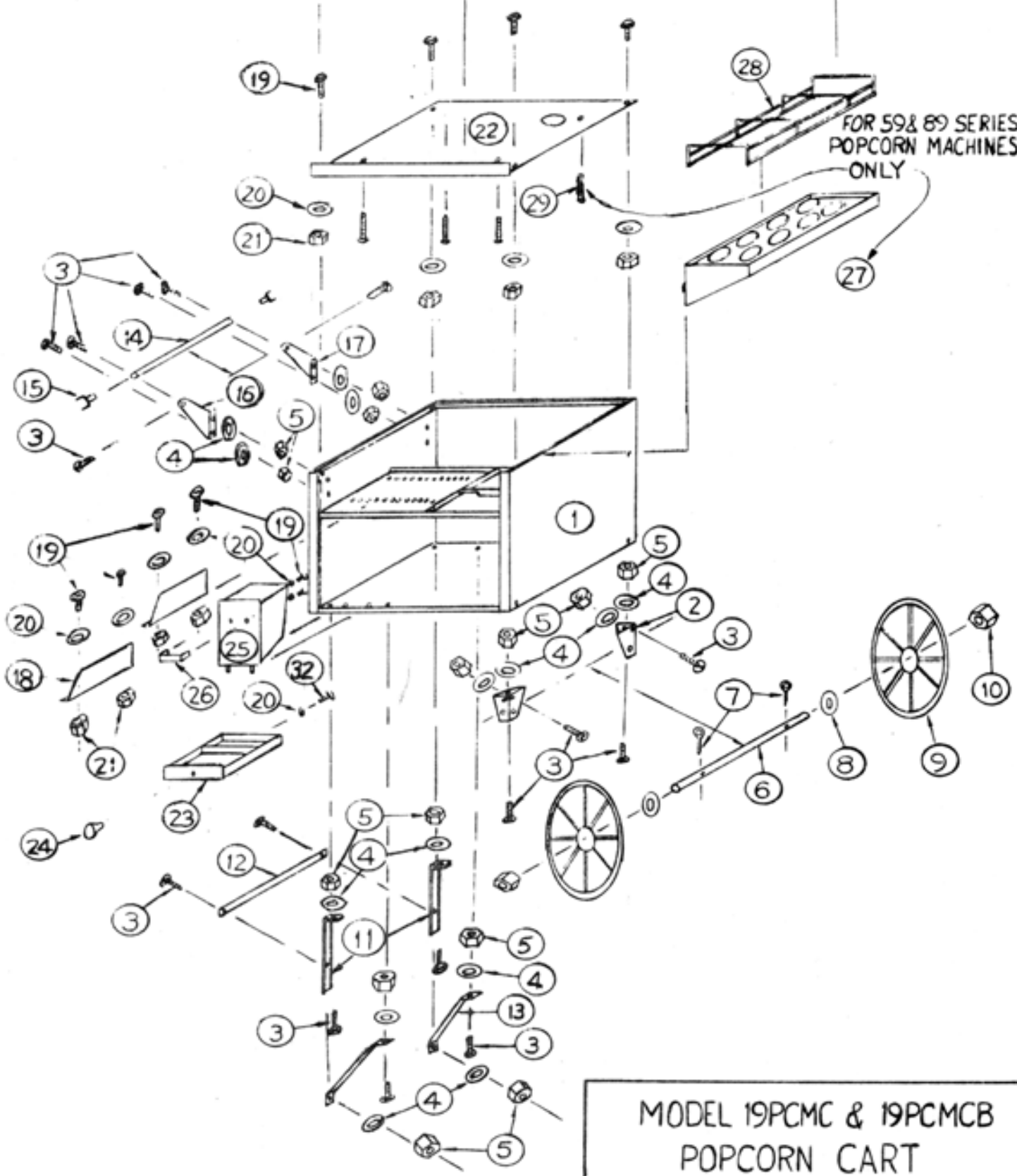
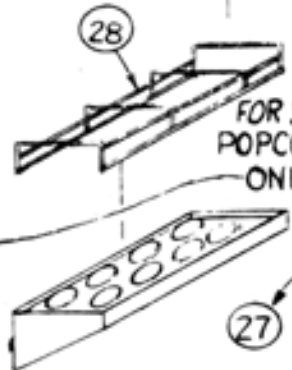
H. PCMC - 89 ASSEMBLY

1. For 59 Series and 89 Series Popcorn Machines, this adaptor kit must be used.
2. The 89 Popcorn Storage Rack (27) hooks into the top ledge of the Body Assembly (1).
3. Your 59 Series or 89 Series Popcorn Machine is mounted to the cart by four 1/4-20 x 1 1/4 RH Machine Screws (29) through the Top Assembly (22).
4. Place the Wire Rack Divider (28) on top of the 89 Popcorn Storage Rack (27). The storage assembly is designed to give the user a wide variety of methods to store bags, boxes, or cones full of fresh popped corn.

FOR 49 SERIES
POPCORN MACHINES
ONLY



FOR 59 & 89 SERIES
POPCORN MACHINES
ONLY



MODEL 19PCMC & 19PCM CB
POPCORN CART
ASSEMBLY PROCEDURE
REFERENCE DRAWING Y4938